



IBM @server

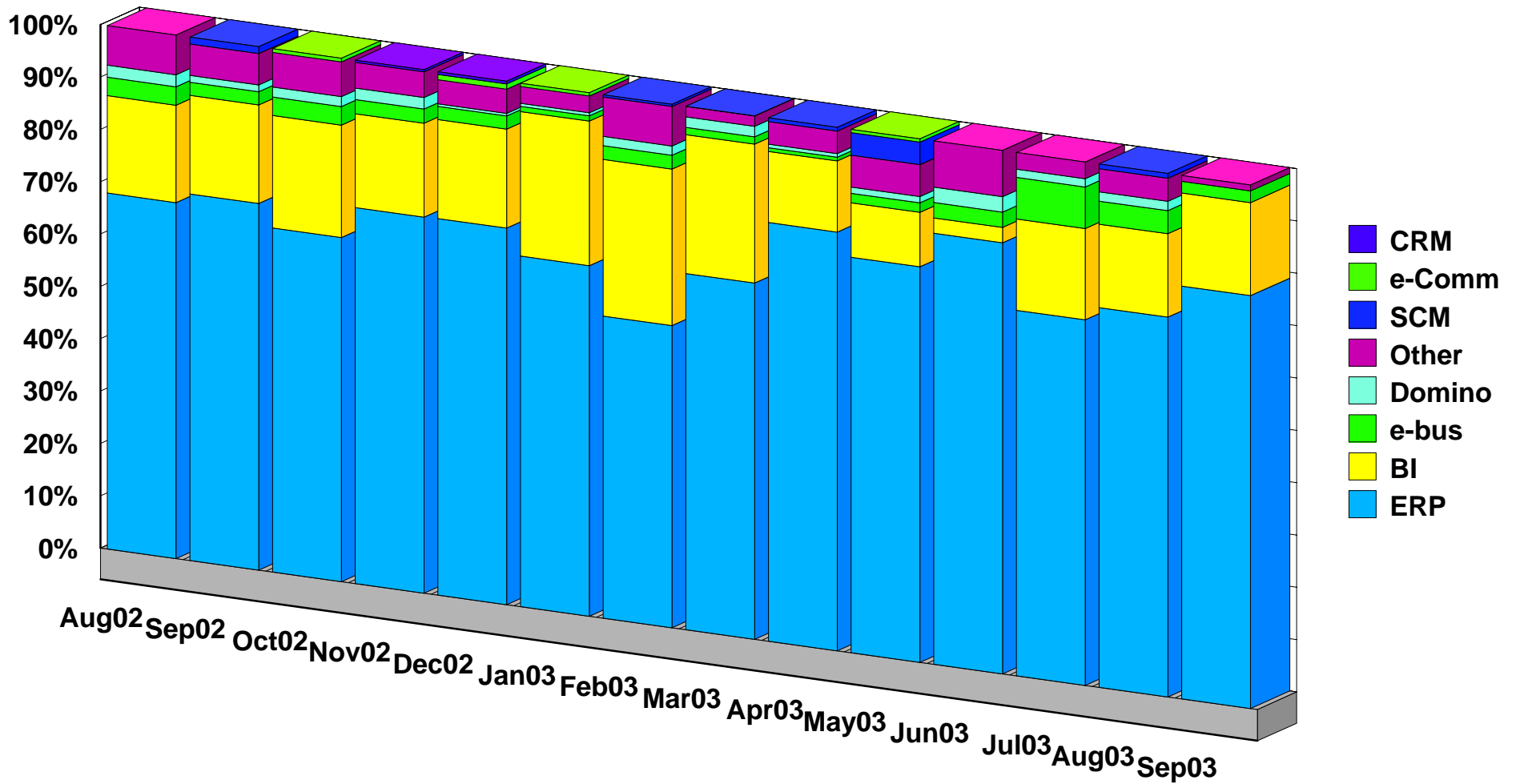
iSeries Developer Roadmap

Initial Words of Wisdom



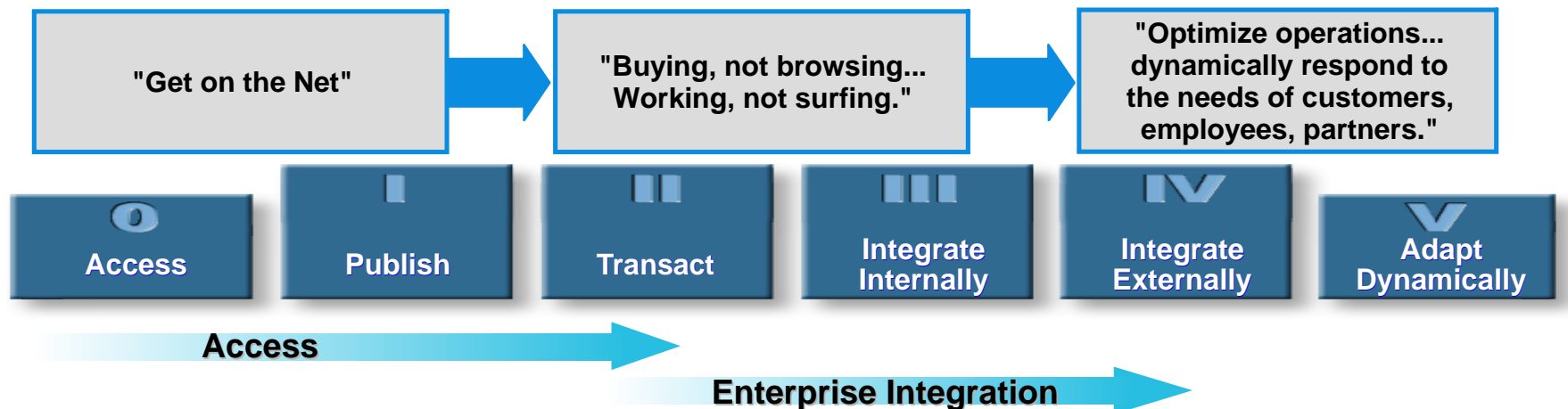
- ✓ ***This is not about "give me Java or give me death"***
- ✓ ***These charts focus on IBM tools but there are many partner solutions as well***
- ✓ ***The worst thing an iSeries shop can do is to do nothing***

iSeries Applications Today

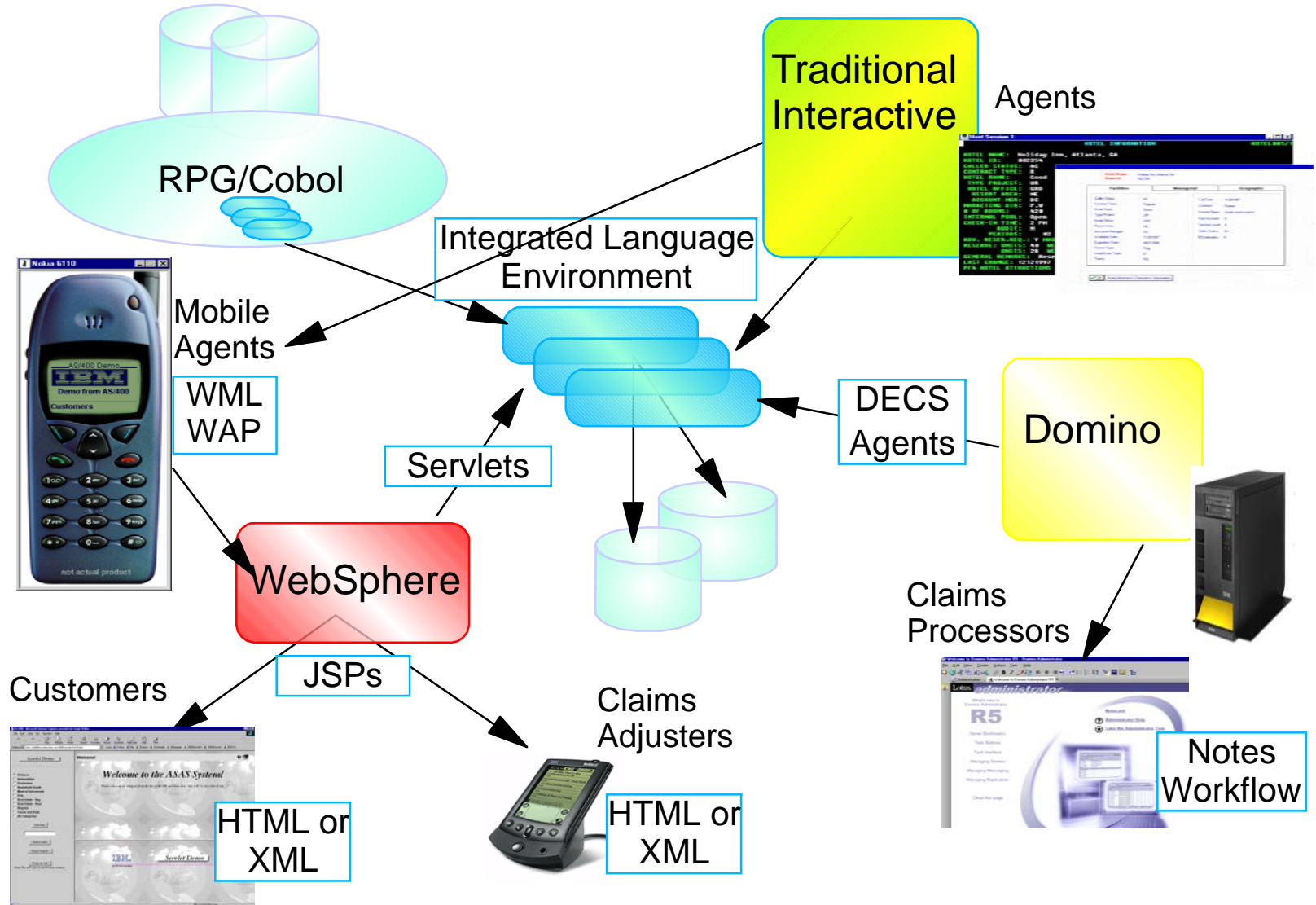


Phases of e-business Adoption

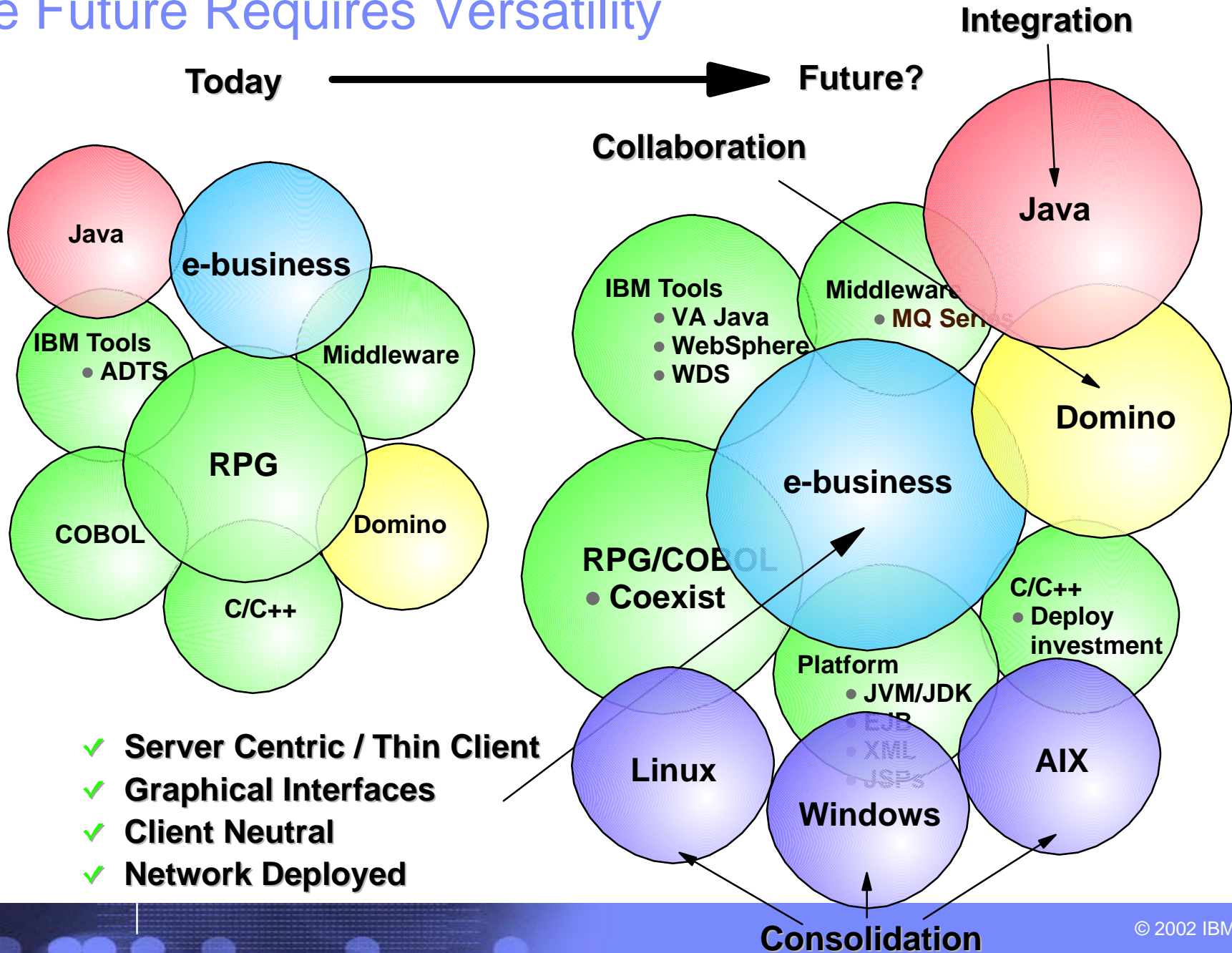
iSeries customers are demanding that we provide the tools and infrastructure to create the applications of the future...



iSeries Applications Tomorrow

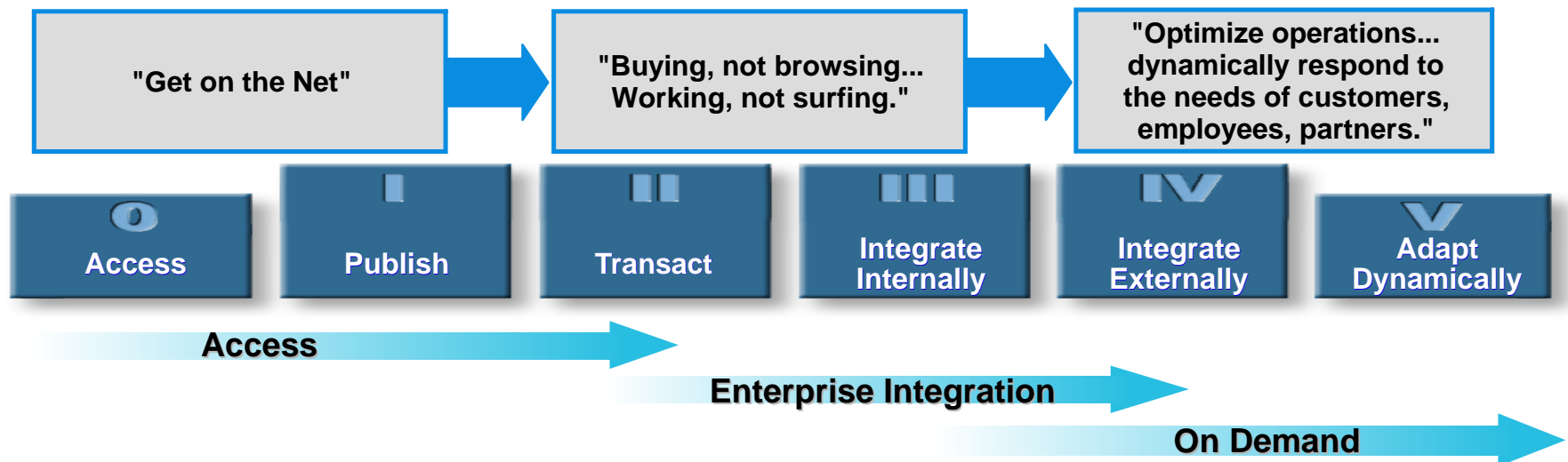


The Future Requires Versatility

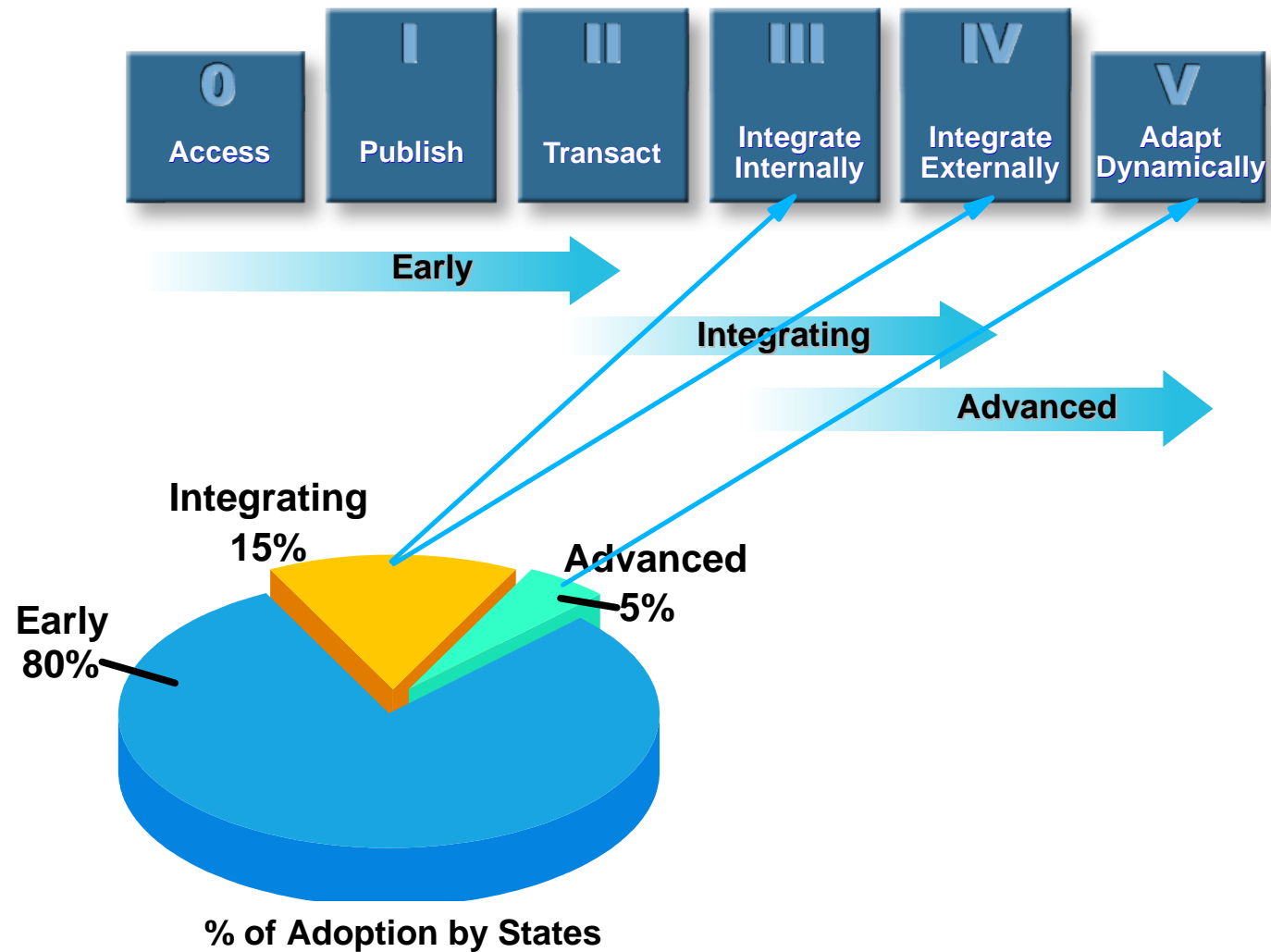


The Future Requires New Technologies & Skills

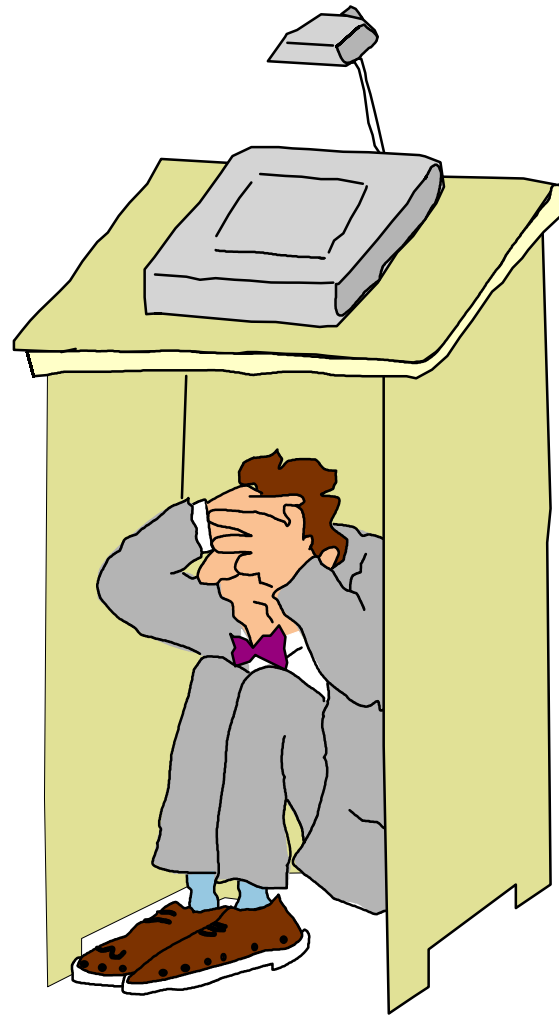
| | | | | |
|-----|---------------------------------|--|--|--|
| RPG | WebFacing HTML JavaScript | J2SE - Java - Servlets - JavaServer Pages | WebServices - SOAP - WSDL - UDDI - XML | J2EE - Enterprise JavaBeans - Java Messaging Services - Java Connector Architecture |
|-----|---------------------------------|--|--|--|



iSeries Customers are Lagging Behind

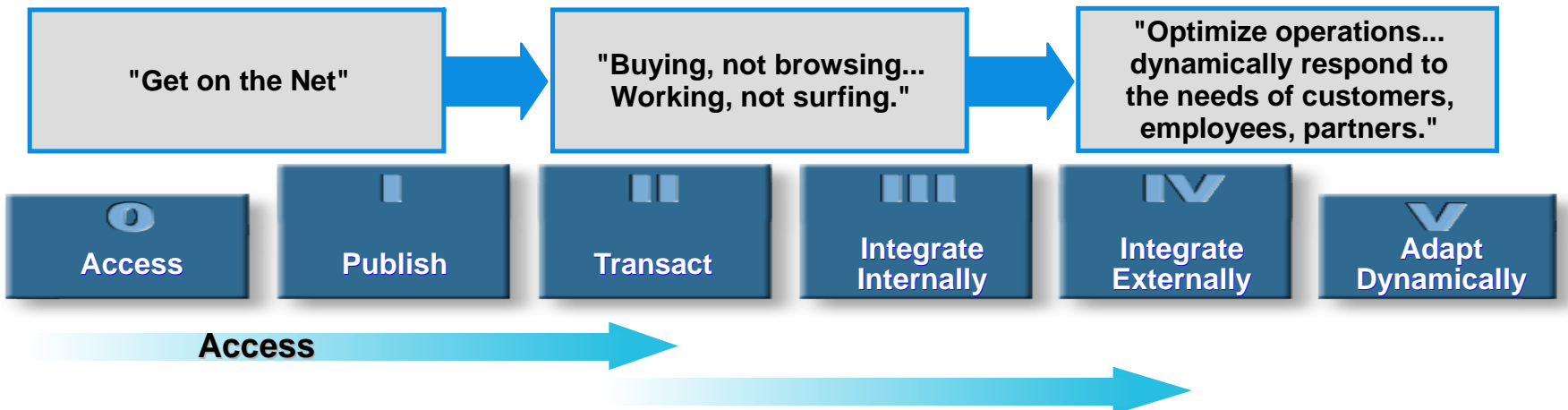
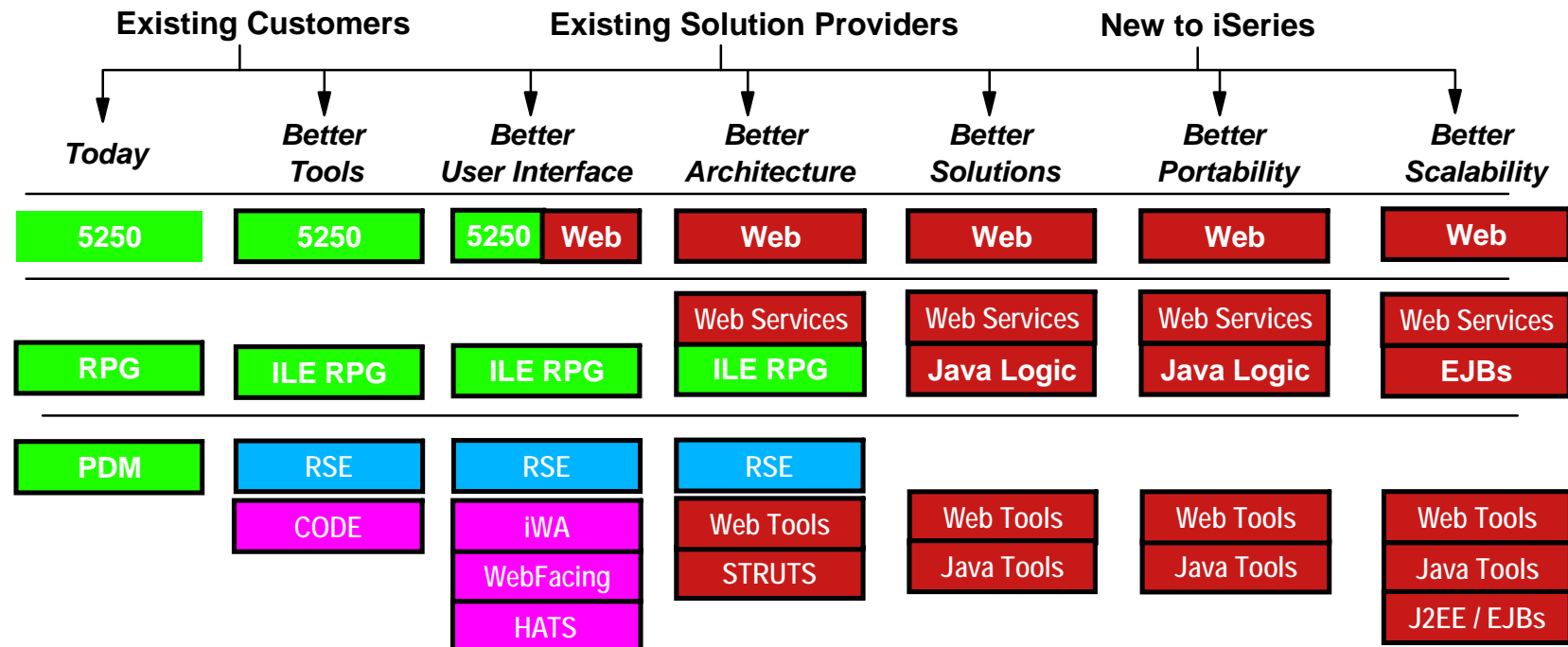


How Do I Do That ???



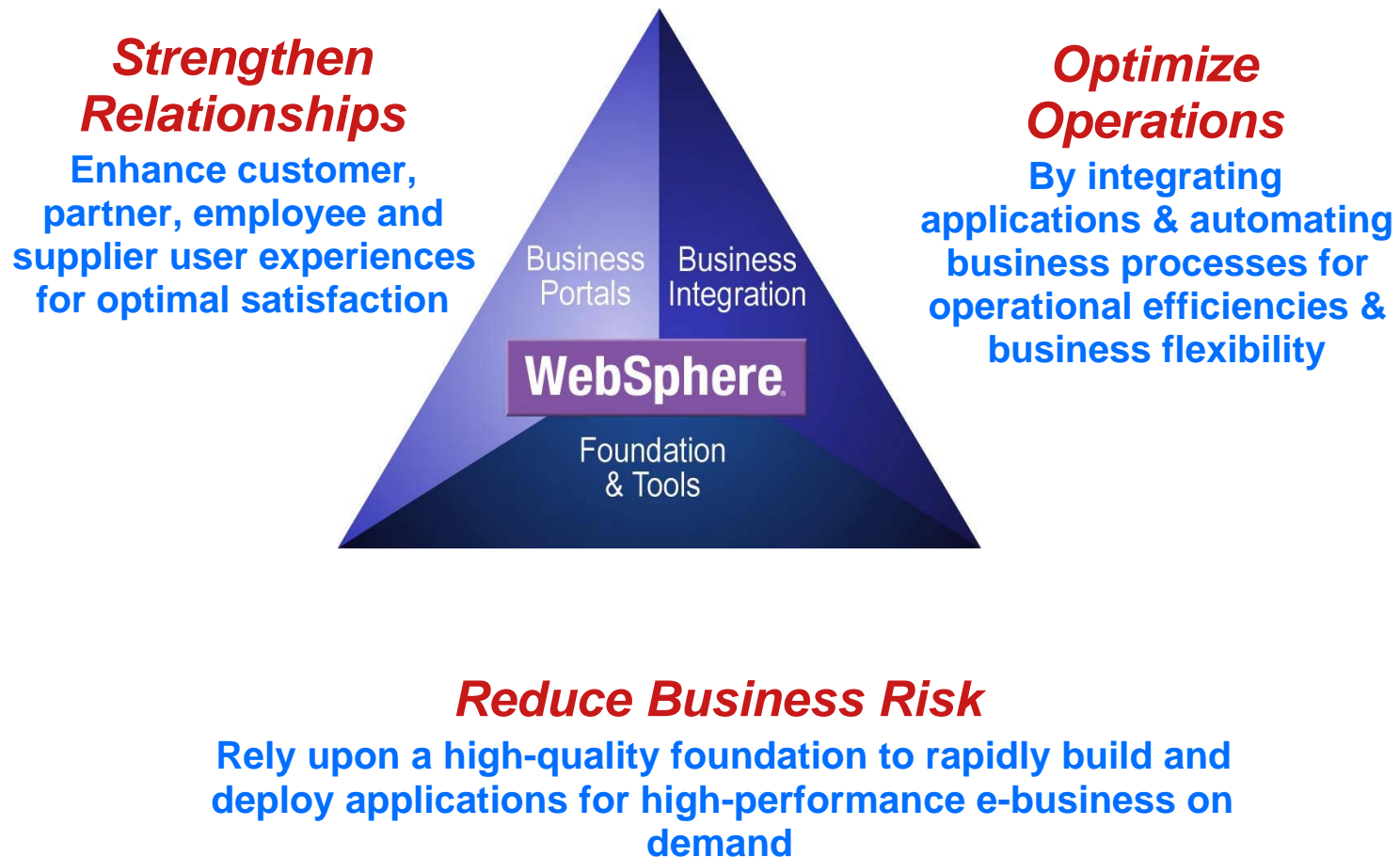
Developers Road Map Points the Way

RSE = Remote System Explorer



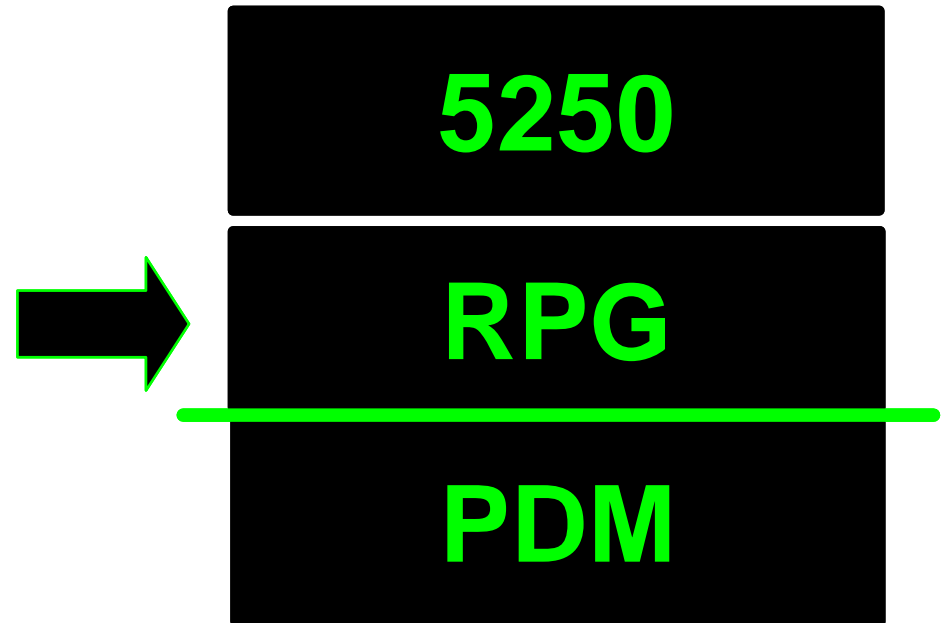
WebSphere Is the Cornerstone for IBM

The leading software platform for e-business on demand



Today

- Most iSeries developers still:
 - ▶ Create or enhance 5250 applications
 - ▶ Use traditional, host-based development environment (PDM, SEU, SDA, RLU, DFU, & system debugger)



```

Session A - [24 x 80]
File Edit View Communication Actions Window Help
Work with Members Using PDM TORAS1FB
File . . . . . QRPGLSRC
Library . . . . . COULTHAR Position to . . . . .
Type options, press Enter.
2=Edit      3=Copy  4=Delete 5=Display  6=Print   7=Rename
8=Display description 9=Save 13=Change text 14=Compile 15=Creat

Opt Member  Type  Text
---
ACLGETST  CBLLE
BARBTEST  PNLGRP
CALLPGM   RPGLE  text 1
CARLOT    CBL
COULTEST  RPGLE
GETDATA   RPGLE  text for getdata
GETDATA2  RPGLE  text for getdata
GETDATA3  RPGLE

Parameters or command
===>
F3=Exit    F4=Prompt  F5=Refresh  F6=Crea
F9=Retrieve F10=Command entry F23=More options F24=Mor

MA a A
Connected to remote server/host toras1fb using port 23
    
```



```

Session A - [24 x 80]
File Edit View Communication Actions Window Help
Columns . . . : 6 76 Edit COULTHAR/QRPGLSRC
SEU==>
FMT FX Ffilename++IPEASF....L....A.Device+.Keywords+++++
***** Beginning of data *****
0001.00 FCUSTOML3 IF E K Disk
0002.00 DCustnoi s like(CUSTNO)
0003.00 D***
0004.00 D CSTRUC E DS extname(customl3:custom01)
0005.00 d field2 10
0006.00 D return s 20

Columns . . . : 1 71 Browse Spool file . . : GETDATA
SEU==>
0000.40 Line <----- Source Specifications -----
0000.41 Number ....1....+....2....+....3....+....4....+....5....+....6....+....
0000.42 Source Listing
0000.43 1 FCUSTOML3 IF E K Disk
0000.44 =====> aaaaaaaaaa
0000.45 *RNF2120 40 a 000100 External descriptions for file CUSTOML3 not
0000.46 ignored.

F3=Exit F4=Prompt F5=Refresh F9=Retrieve F11=Toggle F12=Cancel
F16=Repeat find F17=Repeat change F24=More keys

MA a Mj 07/049
Connected to remote server/host toras1fb using port 23
    
```



Step 1. Better Tools

- **Move iSeries application development to Eclipse Integrated Development Environment (IDE)**

- **Remote System Explorer (RSE)**

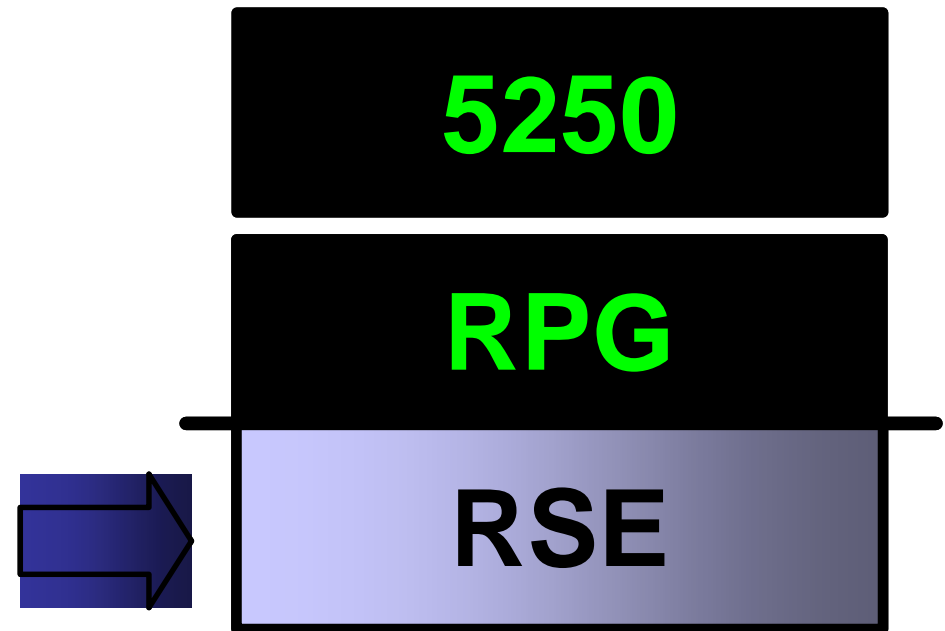
- ▶ Provides iSeries server access from Eclipse IDE (included in WebSphere Development Studio Client for iSeries)
- ▶ 21st century follow-on to PDM, SEU, SDA, RLU, & system debugger

- **Value Proposition**

- ▶ Improves productivity over host 3GL tools
- ▶ Provides easy access to advanced application development tools from IBM & vendors

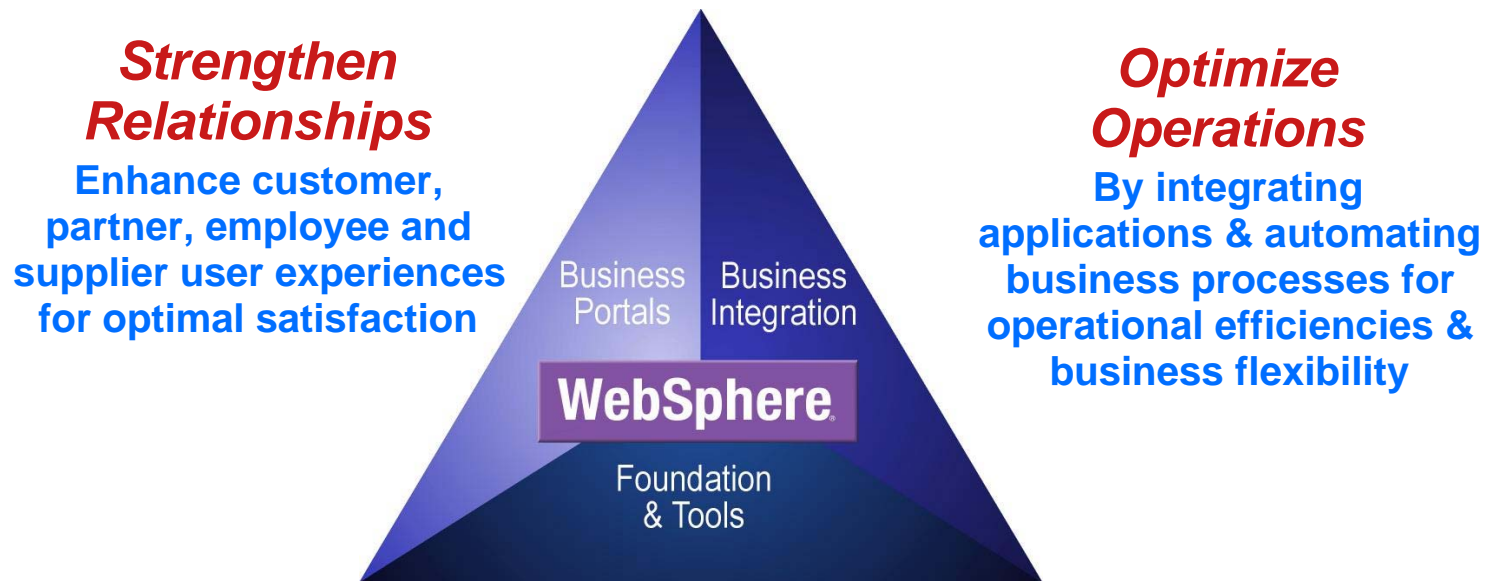
- **Education Enablement**

- ▶ WebSphere Development Studio Client packaging & introduction
- ▶ Eclipse education (how to use)
 - Tool solution developers may be interested in how to extend Remote System Explorer
- ▶ Remote System Explorer education



WebSphere on iSeries

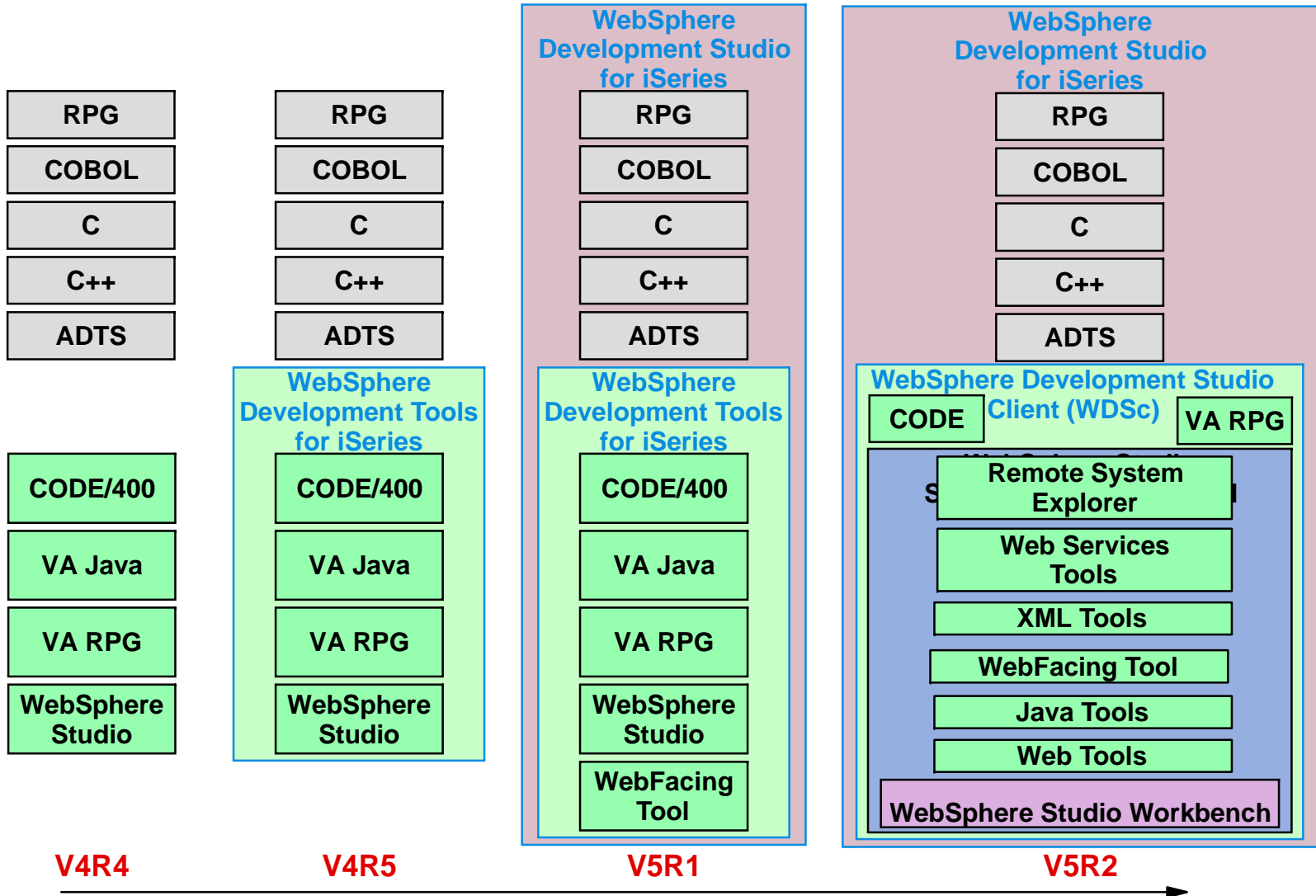
The leading software platform for e-business on demand



Reduce Business Risk

high-quality foundation to rapidly build and applications for high-performance e-business on demand

iSeries Tools Progress



The screenshot displays the Remote System Explorer interface with several callouts highlighting key features:

- Outline view:** Points to the right-hand pane showing a hierarchical tree of program components like Global Definitions, Main Procedure, and Subprocedures.
- SEU-like editor:** Points to the central code editor window showing RPGLE source code with syntax highlighting and error messages.
- PDM-like tree & table views:** Points to the left-hand pane showing a tree view of iSeries Objects and Source files.
- Error list:** Points to the bottom pane displaying a table of error messages.
- Property sheet:** Points to the bottom-left pane showing details for the selected object (RENTCAR).

SEU-like editor content:

```
Row 73      Column 42      Replace
.....C.....Extended
006000      C              IF          (Rent_make = *BL
006100      C              (%TRIM(Rent_make
006200      C              Make_given = *OF
006300      C
006400      C              EVAL
006500      C              ENDIF
006600      C              IF          (Rent_color = *B
006700      C              (%TRIM(Rent_color
006800      C              Color_given = *O
006900      C
007000      C
007100      C
007200      C
007300      C
007400      C* Brute force scan of all records until match
007500      C              READ      CARDB
007600      C              DOW      (NOT %EOF) AND (
007700      C              IF          (Class = Rent_cl
007800      C              (Status = 'N')
007900      C              RNF7503: Expression contains an operand that is not
008000      C              RNF7030: The name or indicator STATUS is not define
008100      C              IF          (NOT Make_given)
008200      C              (Make = Rent_mak
```

iSeries Error List - <TORAS14M>CARDEMO/QRPGLESRC(RENTCAR)

| ID | Message | Line | Column | Severity | Location | Connection |
|---------|--|------|--------|----------|---------------------|------------|
| RNF2120 | External descriptions for file CARDB not found; file ... | 40 | 5 | Warning | CARDEMO/QRPGLESR... | My iSeries |
| RNF7030 | The name or indicator RENTDATE is not defined. | 30 | 81 | Error | CARDEMO/QRPGLESR... | My iSeries |
| RNF7030 | The name or indicator RETDATE is not defined. | 30 | 82 | Error | CARDEMO/QRPGLESR... | My iSeries |
| RNF7030 | The name or indicator STATUS is not defined. | 30 | 73 | Error | CARDEMO/QRPGLESR... | My iSeries |
| RNF7503 | Expression contains an operand that is not defined. | 30 | 73 | Error | CARDEMO/QRPGLESR... | My iSeries |
| RNF7503 | Expression contains an operand that is not defined. | 30 | 79 | Error | CARDEMO/QRPGLESR... | My iSeries |
| RNF7503 | Expression contains an operand that is not defined. | 30 | 80 | Error | CARDEMO/QRPGLESR... | My iSeries |

Properties

| Property | Value |
|--------------------|----------------|
| Name | RENTCAR |
| Number of child... | 0 |
| Source | CARDEMO/QRP... |
| Status | OK |
| Subtype | SRC |

WebSphere Studio



*A single, comprehensive development environment
iSeries Specific or Cross Platform
Common Base*

Step 2. Better User Interface

■ Create Browser-based UI for 5250 Applications

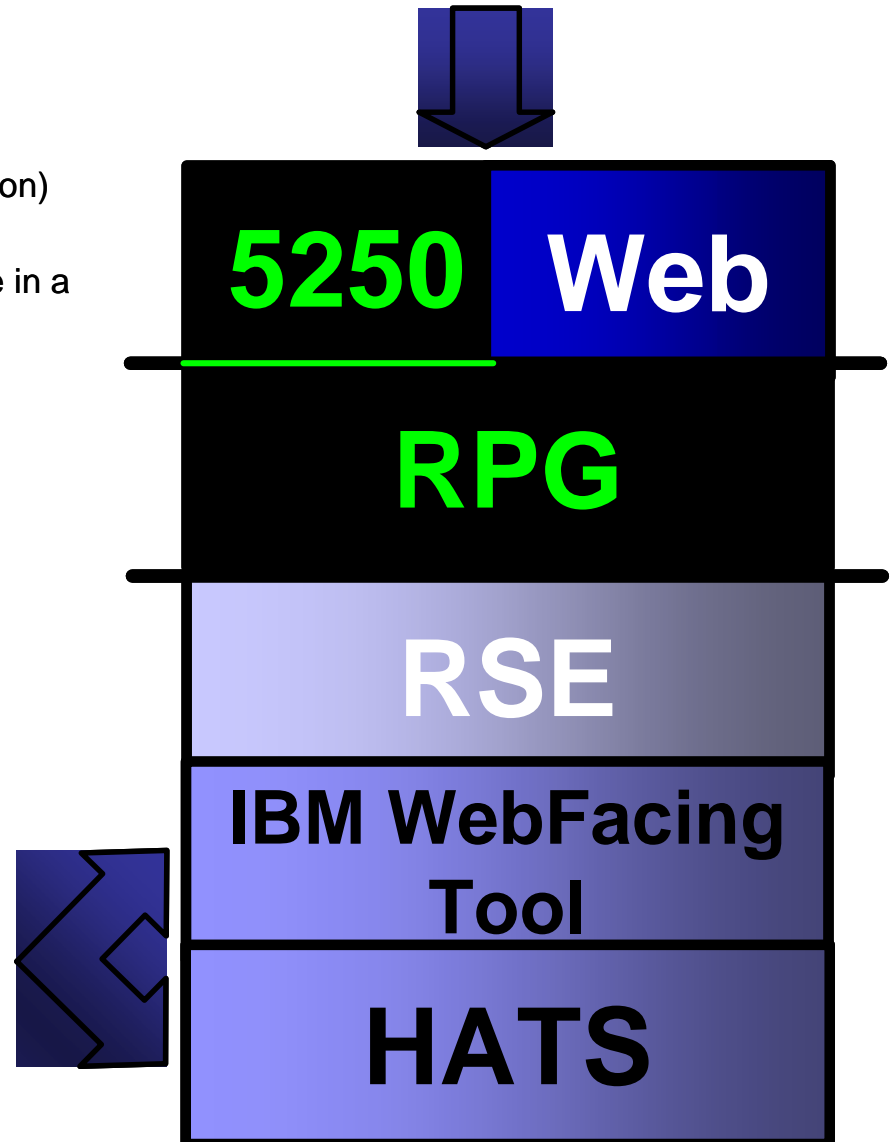
- ▶ Nearly instant conversion to Web UIs
 - At development time for WebFacing (application-by-application)
 - At runtime for HATS (session-based)
 - For IBM WebFacing Tool & HATS, refinements can be made in a repeatable manner
- ▶ No impact to underlying application logic

■ Value Proposition

- ▶ Web User Interfaces offer:
 - Ease-of-use characteristics & reduced learning curve
 - Easy access to applications for remote employees, vendors, & partners
 - Expanded market for solution developer solutions
 - Elimination of interactive cycles when using WebFacing & new iSeries servers—reduces total cost of solution

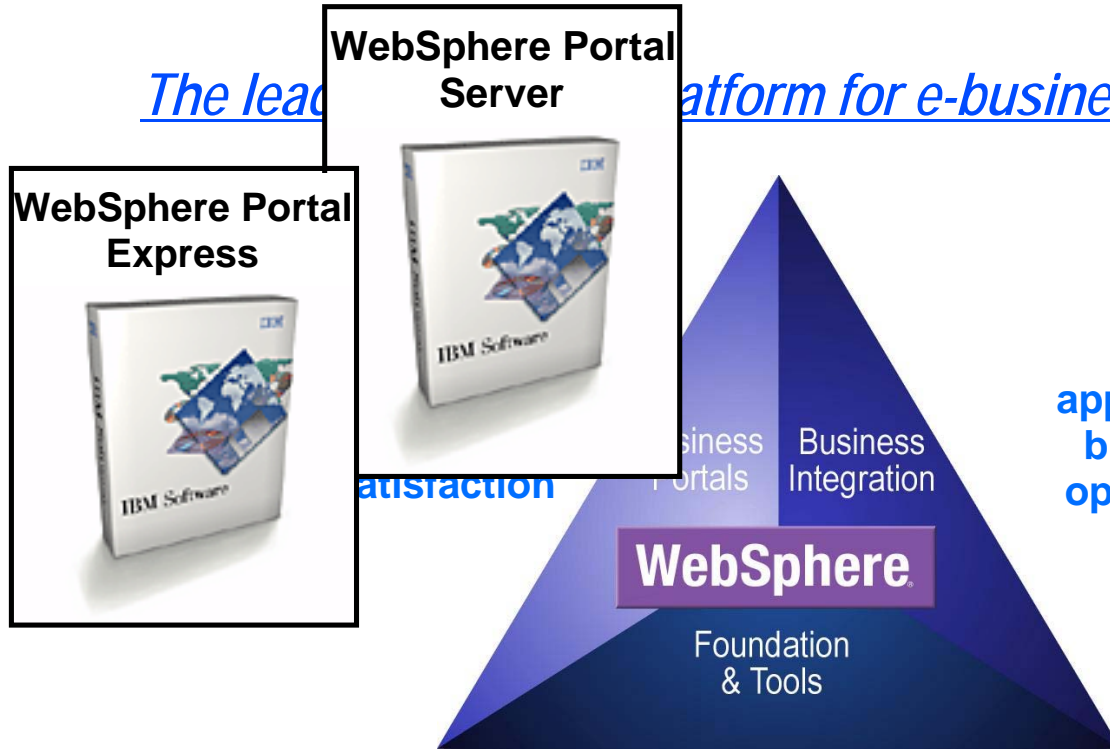
■ Education Enablement

- ▶ IBM WebFacing Tool &/or Host Access Transformation Server (HATS)
 - Plus IBM WebFacing Tool service provider offerings
- ▶ WebSphere Application Server — Express for iSeries
- ▶ Introduction to Web application artifacts, architecture, & terms



WebSphere on iSeries

The leading platform for e-business on demand



Optimize Operations
 By integrating applications & automating business processes for operational efficiencies & business flexibility



Risk
 High cost of ownership
 High risk of failure
 Long time to build and performance e-business on

Better User Interfaces via Refacing

Original
5250



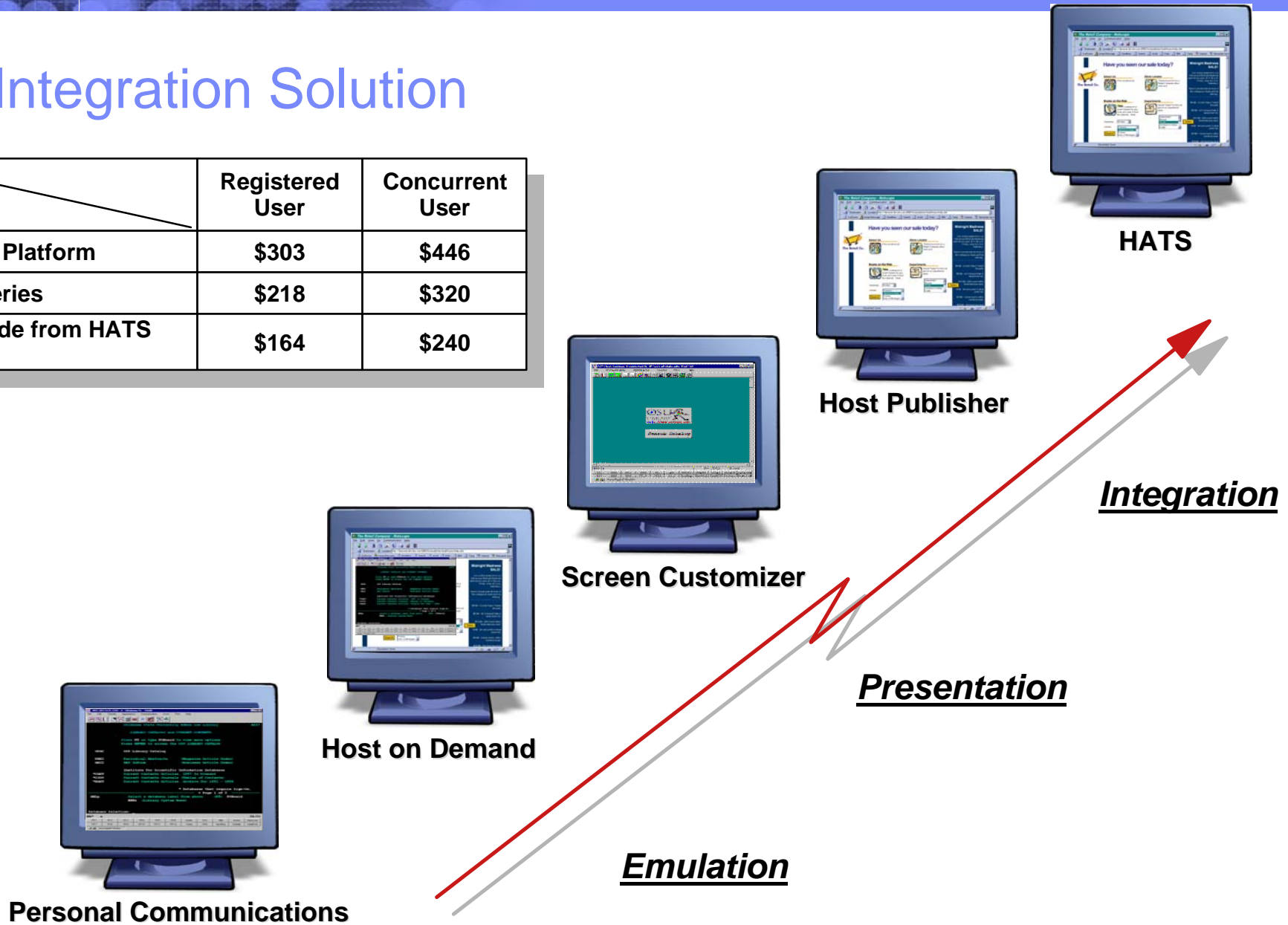
Integrated

Customized

Refaced

Host Integration Solution

| | Registered User | Concurrent User |
|--------------------------|-----------------|-----------------|
| HIS Cross Platform | \$303 | \$446 |
| HIS for iSeries | \$218 | \$320 |
| HIS Upgrade from HATS LE | \$164 | \$240 |



Host Integration Solution includes WebSphere App Server and WSAD

Portal Integration

■ *Functionality*

- **Browser based** - Single point of access
- **Single Sign On** - Global access
- **Portlets** - Windows to all major applications
- **Access** - Secure, filtered access to corporate data

■ *Business Value*

- Funnel and filter to the overwhelming information
- Make better decisions when you have the right information
- Provide a common "desktop" with the proper tools that different jobs require
- Removing stovepipe applications and departments
- More Effective experience

The screenshot shows a web browser window titled "SampleHomePage - Microsoft Internet Explorer" displaying the "IBM WebSphere Portal Server" interface. The page is dated "June 4, 2001 - 1:13 PM". The navigation bar includes "Home", "Shopping", "Favorites", "Admin", and "Misc".

The main content area is divided into several portlets:

- News:** Displays headlines such as "The Economist Headlines", "Cruel, or just unusual?", "Foreigners in their own land...", "Could everything now go wrong?", and "The day of the governors...".
- Task List:** Shows a table with columns "Action", "Description", and "Received". It lists two "Credit Request" actions from May 5, 2001.
- Team Rooms:** Includes links for "Architecture Board", "My department", and "Create a new team room".
- Documents:** Lists "My Documents" including "Security White Paper" and "Customer Presentation". It includes a search box and a "Find it" button.
- Buddy List:** Lists users such as "Doctor Know/MWCorp", "Jade Kiro/MWCorp", and "Nikol Amidas/MWCorp".
- Stock Quote:** Displays the current price for IBM (NYSE: IBM) at \$113.21, along with other market data like "Change Up \$0.32", "Prior close \$112.89", "Open \$113.25", "High \$113.68", "Low \$113.01", and "Volume 804,600".
- Top Value Returns:** A table showing customer names and their values.
- Calendar:** A monthly calendar for June 2001, showing days of the week and dates.

The status bar at the bottom indicates "Done" and "Local intranet".

| CustomerName | Value |
|----------------|-----------|
| Amadeus | 9543.60 |
| Canadian Tire | 1462.00 |
| COMPU Tech. AG | 209315.36 |

Step 3. Better Architecture

■ Create new iSeries e-business solutions

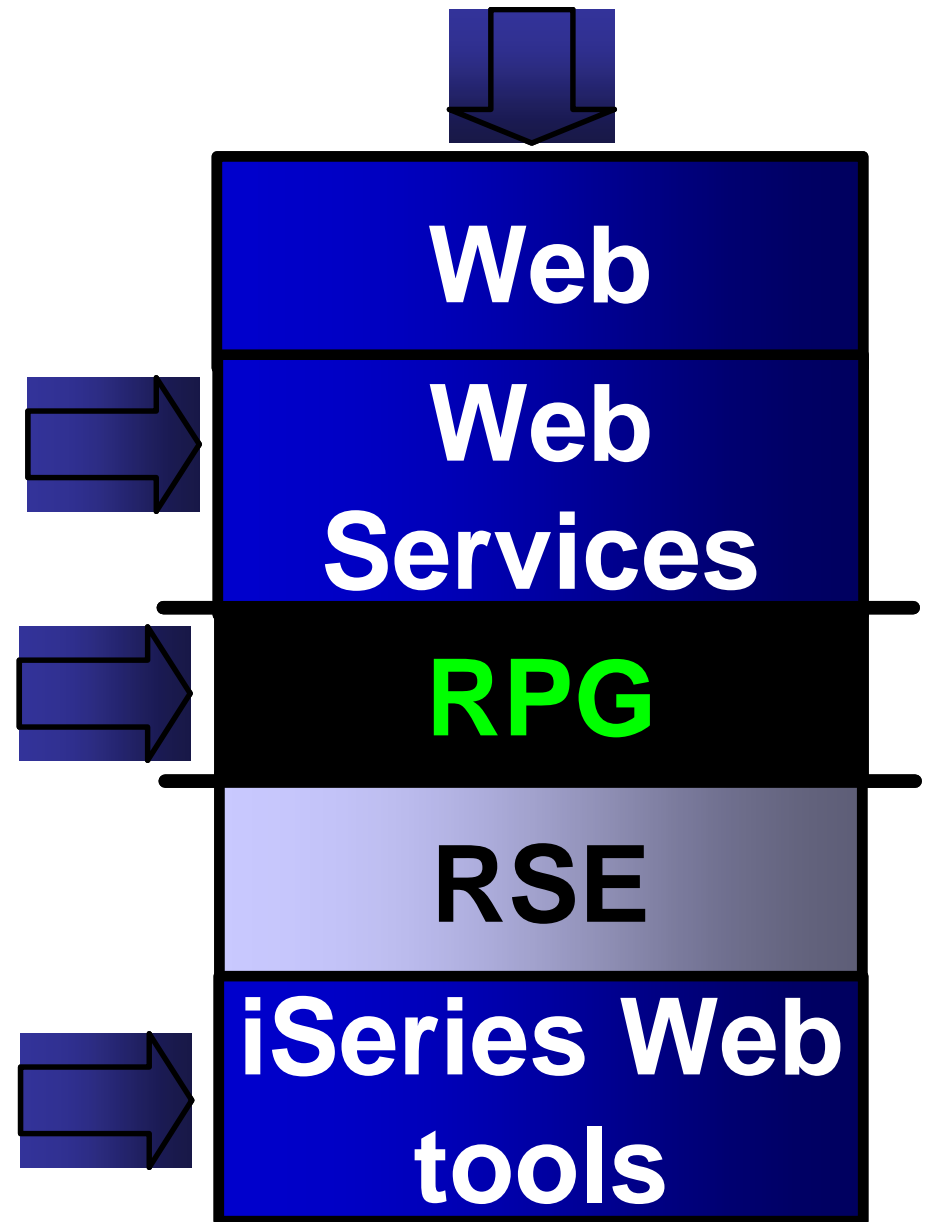
- ▶ Using Web & Web services tools in WebSphere Development Studio Client
 - RPG / COBOL / SQL for business logic
 - iSeries Web Tools to generate other

■ Value Proposition

- ▶ Properly architected new Web applications offer:
 - Easier maintenance / reuse of business logic
 - Respond to increasing demands
 - Quicker support for multiple interfaces: Web, phone, ...
 - Faster support for B2B via Web services
- ▶ iSeries Web Tools offer:
 - Focus on business logic, not J2EE plumbing
 - Reuse SDA skills in Web page development

■ Education Enablement

- ▶ Introduction to e-business
 - Web application artifacts, architecture, terms
 - Introduction to Struts framework for Web applications
 - Introduction to Web services
- ▶ Tools
 - iSeries Web, Struts, Web services (including iSeries Program Call wizard)
- ▶ WebSphere Application Server education



WebSphere on iSeries

The leading software platform for

demand

Strengthen Relationships
Enhance customer, partner, employee and supplier user experiences for optimal satisfaction

Business Portals Business Integration

WebSphere

Foundation & Tools

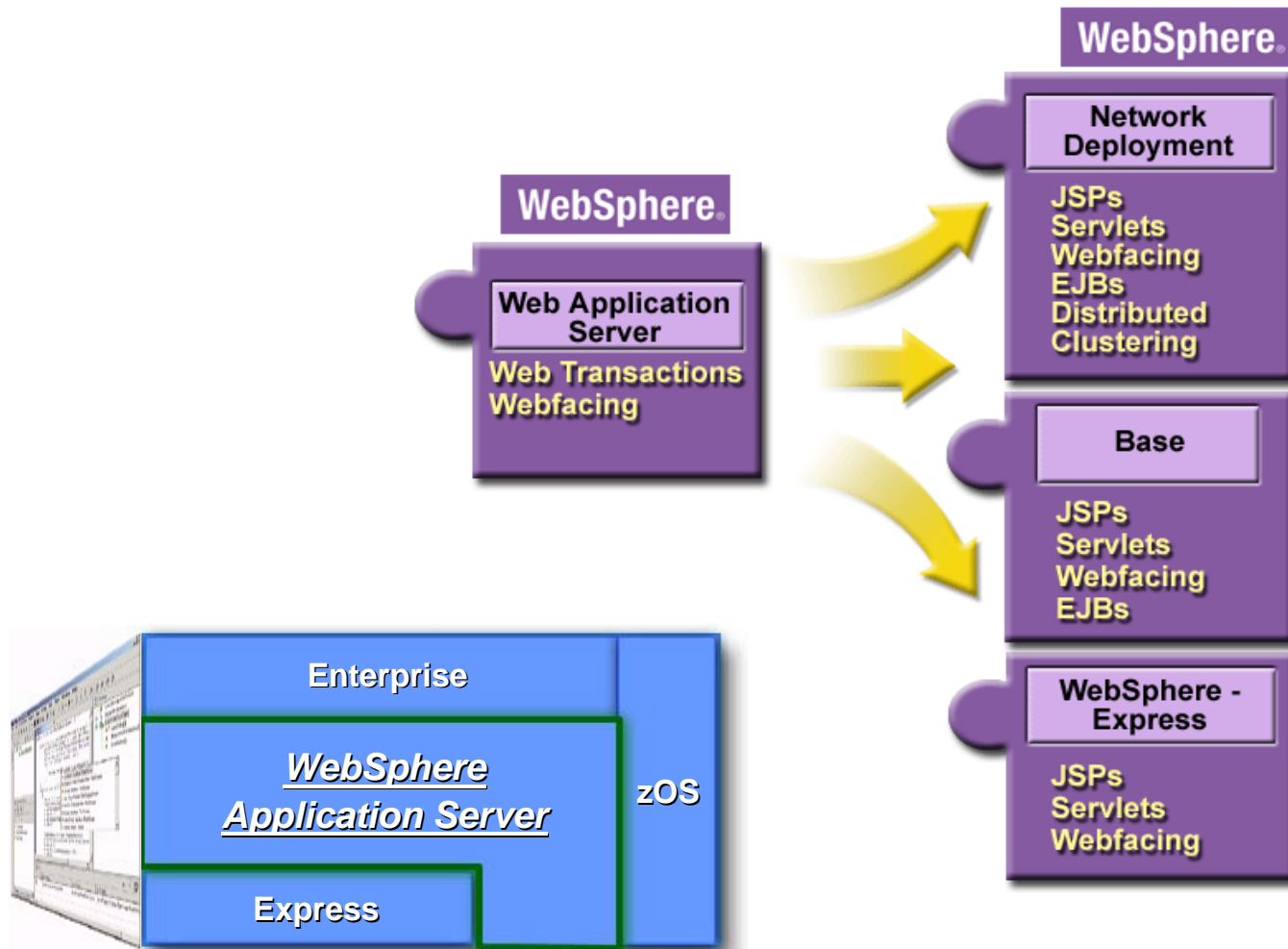


operation busin

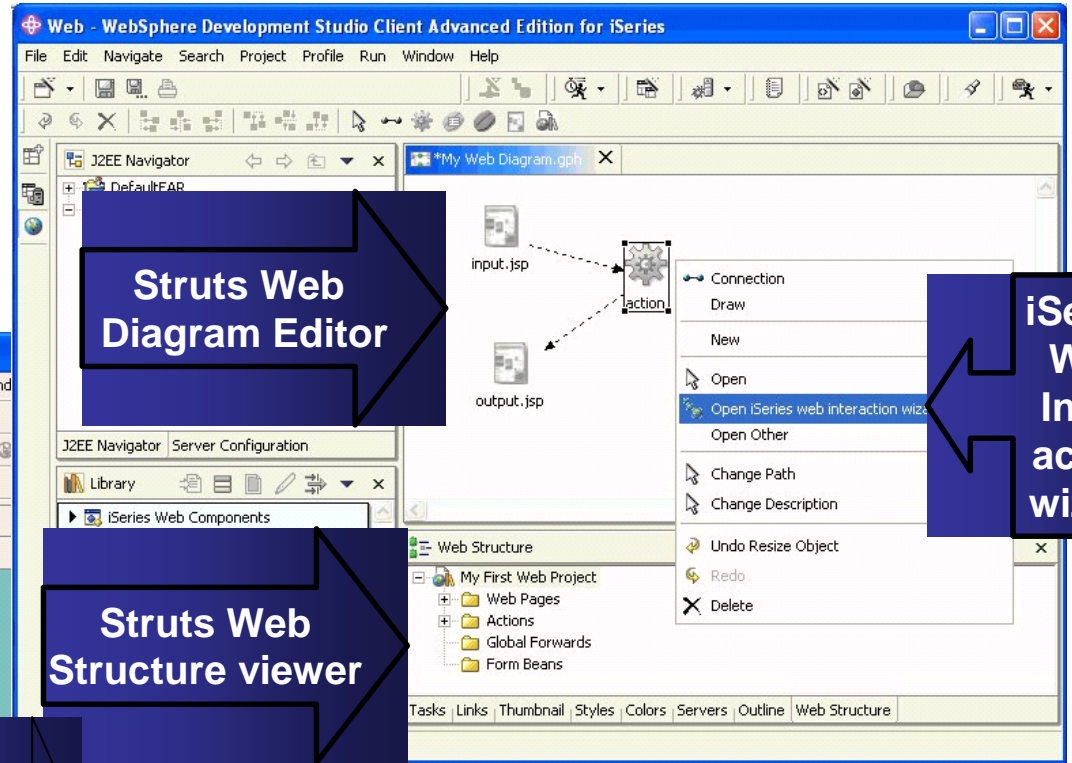
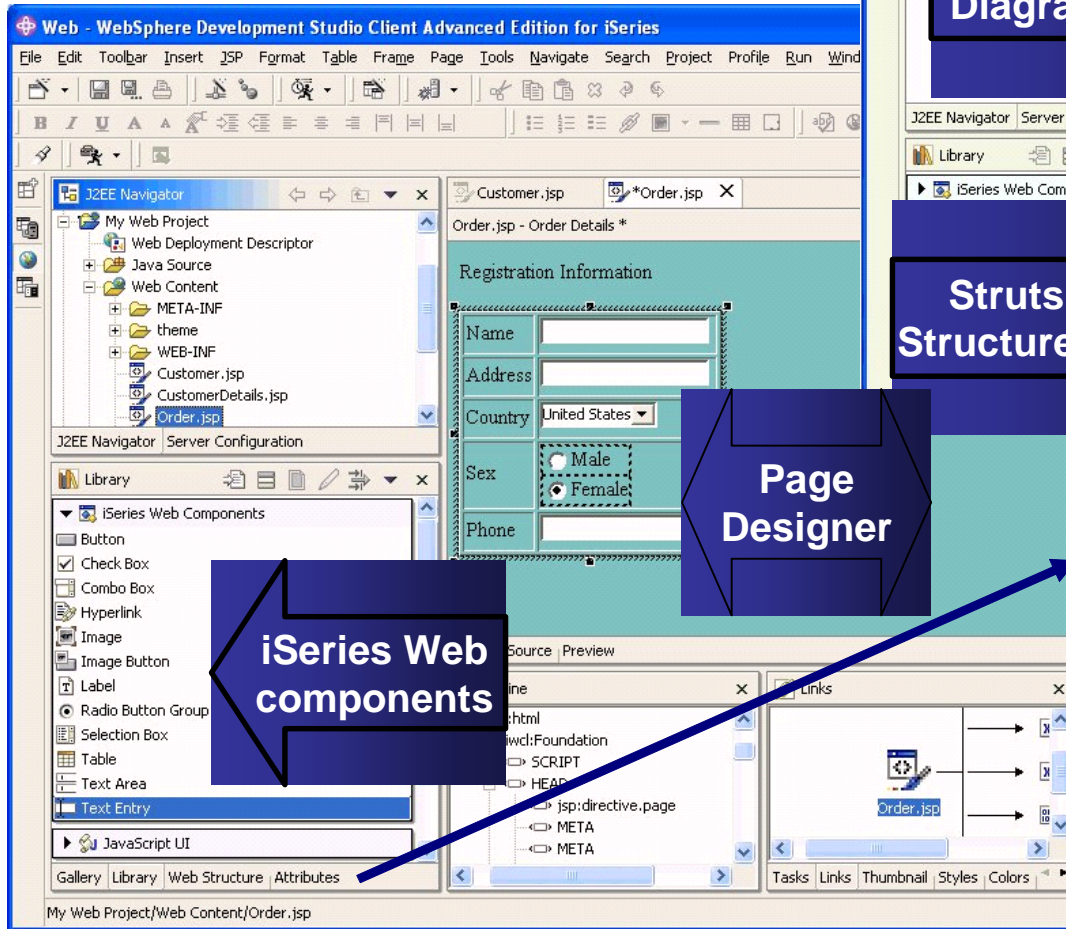
Reduce Business
Rely upon a high-quality foundation deploy applications for high-performance demand



WebSphere Application Server 5.0



iSeries Web Tools

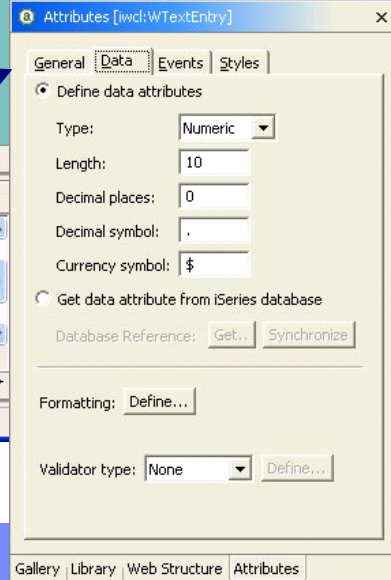


iSeries Web Interaction wizard

Struts Web Structure viewer

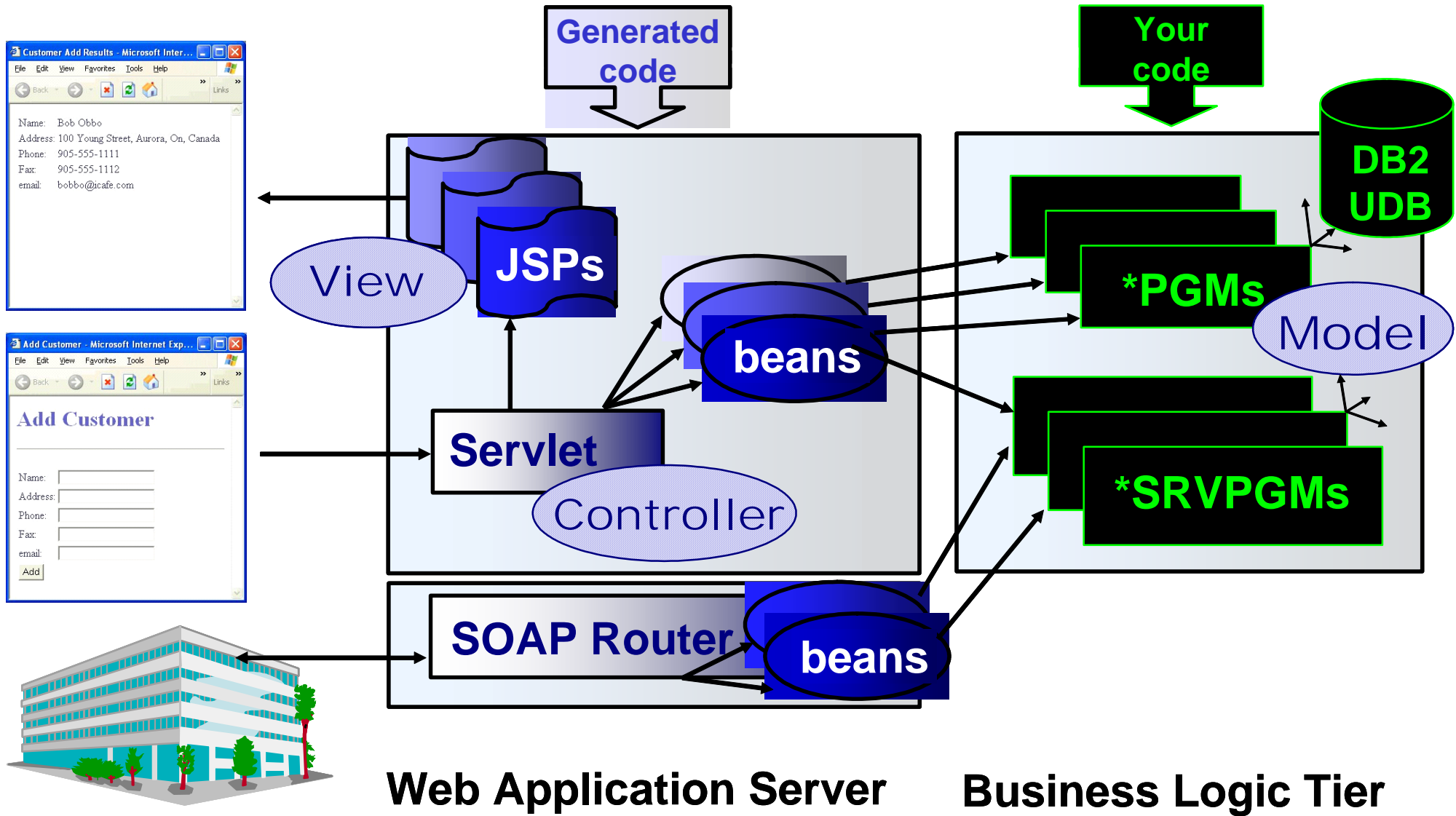
Page Designer

iSeries Web components

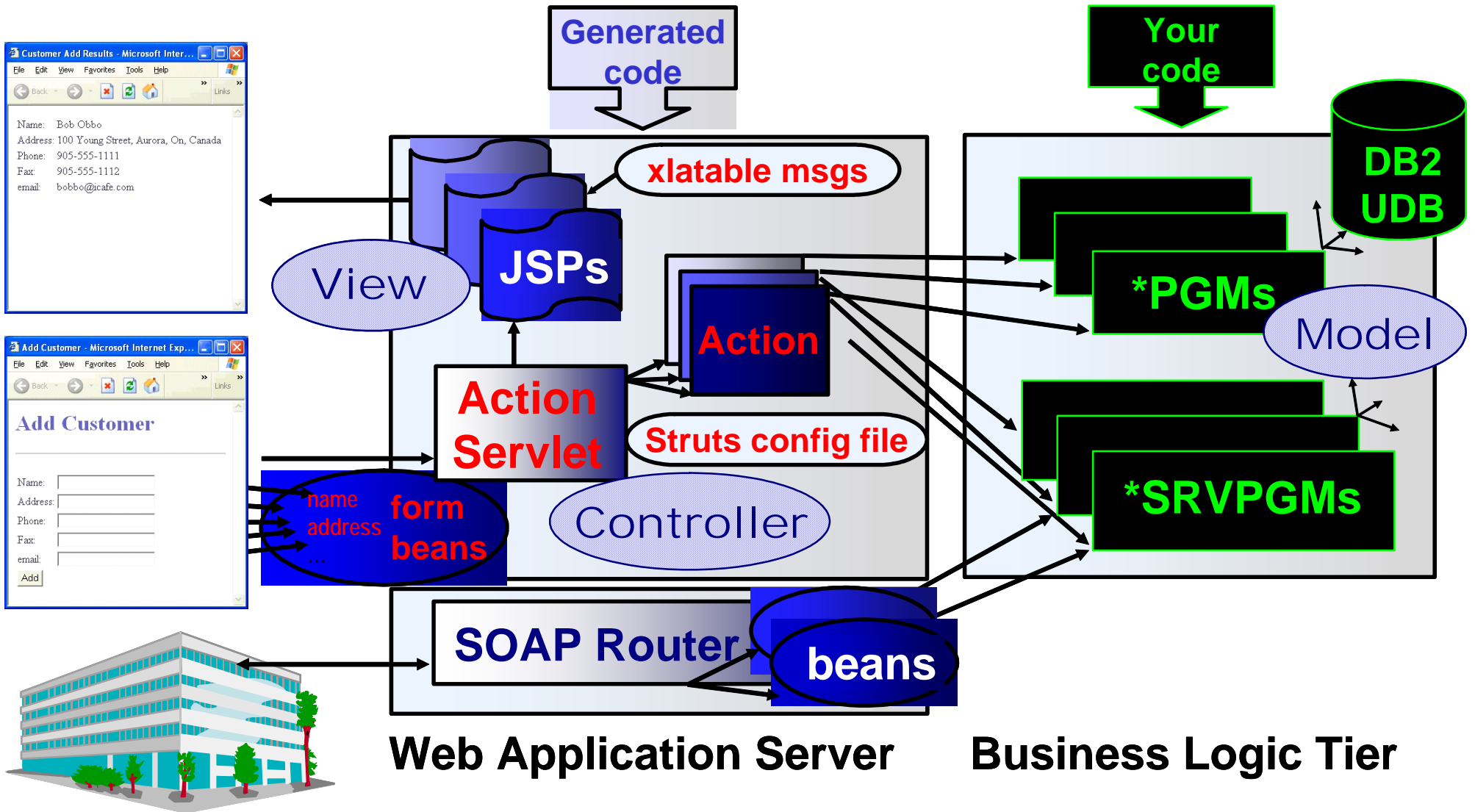


Attributes for iSeries text entry

Architecture of "Better Architecture"



Even Better Architecture with Struts



<http://jakarta.apache.org>

Step 4. Better Portability

▪ New e-business Solutions

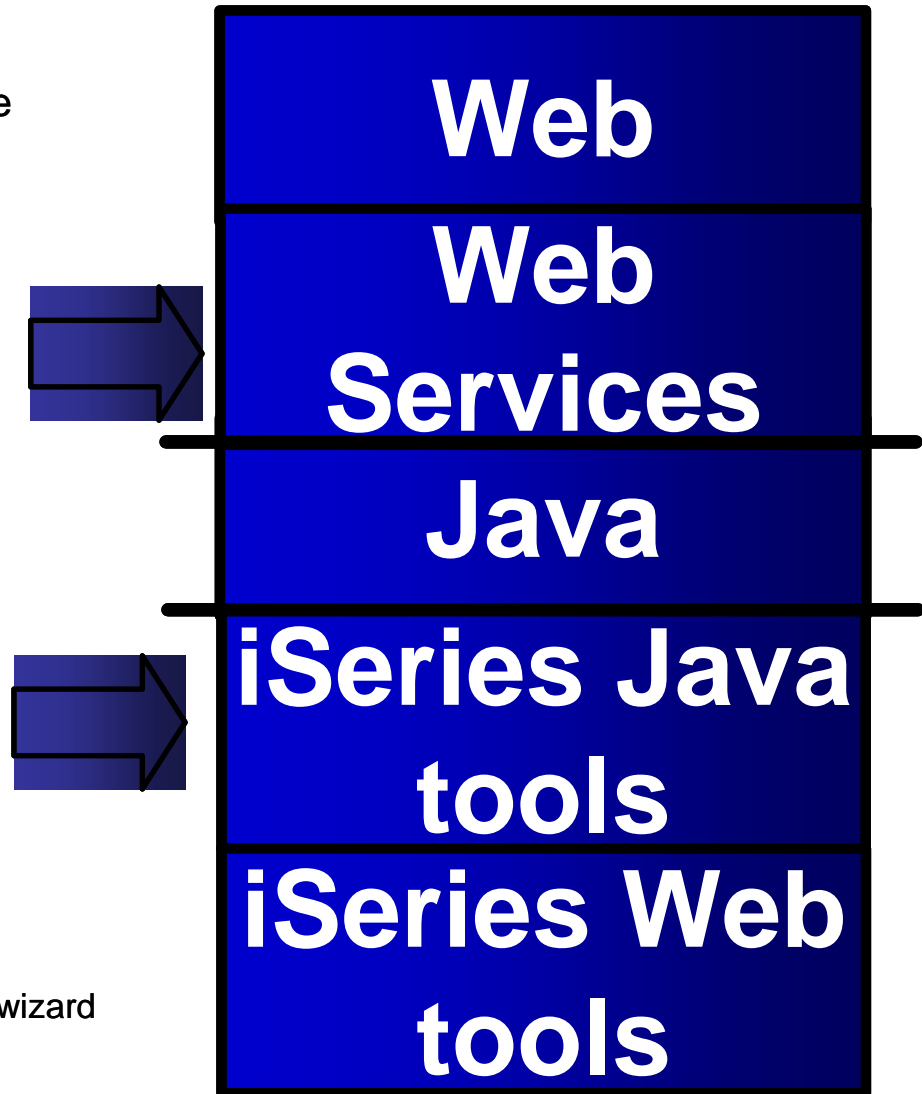
- ▶ Using Java, Web, & Web services tools in WebSphere Development Studio Client
 - Even business logic is written in Java (not EJBs, though)

▪ Value Proposition

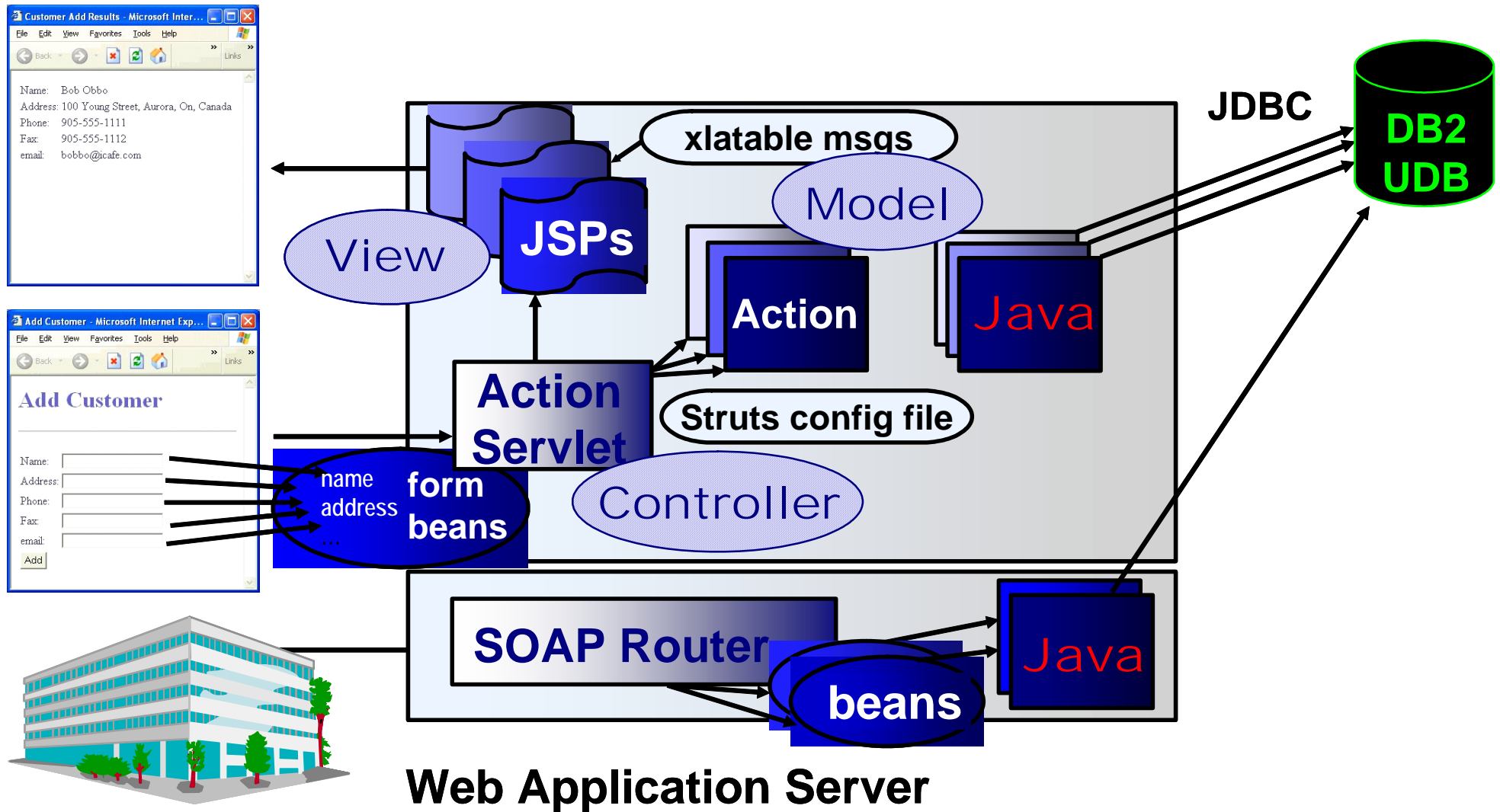
- ▶ Allows developers to create e-business solutions
 - Object oriented & portable
- ▶ Expand market for solution developers solutions

▪ Education Enablement

- ▶ Java
 - Introduction, Advanced, IBM Toolbox for Java, OO
- ▶ Detailed e-business (including Java code)
 - How to write servlets & JSPs, JavaScript, HTML
 - Struts, including Struts actions
 - Web services, XML parsing
- ▶ Tools
 - Eclipse Java tools & iSeries extensions
 - iSeries Web, Struts, Web services, & iSeries Program Call wizard
- ▶ WebSphere Application Server
 - Beyond WebSphere Application Server - Express



Better Portability



Step 5. Better Scalability

■ Create Highly Scalable e-business Solutions

- ▶ Using J2EE, EJB, Java, Web, & Web services tools

■ Value Proposition

- ▶ Create portable, J2EE-compliant solutions for high-volume, high-transaction-rate, e-business environments

■ Education Enablement

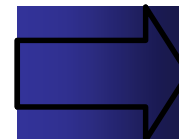
▶ J2EE

- Enterprise JavaBeans (EJBs), Message Driven Beans (MDBs)
- J2EE services (e.g., JMS)
- J2EE security, LDAP, JNDI

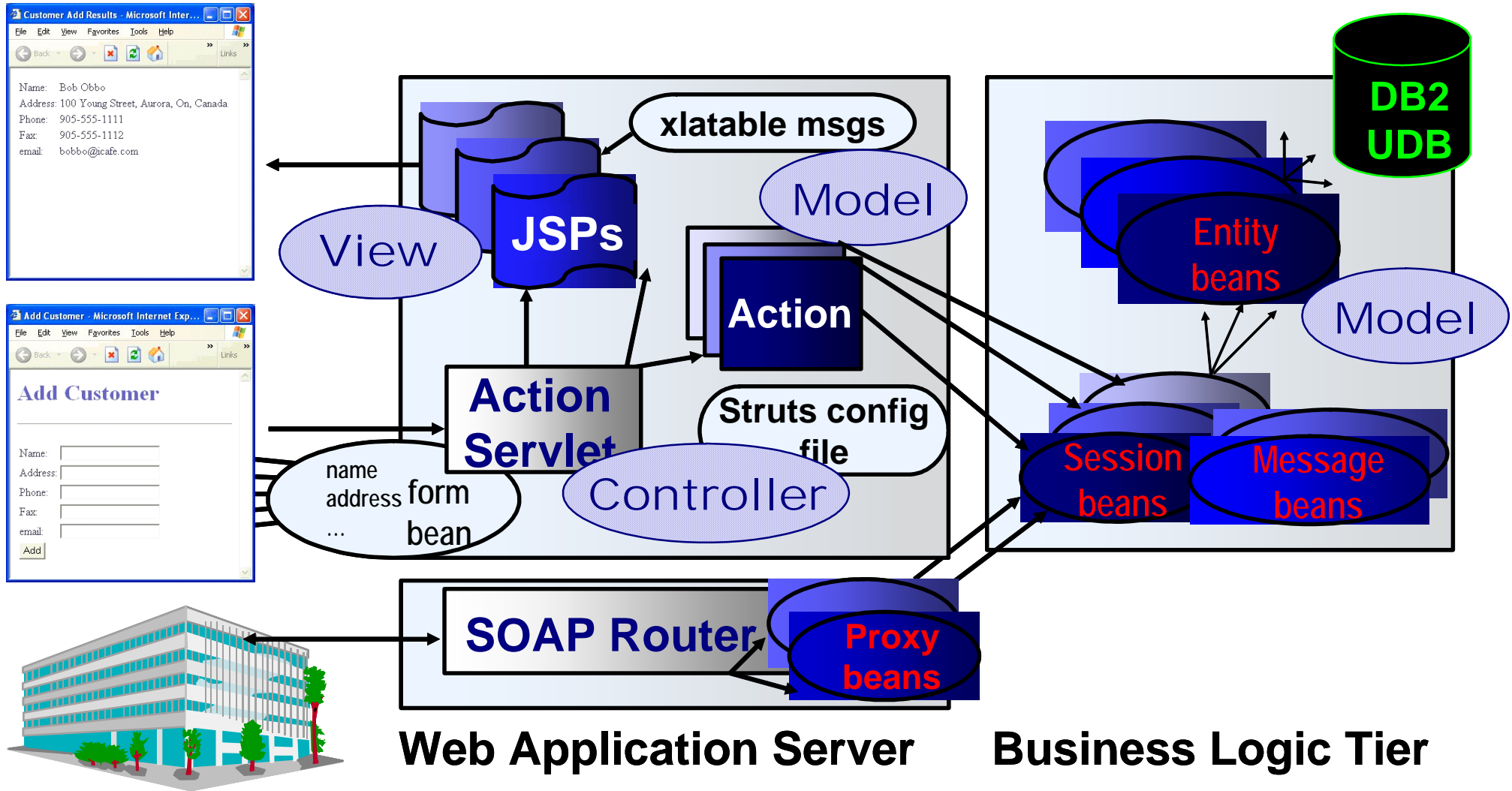
▶ Tools

- Eclipse Java tools, J2EE tools, & iSeries extensions in WebSphere Development Studio Client
- Tools: iSeries Web, Struts, Web services (including iSeries Program Call wizard)

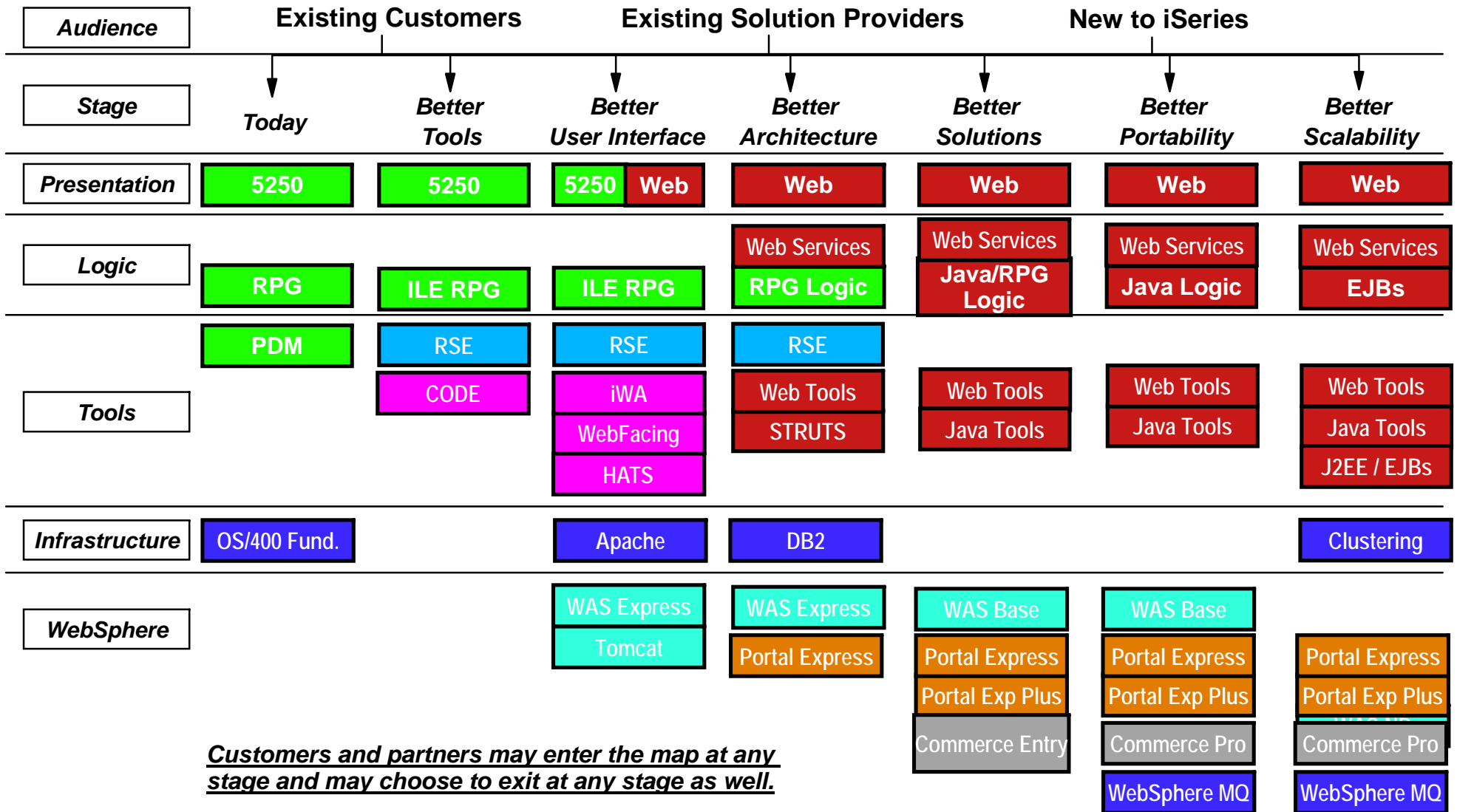
▶ WebSphere Application Server V5.0 & ND



Better Scalability



Developers Road Map



Customers and partners may enter the map at any stage and may choose to exit at any stage as well.

RSE = Remote System Explorer

Search

Home |
 Products & services |
 Support & downloads |
 My account

Servers > IBM eServer Solutions Enablement >
IBM @server

iSeries Developer Roadmap

Executive overview

Roadmap description

Learning path

Learn more...

- Overview
- Today
- Better tools

- Better user interface
- Better architecture

- Better portability
- Better scalability

[Next page →](#)

This chart describes a roadmap - discrete, achievable steps that move developers and applications on the path to an excellently implemented Web future.

[click for larger version](#)

Starting from the left, this is where most IT shops that use the iSeries platform and Business Partners are today. Typically, day-to-day development tasks still involve building and maintaining green-screen applications via traditional 5250 tools such as Programming Development Manager (PDM), Source Entry Utility (SEU), and Screen Design Aid (SDA).

The first step to Web application enhancement involves embracing modern tools to do the same development work previously accomplished via PDM, SEU, and SDA (see the "Better Tools" column).

The next step, which is considered to be urgent by end users, is a better user

IBM eServer Solutions Enablement

Enablement roadmaps & resources

Technical resources

Education

News & events

Marketing resources

Selling resources

Feedback

Related links:

- IBM eServer
- IBM PartnerWorld
- developerWorks
- IBM Developer Solutions
- IBM eServer solution networks

<http://www.ibm.com/servers/eserver/series/roadmap/index.html>



 Search

[Home](#) | [Products & services](#) | [Support & downloads](#) | [My account](#)
[Products](#) > [Servers](#) > [Education](#) > [Roadmaps](#) > [iSeries Roadmaps](#)


Your source for IBM @server™ and TotalStorage® education



iSeries Developer Roadmap

Better Architecture

After mastering Better Tools in the WebSphere Development Studio and applying Better Interfaces, this is the first step along the road to J2EE implementation that involves developing new business logic.

To achieve a Better Architecture, an understanding is needed of following products and technologies:

- [Writing modular callable Code](#)
A general understanding of separating business logic from Integrated Language Environment (ILE), DB2 features, SQL smaller modular reusable components offers the flexibility of an extendable and extensible application.
- [Developing a Web Application](#)
A general understanding is needed of Java Beans, servlets, JavaServer Pages and their purpose in a Model, View, Controller architecture.
- [STRUTS](#)
Using a proven open framework for application architecture template that is reusable for all your application needs.

Fast path

← [iSeries](#)
[Technical Skills](#)
[Education Home](#)

→ [Better Tools](#)

To learn more about database

Face-to-Face Learning

[Enroll in course S6145 - DB2 UDB for iSeries \(1 day\)](#)

[Enroll in course - DB2 Performance workshop](#)

Web-based Learning

[Register for - DB2 UDB for iSeries online courses](#)

Documentation, Redbooks, white papers, etc.

[IBM Solutions Enablement Web site - DB2 UDB for iSeries](#)

[Explore - DB2 UDB for iSeries white papers](#)

[Return to top of page](#)

→ Select a country

← Servers

Education

- What's New
- On-line Education
- Classroom
- Redbooks/Workshops
- Roadmaps
- Media
- Events
- Certification
- IBM Scholars Program
- Contact Campus

Related links:

[IBM Training](#)
[PartnerWorld](#)
[IBM @server](#)
[Technical Support](#)
[IBM TotalStorage](#)

From iSeries Home Page

Hardware

Small to Medium Enterprises



Models
800, 810

Features
Silicon-on-insulator (SOI) processors; support for multiple operating environments, Web modernization, dynamic logical partitioning, 5250 Online Transaction Processing (OLTP); WebSphere-Express for iSeries, and e-business and data management tools

Processors
1-Way, 2-Way

Processor performance
300-2700 CPW

Memory (maximum)
16 GB

Disk (maximum)
14 TB

Medium to Large Enterprises



Models
825, 870, 890

Features
POWER4 processors, support for multiple operating environments, On/Off Capacity on Demand, WebSphere Express - for iSeries, 5250 Online Transaction Processing (OLTP), dynamic logical partitioning, support for Windows servers, e-business and data management tools, and Linux

Processors
3/6-Way, 5/8-Way, 8/16-Way, 16/24-Way, 24/32-Way

Processor performance
3600-37400 CPW

Memory (maximum)
256 GB

Disk (maximum)
144 TB

Greenstreak II

GREENSTREAK

ENHANCE. MODERNIZE. EXPLOIT.

Need directions?

→ [iSeries Developer roadmap](#)

Special report

iSeries: Three in one

WebSphere
Web Serving

→ [See the full details](#)

Questions?

