

# IBM *@server*

*Integrated Application Data and Transaction Server  
Products and Services*

**CATALOG**  
U.S. Version

SPRING/SUMMER 2002



**WITH SO MUCH TO WATCH OVER,  
HOW WILL YOU KEEP IT ALL SECURE?**

---

LET IBM *@server* SECURE YOUR e-business WITH OPEN, FLEXIBLE PROTECTION.

**visit**

**[ibm.com/shop/iseries](http://ibm.com/shop/iseries)**

**call 800 426-2255**

# It's easy to order with IBM Everything you need... fast



## Phone

**Call 800 426-2255** (800 IBM-CALL),  
Monday-Friday 8AM - 8PM (ET)



## Fax

**800 242-6329** (800 2 IBM-FAX)  
Write your customer number, name and phone number on one of your company's purchase orders and fax it to us.



## Web

**ibm.com**  
**ibm.com** is the fast, easy, secure way to order online from IBM. Find the product you're looking for and just add it to your shopping cart. It's that easy! You can shop online 24 hours a day (your order will be processed Monday to Friday between the hours of 8a.m. - 8p.m. ET). We accept credit cards and purchase orders.

Or send us an e-mail to  
**ibm\_direct@vnet.ibm.com**



## Mail

Send purchase order to:  
**ibm.com Center**  
Dept. AC202  
P.O. Box 2690  
Atlanta, GA 30301



## Local IBM Representative

Your local IBM Marketing team will continue to support you with any IBM product you select from this catalog. For the marketing representative nearest you, dial **800 426-4968**.



## Your IBM Business Partner

You may find it convenient to order your catalog products through your IBM Business Partner\*. (Prices for products available from Business Partners may vary.)

## Free shipping

You pay no shipping charges on most products in this catalog (for normal delivery). No shipping fees means more money back into your business.

## Free QuickShip 2-day delivery

Many products in this catalog are eligible for QuickShip delivery. Place your order by 1:00PM (ET) and we'll ship your products the same day, delivering them within 48 hours. Next day and Saturday deliveries subject to charge.

## "Test-drive our Software" software guarantee

AS/400\* and iSeries Software and selected IBM licensed programs come with a two-month, unconditional guarantee. During the two-month guarantee period, you may discontinue the software for any reason and IBM will credit you for its full price.

## Backed by IBM

Every IBM product in this catalog is backed by an IBM Limited Warranty. For IBM hardware products, if the product does not perform as specified during its warranty period, IBM will repair it or replace it. If we are unable to do either of these, we will refund your money. The warranty period for new iSeries and AS/400 hardware products is one year and includes 7-day-a-week, 24-hour service.

See the IBM Limited Warranty for full details and limitations. Complete documentation regarding limited warranties is available by calling 800 426-2255. Non-IBM products are provided on an "as is" basis, but may be covered by the appropriate manufacturer's warranty.

## One-stop financing

IBM Global Financing offers preferred rate financing for iSeries and AS/400 hardware, software, maintenance, training and services provided by IBM and IBM Business Partners.

## Free up your cash with leasing

Looking to improve your cash flow and create a hedge against inflation? A host of low-interest leasing plans on IBM hardware are available.

### FCC Classifications:

This catalog contains products classified under Federal Communications Commission (FCC) regulations. Product classifications are defined as follows:

**FCC Class A** - Suitable for non-residential use. See product documentation for complete FCC statements.

**FCC Class B** - Suitable for home or office use. See product documentation for complete FCC statements. NOTE: Installing an FCC Class A adapter in an FCC Class B system changes the system classification to FCC Class A and makes it unsuitable for use in a residential environment.

All iSeries and AS/400 system products are Class A except for the following Class B products: Models 600, S10 and 9401-150, UPS models 9910-080 and 9910-140, E and G Series monitors.

### Delivery to Puerto Rico and the U.S. Virgin Islands

Due to the extra costs of delivery, a 7% surcharge is added to all hardware (purchase or lease).

### Availability and Limitations:

The software and hardware products in this catalog are available through July 31, 2002. The most current edition of this IBM Catalog supersedes any previous edition of this catalog. Prices and charges in this catalog are subject to change without notice and do not include applicable sales taxes. Products may be withdrawn at any time. IBM is not responsible for printing errors in this catalog which result in pricing or information inaccuracies. IBM hardware products are manufactured from new parts, or new and used parts. In some cases, the hardware may have been previously installed. Regardless, our warranty terms apply. All orders are subject to normal IBM credit approval. All performance data contained in this publication was obtained in a specific

operating environment and is presented as an illustration only. Results obtained in other environments may vary. Any Web-based access charges are the responsibility of the customer and not IBM Corporation or its subsidiaries.

### Agreements and Warranties

Products featured in this catalog are offered under the terms of either the IBM Customer Agreement (ICA) or the IBM International Program License Agreement (IPLA) for the use of commercial customers and are not for resale. Non-IBM programs and products are provided on an "as-is" basis. However, non-IBM manufacturers or suppliers may provide their own warranties. Program warranty information is included with the program or in the IBM Customer Agreement. Complete documentation, including contracts, warranties, prices, volume discounts and technical descriptions are available by phone, fax or mail. Simply dial 800 IBM-CALL.

## Questions?

### We're always ready to help

Our iSeries and AS/400 sales specialists are just a phone call away with the latest product information and technical advice. Just dial 800 426-2255 with any questions you may have about our products and services. We'll help you select and configure the right solutions for your needs.

### Charge it

You can easily charge your purchases under \$10,000 to the personal or corporate card of your choice: American Express, MasterCard or Visa.

### Not looking to buy? Rent it

Are you facing a peak business period or short-term workload beyond the scope of your current computing resources? Our short-term hardware rental option is the perfect solution. It also lets you try out needed IBM hardware before making a purchase decision.

### Product info at your fingertips

- Visit for the latest iSeries and AS/400e news, product information, solutions and support: [ibm.com/iSeries](http://ibm.com/iSeries)
- Purchase online at: [ibm.com/shop/iSeries](http://ibm.com/shop/iSeries)
- Information subscription service: [ibm.com/isource/world/](http://ibm.com/isource/world/)
- IBM Web site: [ibm.com](http://ibm.com)
- IBM On-line catalog: [ibm.com/servers/eserver/ecatalog](http://ibm.com/servers/eserver/ecatalog)

### Federal discounts

Are you a federal agency eligible for IBM discounts? We'll be happy to work within your current federal contract and discount structure. Just call IBM Direct and ask for the Federal Team on discounts.








### If you don't see it, call

The programs and products available in this catalog represent only a portion of the iSeries and AS/400 hardware and software from IBM.

### Volume discounts

Many business customers enjoy significant savings through IBM volume discounts. If you're one of them, we'll be happy to honor your existing discount arrangements. Just give us a call.

### Watch for these icons:

 <p><b>QuickShip</b> 24 hours</p>	 <p><b>Custom QuickShip</b> 7 days</p>	 <p><b>New</b></p>	 <p><b>Product Update</b></p>	 <p><b>Reduced Prices</b></p>
<p>QuickShip Service can ship your product within 24 hours of your order</p>	<p>Custom QuickShip Service can ship your product within 7 days of your order</p>	<p>Newly announced product or model</p>	<p>Recently updated product</p>	<p>Prices on the product or service have recently been reduced</p>
 <p><b>Limited Warranty</b> <b>See Below</b></p>	 <p><b>Software Subscription</b></p>			
<p>Warranty of your product</p>	<p>Software updates</p>			

# Contents

## 2 How to Order

<b>4 Software</b>	17 Content Manager and EIP
5 Operations Navigator	18 WebSphere Dev. Studio
6 OS/400 V5R1	20 MQSeries
9 Linux	20 Database Tools Family
10 Domino/Notes Products	25 Systems Management
14 WebSphere Applications	28 Printing Software Family
16 Connect for iSeries	32 Keyed Media
	33 Software Subscription

4  
**Software**

## 34 Index

34  
**Index**

*e-business the sure way, the secure way*

## Software



iSeries offers e-business solutions ready for fast deployment

As the e-business economy continues to grow, business-to-business (B2B) interaction – the use of Web-based technologies and extended enterprise solutions to conduct business between two or more companies – is becoming mandatory to stay competitive. The Internet has introduced many new opportunities for businesses to communicate with each other and with their customers. Effective B2B solutions make e-business transactions easier, speeding up the supply chain, facilitating the buying and selling of products, and ultimately getting to market quicker and more efficiently.

B2B activity leverages the entire range of enterprise solutions from vertical core applications that form the foundation of today's e-business to supply chain management (SCM), customer relationship management (CRM), Business intelligence (BI), and other solutions that extend those core applications. Web technologies such as Domino™, Web application serving, wireless device support, Extensible Markup Language (XML) and Java™ are accelerating true collaborative commerce and facilitating the movement toward e-marketplaces – linking multiple buyers and sellers together in a central location.

**iSeries: ideal platform**

IBM iSeries is the ideal platform to help you leverage these new technologies and business models. iSeries is designed with B2B in mind, offering the manageability, reliability and flexibility you need to handle today's complex solutions – so you can focus on business, not technology. The iSeries also offers a broad portfolio of solutions and capabilities from some of the top solutions providers in the world.

**DB2 Universal Database (UDB)** – DB2 UDB is fully integrated, making your data available to all of your e-business applications.

**DB2 Universal Database Extenders for iSeries** – two major functions extend DB2:

- Store & manage your XML documents in DB2 databases with new function & data types in DB2 XML EXTENDER
- Search and extract data from documents stored in DB2 databases or files with the DB2 TEXT EXTENDER.

**Business Intelligence Tools** – New products including DB2 OLAP (Online Analytical Processing), DB2 Warehouse Manager, DataPropagator/400 and QMF for Windows bring advanced data warehousing tools to iSeries users.

**Lotus Domino** – A flexible combination of groupware, e-mail and Web server that ties directly into DB2 UDB and supports e-collaboration. Now iNotes™ access for Microsoft Outlook and Domino on iSeries allows you to continue to use your Microsoft Outlook client and take advantage of additional function and reliability of a Domino Server running on iSeries.

**iNotes Web Access** is a next generation Web client that delivers leading Domino messaging, collaboration, and PIM (Personal Information Management) capabilities to Web browsers. For the first time, browser users will be able to take full advantage of Domino services through an intuitive, easy-to-use interface both on- and off-line, seamlessly.

**WebSphere Application Server** – Supports open, reusable Java server components that leverage your existing resources, shorten development cycles and ease your administrative load.

**WebSphere Commerce Suite** – An integrated e-commerce solution that provides the framework to conduct e-business in a very secure, scalable environment, including catalog creation, merchandising and payment processing.

**WebSphere Transcoding Publisher** – Optimize your wireless Web experience:

- Extend your existing Web content to new devices, reach new markets with new services, without re-authoring expense
- Deliver efficient content to a variety of users across wireless networks
- Customize presentation content and enable effective interaction with customers, business partners and employees

**VisualAge® for Java and WebSphere Studio** help you build Web-enabled enterprise applications. VisualAge for Java provides proven support for building and testing applets, Java Server Page, servlets and Enterprise JavaBean.

**IBM WebSphere Host Integration Suite** – A collection of products that Web-enable existing host applications and extend them to new users using Java and HTML.

**MQSeries®** – IBM's award-winning cross-platform application integration middleware that gets your applications reliably communicating with each other even when they're running on different computers or different partitions on the same computer. MQ continues to grow in popularity in end-to-end e-business solutions.

**Connect for iSeries** – extend business-to-business capabilities:

- Plug into e-MarketPlaces
- Integrate into existing back-end systems
- Take advantage of new trading protocols
- Add incremental B2B function to applications

visit

[ibm.com/shop/iseries](http://ibm.com/shop/iseries)

call 800 426-2255

## The new GUI face of OS/400

### OS/400 Operations Navigator



- **Manage xSeries servers directly attached to iSeries via the Integrated xSeries Adapter as well as Integrated xSeries Servers**

- **Manage disks and users on these Windows servers**

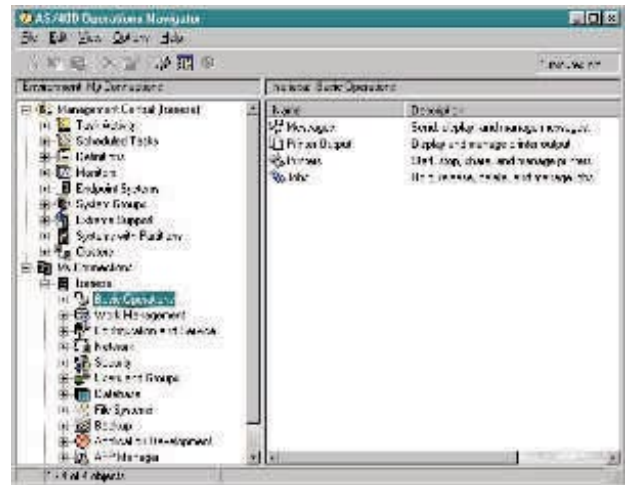
- **Create, delete, copy, link, unlink, and show status for Windows server disks**

- **Manage OS/400 user profiles that are enrolled into a Windows server environment.**

Operations Navigator, the GUI OS/400, provides functions that modernize and simplify iSeries administration. Using these Operations Navigator enhancements, operators and administrators connecting to iSeries servers running OS/400 V5R1 can increase their productivity when performing the following tasks:

#### **DASD Management**

Through Operations Navigator, users can view and manipulate large DASD configurations. This includes the ability to view disks in a physical and logical layout and sort them by size, name or controller. Adding and replacing disk units is simplified with Operations Navigator wizards.



#### **Database Management**

In addition to displaying currently executing SQL statements for a job, Operations Navigator tools provided for database programmers and administrators include Visual Explain, a pictorial view of query optimization that provides information for improving query performance. A Database Detailed Performance Monitor provides the ability to capture and analyze detailed optimizer and database performance information. (This is in addition to the existing database summary performance monitor.) Tables, views, and indexes are enhanced with a description window, which displays, and in some cases, allows changing the attributes of these objects. The Display Row Locks feature allows the user to see all row locks currently being held on a table.

#### **IBM @server xSeries Administration**

The xSeries can now be managed through the Operations Navigator. You can start, stop, and display the status and properties of the server, which is installed with Windows™ 2000.

The Client Access Express for Windows client, with the Operations Navigator function above, ships with OS/400 and can be downloaded from the OS/400 NetServer to PC Windows desktops.

For more information - [ibm.com/servers/eserver/series/oper\\_nav](http://ibm.com/servers/eserver/series/oper_nav)

visit

[ibm.com/shop/series](http://ibm.com/shop/series)

call 800 426-2255

*Flex your application options***Operating System/400 V5R1****Built on the robust, stable OS/400 base, V5R1 delivers impressive enhancements**

■ **LINUX – New, scalable, and reliable, Linux support enables a new stream of e-business applications that complement the strengths of the iSeries as an integrated core business solution**

■ **LOGICAL PARTITIONING (LPAR) – Shared processors, dynamic resource movement**

■ **WINDOWS SERVER INTEGRATION**  
– iSeries as **SAN (Storage Area Network) for Windows Servers**  
– **Scalable with direct attach xSeries**

■ **SIGNIFICANTLY ADVANCED USER INTERFACE**  
– **Single and multiple systems; local and remote**

■ **WIRELESS CAPABILITIES BUILT-IN**  
– **XML enablers and extensions to database**

■ **HSL CLUSTERING – Lower cost and easier high availability**

■ **OS/400 PASE – 64-bit support for UNIX applications**

■ **EXTENSIVE ENHANCEMENTS TO E-BUSINESS TOOLS**  
– **Security, TCP/IP, Database, Java, Directory Services, Internet Printing, and ESP.**

OS/400 V5R1 provides the industry's foremost application flexibility with support for Linux, iSeries, Windows.2000, Java and Unix applications, combining high availability with superior workload management and logical partitioning.

With OS/400 V5R1, a business can simply and rapidly deploy e-business applications with seamless integration of existing applications and data. With extensions to its security and networking options, OS/400 V5R1 enables B2B connectivity through the supply chain and to customers.

The face of OS/400 is forever changed with extensive graphical interface enhancements providing visualization, wizards and integration for simplicity of advanced operations from both PCs and pervasive or mobile devices. Operating your server has never been this simple.

OS/400 V5R1 and iSeries provides reliability and scalability for the growing open source Linux environment. Now the next generation of web-enabled Linux applications can be quickly deployed and managed in a single, partitioned server alongside current business applications.

With dynamic and granular Logical Partitioning, OS/400 V5R1 makes it easier than ever to run multiple applications in a single server. Also, iSeries can now provide a storage area network for directly attached Windows 2000 Servers.

New high availability options include faster, less expensive system-to-system clustering options and the ability to switch applications, data, and resources between two iSeries servers.

In addition, V5R1 includes a broad range of enhancements for e-business and application enablement, security, networking, directory services, database, Java, OS/400 PASE, internet printing and many more.

**OS/400  
V5R1:**

**See The Largest OS/400 Release Ever at the IBM @server iSeries Technical Conference!**  
[ibm.com/training/iseries](http://ibm.com/training/iseries)

**visit****[ibm.com/shop/iseries](http://ibm.com/shop/iseries)****call 800 426-2255**

## Flex your application options

### Operating System/400 V5R1



OS/400 V5R1 provides the industry's foremost application flexibility with support for Linux, iSeries, Windows 2000, Java and Unix applications, combining high availability with superior workload management and logical partitioning.

#### Linux for iSeries

iSeries has been enhanced to support Linux running in a secondary logical partition. The primary partition must run OS/400 V5R1 and can support up to 31 Linux partitions depending on the iSeries model.

For additional information about Linux, refer to the following Web pages: <http://www.iseries.ibm.com/linux>

#### Logical Partitioning (LPAR)

LPAR allows for the simultaneous running of multiple independent systems - each with processor, memory, and disk resources - within an iSeries.

#### Windows Server Integration Enhancements

iSeries is enhanced with additional Windows server integration facilities. These enhancements enable iSeries to support larger and more complex Windows applications and offer additional tools to help reduce the cost of managing windows server environments.

Enhancements for the Integrated xSeries Server includes support for up to 32 servers on selected iSeries models, support for the 1GB Ethernet LAN adapter, and support for the iSeries DVD device.

#### Advanced User Interface

V5R1 delivers double the advanced GUI function when compared with V4R5. Operations Navigator is significantly expanded with industry-leading integrated systems management via easy-to-use graphical interface.

#### Management Central-Pervasive

Management Central-Pervasive allows administrators to keep an eye on their iSeries or AS/400 servers while away from their workstation using an Internet capable cellular phone, PDA with a wireless modem, or a Web browser.

**Information Center For iSeries** is the starting point for finding iSeries technical information and is available on a CD-ROM shipped with OS/400. It is also on the Internet at: [ibm.com/eserver/series/infocenter](http://ibm.com/eserver/series/infocenter)

#### XML Enablers

IBM and iSeries support of XML, one of the key technologies fueling the growth of e-business and mobile e-business solutions, is demonstrated by the suite of XML application enablers delivered with OS/400 in V5R1, providing a core of XML services for applications to build on.

#### OS/400 Cluster Resource Services

New capabilities include:

- Independent Auxiliary Storage Pools (IASPs)
- IBM Cluster Management Utility
- HSL OptiConnect

#### HA Switchable Resources

HA Switchable Resources, a new chargeable option of OS/400, gives you the capability to achieve a highly available environment using switchable resources.

#### 2.7.8 OS/400 PASE

OS/400 PASE is an integrated component of OS/400 that provides a subset of AIX Version 4.3.3 functionality to support running UNIX\* applications.

\* UNIX is a registered trademark of The Open Group.

Additional Enhancements in OS/400 V5R1 include:

- **HTTP Server for iSeries** - improved performance and availability and enhanced search capabilities
- **Security** - enhanced system integrity with digital signature and object signing
- **TCP/IP**
- New Dynamic Domain Name Server
- iSeries now supports Network Quality of Service
- **Java**
- Functional and performance enhancements for Toolbox for Java
- Developer Kit for Java supports three major versions of Java
- **Internet Printing**
- Internet Printing Protocol support
- PSF/400 enhancements
- Unicode (TICS-2) print capabilities

For more information - [ibm.com/eserver/series](http://ibm.com/eserver/series)

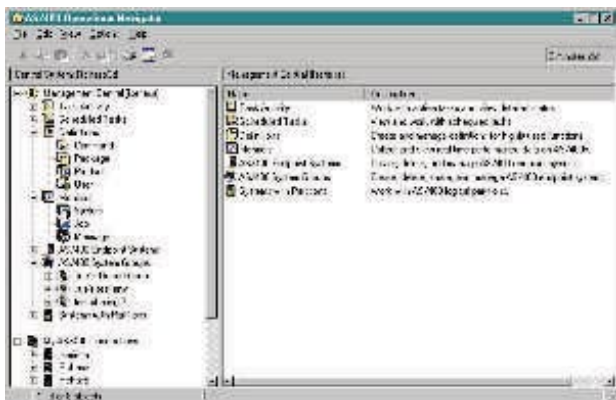
visit

[ibm.com/shop/series](http://ibm.com/shop/series)

call 800 426-2255

## Manage your iSeries from anywhere, anytime

### Management Central-Pervasive

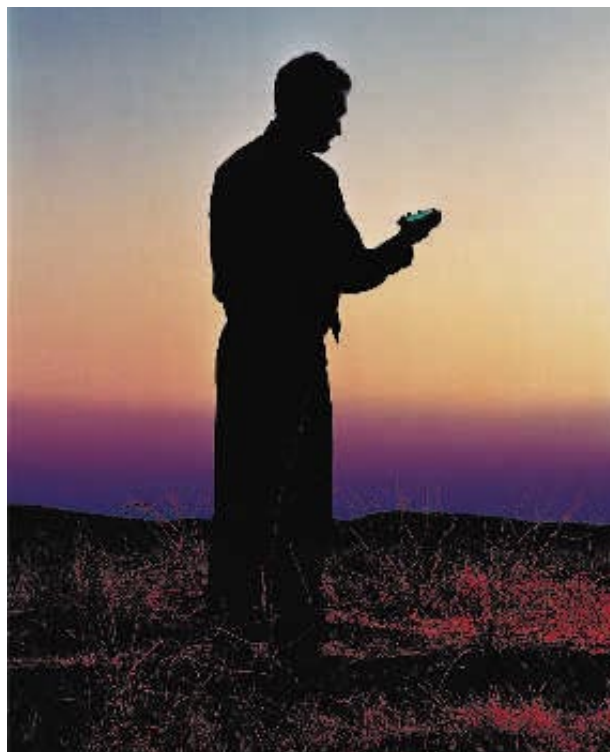


#### V5R1 enhancements for MC-Pervasive include:

- **Additional support for system performance monitoring**
- **Monitor specific jobs and servers on multiple systems**
- **Monitor message queues on multiple systems**
- **Executing hold, release or end a job on any endpoint system**
- **Run commands on any group of systems.**

Management Central-Pervasive (MC-Pervasive) allows iSeries network administrators to keep an eye on their iSeries or AS/400 servers while they are away from their workstation or office. Using an Internet capable cellular phone, PDA with a wireless modem, or a Web browser, administrators can monitor and manage their iSeries systems.

Network administrators now have more flexibility to access Management Central information and monitor the iSeries and AS/400 servers they support. Management Central-Pervasive lets you remotely monitor system performance



and status using a Web phone, a PDA with a wireless modem, or a Web browser on a PC or Network Station™.

After you set up a Web server on one of your systems to host Management Central information, you simply enter the Web site into your Web phone, PDA, or browser to check the availability of your iSeries or AS/400 server. For example, you can check the availability of your systems to find out if a reboot completed or check if the system exceeded any thresholds for CPU or disk utilization during overnight job runs.

For more information - [ibm.com/servers/eserver/series/software](http://ibm.com/servers/eserver/series/software)

visit

[ibm.com/shop/series](http://ibm.com/shop/series)

call 800 426-2255



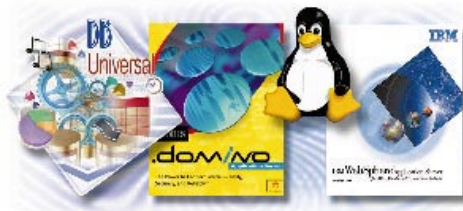
## Linux: A powerful platform for e-business

*Linux, the world's fastest growing operating system, is rapidly becoming a preferred platform for more and more companies. Is it the platform for you? To help you make that decision, IBM has created the industry's broadest portfolio of Linux-based offerings, providing the hardware, software, and services to help you build the infrastructure necessary to run your e-business.*

*From DB2 and WebSphere to Lotus and Tivoli, IBM's commitment to provide comprehensive support for Linux allows you to make sound business decisions based on solid IBM advantages.*

### Enterprise capability at a small business price

#### IBM Small Business Suite for Linux



- **Affordably priced**
- **Helps build a reliable, scalable foundation**
- **Provides the three most requested server functions**
  - **Lotus domino Application Server**
  - **WebSphere application Server**
  - **DB2 Universal Database.**

IBM Small Business Suite for Linux delivers an integrated, full-featured web solution designed for small businesses seeking to put their business on the Web.

The IBM Small Business Suite for Linux features the software every small business needs to start small and grow fast on

the web – Lotus Domino, DB2 Universal Database, WebSphere Application Server – plus comprehensive Web site design and integration tools.

Designed for small and medium businesses, the IBM Small Business Suite for Linux provides a complete, enterprise-grade software base for business solutions – robust, secure and scalable – and an installation, configuration and deployment tool that helps deliver a successful, productive 'out-of-box' installation and application integration experience.

The IBM Small Business Suite for Linux provides the foundation for taking your business to the web, backed by a name you can trust.

For more information - [ibm.com/software/is/mp/linux/sbs/](http://ibm.com/software/is/mp/linux/sbs/)

Product No.	Description	Price \$
11K5784	IBM Small Business Suite for Linux V1.6 Program Package (1 Server)	*

\* Call for latest prices.

**visit** [ibm.com/shop/iseries](http://ibm.com/shop/iseries) **call 800 426-2255**

## High value applications that connect people and enterprises

### Domino for the iSeries and AS/400 R5 Server Family



#### Domino integrates your company's messaging and Web application software

- **Fosters successful collaboration both internally and externally**
- **Sets a new standard for rich Internet messaging, ease of administration, integration with back-end systems and reliability**
- **Offers outstanding mobile capabilities for everything from Lotus Notes clients and Web browsers to PDAs**
- **Provides an open, more secure platform to deliver collaborative Web applications that integrate enterprise systems with processes**
- **Lets you move beyond static Web sites to create high-value business solutions - workflow, content management, e-commerce, CRM, etc. - and connect them to your back-end systems.**

The Domino R5 family features an open, unified architecture and sets new standards for reliability, Internet messaging and administrative ease. When coupled with an AS/400e or iSeries 400 server, Domino for AS/400 R5 offers a solution unmatched in the value it can deliver for your business.

#### Domino for iSeries and AS/400 has two outstanding server implementations:

- **Domino on standard models for mixed workloads (Domino and other applications) or tight integration between Domino and DB2 data.**
- **The iSeries 400 Dedicated Server for Domino when you want a powerful, reliable server just for Domino.**

As an option (especially valuable for existing AS/400 customers) you may purchase the Domino Mail Application, Enterprise, and Advanced Enterprise Server for AS/400 R5 as an AS/400 licensed program (LP). The AS/400 licensed program includes options for purchasing Notes clients, Domino Designer, iNotes and iNotes Per Server CAL (client access license) for external users (not employees or contractors) authenticating to your server from a browser. You also have the option to include the server component of the Domino Enterprise Server for AS/400 licensed program, as part of your OS/400 software subscription, to provide Maintenance Releases (MRs) every four months and New Releases for your server.

Domino Enterprise Server for AS/400 R5 includes all the functions of the Domino Mail Server and the Domino Application Server plus the partitioning and clustering capabilities that give iSeries or AS/400e its power as a mixed workload Domino server.

Alternatively, you have the option to purchase the Domino Mail Server or the Domino Application Server through the QuickShip program (as part of the Lotus passport channel). With this method, you can purchase a Lotus subscription agreement instead of AS/400 software subscription for your server license.

<b>AS/400 Requirements:</b>	AS/400 or iSeries with OS/400 V4R5 or later.
-----------------------------	--

For more information - <a href="http://ibm.com/eserver/series/domino">ibm.com/eserver/series/domino</a>
---

#### Domino for AS/400 R5 Servers

Product No.	Feature	Description	Price \$
5769-LNT	2010	Domino R5 Mail Server <sup>1</sup>	*
5769-LNT	2008	Domino R5 Application Server <sup>1</sup>	*
5769-LNT	2011	Domino R5 Enterprise Server <sup>1*</sup>	*
5769-LNT	2000	Domino R5 Advanced Enterprise Server	*
5769-LNT	1905	iNotes Domino R5 Per Server CAL (Client Access License)	*
5769-LNT	2004	iNotes Client	*
5769-LNT	1903	Lotus Notes R5 Collaboration Client (includes subscription)	*

<sup>1</sup> Call for Upgrade Pricing

Lotus Notes Designer Client is required to write Notes/Domino applications.

Call for Lotus Domino for AS/400 multi-processor assistance.

Lotus Notes Clients should be purchased with R5 Server Software.

\* Call for other configurations and pricing.

▶ 24 Hour QuickShip. Most items above are available through QuickShip; however, QuickShip items are not available for Software Subscription.

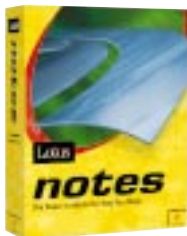
visit

[ibm.com/shop/series](http://ibm.com/shop/series)

call 800 426-2255

## Integrated Internet messaging & collaboration client software

### Lotus Notes R5



■ **The leading integrated software for the Internet and the one strategic messaging and collaborating client delivered by Lotus**

■ **Finds, manages and sorts your work in a way that makes sense to you**

■ **Builds on the most popular features of Lotus products including previous releases of Notes, cc:Mail, and Organizer**

■ **State-of-the-art e-mail, calendaring, group scheduling, Web browsing and information management - all using the same customizable user interface.**

Now you can manage all of your Internet communications in one place, with a single package: the new Lotus Notes R5. It brings all of your e-mail together, whether from your network or an Internet account. Plus you can use it to customize your new Welcome page, synchronize with PCs, pagers, faxes, PDAs and much more.

Notes is available as a client feature of the Domino Server for iSeries program. Or, if you prefer, you can purchase Notes through the QuickShip program as part of the Lotus passport channel and include it with your Lotus maintenance agreement.

<b>Requirements:</b>	Call for hardware and software requirements.
<b>Media:</b>	CD-ROM

For more information - [www.lotus.com/notes](http://www.lotus.com/notes)

Product No.	Feature	Description	Price \$
▶ 5769-LNT	1903	Lotus Notes R5 Collaboration	***†

† includes subscription  
 \* A minimum of one client must be ordered with 5769-LNT Features 1881 - 1885.  
 ▶ 24 Hour QuickShip  
 \*\* Call for latest prices.

## Standardization and flexibility!

### Lotus iNotes



■ **Web browser access to Domino - work with Domino Web-based e-mail, calendar, personal contacts and e-business applications, both on- and off-line**

■ **Microsoft Outlook access to Domino - bring reliable, scalable Domino Messaging to Microsoft Outlook 98/2000 users.**

iNotes delivers the powerful messaging, e-business applications and mobility of the Domino server to Web browsers and extends Domino's scalable, reliable messaging capabilities to Microsoft Outlook users. iNotes client also includes off-line support for better mobility and a simple deployment model with a no-touch install.

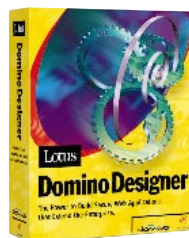
For more information - [www.lotus.com/inotes](http://www.lotus.com/inotes)

Product No.	Feature	Description	Price \$
5769-LNT	2004	Lotus iNotes Client	**†

† includes subscription  
 \* Call for latest prices.

## Rapidly build secure Web applications

### Lotus Domino Designer R5



■ **Contains everything you need to create secure, end-to-end Web solutions**

■ **Connects Web applications to live data in relational databases, ERP applications and Transaction Processing Systems.**

Domino Designer R5 is the fastest, most cost-effective way to create high-value business solutions. This world-class client development environment includes WYSIWYG HTML authoring, site/page and frameset design, and application preview. It gives you the power to "build locally, deploy globally".

For more information - [www.lotus.com/home.nsf/welcome/dominodesigner](http://www.lotus.com/home.nsf/welcome/dominodesigner)

Product No.	Feature	Description	Price \$
▶ 5769-LNT	1906	Lotus Designer Client	*

▶ 24 Hour QuickShip  
 \* Call for latest prices.

**PASSPORT**  
 \*\*\*\*\*  
 Be sure to ask about  
 Passport Advantage  
 Call for information



**Lotus Customers**  
 You can order  
 Domino and  
 iNotes products  
 by calling: 800-343-54 14

*Extend the power of Domino with access to Enterprise data*

**Lotus Enterprise Integrator for AS/400**



**NOW FAX**  
with the recently announced PCI Remote Access Adapter.



- Lets you move your business data into Notes and use it in exciting new ways
- Provides both volume batch data transfer and real-time access
- Lets you move data when you need it (on demand or scheduled) and how you need it, through an easy-to-learn, forms-driven interface.

With Lotus Enterprise Integrator (LEI), you can extend the power of Lotus Notes and Domino by connecting them to your business data. LEI gives you the option to store data in two places (Domino and DB2 UDB) and keep it synchronized. Or, you can keep your data in DB2 UDB and access it - real-time - from Domino applications.

For more information - [ibm.com/servers/eserver/iseres/domino/related/lei.htm](http://ibm.com/servers/eserver/iseres/domino/related/lei.htm)

Product No.	Feature	Description	Price \$
5769-LNP	1908	Lotus Enterprise Integrator <sup>1</sup>	*
5769-LNP	1910	Lotus Enterprise Integrator - additional user <sup>1</sup>	*

<sup>1</sup> Call for other pricing options.  
LEI is available as an OS/400 licensed program. You have the option of including it as part of your OS/400 software subscription. Or, if you prefer, you can purchase LEI through the QuickShip program as part of the Lotus passport channel and include it with your Lotus maintenance agreement.

\* Call for latest prices.

*Now available to extend the power of Domino on your iSeries or AS/400e*

**IBM Integrated Domino Fax for iSeries**



- Send and receive faxes from Notes Desktop as easily as e-mail
- Easily fax rich text, graphics, and attached files
- Automatically delay fax transmission until telephone rates drop
- Easily select cover page and cost codes
- Runs on your existing Domino for AS/400 mail server (only requires an NT workstation for fax conversions)
- Supports iSeries or AS/400 fax hardware
- Also supports Web browsers, POP3 clients, and OfficeVision users.

**Faxing becomes just another delivery option**

IBM Integrated Domino Fax for iSeries makes sending a fax as easy as sending an e-mail. And it makes it easy to offer fax as a delivery option.

With other fax solutions you need a separate server to run the fax. Not only does that increase costs, it gives you one more piece of hardware to manage! With Domino Fax you can run your fax server on the same iSeries or AS/400 server that handles your mail.

Lotus Notes users can send and receive faxes directly from their Notes client. Using your current telephone system and Domino infrastructure, IBM Integrated Domino Fax for iSeries makes faxing a more convenient, more reliable and less costly option.

Product No.	Description	Price \$
5733-FXD	IBM Integrated Domino Fax for iSeries	*

\* Call for latest prices.

**visit [ibm.com/shop/iseres](http://ibm.com/shop/iseres) call 800 426-2255**

## Real-time collaboration that's fit for e-business

### Lotus Sametime



- **Collaborate securely in real-time over the Web**
- **Instant message, share your screen, and whiteboard ideas with your colleagues through a Web browser**
- **Easily add instant messaging or application sharing to your Web site to improve customer service and create efficiencies with your extended team.**

As the leader in real-time collaboration for e-business, Sametime can make working with your extended team easier than ever before. Sametime goes beyond secure instant messaging, including using the Web to improve customer service, reduce travel costs, and create communities among your employees, customers, partners, and suppliers.

<b>AS/400 Requirements:</b>	iSeries or AS/400 with OS/400 V4R5 or later
-----------------------------	---

For more information - [www.lotus.com/sametime](http://www.lotus.com/sametime)

Product No.	Description	Price \$
D5CT2LL	Sametime Per User LIC/SW MAINT 1ANNIV	*

Price shown reflects Passport Advantage savings on licenses, maintenance and support. Additional discounts and tradeup options may apply.

\* Call for latest prices.

## Instant team workspaces for the global enterprise

### Lotus QuickPlace

#### Features include:

- **Task Management – including Gantt chart view summary**
- **Office 2000 integration**
- **Instant Chat**
- **Shared team calendar**
- **Customized themes and templates for specific business processes**
- **Ability to work offline**
- **Available on 5 platforms and 14 languages.**

Lotus QuickPlace is a self-service tool for Web-based team collaboration. Teams use QuickPlace to centrally share and organize ideas, content, and tasks around any project or ad-hoc initiative. QuickPlace improves (both internal and external) team communication/collaboration process and efficiency, time to response and action, navigation of information, and the ability of team members to participate in the planning, creation, and sharing of content and deliverables.

<b>AS/400 Requirements:</b>	iSeries or AS/400 with OS/400 V4R5 or later
-----------------------------	---

For more information - [lotus.com/quickplace](http://lotus.com/quickplace)

Product No.	Description	Price \$
AD7LXIE	Lotus QuickPlace Release 2 (per user)	*

Upgrade pricing is available. Call for Passport Advantage savings on licenses and maintenance.

\* Call for latest prices.

visit

[ibm.com/shop/iseries](http://ibm.com/shop/iseries)

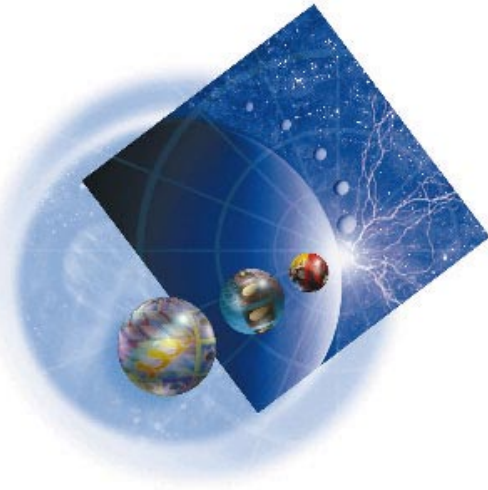
call 800 426-2255

## Build and operate high-powered, e-business Web sites

### IBM WebSphere Application Server for iSeries



**New!**  
**WebSphere**  
**Host**  
**Publisher**  
Application for  
iSeries  
Development  
Workshop and  
other e-business  
training at:  
[ibm.com/training/series](http://ibm.com/training/series)



■ **WebSphere Application Server forms the foundation of the entire application server family. This gives you an open, standards-based Web server deployment platform and a Web site development and management toolkit to help accelerate your move to e-business**

■ **WebSphere Development Studio provides a complete set of tools covering Web project organization, Java Servlet code generation wizards, HTML authoring, script development, and Java code development for applications deployed on WebSphere Application Server (see pages 56-58).**

#### Turn your Web site into a high-powered e-business tool

WebSphere products help you transition from simple Web publishing to advanced e-business Web applications by building and managing high-performance Web sites. The WebSphere Software suite includes WebSphere Application Server Standard Edition and WebSphere Development Studio.

WebSphere Application Server can support transactional Java™ based business applications, from simple Web publishing through enterprise-scale transaction processing.

The WebSphere Software Suite includes WebSphere Application Server and WebSphere Studio.

By adding WebSphere Application Server software to other application servers like Lotus Domino, CICS/390, IMS\*, OS/390\* and OS/400, you can span existing platforms and applications from Windows NT through S/390.

Together with Java, WebSphere Application Server turns the integrated HTTP Server into an ideal platform for serving Java server pages (JSPs) that leverage Java Servlets, Enterprise java Beans, or your existing iSeries or AS/400 data and programs. It also provides connectors for common database formats.

WebSphere Application Server provides an open environment that supports industry standards like XML and JDBC to help you reduce the cost of developing e-business server applications. With OS/400 V5R1, WebSphere Application Server Standard Edition is offered as a no additional charge option (5769-AS1).

IBM WebSphere Application Server, Advanced Edition builds on the Standard Edition and provides:

- Performance and scaling improvements in deploying Enterprise Java beans, servlets and JSP components
- Enhanced support distributed transactions, EJB component management, and transaction persistence
- Improved deployment manager interface and application execution services
- Additional protocol and application adapter interface support
- Improved security controls and management
- Comprehensive site usage logging and analysis tools

<b>Workstation Requirements:</b>	Call for requirements for WebSphere Studio
----------------------------------	--

For more information - [ibm.com/software/websphere](http://ibm.com/software/websphere)

#### WebSphere Application Server for iSeries

Product No.	Description	Price \$
	WebSphere Application Server for iSeries (part of OS/400 V5R1)	N/C
5733-WA3	WebSphere Application Server, Advanced Edition (FC 1001)	*

\* Call for latest prices.

*e-commerce solutions that grow with your business***IBM WebSphere Commerce Suite Version 5.1, Pro Edition for iSeries**

- **Provides an easy-to-install, integrated solution with out-of-the-box functionality**
- **Offers a total commerce flow that includes purchasing, fulfillment, payment and settlement**
- **Builds on a reliable, secure, scalable foundation that ensures around-the-clock availability**
- **Leverages Java technology to deliver a flexible, portable and easy-to-maintain solution**
- **Includes easy-to-use tools to empower your line of business users**
- **Helps you create sites tailored to meet the culturally diverse needs of an international customer base**
- **Enables anytime, anywhere access through support for m-commerce.**

**IBM WebSphere Commerce Suite V5.1 for iSeries**

Customers expect fast, reliable, secure service from your e-commerce site. But catalogs and shopping carts aren't enough to attract and retain customers who demand a more valuable purchasing experience – one that reflects their individual needs and keeps pace with today's global marketplace. IBM WebSphere Commerce Suite provides everything you need to deliver a total e-commerce solution to your customers, suppliers and trading partners, a solution that reflects the needs of any size business, in any industry.

**Fast, flexible and fearless**

WebSphere Commerce Suite is an out-of-the-box, integrated solution that works for companies of all sizes. Whether you are developing a single-tier "Mom and Pop" shop or the \$14.9 billion ShopIBM Web site, WebSphere Commerce Suite gives you the tools to get your site up and running – fast. You get the flexibility to effectively manage your site – and the assurance that you're building on a solid, proven foundation to keep your site going around the clock. WebSphere commerce Suite includes server software to host e-commerce sites and robust payment software to handle secure Internet payments. Add to that IBM's business expertise and a fearless commitment to the advancement of e-commerce technology, and you have a complete e-commerce solution.

<b>Hardware Requirements:</b>	Minimally, an iSeries or AS/400 system with a C/S CPW rating of 420 or more with 1GB of memory.
<b>Software Requirements:</b>	OS/400 V4R5 or later; WAS Advanced Edition 3.5, Digital Certificate Manager; Qshell Interpreter; Toolbox for Java; Java Developer Kit 1.2.2; HTTP server, TCP/IP Connectivity Utilities; and a Crypto Access Provider product

For more information - [ibm.com/software/webservers/commerce](http://ibm.com/software/webservers/commerce)

Product No.	Feature	Description	Price \$
5724-A18	0039	WebSphere Commerce Suite, per processor charge	*
5724-A18	0038	charge per store	*

\* Call for latest prices.

visit

[ibm.com/shop/series](http://ibm.com/shop/series)

call 800 426-2255

## B2B: driving the Internet economy

### Connect for iSeries



- **Enhanced flow processing**
- **Visual mapping tools**
- **Improved catalog management capabilities**
- **Support for the latest middleware from IBM.**

Connect for iSeries provides the key enablement needed for a business to extend its processes and products to other businesses.

#### Connect for iSeries COMPONENTS

**PLUG-N-CONNECT:** Easy integration between e-marketplaces like Ariba and Metiom and your office data

and/or applications. iSeries Connect has opened up interfaces to allow business partners the ability to create their own protocols to support point to point and private exchanges.

Today's procurement solutions allow buyers to purchase from a local electronic catalog. Connect for iSeries allows a supplier to publish catalog information easily from a variety of sources including IFS files, DB2 UDB databases, and applications.

**TOOLS:** Intuitive tools and wizards enable you to easily install and configure the components and map e-market requests to your production ERP solution.

**MQSERIES:** An integrated version of MQSeries messaging is licensed for use with B2B solutions. MQSeries messaging provides the robust, reliable inter-application communication needed for critical processes.

For more information - [ibm.com/eserver/iseries/btob](http://ibm.com/eserver/iseries/btob)

Product No.	Description	Price \$
5733-B2B	Connect for iSeries	*

\* Now available; call for price information

\* Call for latest prices.

## Optimize the wireless Web experience

### WebSphere Transcoding Publisher



- **Extend Web content to new environments**
- **Streamline the delivery of content**
- **Customize the presentation for the end-user.**

WebSphere Transcoding Publisher is server-based software solution that dynamically adapts Web content and applications and optimizes it for delivery to mobile devices, such as mobile phones and handheld computers. This server-side solution bridges data across various formats, markup languages, device types, and networks, allowing companies to reach their mobile customers, business partners, and employees on a variety of devices. It allows organizations to communicate with their mobile customers and employees through the Web applications they have already created.

<b>Requirements:</b>	Call for hardware and software requirements.
<b>Media:</b>	CD-ROM

For more information - [ibm.com/websphere/transcoding](http://ibm.com/websphere/transcoding)

Product No.	Description	Price \$
20P4507	IBM WebSphere Transcoding Publisher V3.5 Program Pack Eng (wk)	*

\* **NOTE:** Pricing is per-processor based, regardless of platform.

Call for upgrade pricing and Passport Advantage pricing.

\* Call for latest prices.

visit

[ibm.com/shop/iseries](http://ibm.com/shop/iseries)

call 800 426-2255



*e-content for e-business***IBM Content Management and Enterprise Information Portal**

- Gives you greater control over your documents and the information in them
- Expands your business opportunities
- Increases productivity while lowering operating costs
- Simultaneously access documents created, managed and stored on other systems
- Works across a variety of platforms and technologies
- Allows you to access your document archives under your current Web browser
- Creates a workforce that's more efficient, more productive and more competitive
- Works seamlessly with your other business applications helping to preserve your existing investment.

The most vital asset in your company today is your data - in your applications, your databases, and in your documents! IBM Content Manager gives you more ways than ever to put the power of the iSeries and AS/400 to work for you - managing the documents you receive, create and distribute.

**IBM Content Manager** eliminates the time-consuming and cumbersome routine of document filing and retrieval with just a few keystrokes. With Content Manager, vast numbers of documents are scanned, indexed and stored, allowing for quick and easy retrieval of document images when you need them most. Powerful workflow management capabilities ensure that the right work gets to the right person at the right time.

**IBM Content Manager OnDemand** provides high-performance online document capture, storage, and retrieval of computer output. Find specific information instantly and browse easily without having to go through enormous amounts of data or reams of paper. OnDemand could make paper and microfiche archives obsolete.

**IBM Enterprise Information Portal** lets business users personalize data queries, search extensively for very specific needs, and utilize relevant results - from across an unrivaled number of IBM and non-IBM data sources, both traditional and multimedia.

**IBM MQSeries Workflow** and **Lotus Domino.Doc** complete the suite with solutions for complex enterprise work management and document content management for a collaborative environment.

**Fast, easy, limitless**

With IBM Content Manager and Enterprise Information Portal, a single query search is all your users need to access multiple data sources. After the search, the resulting information is unified in one simple presentation. Customer statements. Spreadsheets. Analyses. Reports. Contracts. Letters. Invoices. Proposals. You name it. It's all indexed, stored and ready for use.

**An eye toward success**

Thanks to IBM software, every person in every department can enjoy reliable, immediate access to a wealth of digital documents. The result: A workforce that's more efficient, more productive and more competitive.

<b>AS/400 Requirements:</b>	OS/400 V5R1
-----------------------------	-------------

For more information - <a href="http://ibm.com/software/data/cm">ibm.com/software/data/cm</a>
---

Product No.	Description	Price \$
5722-RD1	Content Manager OnDemand for iSeries	* †
5722-V11	Content Manager for iSeries	* †

† User pricing applies to all Content Manager products. Content Manager continues to enhance the capabilities previously offered through IBM EDMSuite. Please call for additional details and configuration assistance.

\* Call for latest prices.

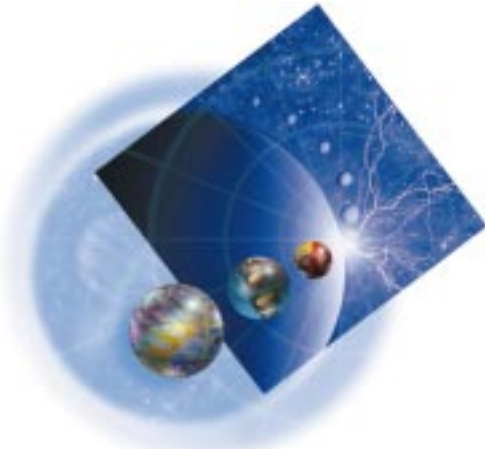
visit

[ibm.com/shop/series](http://ibm.com/shop/series)

call 800 426-2255

*All the key iSeries e-business development tools at one attractive price*

**IBM WebSphere Development Studio for iSeries**



**WebSphere Development Studio for iSeries consolidates the key e-business development tools into an attractively priced package. It allows solution providers and customers to rapidly, easily, and cost-effectively increase the number of Web-enabled, e-business applications for the iSeries server.**

■ **Host Components:**

- ILE RPG (RPG IV)
- ILE COBOL
- ILE C
- ILE C++
- Application Development ToolSet

■ **Workstation Components**

- WebFacing Tool (First Edition)
- WebSphere Studio for iSeries (Professional Edition)
- VisualAge for Java for iSeries (Professional Edition)
- CoOperative Development Environment (CODE)
- VisualAge RPG

WebSphere™ Development Studio for iSeries gives customers and solution providers rapid and cost-effective ways to increase the number of Web-enabled, e-business applications for the iSeries server. The introduction of Development Studio marks a major shift in the packaging of IBM application development tools for the iSeries server. Rather than continuing to sell individual tools and compilers, this package consolidates all the key iSeries development tools, both host and workstation, traditional and new, into one attractively priced iSeries offering.

**WebSphere Development Studio for iSeries Components**

**Host Component Changes**

- ILE RPG (RPG IV) – Improved
- Java™ – interoperability and free-form C-Specs
- ILE COBOL – zSeries migration capabilities and Java interoperability capability
- New ILE C compiler
- New ILE C++ compiler
- Application Development ToolSet

**Workstation Component Changes**

- For the description of Workstation Components, see next page.

WebSphere Development Studio for iSeries includes many of the host tools and unlimited workstation licenses of the workstation tools. The benefit varies with the usage of the workstation tools.

WebSphere Development Studio for iSeries is significantly discounted off the sum of the component prices. With software subscription, WebSphere Development Studio for iSeries is a no-additional-charge upgrade from the standard iSeries application development tools.

You also receive the workstation-based development tools, WebSphere Development Tools for iSeries, with unlimited workstation licenses when you purchase the WebSphere Development Studio for iSeries host components.

For more information - [ibm.com/software/ad/wds400](http://ibm.com/software/ad/wds400)

Product No.	Description	P05	P10	P20	P30	P40	P50
		<b>Price \$</b>					
5722-WDS (V5R1)	WebSphere Development Studio	*	*	*	*	*	*
	Development Manager	*	*	*	*	*	*
	Dictionary Services	*	*	*	*	*	*
5769-WDS (V4R5)	WebSphere Development Studio	*	*	*	*	*	*
	Development Manager	*	*	*	*	*	*
	Dictionary Services	*	*	*	*	*	*

\* Call for latest prices.

*All the key iSeries e-business workstation development tools at one low price*

## IBM WebSphere Development Tools for iSeries



**WebSphere Development Tools for AS/400 V4R5.1, introduced in October 2000, consolidated the key workstation application development tools into an iSeries program. WebSphere Development Tools for iSeries V5.1, available now for consultants, analysts, and independent software vendors, contains the following workstation tools:**

■ **WebFacing Tool (First Edition)**

■ **WebSphere Studio for iSeries (Professional Edition)**

■ **VisualAge for Java for iSeries (Professional Edition)**

■ **CoOperative Development Environment (CODE)**

■ **VisualAge RPG.**

WebSphere Development Tools for iSeries V5.1<sup>1</sup> is now available for consultants, analysts and independent software vendors through new channels, including additional IBM Business Partners, retail channels, and the IBM Passport Advantage program. They no longer need an iSeries or AS/400® server to order these workstation tools.

This program gives customers and solution providers rapid and cost-effective ways to increase the number of Web-enabled, e-business applications for the iSeries server.

WebSphere Development Tools for iSeries Components:

**WebFacing Tool (First Edition):**

- Helps build a Web interface to existing 5250 applications: Helps convert at development time the display file source onto JavaServer pages (JSPs) and Java® data beans
- Deploys JSPs and beans to the WebSphere Application Server (WAS)
- Requires little change to the application's business logic
- Easy and cost-effective to convert – no separate tool costs or run time charges

**WebSphere Studio for iSeries (Professional Edition):**

- Provides easy access to iSeries data and applications
- Contains Web palette parts to generate standard HTML and Java Script:
- Includes entry field with validity checking and edit code support
- Includes subfile parts
- Includes a wizard to generate a functional Web user interface

**VisualAge® for Java for iSeries (Professional Edition):**

- Provides easy access to iSeries system functions
- Generates code to access data and applications

**CoOperative Development Environment (CODE):**

- Windows™-based versions of the classic host tools SEU, SDA, RLU, PDM, and the system debugger
- Provides seamless access to iSeries source and objects
- More efficient development of OPM/ILE RPG, OPM/ILE COBOL, OPM/ILE CL, ILE C, ILE C++, database description specifications (DDS), and Java
- Helps attract, retain, and grow key iSeries development skills

**VisualAge RPG**

- Creates GUI applications for Windows or any Java, GUI-capable client or browser
- Provides seamless access to iSeries data and applications

Here's a summary of the reactions of key iSeries analysts:

"The most significant change in AS/400 AD ever!" – Al Barsa, Barsa Consulting

"A new era of AD for the iSeries community." – Salim Kanji, CEO Logisil

On WebFacing, 5250 to Web GUI – NO SWEAT" – Garry Reinhard, APPCON Pres.

"I'm betting my company's future on WebFacing." – PATHIX

<sup>1</sup> This program contains workstation tools only. If customers and solution providers are also interested in the host components, they should consider WebSphere Development Studio for iSeries (5769-WDS or 5722-WDS).

For more information - [ibm.com/software/ad/wds400](http://ibm.com/software/ad/wds400)

Product No.	Description	Price \$
20P4567	WebSphere Development Tools for iSeries, Program Package	*
20P4568	WebSphere Development Tools for iSeries, Authorized User	*

\* Call for latest prices.

visit

[ibm.com/shop/iseries](http://ibm.com/shop/iseries)

call 800 426-2255

## The open standard for messaging services

### MQSeries for iSeries



- **Business-quality messaging and assured delivery**
- **Integrate business applications across desktop and mainframe systems**
- **Overcome inconsistencies with different network protocols and major commercial platforms.**

MQSeries is business-quality messaging. Now your applications can integrate and communicate across desktops and mainframes, overcoming inconsistencies in network protocols and commercial platforms. MQSeries offers:

- A single multiplatform API
- Time-independent processing
- Robust middleware for high-performance distributed application integration

<b>Requirements:</b>	OS/400 V4R4 or later (OS/400 V4R2 for users of 5769-MQ2.)
<b>Media:</b>	CD-ROM

For more information - [ibm.com/software/ts/mqseries](http://ibm.com/software/ts/mqseries)

Product No.	Feature	Description	Price \$
5733-A38		MQSeries for iSeries, V5.2	
5733-A38	2442	Program Pack P05 (2 Cap. Units)	*
5733-A38	2443	Capacity Unit	*
5733-A38		P10 and P20 (4 Cap. Units)	*
5733-A38		P30 and P40 (8 Cap. Units)	*
5733-A38		Group P50 (16 Cap. Units)	*

<sup>†</sup> Check the MQSeries Web site for the availability of new releases.  
<sup>††</sup> MQSeries for AS/400 program package includes 2 capacity units.  
 \* Call for latest prices.

## Extend your DB2 database for e-business

### DB2 Extenders for iSeries, Version 7.1



- **Integrate XML and Text with your database**
- **Compose and decompose XML documents**
- **Store and access XML documents with SQL**
- **Full text search in whole or structured documents including XML.**

**DB2 XML Extender** allows you to store Extensible Markup Language (XML) documents as a new column data type or decompose and store XML as columns in multiple tables. Text search and section search can be enabled on the XML column or its decomposed part via DB2 Text Extender. You can also formulate an XML document from existing DB2 tables.

**DB2 Text Extender** comes with a powerful text search engine that enables sophisticated text search capabilities using SQL, including fuzzy and proximity searches. You can also build your thesaurus for automatically expanding the search terms. For example, a search on "database" could also find "repository" and "DB2".

<b>Requirements:</b>	OS/400 V5R1
<b>Media:</b>	CD-ROM

For more information - [ibm.com/software/data/db2/extenders/xmltext](http://ibm.com/software/data/db2/extenders/xmltext)

Product No: 5722-DE1						
SWG	P05	P10	P20	P30	P40	P50
Price \$	*	*	*	*	*	*

\* Call for latest prices.

## Powerful query & reporting for operational or warehouse data

### IBM QMF for Windows for iSeries

- **Handles enterprise-wide reporting needs**
- **Outstanding performance for end users**
- **Centralized control for administrators**
- **Supports IBM DB2 for iSeries and AS/400 databases and integrates with desktop tools.**

Query Management Facility (QMF) for Windows is a multi-user, multi-purpose, multi-database access query engine. It allows beginners and experts alike to point and click their way to powerful queries, reports, and procedures, even without knowing SQL. Formulate and share business reports, run queries and reports in Web browsers with Java support, and integrate query results with popular Windows tools such as spreadsheets.

To further support your iSeries and AS/400 environments, the QMF Web site offers free object migration tools for IBM Query Manager for AS/400 and IBM Query/400.



<b>Software Requirements:</b>	Windows 9X, Windows 2000, or Windows NT, Supports DB2 for AS/400 V4R3 or later.
-------------------------------	---

For more information - [ibm.com/qmf](http://ibm.com/qmf)

Product No.	Description	Price \$
5697-G24	P05 - P10	*
5697-G24	P20 - P30	*
5697-G24	P40 - P50	*

\* Call for latest prices.

## The platform for business analysis, planning and forecasting

### IBM DB2 OLAP Server for AS/400



- **Supports multiuser read/write for "what if" scenarios like budgeting and forecasting**
- **Provides a builder feature to easily cleanse data and build data warehouse or data marts using full SQL support**
- **Stores data relationally in a DB2 UDB for AS/400 for query and management flexibility or in Essbase for performance.**

DB2 OLAP Server for AS/400, Version 1.1, provides a fast path for your warehouse data into business insight. With IBM's DB2 OLAP server, you can quickly recognize sales hot spots and trends and compare revenue and expense forecasts. It is built for e-business with tools to help you quickly deploy Web-based analytical applications.

This powerful platform also supports all major data warehouses and is easy to integrate into any computing environment. Its leading-edge features include rapid response time in networked environments, large-scale data capacity, multiuser read/write access, flexible data navigation and linked reporting objects.

<b>Hardware Requirements:</b>	AS/400 or iSeries capable of running OS/400 V4R4 or Later Clients: IBM PC or compatible
<b>Software Requirements:</b>	OS/400 V4R4 or Later Clients: Windows 95, 98, NT or Windows 2000
<b>Media:</b>	CD-ROM

For more information - [ibm.com/software/data/db2/db2olap](http://ibm.com/software/data/db2/db2olap)

Product No.	Description	Price \$
20P4078	DB2 OLAP Server for AS/400 V7.1	*
20P4080	User	*

\* Call for latest prices.

visit

[ibm.com/shop/series](http://ibm.com/shop/series)

call 800 426-2255

**DB2  
UDB for  
iSeries**  
Hands-on Labs  
and more  
programming  
classes at:  
[ibm.com/training/  
series](http://ibm.com/training/series)

## Analyze data effectively

### DB2 Intelligent Miner for Data for iSeries V6.1



■ **New enhancements include a graphic visualizer for associations discovery, seamless integration with desktop tools like spreadsheets and SPSS statistics, and up-to-the-minute Web help.**

The IBM DB2 Intelligent Miner for Data for AS/400 is an integrated solution for sophisticated analysis of the data you need to make intelligent and informed decisions. It lets you quickly and easily mine and harvest valuable information from databases, then present that information in a professional format for quicker analysis and better decision making.

<b>Requirements:</b>	OS/400 V4R2 or later (V4R3 for DBCS Support), CD-ROM drive.
----------------------	---

For more information - [ibm.com/software/iminer/fordata](http://ibm.com/software/iminer/fordata)

Product No.	Description	Price \$
5733-IM3	DB2 Intelligent Miner for Data for AS/400 V6R1	*

\* Call for latest prices.

## Build and manage AS/400 data mart or data warehouse

### DB2 Warehouse Manager for iSeries

**Data Warehouse Manager for AS/400 is your foundation for business intelligence and customer relationship management. It includes:**

- **Data Warehouse Center - creates, schedules, and manages data warehouses**
- **Information Catalog Manager - helps end-users find, understand, and access available information**
- **QMF for Windows for AS/400 - a multipurpose query tool**
- **AS/400 Agent - manages the flow of data between the data sources and the target warehouses.**

DB2 Warehouse Manager for AS/400 provides flexible, easy-to-use tools to create and access your data warehouse and to govern and track its usage. In addition, it allows access to multiple data sources including DB2, Oracle, Sybase, Informix, Microsoft SQL Server, flat file, ODBC, and OLE.

To leverage your data effectively DB2 Warehouse Manager for AS/400 can provide faster deployment via common, pre-built warehouse and statistical transformations and enterprise reporting to develop and deliver reports to unlimited clients.

<b>Hardware Requirements:</b>	AS/400 or iSeries capable of running OS/400 V4R4 or later; Clients: IBM PC or compatible
<b>Software Requirements:</b>	OS/400 V4R4 or later; Clients: Windows 95, 98, NT, or 2000
<b>Media:</b>	CD-ROM

For more information - [ibm.com/software/data/db2/warehouse](http://ibm.com/software/data/db2/warehouse)

Product No.	Description	Price \$
20P4323	DB2 Warehouse Manager for iSeries V7.2 Program Package with 1 Processor English	*

\* Call for latest prices.

## Read-only, update anywhere, on-demand replication

### DB2 DataPropagator for iSeries



■ **DB2 DataPropagator for AS/400 consists of the following components:**

- **Administration** - to define and manage replication
- **Capture** - captures changes made to data on replication sources
- **Apply** - reads previously captured, changed data and applies it to target journals or tables.

#### New features include:

- Replicating Large Objects – supports LOB data types
- Only Replicated Changed columns – can save time and space by replicating only changed columns rather than the whole record
- BIGINT Data Type – allows replication of 8-byte integers up to 2,147,483,136 for specialized application needs
- Datalink support – supports datalink data types.

<b>Hardware Requirements:</b>	AS/400 V4R5 or later Clients: IBM PC or compatible
<b>Software Requirements:</b>	AS/400 V4R5 or later Clients: Windows 95, 98, NT or Windows 2000
<b>Media:</b>	CD-ROM

For more information - [ibm.com/software/data/dpropr/](http://ibm.com/software/data/dpropr/)

Product No.	Description	Price \$
5769-DP3	V4R5, Group P05	*
5769-DP3	V4R5, Group P10	*
5769-DP3	V4R5, Group P20	*
5769-DP3	V4R5, Group P30	*
5769-DP3	V4R5, Group P40	*
5769-DP3	V4R5, Group P50	*

\* Call for latest prices.

## Lets users find their own answers

### DB2 Universal Database Query Manager and SQL Development Kit for iSeries

- Comes with precompilers and tools for writing SQL applications in C, C++, RPG, COBOL, PL/I, ILE COBOL for AS/400, and ILE RPG for AS/400
- Provides an application development, interactive query, and report writing environment
- Once created, applications and queries can run on other systems automatically
- Supports standard SQL, including SQL procedures and SQL functions.



Try and Buy



Software Subscription

AS/400 Requirements: OS/400 V4R3 or later.

Product No.	Description	Price \$
5722-ST1	V4R1 or later	
	Group P05	*
	Group P10	*
	Group P20	*
	Group P30	*
	Group P40	*
	Group P50	*

\* Call for latest prices.

visit [ibm.com/shop/iseres](http://ibm.com/shop/iseres) call 800 426-2255

## The magic to help turn mountains of data into bigger profits

### DB2 Universal Database for iSeries



■ **DB2 UDB for iSeries is available for V5R1 and V4R5 users with Software Subscription at no additional charge**

■ **Support for stored procedures written in Java.**

DB2 UDB for iSeries is one of the most widely used databases in the world. It could be just what you need to implement Customer Relationship Management and Business Intelligence solutions throughout your organization.

DB2 UDB for iSeries adds support for large objects, data links and user-defined types and functions to support the most complex CRM and BI applications. Use it to discover valuable new ways to transform the mountains of raw data stored across your systems into truly actionable intelligence – for forecasting, data mining, data warehousing, data marts and customer retention.

If you don't have DB2 Universal Database for iSeries, just call 800-IBM-CALL today and find out how you can obtain this powerful database upgrade.

For more information - [ibm.com/servers/eserver/series/db2](http://ibm.com/servers/eserver/series/db2)

## Handle the how, when and where of job submission

### Job Scheduler for iSeries



■ **Integration with Operations Navigator and Management Central**

■ **Reports on job history, activity logs and changes.**

IBM Job Scheduler for AS/400 is an integrated job scheduling system. By allowing unattended operations, automating operator functions and controlling report distribution, it gives the user control over how, when and where a job is submitted.

Advanced Job Scheduler offers this and more:  
– Powerful calendaring/scheduling features

- Condition-dependent job sequencing
- Multi-system scheduling and tracking
- Paging message transmission.

<b>Requirements:</b>	OS/400 V4R5 or later.
<b>Media:</b>	CD-ROM, 1600 or 6250 bpi tape, ¼-inch, ½-inch or 8mm tape cartridge.

For more information - [ibm.com/servers/eserver/series/jscheduler](http://ibm.com/servers/eserver/series/jscheduler)

### Advanced Job Scheduler for AS/400

Product No.	FC	Description	Price \$
5722-JS1	0196	Advanced Job Scheduler for OS400 V5R1, Group P05	*
5722-JS1	0197	Advanced Job Scheduler for OS400 V5R1, Group P10	*
5722-JS1	0198	Advanced Job Scheduler for OS400 V5R1, Group P20	*
5722-JS1	0199	Advanced Job Scheduler for OS400 V5R1, Group P30	*
5722-JS1	0200	Advanced Job Scheduler for OS400 V5R1, Group P40	*
5722-JS1	0201	Advanced Job Scheduler for OS400 V5R1, Group P50	*
5769-JS1	0730	Advanced Job Scheduler for OS400 V4R5, Group P05	*
5769-JS1	0731	Advanced Job Scheduler for OS400 V4R5, Group P10	*
5769-JS1	0732	Advanced Job Scheduler for OS400 V4R5, Group P20	*
5769-JS1	0733	Advanced Job Scheduler for OS400 V4R5, Group P30	*
5769-JS1	0734	Advanced Job Scheduler for OS400 V4R5, Group P40	*
5769-JS1	1306	Advanced Job Scheduler for OS400 V4R5, Group P50	*

\* Call for latest prices.



## Take control of your applications

### System Manager for iSeries



- **Run remote programs or remotely IPL systems**
- **View all results at a central, iSeries or AS/400 system site**
- **Get a fix to the remote system quickly to avoid downtime.**

System Manager for iSeries distributes applications, fixes, programs and files throughout SNA and TCP/IP networks. You can plan operational activities in advance and schedule them to run in your absence, and be automatically notified when a remote iSeries or AS/400 system has a problem. Monitor for alerts, obtain system information and execute remote iSeries and AS/400 commands from an SNMP platform.

For more information -  
[ibm.com/servers/eserver/series/sftsol/sm.htm](http://ibm.com/servers/eserver/series/sftsol/sm.htm)

### SystemView System Manager for AS/400

Product No.	Description	Price \$
5722-SM1	SystemView System Manager for iSeries	*

\* Call for latest prices.

## Manage unattended remote systems

### Managed System Services for iSeries



- **Installing products and applying PTFs in an operator-less environment**
- **Sending status to the central system for tracking and control**
- **Eliminating the need to sign on to remote systems by processing commands from a central iSeries, AS/400 or S/390\* system**
- **Returning messages, spooled file data and output file data from commands.**

For more information -  
[ibm.com/servers/eserver/series/sftsol/sm.htm](http://ibm.com/servers/eserver/series/sftsol/sm.htm)

### Managed System Services for iSeries

Product No.	Description	Price \$
5722-MG1	Managed System Services for iSeries	*

Earlier versions available. Call for feature codes and prices.

\* Call for latest prices.

## Manage your backups effectively

### Backup, Recovery, and Media Services for iSeries

Want to backup Domino databases while they are in use? Want to back up iSeries and AS/400 user data to a Tivoli Storage Manager (formerly ADSM) server? Need a structured approach for backup? Need help in recovering data? Want an easy way to move data from disk to tape? Have a tape inventory that's hard to manage or synchronize?

BRMS/400 provides you with the comprehensive support you need to implement effective backup and hierarchical storage strategies dealing with performance disk, compressed disk and tape on iSeries and AS/400.

- Multiple serial tape device recovery
- Parallel tape device save and restore

For more information -  
[ibm.com/servers/eserver/series/sftsol/sm.htm](http://ibm.com/servers/eserver/series/sftsol/sm.htm)



Try and Buy  
**BRMS/400  
BRMS  
Network  
Feature  
BRMS  
Advanced  
Functions  
Feature**

Product/Feature (5722-BR1)	P05	P10	P20	P30	P40	P50
	<b>Price \$</b>					
BRMS/400	*	*	*	*	*	*
BRMS Network Feature	*	*	*	*	*	*
BRMS Advanced Functions Feature	*	*	*	*	*	*

\* Call for pricing for BRMS/400 for V4R3

\* Call for latest prices.

## Back up your data automatically

### Tivoli Storage Manager



- **Backup solution for major groupware, ERP, applications, and database products**
- **Can efficiently manage information growth**
- **Centralized administration for data and storage management**
- **Compatible with most storage device vendor products**
- **Exploits LAN, WAN and SAN infrastructure.**

Tivoli Storage Manager provides automated administrator-controlled backup for networks. It's the ideal solution if you need to manage distributed data centrally or enhance your disaster recovery capabilities.

AS/400 Application Client to Tivoli Storage Manager enables BRMS/400 to backup or archive iSeries and AS/400 user data on any Tivoli Storage Manager, including another iSeries or AS/400.

<b>Requirements:</b>	OS/400 V4R3
<b>Media:</b>	CD-ROM

For more information -  
[ibm.com/storage/adsm](http://ibm.com/storage/adsm) or [www.tivoli.com/storage](http://www.tivoli.com/storage)

The Tivoli Storage Management product set, including the UNIX, Windows NT, Windows 2000, OS/390, MVS, VM and AS/400 platforms, is introducing a new pricing model to help you deal with these issues. Called Tivoli Value-Based Pricing, it delivers better alignment between technology management costs and the value actually delivered to your organization.

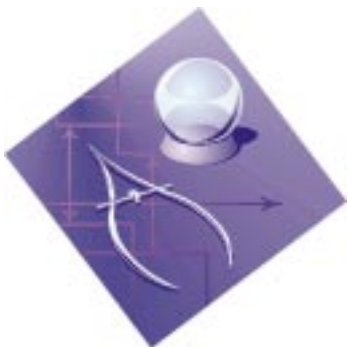
For more information, please call.

visit [ibm.com/shop/series](http://ibm.com/shop/series) call 800 426-2255

**DOMINO**  
Back up BRMS  
V4R4M01 lets you  
back up Domino  
R5.02 databases  
while they are in use!

## Manage and analyze system data

### Performance Tools for iSeries



#### ■ Collect, view and analyze your performance data

#### ■ Give expert analysis, detailed reports, graphical views and sophisticated modeling of your iSeries and AS/400 systems.

Along with its core Base Product, PT for iSeries can be packaged with a Manager Feature or Agent Feature.

Manager Feature provides an iSeries Navigator component that allows you to view key performance metrics and analyze specific resources that could be impacting the performance of your system. Additional tools are available to provide more detailed performance reporting and analysis capability.

PT for iSeries includes an iSeries Navigator plug-in which provides a graphical user interface to the product functions.

<b>Requirements:</b>	Base and Manager Feature 67MB; Base and Agent Feature 56MB. All designed to work with a 1,920 character display.
<b>Media:</b>	CD-ROM

For more information -  
[ibm.com/servers/eserver/series/sftsol/pt400.htm](http://ibm.com/servers/eserver/series/sftsol/pt400.htm)

### Performance Tools for iSeries

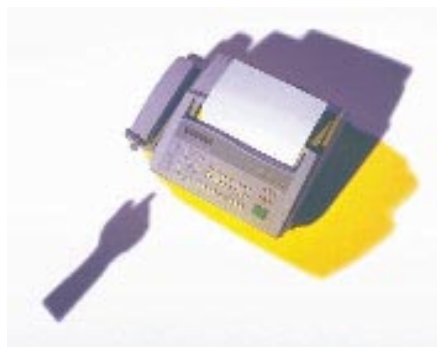
Product No.	Description	Price \$
<b>Base and Manager Features:</b>		
5722-PT1	Group P05	*
5722-PT1	Group P10	*
5722-PT1	Group P20	*
5722-PT1	Group P30	*
5722-PT1	Group P40	*
5722-PT1	Group P50	*
<b>Base and Agent Features:</b>		
5722-PT1	Group P05	*
5722-PT1	Group P10	*
5722-PT1	Group P20	*
5722-PT1	Group P30	*
5722-PT1	Group P40	*
5722-PT1	Group P50	*

Earlier versions available. Call for feature codes and prices.

\* Call for latest prices.

## Send and receive faxes from your AS/400 and iSeries

### Facsimile Support for iSeries



#### ■ Supports multiple combinations of the 2761, 2772, 2805 and 9771 integrated cards and 7852-400 modems for faxing

#### ■ Select destinations from a master list

#### ■ Broadcast faxes to predetermined distribution lists

#### ■ Automatically retry on failed faxes

#### ■ Customize fax profiles to individual users

#### ■ Send faxes to and from Lotus Domino

#### ■ Route faxes based on fax number or tone

#### ■ File received faxes in a TIFF class-F format.

With Facsimile Support for iSeries, you can send and receive faxes directly on the iSeries or AS/400 and send from Windows NT or client graphical applications.

Outbound faxes can include text, images, graphics, multiple fonts and electronic forms. Inbound faxes are placed in an iSeries or AS/400 database file as compressed images and can be viewed using image applications, a 3489, or Network Station client.

<b>Requirements:</b>	OS/400 V4R5, V5R1, or V5R2
<b>Media:</b>	AS/400: 1600 or 6250 bpi tape, CD-ROM, ¼- or ½-inch cartridge or 8mm tape cartridge.

For more information - [ibm.com/series/fax400](http://ibm.com/series/fax400)

Product No.	Description	Price \$
5798-FAX, -TBY	Group P05	*
5798-FAX, -TBY	Group P10	*
5798-FAX, -TBY	Group P20	*
5798-FAX, -TBY	Group P30	*
5798-FAX, -TBY	Group P40	*
5798-FAX, -TBY	Group P50	*

\* Call for latest prices.

visit

[ibm.com/shop/series](http://ibm.com/shop/series)

call 800 426-2255

## Add e-output for iSeries, including PDF and e-mail support

### Infoprint Server for iSeries



■ **Increased competitive advantage through the reengineering of business output to e-business output**

■ **Reduced costs and cycle times, and increased customer satisfaction, through electronic presentation of documents and reports**

■ **Increased reliability by applying the considerable print management capabilities of iSeries to output generated on the network**

■ **Leading-edge, integrated transforms for PCL, Postscript, and PDF - enabling iSeries print management of output.**

Infoprint Server for iSeries is a new, fully integrated iSeries program product that addresses the need to transform traditional organizational printed output as business applications evolve to e-business applications. Infoprint Server for iSeries is focused on reengineering output for electronic presentation and delivery, and on positioning the iSeries server for managing all print across the enterprise.

With Infoprint Server for iSeries, you can:

- Convert any standard iSeries (AS/400) output file to PDF
- Route PDF to the Integrated File System (IFS), to an output queue, or to e-mail
- Provide automatic e-mail of any iSeries (AS/400) output file using PDF, including user exits to facilitate customization
- Provide ability to segment an iSeries (AS/400) output file by logical group and create individual PDF files for each segment (individual documents or sections of a print file). These individual PDF files have the same output queue, e-mail, and IFS options.
- Create high-fidelity, real text PDF output (as opposed to digitized page images), ensuring complete document navigation, network efficiency, and superior performance
- Transform PCL, Postscript, and PDF print files into AFP
- Convert applications formatted using AS/400 page definitions (using the new Infoprint Designer for iSeries, for example) to AFP
- Convert standard AFP print files to fully portable and viewable AFP files (externally referenced resources such as fonts, page segments, and overlays are included)
- Index AFP print files for use with web browsers and archival systems
- Convert standard Internet image file formats – GIFF, TIF, and JPEG – to iSeries (AFP) image format.

For more information - [ibm.com/printers/iSeries](http://ibm.com/printers/iSeries)

Product No.	Description	SWG	Feature Code	Price \$
5722-IP1	Infoprint Server for iSeries	P05	0494	*
		P10	0495	*
		P20	0496	*
		P30	0497	*
		P40	0498	*
		P50	0499	*

\* Call for latest prices.

visit

[ibm.com/shop/iserries](http://ibm.com/shop/iserries)

call 800 426-2255

## Fully graphical output design for iSeries applications

### Infoprint Designer for iSeries



#### Supporting the requirements of today's complex documents and reports

■ Fully electronic pages combining data, text, electronic forms, graphics, image, bar coding, and typographic fonts

■ Can be used for the design of new output applications or the reengineering of existing applications.

Infoprint Designer for iSeries is an all-new, fully-graphical document design platform for iSeries and AS/400 output applications. Infoprint Designer does the complete job: designing image content, electronic forms, and most importantly, combining these elements with your application data into the completed page.

#### Infoprint Designer for iSeries provides integration:

- The three component modules, Infoprint Image Editor, Overlay Editor, and Layout Editor are seamlessly integrated with one another
- Data to be used in the application is automatically downloaded from the iSeries and completed resources are automatically uploaded
- Infoprint Designer for iSeries designs native, integrated print resources – page segments, overlays, page definitions, and form definitions
- New output applications take full advantage of the native, integrated AFP/IPDS architecture of the iSeries.

#### Infoprint Designer for iSeries provides ease of use:

- Infoprint Designer is specifically geared for the non-technical professional
- Infoprint Designer is a comprehensive system, providing a single point of design for the entire output application
- The multiple levels of integration built in to Infoprint Designer make it inherently easy to use
- High function, high precision professional platform tackles any design challenge.
- You are designing with the same physical resources – fonts, images, overlays – that will be used on the iSeries
- All elements required by an application are linked together as a project ensuring that Infoprint Designer, not the user, manages the components to completion
- Page formatting is application-independent; the underlying line-of-business program does not need to be changed.

#### Infoprint Designer for iSeries provides performance and reliability:

- The native printing and “e-output” architecture on the iSeries is built for performance and reliability. Infoprint Designer produces applications that snap seamlessly into this architecture and set of capabilities.

For more information - [ibm.com/printers](http://ibm.com/printers)

Product No.	Feature	Description	Price \$
5733-ID1	2472	Infoprint Designer for iSeries	*

Note: PRPQ 5799-GPW is available for additional concurrent design clients.

\* Call for latest prices.

visit

[ibm.com/shop/series](http://ibm.com/shop/series)

call 800 426-2255

## Your one-stop resource for fonts

### AFP Font Collection

#### AFP Font Collection

AFP Font Collection provides one-stop shopping for AS/400 fonts, with over 1,000 fonts designed to help you realize the full potential of your business documents. In addition, AFP Font Collection fonts are now supplied in outline format, providing the capability to change font sizes easily, to support the latest IPDS printers, and enable fully graphical document viewing (not to mention performance savings over raster fonts).



Type Transformer, completely enhanced and now available for Windows, enables you to create your own font designs or convert any TrueType or Adobe Type 1 outline font to an AFP font.

<b>Requirements:</b>	OS/400 V2R2 or later.
<b>Media:</b>	8mm, 1/4-inch, 1/2-inch and CD (V4)

Product No.	Description	Price \$
5648-B45	Fonts Only, for OS/400	*
	Type Transformer (Windows)	*

AFP Font Collection CD is included with orders of Print Services Facility/400 (PSF/400).  
\* Call for latest prices.

## Create AFP electronic forms, images & applications

### Advanced Function Printing Utilities for AS/400

AFP Utilities for AS/400 is a set of integrated modules that helps design and create AFP electronic forms, images and applications quickly and easily.



**Overlay Utility** enables you to create electronic forms right on your AS/400. Select from a wide range of fonts, include logos and select other graphics.

**Print Format Utility** is the AFP equivalent of Query/400, enabling you to build special print applications interactively directly from your iSeries or AS/400 database. Full AFP design capabilities make applications such as barcoded labels a snap.



<b>Requirements:</b>	OS/400 V4R2 or later. IPDS (Intelligent Printer Data Stream) printer recommended.
<b>Media:</b>	8mm, 1/4-inch, 1/2-inch and CD (V4) All supported OS/400 media
<b>Product No.:</b>	5769-AF1 (V4), 5722-AF1 (V5)

	P05	P10	P20	P30	P40	P50
	<b>Price \$</b>					
Advanced Function Printing Utilities for AS/400	*	*	*	*	*	*

\* See page 73 for ValuPak pricing that includes AFP utilities  
\* Call for latest prices.

## Industrial-strength print management

### Print Services Facility\* for iSeries V5R1



■ **Significant new version of the integrated print manager for IPDS printing**

■ **PSF/400 is complemented by the addition of Infoprint Designer (V4R5) and Infoprint Server (V5)**

■ **Industrial-strength printing provides the function and guaranteed delivery of direct-attached printing to TCP/IP-attached printers**

■ **Support the highly customized, fully electronic print applications (with electronic forms, typographic fonts, image, graphics, and bar coding) required for e-business environment**

■ **Utilize page and form definitions for integrated, application-independent document formatting (see Infoprint Designer for iSeries)**

■ **Integrate application output with fax, image, view, archival, and network distribution**

■ **AFP Font Collection CD included with PSF/400**

■ **Expanded printer speed ranges.**

PSF\* for iSeries, a feature of OS/400, is the system software for electronic output (AFP) and printing to Intelligent Print Data Stream (IPDS) printers. PSF/400 combines output from AS/400 applications with print resources such as electronic forms, fonts, images, bar codes and formatting definitions to create fully electronic, effective documents and reports. It then manages the entire printing process, ensuring completeness, accuracy and full error recovery. PSF/400 delivers the same functionality and error recovery for AFP and SCS output as direct-attached (twinax) AS/400 printers.

PSF/400 is required for IPDS printers defined as AFP = \*YES. All network-attached IPDS printers require PSF/400.

5722-SS1 (V5)	New	Upgrade from V4
	<b>Price \$</b>	
1-45 ipm*	*	*
1-100 ipm	*	n/a
Any speed	*	*

\* Price based on speed of fastest printer supported on installed AS/400 in impressions per minute (ipm). For speed range licensed, unlimited number of printers enabled.  
\* Call for latest prices.

PSF/400  
V5R1  
Includes  
AFP Font  
Collection and  
expanded print  
speed ranges.

## Digital output and electronic printing

### AFP PrintSuite



#### Advanced Print Utility (APU)

Advanced Print Utility lets you transform existing applications (without change) to produce complex electronic documents with new fonts, electronic forms, image and bar codes. You interactively redesign existing output. Then, APU automatically monitors and transforms based on your new design.

#### Page Printer Formatting Aid

Page Printer Formatting Aid (PPFA) is a compiler for creating external print formatting objects that separate the formatting of electronic documents from the application data. Once created these objects are plugged into the printer file and the application is transformed.

#### AFP Toolbox for AS/400

If you need to have complete output over each page element, AFP Toolbox is the answer. AFP Toolbox is a set of high-level callable functions that provide better control over the Advanced Function Printing (AFP) data stream.

#### SAP R/3 AFP Print

SAP R/3 AFP Print provides enhanced application output and support of ADP/IPDS printing for SAP R/3 users. SAP output is transformed into AFP while adding elements such as electronic forms, typographic fonts and bar coding. These new documents can then be routed to high-speed, system-managed IPDS printers.

<b>Requirements:</b>	OS/400 V3R7 or later, IPDS (Intelligent Printer Data Stream) printer recommended.
<b>Product No:</b>	5798-AF3 (V3R7, V4, V5)

AFP PrintSuite Family	P05	P10	P20	P30	P40	P50
	<b>Price \$</b>					
Advanced Print Utility	*	*	*	*	*	*
Page Printer Formatting Aid	*	*	*	*	*	*
AFP Toolbox	*	*	*	*	*	*

\* Call for latest prices.

## Upgrade to OS/400 V5R1

### Software Upgrades to V5R1



OS/400 V5R1 runs on all iSeries or AS/400 RISC models and is a prerequisite for the new 250/270/8xx/SBx/SB3 models.

	V3R1	V4R1	V4R2	V4R3	V4R4
One-Step upgrades from	X	X	X	X	X
V4R5 integrates with	X		X	X	X
	V2R3	V3R0.5		V3R4	V3R7
Two-Step upgrades from	X	X		X	X

#### OS/400

OS/400 Version 5 Release 1 is included in the price of a new iSeries or AS/400e Server.

#### Accommodation Charge

	<b>Price \$</b>					
Accommodation Charge <sup>†</sup>	*	*	*	*	*	*

<sup>†</sup> The accommodation charge ONLY applies to AS/400 customers already on V4 who have not previously been on Software Subscription.

\* Call for latest prices.

#### Transition Fees

	<b>Price \$</b>					
V3 to V4 Transition	*	*	*	*	*	*
V2 to V4 Transition	*	*	*	*	*	*

\* Call for latest prices.

For more information - [ibm.com/servers/eserver/iseries](http://ibm.com/servers/eserver/iseries)

visit

[ibm.com/shop/iseries](http://ibm.com/shop/iseries)

call 800 426-2255

## A 70-day software test drive

### Keyed Media Set



#### An opportunity to try new software

Try before you buy. That's the concept behind IBM's Keyed Media Set program.

With your V4R5 software, iSeries or AS/400e order, you will receive a special set of CDs containing the most popular AS/400 applications and associated features. Try the applications and features for a 70-day evaluation period. Before the end of 70 days, call 1-800-IBM-CALL to place your order and you will receive the software license key to continue to use it.

If you need this special set of CD's, call 800-IBM-CALL.

For more information - [ibm.com/servers/eserver/iseries](http://ibm.com/servers/eserver/iseries)

Prod ID	Description
5722-AF1	AFP Utilities
5722-AP1	Advanced DBCS Printer Support for AS/400*
	IPDS Printer Support
5722-BR1	BRMS
	Option 1 Network
	Option 2 Advance Function
5722-CM1	Communications Utilities
5722-DE1	DB2 Universal Database Extenders
5769-DP3	DB2 DataPropagator for iSeries Version 7.1
5722-IP1	Infoprint Server for iSeries
5722-JS1	Job Scheduler for iSeries
5722-PT1	Performance Tools
	Option 1 Manager Feature
	Option 2 Agent Feature
5722-QU1	Query for iSeries
5722-SS1	OS/400
	Media and Storage Extension Option 18
	Option 36 Print Service Facility (PSF/400) 1-45 IPM Printer Support
	Option 37 Print Service Facility (PSF/400) 1-105 IPM Printer Support
	Option 38 Print Service Facility (PSF/400) Any Speed Printer Support
	HA Switchable Resources Option 41
5722-ST1	DB2 Query Manager & SQL Kit for iSeries
5711-WDS	WebSphere Development Studio for iSeries
5722-XW1	iSeries Client Access Family

\* Included only for system/servers ordering double-byte languages (i.e. Japanese, Korean, Traditional Chinese, Simplified Chinese).

† These programs/features are processor-based and require a new software license key when the processor group of their AS/400 system is upgraded to a higher processor group.

visit

[ibm.com/shop/iseries](http://ibm.com/shop/iseries)

call 800 426-2255



## The easy way to upgrade to OS/400 V5R1

### Software Subscription for iSeries



■ **Simple, predictable way to plan and budget for many OS/400 V4 or later software upgrades**

■ **For a single fee, receive future iSeries or AS/400 software upgrades and new releases for a broad group of IBM software products at no additional charge**

■ **Prepay for new software releases and upgrades at locked-in rates for products included in the revised offering**

■ **Charges based on software tiers, not number of packages or users (if within the user maximum)**

■ **Can be applied to a new iSeries or AS/400 system, with no contract changes, if new system AS/400 is in the same software machine group**

■ **One and three year pre-payment options available**

■ **For products requiring upgrade entitlement not included with this offering see IBM Software Group's July, 2001 announcement for IBM Software Maintenance.**

#### Plan for and budget your software upgrades

When you need an OS/400 upgrade or an upgrade to a program you have previously acquired, where will the funds come from? Software Subscription for iSeries is the simple, predictable way to budget and plan for the cost of keeping current with OS/400 software.

For an up-front fee, you receive future iSeries and AS/400 software upgrades and new releases at no additional charge during your subscription period. Software Subscription is available for OS/400 Version 4 and later. Order it when you purchase OS/400 software.

– Lock in your rates. Prepay for new software releases and updates at locked-in rates.

– Predictable charges for future upgrades. Establish your software budget right now for 2002...and beyond.

– No upgrade charges. No fees for Release-to-Release or Version-to-Version software enhancement fees.

– Charges are based on software tiers, not number of packages or users (up to the number of users previously purchased).

– Simple software upgrades. When a new upgrade is announced, simply request it for delivery at no charge. No P.O.s, no invoices, no hassles.

– Transfer your subscription. Software Subscription can be applied to a new iSeries or AS/400 system, with no contract changes, if your new system is in the same software machine group.

– No software cost worries. When you upgrade your hardware, you may need to upgrade your software as well. You're covered if you remain in the same software machine group.

– Multiple payment options. Prepay for one or three years' worth of software enhancements for version updates and new releases.

Watch for the software subscription icon throughout the book! It indicates a Software Subscription is available for one or more of the products shown.

For more information -  
[ibm.com/servers/eserver/series/sftsol/subscribe2.htm](http://ibm.com/servers/eserver/series/sftsol/subscribe2.htm)

Software Machine Group	P05	P10	P20	P30	P40	P50
	<b>Price \$</b>					
1 Yr. Prepay	*	*	*	*	*	*
3 Yr. Prepay	*	*	*	*	*	*
Subscription After License Includes 1 year of subscription	*	*	*	*	*	*

\* Call for latest prices.

**Software**

Advanced Function Printing Utilities for AS/400	30
AFP Font Collection	30
AFP PrintSuite	31
AS/400e and iSeries Software Overview	4
Backup, Recovery, and Media Services for iSeries	26
Connect for iSeries	16
Content Management and Enterprise Information Portal	17
DB2 DataPropagator for iSeries	23
DB2 Extenders for iSeries, Version 7.1	20
DB2 Intelligent Miner for Data for iSeries V6.1	22
DB2 OLAP Server for AS/400	21
DB2 UDB Query Manager and SQL Development Kit for iSeries	23
DB2 Universal Database for iSeries	24
DB2 Warehouse Manager for iSeries	22
Domino for the iSeries and AS/400 R5 Server Family	10
e-business Software Overview	4
Facsimile Support for iSeries	27
Infoprint Designer for iSeries	29
Infoprint Server for iSeries	28
Integrated Domino Fax for iSeries	12
Job Scheduler for iSeries	24
Keyed Media Set	32
Lotus Domino Designer R5	11
Lotus Enterprise Integrator for AS/400	12
Lotus iNotes	11
Lotus Notes R5	11
Lotus QuickPlace	13
Lotus Sametime	13
Managed System Services for iSeries	25
Management Central - Pervasive	8
MQSeries for iSeries	20
Operating System/400 V5R1	6-7
OS/400 Operations Navigator	5
Performance Tools for iSeries	27
Print Services Facility for iSeries V5R1	30
QMF for Windows for iSeries	21
Small Business Suite for Linux	9
Software Subscription for iSeries	33
Software Upgrades to V5R1	31
System Manager for iSeries	25
Tivoli Storage Manager	26
WebSphere Application Server for iSeries	14
WebSphere Commerce Suite Version 5.1, Pro Edition for iSeries	15
WebSphere Development Studio for iSeries	18
WebSphere Development Tools for iSeries	19
WebSphere Transcoding Publisher	16

## Technology that simply works

The latest generation of iSeries servers is the result of IBM's continuing efforts to infuse enterprise-class technology throughout the entire **@server** line. The iSeries incorporates some of the most advanced business computing technology available anywhere. But technology by itself is not important – running your business is. That's why IBM has carefully structured the iSeries to be easy to own, easy to operate, flexible and expandable. All you need do is choose the iSeries that has the right levels of function and performance to meet your business needs.

## For more information

Visit **ibm.com/eserver/series/** announce or contact your IBM Marketing Representative or IBM Business Partner.



© Copyright IBM Corporation 2002

IBM Corporation  
Integrated Marketing Communications,  
Server Group  
Route 100  
Somers, NY 10589

Produced in the United States of America  
4-02

All Rights Reserved

This publication was developed for products and/or services offered in the United States. IBM may not offer the products, features or services discussed in this publication in other countries. The information may be subject to change without notice. Consult your local IBM business contact for information on the products, features and services available in your area.

IBM, the IBM logo, the e-business logo, AIX, AIX 5L, Chipkill, DB2, DB2 Universal Database, eLiza, MQSeries, POWER4, pSeries, RS/6000, S/390, SP, WebSphere and zSeries are trademarks or registered trademarks of International Business Machines Corporation in the United States, other countries, or both.

Java and all Java-based trademarks are trademarks of Sun Microsystems, Inc. in the United States, other countries, or both.

Linux is a registered trademark of Linus Torvalds.

UNIX is a registered trademark of The Open Group in the United States and other countries.

Other company, product, and service names may be trademarks or service marks of others.

IBM hardware products are manufactured from new parts, or new and used parts. Regardless, our warranty terms apply.

Photographs show engineering and design models. Changes may be incorporated in production models.

Copying or downloading the images contained in this document is expressly prohibited without the written consent of IBM.

This equipment is subject to FCC rules. It will comply with the appropriate FCC rules before final delivery to the buyer.

Information concerning non-IBM products was obtained from the suppliers of these products. Questions on the capabilities of the non-IBM products should be addressed with the suppliers.

All performance estimates are provided "AS IS" and no warranties or guarantees are expressed or implied by IBM. Buyers should consult other sources of information, including system benchmarks, to evaluate the performance of a system they are considering buying.