



Session: 42GH - 440281

@server **iSeries**

Access for Web: Run 5250 in a Browser

Schuman Shao
smshao@us.ibm.com
IBM Rochester

© Copyright IBM Corporation, 2005. All Rights Reserved.
This publication may refer to products that are not currently
available in your country. IBM makes no commitment to make
available any products referred to herein.



iSeries Access for Web – Sessions in Chicago

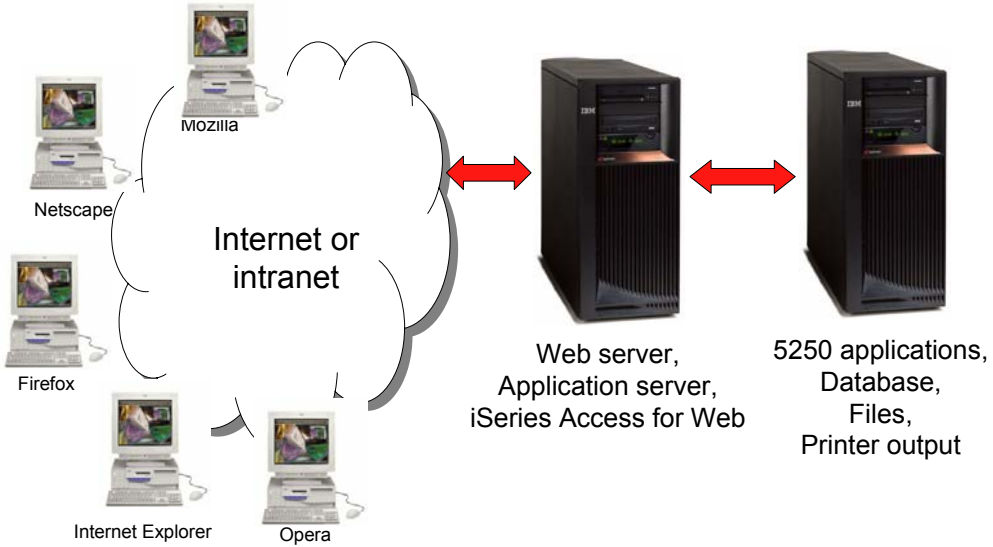
1. 31GM - iSeries Access for Web: Setup and Configuration
2. 32GM - iSeries Access for Web: The Browser Alternative!
3. 35LA - LAB: iSeries Access for Web: Installation and Configuration
4. 36LA - LAB: iSeries Access for Web: Installation and Configuration
5. 41GH - iSeries Access for Web Runs in a Portal
6. 42GH - iSeries Access for Web: Run 5250 in a Browser
7. 44GH - Tips and Techniques for iSeries Access for Web
8. 45GM - iSeries Access for Web: Database Access
9. 51GI – Programming with iSeries Access for Web
10. 52GH - iSeries Access for Web: Control Access to your iSeries Resources
11. 53GH - iSeries Access for Web: Printing Made Easy Through Your Browser
12. 55LA - OPEN LAB: iSeries Access for Web
13. 56LA - OPEN LAB: iSeries Access for Web





@server®

What is iSeries Access for Web



© 2005 IBM Corporation

iSeries

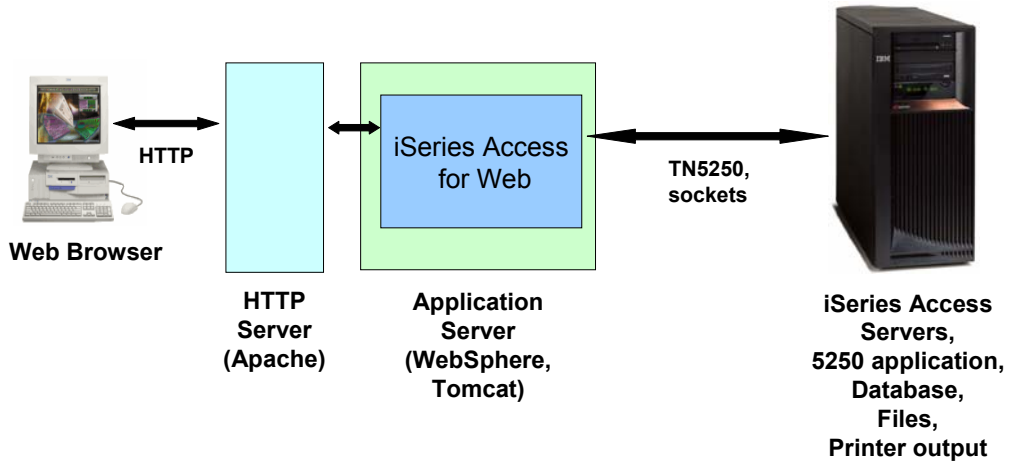
PAGE 3

ON DEMAND BUSINESS™



@server®

iSeries Access for Web Overview



© 2005 IBM Corporation

iSeries

PAGE 4

ON DEMAND BUSINESS™



iSeries Access for Web Functions

- My Personal Folder
- Print
 - Printer output
 - PDF Printer output
 - Printers
 - PDF Printers
 - Internet Printers
 - Internet Printer Shares
 - Printer shares
 - Output Queues
- Database
 - Tables
 - My Requests
 - Run SQL
 - Copy Data to Table
 - Import Request
 - Extract Server Data
- 5250
 - Active Sessions
 - Start 5250 Session
 - Configured Sessions
- Commands
 - Run commands
 - My commands
 - Search
- Files
 - Browse Files
 - File Shares
- Messages
 - Display Messages
 - Send Messages
 - Operator Messages
 - Message Queue
- Jobs
 - User Jobs
 - Server Jobs
- Customize
 - Preferences
 - Policies
 - Settings
- Download
 - List files to download
 - Create download files
- Other
 - Bookmarks
 - Change Password
 - Connection Pool
 - Status
 - Trace
 - About

Access for Web, 5722-XH2

New in V5R3



Access for Web enhanced 5250 interface is

- Fully integrated into Access for Web
- A 5250 interface
- Servlet-based
- Runs on the iSeries
- Sends HTML pages to the browser
- Datastream in Unicode

When Starting iSeries Access for Web must Signon

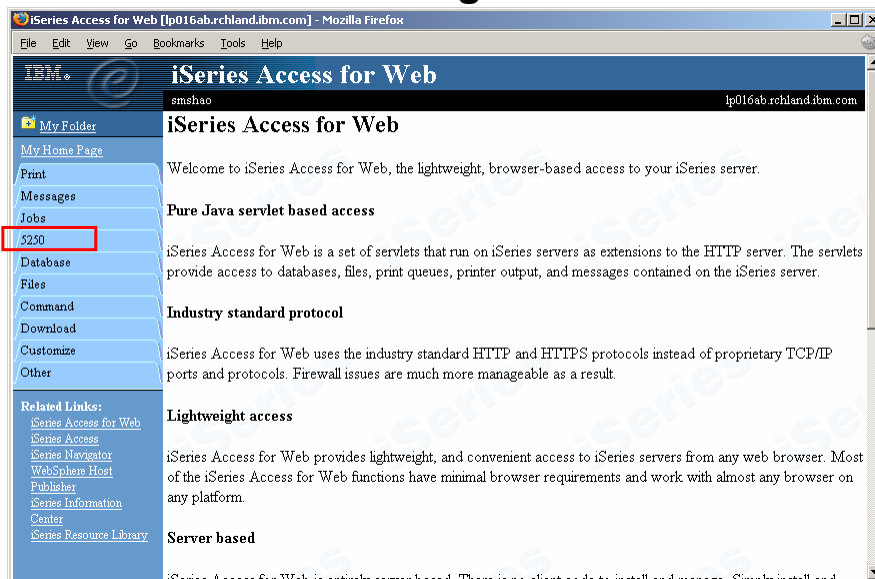


Netscape



Microsoft IE

Access for Web Main Page



Two ways to start

- Start a session dynamically
- Start a session using a stored configuration

5250 Tab

iSeries Access for Web 5250 [lp016ab.rchland.ibm.com] - Mozilla Firefox

File Edit View Go Bookmarks Tools Help

IBM iSeries Access for Web

smshao ip016ab.rchland.ibm.com

My Folder

My Home Page

Print

Messages

Jobs

5250

Active sessions

Configured sessions

Start session

Database

Files

Command

Download

Customize

Other

Related Links:

- iSeries Access for Web
- iSeries Access
- iSeries Navigator
- WebSphere Host
- Publisher
- iSeries Information Center

5250

Access 5250 user interface on your iSeries server with iSeries Access for Web.

[Active sessions](#)

- List active 5250 user interface sessions.

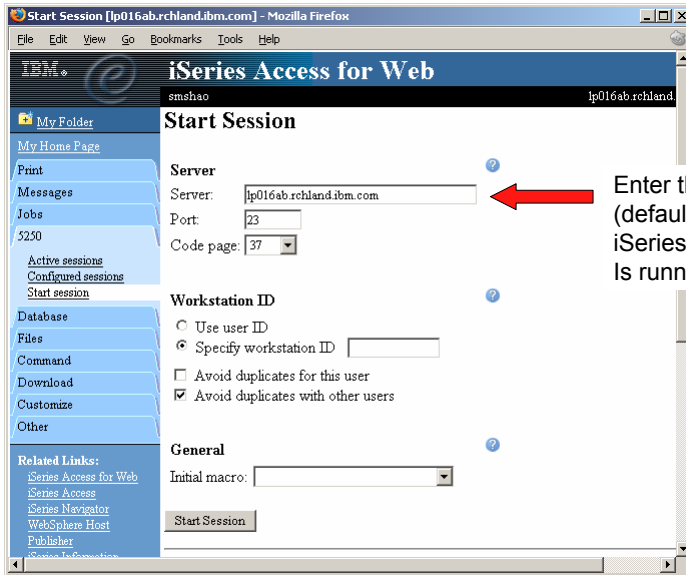
[Configured sessions](#)

- List configured 5250 user interface sessions.

[Start session](#)

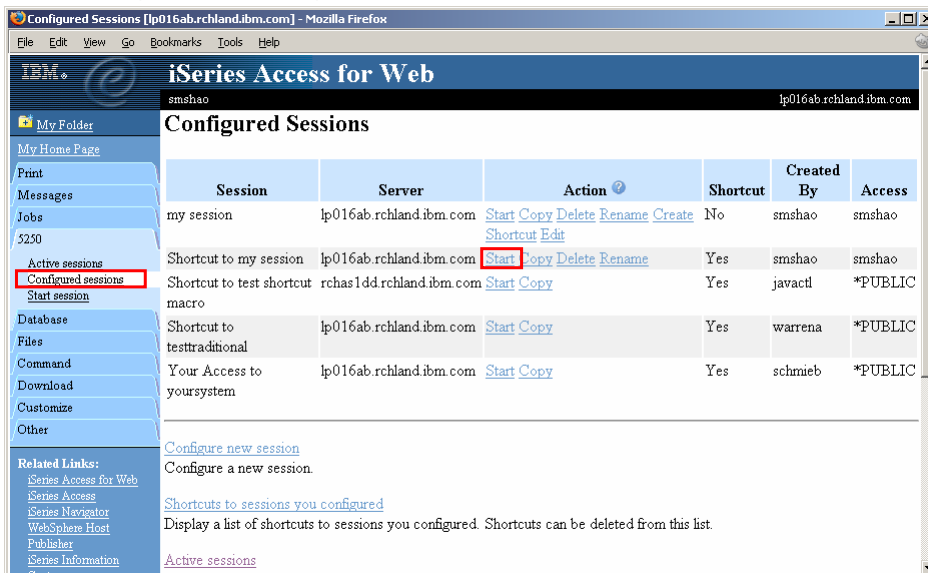
- Start a 5250 user interface session.

Start a Session Dynamically



Enter the server name
(defaults to the server
iSeries Access for Web
is running on)

Starting a Configured Session



Active Session – Web View

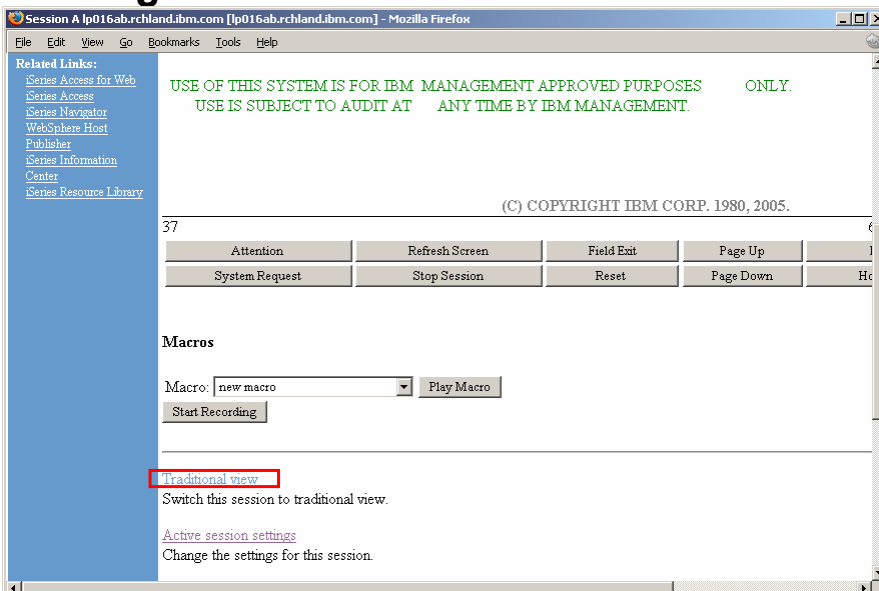
Active Session - Traditional View

Web View vs. Traditional View

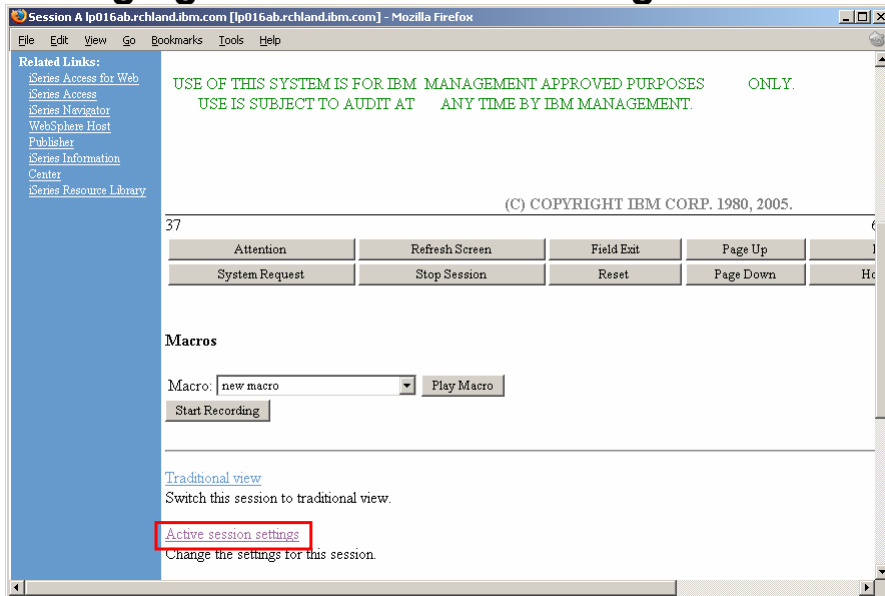
- Web View
 - Proportional font
 - Menu displayed as links
 - Active function keys displayed as buttons
 - Allows cursor positioning at non-input fields
 - Display "More..." as button
 - Message line (25th line) treated as help
- Traditional View
 - Fixed width font
 - Function key bar (F1-F24)
 - Background color configurable (default is black)

All the view settings are configurable. Configure web and traditional view settings for your environment.

Switching Views



Changing Active Session Settings



Active Session Settings

- Changing active session settings does not affect the configured session settings
 - The changes are tied to the running instance of the session
 - Changes only affect how this particular active session behaves
- Some settings are not modifiable
 - Server name
 - Port
 - Code page
 - Workstation ID
 - Default view (web or traditional)
 - Initial macro

Active Session Life Span

- Session resides on the server, not the workstation
- Session remains active until
 - User ends (stops) the session, or
 - Session time out due to inactivity
 - Time out value is configurable through Access for Web
- Closing the browser or turning off the workstation does not end the session
- Taking advantage of active session behavior
 - Leave the session and browse on the web, or
 - Leave your workstation and go to another workstation and
 - Reconnect to your session

Reconnecting to an Active Session

The screenshot displays the 'Active Sessions' page in a Mozilla Firefox browser window. The page title is 'Active Sessions [lp016ab.rchland.ibm.com] - Mozilla Firefox'. The browser address bar shows 'lp016ab.rchland.ibm.com'. The page content includes a table of active sessions and a sidebar with navigation options.

Server	Session	Started	Last Accessed	View	Action
lp016ab.rchland.ibm.com A		9/8/04 3:58:17 PM CDT	9/9/04 11:10:47 AM CDT	Web	Reconnect top Edit Share Session

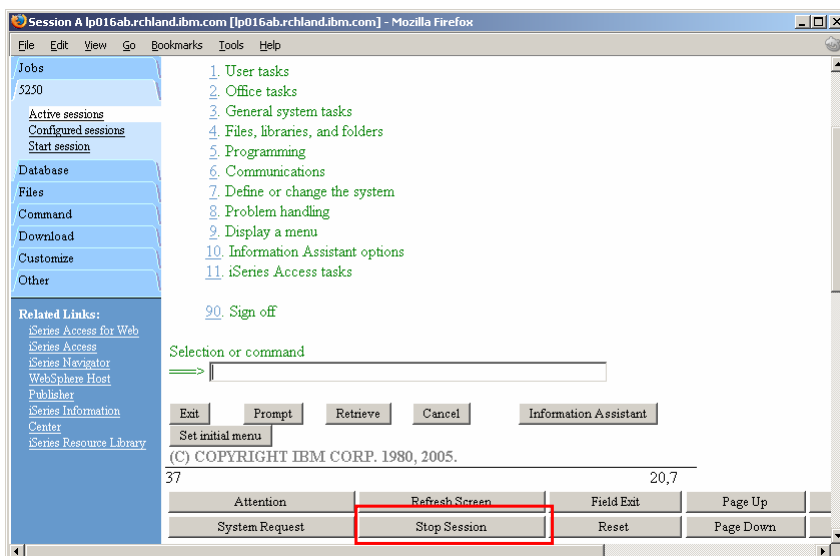
Navigation options in the sidebar:

- Active sessions
- Configured sessions
- Start session
- Database
- Files
- Command
- Download
- Customize
- Other
- Related Links:
 - iSeries Access for Web
 - iSeries Access
 - iSeries Navigator
 - WebSphere Host Publisher

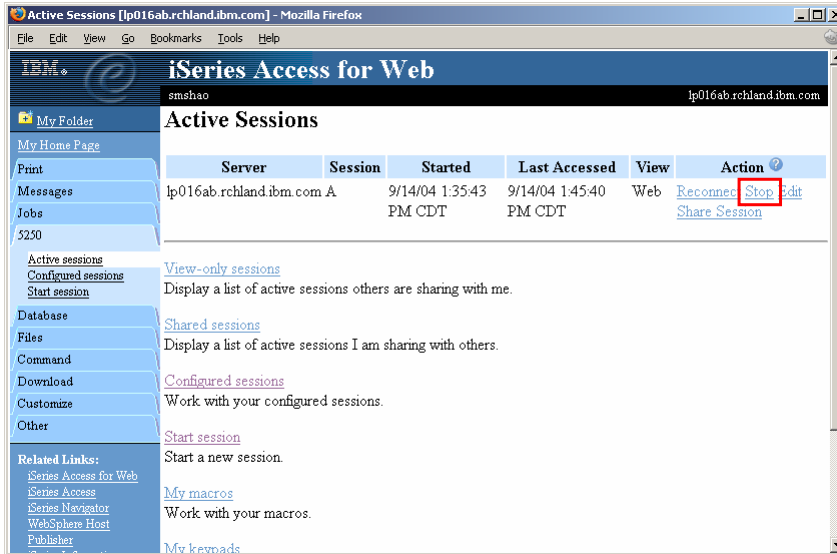
Ending a Session

- Properly clean up TN5250 connection
 - Frees up resources in application server (Access for Web)
 - Frees up resources on target server (TN5250)
- Two ways to end a session
 - From an active session
 - From active session list

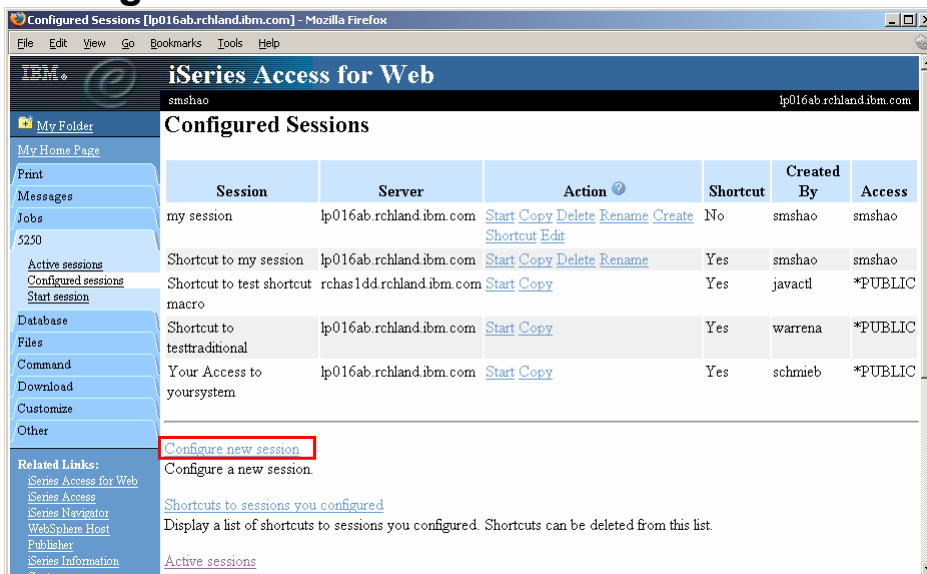
Ending a Session from Active Session



Ending a Session from Active Session List



Configure a New Session



Notes: Configure a New Session

See how session is added to configured list.

The Configured Sessions list displays saved session configurations for the current user. Session configurations are used to start 5250 user interface sessions with customized settings

Configure a New Session

General

Session: * required

Default view:

Initial macro:

Enable advanced JavaScript functions

Server

Server:

Port:

Code page:

Workstation ID

Use user ID

Specify workstation ID

Avoid duplicates for this user

Avoid duplicates with other users

Notes: Configure a New Session

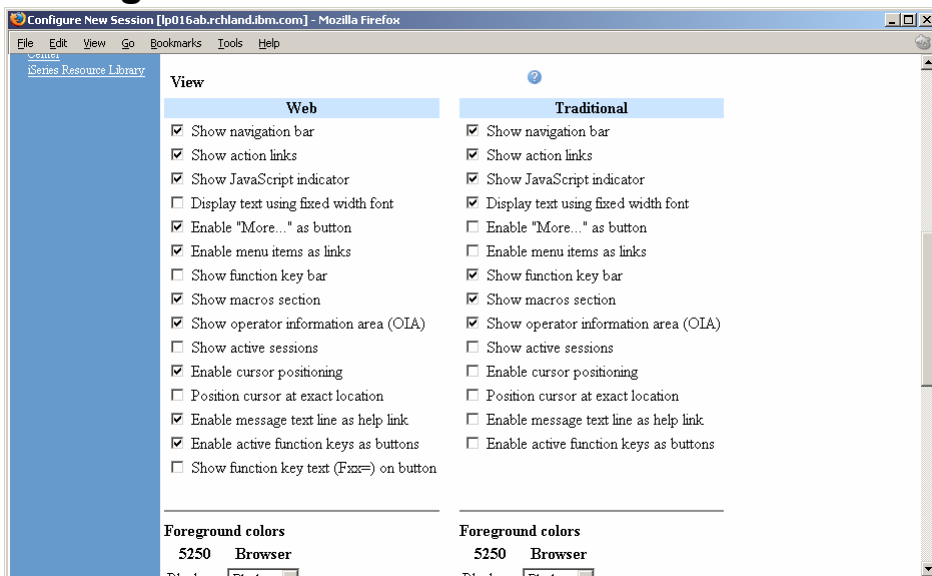
Session name - Session name uniquely identifies the session within the Configured sessions list.

Default view Default view specifies whether the Web view or the Traditional view is used when this session starts. The view can be changed while the session is active.

Enable advanced JavaScript functions for Internet Explorer - This option enables a 5250 user interface session to handle page up, page down, and function keys, when Microsoft Internet Explorer (version 5.0 and higher) is used. This option requires the browser to have JavaScript enabled. If this option is disabled, or a different browser is used, keypad buttons must be used to handle these keys

The server and workstation id parameters are the same as those of the start session.

Configure a New Session...





Notes: Configure a New Session

Show navigation bar

Use this setting to indicate whether the iSeries Access for Web navigation bar is displayed when a 5250 user interface session is active.

Show action links (new)

This setting controls whether the action links such as: Active session settings, My macros, and My keypads are displayed below the 5250 session user interface.

Show JavaScript indicator (new)

Use this setting to specify whether the JavaScript indicator is displayed at the bottom of the 5250 user interface page. The JavaScript indicator requires a JavaScript capable browser with JavaScript enabled.

Display text using fixed width font

This setting controls whether the 5250 user interface session uses a fixed width font or a proportional font.

Enable "More..." as button

Use this setting to specify whether fields containing "More..." are enabled as buttons or displayed as text. If "More..." fields are displayed as text, additional pages can be retrieved using a page down key on a keypad or the page down key on the keyboard.

Enable menu items as links

This setting specifies whether option numbers on menus (between 1 and 99) are displayed as links. To choose a menu option when this setting is not enabled, you must enter the menu option number in the command line.

Show function key bar

Use this setting to display the function key bar below the 5250 screen. The function key bar contains all of the function keys, F1 through F24, as buttons. The layout and content of the function key bar cannot be configured. Use My keypads to display a customized keypad above, below, or next to the 5250 screen.

Show macros section (new)

This setting specifies whether macros can be played and recorded. It does not restrict access to the My macros list.

© 2005 IBM Corporation

iSeries

PAGE 29



Notes: Configure a New Session

Show operator information area (OIA) (New)

Use this setting to indicate whether the operator information area (OIA) for the 5250 session is displayed. The operator information area is the area that displays information such as the input inhibited indicator and the cursor location.

Show active sessions (New)

This setting specifies whether the list of active sessions is displayed with each 5250 session page. Displaying the active session list with each 5250 page provides a quick way to switch between multiple active sessions.

Enable cursor positioning

This setting specifies whether non-input fields are implemented as links or as plain text. If non-input fields are implemented as links, choosing a link updates the current cursor position for the active session to the first position of the field. This is useful for functions which use the current cursor position. See Cursor positioning for more information. If Enable message text line as help link is also enabled, the message text setting overrides the cursor positioning behavior.

Position cursor at exact location (New)

Use this setting to enable the ability to position the cursor at an exact location within a field. This is useful when using an application that requires the cursor to be at an exact location within a field for context sensitive operations. This setting only takes effect if Enable cursor positioning setting is also enabled. (today assumes beginning of field)

Enable message text line as help link

Use this setting to enable the message text line as a link to the message help. If this setting is not enabled, the Enable cursor positioning setting can be used to enable retrieving message help.

Enable active function keys as buttons

This setting specifies whether the active function keys, at the bottom of the screen, are enabled as buttons or displayed as text. If the function keys are displayed as text, the functions can be invoked using the function key bar, a configured keypad, or the function keys on the keyboard. Each of these options have configuration considerations.

Show function key text (Fxx=) on button

This setting specifies whether "Fxx=" is included on the button text, when Enable active function keys as buttons is enabled. If active functions are not displayed as buttons, this setting is ignored. This setting is only available for the Web view. For the Traditional view, "Fxx=" is always included when active functions appear as buttons on the screen.

© 2005 IBM Corporation

iSeries

PAGE 30



Configure a New Session...

Configured Session Actions

Session	Server	Action	Shortcut	Created By	Access
my session	lp016ab.rchland.ibm.com	Start Copy Delete Rename Create Shortcut Edit	No	smshao	smshao
Shortcut to my session	lp016ab.rchland.ibm.com	Start Copy Delete Rename	Yes	smshao	smshao
Shortcut to test shortcut macro	rchas1dd.rchland.ibm.com	Start Copy	Yes	javactl	*PUBLIC
Shortcut to testtraditional	lp016ab.rchland.ibm.com	Start Copy	Yes	warrena	*PUBLIC
Your Access to yoursystem	lp016ab.rchland.ibm.com	Start Copy	Yes	schmieb	*PUBLIC

[Configure new session](#)
 Configure a new session.

[Shortcuts to sessions you configured](#)
 Display a list of shortcuts to sessions you configured. Shortcuts can be deleted from this list.

Configured Session Actions

- Start
 - Start the configured session
- Copy
 - Make a copy of the configured session for yourself
- Delete
 - Delete the configured session
- Rename
 - Rename the configured session
- Create Shortcut
 - Share the configured session with another user or group of users
- Edit
 - Change the configured session settings

Shortcuts

- iSeries Access for Web objects are only accessible by users that created them
- Shortcut is a pointer to an iSeries Access for Web object
 - Configured 5250 session
 - Database request
- Method used to share object with other users
 - Create shortcut for user or group to share with user or group
- User of the shortcut has read only access to the object
 - Cannot modify or delete the object
 - Can delete the shortcut if the shortcut is created for the user
 - Cannot delete the shortcut if the shortcut is created for a group the user belongs to
- Shortcuts to an object are deleted when the object is deleted

Shortcut Example

Shortcut granted to user profile (points to Action column)

Owner (points to Created By column)

Shortcuts granted to group the user belongs to (points to Action column)

User or group that was granted access (points to Access column)

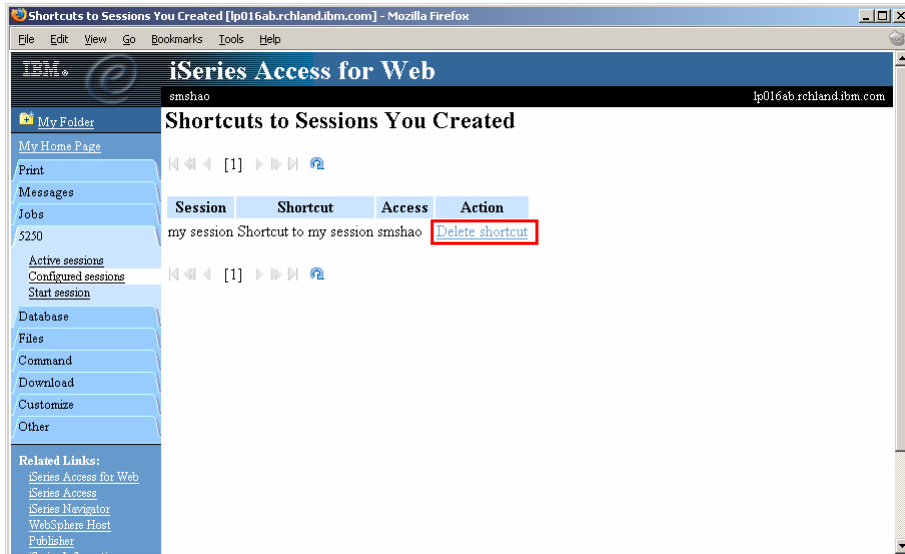
Session	Server	Action	Shortcut	Created By	Access
my session	lp016ab.rchland.ibm.com	Start Copy Delete Rename Create Shortcut Edit	No	smshao	smshao
Shortcut to my session	lp016ab.rchland.ibm.com	Start Copy Delete Rename	Yes	smshao	smshao
Shortcut to test shortcut macro	rchas1dd.rchland.ibm.com	Start Copy	Yes	javactl	*PUBLIC
Shortcut to testtraditional	lp016ab.rchland.ibm.com	Start Copy	Yes	warrena	*PUBLIC
Your Access to yoursystem	lp016ab.rchland.ibm.com	Start Copy	Yes	schmieb	*PUBLIC

Finding Shortcuts You Created

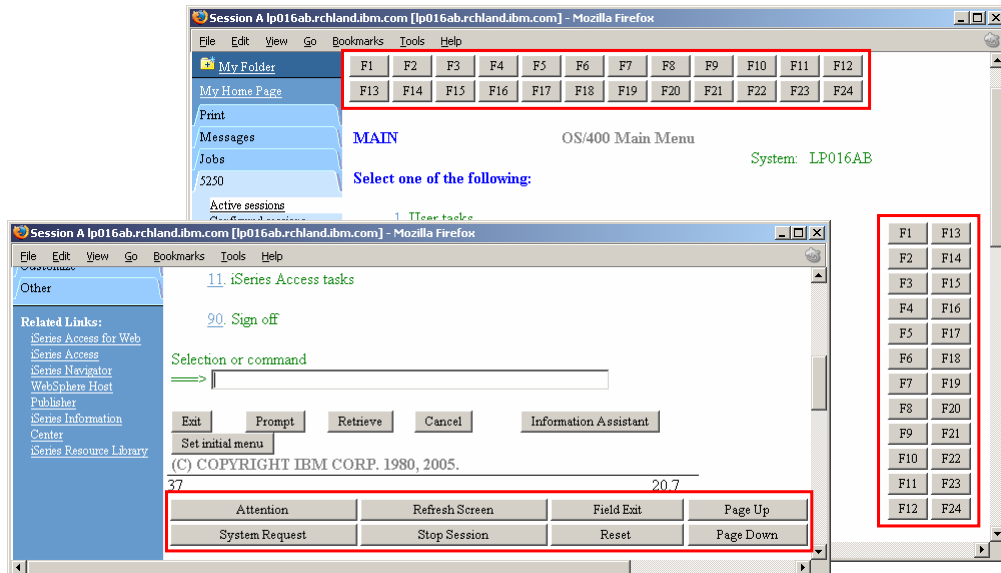
Session	Server	Action	Shortcut	Created By	Access
my session	lp016ab.rchland.ibm.com	Start Copy Delete Rename Create Shortcut Edit	No	smshao	smshao
Shortcut to my session	lp016ab.rchland.ibm.com	Start Copy Delete Rename	Yes	smshao	smshao
Shortcut to test shortcut macro	rchas1dd.rchland.ibm.com	Start Copy	Yes	javactl	*PUBLIC
Shortcut to testtraditional	lp016ab.rchland.ibm.com	Start Copy	Yes	warrena	*PUBLIC
Your Access to yoursystem	lp016ab.rchland.ibm.com	Start Copy	Yes	schmieb	*PUBLIC

Shortcuts to sessions you configured (points to the link below the table)

Managing Shortcuts You Created



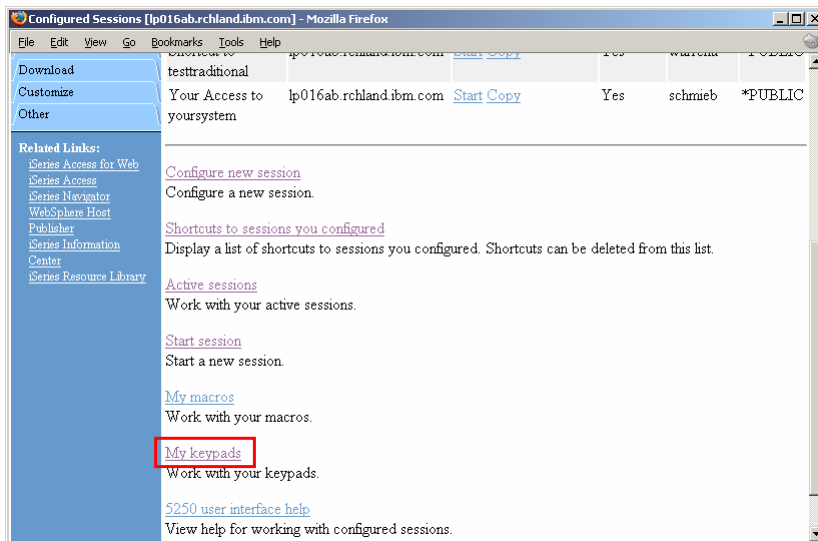
Keypads



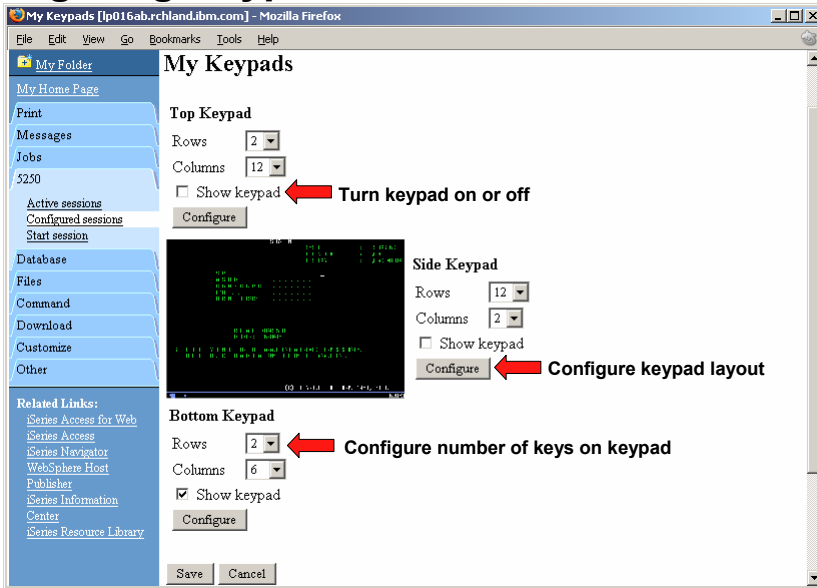
Keypads

- Three sets of keypads
 - Top, right, and bottom
 - Each set can be customized
 - Each set can be turned on or off
- Macros can be assigned to keypad
- Configuration is per user
 - One keypad configuration per user
 - Global across all session configurations
 - Not tied to session configuration

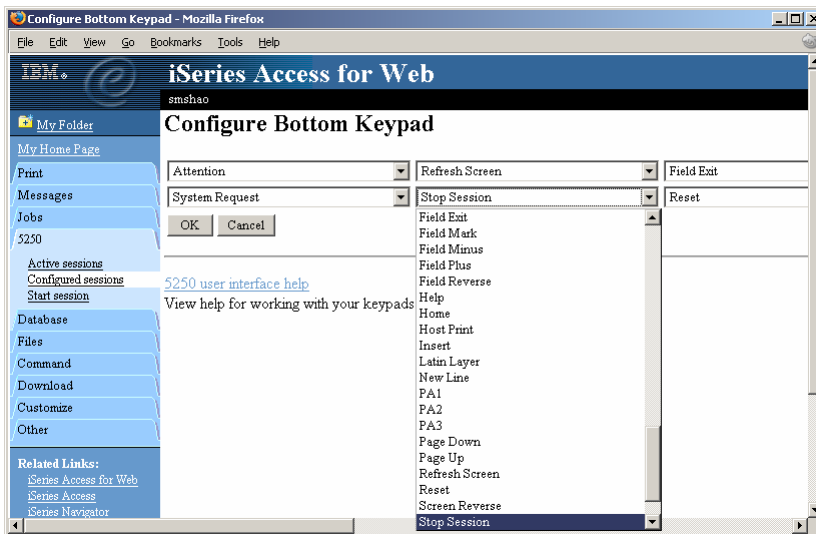
Configuring Keypad



Configuring Keypad



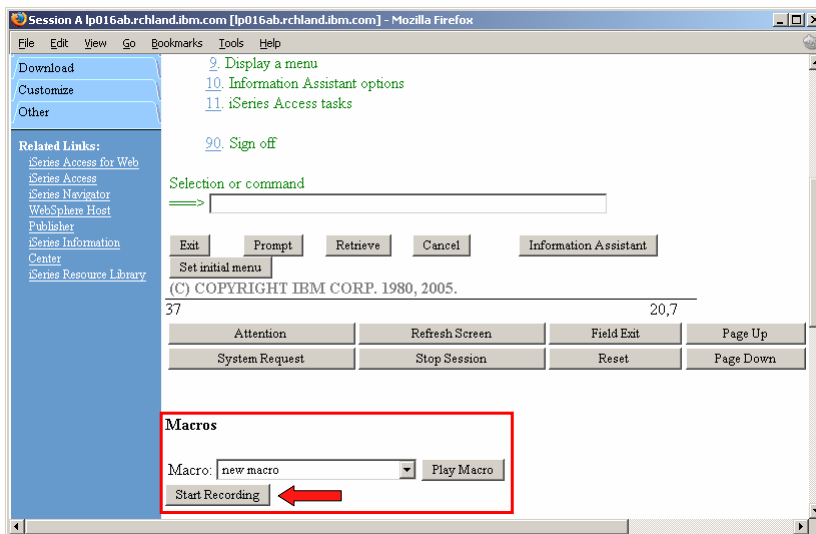
Configuring Keypad



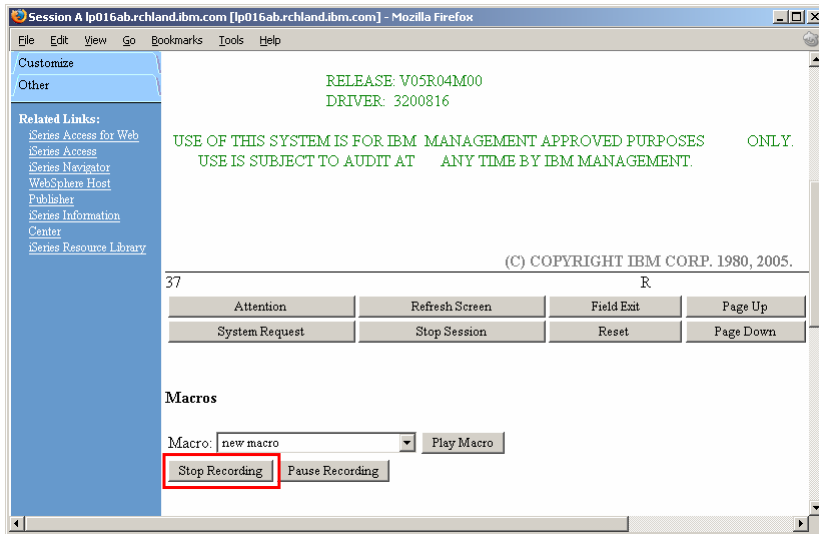
Macros

- Behaves differently than PC5250
 - Keys processed on a screen by screen basis
 - PC5250 – every key is recorded and played back
 - iSeries Access for Web – cursor positioned in field and keys entered into field
 - On a given screen, keys may not be processed in the same order as they are entered
 - Functionally equivalent, but behaves differently

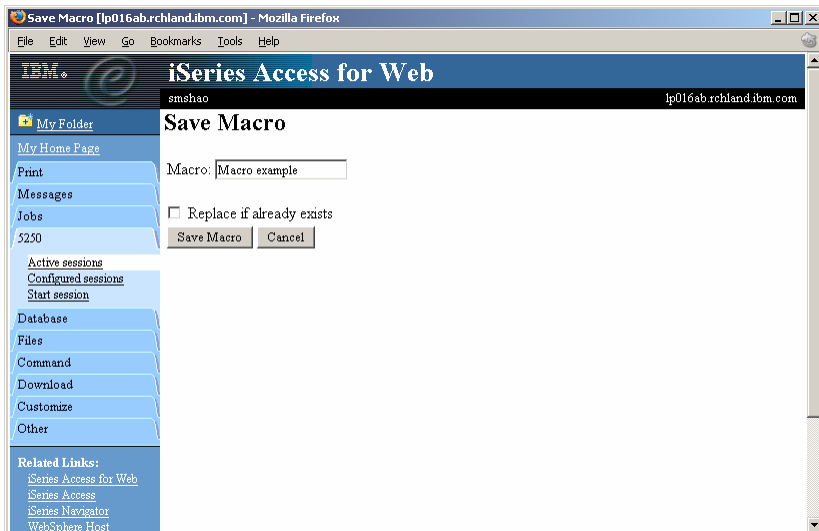
Recording Macros



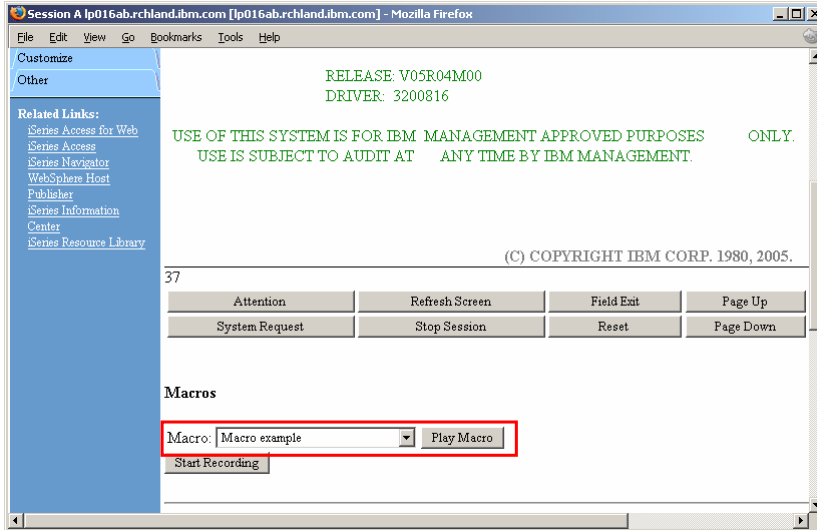
Stop Recording



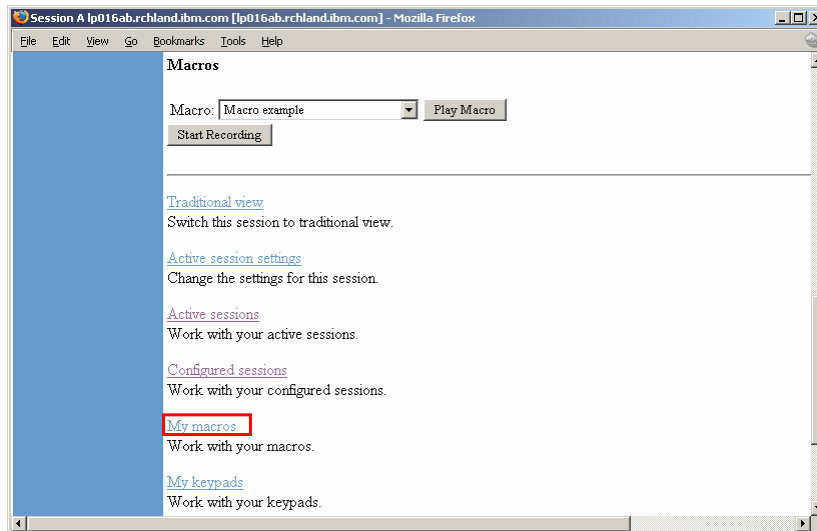
Naming the Macro



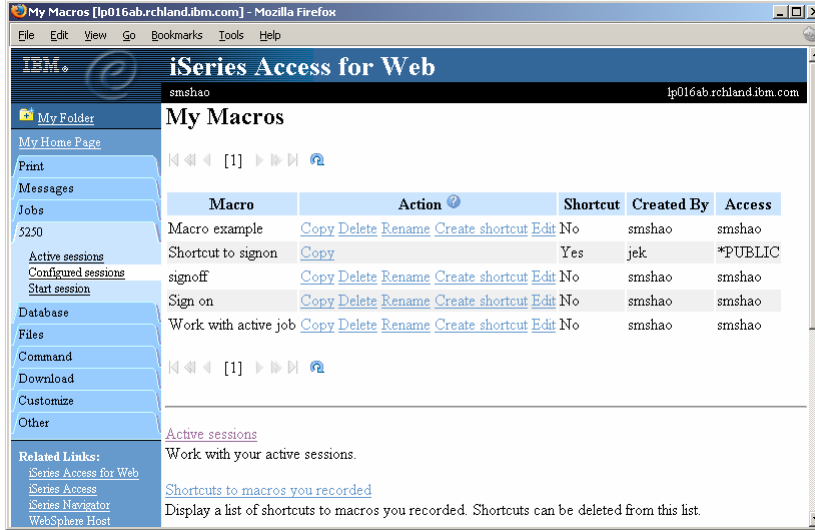
Playing Macro



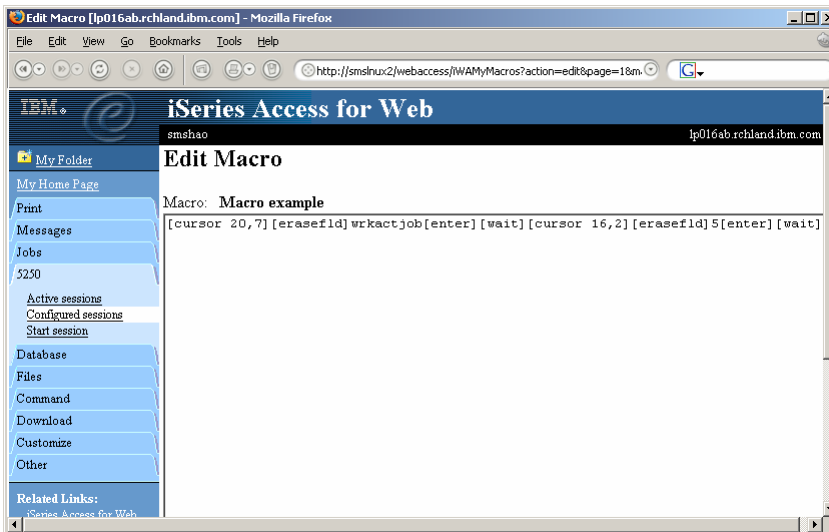
Managing Macros



Macro List



Editing a Macro



Notes: supported commands for macros

The supported cursor positioning commands are:

General macro commands
 [attn] - Attention
 [altview] - Alternate View
 [backspace] - Backspace
 [backtab] - Backtab
 [bof] - Beginning of field
 [clear] - Clear
 [down] - Cursor down
 [left] - Cursor left
 [right] - Cursor right
 [curse] - Cursor select
 [up] - Cursor up
 [delete] - Delete character
 [dspsosi] - Display SO/SI
 [dup] - DUP field
 [enter] - Enter
 [eof] - End of field
 [eraseeof] - Erase EOF
 [erasefld] - Erase field
 [erinp] - Erase input
 [fldext] - Field exit
 [fieldmark] - Field mark
 [field-] - Field minus
 [field+] - Field plus

General macro commands...

[pf1] - F1
 [pf2] - F2
 [pf3] - F3
 [pf4] - F4
 [pf5] - F5
 [pf6] - F6
 [pf7] - F7
 [pf8] - F8
 [pf9] - F9
 [pf10] - F10
 [pf11] - F11
 [pf12] - F12
 [pf13] - F13
 [pf14] - F14
 [pf15] - F15
 [pf16] - F16
 [pf17] - F17
 [pf18] - F18
 [pf19] - F19
 [pf20] - F20
 [pf21] - F21
 [pf22] - F22
 [pf23] - F23
 [pf24] - F24
 [help] - Help
 [home] - Home

General macro commands...

[insert] - Insert
 [newline] - New line
 [pa1] - PA1
 [pa2] - PA2
 [pa3] - PA3
 [pageup] - Page up
 [pagedn] - Page down
 [reset] - Reset
 [sysreq] - System request
 [tab] - Tab field
 [test] - Test request

Bi-directional text support commands

[base] - Base
 [close] - Close
 [fldrev] - Field reverse
 [latinlayer] - Latin layer
 [screenrev] - Screen reverse

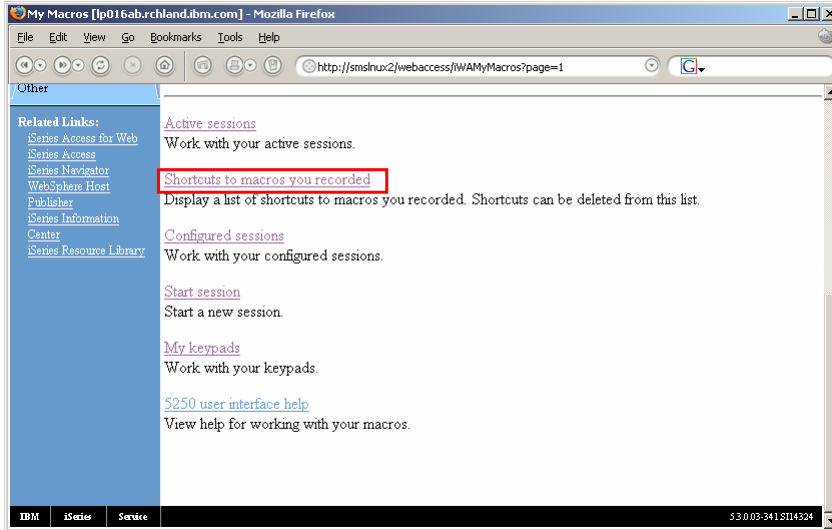
Other macro commands

[cursor row,column] - Locate cursor at specified row and column. Row and column must be numbers.
 [pause] - Pause 1 second
 [pause n] - Pause n seconds
 [wait] - Wait for input

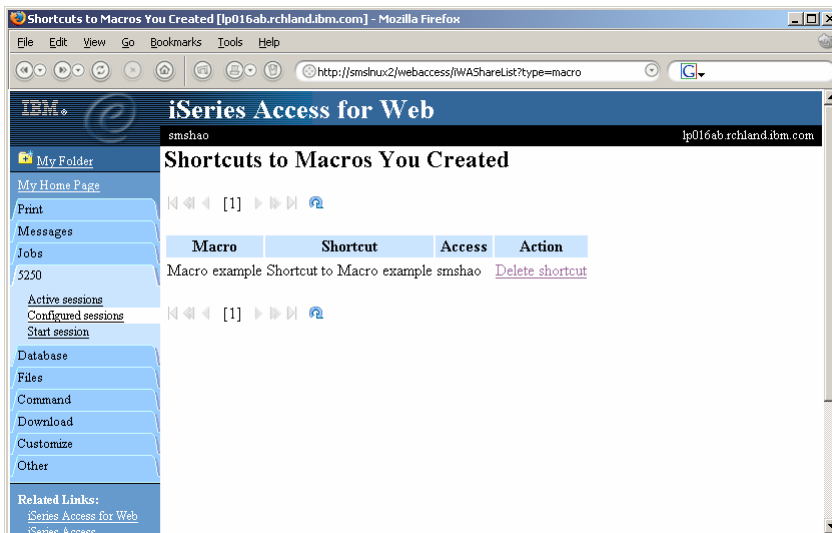
Sharing a Macro

Macro	Action	Shortcut	Created By	Access
Macro example	Copy Delete Rename Create shortcut Edit	No	smshao	smshao
Shortcut to signon	Copy	Yes	jek	*PUBLIC
signoff	Copy Delete Rename Create shortcut Edit	No	smshao	smshao
Sign on	Copy Delete Rename Create shortcut Edit	No	smshao	smshao
Work with active job	Copy Delete Rename Create shortcut Edit	No	smshao	smshao

Managing Macro Shortcuts



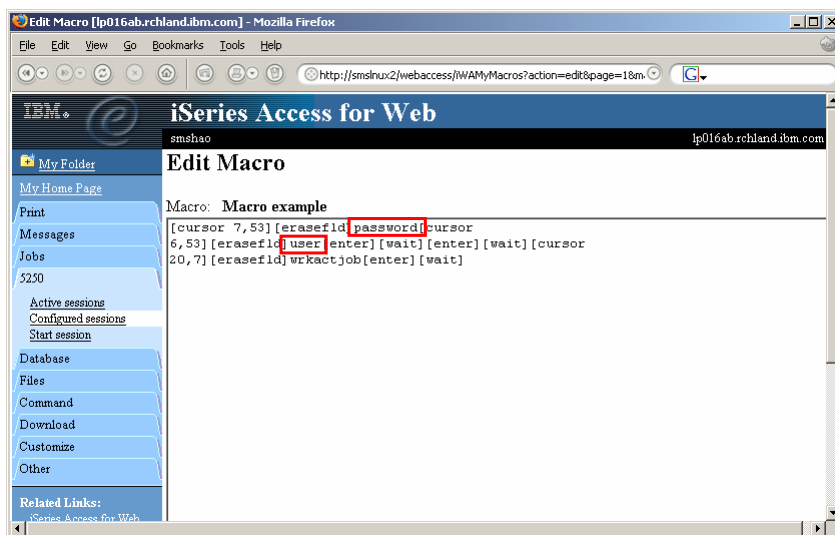
Macro Shortcut List



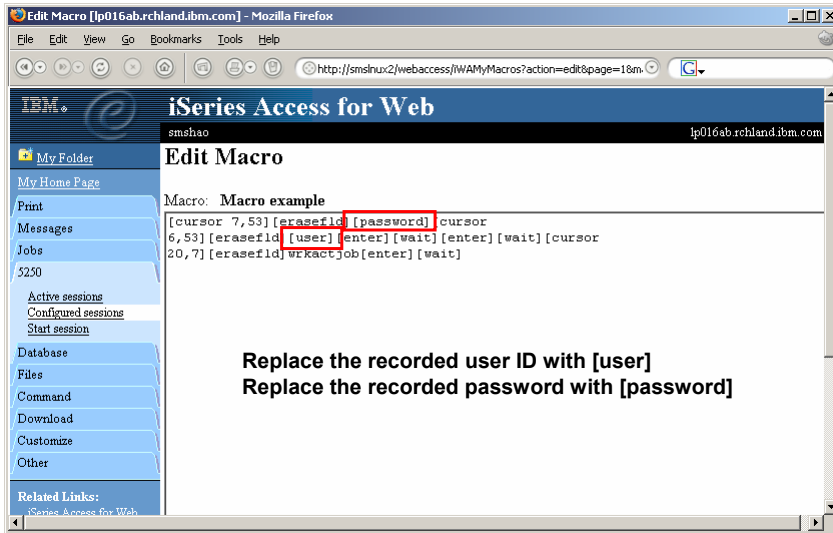
Single Sign On with Macro

- Create a macro to login to 5250
 - Using your own user ID and password
- Edit the macro and replace your user ID and password with directives to use the user's login
- Share the macro (create shortcut) with the user or group
- Associate the macro with a session so the macro is executed when the session starts
- Share the session (create shortcut) with the user or group

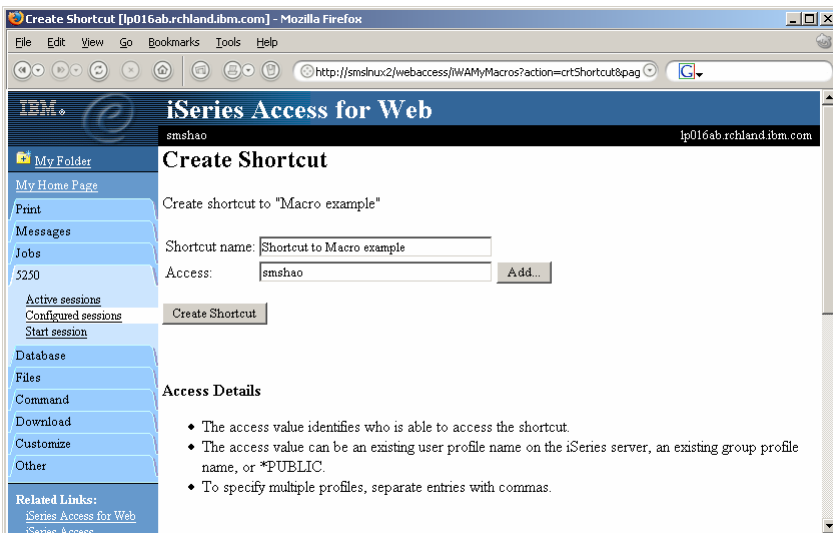
Edit Macro



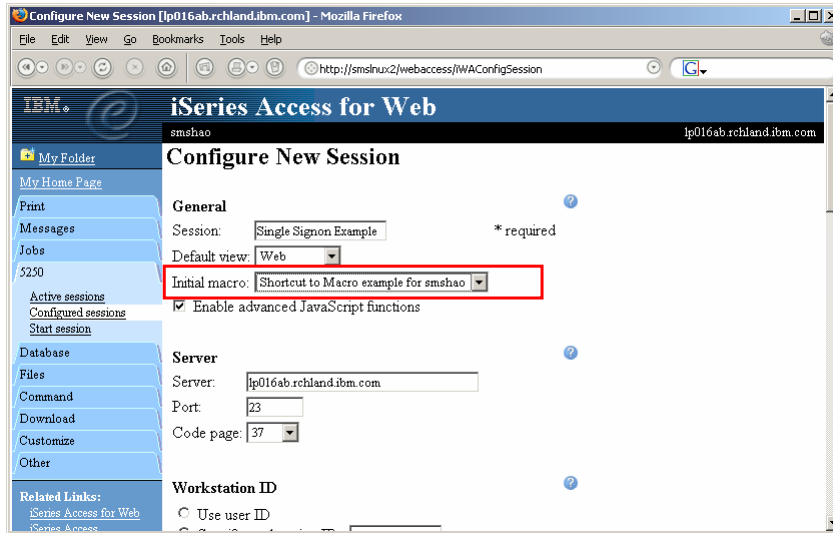
Edit Macro



Share the Macro



Create New Session



Share the Session



Starting the Session

Session	Server	Action	Shortcut	Created By	Access
my session	lp016ab.rchland.ibm.com	Start Copy Delete Rename Create Shortcut Edit	No	smshao	smshao
Shortcut to my session	lp016ab.rchland.ibm.com	Start Copy Delete Rename	Yes	smshao	smshao
Shortcut to Single Signon Example	lp016ab.rchland.ibm.com	Start Copy Delete Rename		hao	
Shortcut to test shortcut macro	rchas1dd.rchland.ibm.com	Start Copy	Yes	javactl	*PUBLIC
Shortcut to testtraditional	lp016ab.rchland.ibm.com	Start Copy	Yes	warrena	*PUBLIC
Single Signon Example	lp016ab.rchland.ibm.com	Start Copy Delete Rename Create Shortcut Edit	No	smshao	smshao

Start Session Result

**User is taken directly to the application
5250 session is logged in using the user's ID and password**

CPU %: .0 Elapsed time: 00:00:00 Active jobs: 205

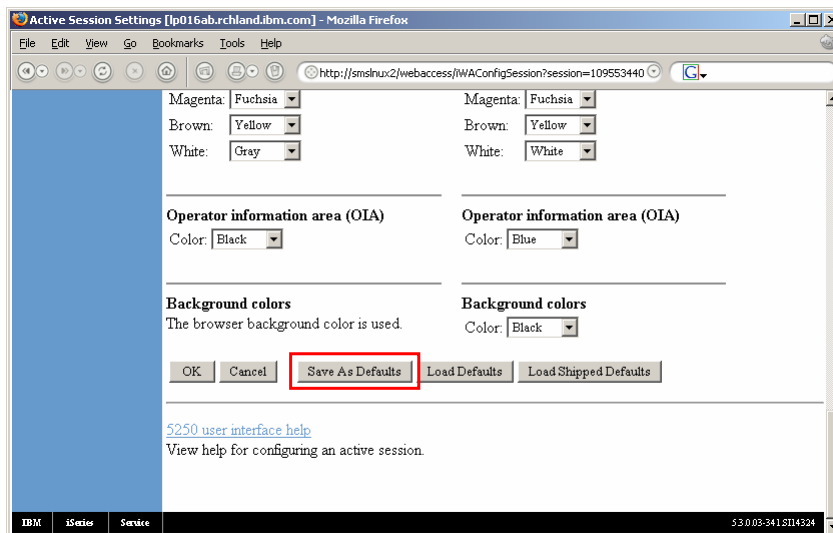
Type options, press Enter.
 2=Change 3=Hold 4=End 5=Work with 6=Release 7=Display message
 8=Work with spooled files 13=Disconnect ...

Opt	Subsystem/Job	User	Type	CPU %	Function	Status
<input type="checkbox"/>	BLDSHIPSS	QSYS	SBS	.0		DEQW
<input type="checkbox"/>	RCBLDSHIP	RTANNER	BCH	.0	PGM-QD2BRCV	DEQW
<input type="checkbox"/>	BLDTESTSS	QSYS	SBS	.0		DEQW
<input type="checkbox"/>	RCBLDTEST	RTANNER	BCH	.0	PGM-QD2BRCV	DEQW
<input type="checkbox"/>	QASE5	QSYS	SBS	.0		DEQW
<input type="checkbox"/>	ADMIN	QEJBSVR	BCH	.0	PGM-QASESTRSVR	JVAW
<input type="checkbox"/>	QASE51	QSYS	SBS	.0		DEQW
<input type="checkbox"/>	QBATCH	QSYS	SBS	.0		DEQW

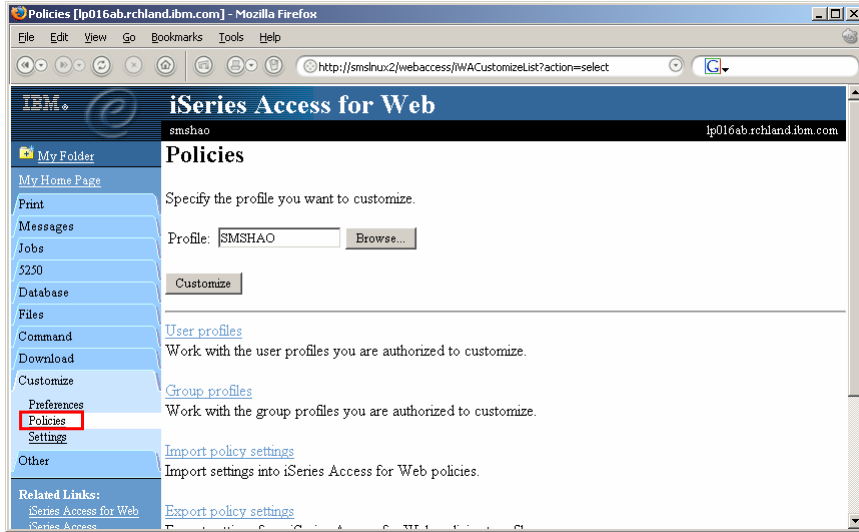
Session Defaults

- Default values are used to
 - Start a session dynamically
 - Configure a new session
- Two ways to set defaults
 - User can set the default values
 - Default values only apply to the user
 - Use a configured session as default (policy)
 - May be set for user or group
 - If both are set, policy setting overrides user defaults

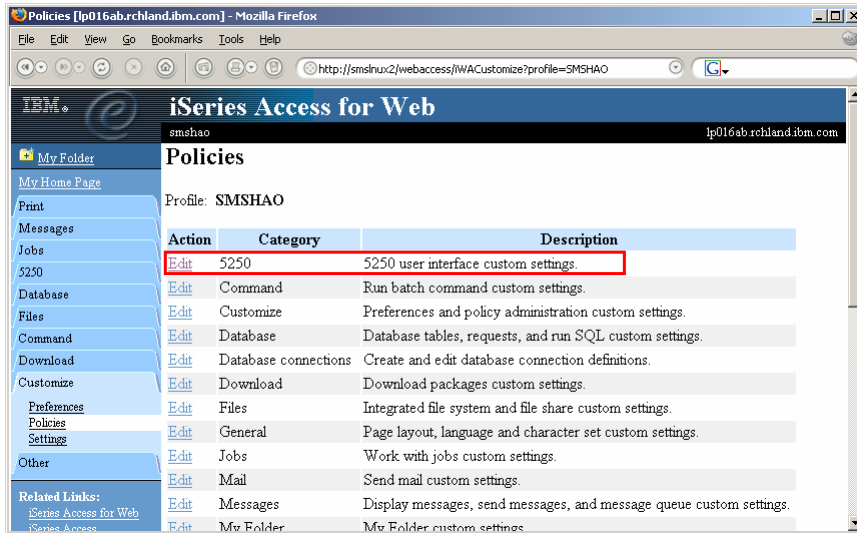
Setting User Defaults



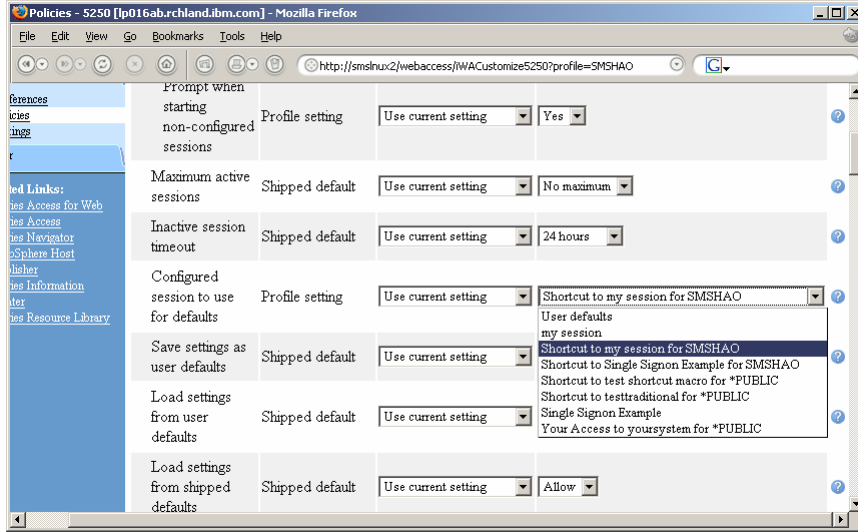
Setting Default Session



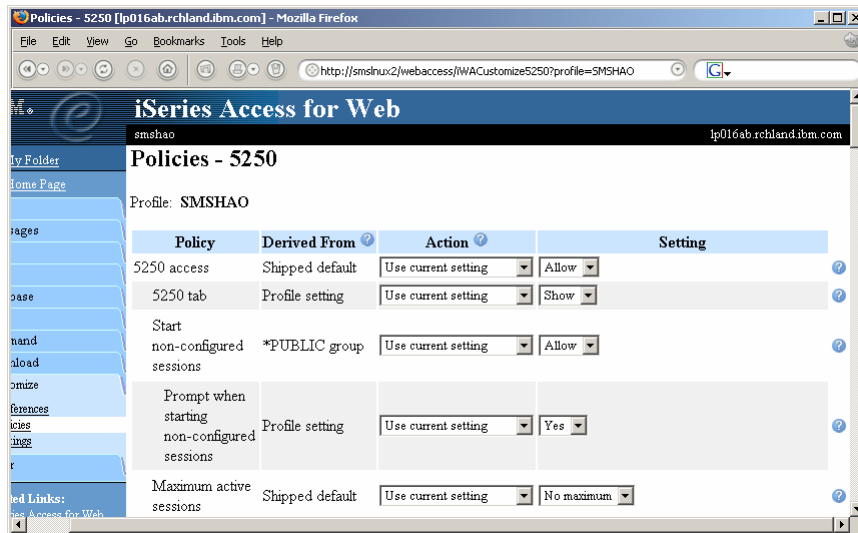
Setting Default Session



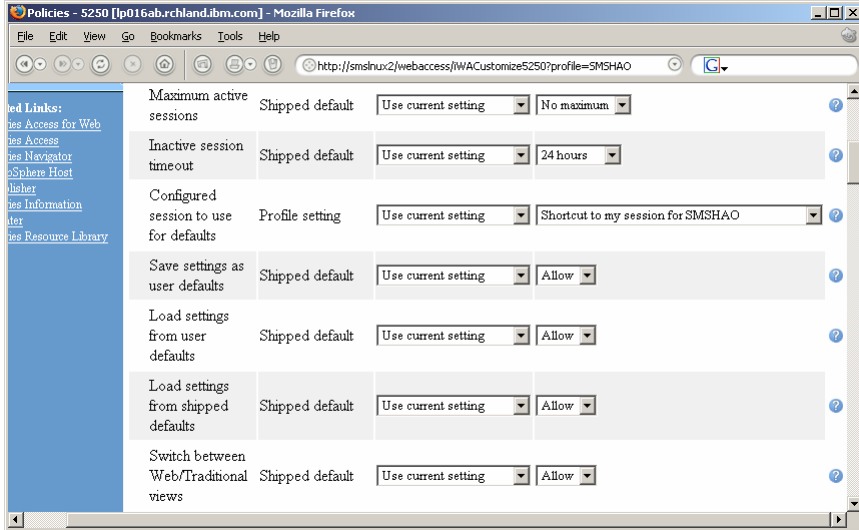
Setting Default Session



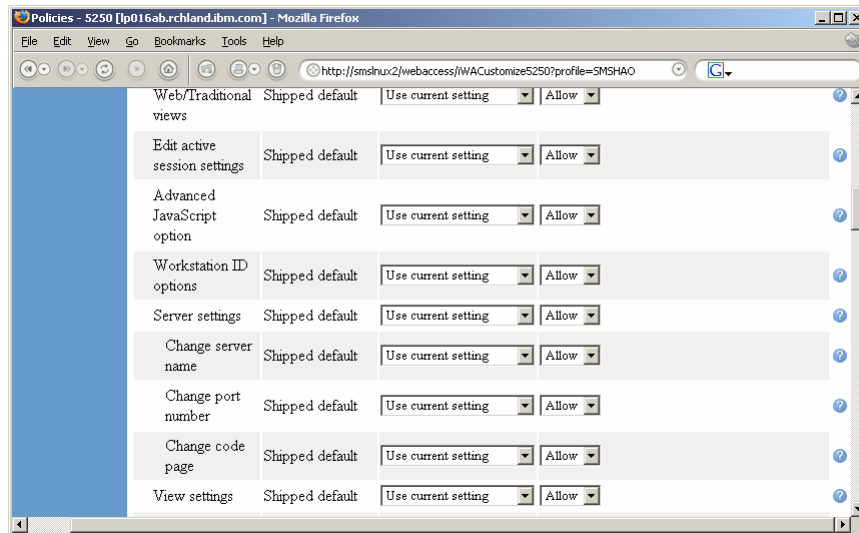
5250 Policies



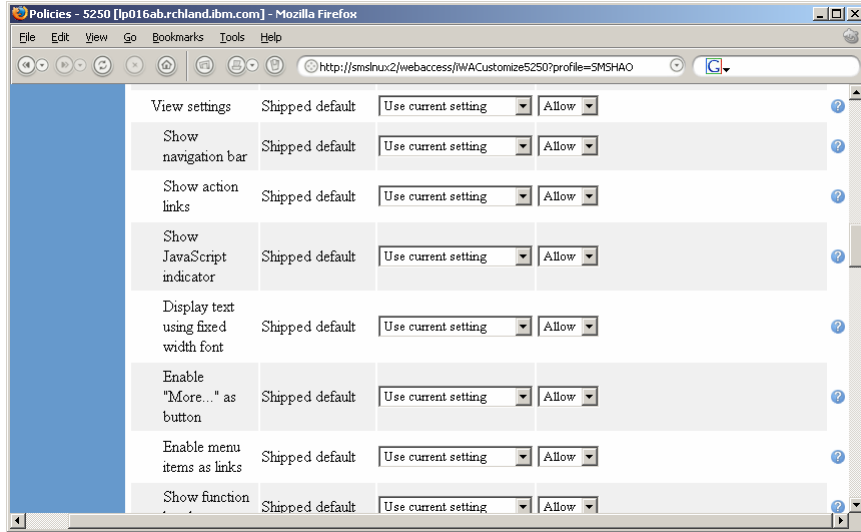
5250 Policies



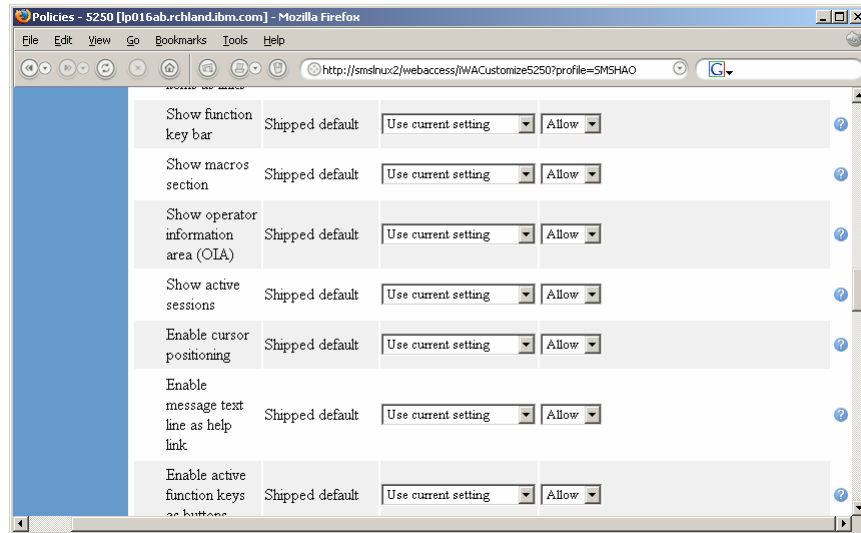
5250 Policies



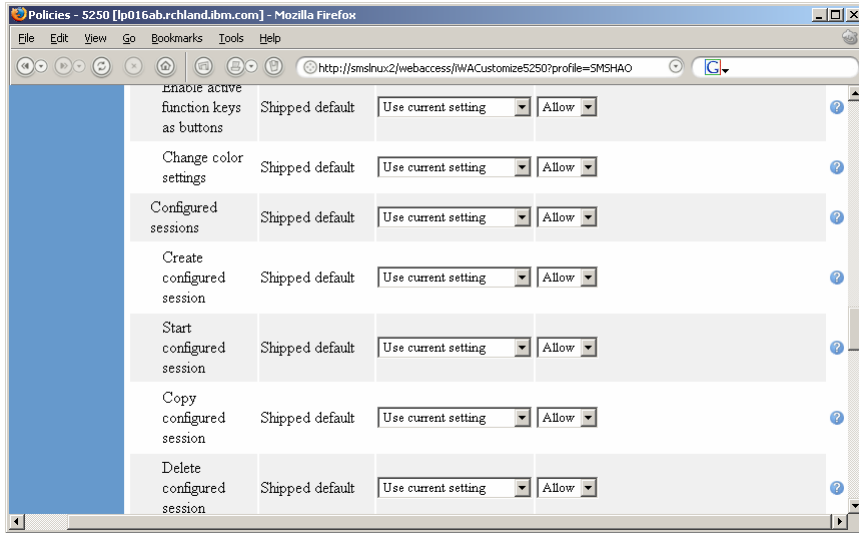
5250 Policies



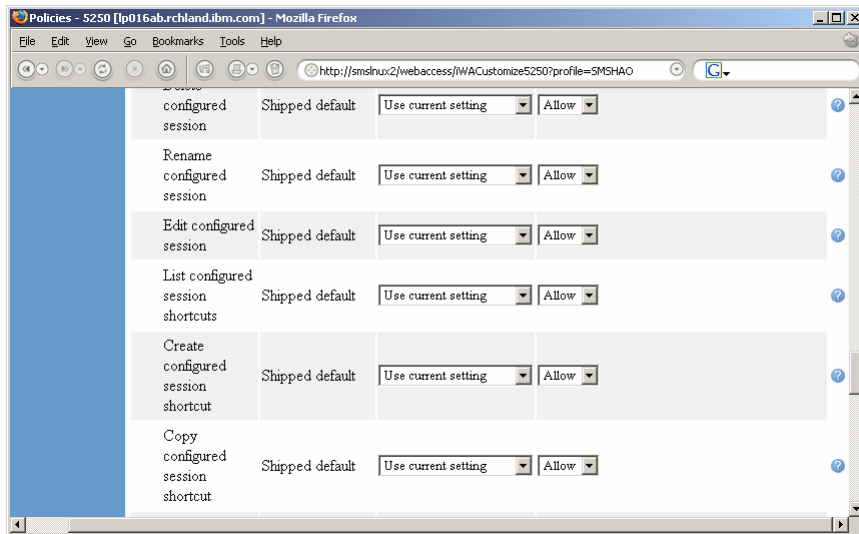
5250 Policies



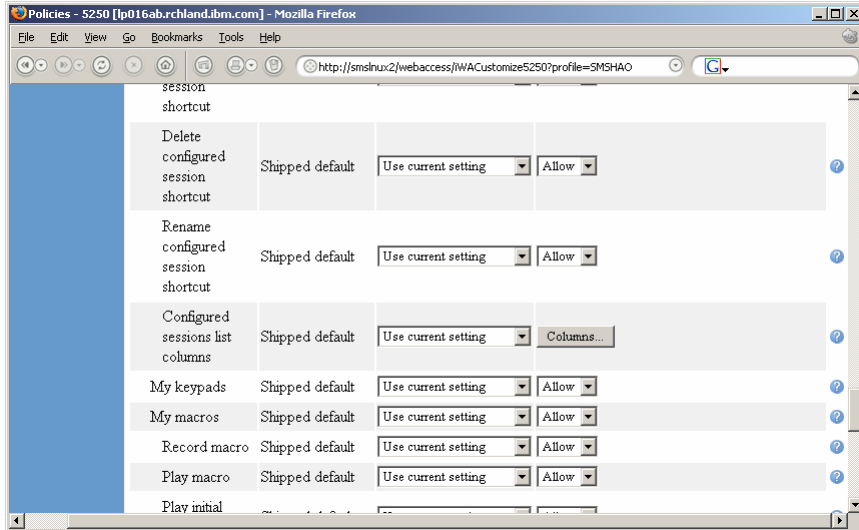
5250 Policies



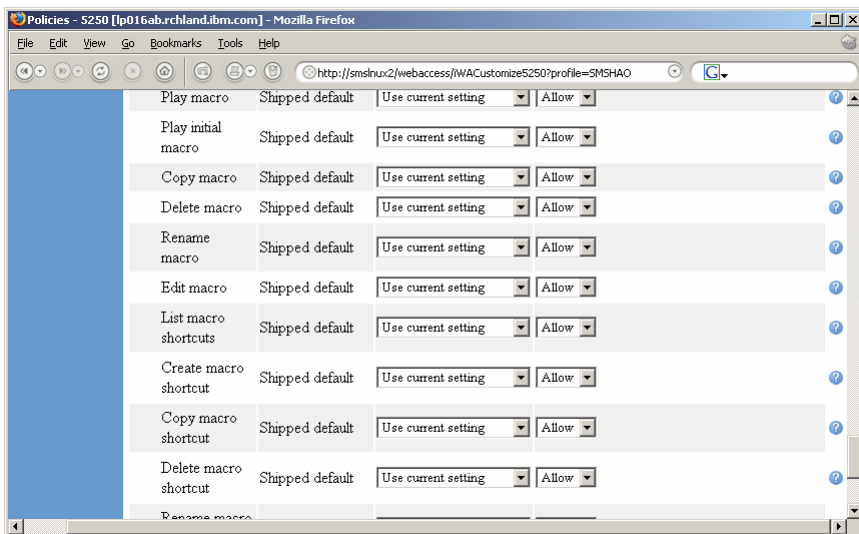
5250 Policies



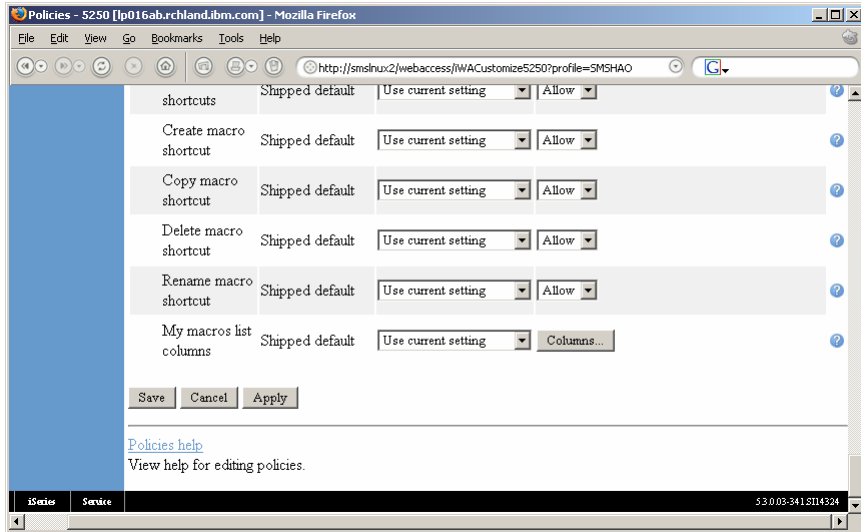
5250 Policies



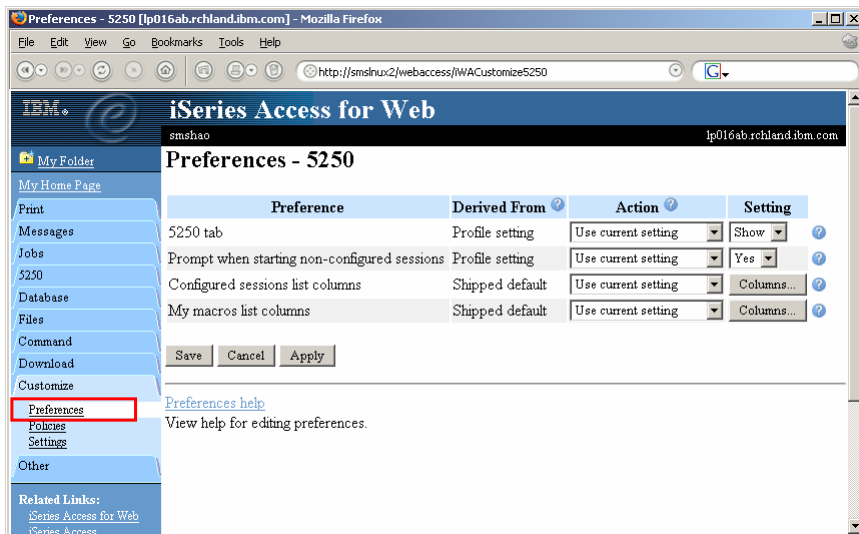
5250 Policies



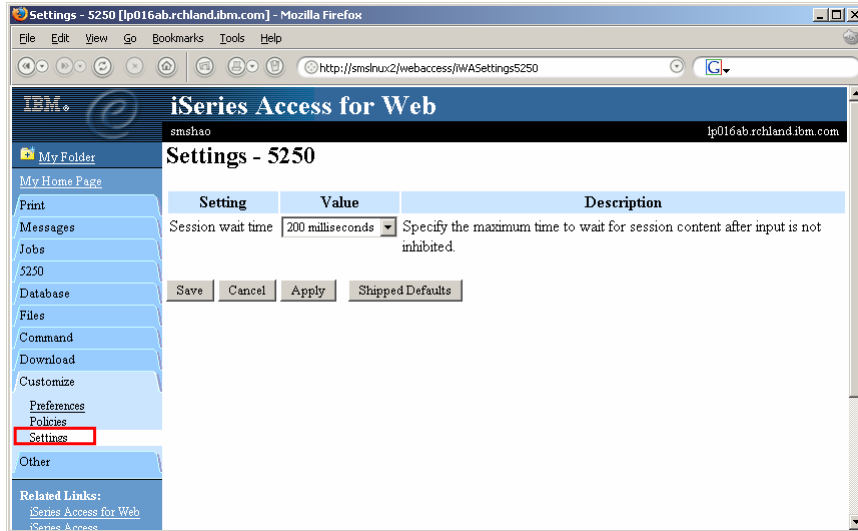
5250 Policies



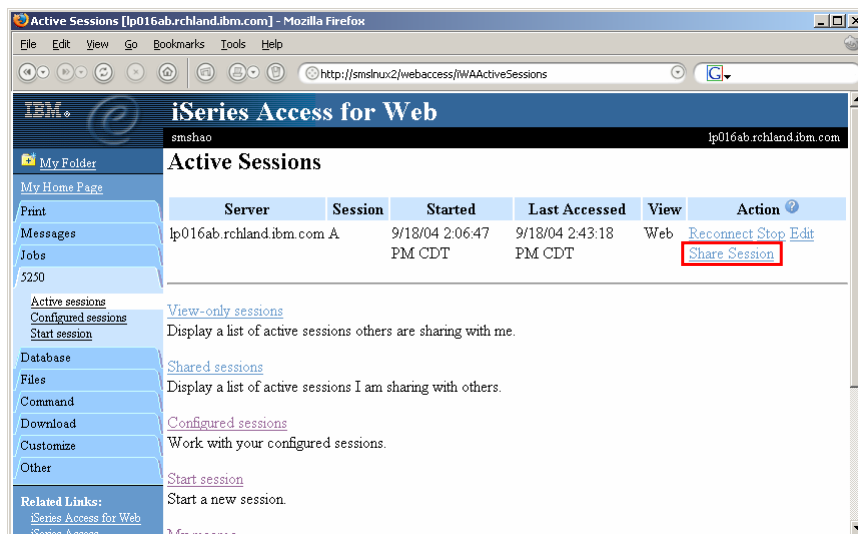
5250 Preferences



5250 Settings



Sharing an Active Session



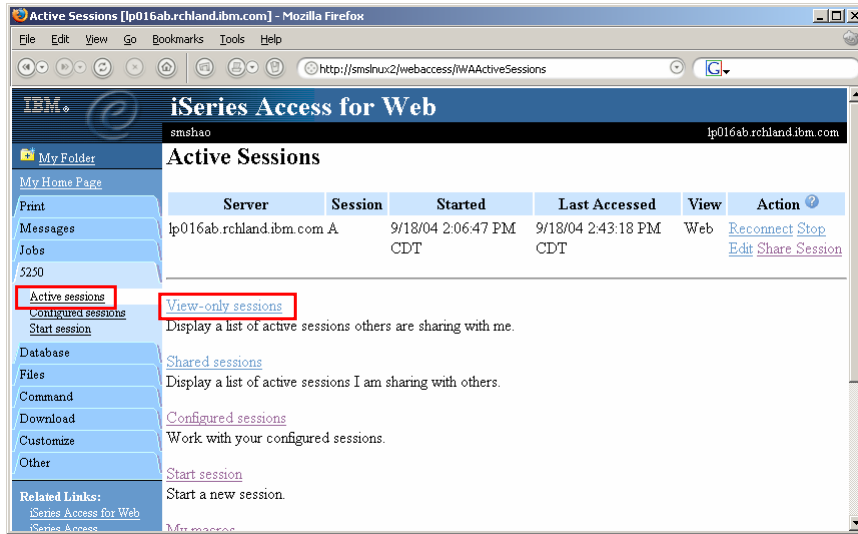
Notes: Shared Sessions

Active sessions can be shared with other users and groups. The user who starts the session maintains full control of it. Users with whom the session is shared can only view the session. They cannot enter input or change the session settings. Changes to a shared session are not automatically seen by users viewing the session. The browser's refresh button must be used to see the latest changes.

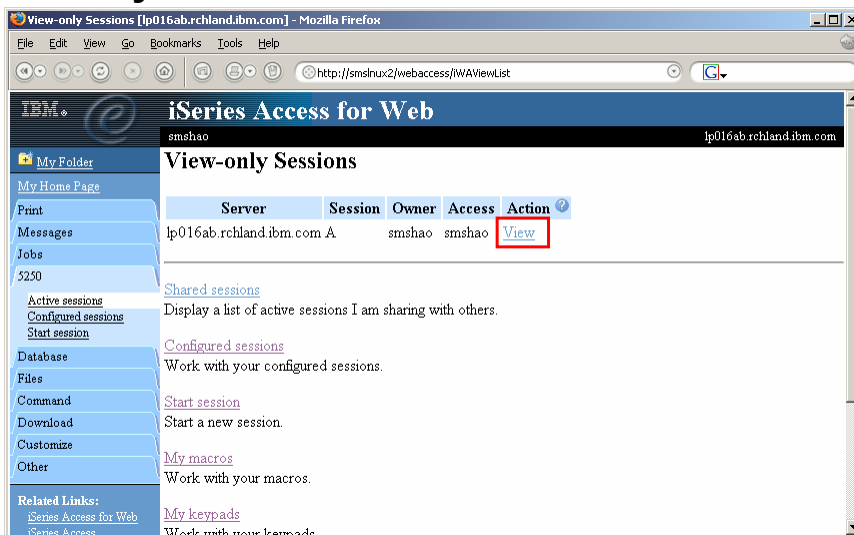
Sharing an Active Session



View-only Sessions



View-only Session List



View-only Session

Jobs

5250

Active sessions

Configured sessions

Start session

Opt	Subsystem/Job	User	Type	CPU %	Function	Status
-	BLDSHIPSS	QSYS	SBS	.0		DEQW
-	RCBLDSHIP	RTANNER	BCH	.0	PGM-QD2BRCV	DEQW
-	BLDTESTSS	QSYS	SBS	.0		DEQW
-	RCBLDTEST	RTANNER	BCH	.0	PGM-QD2BRCV	DEQW
-	QASE5	QSYS	SBS	.0		DEQW
-	ADMIN	QEJBSVR	BCH	.0	PGM-QASESTRSVR	JVAW
-	QASE51	QSYS	SBS	.0		DEQW
-	QBATCH	QSYS	SBS	.0		DEQW
-	QCMN	QSYS	SBS	.0		DEQW

Parameters or command

F3=Exit F5=Refresh F7=Find F10=Restart statistics
 F11=Display elapsed data F12=Cancel F23=More options F24=More keys

Managing Shared Sessions

IBM iSeries Access for Web

smshao Ip016ab.rchland.ibm.com

Active Sessions

Server	Session	Started	Last Accessed	View	Action
Ip016ab.rchland.ibm.com A		9/18/04 2:06:47 PM	9/18/04 2:43:18 PM	Web	Reconnect Stop
	CDT	CDT	CDT		Edit Share Session

View-only sessions

Display a list of active sessions others are sharing with me.

Shared sessions

Display a list of active sessions I am sharing with others.

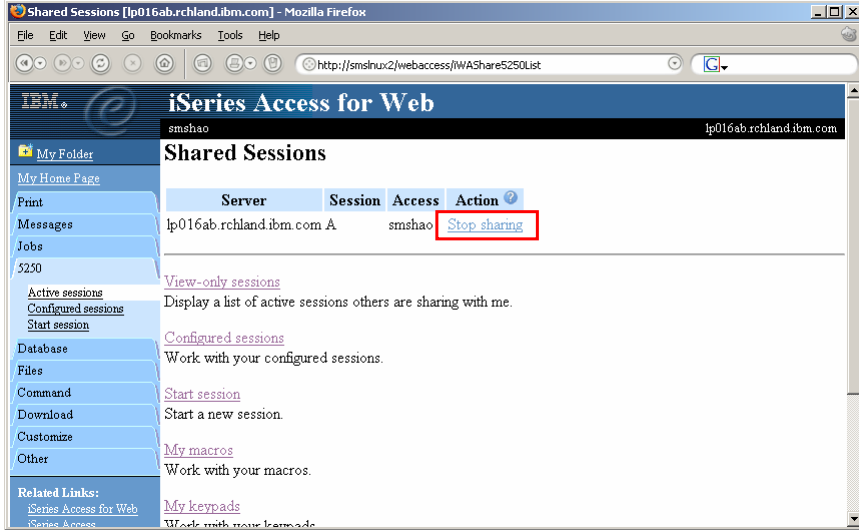
Configured sessions

Work with your configured sessions.

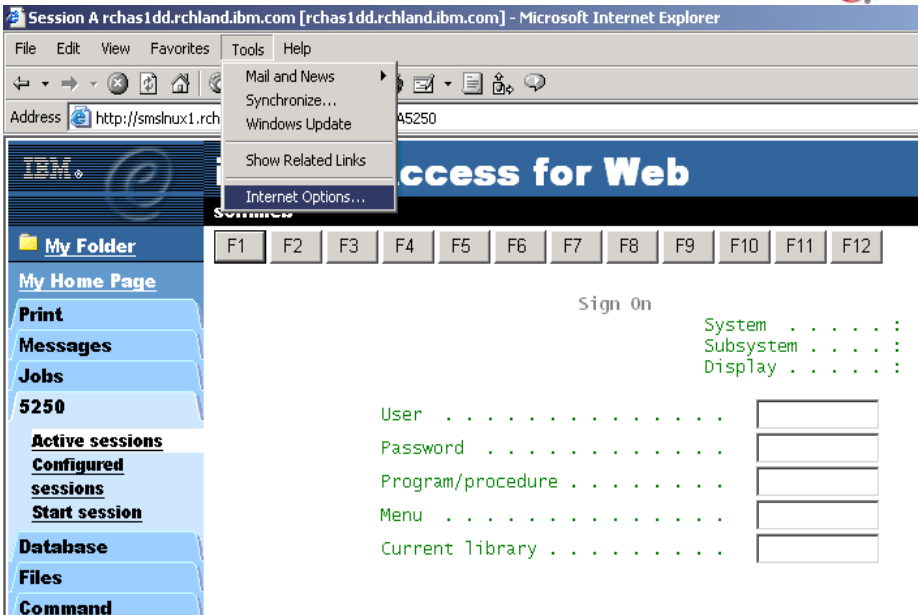
Start session

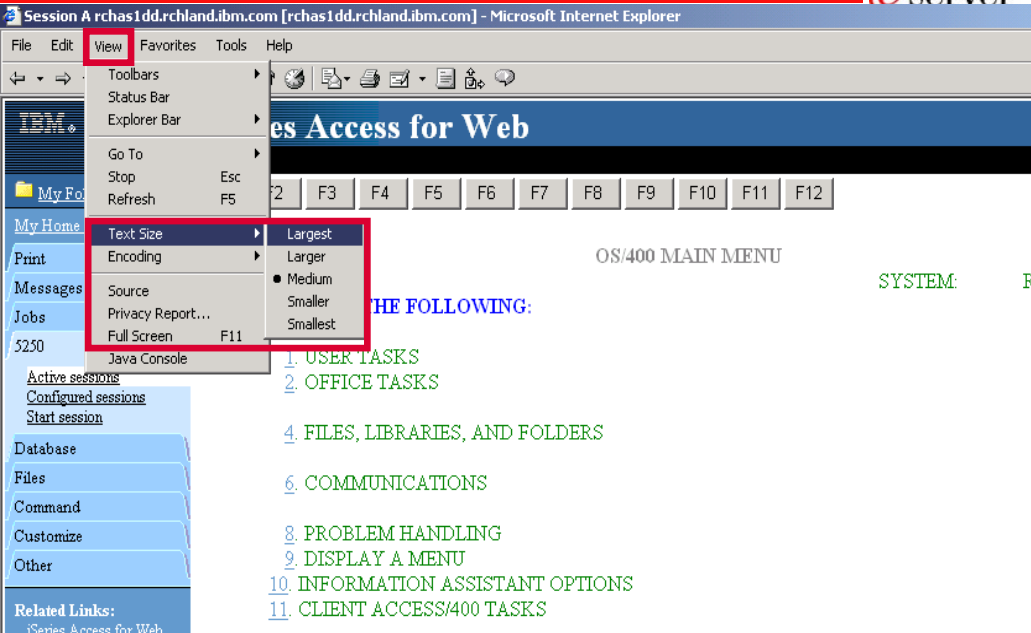
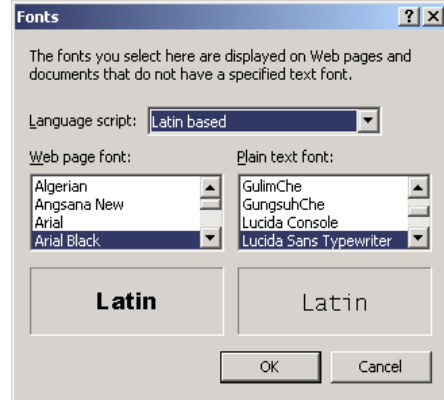
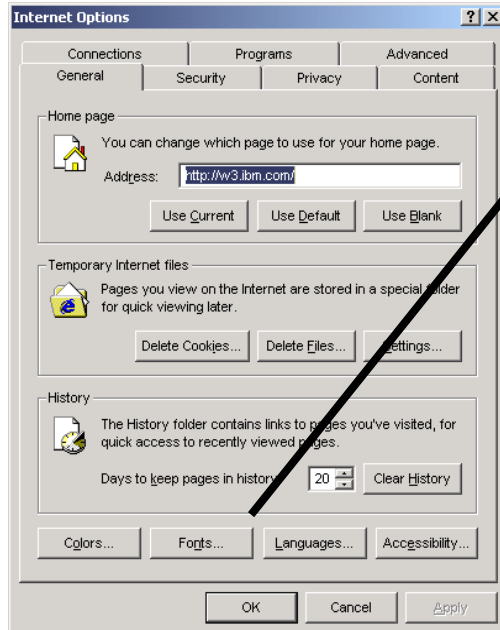
Start a new session.

Shared Session List



Changing Fonts (MS IE)







Changing Fonts via Netscape

@server™

Session A rchas1dd.rchland.ibm.com [rchas1dd.rchland.ibm.com] - Netscape

File Edit View Go Communicator Help

Cut Ctrl+X
Copy Ctrl+C
Paste Ctrl+V

Select All Ctrl+A

Find in Page... Ctrl+F
Find Again Ctrl+G
Search Internet

Preferences...

Messages
Jobs
5250
Active sessions
Configured sessions
Start session
Database
Files
Command
Customize
Other

Related Links:
iSeries Access for Web
Client Access
Operations Navigator

Series Access for Web

Sign On

System
Subsystem
Display

User
Password
Program/procedure
Menu
Current library

RELEASE: V05R01M00
NOTVED: 220603

© 2005 IBM Corporation

iSeries

PAGE 91

ON DEMAND BUSINESS™



Changing Fonts via Netscape...

@server™

Preferences

Category:

- Appearance
 - Fonts
 - Colors
- Navigator
 - Languages
 - Applications
 - Smart Browsing
- Mail & Newsgroups
- Roaming Access
- Composer
- Offline
- Advanced

Fonts Change the fonts in your display

For the Encoding: Western

Variable Width Font: Times New Roman Size: 12

Fixed Width Font: Courier New Size: 10

Sometimes a document will provide its own fonts.

Use my default fonts, overriding document-specified fonts

Use document-specified fonts, but disable Dynamic Fonts

Use document-specified fonts, including Dynamic Fonts

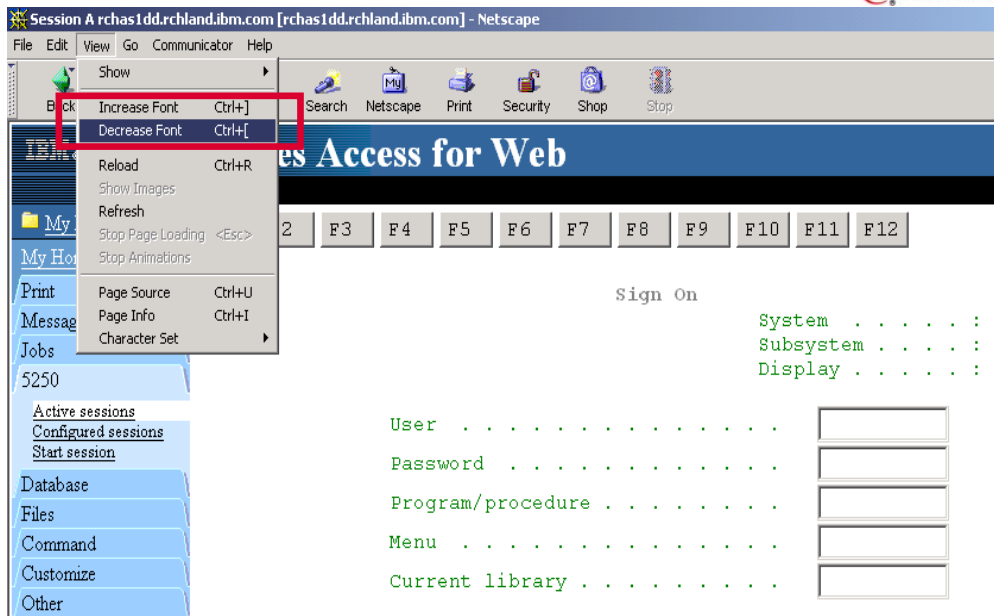
OK Cancel Help

© 2005 IBM Corporation

iSeries

PAGE 92

ON DEMAND BUSINESS™

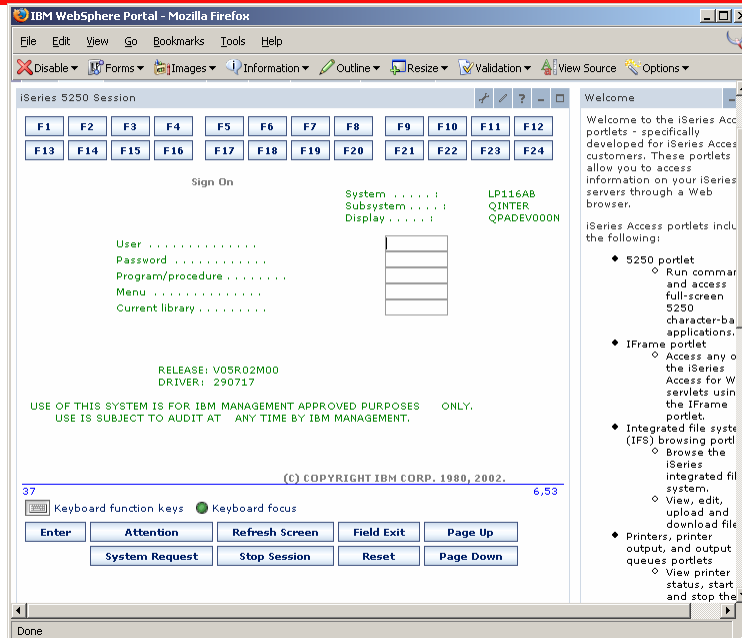


Notes: Changing Font and text size

The browsers provide the means for changing the font and size of the characters on the display



5250 and Portal Server



© 2005 IBM Corporation



PAGE 95



Things to know

Because 5250 session implemented using HTML, considerations to be aware of

- Not full-function emulator
- Not intended to replace full function emulators like PC5250, Host On Demand, Host Publisher, etc for purposes of "heads-down" data entry type of operations
- Does not include file transfer from session or host print via print key
- Do not include graphics, EHLAPPI, DDE functionality
- No direction interaction with server, so unsolicited server messages can't be received. (need to request refresh to see break messages)

© 2005 IBM Corporation



PAGE 96

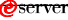




Trademarks and Disclaimers

© IBM Corporation 1994-2005. All rights reserved.
References in this document to IBM products or services do not imply that IBM intends to make them available in every country.

The following terms are trademarks of International Business Machines Corporation in the United States, other countries, or both:

AS/400	e-business on demand	OS/400
AS/400e	IBM	i5/OS
eServer 	IBM (logo)	
	iSeries	

Rational is a trademark of International Business Machines Corporation and Rational Software Corporation in the United States, other countries, or both.
Java and all Java-based trademarks are trademarks of Sun Microsystems, Inc. in the United States, other countries, or both.
Microsoft, Windows, Windows NT, and the Windows logo are trademarks of Microsoft Corporation in the United States, other countries, or both.
Intel, Intel Inside (logos), MMX and Pentium are trademarks of Intel Corporation in the United States, other countries, or both.
UNIX is a registered trademark of The Open Group in the United States and other countries.
SET and the SET Logo are trademarks owned by SET Secure Electronic Transaction LLC.
Other company, product or service names may be trademarks or service marks of others.

Information is provided "AS IS" without warranty of any kind.

All customer examples described are presented as illustrations of how those customers have used IBM products and the results they may have achieved. Actual environmental costs and performance characteristics may vary by customer.

Information concerning non-IBM products was obtained from a supplier of these products, published announcement material, or other publicly available sources and does not constitute an endorsement of such products by IBM. Sources for non-IBM list prices and performance numbers are taken from publicly available information, including vendor announcements and vendor worldwide homepages. IBM has not tested these products and cannot confirm the accuracy of performance, capability, or any other claims related to non-IBM products. Questions on the capability of non-IBM products should be addressed to the supplier of those products.

All statements regarding IBM future direction and intent are subject to change or withdrawal without notice, and represent goals and objectives only. Contact your local IBM office or IBM authorized reseller for the full text of the specific Statement of Direction.

Some information addresses anticipated future capabilities. Such information is not intended as a definitive statement of a commitment to specific levels of performance, function or delivery schedules with respect to any future products. Such commitments are only made in IBM product announcements. The information is presented here to communicate IBM's current investment and development activities as a good faith effort to help with our customers' future planning.

Performance is based on measurements and projections using standard IBM benchmarks in a controlled environment. The actual throughput or performance that any user will experience will vary depending upon considerations such as the amount of multiprogramming in the user's job stream, the I/O configuration, the storage configuration, and the workload processed. Therefore,

no assurance can be given that an individual user will achieve throughput or performance improvements equivalent to the ratios stated here.

Photographs shown are of engineering prototypes. Changes may be incorporated in production models.