



Session: 45CK - 470021

# iSeries. mySeries.

## iSeries Access for Web runs in a Portal

*Schuman Shao*

[Smshao@us.ibm.com](mailto:Smshao@us.ibm.com)

*IBM Rochester*

© Copyright IBM Corporation, 2004. All Rights Reserved.  
This publication may refer to products that are not currently  
available in your country. IBM makes no commitment to make  
available any products referred to herein.

**iSeries. mySeries.**



## Why Portal

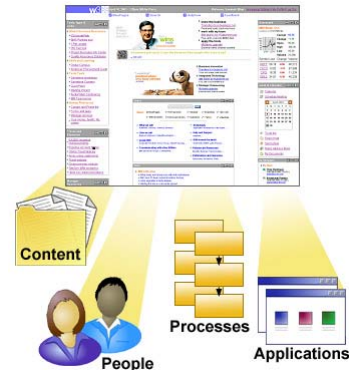
- Single point of entry for backend systems and applications
- Integrate various data sources and applications into one user experience
- Single sign on
  - May not wish to grant user access to backend systems
    - Access to data without granting access to system
- Collaborate with remote sites and users
- Provide e-business experience to customers, business partners and employees

© 2004 IBM Corporation

**iSeries. mySeries.**

## Portal Definition

- Portal - Single Point of Personalized Interaction with Applications, Content, Processes and People
- By definition, a portal should provide
  - **Single sign-on**
  - **Common presentation**
  - **Application and information integration**
  - **Collaborative capabilities**
  - **Personalization and customization**
  - **A framework for Web Services**
  - **Extension to pervasive devices**
- Resulting in....
  - **Improved employee productivity = B2E Portal**
  - **Improved Partner relationships = B2B Portal**
  - **Increased customer loyalty = B2C Portal**



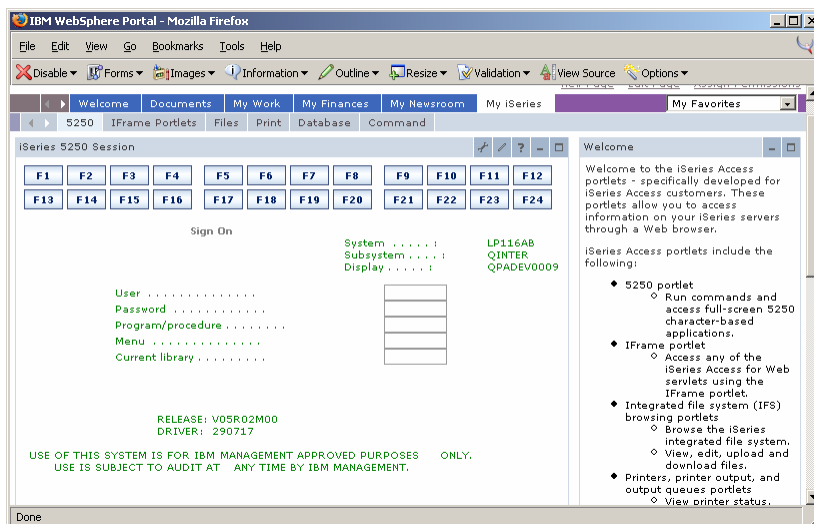
## iSeries Portal Offerings

- Express
  - WAS 5.0.2 PME
  - Portal Server
  - Out-of-the-box portlets
  - Collaboration services API
  - Portal toolkit
  - WebSphere Studio Site Developer
  - Portal Document Manager
  - Productivity portlets
  - IBM Directory Server
- Express Plus
  - Express
  - Sametime
  - Quickplace
  - Domino
  - Collaboration Center

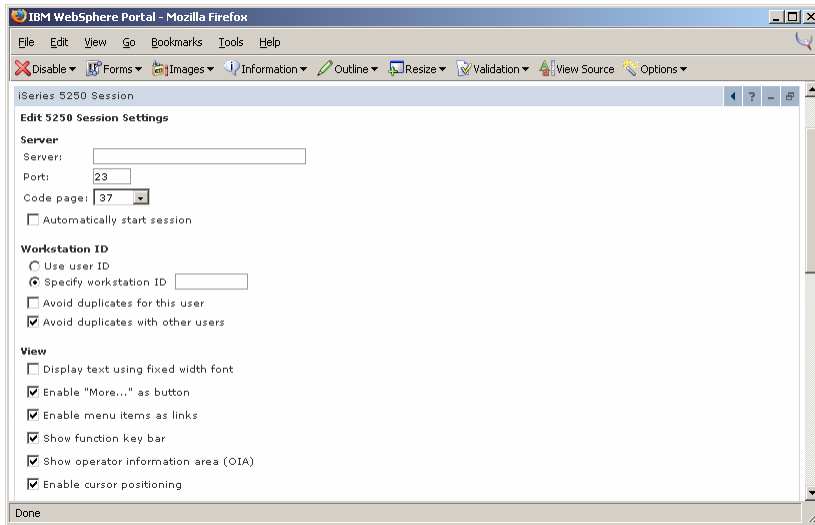
## iSeries Access for Web Portlets

- New Portlets
  - GA
    - 5250
    - iFrame
  - PTF
    - File
    - Print
    - Database
    - Command
    - Credential
- iSeries Access for Web CL commands support Portal Server instances
  - Configure “My iSeries” pages

## Portlets: 5250



## Portlets: Edit 5250 Settings



## Portlets: iFrame

- Inline frames – iFrame
  - Each iFrame window displays content from a URL
  - Good way to leverage iSeries Access for Web servlets



## Portlets: iFrame

Printer Output for smshao

File Name	User Data	Creation Date/Time	Pages Per Copy	Copies	Status	Action	User	Job Name	Job Numl
QPJOBLOG	QZDASOINIT	3/31/04 9:34 AM	2	1	Ready	<a href="#">Work with</a> <a href="#">View</a> <a href="#">View as</a> <a href="#">View PDF</a>	SMASHAO	QPRTJOB	8773
QPJOBLOG	QZDASOINIT	3/31/04	2	1	Ready	<a href="#">Work with</a>	SMASHAO	QPRTJOB	8773

Run SQL

SQL Statement

Done

Directory Contents /

[Copy Files to Server](#)

© 2004 IBM Corporation

iSeries. mySeries.



## Portlets: Edit iFrame Settings

Task

iSeries Access for Web URL interface:

- Create SQL Request [IWADBRunSQL]
- 5250
- List Active Sessions [IWAActiveSessions]
- List Configured Sessions [IWAConfiguredSessions]
- List Macros [IWAMyMacros]
- List Shared Sessions [IWAShare5250List]
- List View-only Sessions [IWAViewList]
- Start Configured Session [IWA5250]
- Start Default Session [IWA5250]
- Start Session [IWAStartSession]

Command

- List Saved Commands [IWACommandList]
- Prompt Command [IWACommandPrompter]
- Run Command [IWACommand]
- Search for Commands [IWACommandSearch]

Customize

- List Preference Categories [IWACustomize]

Database

- Create Copy Data Request [IWADBUpload]
- Create SQL Request [IWADBRunSQL]
- Create SQL Request using Wizard [IWADBSQLWizard]

© 2004 IBM Corporation

iSeries. mySeries.

## Portlets: File

- File viewer portlet
  - Display file content from IFS
    - Html, text, binary files
  - Good for displaying static information to users
- File list portlet
  - List and navigate IFS
  - Send file path to other file cooperative portlets
- File list – viewer
  - Display content of the file sent from file list portlet
- File list – editor
  - Edit text file sent from file list portlet

## Portlets: File

The screenshot displays a web browser window titled "IBM WebSphere Portal - Mozilla Firefox". The browser's address bar shows the URL "http://localhost:9080/portal/publish". The page content is divided into two main portlets:

- iSeries File List:** This portlet shows a directory listing for the path "/ portal / publish". It includes a "Refresh" button and a table of files. The table has columns for Name, Size (bytes), Type, and Modified. The files listed are:
 

Name	Size (bytes)	Type	Modified
<a href="#">aaw.exe</a>	892753	File	4/6/04 12:59:13 PM
<a href="#">companvnews.html</a>	188	File	4/8/04 12:27:52 PM
<a href="#">fixed.html</a>	1191	File	10/21/03 10:50:41 AM
<a href="#">menu.html</a>	3602	File	3/5/04 3:04:41 PM
<a href="#">gcustcdt.xls</a>	18432	File	10/21/03 11:11:43 AM
<a href="#">test.html</a>	6520	File	3/8/04 1:00:10 PM
<a href="#">test.pdf</a>	19024	File	10/21/03 2:33:58 PM

 Below the table is a "Copy File to Server" section with a "File:" input field, a "Browse..." button, a "Replace if exists" checkbox, and a "Copy to Server" button.
- iSeries File List - Viewer:** This portlet contains the instruction: "Use iSeries File List or other cooperative portlets to select a file to view."
- iSeries File List - Editor:** This portlet contains the instruction: "Use iSeries File List or other cooperative portlets to select a file to edit."

## Portlets: Print

- Printer output portlet
  - List printer output for a user or output queue
    - Output queue may be set by printers or output queues portlet
  - Manage printer output (hold/release, print next, delete)
  - Send printer output identifier to printer output viewer portlet
- Printer output – viewer portlet
  - Display printer output sent from printer output portlet as PDF
- Printers portlet
  - List printers on iSeries server
  - Send printer queue name to printer output portlet
- Output queues portlet
  - List output queues on iSeries server
  - Send output queue name to printer output portlet

## Portlets: Print

The screenshot shows the IBM Websphere Portal interface in Mozilla Firefox. It features two main portlets:

**iSeries Printer Output**

This portlet displays a table of printer output jobs. The table has columns for Actions, File Name, Status, User Data, User, Job Name, Job Number, File Number, Creation Date/Time, and Pages Per Cop. The data shown is as follows:

Actions	File Name	Status	User Data	User	Job Name	Job Number	File Number	Creation Date/Time	Pages Per Cop
[Icons]	QPJOBLOG	*READY	QZDASOINIT	SMSHAO	QPRJOB	877306	1	3/31/04 9:34 AM	
[Icons]	QPJOBLOG	*READY	QZDASOINIT	SMSHAO	QPRJOB	877306	2	3/31/04 9:34 AM	
[Icons]	QPJOBLOG	*READY	QZDASOINIT	SMSHAO	QPRJOB	877306	3	3/31/04 9:34 AM	
[Icons]	QPJOBLOG	*READY	QZDASOINIT	SMSHAO	QPRJOB	877306	4	4/6/04 9:51 AM	
[Icons]	QPRINT	*READY		SMSHAO	QIWADPSTR	886069	1	4/6/04 1:02 PM	

**iSeries Printers**

This portlet displays a table of available printers. The table has columns for Printer, Status, Description, Output Queue, and Actions. The data shown is as follows:

Printer	Status	Description	Output Queue	Actions
#JRHPEF	Unavailable	PDF Printer to test BIDI enablement	QUSRSYS/#JRHPEF	[Icons]
BIDIPDF	Unavailable	???????	QUSRSYS/BIDIPDF	[Icons]

## Portlets: Database

- Database table portlet
  - List database table information
  - Optionally
    - Add record
    - Update record
    - Delete record
- Dynamic SQL portlet
  - Perform dynamic SQL request
- SQL query portlet
  - Perform pre-configured SQL request
  - Parameter marker support
    - Create form to prompt for user input

## Portlets: Database

IBM WebSphere Portal - Mozilla Firefox

File Edit View Go Bookmarks Tools Help

Disable Forms Images Information Outline Resize Validation View Source Options

Add Record Refresh

Showing 1 - 5 of 12 Page 1 of 3 Jump to page: 1

Actions	CUSNUM	LSTNAM	INIT	STREET	CITY	STATE	ZIPCOD	CDTLMT	CHGCOD	BALDUE	CTDUE
	938472	Henning	G K	4859 Elm Ave	Dallas TX		75217 5000		3	37.00	0.00
	839283	Jones	B D	218 NW 135 St	Clay NY		13041 400		1	100.00	0.00
	392859	Vine	S S	PO Box 79	Broton VT		5046 700		1	439.00	0.00
	938485	Johnson	J A	3 Alpine Way	Helen GA		30545 9999		2	3987.50	33.50
	397267	Tyron	W E	13 Myrtle Dr	Hector NY		14841 1000		1	0.00	0.00

Showing 1 - 5 of 12 Page 1 of 3 Jump to page: 1

iSeries: Dynamic SQL

SQL statement:  Run SQL

iSeries: SQL Query

Database Query

Minimum balance:

Run Query

Done



## Portlets: Single Signon

IBM WebSphere Portal - Mozilla Firefox

File Edit View Go Bookmarks Tools Help

Disable Forms Images Information Outline Resize Validation View Source Options

My Commands

**Edit Portlet Settings**

**Server**  
Server: lp116ab.rchland.ibm.com

**Authentication**

Use credential specific to this portlet window  
User:   
Password:   
Confirm password:

Use credential set with iSeries Credentials portlet  
Slot name: LP116AB

Use system shared credential set by administrator  
Slot name: admin-boguz

Use WebSphere Portal identity

**General**  
Window title: My Commands

Show server

Done

## Portlets: Single Signon Settings

- **Use credential specific to this portlet window**
  - Credential settings only valid for the portlet window
- **Use credential set with iSeries Credentials portlet**
  - Credential settings created and maintained with iSeries Credentials portlet
  - Credential settings are valid for all portlet windows for a particular user
- **Use system shared credential set by administrator**
  - Credential settings created and maintained with the portal server credentials portlet
  - Credential settings are valid for all users and all portlet windows
- **Use authenticated WebSphere credential**
  - Use Identity Token support to map from WebSphere credential to OS/400 credential
  - Requires JCA connector, EIM and LDAP



## Portal Demo

© 2004 IBM Corporation

**iSeries. mySeries.**



## Trademarks and Disclaimers

© IBM Corporation 1994-2004. All rights reserved.

References in this document to IBM products or services do not imply that IBM intends to make them available in every country.

The following terms are trademarks of International Business Machines Corporation in the United States, other countries, or both:

AS/400	e-business on demand	OS/400
AS/400e	IBM	IS/OS
eServer	IBM (logo)	
	iSeries	

Rational is a trademark of International Business Machines Corporation and Rational Software Corporation in the United States, other countries, or both.

Java and all Java-based trademarks are trademarks of Sun Microsystems, Inc. in the United States, other countries, or both.

Microsoft, Windows, Windows NT, and the Windows logo are trademarks of Microsoft Corporation in the United States, other countries, or both.

Intel, Intel Inside (logos), MMX and Pentium are trademarks of Intel Corporation in the United States, other countries, or both.

UNIX is a registered trademark of The Open Group in the United States and other countries.

SET and the SET Logo are trademarks owned by SET Secure Electronic Transaction LLC.

Other company, product or service names may be trademarks or service marks of others.

Information is provided "AS IS" without warranty of any kind.

All customer examples described are presented as illustrations of how those customers have used IBM products and the results they may have achieved. Actual environmental costs and performance characteristics may vary by customer.

Information concerning non-IBM products was obtained from a supplier of these products, published announcement material, or other publicly available sources and does not constitute an endorsement of such products by IBM. Sources for non-IBM list prices and performance numbers are taken from publicly available information, including vendor announcements and vendor worldwide homepages. IBM has not tested these products and cannot confirm the accuracy of performance, capability, or any other claims related to non-IBM products. Questions on the capability of non-IBM products should be addressed to the supplier of those products.

All statements regarding IBM future direction and intent are subject to change or withdrawal without notice, and represent goals and objectives only. Contact your local IBM office or IBM authorized reseller for the full text of the specific Statement of Direction.

Some information addresses anticipated future capabilities. Such information is not intended as a definitive statement of a commitment to specific levels of performance, function or delivery schedules with respect to any future products. Such commitments are only made in IBM product announcements. The information is presented here to communicate IBM's current investment and development activities as a good faith effort to help with our customers' future planning.

Performance is based on measurements and projections using standard IBM benchmarks in a controlled environment. The actual throughput or performance that any user will experience will vary depending upon considerations such as the amount of multiprogramming in the user's job stream, the I/O configuration, the storage configuration, and the workload processed. Therefore, no assurance can be given that an individual user will achieve throughput or performance improvements equivalent to the ratios stated here.

Photographs shown are of engineering prototypes. Changes may be incorporated in production models.

© 2004 IBM Corporation

**iSeries. mySeries.**