



IBM eServer iSeries

Session: 402066

Administration of iSeries Access for Windows Advanced Tips

Carole A Miner
i5/iSeries Client Integration
Rochester, Mn
cminer@us.ibm.com

© Copyright IBM Corporation, 2005. All Rights Reserved.
This publication may refer to products that are not currently
available in your country. IBM makes no commitment to make
available any products referred to herein.

why "i"? it's simple.

IBM eServer iSeries



Agenda

Administrative tools to assist you in managing your network PCs

- V5R3 changes
- iSeries Access for Windows Install/Upgrade
 - Check Service Level
 - Install and Service Pack Tips
- Install Tools
 - Tailored Install
 - iSeries Access for Web Download
 - Silent Install
- Microsoft Policies
- iSeries Navigator Application Administration



© 2005 IBM Corporation

why "i"? it's simple.

Administration

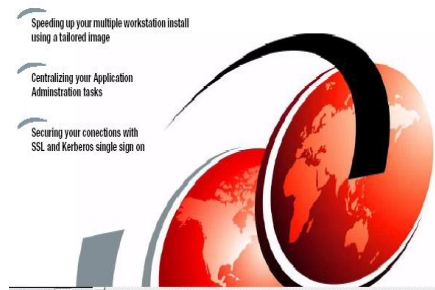
New Redbook for administering
iSeries Access for Windows
users

- **SG24-6939**
- Available Feb 2004

Go out to iSeries Access for
Windows web page

- [www.ibm.com/eserver/series/
access/windows](http://www.ibm.com/eserver/series/access/windows)
- Click on New Redbooks link

iSeries Access for Windows V5R2 Hot Topics: Tailored Images, Application Administration, SSL, and Kerberos



V5R3 changes

- iSeries Access for Windows (5722-XE1, V5R3) will not install on Windows 95, 98, Me
 - However, you can use 5722-XE1 (V5R2) client for Windows 98 or ME PCs and connect to OS/400 V5R3 or earlier
 - You can use 5722-XE1 (V5R1) client for Windows 95 PCs and connect to OS/400 V5R3 or earlier
 - Note: The 5722-XE1 (V5R2) client will install on Windows 95 PCs if you first go to Microsoft website and install the TCP/IP Upgrade on your Windows 95 PCs. (unsupported environment)
- Migration from AS/400 Client Access for Windows 95/NT (5763-XD1, V3R2) is no longer supported
- Upgrading from AS/400 Client Access Express (5722-XE1, V4R4) is no longer supported

Installing, Updating, Managing



iSeries Licensed Program – Product No. 5722-XE1

Three versions currently supported:
V5R1M0, V5R2M0, V5R3M0

iSeries Access installed in iSeries IFS

iSeries Access client Install Image placed in IFS in:

- \QIBM\ProdData\Access\Windows\Install\Image

iSeries Access Service Pack placed in IFS in:

- V5R1 - Service Pack PTFs saved in the main install image--no extra reboot!
- But is likely to not be latest Service Pack available



iSeries Access installs and services other products as part of its install from IFS

- SSL Encryption Program (V5R3), iSeries Toolbox for Java, Java Runtime Environment, iSeries Navigator, EZ Setup



iSeries Access can be used to install and service other code placed in IFS:

- iSeries Navigator Plug-ins, Add-ins



PC CD also shipped with the product

- V5R2 - Can create Customized Install CD images



IBM eServer iSeries

iSeries NetServer

Shared Directory

iSeries NetServer

If installs are done from QIBM directory, end users will automatically get new service pack code and future upgrades when new code placed on iSeries

`\\QIBM\ProdData\Access\Windows\Install\Image`

- QIBM ships with a "read only" share access
- Thus, all users can access iSeries Access for Windows code on the iSeries

© 2005 IBM Corporation

why "i"? it's simple.

IBM eServer iSeries

Service

Strategic way to handle service for end-users

- Automatic Check Service Level
- Check Service Level can also service:
 - iSeries Navigator Plug-ins
 - Encryption Program (SSL)

Note:

In example above, there was a Mapped Drive to W:\<iSeries>QIBM, so iSeries Access for Windows filled in the rest of the address.

Could also use service Source Directory of \\<iSeries>\QIBM to avoid assigning a persistent drive letter mapping

© 2005 IBM Corporation

why "i"? it's simple.

Install and Service Pack Tips

Make sure you have the latest Service Pack before rolling out new installs

- Roll out new clients from merged image and get new release and latest service pack in one step
 - Merged install image eliminates the need for an extra reboot
- Save disk space on PCs
- If a Service Pack has been well-tested, and you are confident in it, you can have your end-users install it without enabling service pack uninstall.
 - This eliminates the need for an **Archive** directory containing files from the previous service level.
 - RMVPTF and reinstall from install image could be used to get back to the prior service level if necessary.



FTP Service Packs for Testing

Suggest using FTP download for validation testing

- Don't place downloaded Service Pack in the iSeries LPP (QIBM directory, ie, \InstallImage) because:
 1. It will interfere with APYPTF
 2. Check Service Level (by default) looks in the QIBM directory for updates
- Place in another directory in the iSeries IFS or on another server or on single PC

http://www.ibm.com/eserver/series/access/casp.htm

Latest Service Packs for Supported Releases

- To see service packs for every release, refer to [Service Pack History for All Releases](#).
- For problems downloading a service pack, [click here](#).
- For support information on iSeries Access and the Microsoft Windows operating systems, [click here](#).

iSeries Access for Windows (Client Access Express) (5722-341) Release Level	Latest Service Pack PTF Number	Server Maintenance	Date PTF was Available	Installed File Date	Target for Next Service Pack
VSR3M0	SI18651 replaces SI18398. SI18651 contains fixes for Management Central and iSeries Navigator. If you have already installed SI18398, refer to the readme.txt for SI18651.	Refer to Server Notes	June 29, 2005	06/05/2005	September 30, 2005
VSR2M0	SI16915	Refer to Server Notes	May 12, 2005	08/10/02	November 18, 2005
VSR1M0	SI11806	Refer to Server Notes	April 30, 2004	05/08/01	Not in plan

Problems downloading a Service Pack?

<http://www.ibm.com/eserver/series/access/casp.htm>

Get fixes from IBM

Order Service Packs through normal IBM channel and install on the iSeries

iPTF

- **Internet PTF** - will send you a CD because image is too big to download over Internet.

SNDPTFORD

- **Send PTF Order** - will send you a CD because image is too big to download over Internet

CUMTAPES

- Service Pack included on CUMTAPES too, but may not be the latest one available



Model	PTF	Refer to	Release	Availability	End of Support
V5R3M0	SI18651	Refer to Server Notes	June 29, 2005	06/05/2005	September 30, 2005
V5R2M0	SI16915	Refer to Server Notes	May 12, 2005	06/10/02	November 18, 2005
V5R1M0	SI11006	Refer to Server Notes	April 30, 2004	05/06/01	Not in plan

Problems downloading a Service Pack?

Try one of these:

- Review the Software Knowledge Base Article: [Problems Downloading Files from the FTP Site, including Client Access Service Packs.](#)
- Order the PTF to install on your iSeries:
 - Use SNDPTFORD to order the PTF (product 5722XE1) and install it on your iSeries. Since the service pack PTFs generally exceed the size limit to be sent electronically, you can receive the PTF on media by changing the "Delivery Method" (DELIVERY) parameter on SNDPTFORD to "ANY." (The parameter defaults to "LINKONLY.")
 - Use Internet PTF Delivery (PTF). To find out about this service and the requirements, go to <http://www.ibm.com/eserver/iseries/support/> and from the left menu, select "Fixes".

New Feature in OS/400 V5R2...

Use IFS as a Virtual Optical Device

- You can obtain a Service Pack CD electronically and place it directly in the IFS in a Virtual Optical Device (just like a real iSeries Optical Device)
- You can then download a CD image of the PTF and make your IFS look like a CD Drive
- You can install the PTF from this CD image thus eliminating the need to either use:
 - iPTF
 - SNDPTFORD

- Install the Operations Navigator plug-in
 - Required one time only if you choose to download using Operations Navigator
- Download the self-extracting .exe file
 - Run the .exe file and install the files in the default directory:
 - jvopnav\com\ibm\as400\opnav
- Consider using software managers called "download managers" to allow you to resume interrupted or failed downloads, such as:
 - GetRight®
 - Go!Zilla
 - Netzip
 - SmartDownload
- For more information, go to:
 - <http://www-912.ibm.com/supporthome.nsf/document/27321011>

This option of ordering the official Service Pack PTF may be a more attractive alternative than downloading the Service Pack PTF from the iSeries Access webpage

Install and Service Pack Tips

Keep end-users from installing a service pack until you are ready

- Text file SP.TXT placed in the service pack image directory can prevent anyone from installing the service pack until you are ready
 - 'N' as the 1st character in the file prevents install
 - 'Y' or no SP.TXT file at all will allow the install

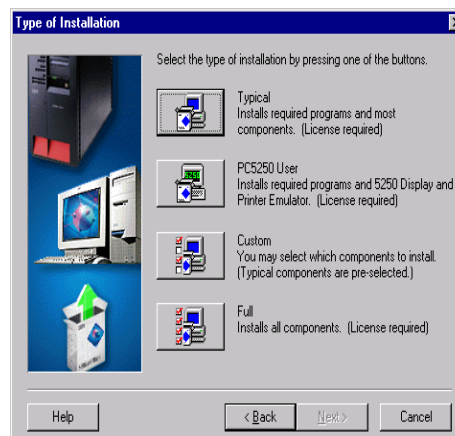
Second text line can contain a message to users that will appear during Check Service Level
- Same method used to prevent all end-users from upgrading via Check Service Level to a new release
- Additional control values for a merged image:
 - 'U' allows an upgrade, but stops a service pack
 - 'S' allows a service pack, but stops an upgrade



Documented in User's Guide - look in Index for 'SP'

Installation Options

- **Typical**
 - Not best option, as much of iSeries Navigator gets installed
- **PC5250 User**
 - Only 5250 emulation installed
- **Custom**
 - Best option, but most confusing
- **Full**
 - Installs everything
 - Has new meaning with Tailored Install function



Installation Types

1. **New installation of iSeries Access for Windows**
 - If done from the iSeries using iSeries NetServer, iSeries Access for Windows automatically sets end-user up properly for later service packs and upgrades
2. **Upgrade Install**
 - From one release of iSeries Access for Windows to the next release
 - Intend to always support N-2 to N
 - Default is to upgrade to new release with same set of components
 - Can add additional components during upgrade
 - Can remove existing components during upgrade process
3. **Re-Install same release**
 - Functionally very similar to upgrade install
 - Will install over a service pack level, returning end-user to same level as installation image

Install and Service Pack Tips

iSeries Netserver Guest User profile

- For users that normally do not have access to this iSeries - but you wish to give them access to client code or service packs



iSeries NetServer Advanced Next Start - Commondenver

IBM iSeries Support for Windows Network Neighborhood

Guest user ID:

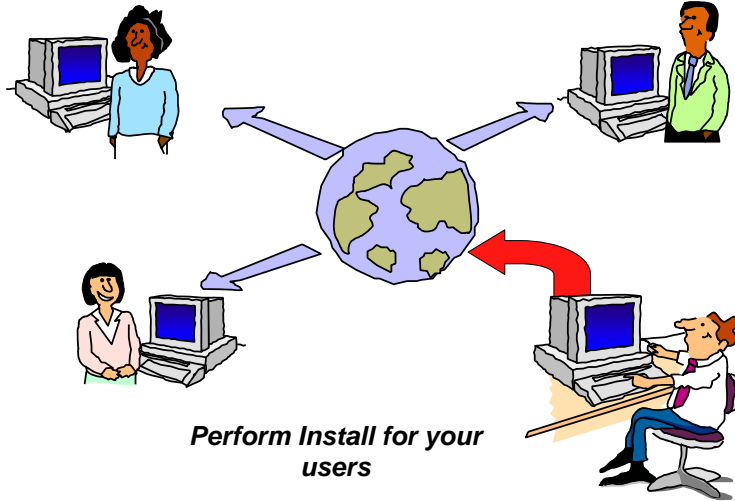
Coded character set ID:

Idle time-out for inactive sessions:

Disconnect sessions:

Leave sessions connected

Browsing announcement interval:



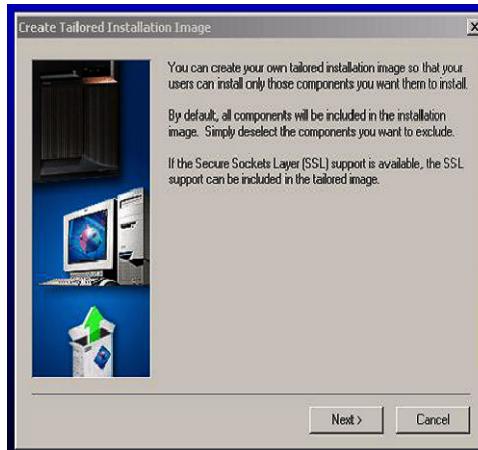
Tailored Install

Would you like to control which iSeries Access for Windows components your users install?



You can use **Tailored Install** to:

- Create a custom installation image by excluding the unwanted components from a master installation image.
- Use this customized installation image for installations across your network
- Users can easily install iSeries Access functions by **selecting a single option**



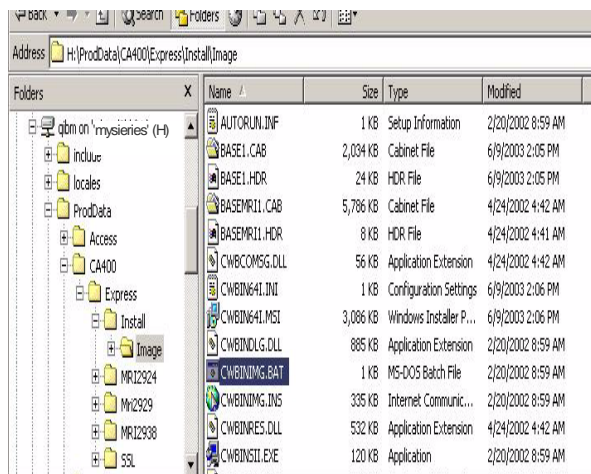
Steps to set up your own 'Tailored' Install

Find Tailored Install Wizard

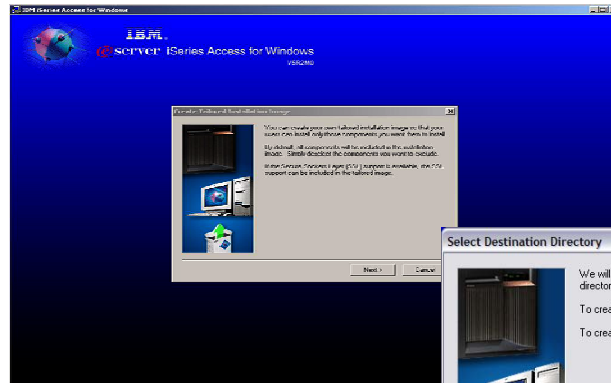
- Stored in Client Access folder

QIBM->
ProdData->
CA400->
Express->
Install->
Image->

- Start **Cwbinimg.bat** program



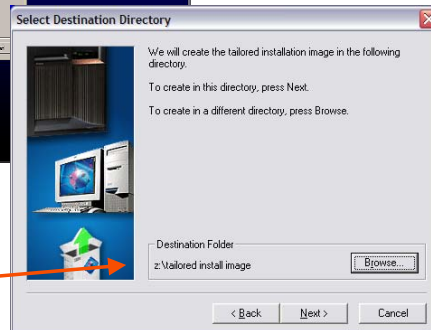
Run Wizard to create a Tailored Install Image



Run Tailored Install wizard

Select where you want this saved

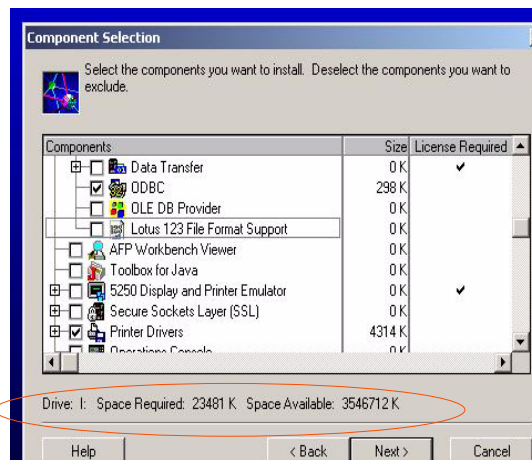
- Could be in iSeries IFS or PC server...



Example

Only want to provide ODBC and Printer Drivers for some of your users

- Build tailored install that only enables end users to install only ODBC and Printer drivers
- Deselect all items you don't want users to use. Program will tell you if there is a pre-req you must install
- Note: this option requires 23MB of space.

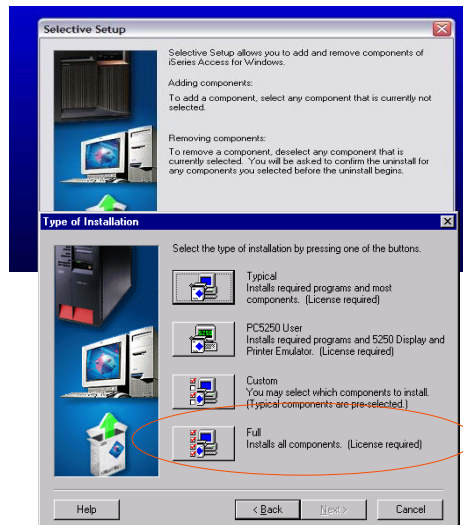


Use Full Install option

Users now simply:

- Point to Folder where your Tailored Install is
- Click on 'Setup.exe' to start the iSeries Access for Windows Install Program
- Then simply select 'Full' install
 - Users get only the functions you created in the Tailored Install

Note: If stored on iSeries, can use i5/OS authorities to restrict users or groups from install images that they should not be installing/upgrading from



Servicing the Tailored Install Image

Problem

- When you create the Tailored Install, the Program Temporary Fixes (PTFs) in the QIBM directory are also applied to the newly created tailored image.
- However, this tailored installation image is not updated when future PTFs are applied to or removed from the iSeries server
- Because they are in a file unknown to OS/400

Solution

1. You can recreate the Tailored Install image by pointing back at QIBM, re-running Tailored Install, and storing on top of your old image.
2. Go to iSeries Access web site and download PTFFORM. This can be used to your Tailored Image.
 - Only updates to functions in your tailored image will be updated. Thus users will not be able to run Selective Install and get additional Access for Windows functions from that directory.

For information on Tailored Install images see:

- <http://publib.boulder.ibm.com/pubs/html/as400/infocenter.html>
- Find 'iSeries Access'. Then follow path of 'Administration', then 'Installing or migrating multiple PCs', to 'Tailored Install'

PTFFORM

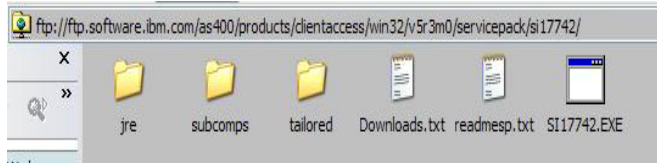
Use PTFFORM to add new Service Pack to Tailored Install image

Level	SI17742				
V5R3M0	Replaces SI17411. If you have installed SI17411, refer to the service pack readme	1 Refer to Server Notes	April 1, 2005	03/04/2005	June 24, 2005
V5R2M0	SI16136	Refer to Server Notes	November 17, 2004	08/09/02	May 13, 2005
V5R1M0	SI11806	Refer to Server Notes	April 30, 2004	05/08/01	Not in plan

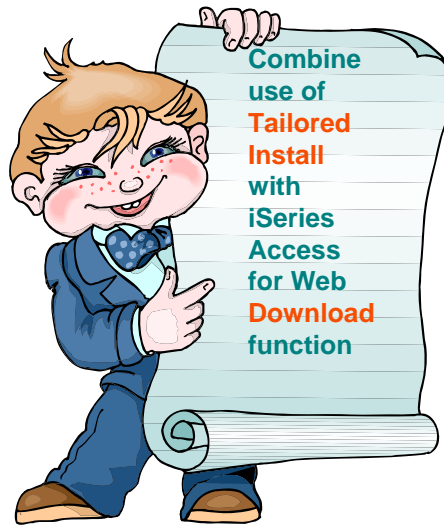


PTFFORM only puts in fixes for code that is contained in Tailored Install image

www.ibm.com/eserver/series/access



2



Downloads – for file/program distribution

<http://<myiseries>/webaccess/iWAPackages>

- Mechanism to distribute files / programs to users
- Administrator can create downloads
- Management functions included for updating downloads and for controlling access to them



Access for Water

Downloads

Name	Description	File	Size	Action
Series Access for Linux (i386)	Series Access for Linux contains a full 32-bit 5250 emulator and an enhanced ODBC driver. For more information see: http://www.ibm.com/eserver/series/access/linux	SeriesAccess-520-1.4.i386.rpm	3,315,790	Download
Series Access for Linux (PPC)	Series Access for Linux contains a full 32-bit 5250 emulator and an enhanced ODBC driver. For more information see: http://www.ibm.com/eserver/series/access/linux	SeriesAccess-520-1.4.ppc.rpm	3,507,997	Download
Series Access for Windows (Database)	Series Access for Windows: ODBC driver, Net provider, and Data Transfer. For more information see: http://www.ibm.com/eserver/series/access/windows	SeriesAccess-DB-5.3.0-SI16496.exe	18,226,118	Download
Series Access for Windows (PC5250)	Series Access for Windows 5250 emulator and print drivers. For more information see: http://www.ibm.com/eserver/series/access/windows	SeriesAccess-PC5250-5.3.0-SI16496.exe	26,613,313	Download
Series Access for Windows (PC5250 and Database)	Series Access for Windows 5250 emulator, print drivers, ODBC driver, Net provider, and Data Transfer. For more information see: http://www.ibm.com/eserver/series/access/windows	SeriesAccess-PC5250-DB-5.3.0-SI16496.exe	35,806,824	Download
Windows AFP Viewer Plug-in	The AFP Viewer plug-in lets you view AFP documents from a Web browser.	app32dm.exe	9,997,972	Download

V5R3 shipped view
Users can download Access for Linux and AFP Viewer Plug-in products

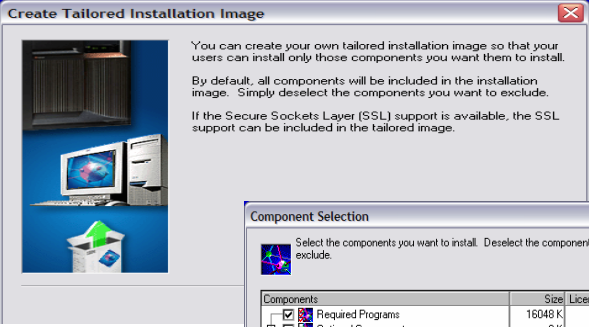
Check this out at <http://iseriesd.dfw.ibm.com/webaccess/iWAHome>,
Userid = BOATADMIN; Password = DEMO2PWD

Example of how you might use this function

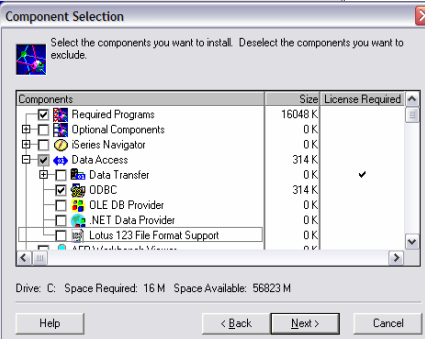
- Scenario
 - I have some users who need the ODBC driver from iSeries Access for Windows. What would be an easy way to make this available?
- Solution
 - Use iSeries Access for Windows to build an install image that contains only the ODBC drive
 - Use iSeries Access for Web to enable users to install it on their PCs



Create Tailored Install Image of ODBC driver



You just used iSeries Access for Windows Tailored Install wizard to capture only the Windows ODBC driver



Components	Size	License Required
<input checked="" type="checkbox"/> Required Programs	16048 K	
<input type="checkbox"/> Optional Components	0 K	
<input type="checkbox"/> iSeries Navigator	0 K	
<input checked="" type="checkbox"/> Data Access	314 K	
<input type="checkbox"/> Data Transfer	0 K	
<input checked="" type="checkbox"/> ODBC	314 K	✓
<input type="checkbox"/> OLE DB Provider	0 K	
<input type="checkbox"/> .NET Data Provider	0 K	
<input type="checkbox"/> Lotus 123 File Format Support	0 K	
<input type="checkbox"/> APD/Workbook Manager	0 K	

Drive: C: Space Required: 16 M Space Available: 56823 M

Buttons: Help, < Back, Next >, Cancel

Use the 'Create Download' feature

- Use iSeries Access for Web **Create Download** to make a file available for distribution
- The file is copied to the server on which iSeries Access for Web is running
- After the download is created, it is added to the Downloads list.



Create Download

Name: ODBC Driver VSR3
 Description: ODBC Driver VSR3
 File: Y:\ODBC\VSQR3.zip

Create Download Details:

- Use Create Download to make a file available for distribution. The file is copied to the server on which iSeries Access for Web is running. After the download is created, it is added to the Downloads list.
- When a download is created, it can only be accessed by the user who created it and by users with *SECADM authority. Use the Work with action from the Downloads list and select the Manage Access link to make the download available to other users.

ODBC now added to Download List

- When a download is created, it can only be accessed by the user who created it and by users with ***SECADM** authority
- Use the **Work with action** from the Downloads list and select the **Manage Access** link to make the download available to other users

Name	Description	File	Size	Action
04_08_03_hwy52.htm			22,737	Download Work with
iSeries Access (386)	iSeries Access for Linux contains a full 5250 emulator and an enhanced ODBC driver. For more information see: http://www.ibm.com/eserver/iseries/access/linux/ .	iSeriesAccess-5.2.0-1.4.i386.rpm	3,315,790	Download Work with
iSeries Access (PPC)	iSeries Access for Linux contains a full 5250 emulator and an enhanced ODBC driver. For more information see: http://www.ibm.com/eserver/iseries/access/linux/ .	iSeriesAccess-5.2.0-1.4.ppc.rpm	3,507,997	Download Work with
ODBC Driver V5R3	iSeries Access for Windows - ODBC Driver	ODBC Driver for iSeries V5R3.zip	14,637,675	Download Work with
PC5250 Emulator	PC5250 Emulator V5.8 (V5R3)	PC5250 Emulator V5R3.zip	38,946,701	Download Work with

Work With Download options

- **Edit Name and Description**
- **Update File**
 - The new file will replace the current file that is available for downloading.
 - The current file will no longer be available to download.
- **Delete**
- **Manage Access**
 - This action enables you to either give or deny access to users.

iSeries Access for Web
cmintr

Work With Download

Name: ODBC Driver V5R3
Description: iSeries Access for Windows - ODBC Driver V5R3
File: ODBC Driver for iSeries V5R3.zip
Size: 14,637,675
Last updated: Jun 28, 2004 9:05:22 PM

Action

- [Edit name and description](#)
- [Update file](#)
- [Delete](#)
- [Manage access](#)

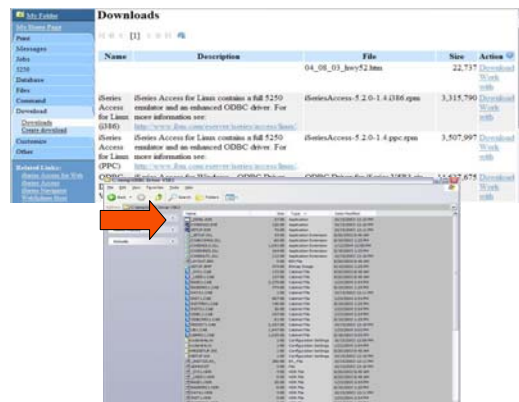
Manage Access to New Download File

- Set up who can access new download file
- Deny Access **defaults** to only the creator of the download can access and manage this download
- Now select the users you wish to access it
 - Can be All Users (***PUBLIC**), groups of users, specific users
- Set who else can manage this download



Download and Install ODBC on Desktop

- If you had originally zipped up the Tailored Install directory using some product like **Install Shield's Package For the Web**, then it would initiate the install for the end user.
- Here I had used **PKZIP for Windows**, so I have to go into the directory and start the install by pressing on **SETUP.EXE**





Silent Install

Can be used for:

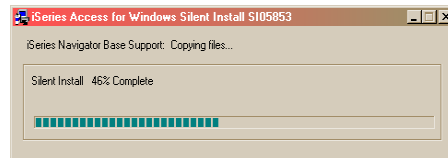
- Initial Install
- Upgrades to a new release
- Service Packs

- A way to restrict the set of initial components that an end user receives
- Allows you to quickly and easily copy duplicate installations across your network
- Eliminates the need for end users to have to respond to any prompts during the installation process
- Can be used for upgrades, selective setup, and service packs. Upgrades and service packs should launch setup.exe from the install source.
 - Selective Setup should launch setup.exe from the PC's ...\\Client Access directory

Silent Install

Silent Install indicator

- Appears in task tray on end-user's PC during silent install
- Silent install failure leaves indicator active
- Double-clicking indicator shows failure point



Really silent!

Silent Install Documentation

Detailed information on Silent Install is on the web in the **IBM iSeries Information Center**

Get there by going to iSeries Access web page at:
www.ibm.com/eserver/iseries/access/windows,
 then select **iSeries Information Center** from sidebar

Or go to:
<http://publib.boulder.ibm.com/pubs/html/as400/infocenter.html>

Search on Silent Install



Using Silent Install

Create a response file

- A response file records the selections made in response to the prompts in the installation process.
- You perform the desired type of install on your PC, recording installation choices into install scripts (.iss files)
 - For example, setup.exe -r -f1C:\MyDir\v5r2v5r3upg.iss

Start the silent installation

- During a silent installation, the setup program will use the response file to get the information necessary to complete the installation
- Schedule or run setup.exe on the end-user PC's with the proper parameters specifying the response file location (or use CheckService Level)
 - For example, setup.exe -s -f1\iSeries\Express\Response\v5r2v5r3upg.iss -f2C:\Temp\v5r2v5r3upg.log

Check the log file return codes to see if your install was successful

- The Log file tracks installation results. You can specify location/name of the Log file
- Silent.txt file in the ...Client Access directory lists the components installed silently and successfully

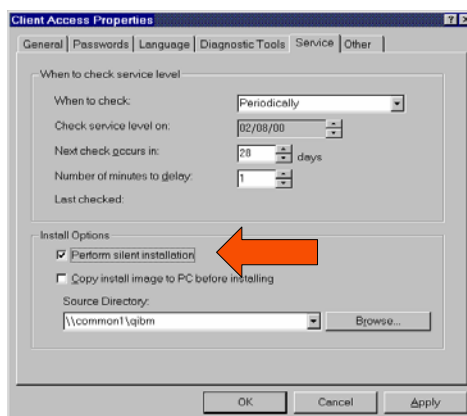
Check Service Level for Silent Installs

Use this for Service Packs and Upgrades

Eliminates the need for confusing command line parameters, but does require specific names for the response files

- SLTSP.ISS - for service packs (This file must reside in the same directory as the service pack image)
- SLTUP.ISS - for upgrades (This file must reside in the same directory as the upgrade image)

- If rebooting automatically, consider using SCHEDCHECK parameter on cwbackver.exe and schedule during the middle of night. Look in online iSeries Access for Windows User's Guide index for cwbackver for more information on the SCHEDCHECK parameter
- If not rebooting automatically, Check Service Level will come out of silent mode and prompt user for reboot



Errors using Silent Install

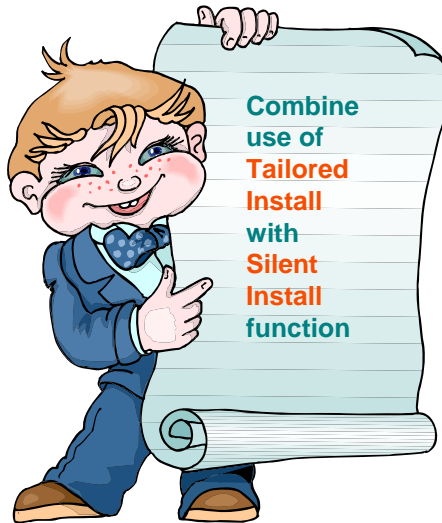
Most silent install errors involve a dialog out of order from what was recorded (-12 return code in silent log)

- The best way to debug this is to start a manual install on the failing PC and proceed through the install wizard panels until the confirm panel prior to file transfers
- The majority of the dialog errors occur prior to the confirmation panel
- See if any unexpected dialogs appear that were not anticipated during recording

Silent Install Upgrade and Service Pack Install Tip

Use **Incoming Remote Command** component of iSeries Access for Windows with Silent Install Upgrades or Silent Service Pack Installs

- Start service on NT/2000/XP/2003 client
 - Specify to log on as Local System Account to satisfy Administrator authority restriction needed for install
 - No need to "Allow Service To Interact With Desktop" for a Silent Upgrade or Service Pack Install
- RUNRMTCMD on iSeries specifying setup.exe/setupsp.bat and userid/password of Administrator account on PC
 - RUNRMTCMD
CMD('w:\proddata\Access\Windows\install\image\setupsp.bat -s -f1\myserver\silentshare\sltsp.iss') RMTLOCNAME(PCNAME *IP) RMTUSER(PCUSER) RMTPWD(PCPASSWD)
- REXEC from a TCP/IP client can also be used to submit setup.exe



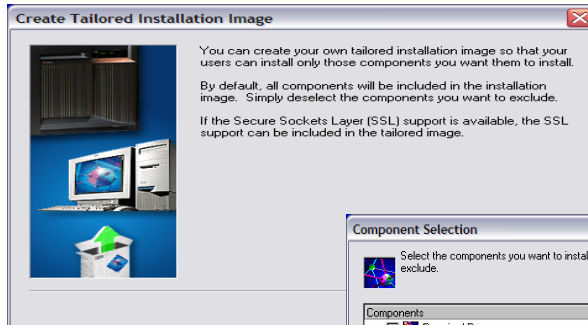
Combine use of Tailored and Silent Install

- You wish your users to:
 - Have only selected parts of iSeries Access for Windows installed on their PC
 - And you don't want them to find additional Access for Windows functions in the Selective Install windows
 - Get it installed on their PCs without user intervention
 - Want updates (service packs) and new releases to automatically get installed on those end user PCs
- Use a combination of Tailored Install and Silent Install and a few PC commands (wizards) to do this
- From then on Access for Windows will keep desktop users up to date.
- Use new PTFFORM to update Tailored Install directory with fixes

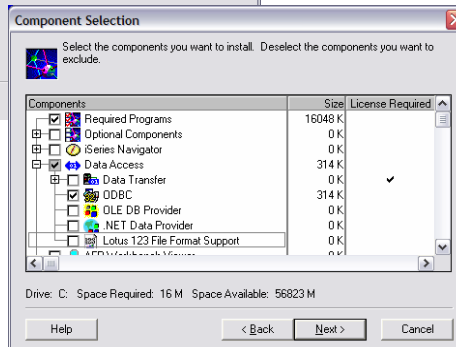
Steps to perform...



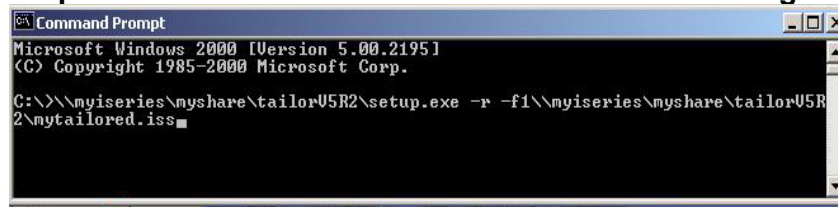
Create Tailored Install Image of ODBC driver



You just used iSeries Access for Windows Tailored Install wizard to capture only the Windows ODBC driver



Step 2. Record Silent Install of the Tailored Install Image

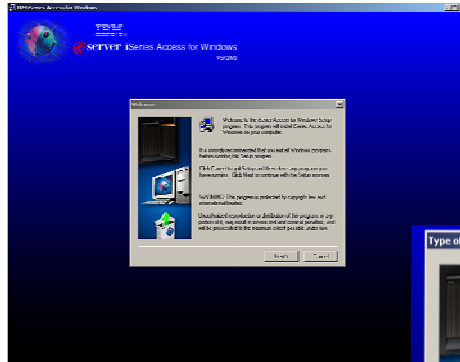


Set up to record a Silent Install Response File

Using 'universal naming convention' (UNC) rather than mapping a drive - so it can be found without a mapped drive

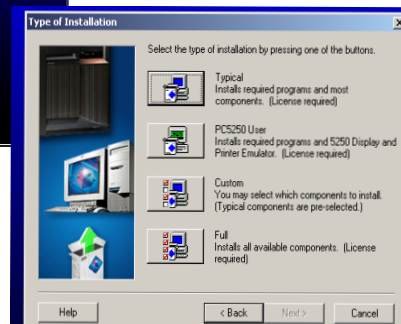
- Do not have any version of Client Access or iSeries Access (5763-XD1, 5722-XE1) on your PC
- Point to QIBM directory on your iSeries
- Point to location you want to store your response file (not in QIBM directory)
- Bring up a command prompt
- Key in Silent Install command
 - 'setup -r -f1d:\dir\file.iss' to identify where responses are to be stored
- This starts the iSeries Access Install program

Recording the install of Tailored Install folder



- Now select 'Full' install to capture steps to install everything that is in the Tailored Install file

Note: during this step this image is also being installed on your PC. You probably want to uninstall it after completing this step.



Step 3. Schedule Silent Install for PC Desktop

```

Microsoft Windows [Version 5.00.2195]
(C) Copyright 1985-2000 Microsoft Corp.

C:\>help at
The AT command schedules commands and programs to run on a computer at
a specified time and date. The Schedule service must be running to use
the AT command.

AT [[\computername] [ /id] [/DELETE] | /DELETE [/YES]]
AT [[\computername] time [/INTERACTIVE]
  [ /EVERY:date[,...]] | /NEXT:date[,...]] "command"

\computername Specifies a remote computer. Commands are scheduled on the
local computer if this parameter is omitted.
id Is an identification number assigned to a scheduled
command.
/delete Cancels a scheduled command. If id is omitted, all the
scheduled commands on the computer are canceled.
/yes Used with cancel all jobs command when no further
confirmation is desired.
time Specifies the time when command is to run.
/interactive Allows the job to interact with the desktop of the user
who is logged on at the time the job runs.
/every:date[,...] Runs the command on each specified day(s) of the week or
month. If date is omitted, the current day of the month
is assumed.
/next:date[,...] Runs the specified command on the next occurrence of the
day (for example, next Thursday). If date is omitted, the
current day of the month is assumed.
"command" Is the Windows AT command, or batch program to be run.
  
```

- Bring up Command prompt
- Use 'AT' command... or some other scheduler program/wizard

Add the Silent Install response file to the AT "Command" step

```

Microsoft Windows 2000 [Version 5.00.2195]
(C) Copyright 1985-2000 Microsoft Corp.

C:\>\myseries\myshare\tailorU5R2\setup.exe -s -f1\myseries\myshare\tailorU5R2\mytailored.iss

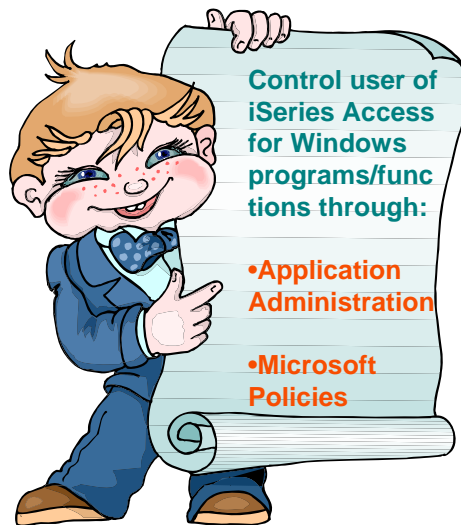
Microsoft Windows 2000 [Version 5.00.2195]
(C) Copyright 1985-2000 Microsoft Corp.

C:\>help at
The AT command schedules commands and programs to run on a computer at a specified time and date. The Schedule service must be running to use the AT command.

AT [\computername] [ /id] [/DELETE] [+ /DELETE [/YES]]
AT [\computername] time [/INTERACTIVE]
[ /EVER:date[,...]] [+ /NEXT:date[,...]] "command"

\computername Specifies a remote computer. Commands are scheduled on the local computer if this parameter is omitted.
id Is an identification number assigned to a scheduled command.
/delete Cancels a scheduled command. If id is omitted, all the scheduled commands on the computer are canceled.
/yes Used with cancel all jobs command when no further confirmation is desired.
time Specifies the time when command is to run.
/interactive Allows the job to interact with the desktop of the user who is logged on at the time the job runs.
/EVER:date[,...] Runs the command on each specified day(s) of the week or month. If date is omitted, the current day of the month is assumed.
/NEXT:date[,...] Runs the specified command on the next occurrence of the day (for example, next Thursday). If date is omitted, the current day of the month is assumed.
"command" Is the Windows NT command, or batch program to be run.
    
```

Schedule the Silent Install for end user's desktop



Control Access to iSeries Access for Windows

Policy Administration

- Based on Microsoft System Policy support
- PC user has one set of policies for connectivity to all iSeries servers
- Can set policies on a specific PC as well as users and groups
- Can be used to 'configure' as well as restrict functions
- **Over 150 policies available!**
- Uses Microsoft System Policy Editor and Client Access Policy templates

The Microsoft Way...

- Preferred method for those familiar or already using Microsoft System Policies

Applications Administration

- Based on OS/400 user profiles -- thus supports users and groups
- User profile can roam with user (from any PC)
- A user can have different profiles for different iSeries
- Can restrict usage of Operations Navigator functions, Client Access functions, APIs available for use by other plug-ins
- Easy-to-use Operations Navigator GUI

The iSeries Way...

- Preferred method for those who want to control access via OS/400 user profiles

Using Policies: Get the Microsoft System Policy Editor

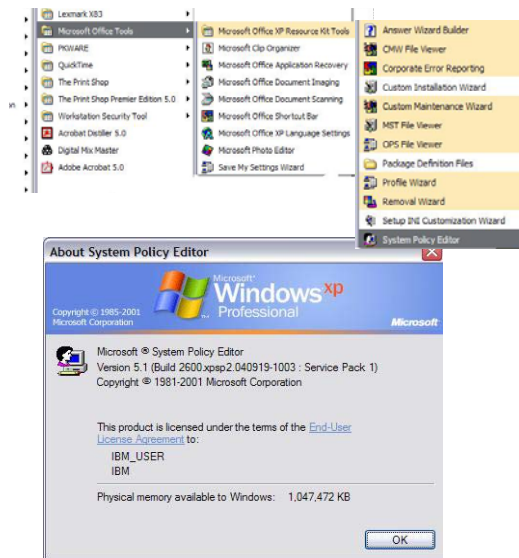
Go to Microsoft web page and download and install "Office XP Resource Kit"

- <http://www.microsoft.com/windows/default.mspx>
- Search on 'download system policy editor'

The Microsoft System Policy Editor is in the Office XP Resource Kit

- To find it click:
 - Start → Programs →
 - Microsoft Office Tools →
 - Microsoft Office XP Resource Kit Tools → System Policy Editor

Note: Get the Policy Editor which matches your Windows Operating System



Create iSeries Access for Windows Templates

Create iSeries Access for Windows Policy Templates that can be used with the Microsoft System Policy Editor

- Run iSeries Access for Windows **CWBADGEN** utility to create the templates
- **CWBADGEN** is in Program Files/IBM/Client Access path
- On a DOS prompt, run **CWBADGEN /std** to create the templates

```

(C) Copyright IBM Corporation and Others 1984, 2003. All rights reserved.
U.S. Government Users Restricted Rights - Use, duplication or disclosure
restricted by GSA ADP Schedule Contract with IBM Corp.
Licensed Materials - Property of IBM

Usage: cubadgen [/ps <fileName>] [/cfg <fileName>] [/std]

Examples:

cubadgen /ps S1034345
    Generates per-system template for system S1034345.
    Output filename is S1034345.adm

cubadgen /std
    Generates caecfg.adm, caeinrt.adm, and caerestr.adm

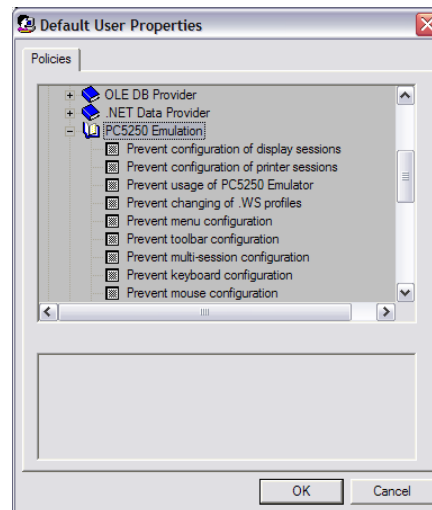
cubadgen /cfg config.adm
    Generates info to configure systems and environments from
    existing configuration information. Output filename is
    config.adm

C:\Program Files\IBM\Client Access>cubadgen /std
  
```

Create Policies (example PC5250)

Start Microsoft System Policy Editor and from toolbar select:

1. Options → Policy Editor → Add
 - Go to the Program Files/IBM/Client Access directory and select the **caerestr.adm** file that was created by CWBADGEN utility and **add it** to the Microsoft System Policy Editor list
2. File → Open Registry → Local User
 - Double click on the **IBM iSeries Access Runtime Restrictions** template
 - Select PC5250 emulation and **set the restrictions** you wish to impose, then click OK.



PC5250 Restriction Options

- Prevent usage of PC5250 emulator
- ➔ • Prevent configuration of display sessions
- Prevent configuration of printer sessions
- Maximum number of PC5250 sessions
- ➔ • Prevent changing of .WS profiles
- ➔ • Prevent menu configuration
- Prevent toolbar configuration
- Prevent multi-session configuration
- ➔ • Prevent keyboard configuration
- Prevent mouse configuration
- Prevent Java™ applet execution
- Prevent access to macros
- Prevent profile imports in Emulator Session Manager
- Prevent profile deletion in Emulator Session Manager
- Prevent directory changes in Emulator Session Manager

Centrally Manage 5250 Use

Let's say you would like to control:

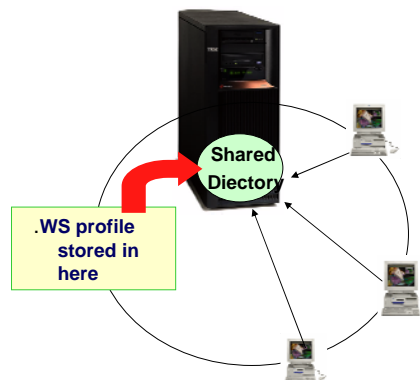
- **What the users can do with PC5250**
 - Number of sessions they can start, systems they can connect to, change keyboard mappings, etc
- **Manage all of this on your server so you could change something in a single location and make it available to all users**



PC5250 Enhancement – V5R1

Can have multiple 5250 sessions with just one .WS profile

- This gives you ability to:
 - Set up and manage the iSeries servers your users connect to
 - Make all 5250 workstation sessions look identical
 - Screen settings
 - Keyboard
 -
 - When you make a change to these profiles, it will automatically be made for all users



See Appendix A for directions on how to do this

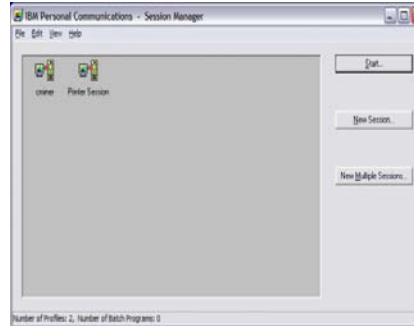
Steps to use the shared .WS profile concept

1. Set up a **shared directory** and give all users 'read only' access to it
2. Use Session Manager to configure the connections/sessions for your users and save these **Profiles** in your shared directory
3. Install iSeries Access for Windows and PC5250 on each user's PC
4. Go into **iSeries Access for Windows Properties** and set each users PC5250 default path to point to the shared directory you created.

Store Profiles on Server

Go into iSeries Access for Windows, select 'Emulator', then select to **Start or Configure Session**

- This is called the **Session Manager**. It enables you to:
 - Start a new session
 - Configure a new batch session
 - Start an existing session
- Select 'New Session'
 - Now configure the sessions/connections that you wish to provide to your users.
 - Save them in your shared directory



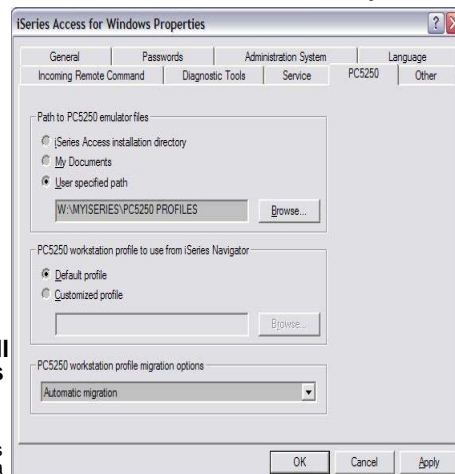
At the User's PC

Set PC5250 to look for 5250 emulator files on shared directory

Bring up **iSeries Access for Windows Properties** and select the **PC5250** tab

- Copy any files stored in the **\Private** folder to your shared directory
- Change the default from the **iSeries Access installation directory** to **User specified path**
- Then put in server address that all your users have read-only access to

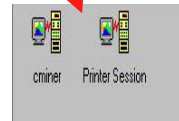
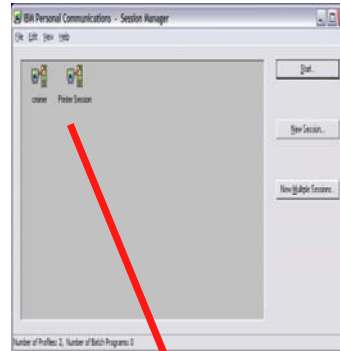
This needs to be done for every iSeries Access for Windows user. If more than one user on a single PC, use CWBCFG command from a DOS prompt to change path for all users.



At the User's PC

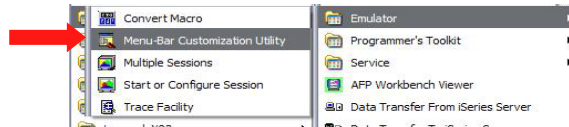
Go back into the Session Manager

- Start → Programs → iSeries Access for Windows, select 'Emulator', then select to **Start or Configure Session**
- Put the sessions you want the user to have access to on the user's desktop



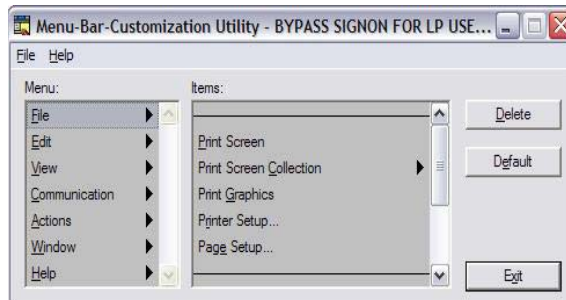
Menu-Bar Customization Utility

- Use Menu Bar Customization Utility to eliminate the items you don't want users to be able to perform.



- For example, disable users' ability to create "new" connections, remove Properties...

- When you are finished, store this also in your shared directory



Notes: Menu-Bar Customization Utility

This utility enables you to remove items from the menu bar of the Personal Communications session window; the changes affect only the session that you customize, so you can make different changes to each session. You can remove the following three types of menu items:

- A menu bar command, such as File, Edit, View, and Help.
- A pulldown menu command, such as New, Open..., Color Mapping, and Configure.
- A separator line that resides between two commands in a pulldown menu.

The instructions to modify the menu bar are saved in the workstation profile that you choose and become active next time you start the session.

How to delete menu items

Note: If you want to delete all menu bar commands, do not use this utility. If you use a workstation profile which has no menu bar commands, no less than one menu bar command will appear. Instead, deselect View -> Menu from the session window.

To delete menu items, do the following:

1. Select the Menu-Bar Customization Utility from the IBM Personal Communications -> Utilities folder.
2. Click File -> Open.

The Open WorkStation Profile window appears.

3. Choose the profile and click OK.

The menu items appear in the Menu and Items list boxes

4. Choose a menu item to be deleted.
5. Click Delete.

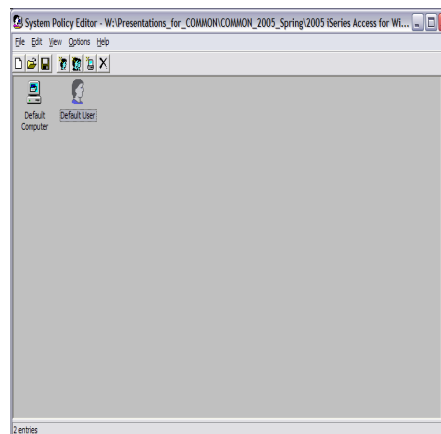
The menu item which you chose is removed from the list box. If you accidentally delete the wrong item from the either the Menu or Items list, click Default--this restores all the default menu selections for the profile.

6. Repeat the previous two steps until you have deleted all the menu items you want.
7. Click Exit.

Store Policies on a Shared Directory

Still in the System Policy Editor

- **Select File → Save As**
- **Save the Policy Files you just created on a shared directory that each PC user has **read only** access to**
 - **The file getting saved has a .POL file extension.**



Get address of .POL file on every PC desktop

When Windows is started, it needs to load the policy information to put into effect before completing its boot-up.

Provide Windows with the location where the policy file is stored.

- Use the iSeries Access for Windows **CWBPOLUZ.exe** command to tell Windows where the policy file is stored.
 - Download this command from <http://www.ibm.com/eserver/ieseries/access/cadownload.htm>

How to get **CWBPOLUZ.exe** to run on every PC

- Manually run this command on each PC when you are setting it up
 - This could be directly at the PC
 - Or you could Log onto the PC remotely
- Use **iSeries Access for Windows Incoming Remote Command** to get this command run on remote PCs
- REXEC, etc

Application Administration Overview

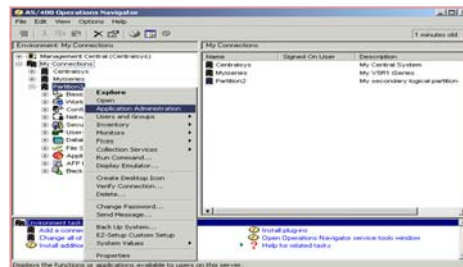
- **Manage access to functions on a "per iSeries user" basis**

- iSeries Navigator
- iSeries Access for Windows functions
- Other client and host applications
- Ability to even restrict users with All Object privilege

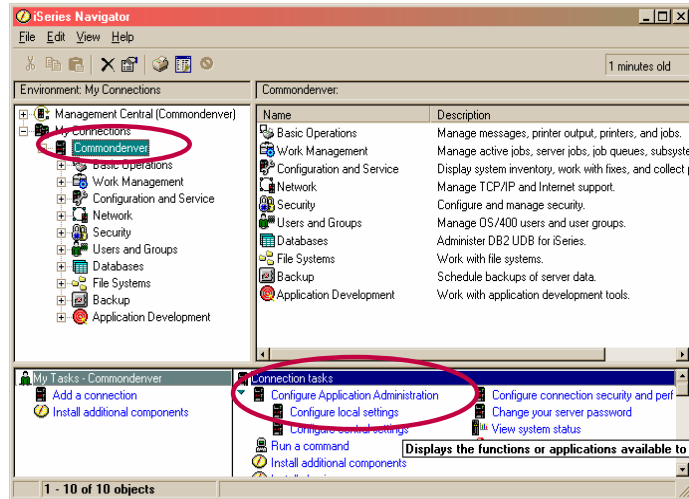
- **Easy to use interface**

- ***SECADM authority required on iSeries to manage Application Administration settings**

- *ALLOBJ required for some Advanced Settings



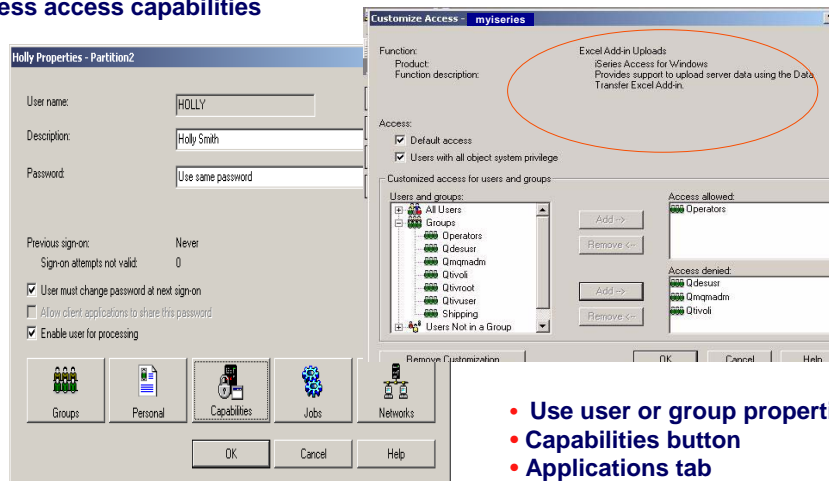
Application Administration



- Can access from Task Bar also

Application Administration - By User or Group

Individual users and groups can be given more or less access capabilities

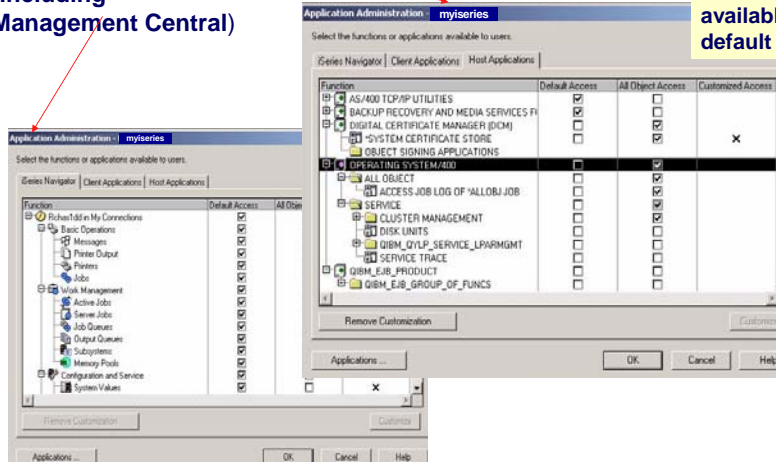


- Use user or group properties
- Capabilities button
- Applications tab

Application Administration - by system

- Host Applications
- iSeries Navigator (including Management Central)

Disk management is not available by default

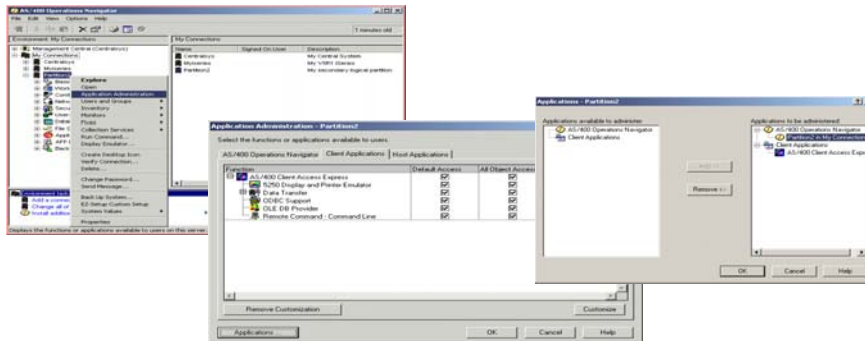


Notes: Registering Applications

Add and remove applications to be administered through Application Administration

No changes can be made to the "shipped value" for access settings until the application has been registered to Application Administration

If an application is shown in both lists on this dialog, it indicates the application has been registered on the iSeries, but there are some administrator functions for this application that are defined on this client, but are not registered on the iSeries. You can select the application and press "Add" to register the additional functions.



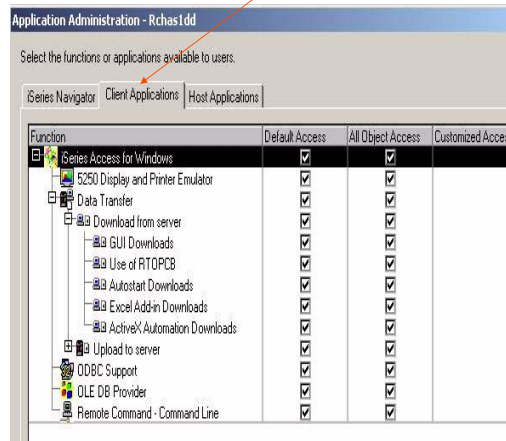
Application Administration – iSeries Access

All Application Administration information is stored on the iSeries server, and roams with users when they use iSeries Access for Windows on a different PC

iSeries Access for Windows

Can control use of the following iSeries Access for Windows functions:

- PC5250
- Data Transfer
- ODBC
- OLE DB
- Remote Program Calls
- iSeries Access for Windows/ iSeries Navigator commands



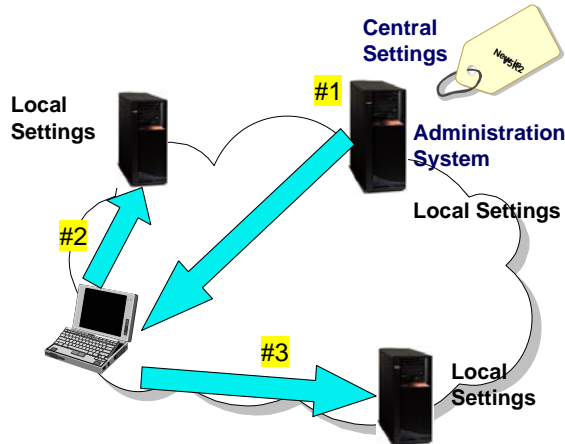
Type of error message end user might receive



Application Administration for iSeries Access for Windows

Central Settings
New in V5R2

Applies to iSeries Access for Windows functions only



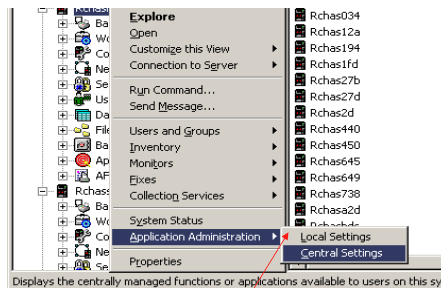
Application Administration - Local Settings

Local Settings

- Can reside on any iSeries
- Were the only type of administrative settings supported by Application Administration prior to V5R2.

They are now called Local Settings because:

- Each iSeries maintains its own set of Application Administration settings.
- When an iSeries Access for Windows client accesses multiple iSeries servers, it will use whatever Local Settings were defined on each server it connects to...

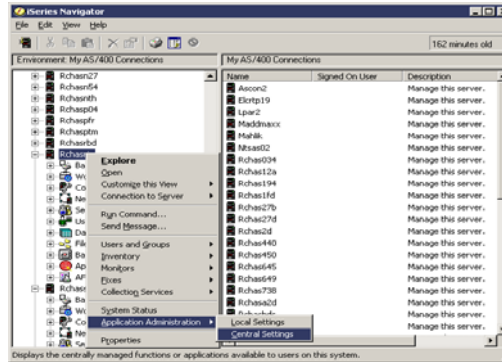


Displays the centrally managed functions or applications available to users on this syst

Application Administration - Central Settings

Central Settings:

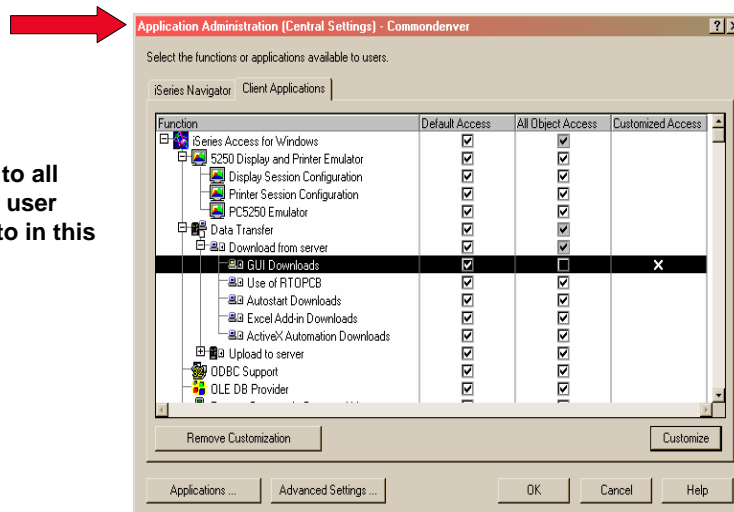
- Affect iSeries Access for Windows properties that apply to all iSeries servers that the client may access.



- Central settings:**
- Can only be used on OS/400 and iSeries Access for Windows V5R2 or later
 - One iSeries must be configured as an "Administration System".
 - iSeries Access for Windows clients will retrieve central settings from the "Administration System"

Example – Central Settings

Will apply to all systems a user connects to in this network

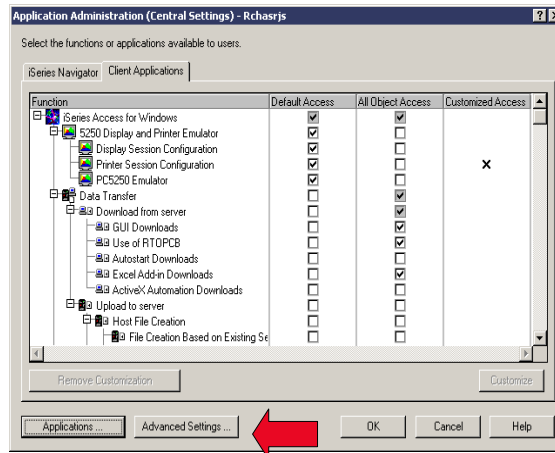


Central Settings - Advanced

Central Settings support Advanced Settings

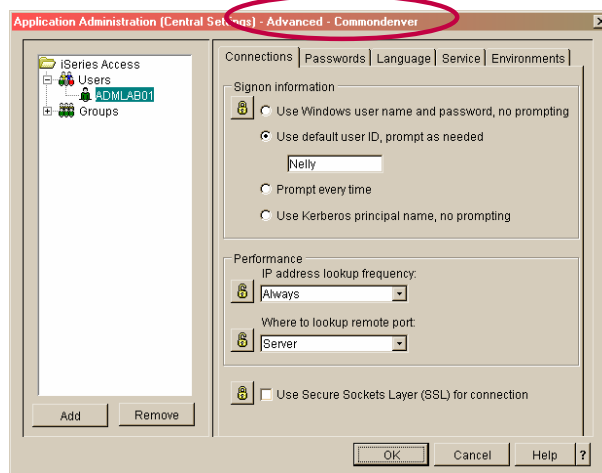
This allows an administrator to customize many of the properties used by iSeries Access for Windows, such as:

- Defining a set of environments to be used by the client
- Customize many of the connection, service, language, and password used by the clients



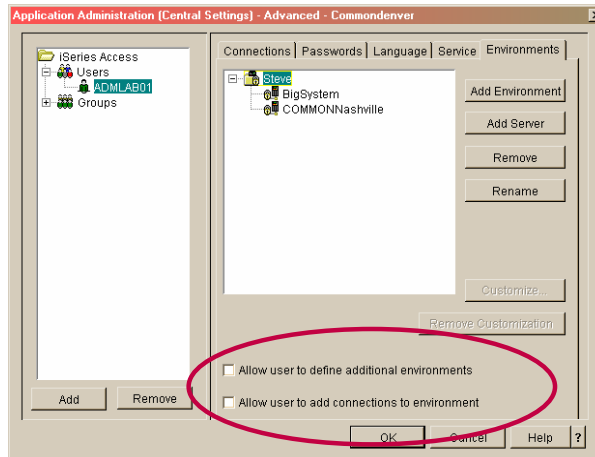
Example of an Advanced Setting

Connections: Signon information; Performance



Example of an Advanced Settings

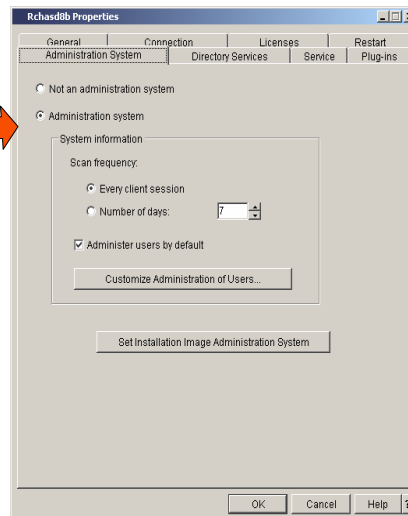
Prohibit users from defining additional environments



Identify a "Central" System

In order to use a "Central System, you must set up a system in the network to be the "Administration system"

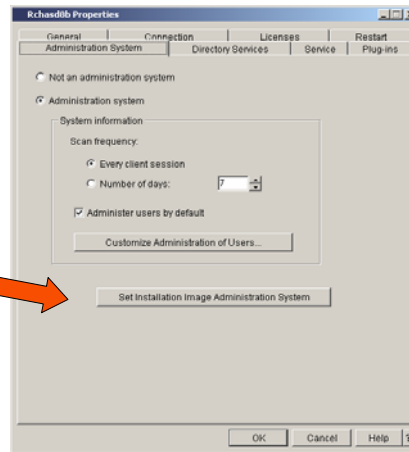
1. Start iSeries Navigator and point to system you want to be the Administration System
2. Right click on the system name and select "Properties"
3. Click the Administration System Tab
4. Check "Administration System" button to set the system as your Administration System



Identify a “Central” System (continued)

The key of the Central Settings concept is to make it transparent to end users.

- You should also set up this system in your iSeries Access for Windows install image.
- Select the “Set Installation Image Administration System” button to do this.
- Then any PC user installing iSeries Access for Windows from this system will automatically be set up with this system being their “Central System”



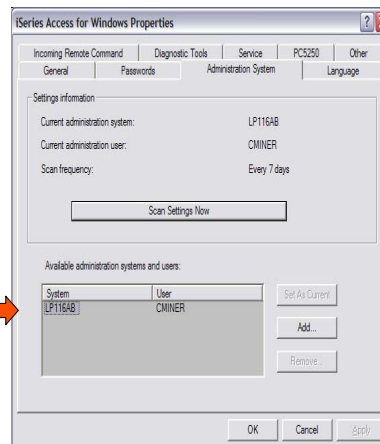
- This also saves administration costs as this is the only system in your network where you would need to install iSeries Access for Windows.
- Additionally, in the future, you would only need to apply Service Packs and new releases to this system.

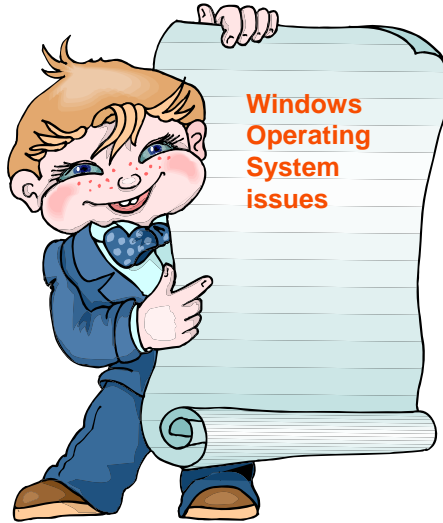


Set up PCs to know which system is “Central” System

For PCs with code already installed

- Go to each PC and open up the iSeries Access for Windows “Properties” panel.
- Go to “Administration System” tab, and set the system name for the user.





Windows NT
 Windows 2000
 Windows XP
 Windows 2003

Can become a challenge
 to administer in a network

There are 2 user
 account types:

- Computer administrator
- Limited



Capabilities	Computer Administrator	Limited
Install programs and hardware	Yes	No
Make system-wide changes	Yes	No
Access and read all non-private files	Yes	No
Create and delete user accounts	Yes	No
Change your own picture	Yes	Yes
Create, change or remove your own password	Yes	Yes

Install and Service Pack Tips

Difficult to install new products or Service Packs on PCs with Windows NT/2000/XP/2003 if user does not have **Administrator Authority**

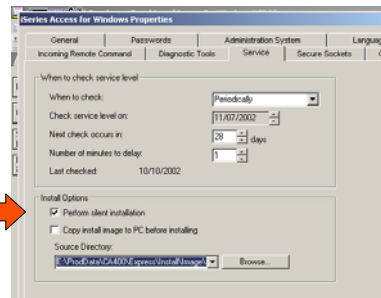
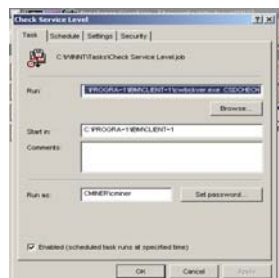
To circumvent this problem:

- 'Check Service Level' can be invoked via a scheduler running under **administrator authority** to install service packs or upgrades
- Steps:
 - Sign onto Windows NT/2000/XP/2003 as an administrator.
 - Configure NT/2000/XP/2003 schedule service
 - On Windows 2000, Control Panel->Scheduled Tasks
 - Set check service level properties
 - Schedule check service level

If PC set up with User Level Authority, Windows locks out file replacements

Install and Service Pack Tips (continued)

Administrator can set up Access for Windows for Silent updates...



Need Administrator's userid/password in here
Note: Userid/password must be same on Windows as on iSeries

Summary

Lots of administrative tools to assist you in managing your network PCs

- V5R3 changes
- iSeries Access for Windows Install/Upgrade
 - Check Service Level
 - Install and Service Pack Tips
- Install Tools
 - Tailored Install
 - iSeries Access for Web Download
 - Silent Install
- Microsoft Policies
- iSeries Navigator Application Administration



Trademarks and Disclaimers

© IBM Corporation 1994-2005. All rights reserved.
 References in this document to IBM products or services do not imply that IBM intends to make them available in every country.
 The following terms are trademarks of International Business Machines Corporation in the United States, other countries, or both:

eServer
 AS/400
 AS/400e

e-business on demand
 IBM

i5/OS
 OS/400

Rational is a trademark of International Business Machines Corporation and Rational Software Corporation in the United States, other countries, or both.
 Java and all Java-based trademarks are trademarks of Sun Microsystems, Inc. in the United States, other countries, or both.
 Microsoft, Windows, Windows NT, and the Windows logo are trademarks of Microsoft Corporation in the United States, other countries, or both.
 Intel, Intel Inside (logos), MMX and Pentium are trademarks of Intel Corporation in the United States, other countries, or both.
 UNIX is a registered trademark of The Open Group in the United States and other countries.
 SET and the SET Logo are trademarks owned by SET Secure Electronic Transaction LLC.
 Other company, product or service names may be trademarks or service marks of others.

Information is provided "AS IS" without warranty of any kind.

All customer examples described are presented as illustrations of how those customers have used IBM products and the results they may have achieved. Actual environmental costs and performance characteristics may vary by customer.

Information concerning non-IBM products was obtained from a supplier of these products, published announcement material, or other publicly available sources and does not constitute an endorsement of such products by IBM. Sources for non-IBM list prices and performance numbers are taken from publicly available information, including vendor announcements and vendor worldwide homepages. IBM has not tested these products and cannot confirm the accuracy of performance, capability, or any other claims related to non-IBM products. Questions on the capability of non-IBM products should be addressed to the supplier of those products.

All statements regarding IBM future direction and intent are subject to change or withdrawal without notice, and represent goals and objectives only. Contact your local IBM office or IBM authorized reseller for the full text of the specific Statement of Direction.

Some information addresses anticipated future capabilities. Such information is not intended as a definitive statement of a commitment to specific levels of performance, function or delivery schedules with respect to any future products. Such commitments are only made in IBM product announcements. The information is presented here to communicate IBM's current investment and development activities as a good faith effort to help with our customers' future planning.

Performance is based on measurements and projections using standard IBM benchmarks in a controlled environment. The actual throughput or performance that any user will experience will vary depending upon considerations such as the amount of multiprogramming in the user's job stream, the I/O configuration, the storage configuration, and the workload processed. Therefore, no assurance can be given that an individual user will achieve throughput or performance improvements equivalent to the ratios stated here.

Photographs shown are of engineering prototypes. Changes may be incorporated in production models.