



Session: 270080

iSeries. mySeries.

What's New in iSeries Access Family 2004

© Copyright IBM Corporation, 2004. All Rights Reserved.
This publication may refer to products that are not currently
available in your country. IBM makes no commitment to make
available any products referred to herein.

Carole Miner
iSeries Client Integration
Rochester, Mn
cminer@us.ibm.com

IBM CONFIDENTIAL UNTIL ANNOUNCED


iSeries. mySeries.





iSeries Access Family Products





▪ This presentation will cover the variety of connectivity options that
iSeries Access Family provides to meet your needs:

- ▶ **Linux (native)**  ★ **iSeries Access for Linux**

- ▶ **Windows (native)**  ★ **iSeries Access for Windows**

- ▶ **Wireless**  ★ **iSeries Access for Wireless**

- ▶ **Browser-based**  ★ **iSeries Access for Web**
 ★ **HATS LE**

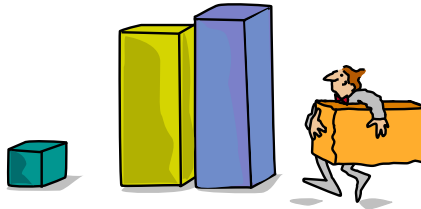
© 2004 IBM Corporation

IBM CONFIDENTIAL UNTIL ANNOUNCED

iSeries. mySeries.



Packaging & Ordering



© 2004 IBM Corporation

IBM CONFIDENTIAL UNTIL ANNOUNCED

iSeries. mySeries.



iSeries Access Family Packaging



V5R3 5722-XW1 iSeries Access Family	V5R2 5722-XW1 iSeries Access Family
• iSeries Access for Windows, 5722-XE1, V5R3	• iSeries Access for Windows, 5722-XE1, V5R2
• iSeries Access for Web, 5722-XH2, V5R3	• iSeries Access for Web, 5722-XH2, V5R2
• iSeries Access for Wireless, 5722-XP1, V5R2	• WebSphere Host Publisher, 5724-B81, V4.0, 5724-B81, V4.01
• HATS Limited Edition V5.0, 5724-F97-01	• HATS Limited Edition V4.0 5724-D34-01 (after 6/30/2003)
• iSeries Access for Linux, 5722-XL1, V5R3	
	V5R2 customers not wanting to upgrade to OS/400 V5R3 but want the new V5R3 iSeries Access Family clients can order no-charge Feature No. 2647 of Product No. 5722-XW1



OS/400 V5R1

- EOM was 12/2003
- ~~EOS was 5/31/2004~~
- EOS has been extended to 9/30/2005

© 2004 IBM Corporation

IBM CONFIDENTIAL UNTIL ANNOUNCED

iSeries. mySeries.



Products - Focus

@server®

Description	Product	Product Number	Need 5722-XW1 to use
Family Name	➤ iSeries Access Family	5722-XW1	Yes
Windows client	➤ iSeries Access for Windows	5722-XE1	Yes (for 5250 and Data Transfer)
Linux client	➤ iSeries Access for Linux	5722-XL1	Yes
Browser Access	➤ iSeries Access for Web ➤ HATS LE	5722-XH2 5724-F97-01	Yes Yes
Handheld / Wireless offering	➤ iSeries Access for Wireless ➤ iSeries Toolbox for Java ME	5722-XP1	No
OS/400 systems management	➤ iSeries Navigator ➤ Operations Console ➤ EZ-Setup	Packaged in 5722-XE1	No

Flexible Purchase Options

⊕ Processor-Based = purchase price based on software tier, connect unlimited numbers of users

⊕ User-Based = purchase only number of users who will be concurrently connected

Note: Can upgrade from User-Based to Processor-Based, but cannot go back to User-Based after purchasing Processor-Based

⊕ Software maintenance included in base OS/400 software subscription



@server®

iSeries Access for Linux

**Available since
August 2003**



www.ibm.com/eserver/series/access/linux



What is iSeries Access for Linux



- iSeries Access for Linux includes the following features:
 - Full function 5250 emulator
 - This function enables end users to work with OS/400 system screens and run host applications
 - ODBC driver
 - This function enables your Linux PC applications to access information in DB2 UDB for iSeries
 - iSeries Access APIs
 - RmtCmd, NLS, System Object...
- Supported for use on the following:
 - Linux operating systems with Intel processors and on Power PCs
 - iSeries server logical partition (LPAR)



Designed to run natively on Linux operating systems

© 2004 IBM Corporation

IBM CONFIDENTIAL UNTIL ANNOUNCED

iSeries. mySeries.



Full-function, Native 5250 emulator



- The 5250 emulator contains a variety of functions, such as:
 - Ability to provide a workstation/device ID
 - Both 80 and 132 screen sizes
 - Keyboard mapping (GUI)
 - Macro support
 - Record/playback
 - Pop-up/pull-down keypads
 - Screen print
 - and other capabilities

```
MAIN OS/400 Main Menu
Select one of the following:
1. User Setup
2. Device Setup
3. System Setup
4. File, Printer, and Disk
5. Programming
6. Communications
7. Device Manager
8. Problem Reporting
9. Setup a New
10. Transfer a Message
11. Create a New Task
12. Sign Off
Definition of Command
F2=Exit F4=Prompt F9=Retrieve F12=Cancel F13=Information Assistant
F22=Set Initial menu
(C) Copyright IBM Corp. 1990, 2002
```

- It can also asynchronously display server messages in the 5250 interface



For Linux end users

Users Guide explains 5250 emulator functions

- www.ibm.com/eserver/iseries/access/linux/pdf/iseries_access_5250.pdf

© 2004 IBM Corporation

IBM CONFIDENTIAL UNTIL ANNOUNCED

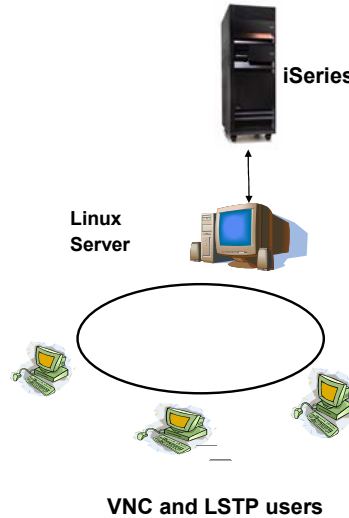
iSeries. mySeries.



Supports 3-tier environments



- **New ibm5250 - STAND_ALONE command line option.**
- **Enables easy use of:**
 - Virtual Network Computing (VNC)
 - Linux Terminal Server Project (LSTP)



National Language Support



- **5250 emulation menus and messages are available in 17 national language versions**
 - The main emulator window labels and helper applications are translated and will display based on the \$LANG system environment variable
 - The command line value – LANGID may also be used to set the language
 - English text displayed for missing NLVs
- **DBCS is being investigated for a future release**

Language	Locale	Description
2922	pt_PT	Portuguese in Portugal
2924	en_US	English
2925	fi_FI	Finnish
2926	da_DK	Danish
2928	fr_FR	French
2929	de_DE	German
2931	es_ES	Spanish
2932	it_IT	Italian
2933	no_NO	Norwegian
2937	sv_SE	Swedish
2929	de_CH	German Swiss
2940	fr_CH	French Swiss
2942	it_CH	Italian Swiss
2963	nl_BE	Belgium
2966	fr_BE	French in Belgium
2980	pt_BR	Portuguese in Brazil
2981	fr_CA	French Canadian

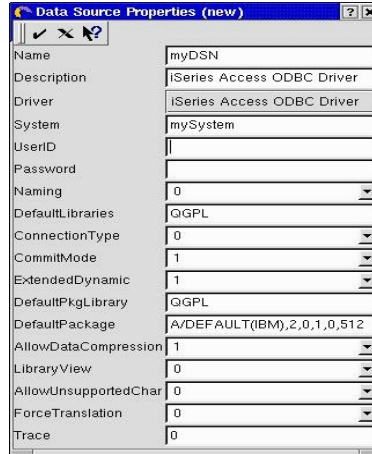


Native ODBC Driver



Extending the reach to iSeries data...

- Can run ODBC applications, such as:
 - OpenOffice
 - ODBC and PHP for Web Serving
 - ODBC and Perl
 - unixODBC DataManager
 - “Explorer” type of application to manage DSNs
 - Run and view results of SQL requests
 - unixODBC 2.2.3 version ships DataManagerII with additional features
 - unixODBC isql
 - Command line application
 - Neat way to generate simple HTML page with data tables
 - Your own applications...



The high-function, best-performing iSeries ODBC driver (included in iSeries Access for Windows) was ported to run on Linux



iSeries Access for Linux V1.4 now available



iSeries Access for Linux available via 'download' only

You can obtain iSeries Access for Linux in two ways

- Download from the web
 - www.ibm.com/eserver/iseries/access/linux
- Connect to your iSeries using iSeries Access for Web.
 - Select the ‘Download’ tab, then select the appropriate Access for Linux download



Either way iSeries Access for Linux is fully supported through IBM SupportLine

Over 5,000 downloads already from 60 different countries!



Access for Web 'Download' Capability



Let users download iSeries Access for Web by using iSeries Access for Web 'Download' feature



Go out to our demo web site at:

<http://iseriesd.dfw.ibm.com/webaccess/iWAPackages> (userid is WUSER (or WACUST), password is GUEST1 (one, not L) and see Access for Web 'Download' capabilities



iSeries NetServer: Supports Linux Clients



- iSeries NetServer was expanded to support **Linux** clients.

- Thus iSeries NetServer provides the same file and print sharing functions to Linux users as it does for Windows users.

- Linux clients (with kernel Version 2.4.3 or higher) with SAMBA (Version 2.0.7 or 2.2) can access the iSeries
- This functions in built into OS/400 V5R2 (and a PTF in OS/400 V5R1)

This gives the iSeries administrator the ability to easily control what files or printers a Linux user can get access to



For additional information, see:

<http://www.ibm.com/eserver/iseries/netserver>

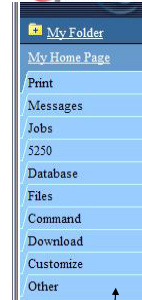


Combine iSeries Access for Web for a complete Linux solution



iSeries Access for Web, 5722-XH2, V5R3

- **My Personal Folder**
- **Print**
 - Printer output
 - PDF Printer output
 - Printers
 - PDF Printers
 - Internet Printers
 - Internet Printer Shares
 - Printer shares
 - Output Queues
- **Database**
 - Tables
 - My Requests
 - Run SQL
 - Copy Data to Table
 - Import Request
 - Extract Server Data
- **5250**
 - Active Sessions
 - Start 5250 Session
 - Configured Sessions
- **Commands**
 - Run commands
 - My commands
 - Search
- **Files**
 - Browse Files
 - File Shares
- **Messages**
 - Display Messages
 - Send Messages
 - Sametime
 - Operator Messages
 - Message Queue
- **Jobs**
 - User Jobs
 - Server Jobs
- **Customize**
 - Preferences
 - Policies
 - Settings
- **Download**
- **Other**
 - Bookmarks
 - Change Password
 - Connection Pool
 - Status
 - Trace
 - About



iSeries Access for Linux – Customer Reference



Thanks IBM!!!

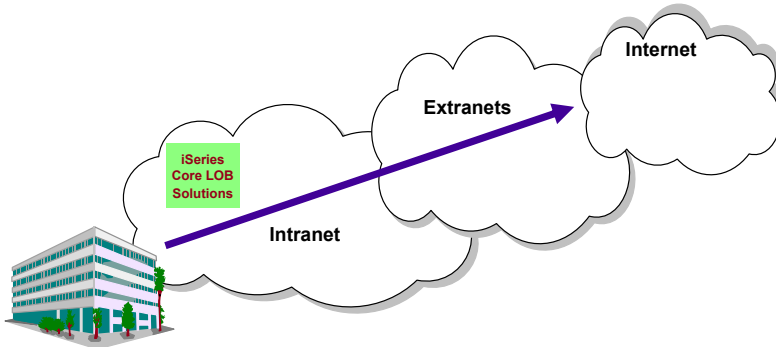
Great job folks! For several months I had been looking for a software package to handle IBM's 5250 protocol for Linux. While there are a few projects out there none of them could fit our needs. IBM's developers have done a great job in setting up a very smooth running version of Client Access for Linux. I was even more excited to see that the newest version would work with our LTSP system (Linux Terminal Server Project). We are now serving up 40+ desktops with full iSeries access from one Linux server with plans to expand the user base. Again, Great Job!

Eric Pell
Manager of Information Systems
Gainey Transportation Services
<http://www.gaineycorp.com>



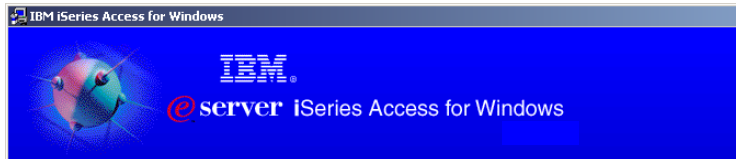


Core LOB Solutions



Looking for highly functional and integrated solution for:

- Windows servers and Windows desktop users
- iSeries administration and operation



**iSeries Access for
Windows
5722-XE1**



www.ibm.com/eserver/iseries/access/windows

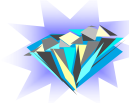


Integrating native Windows with iSeries



Want a single solution for working with all iSeries resources...

- A single offering designed for Windows users that provides:
 - High-function, easy-to-use 5250 emulator to work with iSeries applications
 - A PC print server that OS/400 output can be sent to and run unattended
 - Access to iSeries database and other resources from Windows applications
 - Ability to use iSeries as file and print server
 - Administer users and monitor/manage iSeries servers in the network
- No special web application server code required
 - All code runs natively on the Windows
- It's all in iSeries Access for Windows
 - PC5250 emulation, Data Transfer, ODBC, etc for end users and Windows programmers
 - iSeries Navigator to operate and administer iSeries systems and database
 - Operations Console to work with OS/400 system console
 - EZ-Setup to quickly and easily set up new iSeries servers



- The most comprehensive iSeries native Windows connectivity solution in the market
- 90+% of iSeries customers already using iSeries Access for Windows



Windows Operating Systems



The V5R3 version of iSeries Access for Windows will not install on:

- Windows 95
- Windows 98
- Windows ME

The V5R3 version of iSeries Access for Windows can be installed on:

- Windows NT 4.0
- Windows 2000
- Windows XP Professional
- Windows 2003 Server

▪ The V5R2 version of iSeries Access for Windows can be used on Windows 98, ME, NT 4.0, 2000, XP, 2003

▪ The V5R1 version of iSeries Access for Windows can be used on Windows 95, 98, and ME, NT 4.0, 2000, XP

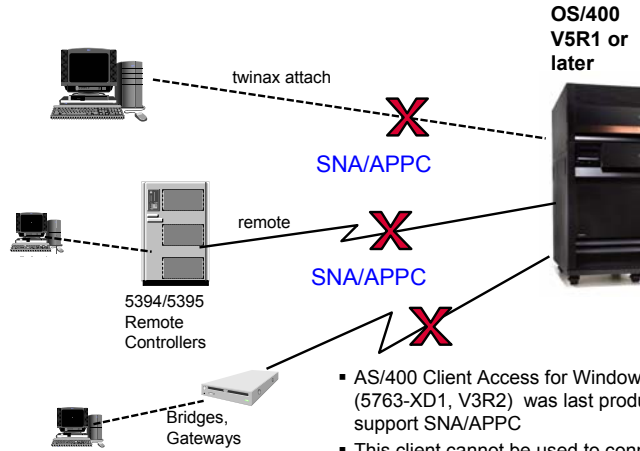


No SNA/APPCC support in iSeries Access Family



If you are upgrading an existing customer who has an SNA/APPCC network, plan for time and effort to switch network to TCP/IP...

iSeries
Access
Family
products



© 2004 IBM Corporation

IBM CONFIDENTIAL UNTIL ANNOUNCED

iSeries. mySeries.



Supports Microsoft operating environments...



Microsoft Transaction Services (MTS)

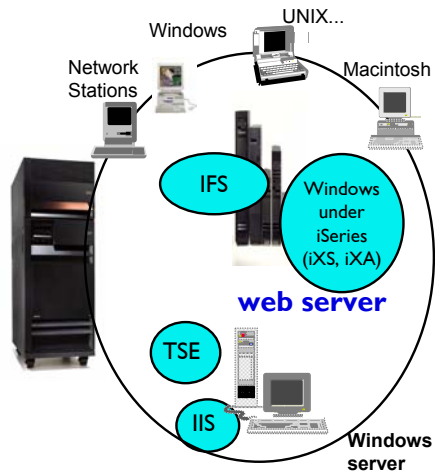
- example, an Auction House application where may need to back out transactions (ie, 2-phase commit)

Terminal Server Edition (TSE)

- iSeries Access runs on a Windows server, and enables multiple simultaneous users (such as Network Stations, DOS, Unix, or Macintosh) work with iSeries resources

Internet Information Services (IIS)

- Provides a Web application infrastructure for Windows Servers. iSeries Access runs on server, and fulfills requests for iSeries data (ie, ODBC, OLE DB, etc)



© 2004 IBM Corporation

IBM CONFIDENTIAL UNTIL ANNOUNCED

iSeries. mySeries.

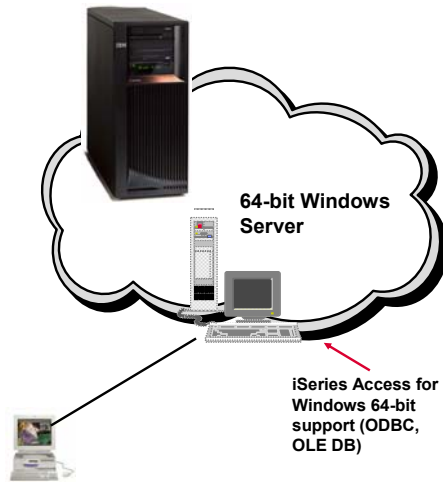


Supports new components...



Intel Itanium hardware

- The ODBC and OLE DB components have been ported to run natively on 64-bit Windows
 - Most other components will run in 32-bit mode on 64-bit hardware (print drivers and SSL support will not run with 64-bit applications).



© 2004 IBM Corporation

IBM CONFIDENTIAL UNTIL ANNOUNCED

iSeries. mySeries.



Supports leading network and security offerings...

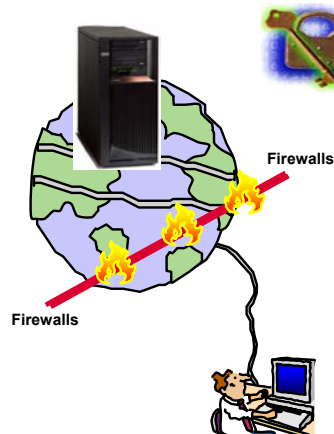


Security

- **Secure Sockets Layer (SSL)**
 - Including SSL client authentication
- **Kerberos**
 - Enterprise Identify Mapping (EIM) can be used with Kerberos
- **Long passwords**

Networking

- **Virtual Private Networks (VPN)**
 - Tunneling protocol and encryption to ensure secure communications
- **NAT (Network Address Translation)**
 - Hides iSeries address when on Internet



**If you do it on iSeries,
you can do it with
iSeries Access for
Windows...**

© 2004 IBM Corporation

IBM CONFIDENTIAL UNTIL ANNOUNCED

iSeries. mySeries.



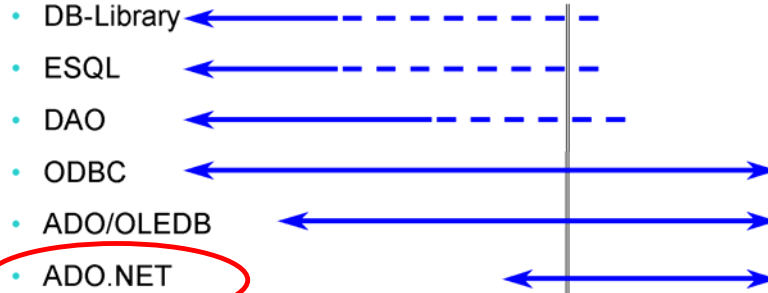
Microsoft-defined application middleware



.NET is the next big wave in Microsoft technology...

Microsoft Technology Roadmap

Today



Database Middleware



- ODBC Driver
 - Best performing ODBC driver for accessing iSeries database
- OLE DB Data Provider
 - Functionally rich access to iSeries database (including record-level access) and applications
 - Also has add-ins to Visual Basic to simplify development of Windows applications to work with iSeries
- .NET Data Provider
 - Enables applications using Microsoft's .NET framework to access iSeries database
- Data Transfer
 - Upload/download database information
- Middleware continually enhanced to stay current with new functions in iSeries and in Windows
 - **Unicode enablement** / New Unicode text file type
 - Support for UTF-8 and UTF-16 data in DB2 database tables

UTF8	UCS2	UTF16
ABC	ABC	ABC
εφΩ	εφΩ	εφΩ
Дня	Дня	Дня
אבג	אבג	אבג
طسذ	طسذ	طسذ

Retrieved record 7

A product description could be stored in the database in 10 different languages and used during product packaging for all these languages



iSeries Access for Windows – chargeable items



5250 Display and Printer emulation

- Personal Communications V5.7 5250 emulation product included in iSeries Access for Windows

• Key characteristics

- Full keyboard support (function keys, field exit key, etc)
- Macros, play-record features
- Break messages shown
- Optimal performance for data entry
- Printer emulation provides ability to 'push' iSeries printer output to PC-attached printers.
- Printer emulation enables user to print selected pages of output
- Worldwide enabled (SBCS, DBCS, bi-directional...)

Data Transfer

- Upload PC data to iSeries database, download iSeries database information to PC

• Key characteristics

- Add-ins for Excel to upload/download directly from/into spreadsheet
- Full set of conversions from PC format to iSeries database format
- Can schedule requests to run on desktop (without user intervention)
- Batch transfer capability
- Wizard to create iSeries tables on uploads
- Can SSL-enable individual transfer requests
- APIs for all data transfer GUIs
- Unicode enabled (UTF8, UTF16)
- Worldwide enabled (SBCS, DBCS, bi-directional...)



Combine use of Tailored Install and Silent Install



You want to control what your users install and manage the install centrally:

- Install only selected parts of iSeries Access for Windows, maybe different parts for different users (based on OS/400 user profiles)
- Don't want users to find additional Access for Windows functions in the Selective Install window
- Install the code on users' PCs without their intervention
- Get updates (service packs) and new releases automatically installed on those end user PCs

Use a combination of Tailored Install and Silent Install and a few PC commands (wizards) to do this:

- From then on, Access for Windows will keep desktop users up to date.

Use new PTFFORM to update Tailored Install directory with fixes

Steps to perform...



IBM Starting up 'Tailored Install'



Run **Cwbinimg.bat** wizard

- CWBinimg.bat is in QIBM directory. Path is `\myiseries\qibm\ProdData\CA400\Express\Install\Image`
- Open/Start CWBINIMG.BAT, and it will start the iSeries Access for Windows Tailored Install wizard.

- Put this file somewhere where your users can access it (IFS, PC server...)



IBM Use PTFFORM to add new Service Pack to Tailored Install image



www.ibm.com/eserver/iseries/access/windows and select 'Service Packs'

PTFFORM only puts in fixes for code that is contained in image

iSeries Access for Windows (Client Access Express) (5722-XE1) Release Level	Latest Service Pack PTF Number	Server Maintenance	Date PTF was Available	Installed File Date	Target for Next Service Pack
V5R2M0	SI08894	Refer to Server Notes	June 20, 2003	08/05/02	October 24, 2003
V5R1M0	SI08389	Refer to Server Notes	May 8, 2003	05/06/01	November 21, 2003

Problems downloading a Service Pack?



New Redbook for iSeries Administrators

- Download it from www.ibm.com/eserver/series/access/windows
- IBM Form Number SG24-6939-00



Customer comment



iSeries Access for Windows V5R3 beta

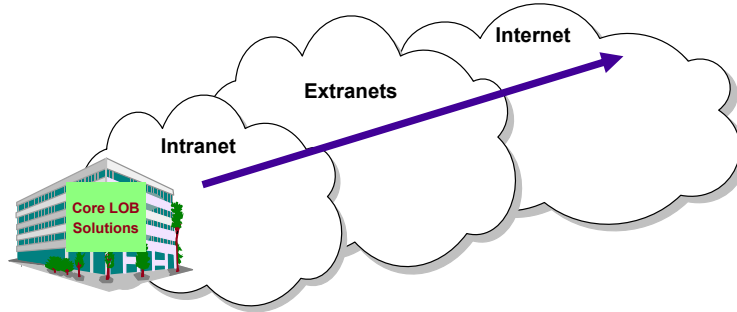
- I was able to quickly create a VB.NET data access program to read data from an iSeries table. The performance seemed great.
- I was also impressed with the improved performance of many of the Ops Nav system functions. For example, it used to take minutes to display the tables in a relatively small library, now it takes only seconds.
- I am using VPN to access our iSeries over the Internet using a cable modem.

Paul D. Olsen, Senior Systems Architect
Silvon Software, Inc., Annapolis MD
The Enterprise Performance Management Company
www.silvon.com





Extend iSeries applications to the Web



Customers are looking for **no network desktop administration** and **easy access** to iSeries information:

- For a variety of desktop users
- For users with no iSeries skills

© 2004 IBM Corporation

IBM CONFIDENTIAL UNTIL ANNOUNCED

iSeries. mySeries.



Moving to Web and e-business



Customers want a new look on their iSeries and extend its information reach...

- **iSeries Access Family** provides alternatives so you can easily take your iSeries to the Web and e-business
 - This will help you solve pressing business problems quickly, practically, affordably -- with flexibility for the future
- **iSeries Access for Web** can be the instant 'window' to the iSeries
 - It provides completely customizable front page capability and tremendous function and flexibility
- **Host Access Transformation Server Limited Edition (HATS LE)** another instant 'windows' to the iSeries
 - You can provide 5250 access via a browser to users within minutes.



Top executive focus topic:
Get rid of those green screens!

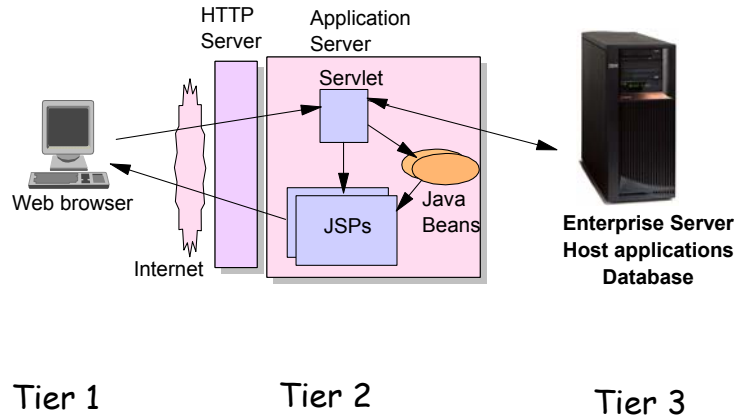
© 2004 IBM Corporation

IBM CONFIDENTIAL UNTIL ANNOUNCED

iSeries. mySeries.



First you need a web application server



© 2004 IBM Corporation

IBM CONFIDENTIAL UNTIL ANNOUNCED

iSeries. mySeries.



Web application server options



There are several Web applications servers that can run on iSeries:

- **WebSphere Portal - Express for Multiplatforms V5.0.2**
 - 750 CPW
 - 2 GB memory
 - **WebSphere Portal - Express Plus for Multiplatforms V5.0.2**
 - **WebSphere Application Server -- Express V5.1**
 - 300 CPW
 - 512 MB memory
 - Also WAS Version 5.1 Base and Network Deployment
 - **WebSphere Application Server Version 5.0 Express for iSeries**
 - 300 CPW
 - 512 MB memory
 - Also WAS Version 5.0 Base and Network Deployment
 - **WebSphere Application Server Advanced Edition Single Server V4**
 - **WebSphere Application Server Advanced Edition V4**
 - **ASF Tomcat (included in IBM HTTP Server for iSeries)**
 - 70 CPW
 - 256 MB memory
- The ASF Tomcat web application server is part of the no-charge IBM HTTP Server for iSeries (5722-DG1)

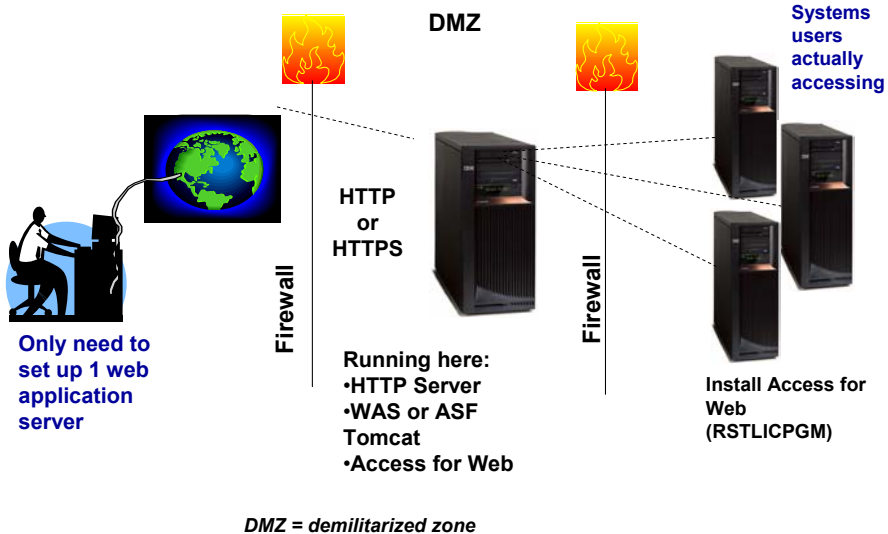
© 2004 IBM Corporation

IBM CONFIDENTIAL UNTIL ANNOUNCED

iSeries. mySeries.



Setting up your web application server



© 2004 IBM Corporation

IBM CONFIDENTIAL UNTIL ANNOUNCED

iSeries. mySeries.



Performance...???



- **Does running Access for Web and HATS LE affect server performance?**
 - Products like Access for Web and HATS LE don't put much strain on the system...
- **How does the web application server affect performance?**
 - If you have an older, under-powered iSeries, then performance may not be good...if you have a newer, bigger iSeries, then performance won't be an issue (unless you already are running your system at maximum capacity).
 - Use the **IBM eServer Workload Estimator** to see what performance will be if WAS is added to your system
- **Fine-tuning your web application server**
 - If you are running WebSphere Application Server, refer to Chapter 3 of the Buying and Selling Guide for WAS. It has many good tips for getting WAS to perform optimally.
 - Go to the iSeries WebSphere web page at <http://www.ibm.com/servers/eserver/iseries>. Select 'WebSphere' from Software and Solutions column.

© 2004 IBM Corporation

IBM CONFIDENTIAL UNTIL ANNOUNCED

iSeries. mySeries.



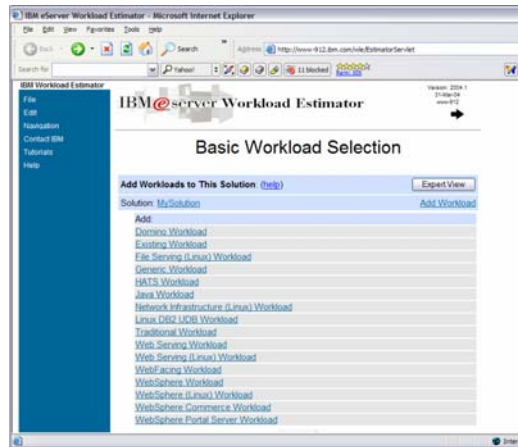
IBM eServer Workload Estimator



Go to iSeries web page at www.ibm.com/eserver/iseries then search on 'workload estimator'

Many different estimators you can run...

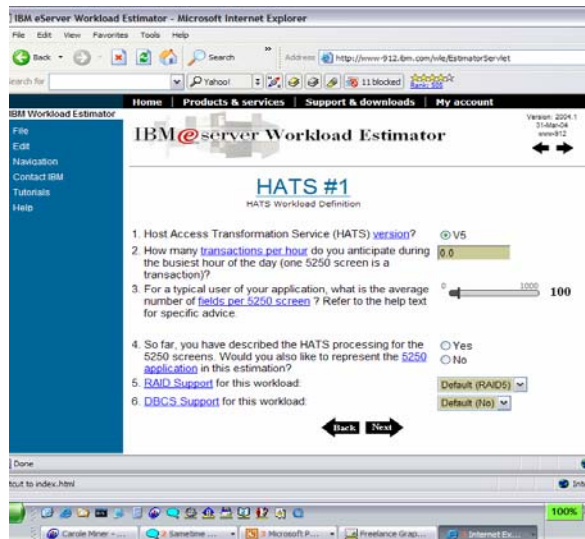
- Existing Workload
- WebSphere Application Server
- WebSphere Portal Server
- HATS
- WebFACING



HATS Workload Estimator



For 5250 workloads, the HATS workload estimator will be in the ballpark if using Access for Web 5250 emulator or HATS LE





iSeries Access for Web (5722-XH2)



`http://<myiseries>/webaccess/iWAHome`



What is iSeries Access for Web?



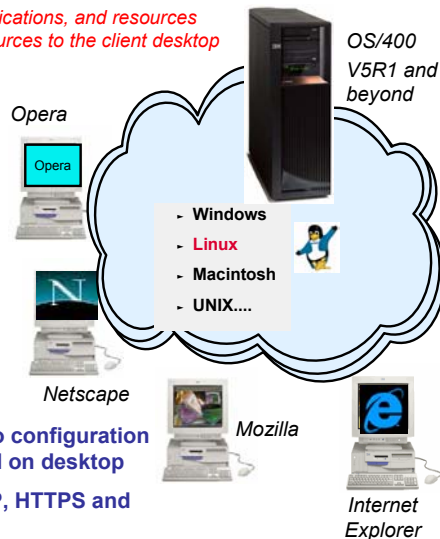
End users can leverage business information, applications, and resources across an enterprise by extending the iSeries resources to the client desktop through a web browser

Provides access to iSeries through a browser

- 5250 access
- Access to database, integrated file system, printers, output queues, jobs
- Can run batch commands and send/receive messages

It has the following advantages:

- Is server based
- Requires only a browser on the client, no configuration required at desktop, no applets installed on desktop
- Uses industry standard protocols - HTTP, HTTPS and HTML



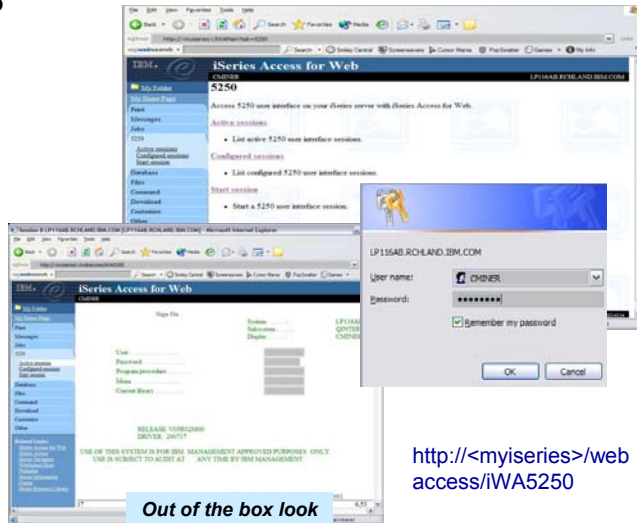


5250 display emulation



<http://<myseries>/webaccess/iWAMain?tab+5250>

- Can reconnect to a previously **active** session
- Can **configure** a session or work with previously configured sessions
- Can **start** a new 5250 session



<http://<myseries>/webaccess/iWA5250>



5250 Emulation Capabilities



- **Page up, page down, and function keys supported on:**
 - Microsoft Internet Explorer (version 5.0 and later), Netscape (version 6.0 and later), Mozilla
- **Can Assign unique device ID**
- **Screen auto-switches to 132 columns as needed**
- **Cursor positioning**
 - Ability to place cursor at non-input fields for cursor sensitive applications
- **Macros**
 - New 'initial macro' can be played immediately after a session is started. It is a way for users to **bypass the OS/400 sign-on screen** and perhaps have a specific host application started in their behalf.
- **Keypads**
- **Shortcuts to session configurations and macro definitions can now be created.**
 - You can pre-configure what another user or group of users can use for sessions and macros. You could then take away their ability to create sessions and macros and enable them to use only the ones you have created.
- **Active sessions can now be shared with other users and groups.**
 - This can be useful from a Help Desk perspective to be able to view what the end user is viewing.



Work with Printer Output Queue - Spoolfile



- My 'printer output'
 - Can view it
 - Or can select 'Work with' for more options

http://<myiseries>/webaccess/iWASpool

- Easy-to-use GUI for working with my printer output
 - Don't need to sign onto a 5250 session, and run commands to get to spool file

File Name	User Data	Creation Date/Time	Pages Per Copy	Copies	Status	Action	User	Job Name	Job Number	Number
QPIJOBLOG QPADEV0009	7:19:04	3:11 PM	2	1	Ready	View View as View PDF	CMINER	QPADEV0009	066872	
QPIJOBLOG QPADEV000V	7:20:04	9:04 AM	2	1	Ready	View View as View PDF	CMINER	QPADEV000V	087982	
QPIJOBLOG QPADEV000V	7:20:04	9:41 AM	2	1	Ready	View View as View PDF	CMINER	QPADEV000V	087983	
QPIJOBLOG CMINER11	7:26:04	9:56 PM	1	1	Ready	View View as View PDF	CMINER	CMINER11	088403	
QPIJOBLOG QPADEV0005	8:2:04	3:19 PM	2	1	Ready	View View as View PDF	CMINER	QPADEV0005	101974	



Convert Printer Output to PDF



- On-the-fly conversion of all printer output (SCS, AFP) to PDF
 - Convert it and display it in browser
 - Print it to any local or network printer
 - E-mail it
 - Put it in any Personal Folder
 - Move it to another print queue

Description	Part No.	Quantity	Price	Amount
Hunter 335	004956	1	\$67,900.00	\$67,900.00
Boat trailer	199234	1	\$1,900.00	\$1,900.00
Boat anchor	049999	1	FREE	\$0.00
Subtotal				\$69,800.00
Tax				7.00%
TOTAL				\$69,870.00



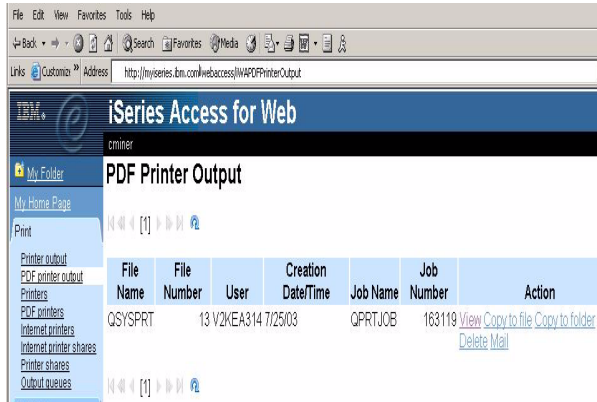
PDF Printer Output



<http://<myseries>/webaccess/iWAPDFPrinterOutput>

PDF Printer Output is a new tab

- It will display a list of PDF documents that have been converted by any of the PDF printers that you have access to
- Now users can go straight to the 'PDF Printer Output' tab and click to view the output, email it, copy it to a file or Personal Folder, or delete it



Requires InfoPrint Server (5722-IP1)



Infoprint Server for iSeries – 5722-IP1



- Go beyond 'print and distribute.' Go to the next level of automation to manage and present business information electronically.
 - Receive more value from your IBM iSeries investment. Extend core iSeries output capabilities that help enable you to reengineer business processes to improve service levels, decrease transaction costs, reduce paper flow and enhance competitive advantage with speed and flexibility.
- With Infoprint® Server, you can transform any standard iSeries output format and produce electronic output in Advanced Function Presentation (AFP™) or PDF.
 - This capability allows you to manage and distribute information via e-mail, Web or local printing.
 - And, you gain iSeries management of network output.
- Infoprint Server provides transforms for PCL, PostScript®, GIF, TIFF, JPEG and PDF data into AFP
 - So you can bring these documents into the iSeries for efficient and cost-effective handling.



Complimentary trial

Activate your 70-day evaluation of Infoprint Server for iSeries today. Unlock the trial from the OS/400® Version 5 release set of CDs. Learn more

http://www.printers.ibm.com/internet/wwwsites.nsf/vwwwebpublished/ipserverhome_i_ww



Use with Other Web Applications



Link to iSeries Access functions from other applications...

Use Access for Web Printer Output from Webfacing, HATS, HATS LE...

Has a link to iSeries Access for Web Printer Output



Notes: Add Access for Web PDF link to HATS LE



Edit your template to include linking to iSeries Access for Web Printer Output so users can see/print their jobs. The easiest way to modify your template is to open the HATS LE Admin Console, click "Advanced", select your template and click "Edit".

Note the circled additions put in the template...

Further down in the template note the circled additions added:

```
<!DOCTYPE HTML PUBLIC "-//W3C//DTD HTML 4.01 Transitional//EN">
<HTML>
<% @ page import="java.util.*, com.ibm.hats.common.*" %>
<% @ page language="java" contentType="text/html; charset=UTF-8"%>
<% @ taglib uri="WEB-INF/classes/tld/hats.tld" prefix="HATS" %>

<HEAD>
<title><HATS:TemplateSetting name="PAGE_TITLE"
caption="%PAGE_TITLE_FIELD"
defaultValue="%WELCOME_TO_MY_SITE_MSG" type="string"
helpID=""" configurable="true" priority="1" percentFill="100" /></title>
<HATS:Util type="baseHref" />
<script type="text/javascript" language="javascript">
function goToURL(url) {
    document.location.href = url;
}
</script>
<META name="GENERATOR" content="IBM WebSphere Studio">Add
the following lines:
```

```
<CENTER>
<TABLE height="100%" cellpadding="3" cellspacing="3" border="0"
width="100%">
<TBODY>
<TR>
<TD nowrap width="145">
<BR>
<BR>
<BR>
<BR>
<BR>
<BR>
<BR>
<BR>
<BR>
<BR>
<BR>
<BR>
<BR>
<BR>
<BR>
<BR>
<BR>
<BR>
<BR>
<BR>
<HATS:ApplicationKeypad>
<input type="button" class="ApplicationButton" value="Manage Spool Files"
onClick="goToURL('http://myseries/webaccess/WASpool')"/>
</TD>

```



Integrates with desktop user's email server



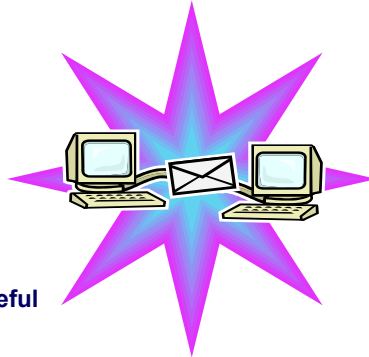
Can send results to a recipient with status sent to sender for:

- A database (SQL) action
- CL command
- File command
- PDF view of print information

Sent as an attachment to the 'email'

A one-step way to distribute information across the network, and particularly useful when recipient is:

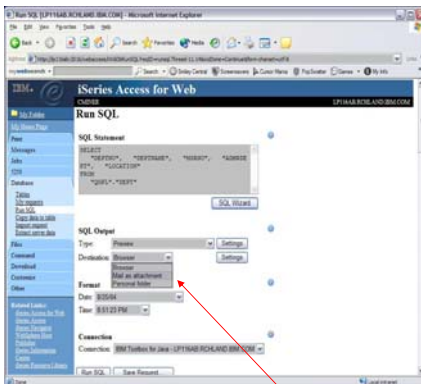
- Not an iSeries user
- Does not have access to a web browser



Users can easily email results

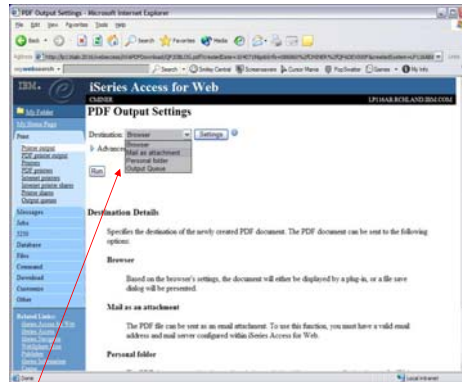


'Mail' option displays for function of Access for Web that supports 'Mail'



Database request

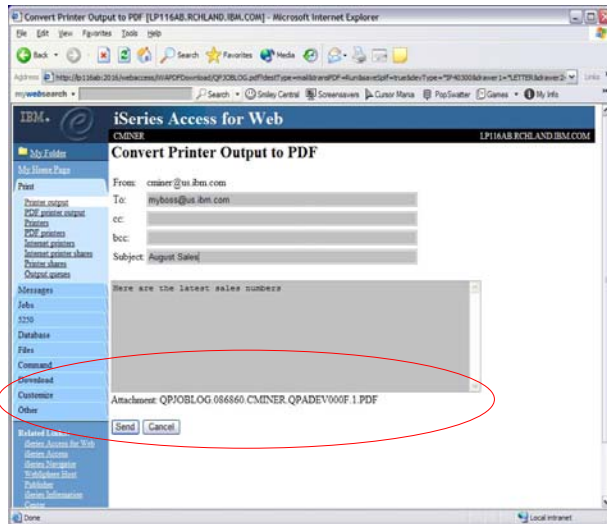
Mail output



Working with PDF printer output



Send your e-mail



Your email address plugged in for you...

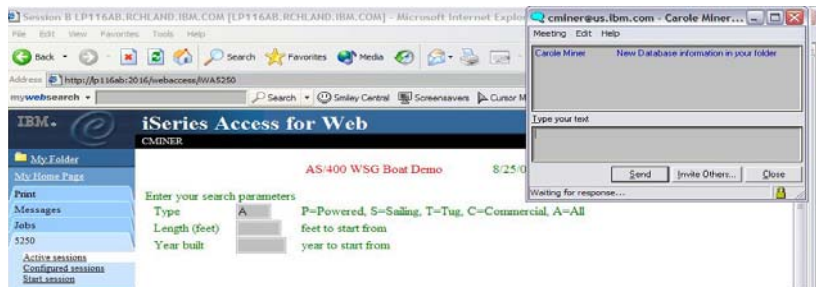
...see PDF attachment there...



Integration with Lotus Sametime – V5R3



- Receive Sametime messages:
 - When something is added to 'My Folder' -- this could be someone has put something new in my folder or a database or CL command request that I previously submitted has completed
 - The administrator/system operator has sent a break message



You must have a Sametime Server installed in your network and accessible from your iSeries. Sametime is an add-on product to Lotus Notes.



Database functions



Easy-to-use GUIs for working with the iSeries database

- **Tables**
 - View contents of a table using Quick View
 - Add or update records using 'Insert and Update'
 - Perform actions without having knowledge of SQL and its syntax
- **List previously saved requests**
 - Run or Edit Requests
 - Copy, Delete, and Rename actions
- **RUN SQL using SQL Wizard**
- **Exchange spreadsheet data with iSeries**
- **Import existing Client Access Express for Windows Data Transfer requests**
- **Extract Server data**



Run Requests



- You could give users or groups of users some database requests that you have created for them.
- They can only run these specific requests

Request	Description	Action	Shortcut	Created By	Access
Accounting Programs		Run	No	cmminer	cmminer
Fill out timecard		Run	No	cmminer	cmminer
Shortcut4		Run	Yes	yesi	*PUBLIC
Shortcut5		Run	Yes	yesi	*PUBLIC
Shortcut6		Run	Yes	yesi	*PUBLIC
Shortcut to Accounting Programs		Run	Yes	cmminer	accounting
Shortcut to Fill out timecard		Run	Yes	cmminer	warehouse



Upload Data



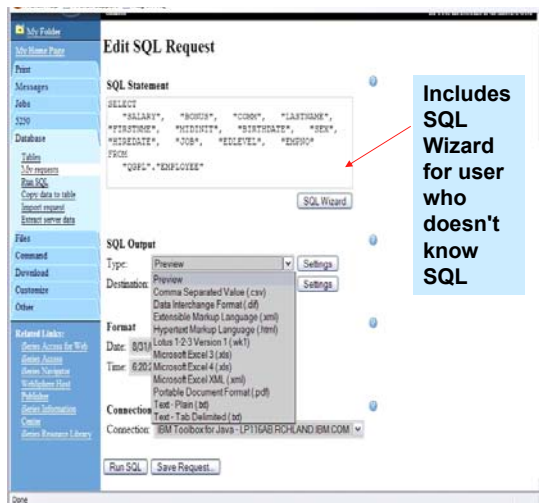
- Upload data from a variety of file types
 - Excel, XML, Lotus, etc
- Put into iSeries database
 - 'Replace' contents of table
 - 'Append' to existing data
- If no table exists on the iSeries, you will get a wizard to help you create a new table



Run SQL



- Run SQL allows you to dynamically run SQL statements
 - Could copy/paste complex SQL statements in here...
- Variety of output types
 - PDF, Excel, 1-2-3, XML, etc
- Destination
 - Browser
 - Mail as attachment
 - Personal Folders
- Can save request
 - My Requests, Give Shortcut to others



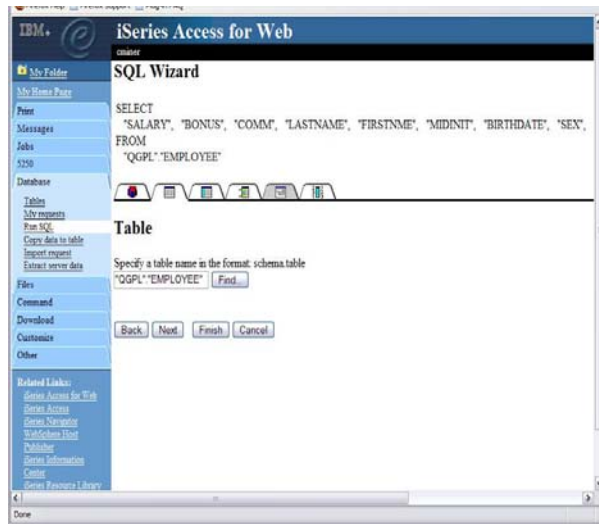


SQL Wizard



SQL Wizard enables you to:

- Select tables
- Select which columns to return
- Add conditions to your select statement
- Select the columns by which you want the data sorted



Dynamic Queries – V5R3



• SQL Wizard now supports dynamic database queries

- Contains the ability to generate SQL statement with markers for conditional values
- For example, an Administrator might build a query to retrieve some particular customer information, then when the end user runs the query a prompt would appear for user to key in 'customer name', 'customer number', etc.

Request	Description	Action	Shortcut	Created By	Access
Accounting Programs		Run Copy Delete Rename Create shortcut Edit	No	cmrtr	cmrtr
Employee Output	History	Run Copy Delete Rename Create shortcut Edit	No	cmrtr	cmrtr
Fill out timecard		Run Copy Delete Rename Create shortcut Edit	No	cmrtr	cmrtr
Find Employee Record		Run Copy Delete Rename Create shortcut Edit	No	cmrtr	cmrtr
Find Employee Record		Run Copy Delete	Yes	cmrtr	*PUBLIC



The best way to learn about iSeries Access for Web is to try it!



Access the following web site through your browser:

- <http://iseriesd.dfw.ibm.com/webaccess/iWAHome> (case sensitive)
- This is an IBM iSeries server in Dallas

Use the following User ID and password to sign into the EXPERIENCED USER page:

- User ID of WACUST (or try WUSER)
- Password of GUEST1 (a one, not an L)

This shows the basic look of Access for Web as we ship it. You can try various functions -- including working with printer output and the options we provide. You can click on the 5250 tab, sign onto the iSeries, then start an RPG application called BOATS and run it.

Start up a different another browser session to same url address above, and use the following User ID and password to sign into the Access for Water INEXPERIENCED USER page:

- User ID of BOATADMIN
- Password of ADMIN1BOAT (a one, not an L)

This is an example of how a customer might design a web page for their use. You will see that an end user could start the same BOATS application by clicking on the 5250 session -- or if they had used WebFacing or Host Publisher they could run the application with them. So click on all 3 links and see the same application in different views. You will also see other links that would let a user work with spoolfile information, work with IFS, run database requests, etc..

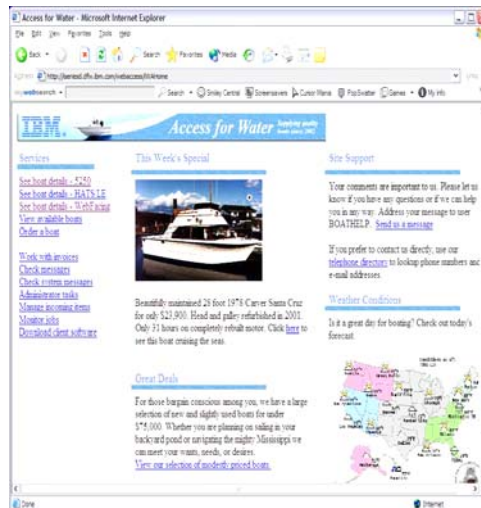


Demo page – ‘window’ to iSeries



See integration with other products

- IBM Telephone Directory (that ships with all WebSphere Application Server orders) integrated into front page
- Get printer output from iSeries spool file as a PDF
- Get information out of iSeries database
- Run a movie that is stored in iSeries IFS





Why use iSeries Access for Web?



Start simple, grow fast...

Any iSeries customer -- with any hardware model - can quickly get started working in a Web environment

- If your system hasn't got the capacity to run WAS, they you can easily install the ASF Tomcat web application server. ASF Tomcat runs on hardware with 70 CPW and 256 MB memory

Any iSeries customer -- with little Web experience - can easily get started working with e-business

- iSeries Access for Web is simple to install and configure
- No programming skills required to set it up

Any iSeries customer -- without training or setup on users' desktops - can extend the reach of their resources to end users

- Use customize facility to set up view ('window') to iSeries and to control access to various iSeries resources
 - all built around OS/400 user profiles

A great first step to get iSeries into e-business



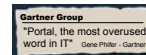
Use 'out of the box'



WebSphere Portal Offerings for i5/iSeries



- **Flexible portal licensing (per-user OR per-CPU pricing)**
 - Both per-user & per-cpu pricing can be used on Intranets, Extranets & Internet
 - iSeries Enterprise Edition for i825/870/890 includes 20 per-user licenses of Plus
- **Simplified portal installation & set-up with wizards**
 - Portal image included in Virtual Media Image (VMI) for easy installation
 - Easy-to-use wizard gives you a production-ready portal server
- **New integrated portal function**
 - Document management - store, categorize, search, subscribe, review and approve
 - Productivity components – view/edit documents, spread sheets and presentations
 - Collaboration Center in WebSphere Portal - Express Plus
- **Simplified portal administration**
 - Intuitive interface and fewer steps required for frequently used functions such as adding a user and assigning access privileges



Available for iSeries

• January 2004

• WebSphere Portal – Express for Multiplatforms V5.02

• WebSphere Portal – Express Plus for Multiplatforms V5.02



Use Access for Web with Portal

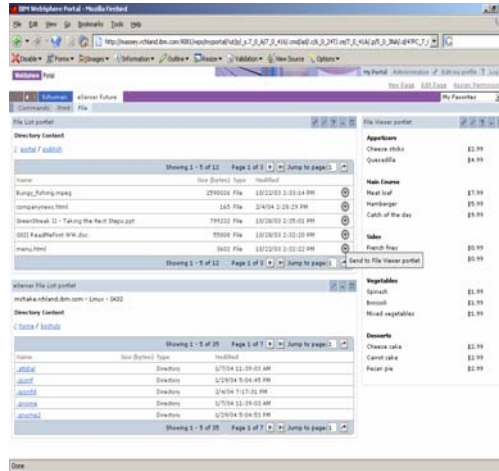


- **Support for WebSphere Portal Express and Express Plus**

- Thee V5R3 Access for Web product (with software fixes) runs as a portlet on both versions of WebSphere Portal.

- **Most functions can run as portlets**

- 5250 emulation runs in a portlet window
 - Other functions of Access for Web can individually be assigned to a portlet window as well.
 - For example, one might have the 'Database' function in one window and 'Print' function in another windows



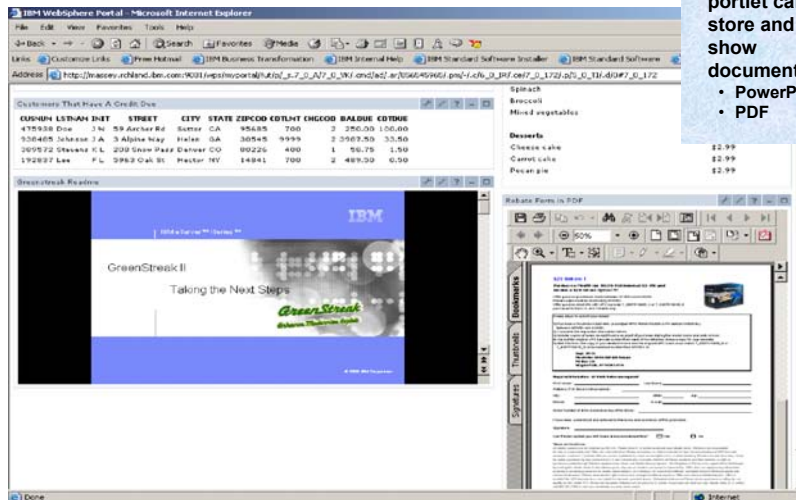
iSeries Access for Web running in a portal...



Simple Content Publishing

Using 'IFS' portlet can store and show documents

- PowerPoint
- PDF



iSeries Access for Web

- I read your article in the iSeries400 experts journal (*). This article was very informative and inspired us here at Guelph Hydro to implement the product. We had the product up and running in a day and configured our security using the tools available with the product. **I can confidently say that this product is definitely “Cool” and we have already taken advantage of the powerful features of this product. This is a definite “got to have” product for any serious iSeries shop.**
- You can give your development team two thumbs up on this one.
- Thanks again.

Mike Joaquin
Guelph Hydro Electric Systems Inc
Guelph, Ontario Canada



(*) "A Peek at the Future: iSeries Access for Web" appeared in iSeries 400 Experts Journal, November/December 2003 edition

- **Host Access Transformation Services Limited Edition**
 - 5250 emulator that is used through a browser
 - Servlet - entire product runs on web application server, nothing to install or configure at the desktop
- **Available only in iSeries Access Family, 5722-XW1**
 - Automatically ships with 5722-XW1 orders
 - First made available 6/30/03
 - No additional charge for HATS LE (beyond the cost of 5722-XW1)



A quick and easy way to put iSeries applications on the Web



HATS LE



Runs in a browser

- Delivers HTML to the desktop
- Only software needed on the client is a Web browser
- Uses browser SSL features

Works on all 5250 screens

- Stock Templates included so you can quickly personalize your web page to your company look and feel

Screens are converted on the fly, in real time

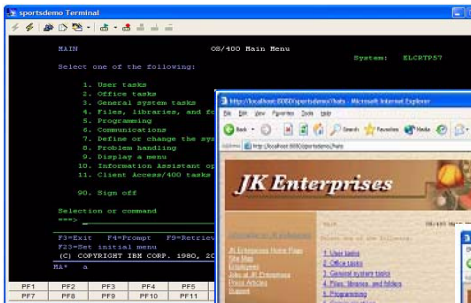
- Selection lists can be converted to hot links, buttons, drop-down menus, or option lists (radio buttons)
- PF keys are can be converted to buttons or hot links

No programming necessary

- Doesn't break if changes are made to 5250 application
- No need to access source code



HATS LE: Real-time Screen Conversion



Traditional green screen



Drop-down menu



HATS LE on-the-fly conversion using customer-provided HTML (logo and graphics)



HATS LE handles 'Subfiles'



HATS LE has special default code to handle 'subfiles'.

- Ran command 'STRQM'
- Selected 'Work with Query Manager Tables'

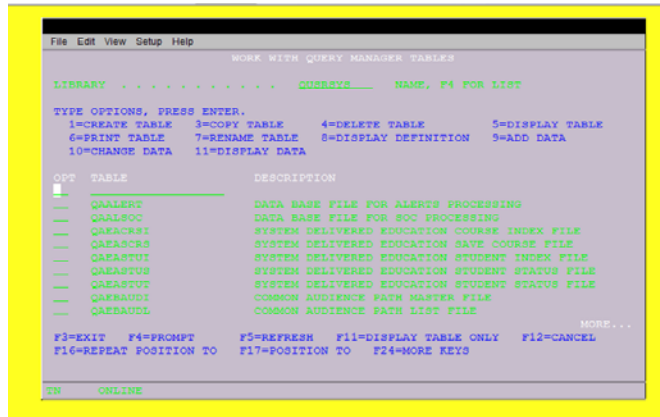
HATS LE was configured to show these tables as pull downs



Typical emulator handling of Subfile fields

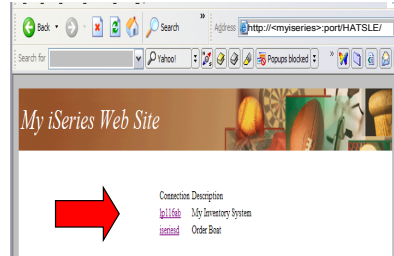


- These same screens views by another browser-based 5250 emulator



• **New features in HATS LE V5 (available on V5R2 or V5R3)**

- Ability to configure multiple iSeries connections – users then select from a menu which iSeries server they wish to connect to



- Improved default transformation features:

- Improved Subfile rendering
- Improved selection list rendering
- Detect 'More...' option on 5250 screen
- Automatic table detection
- Support for reverse image

- New templates and additional support to work with new templates

Demo web site...connect to iSeries using HATS LE

 <http://iseriesd.dfw.ibm.com:2034/HATSLE/>

- Note that Workstation ID also starts with WUSER for each session → used HATS LE Workstation ID wildcard support

- Key in user-id of **WUSER (or WACUST)**
- Key in password of **GUEST1**
 - that is a one, not an L





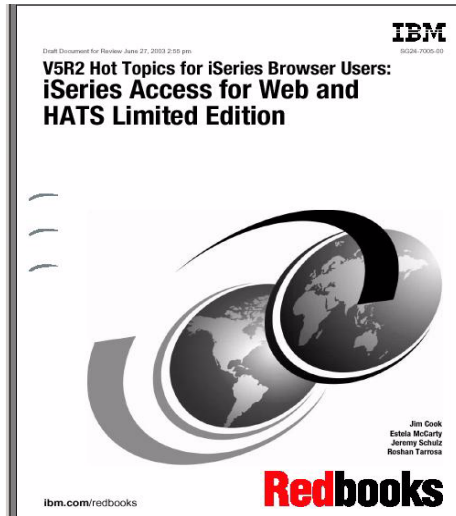
Redbook

New Redbook...

SG24-7005-00

Download it from iSeries
Access Web page at

www.ibm.com/eserver/iseries/access



iSeries Access for Wireless 5722-XP1





Application Flexibility, Innovative Technology



Integrated package of wireless functions and middleware

- **Management Central-Pervasive**
 - Functional enhancements for V5R2, including worldwide enablement
- **iSeries Toolbox for Java Micro Edition**
 - Provides access to iSeries through Java™ classes running on the devices, and ability to write Java Toolbox applications with the customized look for the devices
- **JDBC Micro Edition**
 - Access DB/2 on the iSeries from Java running on a wireless device, or write full-featured JDBC applications (transactions, stored procedures, DB triggers, etc.)



iSeries Access for Wireless is a relatively new member of the iSeries Access Family

Delivered with OS/400 V5R2 at no additional cost

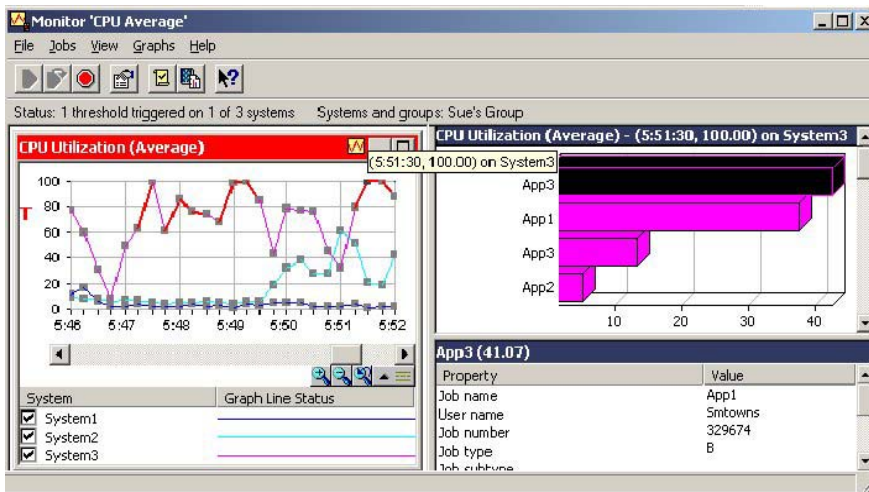
Delivers strong features to enhance development of wireless applications for use with the iSeries



Management Central Pervasive – demo



a 'System Monitor' has just reached a threshold





Connectivity solutions...



iSeries Access Family is investing in a variety to connectivity options to meet customer needs:

Linux (native)



★ iSeries Access for Linux

Windows (native)



★ iSeries Access for Windows

Wireless



★ iSeries Access for Wireless

Browser-based



★ iSeries Access for Web



★ HATS LE

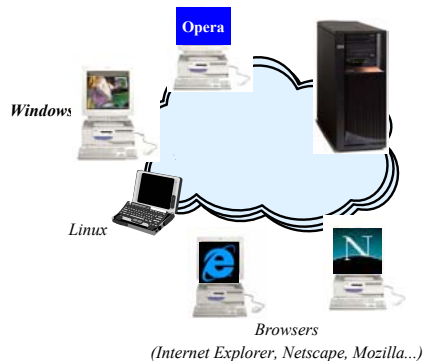


Summary



The way to work with your iSeries is through an easy-to-use and powerful GUI..

- Your desktop solutions will 'look great'...
- You have leading technology at your fingertips that bring exceptional productivity benefits...
- You can easily expand your business to the Web



As one customer so aptly said a *'definite "got to have" product for any serious iSeries shop'*





Trademarks and Disclaimers



© IBM Corporation 1994-2004. All rights reserved.
References in this document to IBM products or services do not imply that IBM intends to make them available in every country.

The following terms are trademarks of International Business Machines Corporation in the United States, other countries, or both:

AS/400	e-business on demand	OS/400
AS/400e	IBM	
eServer	IBM (logo)	
	iSeries	i5/OS

Rational is a trademark of International Business Machines Corporation and Rational Software Corporation in the United States, other countries, or both.
Java and all Java-based trademarks are trademarks of Sun Microsystems, Inc. in the United States, other countries, or both.
Microsoft, Windows, Windows NT, and the Windows logo are trademarks of Microsoft Corporation in the United States, other countries, or both.
Intel, Intel Inside (logos), MMX and Pentium are trademarks of Intel Corporation in the United States, other countries, or both.
UNIX is a registered trademark of The Open Group in the United States and other countries.
SET and the SET Logo are trademarks owned by SET Secure Electronic Transaction LLC.
Other company, product or service names may be trademarks or service marks of others.

Information is provided "AS IS" without warranty of any kind.

All customer examples described are presented as illustrations of how those customers have used IBM products and the results they may have achieved. Actual environmental costs and performance characteristics may vary by customer.

Information concerning non-IBM products was obtained from a supplier of these products, published announcement material, or other publicly available sources and does not constitute an endorsement of such products by IBM. Sources for non-IBM list prices and performance numbers are taken from publicly available information, including vendor announcements and vendor worldwide homepages. IBM has not tested these products and cannot confirm the accuracy of performance, capability, or any other claims related to non-IBM products. Questions on the capability of non-IBM products should be addressed to the supplier of those products.

All statements regarding IBM future direction and intent are subject to change or withdrawal without notice, and represent goals and objectives only. Contact your local IBM office or IBM authorized reseller for the full text of the specific Statement of Direction.

Some information addresses anticipated future capabilities. Such information is not intended as a definitive statement of a commitment to specific levels of performance, function or delivery schedules with respect to any future products. Such commitments are only made in IBM product announcements. The information is presented here to communicate IBM's current investment and development activities as a good faith effort to help with our customers' future planning.

Performance is based on measurements and projections using standard IBM benchmarks in a controlled environment. The actual throughput or performance that any user will experience will vary depending upon considerations such as the amount of multiprogramming in the user's job stream, the I/O configuration, the storage configuration, and the workload processed. Therefore, no assurance can be given that an individual user will achieve throughput or performance improvements equivalent to the ratios stated here.

Photographs shown are of engineering prototypes. Changes may be incorporated in production models.