



Session: 402066 / 52CL

iSeries. mySeries.

Administration of iSeries Access for Windows - Advanced Tips

Jeff Van Heuklon
jjvan@us.ibm.com

© Copyright IBM Corporation, 2004. All Rights Reserved.
This publication may refer to products that are not currently available in your country. IBM makes no commitment to make available any products referred to herein.

iSeries. mySeries.



Agenda

- V5R3 changes
- iSeries Access for Windows Install/Upgrade
 - Tailored Install
- Service Packs
 - Check Service Level
- Silent Install
- Install and Service Pack Tips
- iSeries Navigator Application Administration
- iSeries Access for Windows Signon Information
 - iSeries Connection Settings
- Additional Administration Tools

© 2004 IBM Corporation

iSeries. mySeries.



V5R3 changes

- Migration from 5763XD1 Client Access for Windows 95/NT no longer supported
- Installing on Windows 95, 98, Me is no longer supported
- Upgrading from V5R4 Express is no longer supported



iSeries Access for Windows Install/Upgrade



iSeries Access for Windows Install/Upgrade

Media Types

- iSeries licensed program 5722XE1 V5R1M0, V5R2M0, V5R3M0
 - Install image placed in \QIBM\ProdData\CA400\Express\Install\Image (or \QIBM\ProdData\Access\Windows\Install\Image in V5R2 via symbolic link)
 - Installable via IBM iSeries Support for Windows Network Neighborhood (iSeries NetServer)
 - Useful for automatic upgrade and maintenance of a network of clients



iSeries Access for Windows Install/Upgrade

Tailored Install

- Limit components available for end-users to install
- Tailored Install GUI - looks like Custom Install
 - cwbinimg.bat from original installation image
 - Creates a tailored image based on a subset of the original image into the specified target directory
 - Omit components that you do not want in your tailored image
 - Component prerequisites and dependencies are enforced to ensure that a valid installable image is created



iSeries Access for Windows Install/Upgrade

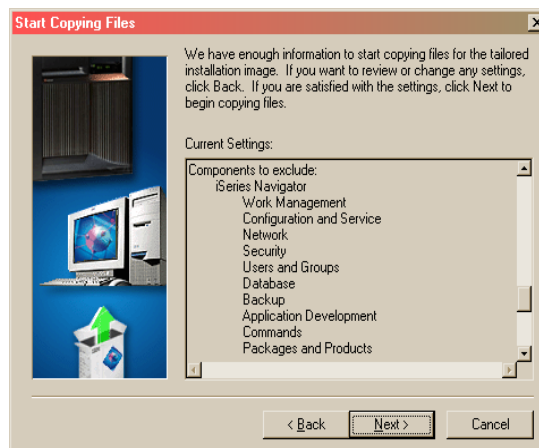
Tailored Install ...

- Installs from a tailored image will dynamically build a component selection list based on the .cab file content in the installation image
- Use i5/OS authorities to restrict users or groups from install images that they should not be installing/upgrading from



iSeries Access for Windows Install/Upgrade

Tailored Install ...





iSeries Access for Windows Install/Upgrade

Installation Types

- **New installation of iSeries Access for Windows**
 - If done from the iSeries using iSeries NetServer - automatically sets end-user up properly for later service packs and upgrades
 - Recommend using UNC name (\\as400\QIBM\...\Install\image\setup.exe)
 - Typical, PC5250 User, Custom, Full (Full is useful with tailored install images)
 - If done from iSeries, can also install Secure Sockets Layer (SSL), iSeries Navigator Plug-ins



iSeries Access for Windows Install/Upgrade

Installation Types ...

- **Upgrade Install**
 - From one release of iSeries Access for Windows to the next release
 - Intend to always support N-2 to N
 - Default is to upgrade to new release with same set of components
 - Can add additional components during upgrade
 - Can remove existing components during upgrade process
- **Re-Install same release**
 - Functionally very similar to upgrade install
 - Will install over a service pack level, returning end-user to same level as installation image



Service Packs

© 2004 IBM Corporation

iSeries. mySeries.



Service Packs

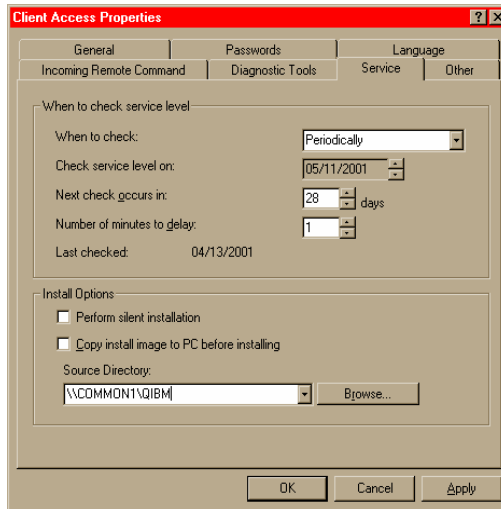
Service ...

- **iSeries PTF for 5722XE1**
 - **SNDPTFORD (iSeries CD media shipped)**
 - **Internet PTF Delivery (iPTF) (iSeries CD media shipped)**
<http://www-912.ibm.com/>
 - **Periodically included in iSeries cumulative PTF packages**
 - **Strategic way to handle service for end-users - automatic Check Service Level**
 - **Check Service Level can also service iSeries Navigator Plug-ins, Secure Sockets Layer (SSL)**
 - **Use service Source Directory of \\netserver-name\QIBM to avoid assigning a persistent drive letter mapping**

© 2004 IBM Corporation

iSeries. mySeries.

Service ...



Service Packs

Service ...

– FTP Downloads

(<http://www1.ibm.com/servers/eserver/ieseries/access/casp.htm>)

- Can be placed on a server (including iSeries IFS) and installed via Check Service Level
- Don't place in the original iSeries LPP directory (... \Install\Image) because that will interfere with APYPTF
- Quicker to obtain than PTF version, but not as integrated into the overall iSeries Access for Windows service strategy
- Suggest using FTP download for validation testing, then obtain PTF for distribution to enterprise



Service Packs

Service ...

– FTP Downloads

(<http://www1.ibm.com/servers/eserver/iseries/access/casp.htm>)

- Can download a large single .exe or save transmittal time by only downloading the service pack files for the iSeries Access for Windows components that your organization uses
- PTFFORM.EXE in FTP /subcomps directory can be used to overlay a tailored install image - identical to set of files in the PTF version

© 2004 IBM Corporation

iSeries. mySeries.



Notes: Tailored Install

After your initial installation and configuration, you can create tailored installation images containing only the components you specify. You can then easily distribute these installation images across your network with little user interaction using the silent installation/migration option. Additionally, you can restrict users' access to functions by selecting which components to include in an installation. Several common methods are:

Creating a tailored installation image - you can create a custom installation image by excluding the unwanted components from a master installation image. You can then use the customized installation image for installations across your network.

Installing or migrating silently - create a response file that contains a record of your responses to prompts during an installation. You can then use this response file to control duplicate installations that do not require any user interaction.

Creating a tailored installation image of iSeries Access for Windows

You may want to control which iSeries Access for Windows components your users can install. One way to do this is by excluding selected components from an installation image, and then distributing this tailored installation image to your users. The Tailored Installation Image wizard provides a simple interface for this function. You can start the tailored installation wizard from the iSeries Setup and Operations CD, or by navigating to the installation image directory, \\QIBMProdData\CA400\Express\installimage, and entering cwinbimg.

Note: If your iSeries server has multiple iSeries Access for Windows secondary languages, you can use any of the installed secondary languages, or the primary language on the iSeries server, as the primary language for the new installation image. This is not available if you are running the wizard from the CD, because the CD will not contain any secondary languages.

Distributing the installation image

The wizard allows you to specify where you want to create the tailored installation image. This location must be an empty directory, (you cannot overwrite a previous installation image) and must not be the root directory. Also, only complete installation images contain the program that creates tailored installation images. The wizard is not copied onto the user's PCs.

Servicing the installation image

Any tailored installation images are not updated when Program Temporary Fixes (PTFs) are applied to or removed from the iSeries server. You must re-create the installation image to get service pack updates. You can re-create your installation image quickly and with little user interaction by creating a response file and using it to silently re-create your tailored installation image with the service pack. See Installing Client Access Express silently for more information.

For information on tailored install images see: <http://publib.boulder.ibm.com/pubs/html/as400/infocenter.html>
Administering -> Installation and Service Administration -> Creating a tailored installation image

© 2004 IBM Corporation

iSeries. mySeries.



Servicing the Tailored Install Image

- **Problem**
 - When you create the Tailored Install, the Program Temporary Fixes (PTFs) in the QIBM directory are also applied to the newly created tailored image.
 - However, this tailored installation image is not updated when future PTFs are applied to or removed from the iSeries server
 - Because they are in a file unknown to OS/400
- **Solution**
 - You can recreate the Tailored Install image by pointing back at QIBM, re-running Tailored Install, and storing on top of your old image.
 - Go to iSeries Access web site and download PTFFORM. This can be used to your Tailored Image.
 - Only updates to functions in your tailored image will be updated. Thus users will not be able to run Selective Install and get additional Access for Windows functions from that directory.
- **For information on Tailored Install images see:**
 - <http://publib.boulder.ibm.com/pubs/html/as400/infocenter.html>
 - Find 'iSeries Access'. Then follow path of 'Administration', then 'Installing or migrating multiple PCs', to 'Tailored Install'

© 2004 IBM Corporation

iSeries. mySeries.



Use PTFFORM to add new Service Pack to Tailored Install image

PTFFORM only puts in fixes for code that is contained in image

PTFFORM.EXE

subcomps | tailored | Downloads.txt | READMESP... | SI08894.EXE

- To see service packs for every release, refer to [Service Pack History for All Releases](#).
- For problems downloading a service pack, click [here](#).
- For support information on iSeries Access and the Microsoft Windows operating systems, click [here](#).

Operations Console users: [known problems with Operations Console and Windows 2000 Service Pack 4](#)

iSeries Access for Windows (Client Access Express) (722-NE3) Release Level	Latest Serv Pack PTF Num	Server Maintenance	Date PTF was Available	Installed File Date	Target for Next Service Pack
V5R2M0	SI08894	Refer to Server Notes	June 20, 2003	08/05/02	October 24, 2003
V5R1M0	SI08389	Refer to Server Notes	May 8, 2003	05/06/01	November 21, 2003

<http://publib.boulder.ibm.com/pubs/html/as400/infocenter.html>

© 2004 IBM Corporation

iSeries. mySeries.



Notes: Adding future Service Packs to Tailored Image

PTFFORM.EXE

PTFFORM is intended to update a copy of the original image or for a Tailored Image that you have created using cwbinimg.bat. When you download the Service Pack file from the web site and run it, it automatically expands into a temporary directory, asks you where the install image is that you'd like to update to the new service level, updates that image, then cleans up it's temporary directory. .

You should not use PTFFORM to the original image on your iSeries in QIBM\ProdData\Access\Windows\Install\limage. It is better to obtain the official Service Pack PTF from Service or use a CumPkg; then update the original image using the LODPTF and APYPTF commands. LODPTF/APYPTF update the DSPPTF information on your iSeries that is used for fix management and service. If you use PTFFORM instead, it would work. But DSPPTF 5722XE1 on your iSeries will have no knowledge of your update and a future CumPkg could backlevel you..

Getting Service Pack PTFs

You can order a Service Pack CD from IBM. It will take a few days to receive this CD, and then you need to have someone in Operations put the CD in the iSeries optical drive.

A new feature in OS/400 V5R2 is that you can order a Service Pack CD electronically, and place it directly in the IFS in a Virtual Optical Device. You can then install from this Virtual Optical Device just like you would from the real iSeries Optical Device. Basically what you are doing is:

Downloading a CD image containing your PTF and making the IFS look like a CD drive to install from.

To do this you must prearrange with IBM Service. Service will place the CD image in a special FTP directory for 48 hours (at most). You can then FTP the file to your iSeries. For more information, go to:
<http://www-912.ibm.com/supporthome.nsf/document/27321011>



Also use normal procedures to install Service Pack on your iSeries

The screenshot shows a web browser window with the address <http://www-1.ibm.com/servers/eserver/iseries/access/casp.htm>. The page title is "iSeries Access Connection Information". The main content area is titled "Latest Service Packs for Supported Releases" and contains a table with the following data:

iSeries Access for Windows (Client Access Express) (5722.XE1) Release Level	Latest Service Pack PTF Number	Server Maintenance	Date PTF was Available	Installed File Date	Target for Next Service Pack
V5R2M0	SI08894	Refer to Server Notes	June 20, 2003	08/05/02	October 24, 2003
V5R1M0	SI08389	Refer to Server Notes	May 8, 2003	05/06/01	November 21, 2003

Below the table, there is a section titled "Problems downloading a Service Pack?" with a link to a Knowledge Base Article: [Problems Downloading Files from the FTP Site, including Client Access Service Packs.](#)

Additional text on the page includes:

- To see service packs for every release, refer to [Service Pack History for All Releases.](#)
- For problems downloading a service pack, [click here.](#)
- For support information on iSeries Access and the Microsoft Windows operating systems, [click here.](#)
- Operations Console users: [Known problems with Operations Console and Windows 2000 Service Pack 4](#)

The left sidebar contains navigation links such as "Information APARs (Support Statements)", "FAQs", "Windows(R) Operating Systems (2000/Me/XP/etc)", "Technical Support", "Articles", "IBM Library", "Express Toolkit", "iSeries Information Center", "Related links:", "iSeries Navigator", "Operations Console", "iSeries ODBC Driver for Linux", "Additional Links", "Feedback", and "How to buy".



New Feature for OS/400 V5R2 Users...

- Use IFS as a Virtual Optical Device
 - You can obtain a Service Pack CD electronically and place it directly in the IFS in a Virtual Optical Device (just like a real iSeries Optical Device)
 - You can then download a CD image of the PTF and make your IFS look like a CD Drive
 - You can install the PTF from this CD image thus eliminating the need to either use:
 - iPTF - will send you a CD because image is too big to download over Internet.
 - SNDPTFORD (Send PTF Order) - will send you a CD because image is too big to download over Internet
- Install the iSeries Navigator plug-in
 - Required one time only if you choose to download using Operations Navigator
- Download the self-extracting .exe file
 - Run the .exe file and install the files in the default directory:
 - jvopnav\com\ibm\as400\opnav
- Consider using software managers called "download managers" to allow you to resume interrupted or failed downloads, such as:
 - GetRight®
 - Go!Zilla
 - Netzip
 - SmartDownload
- For more information, go to:
 - <http://www-912.ibm.com/supporthome.nsf/document/27321011>

This option of ordering the official Service Pack PTF may be a more attractive alternative than downloading the Service Pack PTF from the iSeries Access webpage

© 2004 IBM Corporation

iSeries. mySeries.



Notes: Installing fixes from the FTP Server

Before installing fixes from the Download Server

- Before you install the fixes in your package, do the following.
 - Have a copy of the e-mail confirming your order available for reference.
 - Install the Operations Navigator plug-in. (Required one time only if you choose to download using Operations Navigator)
 - Download the self-extracting .exe file.
 - Run the .exe file. You should install the files in the default directory: jvopnav\com\ibm\as400\opnav.
- Consider using software managers called "download managers" to allow you to resume interrupted or failed downloads. Although IBM does not endorse any third-party download managers, some popular ones include the following.¹
 - GetRight®
 - Go!Zilla
 - Netzip
 - SmartDownload
- Follow these steps to download the fixes
 - Decide whether to download the fixes directly to IFS (Integrated File System) on the iSeries or to a PC.
- With V5R2, you have two choices.
 - You can use image catalogs, and download the fixes directly to IFS on the iSeries.
 - Or, you can burn CD-ROMs on a PC.

Without V5R2, you must burn CD-ROMs on a PC.

Note: You will get better performance when burning the CD-ROMs if you put the files on your local PC drive.

Select one of the following three methods to download the fixes.

- Use the FTP command from OS/400
- Use a Web browser
- Use Operations Navigator
- To download the fixes, follow the instructions provided in your e-mail for whichever method you selected in the previous step.

Note: The time that it will take to download the fixes is dependent on many factors including the speed and the configuration of your network.

•

Follow these steps to install the fixes

- You may install the fixes using either method listed below.
- Install the fixes from an image catalog associated with a virtual optical device. (V5R2 required)
- Install the fixes from CD-ROM on any supported release.

Install the fixes from an image catalog

- Refer to the instructions on how to install fixes from an image catalog in the iSeries Information Center.
- Note: You must have release V5R2 installed in order to use image catalogs.

© 2004 IBM Corporation

iSeries. mySeries.



Silent Install

© 2004 IBM Corporation

iSeries. mySeries.



Silent Install

- Install iSeries Access for Windows or service packs to PC without end-users having to respond to prompts
- Also a way to restrict the set of initial components that an end-user receives
- Can be used for upgrades, selective setup, and service packs.
Upgrades and service packs should launch setup.exe from the install source.
Selective Setup should launch setup.exe from the PC's ...\\Client Access directory

© 2004 IBM Corporation

iSeries. mySeries.



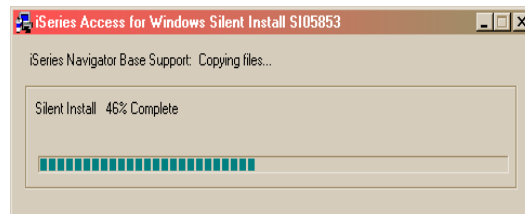
Silent Install

- You perform the desired type of install on your PC, recording installation choices into install scripts (.iss files)
For example, `setup.exe -r -f1C:\MyDir\v5r1v5r2upg.iss`
- Schedule or run `setup.exe` on the end-user PC's with the proper parameters specifying the response file location (or use CheckService Level)
i.e., `setup.exe -s -f1\\iSeries\Express\Response\v5r1v5r2upg.iss -f2C:\Temp\v5r1v5r2upg.log`
- Log file tracks installation results (you can specify location/name of log file)
- For detailed information on silent installs see InfoCenter:
<http://publib.boulder.ibm.com/series/v5r2/ic2924/index.htm?info/rzaii/rzaiisilentinstall.htm>



Silent Install

- **Silent Install indicator**
 - Appears in task tray on end-user's PC during silent install
 - Silent install failure leaves indicator active, double-clicking indicator shows failure point





Silent Install

- Most silent install errors involve a dialog out of order from what was recorded (-12 return code in silent log)
 - The best way to debug this is to start a manual install on the failing PC and proceed through the install wizard panels until the confirm panel prior to file transfers
 - The majority of the dialog errors occur prior to the confirmation panel
 - See if any unexpected dialogs appear that were not anticipated during recording
- Silent.txt file in the ...\\Client Access directory lists the components installed silently and successfully



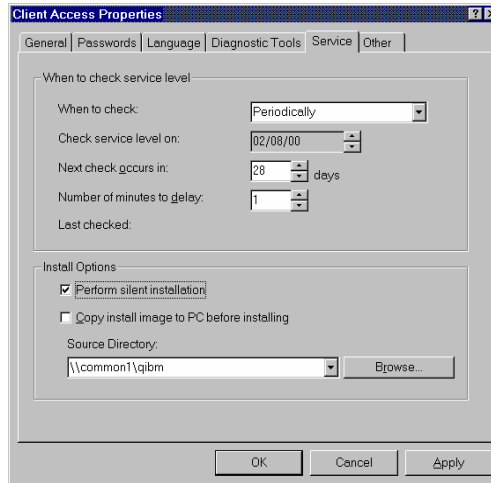
Silent Install

Check Service Level

- Using Check Service Level for silent installs of service packs and upgrades eliminates the need for confusing command-line parameters - but does require specific names for response files
- SLTSP.ISS - for service packs (This file must reside in the same directory as the service pack image)
- SLTUP.ISS - for upgrades (This file must reside in the same directory as the upgrade image)
- If rebooting automatically, consider using SCHEDCHECK parameter on *cwbckver.exe* and schedule during the middle of night. Look in online iSeries Access for Windows User's Guide index for *cwbckver* for more information on the SCHEDCHECK parameter
- If not rebooting automatically, Check Service Level will come out of silent mode and prompt user for reboot

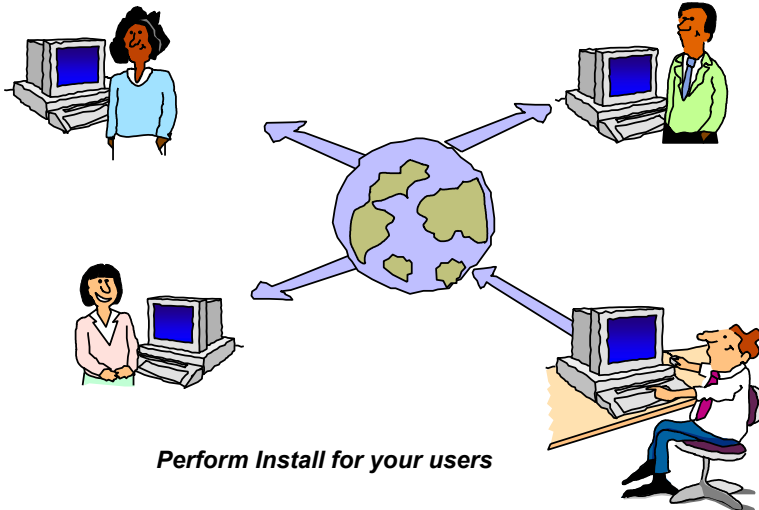


Silent Install



© 2004 IBM Corporation

iSeries. mySeries.



Perform Install for your users

© 2004 IBM Corporation

iSeries. mySeries.



Combine use of Tailored and Silent Install

- You wish your users to:
 - Have only selected parts of iSeries Access for Windows installed on their PC
 - And you don't want them to find additional Access for Windows functions in the Selective Install windows
 - Get it installed on their PCs without user intervention
 - Want updates (service packs) and new releases to automatically get installed on those end user PCs
- Use a combination of Tailored Install and Silent Install and a few PC commands (wizards) to do this
- From then on Access for Windows will keep desktop users up to date.
- Use new PTFFORM to update Tailored Install directory with fixes

Steps to perform...

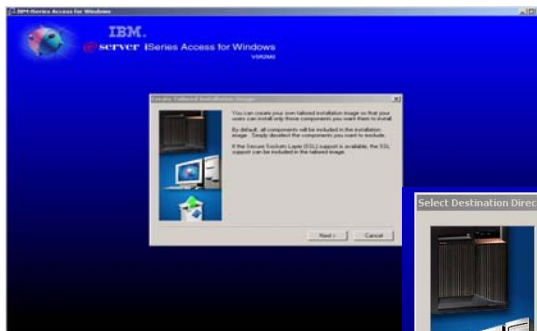


© 2004 IBM Corporation

iSeries. mySeries.



Step 1. Run Tailored Install Wizard

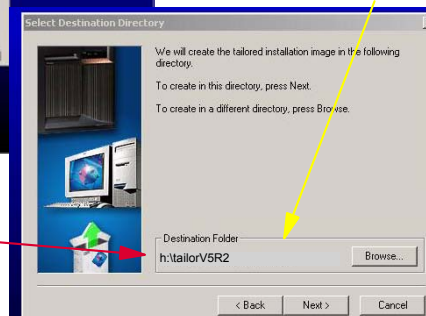


Run **Cwbinimg.bat** wizard

Have a drive mapped to \\myseries\myshare

Select where you want this saved

(if you put in QIBM directory you may automatically get SSL encryption program, iSeries Navigator plug-ins, add-in's)



© 2004 IBM Corporation

iSeries. mySeries.

Step 2. Record Silent Install of the Tailored Install Image

```

Microsoft Windows [Version 5.00.2195]
(C) Copyright 1985-2000 Microsoft Corp.

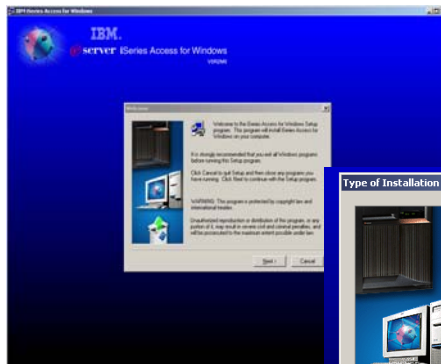
C:\> \\myseries\myshare\tailorU5R2\setup.exe -r -f1\myseries\myshare\tailorU5R2\mytailored.iss
    
```

Set up to record a Silent Install Response File

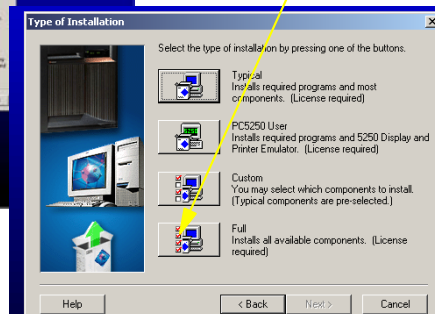
Using 'universal naming convention' (UNC) rather than mapping a drive - so it can be found without a mapped drive

- Do not have any version of Client Access or iSeries Access (5763-XD1, 5722-XE1) on your PC
- Point to QIBM directory on your iSeries
- Point to location you want to store your response file (not in QIBM directory)
- Bring up a command prompt
- Key in Silent Install command
 - » 'setup -r -f1:dirfile.iss' to identify where responses are to be stored
- This starts the iSeries Access Install program

Step 2 (continued). Recording the Tailored Install functions now...



- Now select 'Full' install to capture steps to install everything that is in the Tailored Install file



Note: during this step this image is also being installed on your PC. You probably want to uninstall it after completing this step.



Step 3. Schedule Silent Install for PC Desktop

```
Command Prompt
Microsoft Windows 2000 [Version 5.00.2195]
(C) Copyright 1985-2000 Microsoft Corp.

C:\>help at
The AT command schedules commands and programs to run on a computer at
a specified time and date. The Schedule service must be running to use
the AT command.

AT [\computername] [ /id] [/DELETE] | /DELETE [/YES]]
AT [\computername] time [/INTERACTIVE]
  [/EVERY:date[,...]] | /NEXT:date[,...]] "command"

\computername    Specifies a remote computer. Commands are scheduled on the
                  local computer if this parameter is omitted.
id                Is an identification number assigned to a scheduled
                  command.
/delete           Cancels a scheduled command. If id is omitted, all the
                  scheduled commands on the computer are canceled.
/yes              Used with cancel all jobs command when no further
                  confirmation is desired.
time              Specifies the time when command is to run.
/interactive      Allows the job to interact with the desktop of the user
                  who is logged on at the time the job runs.
/EVERY:date[,...] Runs the command on each specified day(s) of the week or
                  month. If date is omitted, the current day of the month
                  is assumed.
/NEXT:date[,...]  Runs the specified command on the next occurrence of the
                  day (for example, next Thursday). If date is omitted, the
                  current day of the month is assumed.
"command"        Is the Windows NT command, or batch program to be run.
```

- Bring up Command prompt
- Use 'AT' command... or some other scheduler program/wizard



Step 3 (continued) Add this to 'AT' under the Command step

```
Command Prompt
Microsoft Windows 2000 [Version 5.00.2195]
(C) Copyright 1985-2000 Microsoft Corp.

C:\>\\nyiseries\myshare\tailor\U5R2\setup.exe -s -f1\nyiseries\myshare\tailor\U5R2\mytailored.iss

Schedule the Silent Install for end user's desktop

C:\>help at
The AT command schedules commands and programs to run on a computer at
a specified time and date. The Schedule service must be running to use
the AT command.

AT [\computername] [ /id] [/DELETE] | /DELETE [/YES]]
AT [\computername] time [/INTERACTIVE]
  [/EVERY:date[,...]] | /NEXT:date[,...]] "command"

\computername    Specifies a remote computer. Commands are scheduled on the
                  local computer if this parameter is omitted.
id                Is an identification number assigned to a scheduled
                  command.
/delete           Cancels a scheduled command. If id is omitted, all the
                  scheduled commands on the computer are canceled.
/yes              Used with cancel all jobs command when no further
                  confirmation is desired.
time              Specifies the time when command is to run.
/interactive      Allows the job to interact with the desktop of the user
                  who is logged on at the time the job runs.
/EVERY:date[,...] Runs the command on each specified day(s) of the week or
                  month. If date is omitted, the current day of the month
                  is assumed.
/NEXT:date[,...]  Runs the specified command on the next occurrence of the
                  day (for example, next Thursday). If date is omitted, the
                  current day of the month is assumed.
"command"        Is the Windows NT command, or batch program to be run.
```



Notes: Schedule a command remotely

The 'at' command is part of Windows 2000 and can be used to schedule a task from a command prompt on a remote PC:

At

- Lists scheduled commands or schedules commands and programs to run on a computer at a specified time and date.
- The Schedule service must be running to use the at command.
 - at [\computername] [[id] [/delete] | /delete [/yes]]
 - at [\computername] time [/interactive] [/every:date[...]] /next:date[...]] command
- Parameters
 - none
 - Used without parameters, at lists scheduled commands.

Accessing Scheduled Tasks remotely

- Network administrators can create task files for maintenance and add them to users' computers as needed; you can send and receive task files, as you would any other file, in e-mail messages; and you can share the Scheduled Tasks folder on your computer so that it can be accessed remotely by using My Network Places.

Note:

- You create a scheduled task on your local computer and then drag the .job file over to a remote computer account.

Parameters

- \computername - Specifies a remote computer. If this parameter is omitted, the commands are scheduled on the local computer.
- id - Specifies the identification number assigned to a scheduled command.
- /delete - Cancels a scheduled command. If id is omitted, all the scheduled commands on the computer are canceled.
- /yes - Forces a yes answer to all queries from the system when deleting scheduled events.
- time - Specifies the time when the command is to run. Time is expressed as hours:minutes in 24-hour notation (00:00 [midnight] through 23:59).
- /interactive = Allows the job to interact with the desktop of the user who is logged on at the time the job runs.
- /every:date[...]] - Runs the command on every specified day or days of the week or month (for example, every Thursday, or the third day of every month). Specify date as one or more days of the week (M,T,W,Th,F,S,Su) or one or more days of the month (using numbers 1 through 31). Separate multiple date entries with commas. If date is omitted, the current day of the month is assumed.
- /next:date[...]] - Runs the specified command on the next occurrence of the day (for example, next Thursday). Specify date as one or more days of the week (M,T,W,Th,F,S,Su) or one or more days of the month (using numbers 1 through 31). Separate multiple date entries with commas. If date is omitted, the current day of the month is assumed.
- command - Specifies the Windows 2000 command, program (.exe or .com file), or batch program (.bat or .cmd file) to be run. When the command requires a path as an argument, use the absolute path, that is, the entire path beginning with the drive letter. If the command is on a remote computer, specify UNC notation for the server and share name, rather than a remote drive letter. If the command is not an executable (.exe) file, you must precede the command with cmd /c; for example: cmd /c dir > c:\test.out



Install and Service Pack Tips



Install and Service Pack Tips

Tips

- Merged install image eliminates the need for an extra reboot
 - Roll out new clients from merged image and get new release and latest service pack in one step

- Save disk space for service pack archive
 - If a service pack has been well-tested, and you are confident in it, you can have your end-users install it without enabling service pack uninstall. Then they will not have a \Archive directory containing files from the previous service level.
 - RMVPTF and reinstall from install image to get back to prior service level if necessary.



Install and Service Pack Tips

Tips ...

- Bypass administrator authority requirement on Windows NT/2000/XP/2003
 - Required by Windows API's used to handle locked file replacements
 - Check Service Level can be invoked via a scheduler running under administrator authority to install service packs or upgrades

- To circumvent this problem:
 - Sign-on to Windows NT/2000/XP/2003 as an administrator.
 - Configure NT/2000/XP/2003 schedule service (on Win 2000, Control Panel->Scheduled Tasks)
 - Set check service level properties.
 - Schedule check service level.



Install and Service Pack Tips

Tips ...

- Incoming Remote Command component of iSeries Access for Windows can be used for silent release upgrades or silent service pack installs
 - Start service on NT/2000/XP/2003 client
 - Specify to log on as Local System Account to satisfy Administrator authority restriction needed for install
 - No need to "Allow Service To Interact With Desktop" for a silent upgrade or service pack install
 - RUNRMTCMD on iSeries specifying setup.exe/setupsp.bat and userid/password of Administrator account on PC
`RUNRMTCMD CMD('w:\proddata\Access\Windows\install\image\setupsp.bat -s -f1\myserver\silentshare\sitsp.iss')`
`RMTLOCNAME(PCNAME *IP) RMTUSER(PCUSER) RMTPWD(PCPASSWD)`
 - REXEC from a TCP/IP client can also be used to submit setup.exe



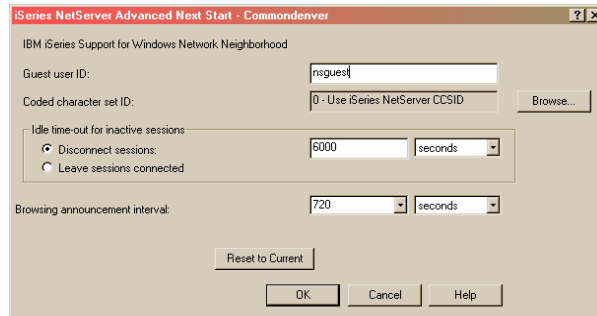
Install and Service Pack Tips

- Keep end-users from installing a service pack until you are ready
 - Text file SP.TXT placed in the service pack image directory can prevent anyone from installing the service pack until you are ready
 - 'N' as the 1st character in the file prevents install
 - 'Y' or no SP.TXT file at all will allow the install
Second text line can contain a message to users that will appear during Check Service Level
 - Same method used to prevent all end-users from upgrading via Check Service Level to a new release
 - Additional control values for a merged image:
 - 'U' allows an upgrade, but stops a service pack
 - 'S' allows a service pack, but stops an upgrade
 - Documented in User's Guide - look in Index for 'SP'



Install and Service Pack Tips

- **iSeries Netserver Guest user profile - for users that normally would not have access to this iSeries - but that you would like to have install service packs**



Install and Service Pack Tips

Tailored Install

- **APYPTF will not affect a tailored image**
PTFFORM.EXE in FTP /subcomps directory can be used to overlay a tailored install image - identical to set of files in the PTF version.

Or tailor the install again every 4 or 5 months after APYPTF of service pack.

- **Secure Sockets Layer (SSL) component can be included with the tailored install. Useful for remote users installing from CD - to be able to have a secure connection with SSL the first time they connect to iSeries**



Application Administration

© 2004 IBM Corporation

iSeries. mySeries.



Application Administration

Overview

- Part of iSeries Navigator - separately installable component
- iSeries-based solution for restricting iSeries Navigator and iSeries Access for Windows - *SECADM authority required on iSeries to manage Application Administration settings
 - *ALLOBJ required for some Advanced Settings
- Can restrict iSeries Navigator functions against a particular iSeries
- Can restrict portions of iSeries Access for Windows and set configuration values similar to Client Access Express policy support
- Easy to use interface

© 2004 IBM Corporation

iSeries. mySeries.



Application Administration

Overview ...

- Application Administration settings are stored on the iSeries and associated with the user profile (*USRPRF) or other iSeries database files.
 - Can be set up differently for each iSeries
 - Users get the same access to a particular iSeries regardless of which PC they use (including Win95/98 vs WinNT/2000/XP/2003)
 - The iSeries userid determines access rights - in cases where the PC userid differs from the iSeries userid
- iSeries Access for Windows/iSeries Navigator software calls low-level AppAdmin functions to determine if a particular function can be performed or not.



Application Administration

Overview ...

- iSeries Navigator is enabled for control
 - All high level functions are controllable
 - Management Central functions can also be controlled
- iSeries Access for Windows is enabled for control
 - PC5250
 - Data Transfer
 - ODBC
 - OLE DB
 - Remote Program Calls
 - iSeries Access for Windows/ iSeries Navigator commands



Application Administration

Overview ...

- **Local Settings represent iSeries Navigator on/off restrictions**
 - Same as what was in V5R1
 - Resynched every time iSeries Navigator is started to a particular iSeries
 - Also include same limited set of iSeries Access for Windows restrictions that were in V5R1

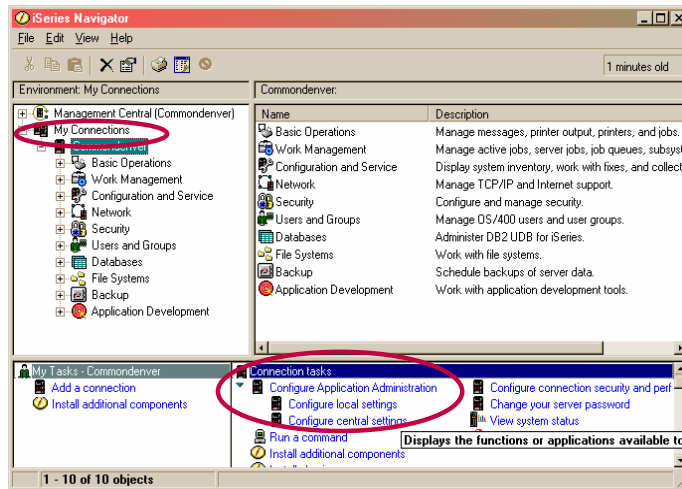


Application Administration

Overview ...

- **Central Settings were added for V5R2**
 - Same settings apply to all iSeries connections
 - Control iSeries Access for Windows on/off restrictions (same set as Local Settings plus many more)
 - Also supports Advanced Settings that can define configuration values for Connection-related information
 - Restrictions/settings downloaded from an Administration System on a user-specified Scan Frequency
 - Mandated or suggested (default but can be changed) values
 - Similar to values controlled by iSeries Access for Windows policy support

Application Administration



Notes: Administration System for iSeries Access for Windows users

In order to support the functionality previously only available via "iSeries Access for Windows" Policies templates, Application Administration introduced a new concept in V5R2 called **Administration System**. The Administration System is a central system that is used to manage many of the properties used by iSeries Access for Windows clients.

The Administration System is any V5R2 or later iSeries that has been configured to serve "Central Settings" to client PCs. By default, all iSeries are configured to **not be** an Administration System. A System Administrator must use Application Administration to configure an iSeries server before it can act as an Administration System. Typically a network will have only 1 iSeries system acting as the Administration System. This administration system will be used by iSeries Access for Windows clients as the source for their administration system settings. Although a network can have multiple iSeries systems defined as the administration system, iSeries Access for Windows clients will only use a single administration system for their central settings, defined.

An administrator can work with Users and Groups using Application Administration on a local server, but the administration systems provides additional ways to manage users and groups. An administrator can use the advanced settings of an administration system to control what environments are available to specific users and groups, and an administrator can control password, connection, service, and language settings. **NOTE:** You must have security administrator (*SECADM) and all object (*ALLOBJ) special authorities to work with the advanced settings on an Administration system.. This differs from other settings in Application Administration which only require security administrator (*SECADM) special authorities to make changes.

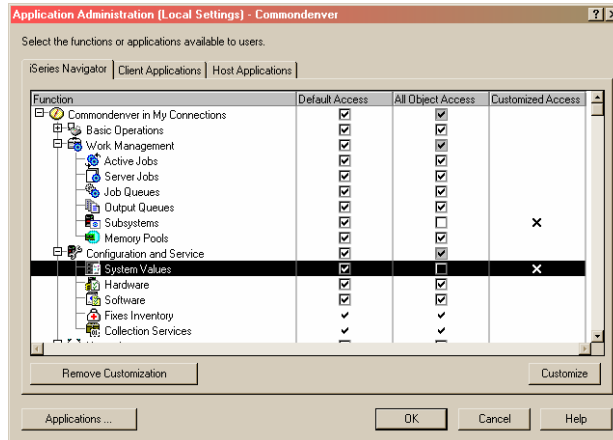
You can create an Administration System to manage many of the properties used by iSeries Access for Windows clients. To create an Administration Instance, follow these steps:

- Right click on the system you want to be the Administration System, and select Properties
- Click the Administration System Tab
- Select Administration System to treat the system as your Administration System



Application Administration

User Interface (Local Settings - iSeries Navigator)



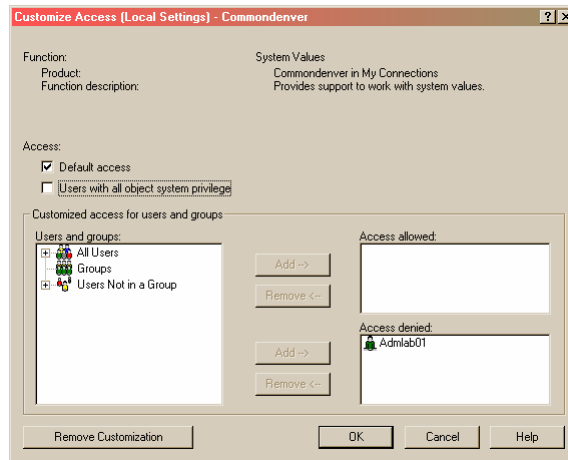
© 2004 IBM Corporation

iSeries. mySeries.



Application Administration

User Interface (Local Settings - iSeries Navigator)

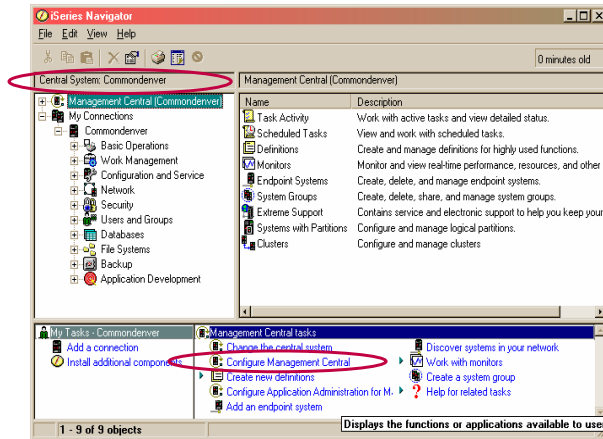


© 2004 IBM Corporation

iSeries. mySeries.

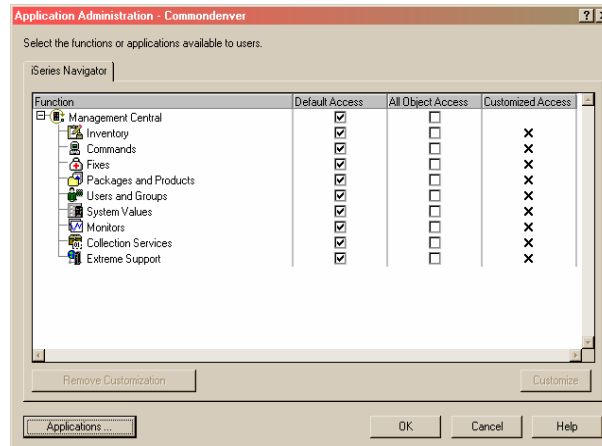
Application Administration

User Interface (Management Central)



Application Administration

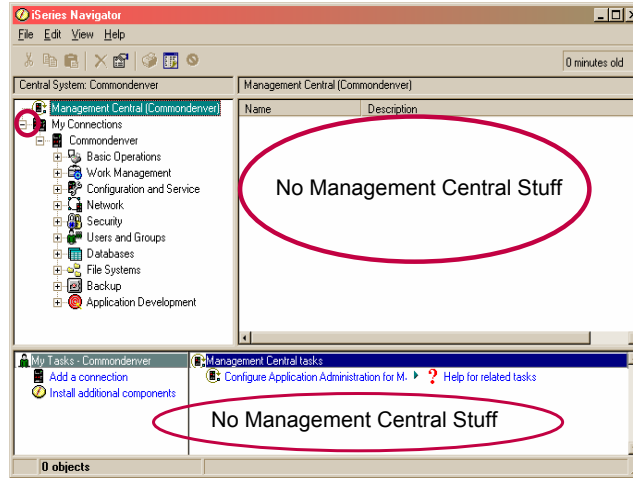
User Interface (Management Central)





Application Administration

User Interface (Management Central)



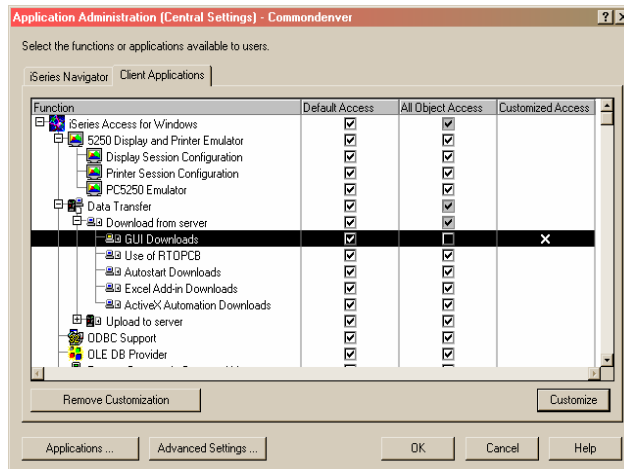
© 2004 IBM Corporation

iSeries. mySeries.



Application Administration

User Interface (Central Settings - iSeries Access)



© 2004 IBM Corporation

iSeries. mySeries.

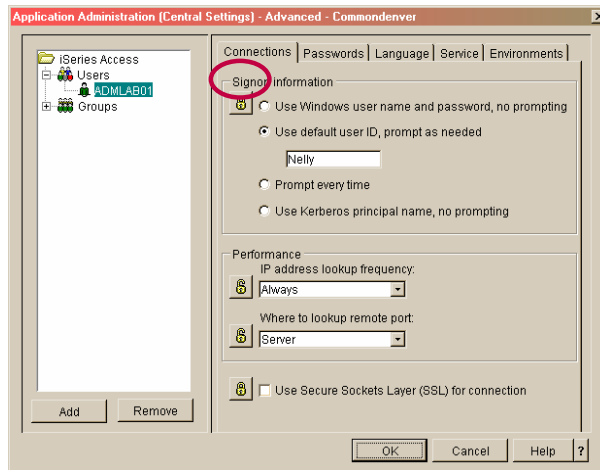
Application Administration

User Interface (Central Settings - iSeries Access)



Application Administration

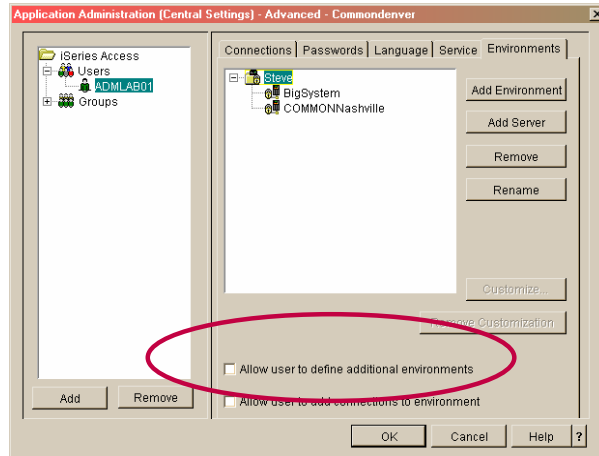
User Interface (Central Settings - Advanced Settings)





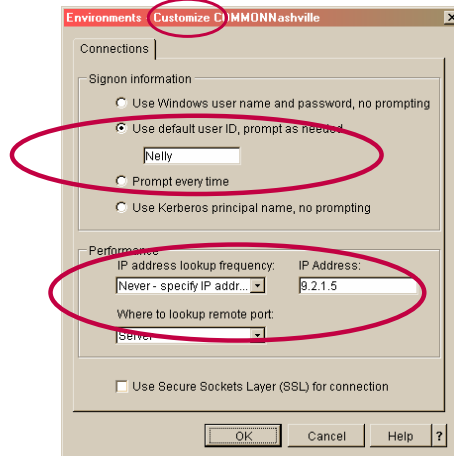
Application Administration

User Interface (Central Settings - Advanced Settings)



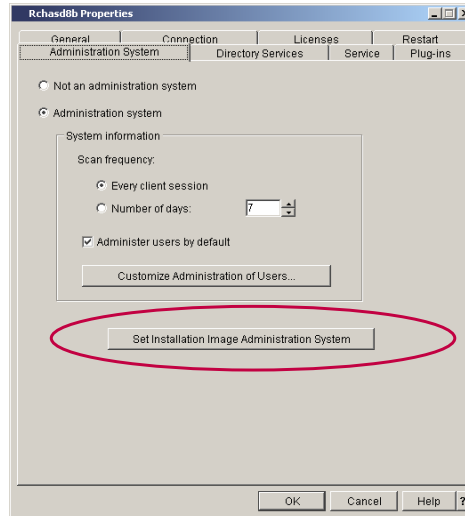
Application Administration

User Interface (Central Settings - Advanced Settings)



Setting Administration System

- In order to have Central settings, a system in the network must be set up to be an "Administration system".
 - This system will contain settings that are common to all systems in the network.
- There are 2 ways for a PC to have an Administration system set for it:
 - From the Properties panel for the iSeries Server from iSeries Navigator.
 - By having an administrator set it in the installation image.



Set Installation Image Administration System

- The Set Installation Image Administration System dialog allows an administrator to change an iSeries Access for Windows installation image so that it contains an initial administration system. All clients that install using the updated installation image will use the system specified on this dialog as their initial administration system. Click Browse to display a list of possible installation image locations.
- Note: The systems available to select are systems that are currently in your active environment. If you want to treat a system as an administration system, but that system is not available from the list, you will need to add that system to your active environment.
- To add a system to your active environment from the iSeries Navigator menu bar, follow these steps:
- Select File-->Connection to Servers-->Environments.
- From the Environments dialog, select your active environment from the Environments list and click Add server.
- Follow the Add Connection wizard to add a system to your active environment.



Signon Information

© 2004 IBM Corporation

iSeries. mySeries.



Signon Information

Overview

- **Connections and signon information can be defined via iSeries Navigator (subset that resides within iSeries Access for Windows Required Programs component)**
- **A previously undefined connection will be configured dynamically when a iSeries Access for Windows function references an iSeries TCP/IP name - signon information for that connection can be defined then, and will be retained within the iSeries Navigator connections list**
- **A connection and its signon information can be specified via the CWBCFG command-line utility**

© 2004 IBM Corporation

iSeries. mySeries.

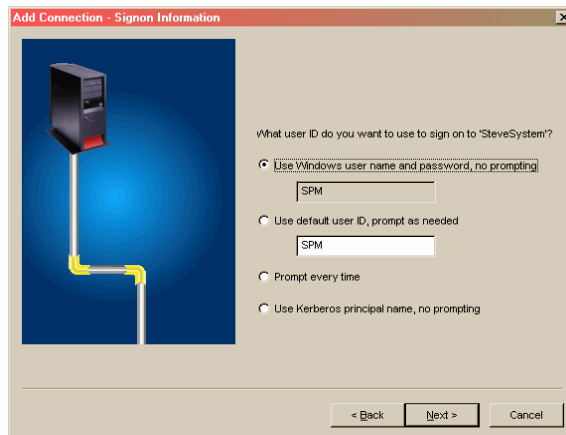
Signon Information

Overview ...

- Three signon types supported - can use a different signon method for each iSeries connection if desired
 - Use Windows user name and password, no prompting
 - Windows user name/password must conform to iSeries rules
 - Signon information in synch between PC and iSeries works best for iSeries NetServer
 - Use default user ID, prompt as needed
 - Uses password in Windows cache if one found that pertains to user ID
 - Prompt every time
 - Every application within iSeries Access for Windows will prompt for a signon when it needs to establish a connection

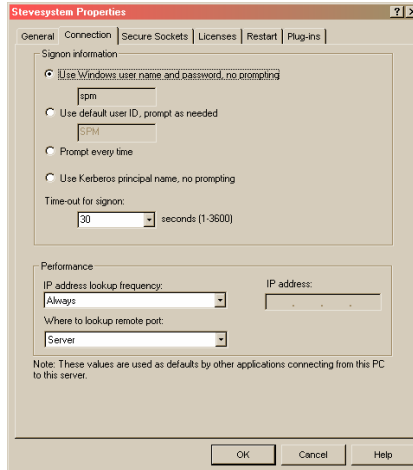
Signon Information

iSeries Navigator Configuration



Signon Information

iSeries Navigator Configuration ...

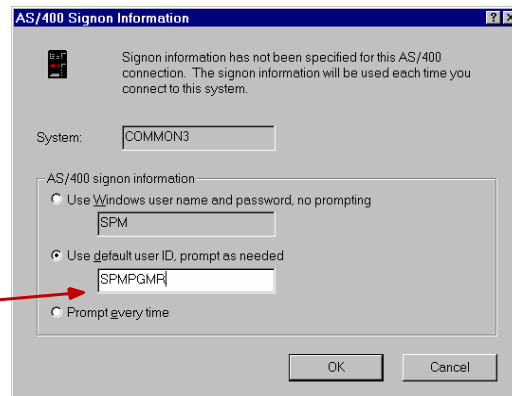


Signon Information

Dynamic connection

- iSeries system not previously configured
- This screen presented first time you connect to this iSeries, via PC5250 for example
- All other applications use this setting
- Can change through iSeries Navigator system properties

Uses password in short-term cache





Signon Information

CWBLOGON command

Use to connect to an iSeries without being prompted for Userid or Password

- Add cwblogon.exe program to Windows start-up folder
 - Simulates persistent password caching (ie, remembered across restarts)

Useful on NT/2000/XP/2003 where Windows password cache not provided
Password in clear text - use appropriate security measures

Documented in User's Guide



```
CWBLOGON  
system /u userid /p password
```



Signon Information

Application Administration

Common3 Properties

General | **Connection** | Licenses | Restart | Plug-ins

AS/400 signon information

Use Windows user name and password, no prompting

Use default user ID, prompt as needed

Prompt every time

Security

Use Secure Sockets Layer (SSL)

Performance

IP address lookup frequency: Always

IP address:

Where to lookup remote port: Server

Note: These values are used as defaults by other applications connecting from this PC to this AS/400 system.

OK Cancel Help



Additional Administration Tools

© 2004 IBM Corporation

iSeries. mySeries.



Additional Administration Tools

CWBCFG

- Useful for creating/replacing connection configuration information on a per-user basis
- Supported on Windows NT/Windows 2000/XP only
- MS-DOS command-line interface
- Useful for setting/replacing TCP/IP address
- Can also set/replace default user logon behavior
- Set default location for PC5250 user files
- Documented in User's Guide

© 2004 IBM Corporation

iSeries. mySeries.



CWBCFG Syntax

- CWBCFG [/host hostname] [/ipaddr address] [/uid userid] [/pc5250path path] [/r] [/s]
- Parameters
 - /host Designates the connection name in iSeries Navigator.
 - /ipaddr Designates the IP address. When this option is specified, the IP address lookup frequency will be set to Never, so that the specified address is always used.
 - /uid Designates the user ID to use for connections to this server.
 - /pc5250path Designates the fully-qualified path or path identifier for the folder where the PC5250 emulator will both store and look for the files it needs.
 - /r Replaces existing configurations.
 - /s Sets the configuration for the .default user.



CWBCFG Notes

- Command can only be run by an administrator on Windows NT/2000/XP.
- Connection configuration additions or changes apply only to the active environment.
- When adding a connection, the /s parameter will enable the iSeries Access ODBC Driver to be used from Windows service programs running under the Local System account.
- If no parameters are specified with the command, all Default User profile system configuration entries will be displayed.
- The IP address should only be specified if the hostname is not defined on a domain name server (DNS) or in a host table entry.
- Use of the /pc5250path parameter will only configure the open/save path that PC5250 uses. It will NOT move or copy any PC5250 files from the previous location to the new location. Manually moving or copying these files may be required for PC5250 to function properly after CWBCFG has run.



Additional Administration Tools

CWBBACK/CWBREST

CWBBACK

- Enables you to save (backup) an iSeries Access for Windows configuration. If you want to set up users (or groups of users) with similar configurations, you could create a configuration and then save it with CWBBACK.
 - All environment/connection information
 - Connection signon and performance information
 - Password expiration/caching settings
 - Check Service Level service properties
 - License release timeout value

Documented in User's Guide



Additional Administration Tools

CWBBACK/CWBREST ...

CWBREST

- Enables you to restore a previously-saved iSeries Access for Windows configuration. iSeries Access for Windows users could use CWBREST to use the configuration you wish them to have

Documented in User's Guide



Additional Administration Tools

CWBENV

CWBENV

- Export/Import an environment's associated connection information
- Similar to CWBBACK/CWBREST, but only deals with a single environment
- No iSeries Access for Windows Properties information exported/imported

Documented in User's Guide



Summary

- V5R3 changes
- iSeries Access for Windows Install/Upgrade
 - Tailored Install
- Service Packs
 - Check Service Level
- Silent Install
- Install and Service Pack Tips
- iSeries Navigator Application Administration
- iSeries Access for Windows Signon Information
 - iSeries Connection Settings
- Additional Administration Tools



Trademarks and Disclaimers

© IBM Corporation 1994-2004. All rights reserved.
References in this document to IBM products or services do not imply that IBM intends to make them available in every country.

The following terms are trademarks of International Business Machines Corporation in the United States, other countries, or both:
Instruction: Refer to the following URL: <http://www.ibm.com/legal/copytrade.shtml>. Edit the list below, IBM subsidiary statement, and special attribution companies which follow so they coincide with your presentation.

AS/400	e-business on demand	I5/OS
AS/400e	IBM	OS/400
eServer	IBM (logo)	
	iSeries	

Intel, Intel Inside (logos), MMX and Pentium are trademarks of Intel Corporation in the United States, other countries, or both.
Microsoft, Windows, Windows NT, and the Windows logo are trademarks of Microsoft Corporation in the United States, other countries, or both.
Java and all Java-based trademarks are trademarks of Sun Microsystems, Inc. in the United States, other countries, or both.
Other company, product or service names may be trademarks or service marks of others.

Information is provided "AS IS" without warranty of any kind.

All customer examples described are presented as illustrations of how those customers have used IBM products and the results they may have achieved. Actual environmental costs and performance characteristics may vary by customer.

Information concerning non-IBM products was obtained from a supplier of these products, published announcement material, or other publicly available sources and does not constitute an endorsement of such products by IBM. Sources for non-IBM list prices and performance numbers are taken from publicly available information, including vendor announcements and vendor worldwide homepages. IBM has not tested these products and cannot confirm the accuracy of performance, capability, or any other claims related to non-IBM products. Questions on the capability of non-IBM products should be addressed to the supplier of those products.

All statements regarding IBM future direction and intent are subject to change or withdrawal without notice, and represent goals and objectives only. Contact your local IBM office or IBM authorized reseller for the full text of the specific Statement of Direction.

Some information addresses anticipated future capabilities. Such information is not intended as a definitive statement of a commitment to specific levels of performance, function or delivery schedules with respect to any future products. Such commitments are only made in IBM product announcements. The information is presented here to communicate IBM's current investment and development activities as a good faith effort to help with our customers' future planning.

Performance is based on measurements and projections using standard IBM benchmarks in a controlled environment. The actual throughput or performance that any user will experience will vary depending upon considerations such as the amount of multiprogramming in the user's job stream, the I/O configuration, the storage configuration, and the workload processed. Therefore, no assurance can be given that an individual user will achieve throughput or performance improvements equivalent to the ratios stated here.

Photographs shown are of engineering prototypes. Changes may be incorporated in production models.