



Session: 55CP

iSeries. mySeries.

PC5250 Display Emulation Everything You Need To Know

Mark Vanderwiel
iSeries Access

© Copyright IBM Corporation, 2004. All Rights Reserved.
This publication may refer to products that are not currently
available in your country. IBM makes no commitment to make
available any products referred to herein.

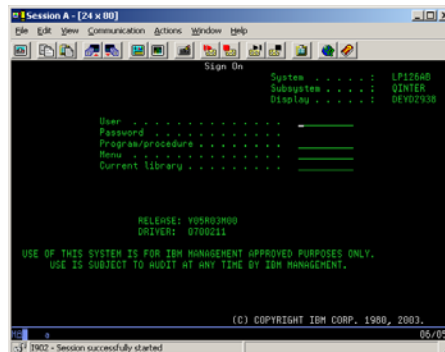
iSeries. mySeries.



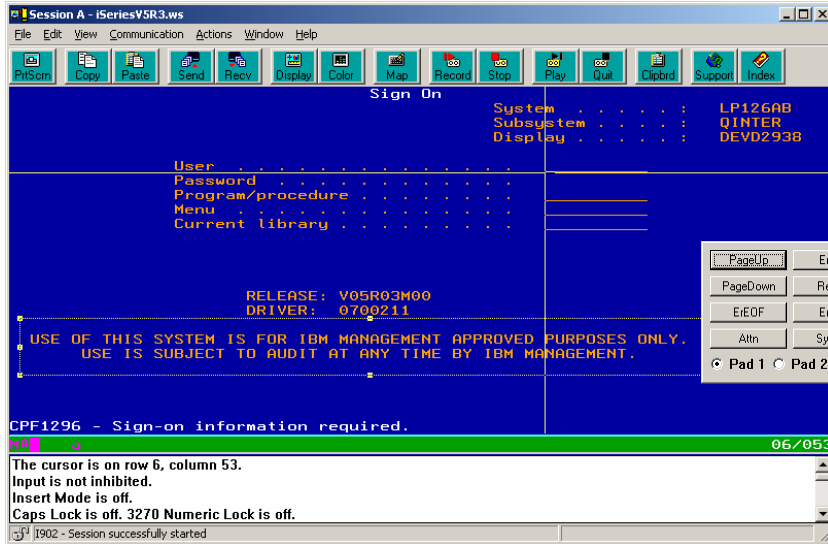
5250 Emulation Overview

Functions

- 5250 Telnet emulation
- iSeries Print emulation
- Customizable
 - Toolbar
 - Keyboard
 - Colors
 - KeyPad
 - More!



iSeries. mySeries.



© 2004 IBM Corporation

iSeries. mySeries.



Getting Started

- Install
- Ways to start PC5250
 - Session Manager
 - iNavigator
 - Desktop Icon
 - Run pcsws.exe
 - Start *.ws

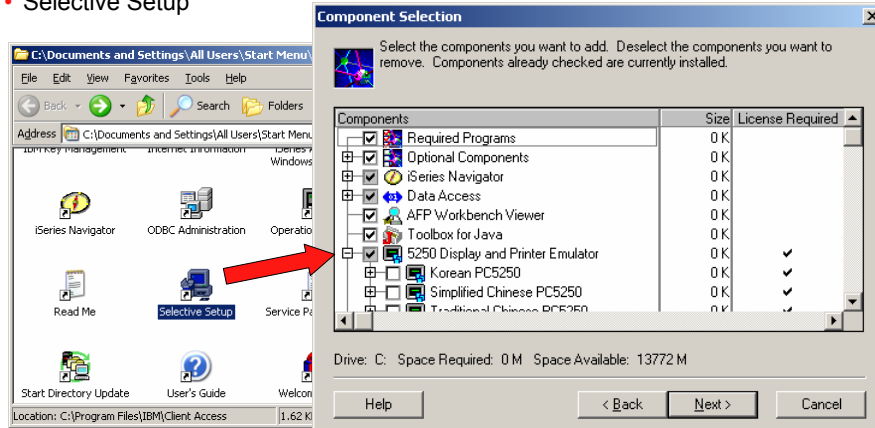


© 2004 IBM Corporation

iSeries. mySeries.

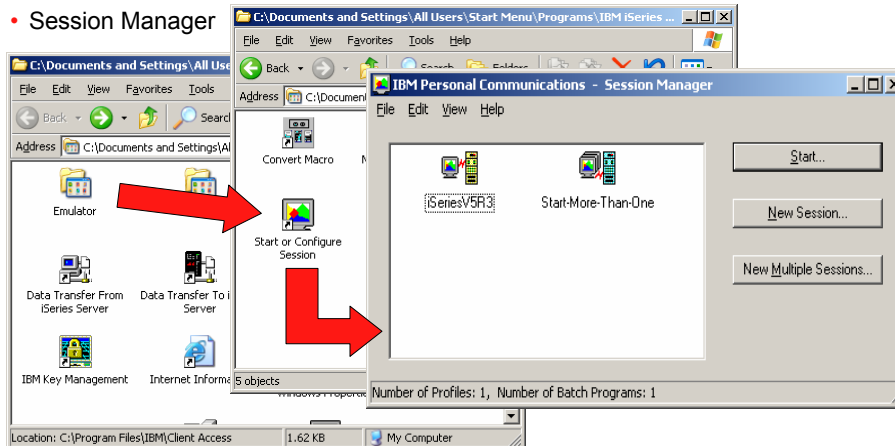
Installing PC5250

- Selective Setup



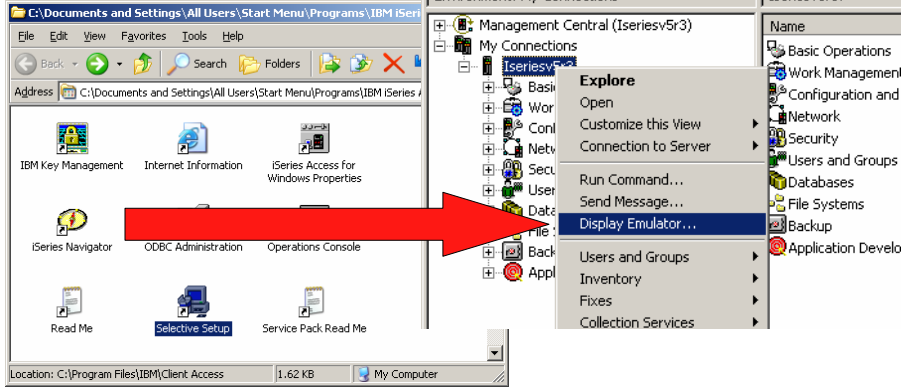
Ways to start PC5250

- Session Manager



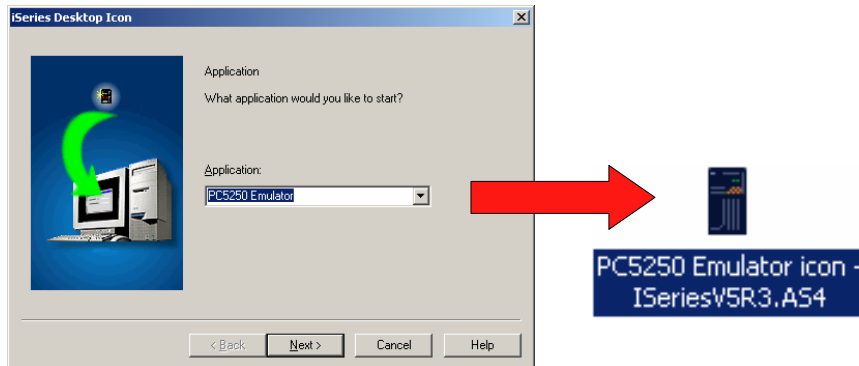
Ways to start PC5250

- iNavigator



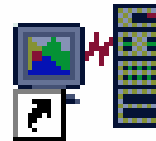
Ways to start PC5250

- Desktop Icons
 - New -> iSeries Desktop Icon



Ways to start PC5250

- Launch the program directly
 - Start -> Run -> PCSWS.EXE
- Launch a *.WS profile
 - Start ->Run ->Browse to profile-> iSeriesV5R3.WS
- Create your own shortcuts
 - Drag-n-Drop from Session manager
 - New -> Shortcut



iSeriesV5R3

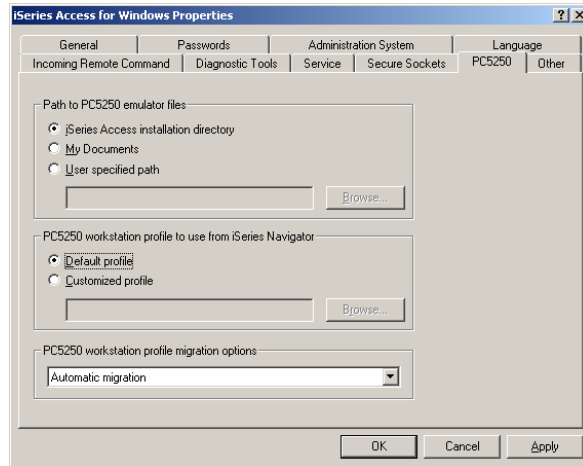
Session Profiles

- What are they?
 - Files with PC5250 configuration information:
 - Single session .WS
 - Multiple sessions .BCH
 - Other PC5250 configuration file extensions:
 - Toolbar: .BAR
 - Popup-Keypad: .PMP
 - Macro: .MAC
 - Keyboard: .KMP
 - Mouse Pad: .MPP

```
[Profile]
ID=WS
Version=7
[CT]
trace=Y
[Telnet5250]
HostName=ISERIESV5R3
Security=CA400
SSLClientAuthentication=Y
[Communication]
Link=telnet5250
Session=5250
[5250]
HostCodePage=037-U
PrinterType=IBM3812
[Keyboard]
CuaKeyboard=2
Language=United-States
IBMDefaultKeyboard=N
```

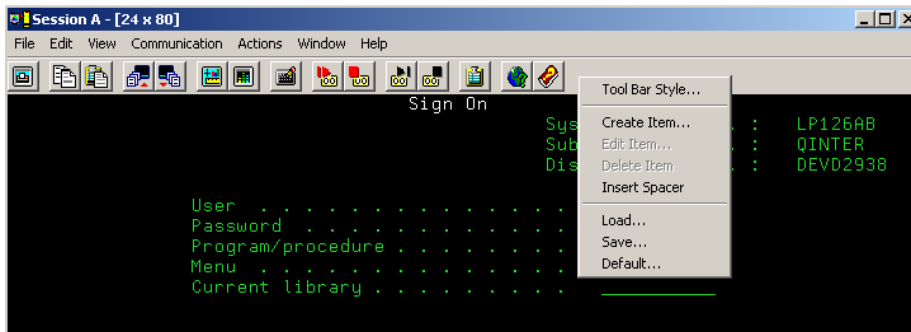
Session Profiles

- Where are they?
 - iSeries Access Properties in Control Panel
- Network paths
 - Multi-user sharing
 - Templates
- Migration
 - Default will handle most cases



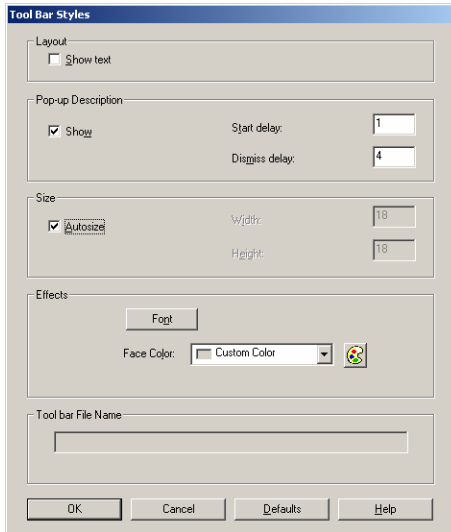
Toolbars

- Right click to customize



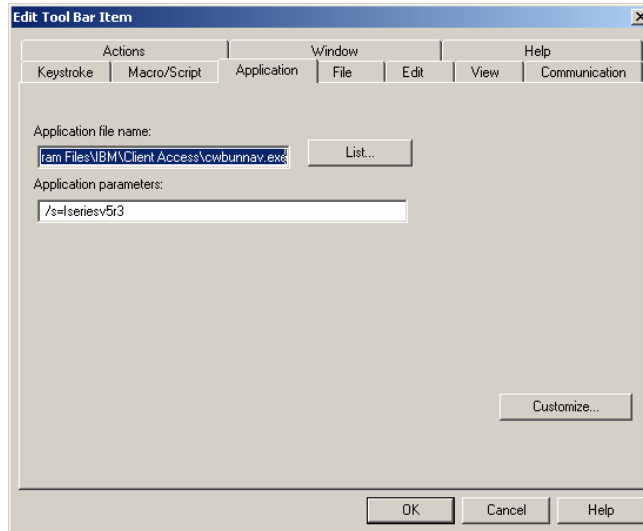
Toolbars

- Styles



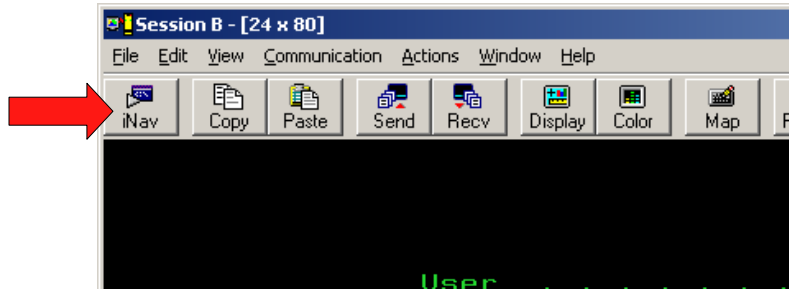
Toolbars

- Add item
 - Application
 - Key Action
 - Menu Action
 - Macro



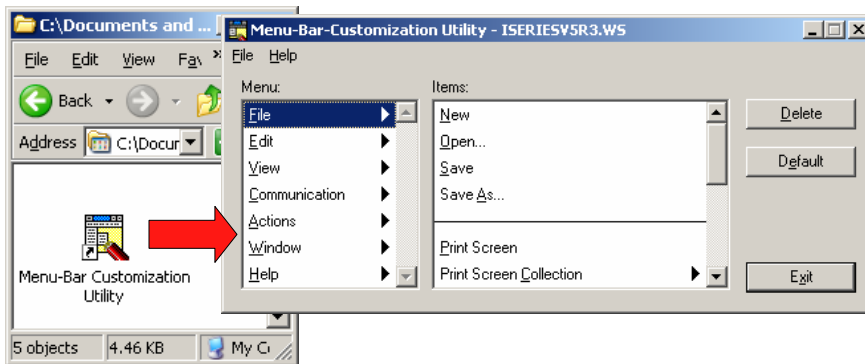
Toolbars

- Launch Application



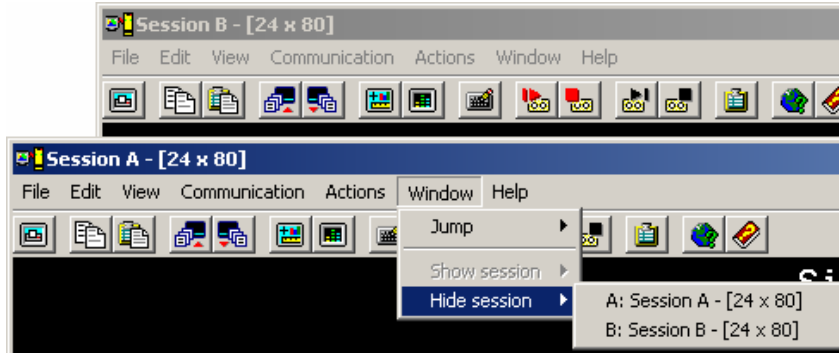
Menu Bar

- Remove unneeded menu items



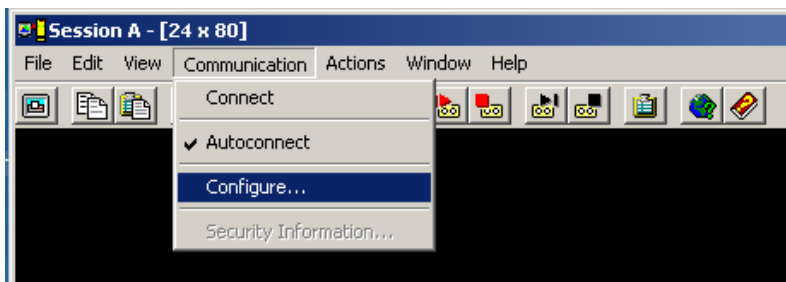
Session Control

- Session hiding/jumping



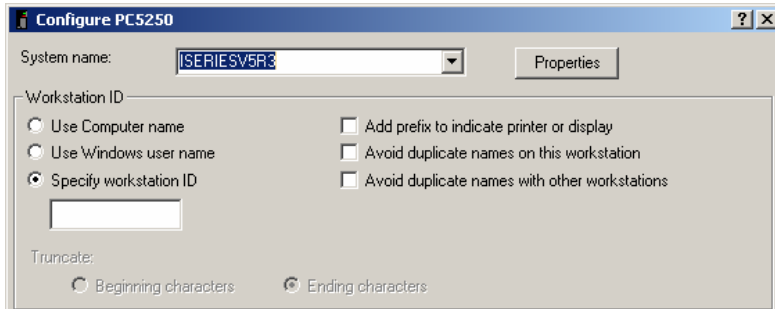
Communication Configuration

- Connection and device settings



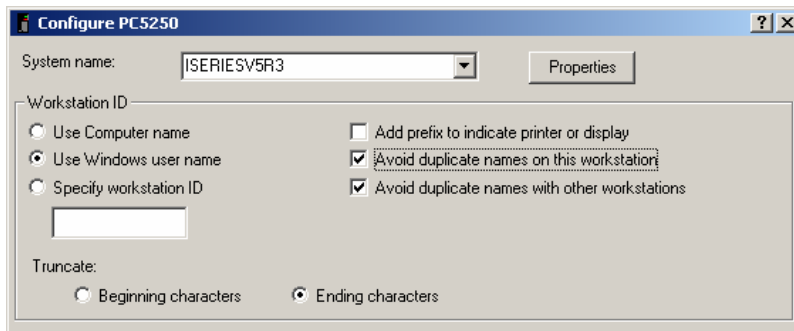
Device ID's

- Default settings
 - Device ID QPADEVnnnn is automatically generated
 - No association between users/pc's and devices



Device ID's

- Named
 - QAUTOVRT needs to be set



Device ID's

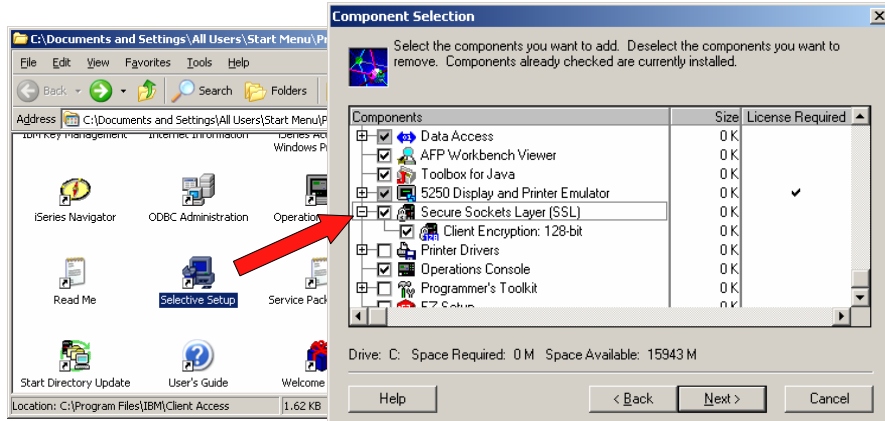
- Named device ID benefits
 - Associate device ID with user profile, workstation, ...
 - Route to subsystems based upon device name
 - Enables disconnected job support
 - QAUTOVRT needs to be set to high enough value
- Disconnected job support
 - Requires SAME device id AND user profile
 - QDSCJOBTV when to clean up disconnected unused jobs
 - QINACTITV timeout for action on idle jobs
 - QINACTMSGQ action taken for idle jobs (*ENDJOB, *DSCJOB)
 - Disconnected jobs hold system resources, you must manage them carefully

Secure Sockets Layer (SSL)

- Install SSL component
- Download Certificate Authority (CA) certificate
- Enable SSL
 - System configuration
 - Per Session configuration
- Server authentication
- Client authentication

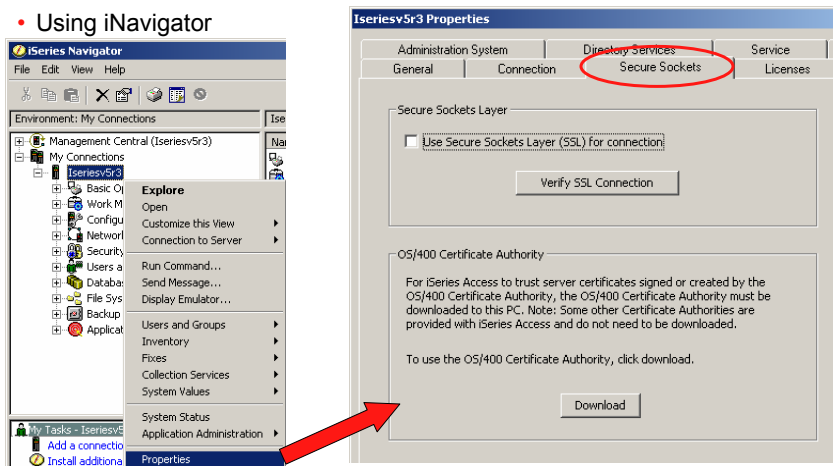
Secure Sockets Layer - Installing

- Selective Setup

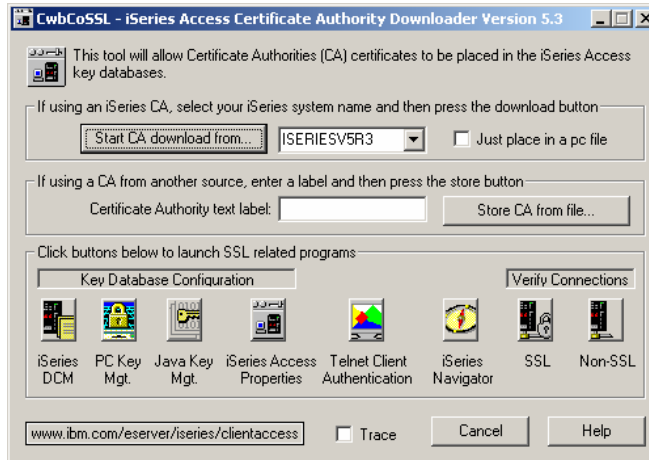


Secure Sockets Layer – Download CA and Enable

- Using iNavigator

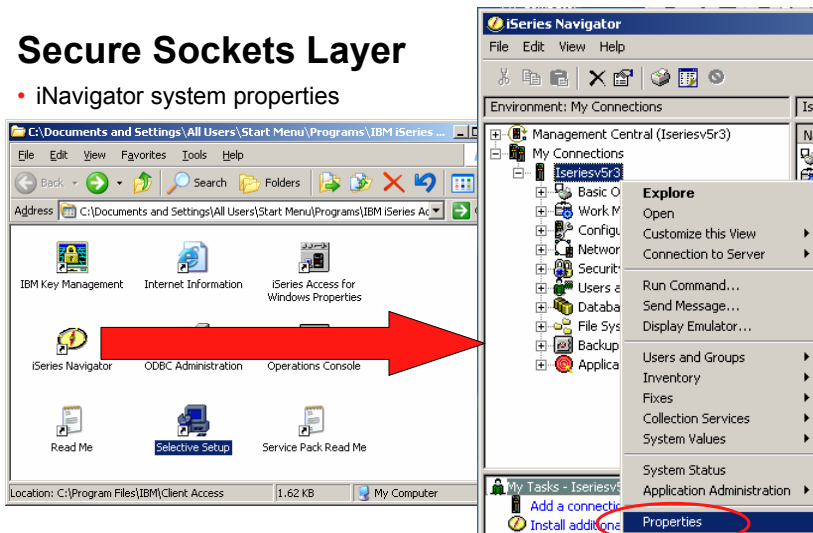


Secure Sockets Layer – CwbCoSSL utility



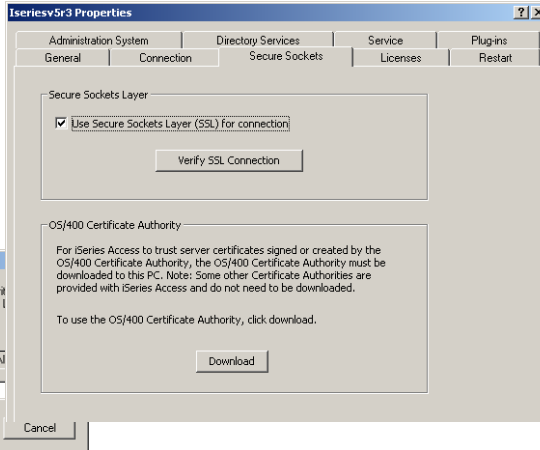
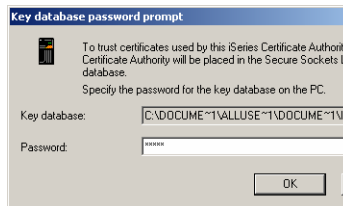
Secure Sockets Layer

- iNavigator system properties



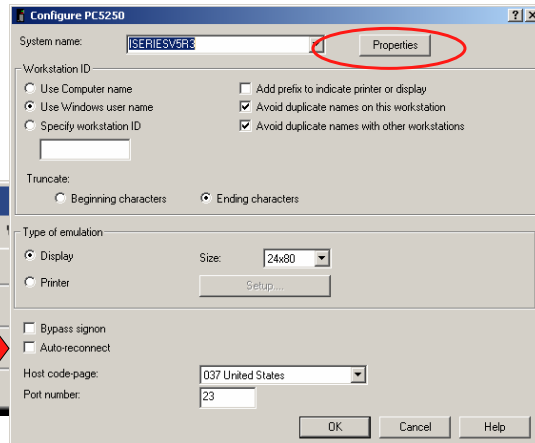
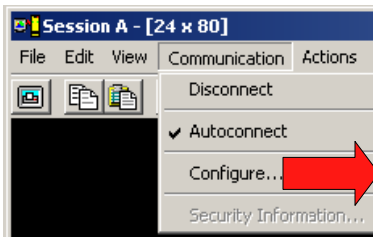
Secure Sockets Layer

- iNavigator system properties
 - Must restart INav
- Enable SSL
 - Must restart INav
- Download CA
 - Password prompt



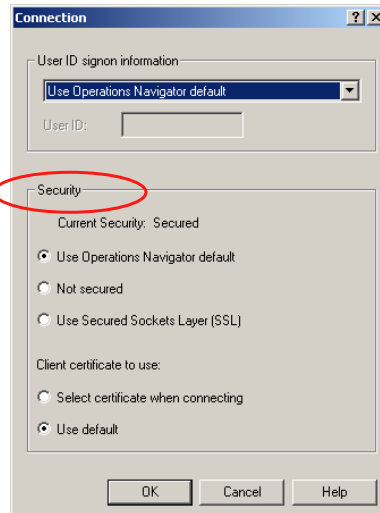
Secure Sockets Layer

- PC5250 configuration



Secure Sockets Layer

- PC5250 connection properties
 - Use iNavigator setting
 - Override setting
 - Ignore Client certificate to use
 - Port will change to 992 for SSL use

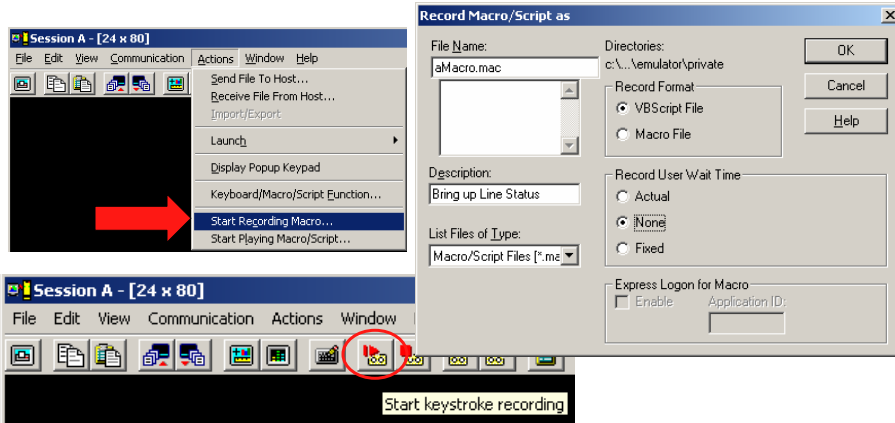


Macros

- How to setup and use
 - Recording
 - Customizing
 - Reduce wait times
 - Launch app
 - Playing

Macros

- Start Recording keystrokes and actions

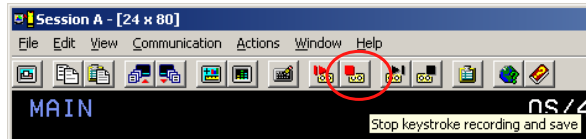


Macros

- Recording...

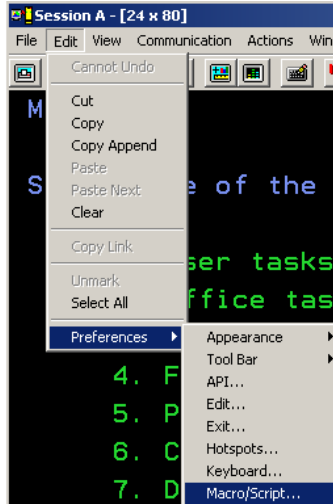


- Stop Recording and save macro



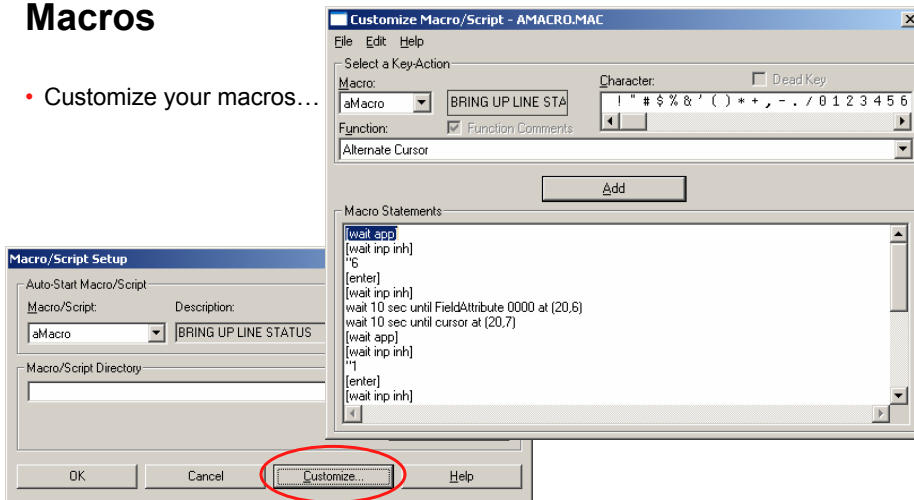
Macros

- Customize your macros...



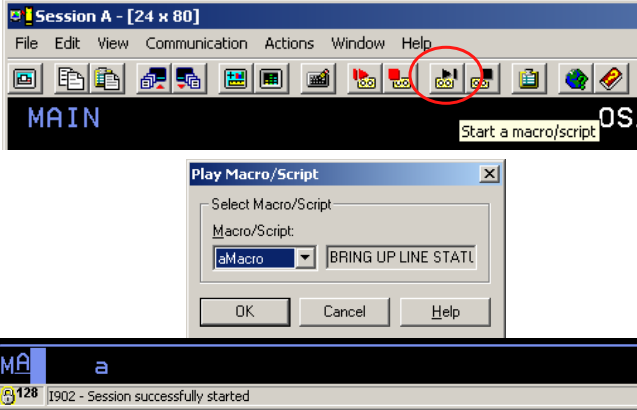
Macros

- Customize your macros...



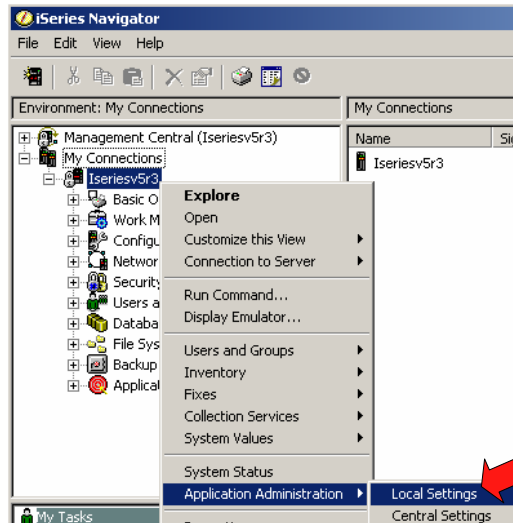
Macros

- Play your macros...



Administration

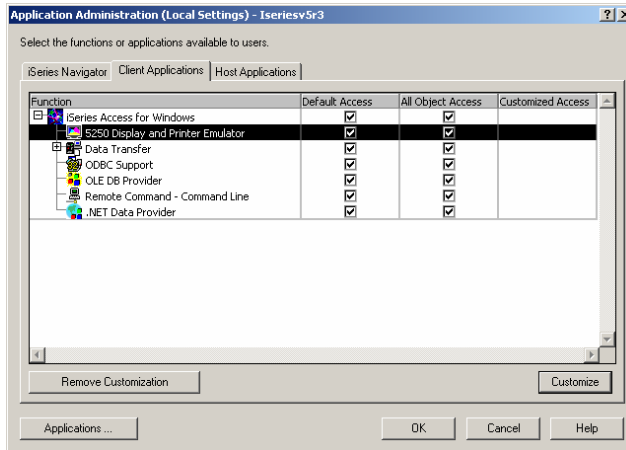
- Application Administration
 - Via iNavigator





Administration

- Settings
 - See Info Center for more ways to use this



© 2004 IBM Corporation

iSeries. mySeries.



Trademarks and Disclaimers

© IBM Corporation 1994-2004. All rights reserved.
 References in this document to IBM products or services do not imply that IBM intends to make them available in every country.

The following terms are trademarks of International Business Machines Corporation in the United States, other countries, or both:

AS/400	e-business on demand	i5/OS
AS/400e	IBM	OS/400
eServer	IBM (logo)	
	iSeries	

Rational is a trademark of International Business Machines Corporation and Rational Software Corporation in the United States, other countries, or both.
 Intel, Intel Inside (logos), MMX and Pentium are trademarks of Intel Corporation in the United States, other countries, or both.
 Linux is a trademark of Linus Torvalds in the United States, other countries, or both.
 Microsoft, Windows, Windows NT, and the Windows logo are trademarks of Microsoft Corporation in the United States, other countries, or both.
 UNIX is a registered trademark of The Open Group in the United States and other countries.
 SET and the SET Logo are trademarks owned by SET Secure Electronic Transaction LLC.
 Java and all Java-based trademarks are trademarks of Sun Microsystems, Inc. in the United States, other countries, or both.
 Other company, product or service names may be trademarks or service marks of others.

Information is provided "AS IS" without warranty of any kind.

All customer examples described are presented as illustrations of how those customers have used IBM products and the results they may have achieved. Actual environmental costs and performance characteristics may vary by customer.

Information concerning non-IBM products was obtained from a supplier of these products, published announcement material, or other publicly available sources and does not constitute an endorsement of such products by IBM. Sources for non-IBM list prices and performance numbers are taken from publicly available information, including vendor announcements and vendor worldwide homepages. IBM has not tested these products and cannot confirm the accuracy of performance, capability, or any other claims related to non-IBM products. Questions on the capability of non-IBM products should be addressed to the supplier of those products.

All statements regarding IBM future direction and intent are subject to change or withdrawal without notice, and represent goals and objectives only. Contact your local IBM office or IBM authorized reseller for the full text of the specific Statement of Direction.

Some information addresses anticipated future capabilities. Such information is not intended as a definitive statement of a commitment to specific levels of performance, function or delivery schedules with respect to any future products. Such commitments are only made in IBM product announcements. The information is presented here to communicate IBM's current investment and development activities as a good faith effort to help with our customers' future planning.

Performance is based on measurements and projections using standard IBM benchmarks in a controlled environment. The actual throughput or performance that any user will experience will vary depending upon considerations such as the amount of multiprogramming in the user's job stream, the I/O configuration, the storage configuration, and the workload processed. Therefore, no assurance can be given that an individual user will achieve throughput or performance improvements equivalent to the ratios stated here.

Photographs shown are of engineering prototypes. Changes may be incorporated in production models.

© 2004 IBM Corporation

iSeries. mySeries.