

WebSphere Development Studio Client for iSeries, Version 5.0

Highlights

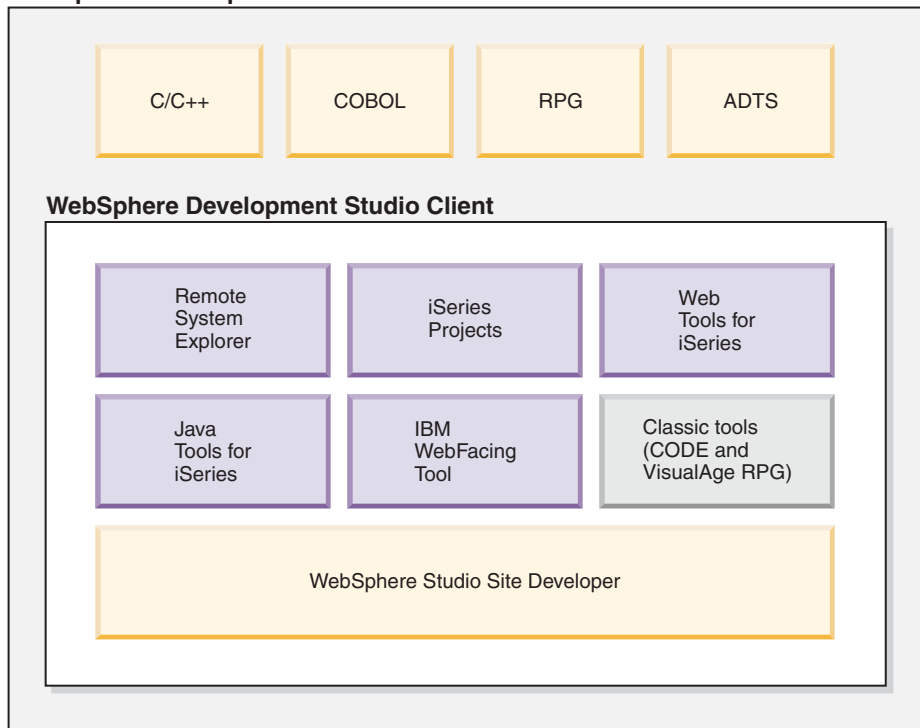
- *Web-enable existing interactive applications quickly and cost effectively with the IBM WebFacing Tool*
 - *Develop new Web applications with Java technology or RPG and COBOL languages using WebSphere software*
 - *Generate Java code easily to Web-enable your RPG applications*
 - *Be more productive building new or traditional iSeries applications*
 - *Help developers make a fast transition to e-business application development*
-

On-ramp to e-business for iSeries

WebSphere Development Studio Client for iSeries allows rapid e-business application development for the iSeries system. iSeries servers run the proven OS/400 operating system and support RPG and COBOL language business logic. More and more developers are redeploying UNIX and Microsoft Windows technology-based e-business applications to iSeries servers to help ensure e-commerce security, system dependability, and around-the-clock availability for their Web sites.

With the WebFacing Tool component of WebSphere Development Studio Client for iSeries, you can Web-enable existing applications during the development cycle—not runtime—improving the performance of your Web applications. And you can help your business make the transition to an application development strategy that gives you a competitive edge.

WebSphere Development Studio



Take RPG to the Web

With sophisticated wizards that do much of the work for you, your path to the Internet is much shorter. You can add Web interfaces to existing RPG applications. You can create Java beans to “wrap” your RPG programs in Web technology. Your RPG application, which you might have considered legacy, can suddenly become the cornerstone of your e-business strategy.

WebSphere Development Studio Client for iSeries

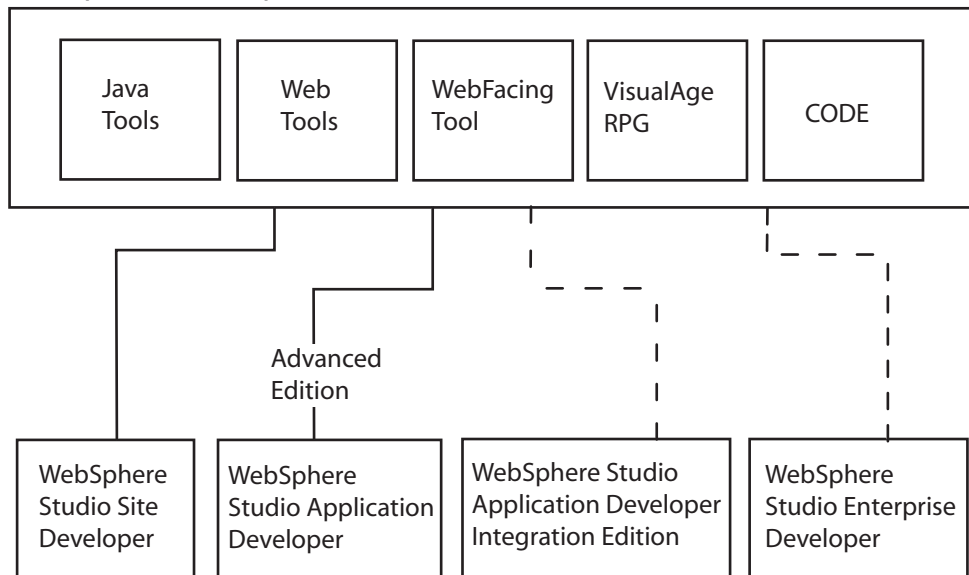
IBM created a comprehensive toolset to help you leverage the iSeries system and take advantage of business opportunities faster. The suite inherits improved Web and Java development capabilities from WebSphere Studio Site Developer, Version 5.0. You can create, test, deploy, and maintain sophisticated e-business applications with little Java, Web, or Web Services programming knowledge. You can interact with and develop logic and applications on a wide range of platforms, including the OS/400 integrated file system, Linux, Windows, and UNIX.

Use Web Services

As a programmer, you can now take advantage of the pools of resources created by the widespread use of the Internet. Now available to you are Web Services, which fulfill some of

your fundamental programming tasks. Modules exist that can be plugged right into your application development project. You don't have to settle for being a consumer of these services: there are wizards that help you create Web Services yourself, based on the application modules you've created—in Java, RPG, or COBOL.

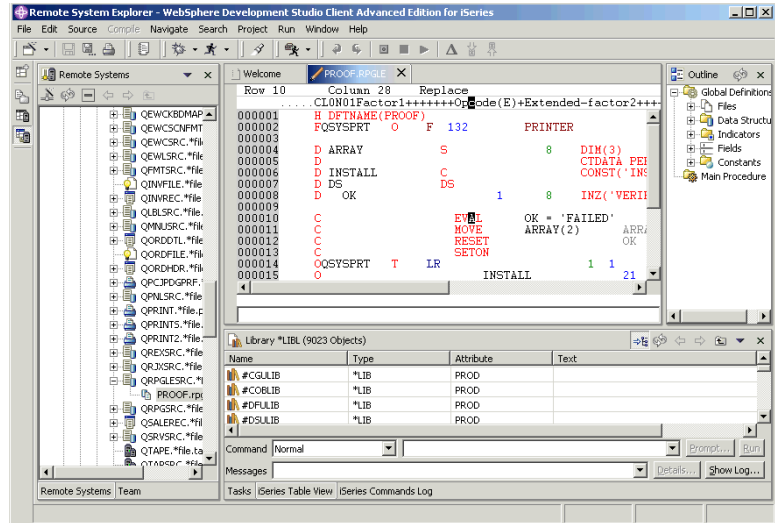
WebSphere Development Studio Client for iSeries



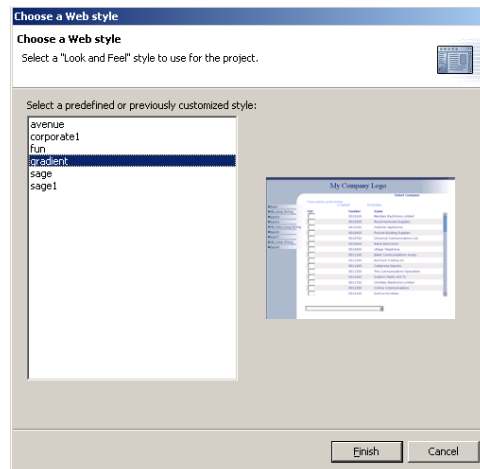
What's new this release?

You get:

- The ability to plug in third party tools based on the Eclipse platform to extend the Remote System Explorer and iSeries projects
- Better editing functions in the Remote System Explorer support syntax checking, program verification, F1 support, and drag and drop
- Many additional PDM functions including library list manipulation and the iSeries Table view
- Straightforward deployment to IBM WebSphere Application Server for iSeries version 5.0 Advanced and Express
- Enhanced style sheets for the IBM WebFacing Tool—created by IBM's media designers
- Simplified customization of WebFacing Tool applications with Web development tools for iSeries, including integration with Data and Flow
- Overall improvements to IBM WebFacing Tool conversion and run-time performance
- Support for the Struts builder and Struts development tools, integrated specifically with the WebFacing Tool and Web tools for iSeries
- A Web services client test environment
- The new iSeries debugger that enables you to detect and diagnose errors in code developed with OS/400 ILE and non-ILE languages (RPG, COBOL, CL, C, and C++)



- The Profiling perspective to trace and determine performance issues for iSeries Java programs
- Updates to Page Designer
- Updates to the built-in test environment where you can test your web applications, providing support for Apache Tomcat, WebSphere Application Server version 4.0 and version 5.0 run-time environments—including WebSphere Application Server Express 5.0
- Comprehensive online help that now opens in a separate window, so that you can re-size and reposition the help to appear beside the user interface while you work



IBM WebSphere Development Studio Client for iSeries at a glance

Hardware requirements

Host

- iSeries and AS/400 RISC models (If deploying applications to the WebSphere Application Server, please refer to the WebSphere Application Server documentation for minimum iSeries hardware requirements.)

Workstation

- Intel Pentium II (Pentium III 500 MHz or faster recommended)
- 512 MB RAM (768 MB RAM recommended)
- 1650 MB free hard drive space (an additional 700 MB hard drive space is temporarily required during installation)
- SVGA display 800 x 600 (1024 x 768 recommended)
- CD-ROM or DVD drive
- Mouse or pointing device
- Support for a communications adapter

Software requirements

Host

- OS/400 V5R1 or later
- All prerequisite Program Temporary Fixes (PTFs). PTF information is available at:
<http://www.ibm.com/software/ad/iseries/support/>
- OS/400 is only required if the programming objects are located on the iSeries server or the application contains backend code on the iSeries server

Workstation

- For Windows NT: Server or Workstation 4.0; Service Pack 6a or higher
- For Windows 2000: Professional, Server, or Advanced Server; Service Pack 1 or higher
- For Windows XP: Professional, Server, or Advanced Server, Service Pack 1 or higher
- Microsoft Internet Explorer 5.5, Service Pack 1 or higher



© Copyright IBM Corporation 2003

IBM Corporation
Software Group
8200 Warden Avenue
Toronto, Ontario, Canada
L6G 1C7

All Rights Reserved

AS/400, the e-business logo, IBM, the IBM logo, OS/400, VisualAge, and WebSphere are trademarks or registered trademarks of International Business Machines Corporation in the United States, other countries, or both.

Intel and Pentium are trademarks of Intel Corporation in the United States, other countries, or both.

Java and all Java-based trademarks and logos are trademarks of Sun Microsystems, Inc. in the United States, other countries, or both.

Microsoft, Windows, and WindowsNT are trademarks of Microsoft Corporation in the United States, other countries, or both.

UNIX is a registered trademark of The Open Group in the United States, other countries, or both.

Other company, product, and service names may be trademarks or service marks of others.