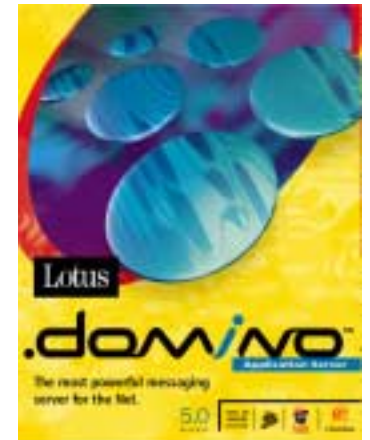


IBM @server - Domino for iSeries

*2001 Announcements
ITSO Technical Overview*



IBM @server. For the next generation of e-business.

New iSeries Hardware

- iSeries Models
 - Standard Servers
 - Dedicated Servers for Domino

New for Lotus Domino With V5R1

- DSD Support for Java
- High Availability through ClusterProven™
- EZ Setup

Lotus Domino Enhancements

- Collaborative/Commerce -- B2B solutions with a Domino flavor
 - Sametime
 - QuickPlace
- Server Consolidation
 - Domino
 - Microsoft Exchange servers workload

New, faster iSeries Processors

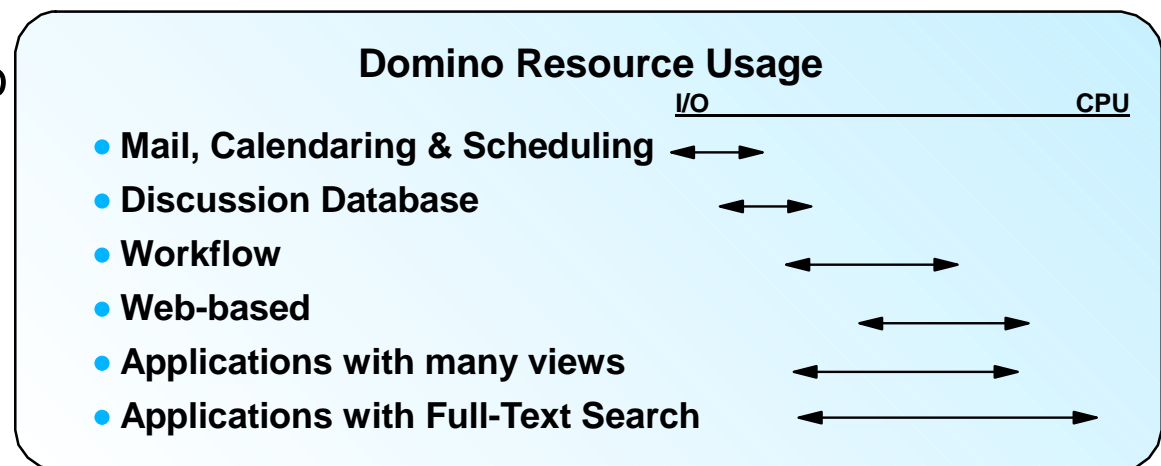
- Power for Domino Collaborative Commerce applications
- Faster response time for Domino Web applications

Scalability/capacity increases

- Domino workload consolidation
- More Domino users per platform footprint
- Lower cost per user

OS/400 V5R1

- Enhancements effecting Domino



Notes: New With V5R1

The iSeries announcements associated with OS/400 V5R1 includes a range of faster CPUs based on the sStar processor architecture which has a cycle time of 600 MHz. These systems include the standard processors and Dedicated Server for Domino (DSD) processors. A later chart will show the extent of these processor capacities.

The increased scalability introduced with these new processors results in an increase in the maximum number of Domino users supported on a single iSeries footprint, and significantly reduces the cost per Domino users.

In addition to the hardware products, some significant enhancements with OS/400 V5R1 has a direct impact on the facilities available with Lotus Domino on the iSeries.

Note: Use of the term "AS/400" in this presentation applies to both AS/400 and iSeries systems, except where noted.

New iSeries Models 270, 820, 830, 840

- New, faster SStar processors for higher performance (270, 820 & 840)
- New "Base" Processor features (820)
- Up to 2x Max Memory capacity
- Dynamic LPAR
- New DVD RAM



- iSeries Model 270
 - 1 & 2 Way SStar
 - Up to 16 GB Memory
 - Up to 421 GB Disk, 24 disk arms
 - Up to 6,660 MCU*



- iSeries Model 820
 - 1, 2 & 4 Way SStar
 - Up to 32 GB Memory
 - Up to 4 TB Disk, 237 disk arms
 - Up to 11,810 MCU*



- iSeries Model 830
 - 2, 4 & 8 Way IStar
 - Up to 64 GB Memory
 - Up to 11 TB Disk, 630 disk arms
 - Up to 22,900 MCU*



- iSeries Model 840
 - 12-24 Way SStar
 - Up to 128 GB Memory
 - Up to 18.9 TB Disk, 1080 disk arms
 - Up to 77,800 MCU*

*Mail & Calendaring User Performance Estimates at 70% CPU Utilization

IBM  server. For the next generation of e-business.

The new sStar processors have cycle speeds of 540 or 600MHz with L2 Cache of either 0, 2, 4 or 16MB and range between 1-way and 24-way processor systems. The top end 24-way 840 is rated to support nearly 78,000 Mail and Calendar Users (MCUs).

iSeries model 820:

- The performance values of the new SStar processor features do fit smoothly between the earlier announced iSeries model 820 processors performance values.
- The new "base" processor features (#0150, 0151, 0152) provide equal CPW values as their "standard" processor feature counterparts, but they do not provide any interactive capacity.
- the maximum supported DASD and main storage capacity has doubled.

iSeries model 830:

- There are no new model 830s in this announcement but the maximum supported DASD and main storage capacity has doubled.
- A new processor feature with the ability to increase the server processing capacity by adding an extra processor up to seven times from one active processor of the base processor feature up to eight processors activated as a maximum. This new Capacity Upgrade on Demand model 830 has processor feature 2351. It is RPQ only for specific environments. Each additional processor activation requires an order for one CUoD specify #1605.

iSeries Model 840:

- A new iSeries Model 840 processor feature (#2461) is available with V5R1. This new processor has an improved price performance over the earlier announced iSeries Model 840 processors. announced in 2000. Three new Capacity Upgrade on Demand options are also based on the new SSstar
- The previously announced processors can provide "Capacity Upgrade-on-Demand". Additional processor capacity (processors physically resident in the server can be activated when needed. Maximum CPW values are more than 23 percent higher compared to the CPW values of the V4R5 iSeries Model 840 processors.
- Each additional processor activation requires an order for one CUoD specify #1605.

New iSeries Dedicated Server for Domino

IBM  server iSeries



#2452

iSeries DSD Model 270



#2454



#2456

iSeries DSD Model 820



#2457



#2458

New iSeries DSD Requires:

- ✓ Domino R5.0.6a.01 or later
- ✓ OS/400 V5R1

IBM  server. For the next generation of e-business.

Notes: New DSDs

The following table shows details of the new DSD iSeries Systems:

Domino Processor	270-2452	270-2454	820-2456	820-2457	820-2458
Mail & Calendaring Users	3,070	6,660	3,110	6,660	11,810
Typical Mail Users	1,540	3,330	1,560	3,330	5,910
N-Way	Uni	2-Way	Uni	2-Way	4-Way
Maximum Memory	16 GB	16 GB	32 GB	32 GB	32 GB
Maximum Disk Arms	24	24	237	237	237
Maximum Disk Capacity	843 GB	843 GB	8.334 TB	8.334 TB	8.334 TB
Processor CPW	100	240	120	240	380
Interactive CPW	0	0	0	0	0
Software Tier	P10	P10	P05	P10	P10

IBM @server. For the next generation of e-business.

iSeries Models (V5R1)

Mdl	Feat	Tech	MHz	L2 (MB)	Thrds	CPW	n-way	M-C Users
270	2431	SStar	540	0	2	465	1	1490
	2432	SStar	540	2	2	1070	1	3070
	2434	SStar	600	4	4	2350	2	6660
	2452*	SStar	540	2	2	100*	1	3070
	2454*	SStar	600	4	4	240*	2	6660
	2248	Pulsar	400	0	1	150	1	810
@	2250	Pulsar	400	0	2	370	1	1600
@	2252	Pulsar	450	2	2	950	1	2570
@	2253	Pulsar	450	4	4	2000	2	5050
	2422*	Pulsar	400	0	1	50*	1	1600
	2423*	Pulsar	450	2	2	100*	1	2570
	2424*	Pulsar	450	4	4	200*	2	5050
820	0150	SStar	600	2	2	1100	1	3110
	0151	SStar	600	4	4	2350	2	6660
	0152	SStar	600	4	8	3700	4	11810
	2435	SStar	600	2	1	600	1	1620
	2436	SStar	600	2	2	1100	1	3110
	2437	SStar	600	4	4	2350	2	6660
	2438	SStar	600	4	8	3700	4	11810
	2456*	SStar	600	2	2	120*	1	3110
	2457*	SStar	600	4	4	240*	2	6660
	2458*	SStar	600	4	8	380*	4	11810

Mdl	Feat	Tech	MHz	L2 (MB)	Thrds	CPW	n-way	M-C Users
820	2395	Pulsar	400	0	1	370	1	1600
@	2396	Pulsar	450	2	2	950	1	2570
@	2397	IStar	500	4	4	2000	2	5610
@	2398	IStar	500	4	8	3200	4	9890
	2425*	Pulsar	450	2	2	100*	1	2570
	2426*	IStar	500	4	4	200*	2	5610
	2427*	IStar	500	4	8	300*	4	9890
830	2400	IStar	400	2	4	1850	2	4490
	2402	IStar	540	4	8	4200	4	10680
	2403	IStar	540	4	16	7350	8	22900
840	2461	SStar	600	16	48	20200	24	77800
	2352	SStar	600	16	16/24	9000	8(12)	
	2353	SStar	600	16	24/36	12000	12(18)	40500
	2354	SStar	600	16	36/48	16500	18(24)	
	2418	IStar	500	8	24	10000	12	28430
	2420	IStar	500	8	48	16500	24	55610
	2416	IStar	500	8	16/24	7800	8(12)	
	2417	IStar	500	8	24/36	10000	12(18)	28430
	2419	IStar	500	8	36/48	13200	18(24)	

***** Dedicated Server for Domino

@ Still orderable but recommend ordering SStar Models

Note: All Performance Estimates at 70% CPU Utilization



IBM  server. For the next generation of e-business.

Base and Standard Processors

- Relative performance measurements are derived from Commercial Processing Workload (CPW) on iSeries and AS/400. CPW is representative of commercial applications, particularly those that do significant database processing in conjunction with journaling and commitment control.
 - PROCESSOR CPW -- maximum relative performance for this processor feature running commercial processing workloads. This value, stated as Client/Server CPW in previous releases, can be used to compare relative performance between various processor features.
 - INTERACTIVE CPW -- relative performance available to perform interactive (5250) workloads. The amount of Interactive CPW consumed will reduce the available Processor CPW by the same amount.

Domino Processors

- Relative performance measurements are derived by performing various monitored and measured workloads on iSeries and AS/400e servers. The results (reported values) can be used to compare relative performance characteristics of processor features offered for iSeries and AS/400e servers. Performance that individual customers experience may vary.
 - MAIL AND CALENDARING USERS (MCU): Workload derived by performing mail and calendaring functions, and is significantly more complex than Simple Mail Users. This workload represents users on a Notes client reading, updating, or deleting documents in an e-mail database, as well as lookups in the Domino Directory, scheduling calendar appointments and invitations. Reported values reflect 70% processor utilization to allow for growth and peak loads in excess of customer workload estimates.
 - COMMERCIAL PROCESSING WORKLOAD (CPW): This relative performance measurement is derived by performing commercial processing workloads on Dedicated Domino Processors. CPWs are representative of commercial applications, particularly those that do significant database processing in conjunction with journaling and commitment control.
 - ✓ The reported values for CPW represent the capacity of non-Domino workload available to support a Domino environment. The reported CPW may be utilized by System Resource activities and Domino Resource extensions (e.g., database accesses, external program calls). The amount of CPW consumed will reduce the available capacity to perform Domino workloads reflected as SMU or MCU.
 - ✓ PROCESSOR CPW: reflects the maximum amount of non-Domino workload (10-15% of CPU) supported.
 - ✓ INTERACTIVE CPW: reflects the portion of Processor CPW (0% CPU) available for 525-type workloads.

Notes: V5R1 Capacities-2

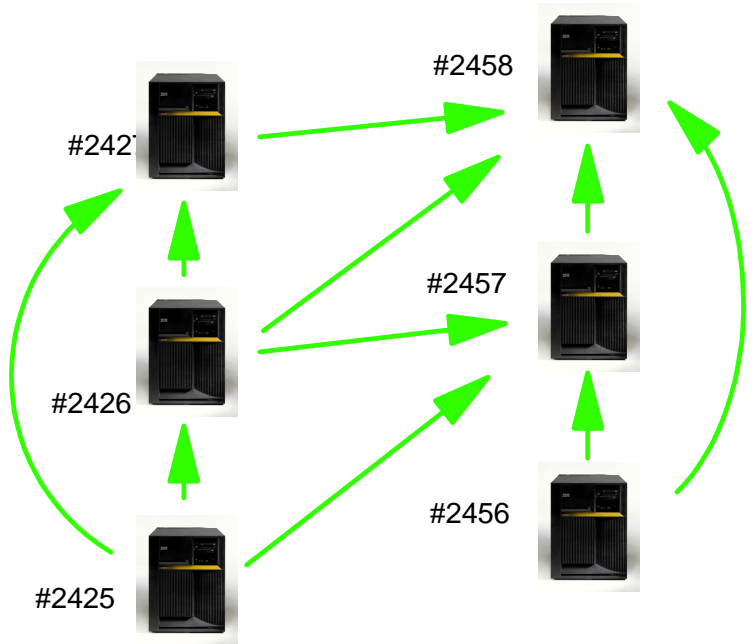
Note: Other, low end 270s and 820s can do Mail and Calendaring workloads and Domino applications, but are not shown on this chart. They should not be the "lead configurations" because of their limited capacities, such as active number of users. Before considering these 270s and 820s you should understand the workload requirements and use either the Workload Estimator or BEST/1 for sizing.

The Workload Estimator (as of April 2001) can be found at: <http://www.as400service.ibm.com/estimator>

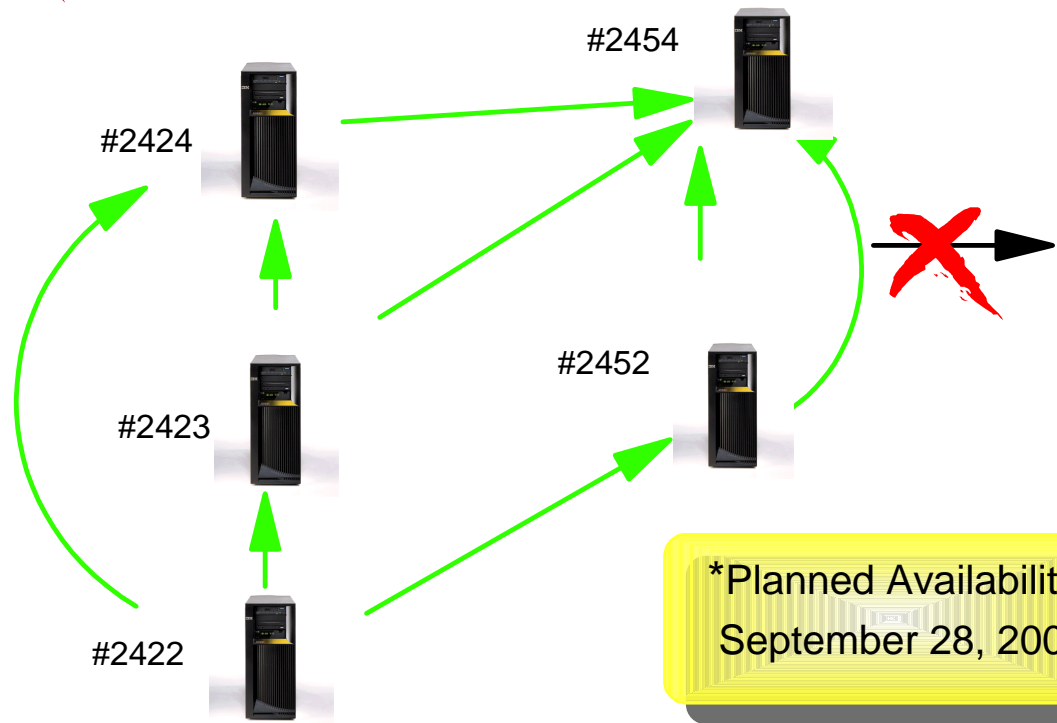
BEST/1 is the capacity planning tool included as part of Performance Tools for AS/400, licensed program 5769-PT1, or Performance Tools for iSeries, licensed program 5722-PT1.

DSD Model Upgrades

DSD Model 820 Upgrades



DSD Model 270 Upgrades*



*Planned Availability
September 28, 2001

Notes: DSD Model Upgrades

The charts presents an overview of the upgrades that will be available for the DSD Model 820 systems.

General Availability: May 25, 2001

- New Domino Processors
 - Model 270 #2452, #2454
 - Model 820 #2456, #2457, #2458
- DSD Model 820 upgrades

Planned Availability: September 28, 2001

- DSD Model 270 upgrades

Standard ⁽¹⁾ Processors

All Workloads

- ▶ Traditional
- ▶ JavaJ
- ▶ WebSphere Commerce Suite
- ▶ LinuxJ
- ▶ e-commerce
- ▶ Domino
- ▶ Web serving
- ▶ File Serving
- ▶ other...

(1) Model 270 feature code 2431 with 1518, 2432 with 1519, 2434 with 1520; Model 820 feature code, 2435, 2436, 2437, 2438; Model 830; Model 840



Base ⁽²⁾ Processors

All Compute Intensive Workloads

- ▶ JavaJ
- ▶ WebSphere Commerce Suite
- ▶ LinuxJ
- ▶ e-commerce
- ▶ Domino
- ▶ Web serving
- ▶ File Serving
- ▶ other...

(2) Model 270 feature code 2432 with 1516 or feature code 2434 with 1516; Model 820 feature code 0150, 0151, 0152



~~5250~~

Domino ⁽³⁾ Processors

Only Domino Workloads

- ▶ Domino + WebSphere
- ▶ Domino + JavaJ
- ▶ Domino + File serving
- ▶ Domino Web serving
- ▶ Domino + IBM Connect for iSeries

(3) Model 270 feature code 2452, 2454; Model 820 feature code 2456, 2457, 2458



~~5250~~

DB2 UDB for iSeries

IBM  server. For the next generation of e-business.

Standard Processors:

- For environments with both server processing capacity and interactive (5250) processing capacity through the selection of Total capacity and Interactive Processing capacity respectively.
- Note: Although not shown, the Year 2000 270s (2248, 2250, 2252, 2253) and 820s (2395, 2396, 2397, 2398) are also available. The 270-2248 and 820-2395 are actively marketed during 2001. However, the other Year 2000 270s and 820s are not actively marketed during 2001.

Base Processors:

- For customers requiring server capacity only - with no 5250 activity. These models are not upgradable

Domino-Server-on Demand:

- Specifically tailored to provide excellent price/performance for Domino workloads.

V5R1 enhancements (planned availability 9/28/01)

- Non-Domino workloads considered complementary when used with Domino
- Java Servlets
- WebSphere Application Server
- ... thus, better use of DSD System capacity



+



Note #1: Non-Domino workloads (not used with Domino) should continue to be managed to a maximum of 10-15% of the CPU

Note #2: DB2 Universal Database access is strictly limited ... up to 15% of the CPU

A refreshed version of OS/400 V5R1, with enhanced DSD support for Domino Java Servlets and WebSphere Application Server workloads will be automatically shipped on separate CDs (PRPQ 5799-DSD) for customers who order V5R1 on Domino processors between 5/25/2001 and 9/28/2001. A reinstallation of OS/400 Licensed Internal Code (CDs with a date stamp of September 28, 2001 or later) will be required to take advantage of the enhanced DSD support.

Existing customers (currently have a DSD installed) who wish to purchase OS/400 V5R1, should wait until after September 28, 2001 to take delivery and avoid reinstallation of OS/400 Licensed Internal Code.

Planned Availability: September 28, 2001

- DSD enhanced support for Java
 - Increased capacity available for complementary workloads
 - Requires "refreshed" version of V5R1 (not available via PTFs)
 - Enhancements benefit both old and new Domino processors
 - ✓ Database capacity should still be managed to 10-15% of CPU
 - ✓ The Workload Estimator should be utilized to size the impact of utilizing Java servlets in a Domino application on existing DSDs.

Changes to Domino for iSeries (release 5.0.7)

- Management of Domino servers using iSeries 400 Cluster Management APIs
 - ClusterProven™ application

ClusterProven™ application

- Can be restarted on multiple nodes (systems) in an iSeries cluster using
 - Cluster Management APIs or
 - Automatically by Cluster Management due to system failover

ClusterProven™ application resources

- Automatically configured on cluster nodes when it is configured to the cluster

iSeries only (requires OS/400 V5R1)

- Independent ASP Support
- High Speed Link (HSL) Support

Notes: Lotus Domino - High Availability

In release Lotus Domino 5.0.7, changes to Domino for iSeries will allow Domino servers to be managed through iSeries 400 Cluster Management APIs as a ClusterProven™ application

A ClusterProven™ application can be restarted on multiple nodes (systems) in an iSeries cluster using Cluster Management APIs or automatically by Cluster Management due to system failover. ClusterProven™ application resources are automatically configured on cluster nodes when it is configured to the cluster.

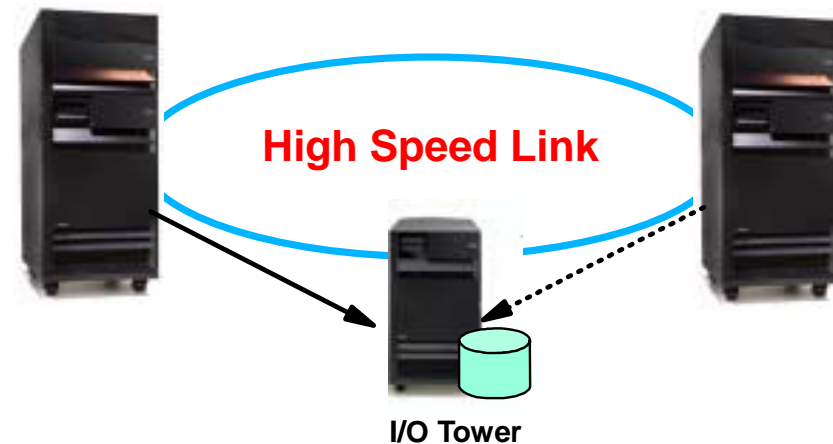
All nodes must be iSeries using HSL connections and requires OS/400 V5R1.

See the Availability presentation for more information on setting up the same Domino server on two systems (nodes) and using HSL OptiConnect along with Independent Auxiliary Storage Pool (IASP) support.

There is also a Domino for iSeries white paper on ClusterProven capabilities at:
<http://www.ibm.com/eserver/series/domino>

Independent Auxiliary Storage Pool

- "Switchable" Disks
- Transfers control of IOP/Disk between iSeries
- Requires Option 41 of OS/400
- V5R1 Support
 - IFS (Streamfiles only)
 - ▶ Excludes QSYS.LIB



With V5R1 provides support for independent auxiliary storage pools (IASP) or switched disk clustering. This facility enables one iSeries to take over data and I/O controller in a disk tower from another iSeries. Within a cluster, this means that an outage enables users to be switched to an alternate node in the cluster (another iSeries). Data which resides in an Independent Auxiliary Storage Pool (IASP) can be switched to another iSeries system without an IPL. Operations Navigator uses the term "Private Disk Pool" for an IASP.

Note: This support is currently applicable to IFS objects only (and excluding QSYS.LIB objects). The plan is to have any application object contained within this set of storage, and will be staged over multiple releases.

Switch disks uses iSeries HSL connectivity and PCI storage towers, which allows the disks to be switched between servers in the cluster, in the event of an outage. Because of the requirement for HSL the systems in the cluster must be at bus level data distances.

Cluster management middleware, shipped as part of OS/400 option 41 manages the switchover, and for high availability purposes insures that no two system access the disks at the same time.

One iSeries System

- Supports Multiple Domino server partitions
 - Independently created
 - Managed without impacting other partitions
 - Some Domino servers provide specific Services/Applications
 - ▶ QuickPlace
 - ▶ Sametime

Domino - ClusterProven™

- Manages each Domino Server Partition
 - Not the Domino Application
- Using iSeries Cluster Management APIs
 - Create, Start, End, Switch, Failover,...
- Does not affect other servers on same cluster node

ClusterProven™ Implementation ➡ **Domino Server Partition**

Multiple Domino server partitions allowed on any one system

- Independently created and managed without impacting other partitions
- Some Domino servers provide specific services (QuickPlace and Sametime)

The objective of High Availability implementation is to allow iSeries Cluster Management APIs to independently manage a specific Domino server Partition, without affecting other Domino Server Partitions on the same cluster node. The Cluster Management APIs includes capability to Create, Start, End, Switch, Failover,... of the partition.

Domino servers can be configured for a specific IP address

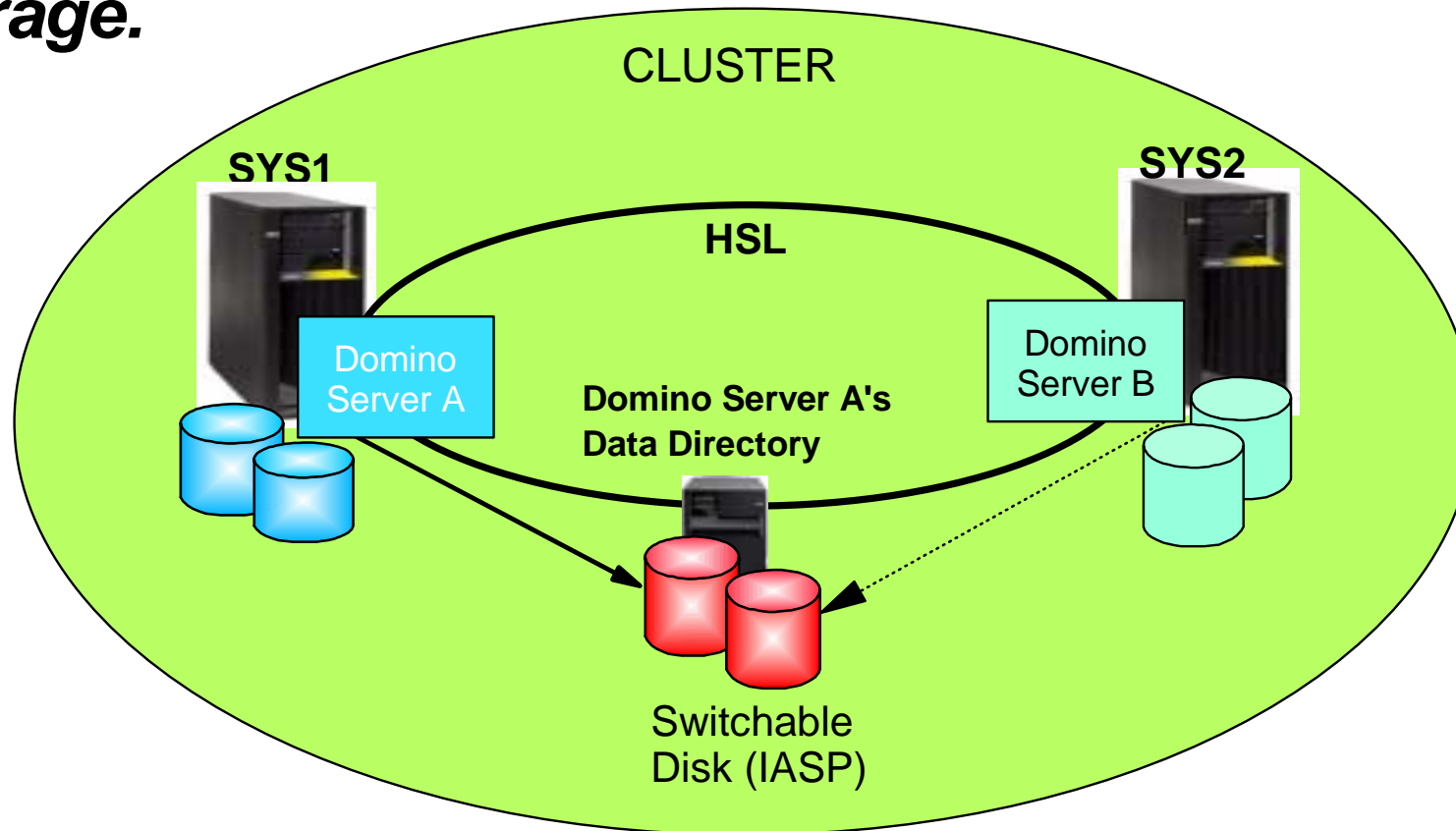
- Cluster Management provides automatic IP address takeover

Domino servers can support Domino applications

- Domino applications not managed directly by Cluster Management

NOTE: Switching disks between two systems will only switch data availability. It does not automatically switch users. For example, when switching Domino server from one machine to another machine, you must ensure that user profiles and other system objects that use the Domino server are duplicated at the system level first before switching the disks.

Domino server can be defined on more than one system. Its data directory can reside on switchable storage.



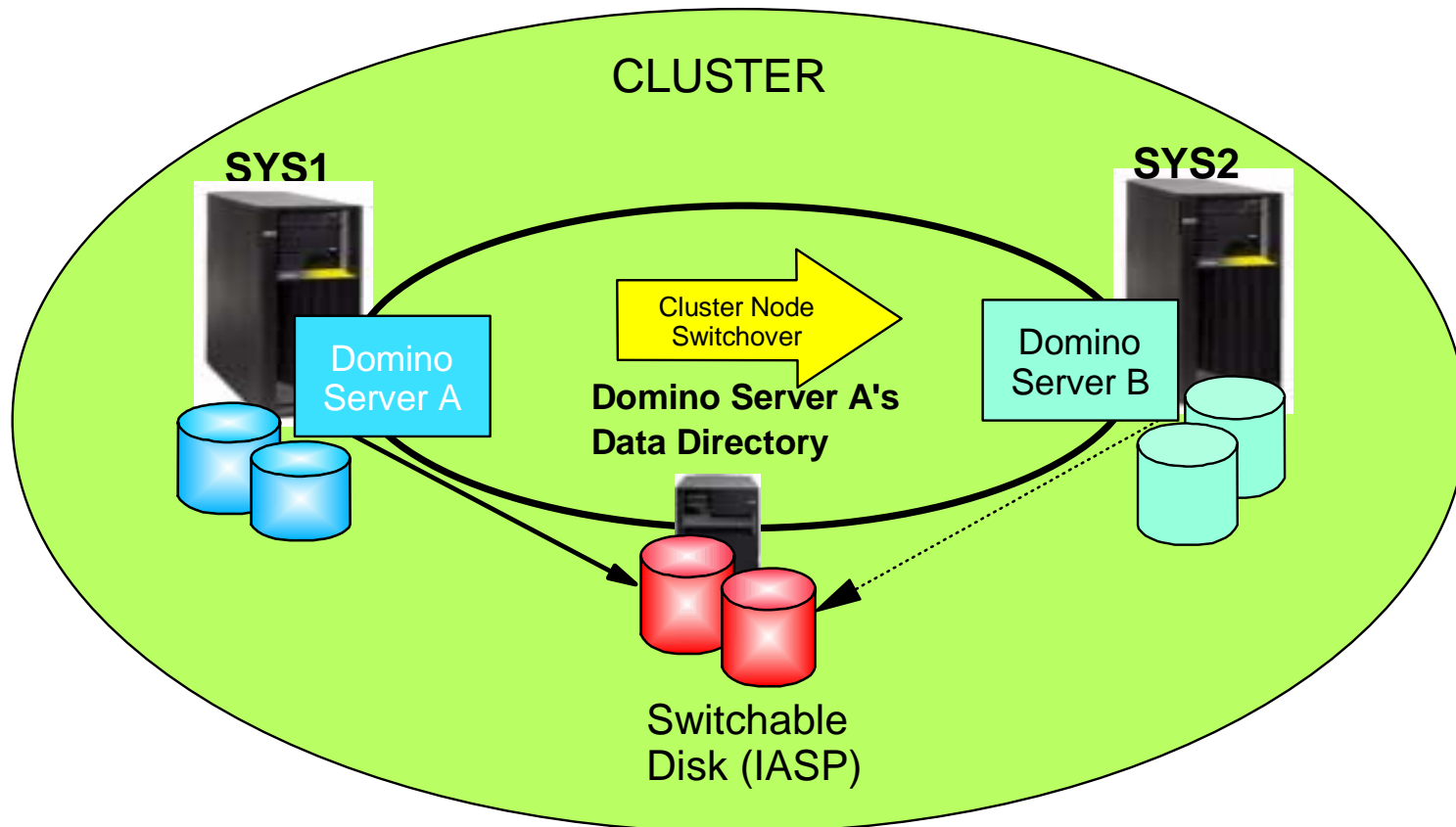
Allows a Domino server's data to be switched from one iSeries system to another

Domino data is represented in the iSeries as streamfiles located within the IFS (and not in QSYS.LIB objects). With V5R1 these streamfiles can be located on a Independent Auxiliary Storage Pool (IASP), which is stored on a set of switchable disk drives defined for a cluster of two iSeries systems.

Note: New for V5R1 HSL OptiConnect (OS/400 Option 23 - OptiConnect) is required for the "network" shown in this figure. This HSL adapters available on the 270, 820, and 840 models announced April 2001 or new HSL adapters ordered for the Year 2000 830 and 840 models are also required.) OS/400 Option 41 - HA Switchable Resource, additional cost licensed option is also required.

You do not need Option 23 if you are using the SPD OptiConnect hardware or 1 GB/sec Ethernet connection among the AS/400 or iSeries models. Option 41 is required.

Domino Switchover / Failover



Same server can be started on another iSeries system and access same Data Directory

Notes: Domino Switchover/Failover

IBM  server iSeries

When the production Domino Server is taken offline (for maintenance or due to failure), the secondary Server will take on the IP address of the primary system and take control of the switchover disk drives including the Domino dataset directory.

IBM  server. For the next generation of e-business.

Clustering for high availability

- Requires only one copy of server's Data Directory and its Domino databases
 - Reduced or eliminated Domino replication overhead
 - Savings on DASD usage

Same server can be "moved"

- Between systems or logical partitions
- Scheduled logical partition (LPAR) or System maintenance

Cluster Management Failover

- Can automatically start Server on secondary system

Domino servers can be managed by BP provided Cluster Management tools or IBM's Cluster Management Utility (Operations Navigator

- (or OS/400 APIs and CL commands)

Clustering for high availability

- Requires only one copy of server's Data Directory and its Domino databases
 - Reduced or eliminated Domino replication overhead
 - Savings on DASD usage

Same server can be "moved" between systems or logical partitions

- Scheduled logical partition or system maintenance

Cluster management Failover can automatically start Server on secondary system

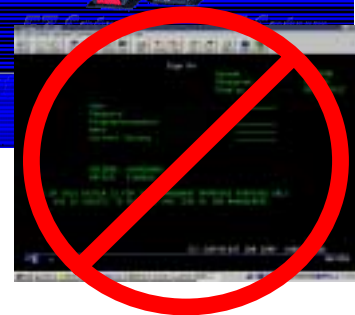
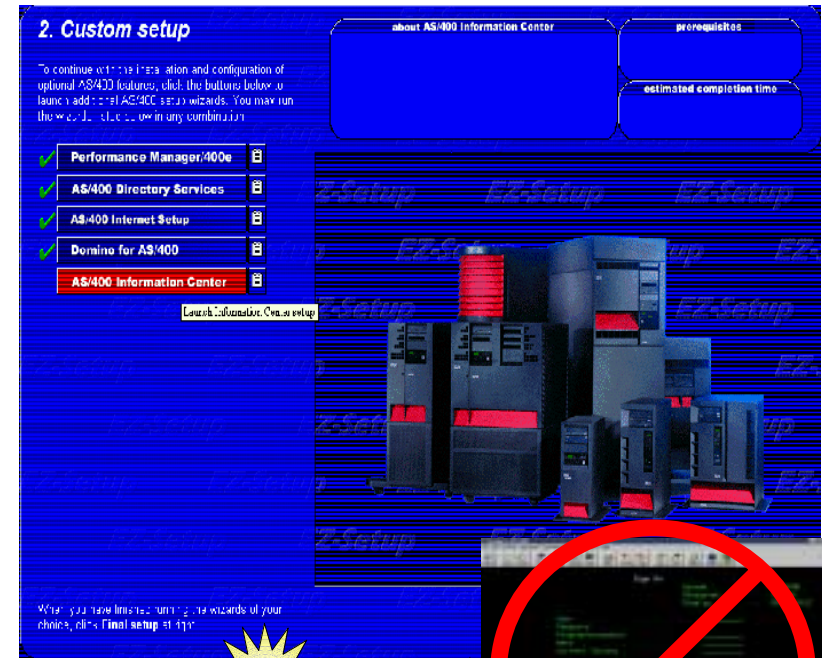
Domino servers can be managed by BP provided Cluster Management tools or IBM's Cluster Management Utility (or OS/400 APIs and CL commands)

Domino servers can be configured for a specific IP address and Cluster Management provides automatic IP address takeover.

EZ Setup Wizard for Domino

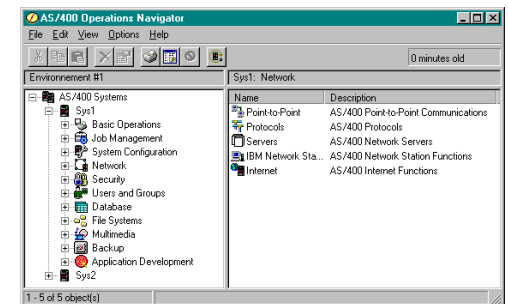
More comprehensive EZ-Setup for iSeries

- Sets up Operations Console
- Optional installation/configuration of
- LDAP
- **Domino**
- Web Servers
- PM/400
- Info Center



Client Access Express installable component:

- Installed by the Client Access Express Install program
- Serviced using the Client Access Express Service Pack process
- Integrated with the Client Access Express CD Browser program



Notes: EZ Setup Wizard for Domino

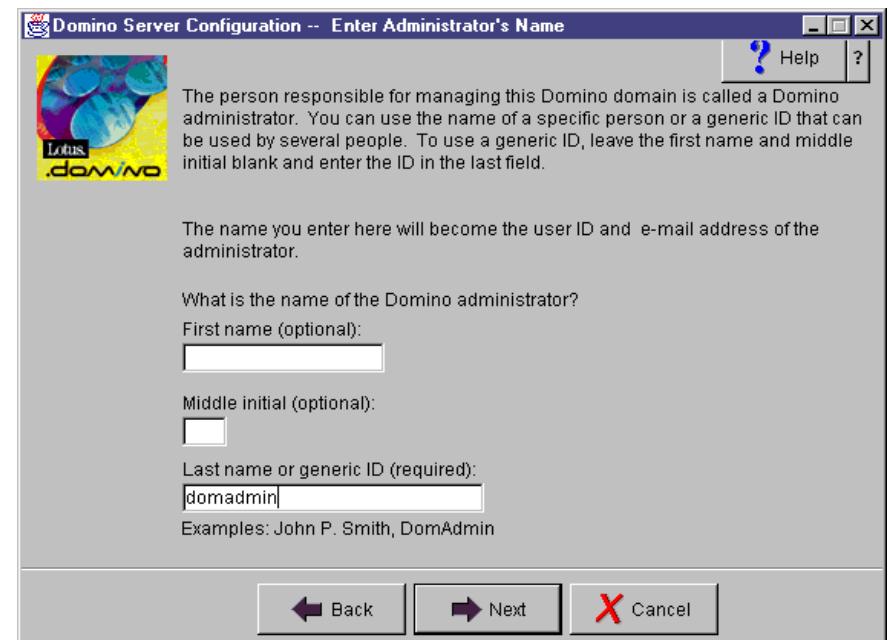
In previous releases, EZ-Setup concentrated on basic setup tasks. In V5R1, EZ-Setup takes the user a step further. The EZ-Setup program configures the iSeries to be none, one or more of the following:

- Domino Notes server
- Internet server
- LDAP server or user of LDAP

EZ-Setup will present the following additional setup tasks:

- Install Information Centre
- Turn on PM400

Note that EZ1 still requires the Operations Console cable as the only way to connect and perform the initial configuration of the AS/400. LAN Console is not supported



OS/400 Release and Domino for iSeries (AS/400) Release Summaries

IBM @server. For the next generation of e-business.

OS/400 Release and Domino Release Summary

- OS/400 V5R1 and Domino R5.0.6a.01 or later required on 270 #2452, #2454, #2456 and 820 #2456, #2457, #2458 (April 2001 DSDs)
- OS/400 V5R1 on other AS/400 or iSeries models:
 - Domino 5.0.5.02 QMU and 5.0.6a.01 QMU are supported
 - Domino 5.0.7 or later release recommended
- OS/400 V4R5 generally required for:
 - Domino 5.0.8 or later
- OS/400 V4R4 supported for Domino 5.0.8 or later if:
 - Customer purchased OS/400 V4R4 extended support (through November 2001)
 - ▶ OS/400 V4R4 general support ends May 31, 2001

IBM  **server.** For the next generation of e-business.

Domino-related Products

IBM @server. For the next generation of e-business.

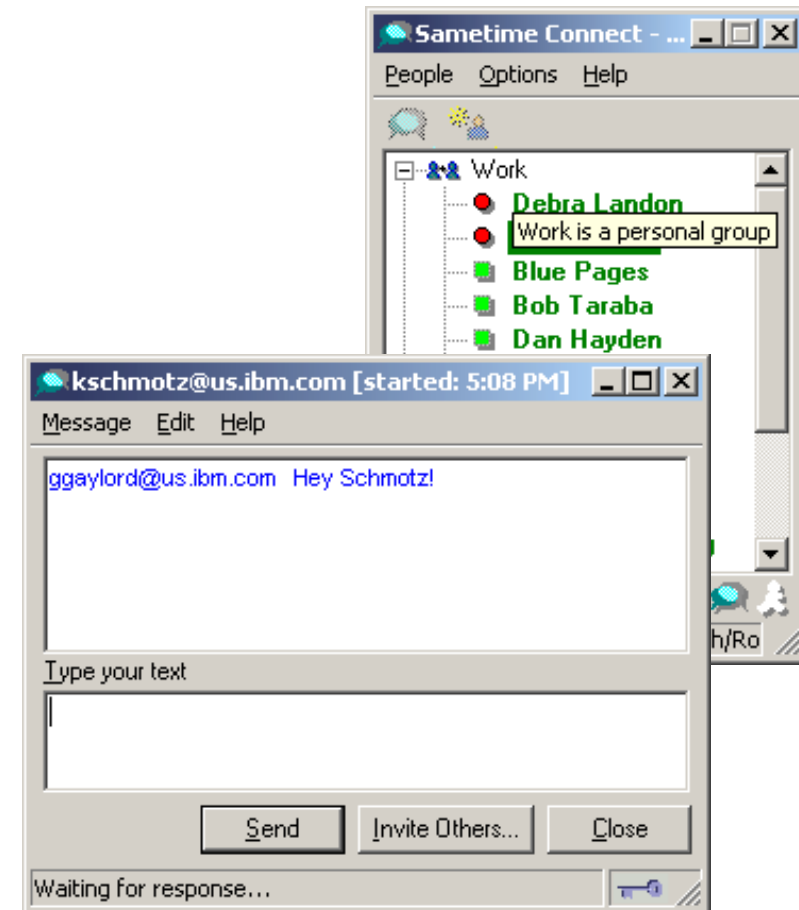
Sametime: Lotus Extension Product

Sametime:

- Extends collaboration infrastructure
 - Real-time "meeting" and "community" services
- Provides online "chat" capability
- Chat/awareness + meeting services
- iSeries Availability
 - Planned release - Sametime 2.0 2001
 - ▶ Current NT release 2.0

The benefits

- Instantly improve communications within your work team
- Dramatically reduce time to market
- Help you form closer ties with partners
- Improve customer communication and support
- Reduce travel time and expense



Lotus Sametime is a family of real-time collaboration products that provides online awareness, communication, and document sharing capabilities. Sametime brings the flexibility and efficiency of real-time communication to the business world.

Sametime also provides live document and application sharing. Whether the goal is to present a new program to a field sales force or to offer live assistance to Web customers, Sametime delivers real-time collaboration today. It provides the ability to see materials, interact and collaborate, contribute and make informed decisions, as if you are in a conference room with your team regardless of where they may be located.

For more information on Sametime, please refer to the .pdf file on "Getting Ready for Sametime" at:
<http://www-1.ibm.com/servers/eserver/series/sametime/pdf/stprep.pdf>

QuickPlace: Lotus Extension Product

Available on iSeries since 12/99

- Web-based team collaboration
 - ▶ Instant Creation
 - Shared Content
 - Shared Sense Of Time
 - Shared Process and Identity
 - Shared Knowledge
 - Deep Customization
- Coincides with Domino Releases
- Incremental install in 2.0.6a

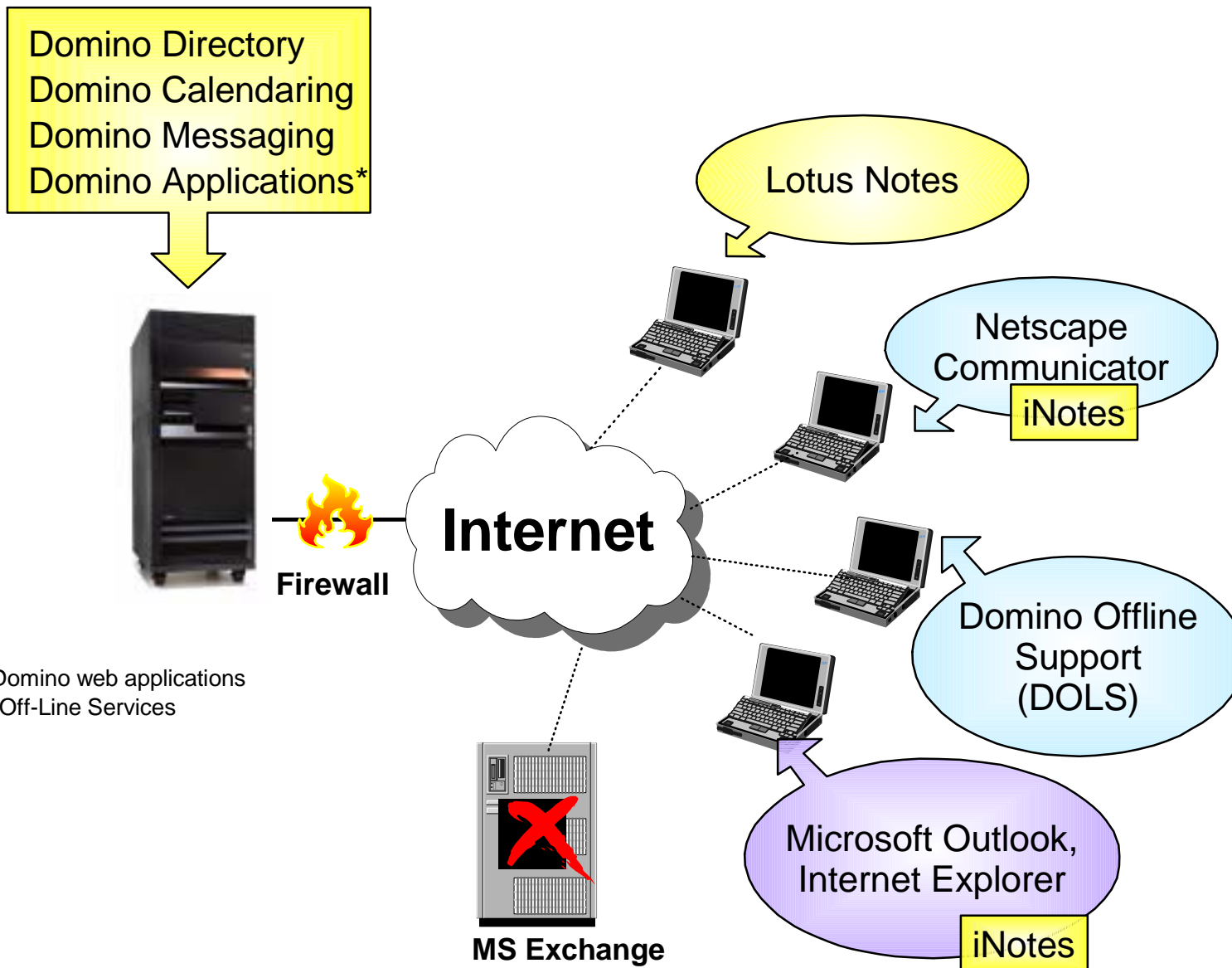
Lotus QuickPlace is a team collaboration solution that allows non-technical professionals to instantly create an electronic shared workspace to support a task, project, or initiative. It enables the creation of a team workspace on the Web -- instantly! Teams use QuickPlace to share and organize ideas, content and tasks around any project or ad-hoc initiative. QuickPlace provides a central on-line workspace structured for productivity -- and because QuickPlace breaks down the barriers to working together outside the firewall, secure Web collaboration with suppliers, partners and customers is only seconds away. With browser access to an intranet or the Internet, authorized team members can access the workspace to communicate, share knowledge and ideas, maintain a project calendar, organize team information, and more...

This revolutionary Web-based team application is now available for iSeries. You have the option of running QuickPlace as an independent iSeries application (without Domino) or adding it as an application on a Domino for iSeries server. iSeries servers give you the flexibility, reliability, and scalability you need to put QuickPlace to work and make your team projects more effective immediately.

- Instant Creation - A secure Web workspace is instantly created - - regardless of location - - is immediate
- Shared Content - Team discussion and documents are maintained in a single, secure location - no more lost e-mails or confusion over who modified what/when. Check OUT/Check IN support for multiple editors.
- Shared Sense Of Time - Track assigned tasks, milestones, meetings and events. Team Newsletters and chat provide an active pulse for the team - everyone is on the same page.
- Shared Process and Identity - As projects and initiatives evolve, QuickPlace adapts. Modify structure to accommodate new content or sub team requirements, create custom forms with workflow, update look and feel - all with point and click ease from a browser - no special software to install or HTML skills required.
- Shared Knowledge - QuickPlace captures the applied structure and knowledge of a workspace into a reusable asset that can be shared throughout the organization for maximum value.
- Deep Customization - QuickPlace Release 2 provides new hooks for the corporate developer and ISV/partner. The gradient of customization affords opportunity ranging from browser based customization, HTML design, Java agents, server extensions and more. Release 2 extends QuickPlace beyond an instant collaboration application to a platform for the delivery of instant collaborative solutions!

iSeries with iNotes Clients

Delivering the power of iSeries and Domino Mobility to New Users



*Enable custom Domino web applications through Domino Off-Line Services

Lotus iNotes Access for Microsoft Outlook is part of the iNotes client offering that provides Microsoft Outlook 98 and 2000 clients with the ability to use a Domino server as a mail and calendaring back end in place of a Microsoft Exchange server. Without changing clients, organizations can now improve the reliability and scalability of their messaging infrastructure, and add e-collaboration, by upgrading from Microsoft Exchange to Domino for AS/400.

Lotus iNotes Web Access (available with release 5.0.8) is an advanced Web client that delivers all the power and flexibility of the Lotus Domino collaborative infrastructure to Web browser users, whether they're on-line or disconnected from the network.

The iNotes license is a new Lotus client offering that includes the following:

- A client access license for authenticated access to a Domino server
- Use of a Domino mailbox via web browser, IMAP, HTTP, or MAPI
- Access to Domino applications and services via HTTP, NNTP, LDAP
- iNotes Sync Manager, which provides off-line access to Domino applications
- iNotes Access for Microsoft Outlook, which allows Outlook 98/2000 users to access Domino messaging natively

iNotes and Domino on iSeries offer a great combination of scalability, reliability and enhanced function to customers who have implemented browser or Outlook clients!

Domino Off-Line Services (DOLS) provides iNotes clients and browser users "off-line" access to Domino applications. It is a component of Lotus iNotes that enables the end user to set application replication options.

www.lotus.com/iNotes and www.lotus.com/OfflineServices

IBM  server. For the next generation of e-business.

Current QMRs

- 5.0.5 - Oct 2000
- 5.0.6a - Feb 2001
- 5.0.7 - April 2001
 - 5.07 is not supported on V4R3 (OS/400 V4R3 support has ended)
- Minimum QMR supported on V5R1 is 5.05.02
 - New 270/820 DSDs require Domino 5.0.6a

Projected Availability for future QMRs

- 5.0.8 - Planned for Summer 2001
 - 5.0.8 or later will not be supported on OS/400 V4R4 unless customer has purchased OS/400 V4R4 extended support (through November 2001)
 - OS/400 V4R4 support formally ends 5/31/01

Client Subscription Offering

- July 1, 2001

Domino 5.0.7 and 5.0.8 - target V5R1 new features

Client Subscription Offering

IBM intends to provide on or about July 1, 2001, a new offering for customers to renew their software subscription entitlement for Lotus Domino clients previously purchased under Lotus Domino Enterprise Server for AS/400 (5769-LNT). Under the new offering, customers can purchase client entitlement for one year of subscription at a price similar to Lotus' Passport Advantage. The terms of the current offering for Lotus Domino client software subscription are extended until the new offering is announced.

For additional information about initial client subscription coverage, please refer to Software Announcement 299-358, dated November 30, 1999, Client Subscription for Lotus Domino for AS/400.

OfficeVision/400 and V5R1

IBM @server. For the next generation of e-business.

Background

- OV/400 support (PTFs etc.) ends 31st May 2001
- OS/400 V5R1 will delete OV/400
 - applications may be affected

Strategic Direction is Lotus Notes & Domino

- IBM 5697-F08 OV/400 to Notes Migration Tool
 - Base feature withdrawn from marketing 31st May 2001
 - BlueNotes features relaunched as 5620-BNY

Actions

- Check if OV/400 is installed and in use
- Order Migration Tools and features **ASAP**
- Upgrade OV/400 licenses to Notes licenses
- Migrate users and rework OV-based apps

OV/400 Migration: <http://www.dominodotoffice.com>

Redbook for OV based applications, SG24-5406

Of the 90,000 licenses of OV/400 sold it is estimated that 30,000 are still in use, either for end users or by OV-integrated applications. The last shipped release of OfficeVision/400 was V4R2 which is 'skip-shipped' to run with later releases of OS/400. The support for CISC versions ended with all such software in May 2000. The end of support for RISC versions has been fixed at 31st May 2001.

IBM previously announced that OS/400 V4R4 was the last release which would allow OV/400 to run but subsequently agreed to slip this to V4R5. It will not work with V5R1. This means that when OS/400 V5R1 is installed it will delete OV/400. It may be possible to reinstall the software and it may function in part in some environments but this is untested and unsupported. Applications using OV/400 and the related OS/400 commands may fail or give unpredictable results.

The strategic direction for customers is to move to Lotus Notes and Domino on iSeries and considerable support has been put in place to enable this.

IBM Software Business has announced the end of marketing of 5697-F08 OfficeVision to Lotus Notes Migration Tool for AS/400 with effect from 31st May 2001. The various BlueNotes features (Document Warehouse, Data Merge, Office Portal and BluePages) will be available worldwide under the existing BNDW product number 5620-BNY. Many customers are unaware that OV/400 is in use. They need to check. Details of how to do this are given in the Redbook below. They will need to order the Migration Tools ASAP if they require e-mail and calendar migration. They can order reduced-price Notes licenses as an upgrade from the equivalent number of OV/400 licensed users. The migration process usually takes several months. Reworking applications will take longer.

The 'dominodotoffice' Web site for OV/400 Migration support will remain. A new Project Guide is available there, together with FAQs, downloads and a list of all the 200+ IBM-trained OV/400 migration BPs in the world. The 'application' Redbook can be downloaded from the usual IBM Redbooks site.

BlueNotes: Domino for iSeries Extension Products

New release of IBM 5620-BNY

- BlueNotes Document Warehouse (BNDW)
 - Integrates Domino with OS/400 File System
 - New release adds IFS, Intel and Web support
 - Used in MS Exchange Migration, Consolidation and KM
- BlueNotes Data Merge (BNDM)
 - Integrates Domino with DB2/400
 - New release adds web-based reports and statements
 - Used in CRM and e-business
- BlueNotes BluePages (BNBP) - new Module
 - Integrates Domino with OS/400 Directory
 - Graphical and LDAP-enabled System Distribution Directory
 - Used in Migration, Consolidation, HR, Knowledge Management (KM) and e-business

<http://www.bluenotes.com>

IBM @server. For the next generation of e-business.

IBM's BNDW product (BlueNotes Document Warehouse) integrates your AS/400 documents, spool and PC office applications with Notes and Domino and turns AS/400 into a fast PC file server. Applications can include SmartSuite and MS Office files, OfficeVision/400 documents, images, video, faxes, converted spool files and Lotus Domino.Doc.

Like a Data Warehouse, but for documents

- collects, refreshes and simplifies /QDLS's index
- selectively replicates to one or more Domino servers
- adds Domino value to the index
 - Notes & Web interface
 - combined view across multiple servers
 - 'logical folder' views based on index fields
 - search facility on index data
 -makes it easier to find that document!
- provides a 'Shortcut' back to the AS/400 document
- launches editors and viewers to 'mine' the documents

BlueNotes is a set of iSeries to Domino Extension Products. They have their uses in OV/400 migration but are of much wider application. IBM 5620-BNY was the product number for BlueNotes Document Warehouse (BNDW for AS/400) in EMEA before the OV/400 Migration Tools did their special price bundle of this and the other BlueNotes products. It will be used to make the entire BlueNotes family available worldwide without the Tools. They will be at a later version/release level than currently. Full details are given at the Forum's BlueNotes overview session or subsequently at COMMON US and EMEA and at iSeries Technical Conference.

Further details are available at bluenotes.com.

Major business requirement

- 'Discover what you know'
- Strategic products now all in place on iSeries

Lotus Domino

- Lotus Discovery Server (on IXS)
- Lotus Domino.Doc document library
- IBM SecureWay Directory (in OS/400)
- IBM BlueNotes integration tools

You do not buy KM, you build it, so start now!

<http://www.lotus.com/home.nsf/welcome/km>

KM is a complex area and there is usually a lot of preparation involved before the KM tools themselves can be implemented. Although the 'Raven' suite from Lotus (NT only) requires IXS support the bulk of the data which it will require may be kept on iSeries natively. There is an existing range of tools which help to position for Knowledge Management on iSeries. Full details are at the Forum's KM session or subsequently at COMMON US and EMEA and at iSeries Technical Conference.

Trademarks & Disclaimers

© Copyright International Business Machines Corporation 2001

References in this document to IBM products or services do not imply that IBM intends to make them available in every country.

The following terms are trademarks or registered trademarks of International Business Machines Corporation in the United States, other countries, or both

AIX	Application Development	AS/400
AS/400e	DB2	Domino
IBM	OfficeVision	OS/400
Integrated Language Environment	Net.Commerce	Net.Data
PowerPC	PowerPC AS	SanFrancisco
Host on Demand	Screen Publisher	Host Publisher
PCOM	WebSphere Commerce Suite	Payment Manager
WebSphere	WebSphere Standard Edition	WebSphere Advanced Edition
MQSeries	MQSeries Integrator	Host Integration Series
WebSphere Development Tools for AS/400	VisualAge for Java	VisualAge for RPG
CODE/400	DB2 UDB for AS/400	HTTP Server for AS/400
iSeries		

Lotus, Freelance, and Word Pro are trademarks of Lotus Development Corporation in the United States, other countries, or both.

Tivoli and NetView are trademarks of Tivoli Systems Inc. in the United States, other countries, or both.

C-bus is a trademark of Corollary, Inc. in the United States, other countries, or both.

Java and all Java-based trademarks and logos are trademarks or registered trademarks of Sun Microsystems, Inc. in the United States, other countries, or both.

Microsoft, Windows, Windows NT, and the Windows logo are trademarks of Microsoft Corporation in the United States, other countries, or both.

PC Direct is a trademark of Ziff Communications Company in the United States, other countries, or both and is used by IBM Corporation under license.

ActionMedia, LANDesk, MMX, Pentium and ProShare are trademarks of Intel Corporation in the United States, other countries, or both.

UNIX is a registered trademark of The Open Group in the United States and other countries.

SET and the SET Logo are trademarks owned by SET Secure Electronic Transaction LLC.

Other company, product and service names may be trademarks or service marks of others.

Information is provided "AS IS" without warranty of any kind.

All customer examples described are presented as illustrations of how those customers have used IBM products and the results they may have achieved. Actual environmental costs and performance characteristics may vary by customer.


Information in this presentation concerning non-IBM products was obtained from a supplier of these products, published announcement material, or other publicly available sources and does not constitute an endorsement of such products by IBM. Sources for non-IBM list prices and performance numbers are taken from publicly available information, including vendor announcements and vendor worldwide homepages. IBM has not tested these products and cannot confirm the accuracy of performance, capability, or any other claims related to non-IBM products. Questions on the capability of non-IBM products should be addressed to the supplier of those products.

All statements regarding IBM future direction and intent are subject to change or withdrawal without notice, and represent goals and objectives only. Contact your local IBM office or IBM authorized reseller for the full text of the specific Statement of Direction.

Some information in this presentation addresses anticipated future capabilities. Such information is not intended as a definitive statement of a commitment to specific levels of performance, function or delivery schedules with respect to any future products. Such commitments are only made in IBM product announcements. The information is presented here to communicate IBM's current investment and development activities as a good faith effort to help with our customers' future planning.

Performance is based on measurements and projections using standard IBM benchmarks in a controlled environment. The actual throughput or performance that any user will experience will vary depending upon considerations such as the amount of multiprogramming in the user's job stream, the I/O configuration, the storage configuration, and the workload processed. Therefore, no assurance can be given that an individual user will achieve throughput or performance improvements equivalent to the ratios stated here.

Photographs shown are of engineering prototypes. Changes may be incorporated in production models.

IBM  server. For the next generation of e-business.