

Brocade 8 Gb 10-Port and 20-Port SAN Switch Modules  
for IBM BladeCenter



# Installation and User's Guide



Brocade 8 Gb 10-Port and 20-Port SAN Switch Modules  
for IBM BladeCenter



# Installation and User's Guide

**Note:** Before using this information and the product it supports, read the general information in Appendix C, "Warranty," on page 59 and Appendix D, "Notices," on page 79; and read the *IBM Safety Information* and the *IBM Systems Environmental Notices and User Guide* on the IBM Support CD

**First Edition (April 2009)**

**© Copyright International Business Machines Corporation 2009.**

US Government Users Restricted Rights – Use, duplication or disclosure restricted by GSA ADP Schedule Contract with IBM Corp.

---

# Contents

<b>Safety</b>	v
<b>Chapter 1. Introduction</b>	1
Inventory checklist	5
Related documentation	5
IBM documentation	5
Brocade documentation	7
The IBM Support CD	8
Hardware and software requirements	8
Notices and statements in this document	8
Features, specifications, and standards	9
Major components of the I/O module	14
<b>Chapter 2. Installing, removing, replacing, and enabling an I/O module</b>	15
I/O module preinstallation checklist	15
Expansion card requirements	16
Installation guidelines	18
System reliability guidelines	18
Handling static-sensitive devices	19
Installing an I/O module	19
Removing or replacing an I/O module	23
Enabling the I/O module and its external ports	25
<b>Chapter 3. Information panel LEDs and external Fibre Channel ports</b>	27
Information panel and internal connectors	27
Information LEDs	28
LED states and colors	29
System status LEDs	30
Fibre Channel external port LEDs	31
LED activities and diagnostic flash patterns	33
<b>Chapter 4. Configuring the I/O module through a Telnet interface</b>	35
Connecting to the I/O module	36
Establishing a Telnet session through the advanced management module	36
Establishing a Telnet session through a terminal emulator program	37
CLI command format	40
<b>Chapter 5. Configuring the I/O module through the Web Tools interface</b>	41
Connecting to the I/O module	42
Establishing a Web-interface session through the advanced management module	42
Establishing a Web-interface session through a Web browser	44
<b>Chapter 6. Optional features of the Brocade SAN switch modules</b>	47
<b>Chapter 7. Parts listing</b>	49
<b>Chapter 8. Solving problems</b>	51
Running POST	51
POST errors	51
Troubleshooting checklist	52
<b>Appendix A. Removing the battery</b>	55

<b>Appendix B. Getting help and technical assistance</b>	57
Before you call	57
Using the documentation	57
Getting help and information from the World Wide Web	57
Software service and support	58
Hardware service and support	58
IBM Taiwan product service	58
<b>Appendix C. Warranty</b>	59
IBM Statement of Limited Warranty Z125-4753-10 08/2008	59
Part 1 - General Terms	59
Part 2 - Country-unique Terms	63
Part 3 - Warranty Information	75
<b>Appendix D. Notices</b>	79
Trademarks	79
Important notes	80
Electronic emission notices	81
Federal Communications Commission (FCC) statement	81
Industry Canada Class A emission compliance statement	81
Avis de conformité à la réglementation d'Industrie Canada	81
Australia and New Zealand Class A statement	81
United Kingdom telecommunications safety requirement	81
European Union EMC Directive conformance statement	81
Taiwanese Class A warning statement	82
Germany Electromagnetic Compatibility Directive	82
Deutschland: Einhaltung des Gesetzes über die elektromagnetische	
Verträglichkeit von Geräten	83
Zulassungsbescheinigung laut dem Deutschen Gesetz über die	
elektromagnetische Verträglichkeit von Geräten (EMVG) (bzw. der EMC	
EG Richtlinie 2004/108/EG) für Geräte der Klasse A	83
People's Republic of China Class A warning statement	83
Japanese Voluntary Control Council for Interference (VCCI) statement	83
Korean Class A warning statement	83
<b>Index</b>	85

## Safety

Before installing this product, read the Safety Information.

قبل تركيب هذا المنتج، يجب قراءة الملاحظات الأمنية

Antes de instalar este produto, leia as Informações de Segurança.

在安装本产品之前，请仔细阅读 **Safety Information** (安全信息)。

安裝本產品之前，請先閱讀「安全資訊」。

Prije instalacije ovog produkta obavezno pročitajte Sigurnosne Upute.

Před instalací tohoto produktu si přečtěte příručku bezpečnostních instrukcí.

Læs sikkerhedsforskrifterne, før du installerer dette produkt.

Lees voordat u dit product installeert eerst de veiligheidsvoorschriften.

Ennen kuin asennat tämän tuotteen, lue turvaohjeet kohdasta Safety Information.

Avant d'installer ce produit, lisez les consignes de sécurité.

Vor der Installation dieses Produkts die Sicherheitshinweise lesen.

Πριν εγκαταστήσετε το προϊόν αυτό, διαβάστε τις πληροφορίες ασφαλείας (safety information).

לפני שתתקינו מוצר זה, קראו את הוראות הבטיחות.

A termék telepítése előtt olvassa el a Biztonsági előírásokat!

Prima di installare questo prodotto, leggere le Informazioni sulla Sicurezza.

製品の設置の前に、安全情報をお読みください。

본 제품을 설치하기 전에 안전 정보를 읽으십시오.

Пред да се инсталира овој продукт, прочитајте информацијата за безбедност.

Les sikkerhetsinformasjonen (Safety Information) før du installerer dette produktet.

Przed zainstalowaniem tego produktu, należy zapoznać się z książką "Informacje dotyczące bezpieczeństwa" (Safety Information).

Antes de instalar este produto, leia as Informações sobre Segurança.

Перед установкой продукта прочтите инструкции по технике безопасности.

Pred inštaláciou tohto zariadenia si pečítajte Bezpečnostné predpisy.

Pred namestitvijo tega proizvoda preberite Varnostne informacije.

Antes de instalar este producto, lea la información de seguridad.

Läs säkerhetsinformationen innan du installerar den här produkten.

**Important:**

Each caution and danger statement in this document is labeled with a number. This number is used to cross reference an English-language caution or danger statement with translated versions of the caution or danger statement in the *Safety Information* document.

For example, if a caution statement is labeled “Statement 1,” translations for that caution statement are in the *Safety Information* document under “Statement 1.”

Be sure to read all caution and danger statements in this document before you perform the procedures. Read any additional safety information that comes with the server or optional device before you install the device.

This device is intended for use with UL Listed IBM BladeCenters.



**Statement 1:**



**DANGER**

**Electrical current from power, telephone, and communication cables is hazardous.**

**To avoid a shock hazard:**

- **Do not connect or disconnect any cables or perform installation, maintenance, or reconfiguration of this product during an electrical storm.**
- **Connect all power cords to a properly wired and grounded electrical outlet.**
- **Connect to properly wired outlets any equipment that will be attached to this product.**
- **When possible, use one hand only to connect or disconnect signal cables.**
- **Never turn on any equipment when there is evidence of fire, water, or structural damage.**
- **Disconnect the attached power cords, telecommunications systems, networks, and modems before you open the device covers, unless instructed otherwise in the installation and configuration procedures.**
- **Connect and disconnect cables as described in the following table when installing, moving, or opening covers on this product or attached devices.**

**To Connect:**

1. Turn everything OFF.
2. First, attach all cables to devices.
3. Attach signal cables to connectors.
4. Attach power cords to outlet.
5. Turn device ON.

**To Disconnect:**

1. Turn everything OFF.
2. First, remove power cords from outlet.
3. Remove signal cables from connectors.
4. Remove all cables from devices.

**Statement 2:**



**CAUTION:**

When replacing the lithium battery, use only IBM Part Number 33F8354 or an equivalent type battery recommended by the manufacturer. If your system has a module containing a lithium battery, replace it only with the same module type made by the same manufacturer. The battery contains lithium and can explode if not properly used, handled, or disposed of.

*Do not:*

- **Throw or immerse into water**
- **Heat to more than 100°C (212°F)**
- **Repair or disassemble**

**Dispose of the battery as required by local ordinances or regulations.**

**Statement 3:**



**CAUTION:**

When laser products (such as CD-ROMs, DVD drives, fiber optic devices, or transmitters) are installed, note the following:

- Do not remove the covers. Removing the covers of the laser product could result in exposure to hazardous laser radiation. There are no serviceable parts inside the device.
- Use of controls or adjustments or performance of procedures other than those specified herein might result in hazardous radiation exposure.



**DANGER**

Some laser products contain an embedded Class 3A or Class 3B laser diode. Note the following.

Laser radiation when open. Do not stare into the beam, do not view directly with optical instruments, and avoid direct exposure to the beam.



Class 1 Laser Product  
Laser Klasse 1  
Laser Klass 1  
Luokan 1 Laserlaite  
Appareil À Laser de Classe 1

**Statement 8:**



**CAUTION:**

**Never remove the cover on a power supply or any part that has the following label attached.**



**Hazardous voltage, current, and energy levels are present inside any component that has this label attached. There are no serviceable parts inside these components. If you suspect a problem with one of these parts, contact a service technician.**

---

## Chapter 1. Introduction

The Brocade 8 Gb I/O modules provide a fully interoperable solution for seamless integration of the Fibre Channel initiators to an existing fabric. These Brocade I/O modules use industry-standard Node port ID virtualization (NPIV) technology to provide a cost-effective connectivity solution for the IBM® BladeCenter® unit. These Brocade I/O modules are Fibre Channel components that contain either 10 or 20 ports. For additional information, see “Features, specifications, and standards” on page 9.

This *Installation and User's Guide* contains the following instructions and information:

- Installing, removing, and replacing the following types of I/O modules:
  - Brocade 10-Port 8 Gb SAN Switch Module for IBM BladeCenter
  - Brocade 20-Port 8 Gb SAN Switch Module for IBM BladeCenter
- Enabling the I/O module and its external ports
- Using the information panel, LEDs, and external ports on the I/O module
- Configuring the I/O module through a Telnet interface
- Configuring the I/O module through a Web browser interface
- Upgrading and expanding the functionality of the I/O module
- Performing basic troubleshooting tasks and solving problems with the I/O module
- Getting help, service, and technical assistance

### Notes:

1. Throughout this document, the following terminology applies for the purpose of brevity:
  - Including the references to screen contents, the various types of Brocade 8 Gb SAN switch module products are generically referred to as the I/O module or the switch module. With respect to certain screen contents or titles, an I/O module might be referred to as a switch module or switch, because the term *switch module* or *switch* appears on those screens.
  - The various types of Brocade 8 Gb I/O modules are collectively referred to as the full fabric modules.
  - The Brocade 10-Port 8 Gb SAN Switch Module for IBM BladeCenter is specifically referred to as the 10-port full fabric switch.
  - The Brocade 20-Port 8 Gb SAN Switch Module for IBM BladeCenter is specifically referred to as the 20-port full fabric switch.
2. Unless otherwise stated, references to the BladeCenter unit apply to all BladeCenter units that support the I/O module. As of the date of this document, the following devices are examples of applicable BladeCenter units:
  - BladeCenter E unit (also known as the BladeCenter Type 8677 unit)
  - BladeCenter H unit
  - BladeCenter HT unit
3. Unless otherwise stated, references to the blade server apply to all blade servers that support the I/O module and expansion card.
4. The illustrations in this document might differ slightly from your hardware.
5. The screens that are described or referred to in this document might differ slightly from the screens that are displayed by your system. Screen content varies according to the type of BladeCenter unit and the firmware versions and options that are installed.

6. Unless otherwise stated, references to the management module apply only to the BladeCenter Advanced Management Module, which is the only type of management module that supports the I/O module.

The Brocade 10-Port 8 Gb SAN Switch Module for IBM BladeCenter is a full fabric module and a Fibre Channel component that can be upgraded to the 20-port full fabric switch through the application of an optional license key. The 10-port full fabric switch has the following ports:

- Seven internal ports to connect to the blade-server bays in the BladeCenter unit
- Three external Fibre Channel user ports to connect to external Fibre Channel devices

The Brocade 20-Port 8 Gb SAN Switch Module for IBM BladeCenter is a full fabric module and a Fibre Channel component that has expanded functionality. The Brocade 20-Port 8 Gb SAN Switch Module for IBM BladeCenter provides a higher speed switch for IBM BladeCenter system configurations and offers scalability in external storage area network (SAN) size and complexity, and enhanced system-management capabilities.

The Brocade 20-Port 8 Gb SAN Switch Module for IBM BladeCenter has the following ports:

- 14 internal ports to connect to the blade-server bays in the BladeCenter unit
- Six external Fibre Channel user ports to connect to external Fibre Channel devices

The Brocade 20-port switch module enables use of all 14 internal and six external ports. The Brocade 10-port switch module enables use of seven internal and three external ports. You can upgrade the Brocade 10-port switch module by purchasing an optional license key that provides 20-port capability.

**Notes:**

- For additional information about the ports, see Chapter 3, “Information panel LEDs and external Fibre Channel ports,” on page 27.
- For additional information about the available optional software features and product upgrades, see Chapter 6, “Optional features of the Brocade SAN switch modules,” on page 47.

You can manage and configure the I/O module through multiple interfaces.

- A Telnet connection to the embedded command-line interface (CLI)  
For additional information, see Chapter 4, “Configuring the I/O module through a Telnet interface,” on page 35.
- A Web browser (Web Tools) interface  
For additional information, see Chapter 5, “Configuring the I/O module through the Web Tools interface,” on page 41.

For installation details, see Chapter 2, “Installing, removing, replacing, and enabling an I/O module,” on page 15. For details about the status of the I/O module and its external ports and network connections, see Chapter 3, “Information panel LEDs and external Fibre Channel ports,” on page 27. For additional information about I/O modules and other BladeCenter components, see the BladeCenter documentation that comes with these devices.

To support each I/O module that you install in the BladeCenter unit, you must also install a compatible expansion card in each blade server that you want to communicate with the I/O module. In this environment, the expansion card operates as a host bus adapter (HBA). For additional information, see “Expansion card requirements” on page 16.

The following types of optional devices are compatible with the Brocade 8 Gb I/O modules:

- 8 Gb Fibre Channel expansion cards
- Combo Ethernet and 8 Gb Fibre Channel expansion cards
- Brocade 8 Gb SFP+ Short Wave Optical Transceiver for IBM BladeCenter, also known as an 8 Gb small form-factor pluggable plus (SFP+) module

You can obtain up-to-date information about the Brocade 8 Gb I/O modules and other IBM products at <http://www.ibm.com/systems/support/>.

At <http://www.ibm.com/support/mysupport/>, you can create a personalized support page by identifying IBM products that are of interest to you. From this personalized page, you can subscribe to weekly e-mail notifications about new technical documents, search for information and downloads, and access various administrative services.

If firmware and documentation updates are available, you can download them from the IBM Web site. To check for updates, complete the following steps.

1. Go to <http://www.ibm.com/systems/support/>.
2. Under **Product support**, click **BladeCenter**.
3. Under **Popular links**, click **Software and device drivers** for firmware updates, or click **Publications lookup** for documentation updates.

#### Notes:

- Changes are made periodically to the IBM Web site. Procedures for locating firmware and documentation might vary slightly from what is described in this document.
- Contact your IBM marketing representative or authorized reseller for information about the types of compatible BladeCenter units, blade servers, expansion cards, and optional compatible devices for the I/O modules, BladeCenter units, and blade servers.
- See <http://www.ibm.com/servers/eserver/serverproven/compat/us/> for a list of supported BladeCenter units, blade servers, expansion cards, and optional compatible devices for the I/O modules, BladeCenter units, and blade servers.
- For details about installation, configuration, and use of compatible devices, see the documentation that comes with these devices.
- This document might contain references or links to other companies' Web sites, also known as *non-IBM Web sites*. As of the date of this document, the addresses of non-IBM Web sites are correct. However, these addresses might be updated after this document has been published. Certain conditions apply to the use of non-IBM Web sites. For additional information, see Appendix D, “Notices,” on page 79.
- When you are using a Brocade 8 Gb I/O module that has been installed in I/O-module bay 3 or 4 in a BladeCenter HT unit that contains a BladeCenter Advanced Management Module whose firmware code has been upgraded to the latest version, the internal ports operate at 4 Gbps, and the external ports operate at up to 8 Gbps.

- You can install up to four I/O modules in a BladeCenter unit. For additional information, see Chapter 2, “Installing, removing, replacing, and enabling an I/O module,” on page 15.
- Brocade small form-factor pluggable plus (SFP+) modules are the only SFP+ modules that are supported by this switch module.
- You can find detailed hardware and software information, including documentation, about IBM products at <http://publib.boulder.ibm.com/infocenter/systems/index.jsp>.
- You can find detailed hardware and software information, including documentation, about BladeCenter devices at <http://publib.boulder.ibm.com/infocenter/systems/scope/blades/index.jsp> or <http://publib.boulder.ibm.com/infocenter/systems/scope/bladecenter/index.jsp>.

Record information about the I/O module in Table 1. You can find this information on the labels on the I/O module. For an illustration that shows the locations of these labels, see “Major components of the I/O module” on page 14. You will need this information when you register the I/O module with IBM. You can register the I/O module at <http://www.ibm.com/support/mysupport/>. The product name and serial number are required for registration. Depending on the type of product, additional information might be required for registration.

*Table 1. Product information*

<b>Product name</b>	<input type="checkbox"/> Brocade 10-Port 8 Gb SAN Switch Module for IBM BladeCenter  or  <input type="checkbox"/> Brocade 20-Port 8 Gb SAN Switch Module for IBM BladeCenter
<b>Model number</b>	_____
<b>Serial number</b>	_____
<b>Worldwide name (WWN)</b> <b>Note:</b> The worldwide name (WWN) is on the same label as the media access control (MAC) address.	_____
<b>Media access control (MAC) address 1</b>	_____
<b>Other MAC addresses</b>	_____ _____

If you participate in the IBM client reference program, you can share information about your use of technology, best practices, and innovative solutions; build a professional network; and gain visibility for your business. For more information about the IBM client reference program, see <http://www.ibm.com/ibm/clientreference/>.



---

## Inventory checklist

Make sure that the shipping carton contains the following items:

- One of the following types of Fibre Channel I/O modules:
  - Brocade 10-Port 8 Gb SAN Switch Module for IBM BladeCenter
  - Brocade 20-Port 8 Gb SAN Switch Module for IBM BladeCenter
- The *Brocade 8 Gb SAN Switch Modules for IBM BladeCenter Support CD*, which contains the following documents:
  - *Brocade 8 Gb 10-Port and 20-Port SAN Switch Modules for IBM BladeCenter Installation and User's Guide* (this document)
  - The documents listed in “Brocade documentation” on page 7
  - *End User License Agreement* (EULA)
  - *Safety Information*
- IBM *Important Notices* document

**Note:** The *End User License Agreement* (EULA) is provided on the *Brocade 8 Gb SAN Switch Modules for IBM BladeCenter Support CD* that comes with the switch module.

If any of these items are missing or damaged, contact your authorized reseller for replacement.

---

## Related documentation

This *Installation and User's Guide* contains instructions for setting up, installing, removing, configuring, and troubleshooting the I/O module. This document also contains general information about the I/O module and information about upgrading and expanding the functionality of the I/O module. This document is provided on the *Brocade 8 Gb SAN Switch Modules for IBM BladeCenter Support CD* that comes with the I/O module. Follow the instructions in this *Installation and User's Guide* after you read the IBM *Important Notices* document that comes with the I/O module.

### Notes:

- The most recent versions of this *Installation and User's Guide* and all other BladeCenter documentation are at <http://www.ibm.com/systems/support/>.
- The *Brocade 8 Gb SAN Switch Modules for IBM BladeCenter Support CD* might contain additional information. Use the subdirectories to help you find information quickly.

## IBM documentation

To complete your system installation, configuration, operation, and troubleshooting requirements, you must follow the instructions in the documentation that comes with your BladeCenter components. The following related IBM documentation comes with the expansion card, I/O module, BladeCenter unit, blade server, or other BladeCenter devices that you have purchased. This documentation contains important, useful information to help you with the setup, installation, configuration, operation, and troubleshooting processes for these devices. This documentation is available at <http://www.ibm.com/systems/support/>:

- IBM *Important Notices*

Read this document before you install the I/O module in the BladeCenter unit. This document contains the warranty information, safety information, and environmental notices that apply to all class A devices. The product-specific

documentation is provided on the *Brocade 8 Gb SAN Switch Modules for IBM BladeCenter Support CD* that comes with this product.

- *Environmental Notices and User Guide*

This document is in PDF on the *IBM Support CD*. It contains translated environmental notices.

- Expansion card *Installation and User's Guide*

Each type of expansion card has a customized *Installation and User's Guide* that contains detailed information about the expansion card, which is compatible with the Brocade 8 Gb I/O modules. These I/O modules contain connectors for the blade servers in which the expansion card is installed.

This document and other related documents are on the *Support CD* that comes with this product.

- IBM BladeCenter unit *Installation and User's Guide*

Each type of BladeCenter unit has a customized *Installation and User's Guide*.

- IBM BladeCenter blade server *Installation and User's Guide*

Each type of blade server has a customized *Installation and User's Guide*.

- IBM BladeCenter *Interoperability Guide*

This document provides instructions to install the blade server in the interconnect module. For the latest version of this document, go to <http://www.ibm.com/systems/support/> and search for "BladeCenter Interoperability Guide".

- Before you can use the BladeCenter unit or install I/O modules, blade servers, or other devices in the BladeCenter unit, you must correctly install and configure at least one compatible management module in the BladeCenter unit. To do this, follow the instructions in these documents, in accordance with the type of management module that your BladeCenter unit supports:

- *Advanced Management Module Installation Guide*
- *IBM BladeCenter Advanced Management Module Command-Line Interface Reference Guide*
- *IBM BladeCenter Advanced Management Module User's Guide*

- *Multi-Switch Interconnect Module for IBM BladeCenter Installation and User's Guide*

This document contains instructions for installing a multi-switch interconnect module (MSIM) in a BladeCenter unit. This document also contains instructions for installing an I/O module in an MSIM.

- IBM *BladeCenter SAN Solutions Guide*

This document provides user-oriented information about how the BladeCenter Fibre Channel optional devices are used to provide different SAN storage solutions for different application requirements.

- IBM *BladeCenter Fibre Channel I/O Interoperability Guide*

This document provides detailed Fibre Channel I/O-module configuration data and step-by-step configuration procedures for integrating the BladeCenter unit into other vendor switch fabrics. Each vendor configuration includes an initial integration checklist, configuration limitations, supported-I/O-module and firmware versions, specific management-application operations, and a successful-integration checklist.

- *Safety Information*

This document contains translated caution and danger statements. Each caution and danger statement that appears in the documentation has a number that you can use to locate the corresponding statement in your language in the *Safety Information* document.

- *IBM Problem Determination and Service Guide*

This document contains information to help you solve problems yourself, and it contains information for service technicians.

Depending on your BladeCenter product, additional documentation might be included on the IBM *Support* CD. In addition to the documentation in this library, be sure to review the *IBM BladeCenter Planning and Installation Guide* for your BladeCenter unit for information to help you prepare for system installation and configuration.

In addition, you might have to review the *IBM Configuration and Options Guide*, which contains information about which small form-factor pluggable plus (SFP+) module and cable are required to connect the I/O module to other network or storage devices. This document is available in both HTML and PDF from <http://www.ibm.com/servers/eserver/xseries/cog/>.

The updated BladeCenter documentation also is available from the IBM Systems Information Center. To check for updated information, complete the following steps.

1. Go to <http://publib.boulder.ibm.com/infocenter/systems/index.jsp>.
2. In the Contents pane, select **Combined IBM Systems Information**.
3. Select **Systems hardware**.
4. Select **BladeCenter information**.

For more information about documentation requirements, see “Using the documentation” on page 57.

## Brocade documentation

The following related Brocade Communications Systems, Inc. documentation is available from the *Brocade 8 Gb SAN Switch Modules for IBM BladeCenter Support* CD, and the main Brocade Communications Systems, Inc. Web site, <http://www.brocade.com/>. Additional related documentation also is available from this Web site and the Brocade Connect Web site, <http://www.brocadeconnect.com>. See these Web sites for the most recent versions of all related Brocade Communications Systems, Inc. documentation. To support the level of Brocade Fabric OS that runs on your Brocade 8 Gb I/O module, make sure that you are referencing the correct version of the following publications.

- *Fabric OS Administrator's Guide*
- *Fabric OS Command Reference Manual*
- *Fabric OS MIB Reference Manual*
- *Fabric OS Troubleshooting and Diagnostics Guide*
- *Fabric OS Message Reference Manual*
- *Fabric OS Release Notes*
- *Access Gateway Administrator's Guide*
- *Data Center Fabric Manager (DCFM) Administrator's Guide*
- *Fabric Watch Administrator's Guide*
- *Brocade Web Tools Administrator's Guide*

To obtain relevant Brocade documentation for device drivers, the Web Tools program, and other tools, go to <http://www.ibm.com/systems/support/> and enter the search term Brocade to list and access the applicable Web sites.

---

## The IBM Support CD

The IBM *Support* CD contains documentation for your BladeCenter product in Portable Document Format (PDF).

## Hardware and software requirements

You can run the IBM *Support* CD on any system that meets the hardware and software requirements. It requires a system with Adobe Acrobat Reader 3.0 (or later) or xpdf, which comes with Linux operating systems.

---

## Notices and statements in this document

The caution and danger statements in this document are also in the multilingual *Safety Information* document, which is on the IBM *Support* CD. Each statement is numbered for reference to the corresponding statement in your language in the *Safety Information* document.

The following notices and statements are used in this document:

- **Note:** These notices provide important tips, guidance, or advice.
- **Important:** These notices provide information or advice that might help you avoid inconvenient or problem situations.
- **Attention:** These notices indicate possible damage to programs, devices, or data. An attention notice is placed just before the instruction or situation in which damage might occur.
- **Caution:** These statements indicate situations that can be potentially hazardous to you. A caution statement is placed just before the description of a potentially hazardous procedure step or situation.
- **Danger:** These statements indicate situations that can be potentially lethal or extremely hazardous to you. A danger statement is placed just before the description of a potentially lethal or extremely hazardous procedure step or situation.

---

## Features, specifications, and standards

This section provides a summary of the features, specifications, and standards that apply to the I/O module.

The I/O module has the following features:

- One PPC440EPX processor that operates at 667 MHz
- One 256 Kb serial electrically erasable programmable read-only memory (SEEPROM)
- 512 MB double-data rate 2 (DDR2) synchronous dynamic random-access memory (SDRAM) with error correcting code (ECC), small-outline registered dual in-line memory module (SORDIMM) package, operating at 166 MHz
- 4 MB of Boot Flash
- 512 MB of Compact Flash Module
- One real-time clock with a 10-year battery
- Two temperature sensors
- Six external auto-sensing Fibre Channel ports that operate at a maximum of 8 Gbps (gigabits per second)
- 14 internal auto-sensing Fibre Channel ports that operate at a maximum of 8 Gbps
- Two internal full-duplex 100 Mbps Ethernet interfaces, terminated at a single media access control (MAC) address for the Ethernet network interface card (NIC)
- Power-on diagnostics and status reporting
- Standard Ethernet and Fibre Channel management information base (MIB) support
- External ports that can be configured as F\_ports (fabric ports), FL\_ports (fabric loop ports), or E\_ports (expansion ports)
- Internal ports that are configured as F\_ports at 2 Gbps, 4 Gbps, or 8 Gbps
- Frame-filtering technology that enables advanced zoning and monitoring capabilities
- Support for optional Brocade 8 Gb SFP+ modules (SFP+ short wave optical transceivers)

The following software features come with the switch module:

- Brocade Web Tools
- Brocade Advanced Zoning
- 20-port licensing (20-port version only)
- 10-port licensing (10-port version only)
- Brocade Full Fabric
- Brocade Enhanced Group Management

For information about the standard software features, see the *Brocade Fabric OS Administrator's Guide* on the IBM Support CD. For information about optional advanced software features, see Chapter 6, "Optional features of the Brocade SAN switch modules," on page 47.

Table 2 contains a summary of the specifications, standards, and protocols that apply to the I/O module.

*Table 2. I/O-module specifications, standards, and protocols*

**Fibre Channel standards and protocols:**

- **Fibre Channel standards:**
  - FC-AL-2 INCITS 332: 1999
  - FC-GS-5 ANSI INCITS 427 (includes the following):
    - FC-GS-4 ANSI INCITS 387: 2004
  - FC-IFR INCITS 1745-D, revision 1.03 (under development)
  - FC-SW-4 INCITS 418:2006 (includes the following):
    - FC-SW-3 INCITS 384: 2004
  - FC-VI INCITS 357: 2002
  - FC-TAPE INCITS TR-24: 1999
  - FC-DA INCITS TR-36: 2004 (includes the following):
    - FC-FLA INCITS TR-20: 1998
    - FC-PLDA INCITS TR-19: 1998
  - FC-MI-2 ANSI/INCITS TR-39-2005
  - FC-PI INCITS 352: 2002
  - FC-PI-2 INCITS 404: 2005
  - FC-PI-4 INCITS 1647-D, revision 7.1 (under development)
  - FC-FS-2 ANSI/INCITS 424:2006 (includes the following):
    - FC-FS INCITS 373: 2003
  - FC-LS INCITS 433: 2007
  - FC-BB-3 INCITS 414: 2006 (includes the following):
    - FC-BB-2 INCITS 372: 2003
  - FC-SB-3 INCITS 374: 2003 (replaces FC-SB ANSI X3.271: 1996; FC-SB-2 INCITS 374: 2001)
  - RFC 2625 IP and ARP Over FC
  - RFC 2837 Fabric Element MIB
  - MIB-FA INCITS TR-32: 2003
  - FCP-2 INCITS 350: 2003 (replaces FCP ANSI X3.269: 1996)
  - SNIA Storage Management Initiative Specification (SMI-S) Version 1.2 (includes the following):
    - SNIA Storage Management Initiative Specification (SMI-S) Version 1.03 ISO standard IS24775-2006. Replaces (ANSI INCITS 388: 2004)
    - SNIA Storage Management Initiative Specification (SMI-S) Version 1.1.0
    - SNIA Storage Management Initiative Specification (SMI-S) Version 1.2.0

Table 2. I/O-module specifications, standards, and protocols (continued)

<p><b>Fibre Channel standards and protocols (continued):</b></p> <ul style="list-style-type: none"> <li>• <b>Fibre Channel protocols:</b> <ul style="list-style-type: none"> <li>– Fibre Channel service classes: Class 2 and class 3</li> <li>– Operation modes: Fibre Channel class 2 and class 3, connectionless</li> <li>– Number of Fibre Channel ports: 6 external ports and 14 internal ports</li> <li>– Buffer credits: <ul style="list-style-type: none"> <li>- Internal Ports: 8 buffer credits reserved per port</li> <li>- External Ports: 8 buffer credits reserved per port. A pool of 516 unreserved buffer credits can additionally be assigned to a single external port.</li> </ul> </li> <li>– External port type: <ul style="list-style-type: none"> <li>- E_port</li> <li>- F_port</li> <li>- FL_port</li> <li>- G_port</li> <li>- N_Port (Access Gateway mode)</li> <li>- M_Port (Mirror port)</li> <li>- Self-discovery based on switch type U_port (Universal port), an optional port type</li> </ul> </li> <li>– Port characteristics: <ul style="list-style-type: none"> <li>- External ports are automatically detected and self- configuring</li> <li>- Port LEDs illuminate at startup</li> </ul> </li> <li>– Maximum number of domains per fabric is test dependent: <ul style="list-style-type: none"> <li>- Brocade mode: 56 domains, non-routed</li> <li>- Native McDATA mode: 31 domains</li> <li>- Open McDATA mode: 31 domains</li> <li>- Scalability: Up to 239 switches (theoretical maximum) depending on your configuration</li> </ul> </li> </ul> </li> </ul> <p><b>Note:</b> These values are subject to change. To obtain the latest values, check the <i>Fabric OS Release Notes on the Brocade 8 Gb SAN Switch Modules for IBM BladeCenter</i> Support CD or at <a href="http://www.brocade.com/">http://www.brocade.com/</a>.</p>
<p><b>Fibre Channel standards and protocols (continued):</b></p> <ul style="list-style-type: none"> <li>• <b>Fibre Channel protocols (continued):</b></li> <li>• Internal port speed: 2 Gbps, 4 Gbps, or 8 Gbps</li> <li>• Internal port type: <ul style="list-style-type: none"> <li>– Full fabric mode: Fabric port (F_port)</li> <li>– Support for up to 44 host NPIV logins</li> </ul> </li> <li>• Support for up to a 255 to 1 port-mapping ratio</li> <li>• Media type: Brocade 8 Gb SFP+ module <ul style="list-style-type: none"> <li>– Brocade 8 Gb SFP+ Short Wave Optical Transceiver for IBM BladeCenter, also known as an 8 Gb small form-factor pluggable plus (SFP+) module</li> </ul> </li> <li>• Fabric port speed: 2.125, 4.2506, or 8.5 Gbps</li> <li>• Maximum frame size: 2148 bytes (2112 byte payload)</li> <li>• System processor: PPC440EPX</li> <li>• Fabric latency: 700 nSec from any port to any port with no contention. Latency increases as input port speed is lower than output port speed.</li> <li>• Fabric point-to-point bandwidth: 8 Gbps maximum full duplex per port</li> <li>• 4 Gb switch fabric aggregate bandwidth: 160 Gbps at full duplex</li> <li>• 8 Gb switch fabric aggregate bandwidth: 320 Gbps at full duplex</li> <li>• Nonblocking architecture shared-memory switch to decrease latency</li> </ul>
<p><b>I/O-module maintainability:</b></p> <ul style="list-style-type: none"> <li>• Diagnosis: Power-on self-test (POST) is performed on all functional components except the Brocade SFP+ module (Brocade 8 Gb SFP+ Short Wave Optical Transceiver for IBM BladeCenter). Port operational tests include internal, external, and online tests.</li> <li>• User interface: Light-emitting diode (LED) indicators</li> </ul>

Table 2. I/O-module specifications, standards, and protocols (continued)

<p><b>Brocade Data Center Fabric Manager (DCFM):</b></p> <ul style="list-style-type: none"> <li>• Comprehensive GUI-based SAN fabric management application. Professional (free) and Enterprise versions available.</li> </ul> <p><b>Fabric management:</b></p> <ul style="list-style-type: none"> <li>• Management methods: <ul style="list-style-type: none"> <li>– Web interface through Web Tools</li> <li>– Command-line interface (CLI) through Telnet program</li> </ul> </li> <li>• Management information base (MIB)</li> <li>• Switch simple network management protocol (SNMP) agent: <p>Enables a network management workstation to receive configuration values, traffic information, and Fibre Channel failure data through SNMP and the Ethernet interface</p> </li> </ul>
<p><b>Dimensions:</b></p> <ul style="list-style-type: none"> <li>• Width: 118 mm (4.65 in.)</li> <li>• Height: 29 mm (1.14 in.)</li> <li>• Depth: 270 mm (10.63 in.)</li> <li>• Weight: Approximately 0.936 kg (2.07 lb.)</li> </ul>
<p><b>Environmental:</b></p> <ul style="list-style-type: none"> <li>• Temperature and altitude: <ul style="list-style-type: none"> <li>– Operating: <ul style="list-style-type: none"> <li>- 10°C to 52°C (50°F to 125.6°F) at an altitude of 0 to 914 m (0 to 3000 ft)</li> <li>- 10°C to 49°C (50°F to 120.2°F) at an altitude of 0 to 3000 m (0 to 10 000 ft)</li> </ul> </li> <li>– Non-operating: <ul style="list-style-type: none"> <li>-40°C to 65°C (-40°F to 149°F) at an altitude of 0 to 12 000 m (0 to 39 370 ft)</li> </ul> </li> </ul> </li> <li>• Humidity: <ul style="list-style-type: none"> <li>– Operating: 8% to 80%, noncondensing</li> <li>– Non-operating: 5% to 80%, noncondensing</li> </ul> </li> </ul>



Table 2. I/O-module specifications, standards, and protocols (continued)

**I/O-module regulatory certifications:**

- Electrical:
  - Power source loading: 4.17 amps maximum at 12 V dc
  - Operating voltage: 12 V dc
  - Circuit protection: Internally fused
- Safety standards:
  - UL 1950 and UL 60950-1 Listed Accessory Report (USA)
  - UL 1950 and Canadian Standards Association (CSA) C22.2 No. 60950-1-03 (Canada)
  - IEC 60950-1/EN 60950-1 CB Report and Certificate
  - EN60950 (EC)
  - Support for Japan
  - Support for Korea
- Emissions standards:
  - FCC Title 47 CFR Part 15 Subpart B Class A (USA)
  - VCCI Class A ITE, April 2003 (Japan)
  - ICES-003 issue 3 (Canada)
  - A4EN55022 level A (EC)
  - Voltage fluctuations: EN 61000-3-3
  - Harmonics: EN 61000-3-2
  - Immunity: EN55024: 1998
  - C-Tick - AS/NZS CISPR 22 (Australia/New Zealand)
  - CE Mark - EN55022:1998 + A2:2003 and EN55024:1998 + A1:2001 + A2:2003
  - MIC Notice No. 2001-115 and No. 2001-116 (Korea)
  - GOST 29216-91 (Russia)
  - CISPR 22 Class A
  - BSMI CNS 13438 (Taiwan)
  - Communique No. 2004/9 and No. 2004/22 (Turkey)
  - EMC.CVG, 28 October 2002 (Saudi Arabia)
  - GB 9524:1998 (China)

---

## Major components of the I/O module

Figure 1 shows the major components of the I/O module.

### Notes:

1. The illustrations in this document might differ slightly from your hardware.
2. Your I/O module might have labels that are not shown in the following illustration. For example, the worldwide name (WWN) is on the same label as the media access control (MAC) address.

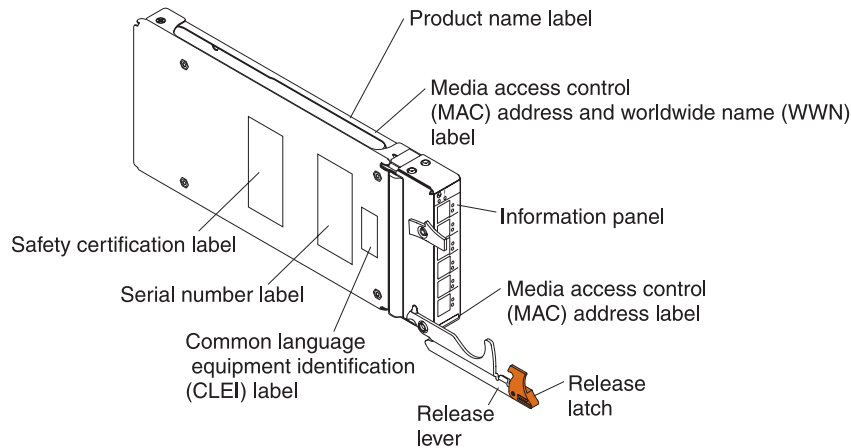


Figure 1. Major components of the I/O module

For more information about the components of the information panel, see Chapter 3, "Information panel LEDs and external Fibre Channel ports," on page 27. For more information about the MAC address, see the *Brocade Fabric OS Administrator's Guide* on the *Brocade 8 Gb SAN Switch Modules for IBM BladeCenter Support CD*.

---

## Chapter 2. Installing, removing, replacing, and enabling an I/O module

This chapter provides instructions for installing, removing, replacing, and enabling an I/O module in the BladeCenter unit.

---

### I/O module preinstallation checklist

The following items are I/O module preinstallation requirements and considerations.

- Make sure that you are using BladeCenter components that are compatible with the I/O modules, BladeCenter units, and blade servers.

For a list of the types of supported BladeCenter units, see Chapter 1, “Introduction,” on page 1. See <http://www.ibm.com/servers/eserver/serverproven/compat/us/> for a list of supported blade servers, expansion cards, and optional compatible devices. Contact your IBM marketing representative or authorized reseller for information about the types of compatible BladeCenter units, blade servers, expansion cards, and optional compatible devices for the I/O modules, BladeCenter units, and blade servers.

For details about installation, configuration, and use of compatible devices, see the documentation that comes with these devices.

- Make sure that you are using the latest version of firmware code for the BladeCenter Advanced Management Module and all other BladeCenter components.

If necessary, install the latest version of firmware code for the BladeCenter Advanced Management Module or other BladeCenter components. To download the most recent firmware updates, go to <http://www.ibm.com/systems/support/> for the latest information about upgrading the firmware code for BladeCenter components. The instructions are in the documentation that comes with the updates.

- Make sure that compatible expansion cards are installed in the blade servers or other blade devices that you want to communicate with the I/O modules. For additional information about the expansion card requirements for I/O modules, see “Expansion card requirements” on page 16.
- The BladeCenter unit supports a maximum of four I/O modules, in I/O-module bays 3, 4, 8, and 10. You can install I/O modules in the following I/O-module bay combinations:
  - You can install an I/O module in I/O-module bay 3 or 4 or in both I/O-module bays 3 and 4 of the BladeCenter unit.
  - You can install an I/O module inside a multi-switch interconnect module (MSIM) in I/O-module bay 8 or 10 or in both I/O-module bays 8 and 10 of the BladeCenter unit.
  - You can install an I/O module in I/O-module bay 3 or 4 of the BladeCenter unit, and another I/O module inside an MSIM in I/O-module bay 8 or 10 of the BladeCenter unit.
  - If you are installing only one I/O module and your expansion card does not require that your I/O module be installed in an MSIM in this system configuration, install the I/O module in I/O-module bay 3 of the BladeCenter unit.

- If you are installing only one I/O module and your expansion card requires that your I/O module be installed in an MSIM in this system configuration, install the I/O module inside the MSIM in I/O-module bay 8 of the BladeCenter unit.

For details about I/O-module bay requirements and bay locations, see the documentation for your BladeCenter unit, the blade servers, and the applicable device.

- If the I/O modules will be installed in an MSIM in I/O-module bays of the BladeCenter unit, make sure that the I/O modules are in the correct (supported) I/O-module bays, and that a supported expansion card is installed in your blade server. For additional information, see Table 3 on page 17 and the *Installation and User's Guide* that comes with the device.
- When the I/O module is installed in a BladeCenter HT unit, the internal ports operate at 4 Gbps, and the external ports operate at speeds up to 8 Gbps.
- Configuration requirements for the I/O module and the BladeCenter unit might vary. You can obtain up-to-date information about the I/O module and the BladeCenter unit at <http://www.ibm.com/systems/bladecenter/>.
- The blade servers or BladeCenter units that are described or shown in this document might be different from your blade server or BladeCenter unit. For additional information, see the documentation that comes with your blade server or BladeCenter unit.
- If you encounter a problem with using the BladeCenter components or during the I/O module installation procedure, see “Troubleshooting checklist” on page 52 for additional information.

---

## Expansion card requirements

A compatible expansion card or host bus adapter (HBA) must be installed in each blade server or other blade device that you want to communicate with the I/O module. The following devices are examples of compatible expansion cards for the I/O module:

- 8 Gb Fibre Channel expansion cards
- Combo Ethernet and 8 Gb Fibre Channel expansion cards

For additional information about these expansion cards, see the applicable *Installation and User's Guide* on the *Support CD* that comes with these products.

Expansion cards determine the BladeCenter unit I/O-module bays that can support each I/O module. The expansion card has two 2 Gbps, 4 Gbps, or 8 Gbps Fibre Channel ports. To enable the I/O module to communicate with a blade server or other blade device, at least one of the previously specified supported types of expansion card must be installed in the blade server. For details about installation, configuration, and use of an expansion card, see the documentation that comes with the expansion card.

If an I/O module is installed in a device, such as an MSIM, in I/O-module bays of the BladeCenter unit, this configuration requires a specific type of expansion card to support the device and to communicate with a blade server or other blade device. The expansion card must be installed in the blade server or other blade device. For additional information, including the applicable I/O-module bays and expansion-card ports, see the documentation that comes with the expansion card and the device in which the I/O module is installed.

Table 3 summarizes the bay and port interconnections for each I/O module and expansion card. In this table, the bay numbers correspond to the I/O-module bays in the BladeCenter unit. Installing a second I/O module enables a redundant path and a separate Fibre Channel connection from the blade server or other blade device to the external devices on the Fibre Channel network and SAN. Thus, the second I/O-module port connection in Table 3 allows for dual paths from the blade server or other blade device to the external Fibre Channel devices.

Installing a second I/O module in the BladeCenter unit provides a backup I/O module in case one I/O module fails. Both I/O modules must be of the same type if I/O modules are installed in both I/O-module bays 3 and 4 of the BladeCenter unit or inside an MSIM in both I/O-module bays 8 and 10 of the BladeCenter unit.

*Table 3. I/O-module bay/expansion-card port correlation*

<b>Standard I/O-module bay in BladeCenter unit</b>	<b>Fibre Channel I/O-module function</b>
3	Port 0 connection on the Fibre Channel expansion card in the BladeCenter unit
4	Port 1 connection on the Fibre Channel expansion card in the BladeCenter unit
8 – Inside an MSIM in the BladeCenter H or BladeCenter HT unit (in the slots on the right side of the MSIM)	Port 0 connection on the Fibre Channel expansion card in the BladeCenter unit
10 – Inside an MSIM in the BladeCenter H or BladeCenter HT unit (in the slots on the right side of the MSIM)	Port 1 connection on the Fibre Channel expansion card in the BladeCenter unit
<b>Note:</b> See the most recent version of the IBM BladeCenter <i>Interoperability Guide</i> for the latest supported expansion card and I/O module configurations.	

---

## Installation guidelines

Before you install the I/O module in the BladeCenter unit, read the following information:

- Read the safety information that begins on page v, “Handling static-sensitive devices” on page 19, and the safety statements in the BladeCenter unit documentation. This information will help you work safely.
- Observe good housekeeping in the area where you are working. Place removed covers and other parts in a safe place.
- Blue on a component indicates touch points, where you can grip the component to remove it from or install it in the blade server or BladeCenter unit, open or close a latch, and so on.
- Orange on a component or an orange label on or near a component on the I/O module, blade server, or BladeCenter unit indicates that the component can be hot-swapped, which means that if the BladeCenter unit and operating system support hot-swap capability, you can remove or install the component while the BladeCenter unit is running. (Orange can also indicate touch points on hot-swap components.) See the instructions for removing or installing a specific hot-swap component for any additional procedures that you might have to perform before you remove or install the component.
- You do not have to turn off the BladeCenter unit to install or replace any of the hot-swap modules on the rear of the BladeCenter unit.
- When you install an I/O module in the BladeCenter unit, you must also install a compatible I/O expansion card in the blade server to support the I/O module.
- When you are finished working on the blade server or BladeCenter unit, reinstall all safety shields, guards, labels, and ground wires.
- For a list of supported optional devices for the BladeCenter unit and other IBM products, see <http://www.ibm.com/servers/eserver/serverproven/compat/us/>.

## System reliability guidelines

To help ensure proper cooling, performance, and system reliability, make sure that the following requirements are met:

- Each of the module bays on the rear of the BladeCenter unit contains either a module or a filler module.
- A removed hot-swap module is replaced with an identical module or filler module within 1 minute of removal.
- A removed hot-swap blade server is replaced with another blade server or filler blade within 1 minute of removal.
- The ventilation areas on the sides of the blade server are not blocked.
- You have followed the reliability guidelines in the documentation that comes with the BladeCenter unit.

Cable requirements for the I/O module are described in the IBM *Configuration and Options Guide* at <http://www.ibm.com/servers/eserver/xseries/cog/>. See the documentation that comes with the blade server for cable-routing information.

## Handling static-sensitive devices

**Attention:** Static electricity can damage the BladeCenter unit and other electronic devices. To avoid damage, keep static-sensitive devices in their static-protective packages until you are ready to install them.

To reduce the possibility of electrostatic discharge, observe the following precautions:

- Limit your movement. Movement can cause static electricity to build up around you.
- Handle the device carefully, holding it by its edges or its frame.
- Do not touch solder joints, pins, or exposed printed circuitry.
- Do not leave the device where others can handle and damage it.
- While the device is still in its static-protective package, touch it to an *unpainted* metal surface of the BladeCenter unit chassis or an *unpainted* metal surface on any other grounded rack component in the rack that you are installing the device in for at least 2 seconds. This drains static electricity from the package and from your body.
- Remove the device from its package and install it directly into the BladeCenter unit without setting down the device. If it is necessary to set down the device, put it back into its static-protective package. Do not place the device on the BladeCenter unit or on a metal surface.
- Take additional care when you handle devices during cold weather. Heating reduces indoor humidity and increases static electricity.
- Some types of BladeCenter units come with electrostatic discharge (ESD) connectors. If the BladeCenter unit is equipped with an ESD connector, see the documentation that comes with the BladeCenter unit for using the ESD connector.

---

## Installing an I/O module

To install an I/O module, complete the following steps:

1. Make sure that you are using the latest versions of device drivers, utilities, firmware code, and BIOS code for the following devices. If these items are not at the latest levels, the BladeCenter unit might not recognize one or more of the following devices, and the BladeCenter unit or these devices might not be able to start.
  - The expansion cards in the BladeCenter unit and in the blade servers
  - The blade servers
  - The advanced management module
  - The 8 Gb I/O modules and storage controller that are used by the expansion cards in the BladeCenter unit
  - Other I/O modules that are used by other expansion cards in the blade servers

If necessary, install the latest versions of device drivers, utilities, firmware code, and BIOS code for the previously listed devices.

To download the most recent device drivers, utilities, firmware updates, BIOS code updates, and expansion-card boot code updates, go to <http://www.ibm.com/systems/support/> for the latest information about upgrading the device drivers, firmware, and BIOS code for BladeCenter components. The

instructions are in the documentation that comes with the updates. Also see the *Installation and User's Guide* for your blade server for additional information.

**Notes:**

- For the latest version of the *IBM BladeCenter Advanced Management Module Command-Line Interface Reference Guide*, go to <http://www.ibm.com/systems/support/>.
  - Contact your IBM marketing representative or authorized reseller for information about the types of compatible BladeCenter units, blade servers, and optional devices for the I/O modules, BladeCenter units, and blade servers.
  - See <http://www.ibm.com/servers/eserver/serverproven/compat/us/> for a list of supported BladeCenter units, blade servers, and optional devices for the I/O modules, BladeCenter units, and blade servers.
  - For details about installation, configuration, and use of compatible devices, see the documentation that comes with these devices.
2. Read the safety information that begins on page v and "Installation guidelines" on page 18.
  3. Remove the acoustic attenuation module, if one is installed, from the BladeCenter unit.  
Depending on the type of BladeCenter unit that you are using, the acoustic attenuation module is on the front or rear of the BladeCenter unit. For more information, see the documentation that comes with the BladeCenter unit.
  4. Make sure that the BladeCenter unit is turned on, the green dc power LED on each power module is lit, and the green OK LED on the advanced management module is lit.
  5. Select one or more I/O-module bays in which to install an I/O module. For information about the supported I/O-module bays, see "I/O module preinstallation checklist" on page 15.

**Note:** If you plan to use a blade server or other blade device to communicate with an I/O module, a compatible expansion card must be installed in that blade server or blade device. For additional information about the expansion card requirements for I/O modules, see "Expansion card requirements" on page 16.

6. Remove the filler module from the selected bay. Store the filler module in a static-protective environment for future use.
7. If you have not already done so, touch the static-protective package that contains the I/O module to an *unpainted* metal surface of the BladeCenter chassis or an *unpainted* metal surface on any other grounded rack component in the rack in which you are installing the I/O module for at least 2 seconds.
8. Remove the I/O module from its static-protective package.



9. Make sure that the release latch on the I/O module is in the open position (perpendicular to the I/O module), as shown in the illustration in Figure 2.  
Depending on the type of BladeCenter unit that you are using, the installation procedure requires either a vertical or horizontal orientation for the I/O module. The following example shows a vertical orientation for installing an I/O module in the BladeCenter unit. For information about installing an I/O module in your BladeCenter unit, see the documentation that comes with the BladeCenter unit.

**Note:** For details about I/O-module bay requirements and bay locations, see the documentation for your BladeCenter unit, the blade servers, and the applicable device.

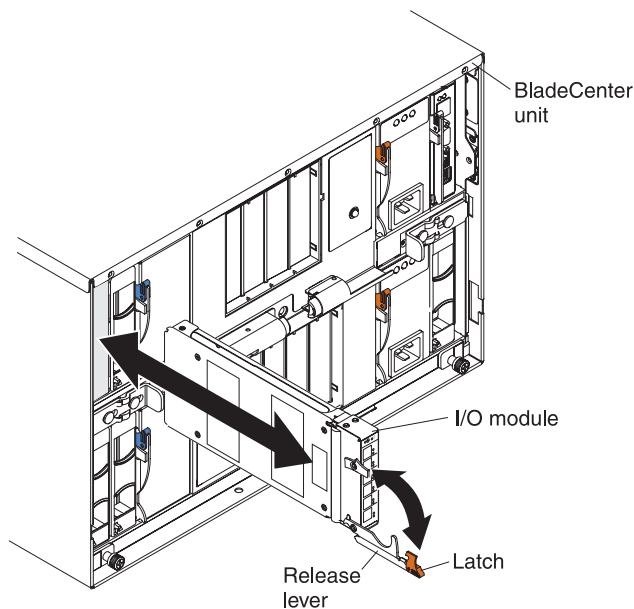


Figure 2. Installing the I/O module

10. Slide the I/O module into the applicable I/O-module bay until it stops.
11. Push the release latch on the front of the I/O module to the closed position. After you insert and lock the I/O module, it is turned on, and a power-on self-test (POST) occurs to verify that the I/O module is operating correctly.

**Notes:**

- a. The I/O module takes approximately 90 seconds to complete the POST. When the I/O module is turned on, an LED test occurs. All LEDs are lit and remain lit for approximately 5 seconds; then, all the LEDs except the green system status (OK) LED turn off. The system status (OK) LED is lit at startup and continues to flash while POST is running. Then, POST proceeds as described in the next step.
- b. If an external port on a full fabric module is disabled, the corresponding LED continues to flash synchronously until the port is enabled through the advanced management module.
- c. To maintain proper airflow, make sure that the ventilation areas on the sides of the blade server are not blocked.

12. Make sure that the LEDs on the I/O module indicate that it is operating correctly. (For LED locations, see “Information LEDs” on page 28.)
  - When the POST starts, make sure that the green system status (OK) LED on the I/O module is on or flashing during the startup process. The POST tests the condition of firmware, memory, data paths, and switch logic and uses the amber system status (!) (I/O module fault) LED on the I/O module to indicate pass or fail conditions.
  - Make sure that the green system status (OK) LED is on and the system status (!) (I/O module fault) LED on the I/O module is off, to indicate that the switch logic has successfully completed the POST.

**Note:** If the system status (!) (I/O module fault) LED on the I/O module continues to be lit, the POST has failed. Make sure that the BladeCenter unit is powered on and the BladeCenter unit LEDs are lit. If POST has failed, see the *Fabric OS Message Reference Manual* or the *Fabric OS Troubleshooting and Diagnostics Guide* for diagnostic information. You can find these documents on the *Brocade 8 Gb SAN Switch Modules for IBM BladeCenter Support* CD or at <http://www.brocade.com/>.

An amber LED on the BladeCenter unit is lit when a system error or event has occurred. To identify the error or event, check the other LEDs on the I/O module, and check the BladeCenter advanced management-module event log or the switch system log.

13. If you have a second I/O module to install, repeat step 6 on page 20 through step 12; otherwise, go to step 14.
14. If you are using the external I/O-module ports, you can connect an SFP+ module to external Fibre Channel port 0 and Fibre Channel ports 15 through 19.

**Important:** The Brocade 8 Gb SFP+ Short Wave Optical Transceiver for IBM BladeCenter, also known as an 8 Gb small form-factor pluggable plus (SFP+) module, is the only type of optional SFP+ module that is compatible with the Brocade 8 Gb I/O modules.

**Note:** An SFP+ module does not come with the I/O module but is required if you want to use external I/O-module ports.

15. Use LC-LC or LC-SC fiber-optic cables to connect the I/O-module external ports to external Fibre Channel devices.

**Note:** You can remove and replace an SFP+ module while the I/O module is operating without damaging the I/O module or the SFP+ module. However, transmission on the affected port will be interrupted until the SFP+ module and cables are installed. See the documentation that comes with the connected Fibre Channel device for information about installation, configuration, and startup sequence.

16. Replace the acoustic attenuation module, if you removed it in step 3 on page 20.

17. Enable the new I/O module and its external ports through the advanced management module, as described in “Enabling the I/O module and its external ports” on page 25.

For additional information about the advanced management module and enabling ports through the advanced management module, see the following documents at <http://www.ibm.com/systems/support/>:

- BladeCenter unit *Installation and User's Guide*
- *BladeCenter Advanced Management Module Installation Guide*
- *IBM BladeCenter Advanced Management Module User's Guide*

---

## Removing or replacing an I/O module



### CAUTION:

**If the I/O module is defective, remove it and replace it as described in this section. Then, remove the battery from the defective I/O module as described in Appendix A, “Removing the battery,” on page 55. The I/O module battery contains lithium and can explode if the battery and I/O module are not properly used, handled, or disposed of.**

**Recycle or dispose of the battery and defective I/O module as required by local ordinances or regulations. For additional information, see the *IBM Environmental Notices and User's Guide on the IBM Support CD*.**

To remove or replace an I/O module, complete the following steps:

1. Read the safety information that begins on page v and “Installation guidelines” on page 18.
2. If the BladeCenter unit has an acoustic attenuation module, remove it. See the documentation for the BladeCenter unit for instructions.
3. Disconnect the LC-LC or LC-SC cables from the two external ports on the SFP+ module. Removing these cables disrupts the network connection from the external Fibre Channel port to any connected external Fibre Channel devices.
4. Remove any SFP+ modules from the I/O-module external Fibre Channel ports.

5. Pull the release latch toward the bottom of the I/O module. The I/O module moves out of the bay approximately 0.6 cm (0.25 inch). Make sure that the release latch on the I/O module is in the open position (perpendicular to the I/O module), as shown in the illustration in Figure 3.

Depending on the type of BladeCenter unit that you are using, the removal procedure requires either a vertical or horizontal orientation for the I/O module. The following example shows a vertical orientation for removing an I/O module in the BladeCenter unit. For information about removing an I/O module in your BladeCenter unit, see the documentation that comes with the BladeCenter unit.

**Note:** For details about I/O-module bay requirements and bay locations, see the documentation for your BladeCenter unit, the blade servers, and the applicable device.

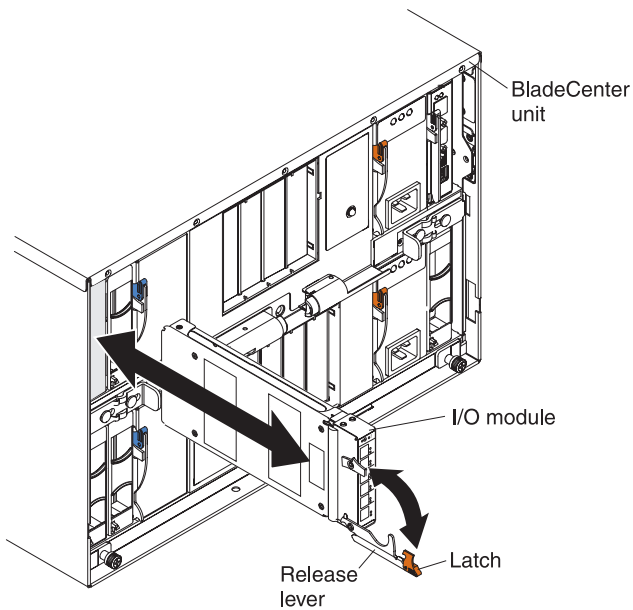


Figure 3. Removing the I/O module

6. Slide the I/O module out of the bay and set it aside.
7. Place either another I/O module or a filler module in the bay.  
**Important:** Complete this step within 1 minute (see steps 11 and 12 on page 22 for more information).
8. If you placed another I/O module into the bay and if you are using the external I/O-module ports, insert any SFP+ modules that you removed (in step 4 on page 23) into external Fibre Channel port 0 and Fibre Channel ports 15 through 19.
9. Use LC-LC or LC-SC fiber-optic cables to connect the I/O-module external ports to external Fibre Channel devices.
10. Replace the acoustic attenuation module, if you removed it in step 2 on page 23.
11. Enable the new I/O module and its external ports through the advanced management module, as described in “Enabling the I/O module and its external ports” on page 25.

For additional information about the advanced management module and enabling ports through the advanced management module, see the following documents at <http://www.ibm.com/systems/support/>:

- BladeCenter unit *Installation and User's Guide*
- *BladeCenter Advanced Management Module Installation Guide*
- *IBM BladeCenter Advanced Management Module User's Guide*

---

## Enabling the I/O module and its external ports

After you install an I/O module, you must make sure that the I/O module and its licensed external ports are enabled before you can configure the Fibre Channel fabric through the I/O module. To do this, use the "I/O Module Tasks" menu of the BladeCenter Advanced Management Module.

### Notes:

- For additional information about the advanced management module and its configuration requirements, including the requirements for enabling ports, see the following documents at <http://www.ibm.com/systems/support/>:
  - BladeCenter unit *Installation and User's Guide*
  - *BladeCenter Advanced Management Module Installation Guide*
  - *IBM BladeCenter Advanced Management Module User's Guide*
  - *IBM BladeCenter Advanced Management Module Command-Line Interface Reference Guide*
- The contents of all advanced management-module Web-interface pages vary according to the type of BladeCenter unit that you are using and the firmware versions and optional devices that are installed.
- The 14 internal I/O-module ports correspond to the connectors for the blade servers that you can attach to the BladeCenter unit.
- For the location of the six external ports, see the illustrations in Chapter 3, "Information panel LEDs and external Fibre Channel ports," on page 27.

To enable an I/O module and its licensed external ports, complete the following steps:

1. Start an advanced management-module session by using a Web browser to connect to the BladeCenter Advanced Management Module. To do this, use the Advanced Management Module Internet protocol (IP) address. The BladeCenter advanced management-module Web-interface page opens.
2. In the Advanced Management Module window, under **I/O Module Tasks** (in the left pane), click **Admin/Power/Restart**. The I/O Module Power/Restart window opens.
  - If the I/O module is not powered on, continue with step 3.
  - If the I/O module is powered on, continue with step 5 on page 26.
3. In the main window, select the I/O module that you want to turn on by selecting the check box in the first column.
4. Click **Power On Module(s)** at the bottom of the table. The I/O module is powered on, and a power-on self-test (POST) is performed. This might take several moments. At the end of the process, the following actions occur:
  - a. In the table, the power (**PWR**) status column changes to ON.
  - b. In the table, the **Power On Self Test (POST) Status** column displays: [POST results available: FF: Module completed POST successfully.] For additional POST values, see Chapter 8, "Solving problems," on page 51.
  - c. The green system status (OK) LED on the I/O module is lit. For additional information about LEDs, see Chapter 3, "Information panel LEDs and external Fibre Channel ports," on page 27.

5. In the Advanced Management Module main window, scroll down to the **I/O Module Advanced Setup** choice.
6. From the drop-down menus, select the applicable I/O module.  
**Important:** Do not skip step 7. If you skip step 7, the ports will not operate.
7. Select **Enable** for the external ports.
8. Click **Save**. The I/O module and its external ports are now fully operational, and you can configure the Fibre Channel fabric through the I/O module.

## Chapter 3. Information panel LEDs and external Fibre Channel ports

This chapter describes the information panel and LEDs on the I/O module and identifies the external Fibre Channel ports on the information panel.

**Note:** The illustrations in this document might differ slightly from your hardware.

### Information panel and internal connectors

The front panel of the I/O module contains the following components, as shown in the illustration in Figure 4.

- Information LEDs that display the status of the I/O module and its network connections. (See “Information LEDs” on page 28.)
- Six external Fibre Channel ports to connect Fibre Channel devices and switches. These ports are identified as ports 0, 15, 16, 17, 18, and 19 in the I/O-module configuration menus and are labeled 0, 15, 16, 17, 18, and 19 (from top to bottom) on the I/O module.

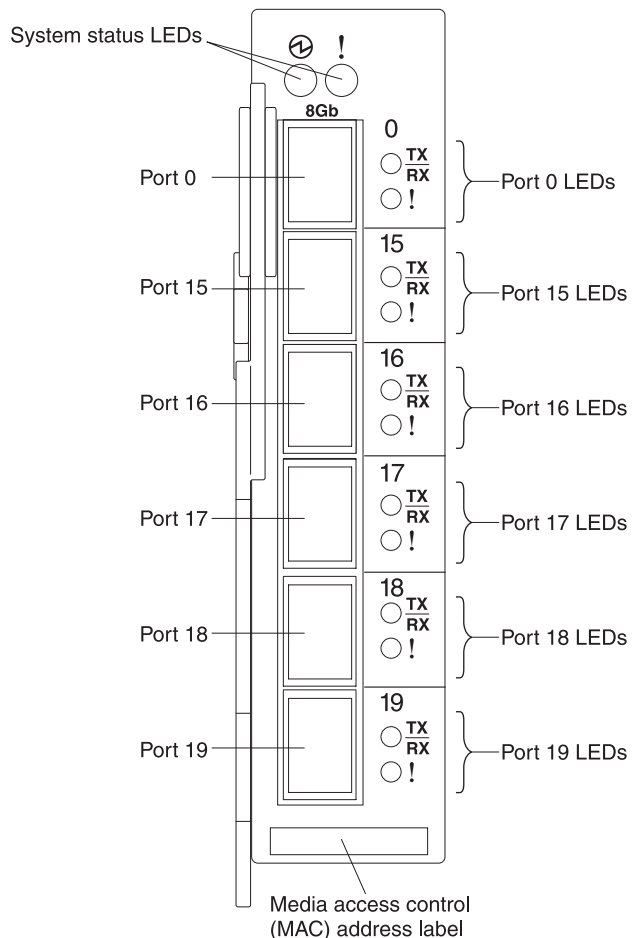


Figure 4. I/O module LEDs and ports

The internal ports are numbered 1 through 14 on the Brocade 8 Gb I/O modules.

**Notes:**

- The information panel is also known as the front panel.
- Only seven internal ports are licensed on the Brocade 10-Port 8 Gb SAN Switch Module for IBM BladeCenter.
- For the Brocade 10-port and 20-port 8 Gb SAN switch modules, the internal ports are connected to the expansion cards in blade servers in corresponding blade bays in the BladeCenter units. Some BladeCenter unit chassis have less than 14 blade bays available.

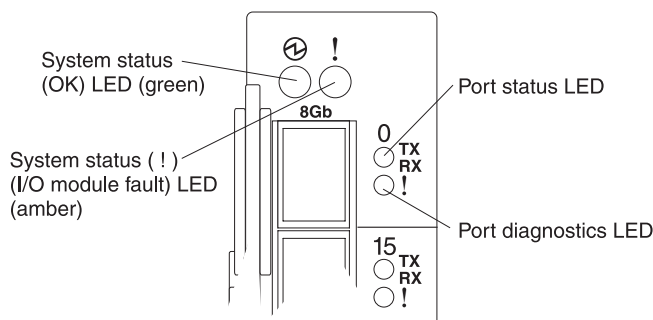
Use the Brocade management tools to view and/or modify the default internal to external logical port mapping. For additional information, see the Brocade management guide for your I/O module.

- An IBM BladeCenter H unit has 14 internal ports. All licensed internal ports are accessible.
- An IBM BladeCenter HT unit has 12 internal ports. Ports 13 and 14 are not available on the I/O module. All other licensed internal ports are accessible.

---

## Information LEDs

The front panel of the I/O module has multiple sets of LEDs. There are two LEDs on the first row of LEDs at the top of the I/O module. These LEDs indicate the I/O-module status. The system status (OK) (green) LED is below the lightning bolt symbol on the top left side. The system status (!) (I/O module fault) (amber) LED is below the ! symbol on the top right side. The remaining sets of LEDs indicate the operating conditions for each external Fibre Channel port. The two port LEDs are external port status (TX/RX), and external port diagnostics (!). The illustration in Figure 5 shows the locations of these LEDs on the I/O module.



*Figure 5. System status information LEDs and port LEDs*



#### Notes:

- An amber LED on the BladeCenter unit is lit when a system error or event has occurred. To identify the error or event, check the other LEDs on the I/O module, and check the BladeCenter advanced management-module event log or the switch system log.
- When the I/O module is turned on, an LED test occurs. All LEDs are lit and remain lit for approximately 5 seconds; then, all the LEDs except the system status (OK) LED turn off. The system status (OK) LED is lit at startup; then, POST proceeds as described in step 12 on page 22.
- Before you can use the I/O module and its external ports, you must make sure that these devices are enabled. For additional information, see “Enabling the I/O module and its external ports” on page 25.
- If an external port on a full fabric module is disabled, the corresponding LED continues to flash synchronously until the port is enabled through the advanced management module.

For additional information about the advanced management module and enabling ports through the advanced management module, see the following documents at <http://www.ibm.com/systems/support/>:

- BladeCenter unit *Installation and User's Guide*
- BladeCenter Advanced Management Module *Installation Guide*
- IBM BladeCenter Advanced Management Module *User's Guide*
- For additional information about diagnostics, see the applicable documentation at <http://www.ibm.com/systems/support/>, on the *Brocade 8 Gb SAN Switch Modules for IBM BladeCenter Support CD* or at <http://www.brocade.com/>:
  - BladeCenter *Installation and User's Guide*
  - *Problem Determination and Service Guide*
  - *Fabric OS Administrator's Guide*
  - *Fabric OS Message Reference Manual*
  - *Fabric OS Troubleshooting and Diagnostics Guide*
  - *Brocade Web Tools Administrator's Guide*
  - *Brocade 5470 Hardware Reference Manual*

## LED states and colors

After you install the I/O module in the BladeCenter unit, the I/O-module LEDs become active. There are four possible LED states: off, lit, flickering, and flashing. The lit (steady) LEDs and flashing LEDs can be green or amber. A flickering LED can only be green.

The LEDs might display any of these states and colors during startup, POST, or other diagnostic tests. This is typical and does not indicate a problem, unless the LEDs indicate a problem after all the startup (boot) processes and diagnostic tests have been completed.

Any errors that are detected during POST are written to the system log. This log is accessible through the **errshow** or **errdump** command in the switch command-line interface (CLI). For information about this command, see the following documents on the *Brocade 8 Gb SAN Switch Modules for IBM BladeCenter Support CD* or at <http://www.brocade.com/>:

- *IBM BladeCenter Advanced Management Module Command-Line Interface Reference Guide*
- *Brocade Fabric OS Administrator's Guide*

- *Brocade Web Tools Administrator's Guide*
- *Brocade Fabric OS Command Reference Manual*

For information about error messages, see the *Fabric OS Administrator's Guide* or the *Fabric OS Troubleshooting and Diagnostics Guide*. You can find these documents on the *Brocade 8 Gb SAN Switch Modules for IBM BladeCenter Support CD* or at <http://www.brocade.com/>.

**Note:** You can also use the advanced management module to make sure that the I/O module is operating correctly. For more information, see the documentation for the BladeCenter unit.

## System status LEDs

The two LEDs in the first row at the top of the I/O module represent the I/O module status. These LEDs are the green system status (OK) LED and the amber system status (!) (I/O module fault) LED. Table 4 contains a description of each system status LED on the information panel of the I/O module.

### Notes:

1. The system status (OK) LED is also known as the OK LED.
2. The system status (!) (I/O module fault) LED is also known as the system-error LED, the I/O-module fault LED, or the switch fault LED.

Table 4. I/O-module system status LED descriptions

LED name	LED description
System status (OK) (green)	<p>The system status (OK) LED is indicated by the lightning bolt symbol above it, on the top left side of the I/O module on the front panel. This LED indicates that the I/O module is on, off, or receiving power.</p> <p>This green LED is lit at startup.</p> <ul style="list-style-type: none"> <li>• When this LED is green and flashing, it indicates that POST is in progress.</li> <li>• When this LED is green and steady, it indicates that the I/O module is on and operating correctly in the BladeCenter unit.</li> </ul> <p><b>Note:</b> When this LED is lit, the following LEDs are also lit:</p> <ul style="list-style-type: none"> <li>– The green dc power LED on each power module in the BladeCenter unit</li> <li>– The green OK LED on the advanced management module</li> </ul> <ul style="list-style-type: none"> <li>• This LED turns off if a critical failure occurs during POST.</li> <li>• If both this LED and the amber I/O-module fault LED are on, the I/O module encountered a noncritical failure during POST and is running in degraded mode.</li> <li>• This LED remains lit after POST has been successfully completed.</li> <li>• When this LED is not lit and the amber I/O-module fault LED is lit, it indicates a critical failure and that the switch module is nonfunctional.</li> <li>• When this LED is not lit and the amber I/O-module fault LED is also not lit, it indicates that the I/O module is not receiving power.</li> </ul>

Table 4. I/O-module system status LED descriptions (continued)

LED name	LED description
System status (!) (I/O module fault) (amber)	<p>The system status (!) (I/O module fault) LED is indicated by the ! symbol above it, on the top right side of the I/O module on the front panel.</p> <p>This amber LED indicates that the I/O module has a fault or an error status has occurred on the I/O module. If the I/O module fails the POST, this fault LED is lit.</p> <ul style="list-style-type: none"> <li>When this LED is amber and steady, it indicates a POST failure or critical alert.</li> </ul> <p><b>Note:</b> When this LED is lit, the system-error LED on the BladeCenter unit is also lit.</p> <ul style="list-style-type: none"> <li>When the green OK LED is lit and the amber I/O-module fault LED is lit, it indicates a noncritical failure and that the switch module is running in a degraded mode.</li> <li>When the green OK LED is not lit and the amber I/O-module fault LED is lit, it indicates a critical failure and that the I/O module is nonfunctional.</li> <li>When the green OK LED is not lit and the amber I/O-module fault LED is also not lit, it indicates that the I/O module is not receiving power.</li> <li>When the green OK LED is lit and the amber I/O-module fault LED is not lit, it indicates that the I/O module is on and operating correctly in the BladeCenter unit.</li> </ul>

## Fibre Channel external port LEDs

There are two port LEDs directly to the right of each of the six Fibre Channel external ports on the front panel of the switch module. These LEDs indicate the status and diagnostics of that Fibre Channel external port.

Table 5 contains a description of each port LED on the information panel.

Table 5. I/O-module Fibre Channel external port LED descriptions

LED name	LED description
External port status (TX/RX)	<p>There are six green external port status (TX/RX) LEDs. The external port status LED is the top LED directly to the right of the corresponding external port.</p> <p>When this LED is lit, it indicates that there is a connection (or link) to a device on that port.</p>

Table 5. I/O-module Fibre Channel external port LED descriptions (continued)

LED name	LED description
External port status (TX/RX) (continued)	<p>When this LED flickers, it indicates that data is being received or transmitted (that is, activity is occurring) on that port.</p> <ul style="list-style-type: none"> <li>• This LED flashes slowly if the port is online, but segmented.</li> <li>• This LED flashes rapidly if internal loopback diagnostics are being performed.</li> <li>• When this LED is green and steady, the indicated port is online.</li> <li>• When this LED is green and flickering, the indicated port is connected and Fibre Channel activity is occurring on that port.</li> <li>• When this LED is green and flashing slowly, the indicated port is online but segmented from the connected switch or device.</li> <li>• When this LED is green and flashing rapidly, the indicated port is in the internal loopback mode because of diagnostics.</li> <li>• When this LED is not lit, it indicates that there is no signal, or the port diagnostics LED is active on the indicated port.</li> </ul>
External port diagnostics (!)	<p>There are six amber external port diagnostics (!) LEDs. The external port diagnostics LED is the bottom LED directly to the right of the corresponding external port. When an external port diagnostics LED is lit, it indicates that the external port has failed the internal, external, or online port diagnostics tests that are performed with the QuickTools interface application or CLI.</p> <ul style="list-style-type: none"> <li>• When this LED is amber and steady, the indicated port signal is present but not online.</li> <li>• When this LED is amber and flashing slowly, the indicated port has been disabled, or switch beaconing is on.</li> <li>• When this LED is amber and flashing rapidly, it indicates the port-diagnostics program has detected an error (port diagnostics).</li> <li>• When this LED is not lit, it indicates that there are no faults on the indicated port.</li> </ul>

## LED activities and diagnostic flash patterns

Table 6 contains descriptions of the activities and corresponding diagnostic flash patterns for the I/O-module LEDs.

*Table 6. I/O-module LED activities and diagnostic flash patterns*

LED name	LED activity/Diagnostic flash pattern
System status (OK)	<p>This LED is lit at startup.</p> <p>This LED flashes as the I/O module completes POST. This LED is remains lit when the I/O module is in normal operation.</p>
System status (!) (I/O module fault)	<ul style="list-style-type: none"><li>• This LED turns on immediately after the I/O module is installed; then, this LED turns off.</li><li>• The LED is off during initialization or when the I/O module is in normal operation.</li><li>• The LED is lit during LED test or to indicate a system fault during a POST failure, thermal fault, or other critical I/O module fault.</li><li>• The LED does not flash.</li></ul>
External port status (TX/RX)	<ul style="list-style-type: none"><li>• The LED is off when the corresponding external port is not logged in.</li><li>• The LED is lit when the corresponding external port is logged in and there is no external port status.</li><li>• The LED is on when the port is online.</li><li>• The LED flashes when external port status performs a normal send or receive operation.</li></ul>
External port diagnostics (!)	<p>This LED is lit when a signal is detected, but the port does not come online.</p> <ul style="list-style-type: none"><li>• This LED is off when external port diagnostics starts and is completed without error.</li><li>• This LED flashes slowly if the port is disabled.</li><li>• This LED flashes rapidly if a port fault (error) is detected.</li></ul>



---

## Chapter 4. Configuring the I/O module through a Telnet interface

The I/O module contains a Telnet server. This server enables a Telnet client to establish a Telnet session with the I/O module to retrieve information or to configure parameters through the command-line interface (CLI). You can perform a variety of fabric and switch-management tasks through an Ethernet connection by using the CLI.

You can access a Telnet interface in two ways:

- In the BladeCenter unit advanced management-module Web interface
- Through a terminal emulator program on a network-management workstation

Before you can access the I/O module through a Telnet interface, the Internet protocol (IP) address and subnet masks must be compatible with the network-management workstation, and the network-management workstation must be connected to an external BladeCenter unit advanced management-module Ethernet port.

Before you can configure the Fibre Channel fabric through the I/O module, the following configuration settings must be enabled in the advanced management module:

- External ports
- External management over all ports

To enable the configuration settings in the advanced management-module Web interface, click **I/O Module Tasks** → **Admin/Power/Restart**.

**Important:** Before you configure the I/O module, make sure that the advanced management modules in the BladeCenter unit are correctly configured. The advanced management module and the I/O module must be on the same Internet protocol (IP) subnet. The IP address of the I/O module must be set through the advanced management module. Do not use the **ipaddrset** command on the I/O module. To configure the IP address of the I/O module, use the advanced management-module Web interface. Click **I/O Module Tasks** →

**Admin/Management**. For more information, see the applicable BladeCenter *Installation and User's Guide* documents at <http://www.ibm.com/systems/support/>.

### Notes:

- Throughout this document, the advanced management-module Web-based user interface is also known as the BladeCenter advanced management-module Web interface.
- Throughout this document, the user name is also known as the login name or user ID for logging on to interfaces or programs.
- The screens that are described or referred to in this document might differ slightly from the screens that are displayed by your system. Screen content varies according to the type of BladeCenter unit and the firmware versions and options that are installed.

---

## Connecting to the I/O module

To use a Telnet interface (in VT100 compatible terminal mode) to access and control the I/O module, you must know the IP address of the I/O module and have an existing network connection. If you have to obtain the IP address for the I/O module or establish a network connection, contact your system or network administrator. Be sure to use the correct IP address in the required commands.

The IP address of the I/O module must be set through the advanced management module. Do not use the **ipaddrset** command on the I/O module. To configure the IP address of the I/O module, use the advanced management-module Web interface. Click **I/O Module Tasks** → **Admin/Management**. For more information, see the applicable *BladeCenter Installation and User's Guide* documents at <http://www.ibm.com/systems/support/>.

---

## Establishing a Telnet session through the advanced management module

To establish a Telnet session through the BladeCenter unit advanced management module, complete the following steps.

1. In your browser, in the address bar, type:

`http://xxx.xxx.xxx.xxx`

where `xxx.xxx.xxx.xxx` is the IP address of the BladeCenter unit advanced management-module interface.

**Note:** The default IP address for the BladeCenter unit advanced management module is 192.168.70.125. If a new IP address has been assigned to the advanced management module, use the new IP address instead of the default IP address.

2. Click **GO** or press Enter.

The Enter Network Password window opens.

3. At the login prompt, type the advanced management-module user name. At the password prompt, type the advanced management-module password. The user name and password are case sensitive and are the same as those that are used for advanced management-module Web access. The default advanced management-module user name is `USERID` and the default password is `PASSWORD`. (Note that the sixth character in `PASSWORD` is a zero, not the letter `O`.)

The advanced management-module Welcome window opens.

4. In the **Inactive session timeout value** field, select the timeout value for this Web session and click **Continue** or **Start Session**.

**Note:** If a user is logged in under the user name that you have entered, you will be given the option to start a new session. Clicking **Start Session** will terminate the alternate session under that user name.

The advanced management-module main window opens.

5. In the left navigation pane, under **I/O Module Tasks**, click **Configuration**.

The I/O Module Management window opens.

6. Depending on which I/O-module bay contains the installed I/O module, click the link for either I/O-module 3 or 4, or the applicable I/O-module bay (8 or 10) in a device, such as the Multi-Switch Interconnect Module (MSIM).



The BladeCenter Management window opens.

7. Make sure that the IP address is the same in the **Current IP Configuration** and **New Static IP Configuration** areas.

8. Click **Advanced Configuration**.

The BladeCenter Switch Management window opens.

9. To start a Telnet session, scroll down to the **Start Telnet/Web Session** area and click **Start Telnet Session**.

10. At the login prompt, type the advanced management-module user name. At the password prompt, type the advanced management-module password. The user name and password are case sensitive and are the same as those that are used for advanced management-module Web access. The default advanced management-module user name is USERID and the default password is PASSWORD. (Note that the sixth character in PASSWORD is a zero, not the letter O.)

The Command Line Interface Shell window opens.

To open online help to view the available commands, type `help` and press Enter.

**Note:** For more information about password requirements and using the CLI, see the applicable documentation that is listed under “CLI command format” on page 40.

Continue with “CLI command format” on page 40.

---

## Establishing a Telnet session through a terminal emulator program

You can access the I/O module through IP-enabled devices that are connected to the BladeCenter unit advanced management module. An Ethernet connection to the advanced management-module external ports on the BladeCenter unit is required. For more information, see the following documents at <http://www.ibm.com/systems/support/> :

- *Installation and User's Guide* for the BladeCenter unit
- *Advanced Management Module Installation Guide*
- *IBM BladeCenter Advanced Management Module Command-Line Interface Reference Guide*
- *IBM BladeCenter Advanced Management Module User's Guide*

To establish a Telnet session through a terminal emulator program, complete the following steps.

1. Open a command-line window on the network-management workstation.

**Note:** The IP addresses in the following step are the default IP addresses of the I/O modules. If new IP addresses have been assigned to the I/O modules, use the new IP addresses instead of the default IP addresses.

2. Type one of the following commands, depending on which I/O-module bay contains the installed I/O module.

If an I/O module is installed in I/O-module bay 3:

```
telnet 192.168.70.129
```

If an I/O module is installed in I/O-module bay 4:

```
telnet 192.168.70.130
```

If an I/O module is installed in a device, such as the Multi-Switch Interconnect Module (MSIM), in I/O-module bay 8:

```
telnet 192.168.70.134
```

If an I/O module is installed in a device, such as the Multi-Switch Interconnect Module (MSIM), in I/O-module bay 10:

```
telnet 192.168.70.136
```

3. Press Enter.

A Telnet command-prompt window opens.

4. At the login prompt, type the advanced management-module user name. At the password prompt, type the advanced management-module password. The user name and password are case sensitive and are the same as those that are used for advanced management-module Web access. The default advanced management-module user name is USERID and the default password is PASSWORD. (Note that the sixth character in PASSWORD is a zero, not the letter O.)

The Command Line Interface Shell window opens.

5. If you are accessing the I/O module for the first time, press Enter to change the switch passwords. You are prompted for a password for the root, factory, and user accounts.

The Telnet switch module login window opens.

After you have changed all of the passwords, the command prompt is displayed in the Telnet switch module login window, as shown in Figure 6 on page 39.

```

Fabric OS (brocade8Gb)
Fabos Version 6.2.0

brocade8Gb login: USERID
Password:
Please change passwords for switch default accounts now.
Use Control-C to exit or press 'Enter' key to proceed.

Warning: Access to the Root and Factory accounts may be required for
proper support of the switch. Please ensure the Root and Factory
passwords are documented in a secure location. Recovery of a lost Root
or Factory password will result in fabric downtime.

for user - root
Changing password for root
Enter new password:
Re-type new password:
passwd: all authentication tokens updated successfully
Please change passwords for switch default accounts now.
for user - factory
Changing password for factory
Enter new password:
Re-type new password:
passwd: all authentication tokens updated successfully
Please change passwords for switch default accounts now.
for user - admin
Changing password for USERID
Enter new password:
Re-type new password:
passwd: all authentication tokens updated successfully
Please change passwords for switch default accounts now.
for user - user
Changing password for user
Enter new password:
Re-type new password:
passwd: all authentication tokens updated successfully
Saving passwords to stable storage.
Passwords saved to stable storage successfully
brocade8Gb:USERID>

```

*Figure 6. Telnet switch module login window*

**Note:** For more information about password requirements and using the CLI, see the applicable documentation that is listed under “CLI command format” on page 40.

---

## CLI command format

The information in this section is an overview of the CLI command format.

For detailed information about using CLI commands, see the applicable documentation at <http://www.ibm.com/systems/support/>, on the *Brocade 8 Gb SAN Switch Modules for IBM BladeCenter Support* CD or at <http://www.brocade.com/>

- *IBM BladeCenter Advanced Management Module Command-Line Interface Reference Guide*
- *Brocade Fabric OS Administrator's Guide*
- *Brocade Fabric OS Command Reference Manual*

A command is followed by one or more keywords. The following rules apply when you type keywords:

- Commands and keywords are lowercase and case sensitive.
- Required keyword values are shown in standard font: [value]. Optional values are shown in italics *[value]*.
- The underlined portion of each keyword indicates the abbreviated form that can be used. For example, the Delete keyword can be abbreviated as Del.

The CLI command syntax is as follows:

- keyword
- keyword *[value]*
- keyword *[value] [value 2]*

You can change items in brackets ([ ]) by typing a new value. You can use the Backspace and Delete keys to erase characters behind and in front of the cursor.

---

## Chapter 5. Configuring the I/O module through the Web Tools interface

The I/O module contains a Web server interface known as Web Tools. This server enables a Web-based client to establish a Web-interface session with the I/O module to retrieve information or to configure parameters using a Web browser. You can perform a variety of fabric and switch-management tasks through an Ethernet connection using a Web browser.

You can access the advanced management-module Web interface in two ways:

- In the BladeCenter advanced management-module Web interface
- Through a Web browser on a network-management workstation

Web Tools is a graphical interface that requires a Web browser to view and manage the switch. For information about system requirements and supported Web browsers, see the following documents at <http://www.ibm.com/systems/support/>.

- *Advanced Management Module Installation Guide*
- *IBM BladeCenter Advanced Management Module Command-Line Interface Reference Guide*
- *IBM BladeCenter Advanced Management Module User's Guide*
- *Brocade Web Tool Administrator's Guide*

Before you can access the I/O module through the Web interface, the Internet protocol (IP) address and subnet masks must be compatible with the network-management workstation, and the network-management workstation must be connected to an external BladeCenter unit advanced management-module Ethernet port.

Before you can configure the Fibre Channel fabric through the I/O module, the following configuration settings must be enabled in the advanced management module:

- External ports
- External management over all ports

To enable the configuration settings in the advanced management-module Web interface, click **I/O Module Tasks** → **Admin/Power/Restart**.

**Important:** Before you configure the I/O module, make sure that the advanced management modules in the BladeCenter unit are correctly configured. The advanced management module and the I/O module must be on the same Internet protocol (IP) subnet. The IP address of the I/O module must be set through the advanced management module. Do not use the **ipaddrset** command on the I/O module. To configure the IP address of the I/O module, use the advanced management-module Web interface. Click **I/O Module Tasks** → **Admin/Management**. For more information, see the applicable BladeCenter *Installation and User's Guide* documents at <http://www.ibm.com/systems/support/>.

### Notes:

- Throughout this document, the advanced management-module Web-based user interface is also known as the BladeCenter advanced management-module Web interface.

- Throughout this document, the user name is also known as the login name or user ID for logging on to interfaces or programs.
- The screens that are described or referred to in this document might differ slightly from the screens that are displayed by your system. Screen content varies according to the type of BladeCenter unit and the firmware versions and options that are installed.

---

## Connecting to the I/O module

Before you can use the Web Tools interface to access and control the I/O module, you must know the IP address for the I/O module and have an existing network connection. If you have to obtain the IP address for the I/O module or establish a network connection, contact your system or network administrator.

The IP address of the I/O module must be set through the advanced management module. Do not use the **ipaddrset** command on the I/O module. To configure the IP address of the I/O module, use the advanced management-module Web interface. Click **I/O Module Tasks** → **Admin/Management**. For more information, see the applicable *BladeCenter Installation and User's Guide* documents at <http://www.ibm.com/systems/support/>.

---

## Establishing a Web-interface session through the advanced management module

Complete the following steps to establish a Web-interface session through the BladeCenter advanced management module:

1. In your browser, in the address bar, type:

`http://xxx.xxx.xxx.xxx`

where `xxx.xxx.xxx.xxx` is the IP address of the BladeCenter unit advanced management-module interface.

**Note:** The default IP address for the BladeCenter unit advanced management module is 192.168.70.125. If a new IP address has been assigned to the advanced management module, use the new IP address instead of the default IP address.

2. Click **GO** or press Enter.

The Enter Network Password window opens.

3. At the login prompt, type the advanced management-module user name. At the password prompt, type the advanced management-module password. The user name and password are case sensitive and are the same as those that are used for advanced management-module Web access. The default advanced management-module user name is `USERID` and the default password is `PASSWORD`. (Note that the sixth character in `PASSWORD` is a zero, not the letter `O`.)

The advanced management-module Welcome window opens.

4. In the **Inactive session timeout value** field, select the timeout value for this Web session and click **Continue** or **Start Session**.

**Note:** If a user is logged in under the user name that you have entered, you will be given the option to start a new session. Clicking **Start Session** will terminate the alternate session under that user name.

The advanced management-module main window opens.

5. In the left navigation pane, under **I/O Module Tasks**, click **Configuration**.  
The I/O Module Management window opens.
6. Depending on which I/O-module bay contains the installed I/O module, click the link for either I/O-module 3 or 4, or the applicable I/O-module bay (8 or 10) in a device, such as an MSIM.  
The BladeCenter Management window opens.
7. Make sure that the IP address is the same in the **Current IP Configuration** and **New Static IP Configuration** areas.
8. Click **Advanced Configuration**.  
The BladeCenter Switch Management window opens.
9. To start a Web-interface session, scroll down to the **Start Telnet/Web Session** section and click **Start Web Session**.  
The Web Tools interface security certificate check window opens.

**Note:** The Web Tools interface only supports single-switch management per session.

The I/O-module Web Tools interface window opens.

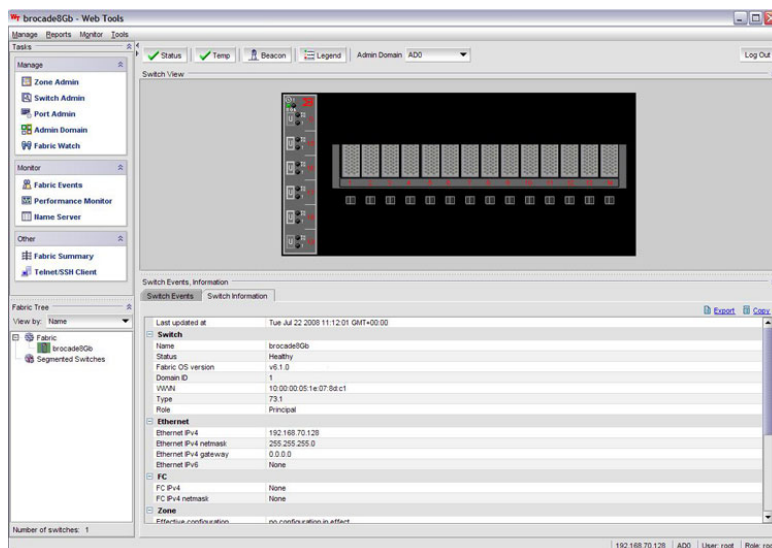


Figure 7. I/O-module Web Tools interface window – Establishing a Web-interface session through the advanced management module

10. To perform switch-module administrative tasks, click **Admin**, and log in to the switch. At the login name prompt, type the advanced management-module user name. At the password prompt, type the advanced management-module password. The login name and password are case sensitive and are the same as the user name and password that are used for advanced management-module Web access. The default advanced management-module user name is USERID and the default password is PASSW0RD. (Note that the sixth character in PASSW0RD is a zero, not the letter O.)

For more information about using the Web Tools interface and the CLI, see the applicable documentation at <http://www.ibm.com/systems/support/>, on the *Brocade 8 Gb SAN Switch Modules for IBM BladeCenter Support CD* or at <http://www.brocade.com/>:

- *IBM BladeCenter Advanced Management Module Command-Line Interface Reference Guide*
- *Brocade Web Tools Administrator's Guide*
- *Brocade Fabric OS Administrator's Guide*
- *Brocade Fabric OS Command Reference Manual*

---

## Establishing a Web-interface session through a Web browser

You can access the I/O module by IP-enabled devices that are connected to the BladeCenter advanced management module. An Ethernet connection to the advanced management-module external ports on the BladeCenter unit is required. For more information, see the following documents at <http://www.ibm.com/systems/support/>:

- BladeCenter unit *Installation and User's Guide*
- *Advanced Management Module Installation Guide*
- *IBM BladeCenter Advanced Management Module User's Guide*

Complete the following steps to establish a Web-interface session through a Web browser:

1. Open a supported Web browser on the network-management workstation.

**Note:** The IP addresses in the following step are the default IP addresses of the I/O modules. If new IP addresses have been assigned to the I/O modules, use the new IP addresses instead of the default IP addresses.

2. Type one of the following Web addresses in the address field, depending on which I/O-module bay contains the installed I/O module.

If an I/O module is installed in I/O-module bay 3:

`http://192.168.70.129`

If an I/O module is installed in I/O-module bay 4:

`http://192.168.70.130`

If an I/O module is installed in a device, such as an MSIM, in I/O-module bay 8:

`telnet 192.168.70.134`

If an I/O module is installed in a device, such as an MSIM, in I/O-module bay 10:

`telnet 192.168.70.136`

3. Press Enter.

The I/O-module Web Tools interface window opens.



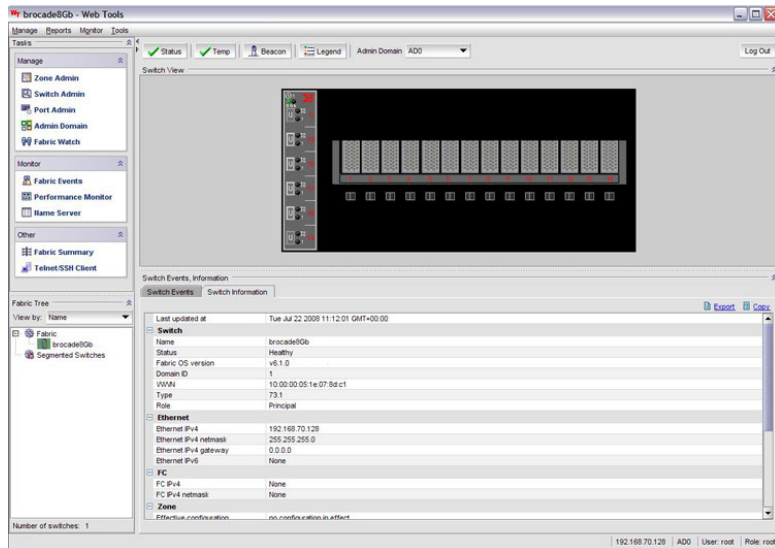


Figure 8. I/O-module Web Tools interface window – Establishing a Web-interface session through a Web browser

- To perform switch-module administrative tasks, click **Admin**, and log in to the switch. At the login name prompt, type the advanced management-module user name. At the password prompt, type the advanced management-module password. The login name and password are case sensitive and are the same as the user name and password that are used for advanced management-module Web access. The default advanced management-module user name is USERID and the default password is PASSW0RD. (Note that the sixth character in PASSW0RD is a zero, not the letter O.)

For more information about using the Web Tools interface and the CLI, see the applicable documentation at <http://www.ibm.com/systems/support/>, on the *Brocade 8 Gb SAN Switch Modules for IBM BladeCenter Support CD* or at <http://www.brocade.com/>:

- *IBM BladeCenter Advanced Management Module Command-Line Interface Reference Guide*
- *Brocade Web Tools Administrator's Guide*
- *Brocade Fabric OS Administrator's Guide*
- *Brocade Fabric OS Command Reference Manual*



## Chapter 6. Optional features of the Brocade SAN switch modules

You can upgrade and expand the functionality of the I/O module by purchasing and installing optional software features. These features require a license.

There are several types of optional software features. As of the date of this document, these features have the names that are listed in Table 7. However, the names of these features are subject to change. Except where indicated in Table 7, these features are available for both the Brocade 20-port 8 Gb version and the Brocade 10-port 8 Gb version of the I/O module. For additional information about these features, see the applicable documents that are listed in “Brocade documentation” on page 7.

Table 7. Optional features

Optional feature (IBM part number)	Description
Adaptive Networking (45W0259)	A suite of tools and capabilities to ensure optimized behavior in the SAN using deep network intelligence to detect congestion, dynamically make adjustments in the fabric, provide traffic management functions, and provide other services.
Advanced Performance Monitoring (45W0257)	<ul style="list-style-type: none"><li>• Provides advanced performance-monitoring procedures through the Brocade switch module:<ul style="list-style-type: none"><li>– End-to-end operations</li><li>– Small computer system interface (SCSI) read operations</li><li>– SCSI write operations</li><li>– SCSI read/write operations</li><li>– SCSI versus IP traffic-usage comparisons</li></ul></li><li>• Enables performance tuning of the Brocade 8 Gb SAN.</li></ul>
ISL Trunking (26K6476)	<ul style="list-style-type: none"><li>• Logically combines the external switch-module ports that can include all six of the external ports (and 15-19) into a single 48 Gb trunk (inter-switch linked) to another Brocade switch module.</li><li>• Ensures optimum performance for servers that use this trunk.</li></ul>
Performance Bundle (26K5605)	Includes both the Advanced Performance Monitoring and ISL Trunking advanced features.
Extended Fabrics (45W0256)	<p>Enables full bandwidth performance at extended distances over 10 km (6.21 miles).</p> <p>For more information about configuring this feature, see the <i>Brocade Fabric OS Administrator's Guide</i> on the IBM Support CD.</p>

Table 7. Optional features (continued)

Optional feature (IBM part number)	Description
Fabric Watch (45W0255)	Enables tracking of a wide variety of SAN fabric elements, events, and counters. Automatically sends alerts to administrator for events operating outside of customizable thresholds.
10-port Upgrade (32R1823)	Upgrades the switch module from seven internal ports and three external ports to 14 internal ports and six external ports. <b>Note:</b> This feature is available only for the Brocade 10-port 8 Gb and 4 Gb I/O modules.

For information about these features, see the following documentation on the switch module *Support CD*:

- *Fabric OS Administrator's Guide*
- *Fabric OS Command Reference Manual*
- *Fabric OS MIB Reference Manual*
- *Fabric OS Message Reference Manual*
- *Fabric Watch Administrator's Guide*
- *Brocade Web Tools Administrator's Guide*

To activate and use these optional software features, you must purchase the corresponding license keys. To purchase and obtain a license key for an optional feature, go to <http://www.ibm.com/> or call IBM. In the U.S. and Canada, call 1-800-IBM-SERV (1-800-426-7378). For all other countries, see <http://www.ibm.com/planetwide/> for support telephone numbers. A license key will be provided through the Web site that is described in the documentation that you receive after you purchase the feature.

Before you can upgrade and install a new license key, you must determine the license identifier (ID) of the switch module. Use the Telnet program to log in to the switch module as described in Chapter 4, "Configuring the I/O module through a Telnet interface," on page 35, and run the **licenseidshow** command to determine this value. Record the license ID value for future reference. For information about this command, see the *Brocade Fabric OS Command Reference Manual*.

To install an optional feature on the switch, you must add the corresponding license to the list of current features for the switch. Use the Telnet program to log in to the switch module as described in Chapter 4, "Configuring the I/O module through a Telnet interface," on page 35, and run the **licenseadd key** command, where *key* is the license key for the new feature. For information about this command, see the *Brocade Fabric OS Command Reference Manual*.

To make sure that the license has been successfully added to the switch key, run the **licenseshow** command. For information about this command, see the *Brocade Fabric OS Command Reference Manual*.

## Chapter 7. Parts listing

Replaceable components are of three types:

- **Tier 1 customer replaceable unit (CRU):** Replacement of Tier 1 CRUs is your responsibility. If IBM installs a Tier 1 CRU at your request, you will be charged for the installation.
- **Tier 2 customer replaceable unit (CRU):** You may install a Tier 2 CRU yourself or request IBM to install it, at no additional charge, under the type of warranty service that is designated for your server.
- **Field replaceable unit (FRU):** FRUs must be installed only by trained service technicians.

For information about the terms of the warranty, see Appendix C, “Warranty,” on page 59.

The replaceable components in Table 8 are Tier 1 CRUs.

*Table 8. Replaceable components and corresponding CRU/FRU identifiers*

Name of component	CRU/FRU identifier
Brocade 20-Port 8 Gb SAN Switch Module for IBM BladeCenter	<ul style="list-style-type: none"><li>• 44X1920 (Option)</li><li>• 44X1924 (Tier 1 CRU, assembly)</li><li>• 44X1926 (FRU)</li></ul>
Brocade 10-Port 8 Gb SAN Switch Module for IBM BladeCenter	<ul style="list-style-type: none"><li>• 44X1921 (Option)</li><li>• 44X1925 (Tier 1 CRU, assembly)</li><li>• 44X1927 (FRU)</li></ul>
I/O module filler, single high	31R3303 (Tier 1 CRU)
Brocade 8 Gb SFP+ Short Wave Optical Transceiver for IBM BladeCenter	<ul style="list-style-type: none"><li>• 44X1962 (Option)</li><li>• 44X1970 (Tier 1 CRU, assembly)</li><li>• 44X1974 (FRU)</li></ul>

If other BladeCenter components require replacement, see the following documentation that comes with these devices:

- *BladeCenter Problem Determination and Service Guide or Hardware Maintenance Manual and Troubleshooting Guide*
- *Installation and User's Guide or Installation Guide*

### Notes:

1. The latest versions of these documents are at <http://www.ibm.com/systems/support/>.
2. Cable requirements for the I/O module are described in the *IBM Configuration and Options Guide* at <http://www.ibm.com/servers/eserver/xseries/cog/>. See the documentation that comes with the blade server for cable-routing information.



---

## Chapter 8. Solving problems

This chapter provides basic troubleshooting information to help you solve some problems that might occur while you are setting up the I/O module. For more detailed information about troubleshooting the I/O module, see the following documents on the *Support CD* or at <http://www.brocade.com/>:

- BladeCenter unit, blade server, or I/O module *Installation and User's Guide*
- Blade server *Problem Determination and Service Guide*
- Blade server *Hardware Maintenance Manual and Troubleshooting Guide*
- *Fabric OS Administrator's Guide*
- *Fabric OS Troubleshooting and Diagnostics Guide*
- *Brocade Web Tools Administrator's Guide*

If you cannot locate and correct a problem by using the information in this section, see Appendix B, "Getting help and technical assistance," on page 57.

---

### Running POST

To ensure that it is fully operational, the I/O module processes a series of tests during power-up or a restart (power-on self-test, or POST). These tests take approximately 90 seconds to complete. The advanced management module reads the test results and displays them for you. The green OK LED is lit at startup; then, POST proceeds and continues until all of the required tests are completed. If the I/O module fails POST, the amber system status (!) (I/O-module fault) LED on the I/O module is lit and the system-error LED on the BladeCenter unit is lit. An event is stored in the event log in the system status panel of the advanced management module. The specific failure is displayed on the system status I/O module panel of the advanced management module.

**Note:** For the locations and descriptions of the I/O module LEDs, see Chapter 3, "Information panel LEDs and external Fibre Channel ports," on page 27.

---

### POST errors

There are two types of errors: noncritical and critical. A noncritical error applies to one port, and the I/O module is operational. You can continue to operate the I/O module; however, you must replace it as soon as possible. When critical errors occur, the I/O module does not operate. To view POST results, complete the following steps:

1. Log on to the advanced management module as described in the *IBM BladeCenter Advanced Management Module Command-Line Interface Reference Guide*. If necessary, obtain the IP address of the advanced management module from your system administrator. The login window opens.

**Note:** For the latest version of the *IBM BladeCenter Advanced Management Module Command-Line Interface Reference Guide*, go to <http://www.ibm.com/systems/support/>

2. After POST is completed, the advanced management module displays the results. Refresh the window to view the POST results. If a critical error occurs, replace the I/O module. If a noncritical error occurs, see the I/O-module error log for additional details.

Table 9 describes the basic critical and noncritical failures. This abbreviated list is representative; it is not an exhaustive list. An error code is associated with each failure. Error codes are displayed on the Advanced Management Module Switch Information window. Be sure to note the applicable error code and corresponding failure. You might have to provide this information when you call for service. For details, see Appendix B, “Getting help and technical assistance,” on page 57.

*Table 9. Abbreviated list of error codes for I/O-module critical and noncritical failures*

Diagnostic indicator (in hex)	Failing functional area	Failure criticality
00 - 7F	Base internal functions	Critical
80 - 9F	Internal interface failures	Noncritical
A0 - AF	External interface errors	Noncritical
B0 - FE	Reserved	Noncritical
FF	I/O module “good” indicator	Operation

---

## Troubleshooting checklist

To reduce problems during system installation, configuration, and operation, observe the following guidelines:

- Make sure that the BladeCenter unit supports the 8 Gb I/O modules and the types of blade servers that support the expansion cards.

**Notes:**

- Contact your IBM marketing representative or authorized reseller for information about the types of compatible BladeCenter units, blade servers, and optional devices for the I/O modules, BladeCenter units, and blade servers.
- See <http://www.ibm.com/servers/eserver/serverproven/compat/us/> for a list of supported BladeCenter units, blade servers, and optional devices for the I/O modules, BladeCenter units, and blade servers.
- For details about installation, configuration, and use of compatible devices, see the documentation that comes with these devices.
- Before you install an expansion card in a blade server, make sure that you are using a blade server that supports the expansion card.

**Note:** If the expansion card is installed in a supported BladeCenter blade server, see the documentation that comes with the blade server for information about displaying attached Fibre Channel devices.

- Make sure that the 8 Gb I/O modules are compatible with the target expansion cards that you want to communicate with the 8 Gb I/O modules. Where applicable, the 8 Gb I/O modules in the BladeCenter unit must support the target expansion cards in the blade server.
- Make sure that the other I/O modules are compatible with the target expansion cards that you want to communicate with these I/O modules. Where applicable, certain other I/O modules in the BladeCenter unit must support the target expansion cards in the blade server.
- Make sure that the 8 Gb I/O modules and all other I/O modules are correctly installed in the supported I/O-module bays of the BladeCenter unit. For detailed instructions and additional information about installing I/O modules into the BladeCenter unit, see your BladeCenter documentation and Chapter 2, “Installing, removing, replacing, and enabling an I/O module,” on page 15.



- Make sure that all expansion cards are installed correctly in a supported blade server. For instructions and additional information, see the *Installation and User's Guide* that comes with the blade server and the documentation that comes with the expansion cards.
- Make sure that the blade server is correctly installed in the BladeCenter unit. For instructions and additional information, see the *Installation and User's Guide* that comes with the blade server and the *Installation and User's Guide* that comes with the BladeCenter unit.
- Make sure that you are using the latest versions of device drivers, utilities, firmware code, and BIOS code for the following devices. If these items are not at the latest levels, the BladeCenter unit might not recognize one or more of the following devices, and the BladeCenter unit or these devices might not be able to start.
  - The expansion cards in the BladeCenter unit and in the blade servers
  - The blade servers
  - The advanced management module
  - The 8 Gb I/O modules and controller that are used by the expansion card in the BladeCenter unit
  - Other I/O modules that are used by other expansion cards in the blade servers

If necessary, install the latest versions of device drivers, utilities, firmware code, and BIOS code for these devices.

To download the most recent device drivers, utilities, firmware updates, BIOS code updates, and expansion-card boot code updates, go to <http://www.ibm.com/systems/support/> for the latest information about upgrading the device drivers, firmware, and BIOS code for BladeCenter components. The instructions are in the documentation that comes with the updates. Also see the *Installation and User's Guide* for your blade server for additional information.

**Note:** For the latest version of the *IBM BladeCenter Advanced Management Module Command-Line Interface Reference Guide*, go to <http://www.ibm.com/systems/support/>.

- Make sure that the BladeCenter unit, blade server, and all other BladeCenter components are correctly configured. Also determine whether the system board in the blade server requires a special configuration.

When you are using a Telnet interface to configure the I/O module, be sure to configure your I/O module with the correct date and time information.

For additional information about configuration requirements, see the documentation that comes with your BladeCenter unit, blade server, and other BladeCenter components.

- Make sure that all parameters, internal devices, and external devices have been enabled, where required. These devices include the I/O module and its external ports (see "Enabling the I/O module and its external ports" on page 25).

For additional information, see the documentation that comes with the advanced management module and the applicable utility programs and devices.

- Make sure that all peripheral devices are correctly connected to the I/O modules, turned on, and operating correctly.

**Note:** For additional information, see the documentation that comes with the peripheral devices.



---

## Appendix A. Removing the battery

This appendix contains instructions for removing the battery from an I/O module in the BladeCenter unit.

The I/O module contains a battery that is not a field replaceable or customer replaceable component. However, when the I/O module is no longer needed, remove the battery from the I/O module and recycle or properly dispose of both the I/O module and battery according to applicable local and national ordinances or regulations.



### CAUTION:

**If the I/O module is defective, remove it and replace it as described in “Removing or replacing an I/O module” on page 23. Read and observe the precautions for handling batteries in Safety Statement 2 on page viii. Then, remove the battery from the defective I/O module as described in this section. The I/O module battery contains lithium and can explode if the battery and I/O module are not properly used, handled, or disposed of.**

To remove the battery from the I/O module, complete the following steps:

1. Read the safety information that begins on page v and “Installation guidelines” on page 18.
2. If you have not already done so, remove the I/O module from the BladeCenter unit (see “Removing or replacing an I/O module” on page 23).
3. Remove the screws at the back of the I/O module that attach the switch cover to the switch base.
4. Remove the screws that attach the upper circuit board to the switch base.
5. Locate the rectangular battery on the underside of the upper circuit board.
6. Remove the battery from the connector by inserting your fingertip under the battery and lifting the battery out of the connector. (If necessary, use a small flat-tip screwdriver to loosen the battery.)
7. Recycle or dispose of the battery and other I/O module components as required by local ordinances or regulations. For additional information, see the *IBM Environmental Notices and User's Guide* on the IBM Support CD.



---

## Appendix B. Getting help and technical assistance

If you need help, service, or technical assistance or just want more information about IBM products, you will find a wide variety of sources available from IBM to assist you. This section contains information about where to go for additional information about IBM and IBM products, what to do if you experience a problem with your system, and whom to call for service, if it is necessary.

---

### Before you call

Before you call, make sure that you have taken these steps to try to solve the problem yourself:

- Check all cables to make sure that they are connected.
- Check the power switches to make sure that the system and any optional devices are turned on.
- Use the troubleshooting information in your system documentation, and use the diagnostic tools that come with your system. Information about diagnostic tools is in the *Problem Determination and Service Guide* on the IBM Documentation CD that comes with your system.
- Go to the IBM support Web site at <http://www.ibm.com/systems/support/> to check for technical information, hints, tips, and new device drivers or to submit a request for information.

You can solve many problems without outside assistance by following the troubleshooting procedures that IBM provides in the online help or in the documentation that is provided with your IBM product. The documentation that comes with IBM systems also describes the diagnostic tests that you can perform. Most systems, operating systems, and programs come with documentation that contains troubleshooting procedures and explanations of error messages and error codes. If you suspect a software problem, see the documentation for the operating system or program.

---

### Using the documentation

Information about your IBM system and preinstalled software, if any, or optional device is available in the documentation that comes with the product. That documentation can include printed documents, online documents, readme files, and help files. See the troubleshooting information in your system documentation for instructions for using the diagnostic programs. The troubleshooting information or the diagnostic programs might tell you that you need additional or updated device drivers or other software. IBM maintains pages on the World Wide Web where you can get the latest technical information and download device drivers and updates. To access these pages, go to <http://www.ibm.com/systems/support/> and follow the instructions. Also, some documents are available through the IBM Publications Center at <http://www.ibm.com/shop/publications/order/>.

---

### Getting help and information from the World Wide Web

On the World Wide Web, the IBM Web site has up-to-date information about IBM systems, optional devices, services, and support. The address for IBM System x<sup>®</sup> and xSeries<sup>®</sup> information is <http://www.ibm.com/systems/x/>. The address for IBM BladeCenter information is <http://www.ibm.com/systems/bladecenter/>. The address for IBM IntelliStation<sup>®</sup> information is <http://www.ibm.com/intellistation/>.

You can find service information for IBM systems and optional devices at <http://www.ibm.com/systems/support/>.

---

## Software service and support

Through IBM Support Line, you can get telephone assistance, for a fee, with usage, configuration, and software problems with System x and xSeries servers, BladeCenter products, IntelliStation workstations, and appliances. For information about which products are supported by Support Line in your country or region, see <http://www.ibm.com/services/sl/products/>.

For more information about Support Line and other IBM services, see <http://www.ibm.com/services/>, or see <http://www.ibm.com/planetwide/> for support telephone numbers. In the U.S. and Canada, call 1-800-IBM-SERV (1-800-426-7378).

---

## Hardware service and support

You can receive hardware service through your IBM reseller or IBM Services. To locate a reseller authorized by IBM to provide warranty service, go to <http://www.ibm.com/partnerworld/> and click **Find a Business Partner** on the right side of the page. For IBM support telephone numbers, see <http://www.ibm.com/planetwide/>. In the U.S. and Canada, call 1-800-IBM-SERV (1-800-426-7378).

In the U.S. and Canada, hardware service and support is available 24 hours a day, 7 days a week. In the U.K., these services are available Monday through Friday, from 9 a.m. to 6 p.m.

---

## IBM Taiwan product service

台灣 IBM 產品服務聯絡方式：  
台灣國際商業機器股份有限公司  
台北市松仁路 7 號 3 樓  
電話：0800-016-888

IBM Taiwan product service contact information:

IBM Taiwan Corporation  
3F, No 7, Song Ren Rd.  
Taipei, Taiwan  
Telephone: 0800-016-888

---

## Appendix C. Warranty

IBM provides hardware warranty service for this product equivalent to that described in the IBM Statement of Limited Warranty ("SOLW"), a copy of which is included, notwithstanding the section entitled, "What this Warranty Does not Cover" of the SOLW. All references to "Machine" in the SOLW apply to this product (except for its firmware or accompanying software) for purposes of the warranty. References to "IBM's Official Published Specifications" mean the specifications for the product designated by IBM. Any firmware or software included in or which accompanies this product is subject to the terms and conditions of the manufacturer's end user license agreement.

---

### IBM Statement of Limited Warranty Z125-4753-10 08/2008

#### Part 1 - General Terms

This Statement of Limited Warranty includes Part 1 - General Terms, Part 2 - Country-unique Terms, and Part 3 - Warranty Information. The terms of Part 2 replace or modify those of Part 1. For purposes of this Statement of Limited Warranty, "IBM" means the IBM entity that provided your Machine to you or to your reseller—for example, International Business Machines Corporation in the U.S. or IBM World Trade Corporation or the local IBM entity in your country.

The warranties provided by IBM in this Statement of Limited Warranty apply only to Machines you purchase for your use, and not for resale. The term "Machine" means an IBM machine, its features, conversions, upgrades, elements, or accessories, or any combination of them. The term "Machine" does not include any software programs, whether pre-loaded with the Machine, installed subsequently, or otherwise. **NOTHING IN THIS STATEMENT OF LIMITED WARRANTY AFFECTS ANY STATUTORY RIGHTS OF CONSUMERS THAT CANNOT BE WAIVED OR LIMITED BY CONTRACT.**

This Statement of Limited Warranty is available, in multiple languages, at the following IBM Internet website: [http://www.ibm.com/systems/support/machine\\_warranties/](http://www.ibm.com/systems/support/machine_warranties/).

#### What this Warranty Covers

IBM warrants that each Machine is free from defects in materials and workmanship and conforms to its Specifications. "Specifications" is information specific to a Machine in a document entitled "Official Published Specifications", which is available upon request.

During the warranty period, IBM provides repair and exchange service for the Machine under the type of warranty service IBM designates for the Machine. The warranty period for the Machine is a fixed period starting on its original Date of Installation. The date on your purchase invoice or sales receipt is the Date of Installation unless IBM or your reseller informs you otherwise. The warranty period, type of warranty, and service level that apply to your Machine are designated in Part 3.

Many features, conversions, or upgrades involve the removal of parts and their return to IBM. An IBM part that replaces a removed part will assume the warranty service status of the removed part. An IBM part that is added to a Machine without

replacing a previously-installed part is subject to warranty effective on its Date of Installation. Unless IBM specifies otherwise, the warranty period, type of warranty, and service level of such part is the same as the Machine on which it is installed.

Unless IBM specifies otherwise, these warranties apply only in the country or region in which you purchased the Machine.

**THESE WARRANTIES ARE YOUR EXCLUSIVE WARRANTIES AND REPLACE ALL OTHER WARRANTIES OR CONDITIONS, EXPRESS OR IMPLIED, INCLUDING, BUT NOT LIMITED TO, THE IMPLIED WARRANTIES OR CONDITIONS OF MERCHANTABILITY AND FITNESS FOR A PARTICULAR PURPOSE, AND ANY WARRANTY OF TITLE OR NON-INFRINGEMENT. SOME STATES OR JURISDICTIONS DO NOT ALLOW THE EXCLUSION OF EXPRESS OR IMPLIED WARRANTIES, SO THE ABOVE EXCLUSION MAY NOT APPLY TO YOU. IN THAT EVENT, SUCH WARRANTIES ARE LIMITED IN DURATION TO THE WARRANTY PERIOD. NO WARRANTIES APPLY AFTER THAT PERIOD. SOME STATES OR JURISDICTIONS DO NOT ALLOW LIMITATIONS ON HOW LONG AN IMPLIED WARRANTY LASTS, SO THE ABOVE LIMITATION MAY NOT APPLY TO YOU.**

#### **What this Warranty Does not Cover**

This warranty does not cover the following:

- a. failure or damage resulting from misuse (including, but not limited to, use of any Machine capacity or capability, other than that authorized by IBM in writing), accident, modification, unsuitable physical or operating environment, operation in other than the specified operating environment or improper maintenance by you or a third party;
- b. failure due to events beyond IBM's control;
- c. failure caused by a product for which IBM is not responsible;
- d. any non-IBM products, including those provided with, or installed on, an IBM Machine at your request;
- e. accessories, supply items and consumables (e.g. batteries and printer cartridges), and structural parts (e.g. frames and covers);
- f. service of Machine alterations; and
- g. service of a Machine on which you are using capacity or capability, other than that authorized by IBM in writing.

The warranty is voided by removal or alteration of identification labels on the Machine or its parts.

IBM does not warrant uninterrupted or error-free operation of a Machine.

Any technical or other support provided for a Machine under warranty, such as assistance with “how-to” questions and those regarding Machine set-up and installation, is provided **WITHOUT WARRANTIES OF ANY KIND**.

#### **How to Obtain Warranty Service**

If the Machine does not function as warranted during the warranty period, refer to the service documentation that shipped with your Machine for support assistance



and problem determination procedures. A copy of the service documentation for your Machine can also be found at the following IBM website: <http://www.ibm.com> under "Support and downloads".

If you are unable to resolve your problem with the service documentation, contact IBM or your reseller to obtain warranty service. Contact information for IBM is provided in Part 3. If you do not register the Machine with IBM, you may be required to present proof of purchase as evidence of your entitlement to warranty service.

### **What IBM Will Do to Correct Problems**

IBM will attempt to diagnose and resolve your problem over the telephone or electronically by access to an IBM Internet website. Certain Machines contain remote support capabilities for direct problem reporting, remote problem determination, and resolution with IBM. When you contact IBM for service, you must follow the problem determination and resolution procedures that IBM specifies. Following problem determination, if IBM determines on-site service is required, a service technician will be scheduled for service at your location.

You are responsible for downloading or obtaining from IBM, and installing designated Machine Code (microcode, basic input/output system code (called "BIOS"), utility programs, device drivers, and diagnostics delivered with an IBM Machine) and other software updates in a timely manner from an IBM Internet website or from other electronic media, and following the instructions that IBM provides. You may request IBM to install Machine Code changes, however, you may be charged for that service.

Some parts of IBM Machines are designated as Customer Replaceable Units ("CRUs"). If your problem can be resolved with a CRU (e.g. keyboard, memory, hard disk drive), IBM will ship the CRU to you for you to install.

If the Machine does not function as warranted during the warranty period and your problem cannot be resolved over the telephone or electronically, through your application of Machine Code or software updates, or with a CRU, IBM or its subcontractor or a reseller that has been approved by IBM to provide warranty service, will either, at its discretion, 1) repair it to make it function as warranted, or 2) replace it with one that is at least functionally equivalent. If IBM or its subcontractor or the reseller is unable to do either, you may return the Machine to your place of purchase and your money will be refunded.

IBM or its subcontractor or the reseller will also manage and install selected engineering changes that apply to the Machine.

### **Exchange of a Machine or Part**

When the warranty service involves the exchange of a Machine or part, the item IBM or its subcontractor or the reseller replaces becomes IBM's property, and the replacement becomes yours. You represent that all removed items are genuine and unaltered. The replacement may not be new, but will be in good working order and at least functionally equivalent to the item replaced. The replacement assumes the warranty service status of the replaced item.

### **Your Additional Responsibilities**

You agree:

- a. before IBM or its subcontractor or the reseller exchanges a Machine or part, to remove all features, parts, options, alterations, and attachments not under warranty service and ensure that the Machine is free of any legal obligations or restrictions that prevent its exchange;
- b. to obtain authorization from the owner to have IBM or its subcontractor or the reseller service a Machine that you do not own;
- c. where applicable, before service is provided:
  1. follow the service request procedures that IBM or its subcontractor or its reseller provides;
  2. backup and secure all programs, data, and funds contained in the Machine; and
  3. inform IBM or its subcontractor or the reseller of changes in the Machine's location;
- d. to provide IBM or its subcontractor or the reseller with sufficient and safe access to your facilities to permit IBM to fulfill its obligations;
- e. to allow IBM or its subcontractor or the reseller to install mandatory engineering changes, such as those required for safety;
- f. when the type of warranty service requires that you deliver a failing Machine to IBM, you agree to ship it suitably packaged, as IBM specifies, to a location IBM designates. After the Machine has been repaired or exchanged, IBM will return the repaired Machine or provide a replacement Machine to you at its expense, unless IBM specifies otherwise. IBM is responsible for loss of, or damage to, your Machine only while it is 1) in IBM's possession; or 2) in transit in those cases where IBM is responsible for the transportation charges; and
- g. to securely erase from any Machine you return to IBM for any reason all programs not provided by IBM with the Machine, and data, including without limitation the following: 1) information about identified or identifiable individuals or legal entities ("Personal Data"); and 2) your confidential or proprietary information and other data. If removing or deleting Personal Data is not possible, you agree to transform such information (e.g., by making it anonymous or encrypting it) so that it no longer qualifies as Personal Data under applicable law. You also agree to remove all funds from Machines returned to IBM. IBM is not responsible for any funds, programs not provided by IBM with the Machine, or data contained in a Machine that you return to IBM. You acknowledge that, to perform its responsibilities under this Statement of Limited Warranty, IBM may ship all or part of the Machine or its software to other IBM or third party locations around the world, and you authorize IBM to do so.

### **Limitation of Liability**

Circumstances may arise where, because of a default on IBM's part or other liability, you are entitled to recover damages from IBM. Regardless of the basis on which you are entitled to claim damages from IBM (including fundamental breach, negligence, misrepresentation, or other contract or tort claim), except for any liability that cannot be waived or limited by applicable laws, IBM's entire liability for all claims in the aggregate arising from or related to each Product will not exceed:

- a. damages for bodily injury (including death) and damage to real property and tangible personal property; and
- b. the amount of any other actual direct damages, up to the charges (if recurring, 12 months' charges apply) for the Machine that is subject of the claim. For purposes of this item, the term "Machine" includes Machine Code and Licensed Internal Code ("LIC").

This limit also applies to IBM's suppliers, subcontractors, and resellers. It is the maximum for which IBM and its suppliers, subcontractors, and resellers are collectively responsible.

**UNDER NO CIRCUMSTANCES IS IBM OR ITS SUPPLIERS, SUBCONTRACTORS, OR RESELLERS LIABLE FOR ANY OF THE FOLLOWING EVEN IF INFORMED OF THEIR POSSIBILITY: 1) THIRD PARTY CLAIMS AGAINST YOU FOR DAMAGES (OTHER THAN THOSE UNDER THE FIRST ITEM LISTED ABOVE); 2) LOSS OF, OR DAMAGE TO, DATA; 3) SPECIAL, INCIDENTAL, OR INDIRECT DAMAGES OR FOR ANY ECONOMIC CONSEQUENTIAL DAMAGES; OR 4) LOST PROFITS, BUSINESS, REVENUE, GOODWILL OR ANTICIPATED SAVINGS. SOME STATES OR JURISDICTIONS DO NOT ALLOW THE EXCLUSION OR LIMITATION OF INCIDENTAL OR CONSEQUENTIAL DAMAGES, SO THE ABOVE LIMITATION OR EXCLUSION MAY NOT APPLY TO YOU.**

#### **Governing Law**

Both you and IBM consent to the application of the laws of the country in which you acquired the Machine to govern, interpret, and enforce all of your and IBM's rights, duties, and obligations arising from, or relating in any manner to, the subject matter of this Statement of Limited Warranty, without regard to conflict of law principles.

**THESE WARRANTIES GIVE YOU SPECIFIC LEGAL RIGHTS, AND YOU MAY ALSO HAVE OTHER RIGHTS WHICH VARY FROM STATE TO STATE OR JURISDICTION TO JURISDICTION.**

#### **Jurisdiction**

All of our rights, duties, and obligations are subject to the courts of the country in which you acquired the Machine.

## **Part 2 - Country-unique Terms**

### **AMERICAS**

#### **Jurisdiction:**

*The following sentence is added to this section as it applies to countries in bold print below:*

Any litigation arising from this Statement of Limited Warranty will be settled exclusively by 1) in **Argentina**; the Ordinary Commercial Court of the city of Buenos Aires; 2) in **Bolivia**; the courts of the city of La Paz; 3) in **Brazil**; court of Rio de Janeiro, RJ; 4) in **Chile**; the Civil Courts of Justice of Santiago; 5) in **Colombia**; the Judges of the Republic of Colombia; 6) in **Ecuador**; the civil judges of Quito for executory or summary proceedings (as applicable); 7) in **Mexico**; the courts located in Mexico City, Federal District; 8) in **Paraguay**; the courts of the city of Asuncion; 9) in **Peru**; the judges and tribunals of the judicial district of Lima, Cercado; 10) in **Uruguay**; the courts of the city of Montevideo; 11) in **Venezuela**; the courts of the metropolitan area of the city of Caracas.

### **BRAZIL**

#### **Exchange of a Machine or Part:**

*Delete the last sentence:*

The replacement assumes the warranty service status of the replaced item.

## **CANADA**

### **What this Warranty Covers:**

*The following replaces the 2<sup>nd</sup> paragraph to this section:*

During the warranty period, IBM provides repair and exchange service for the Machine under the type of warranty service IBM designates for the Machine. The warranty period for the Machine is a fixed period starting on its original Date of Installation. The date on your purchase invoice or sales receipt is the Date of Installation unless IBM informs you otherwise. The warranty period, type of warranty, and service level that apply to your Machine are designated in Part 3.

### **Limitation of Liability:**

*The following replaces item a and item b of this section:*

- a. damages for bodily injury (including death) or physical harm to real property and tangible personal property caused by IBM's negligence; and
- b. the amount of any other actual direct damages, up to the greater of \$100,000.00 or the charges (if recurring, 12 months' charges apply) for the Machine that is subject of the claim. For purposes of this item, the term "Machine" includes Machine Code and Licensed Internal Code ("LIC").

### **Governing Law:**

*The following replaces "laws of the country in which you acquired the Machine" in the first sentence:*

laws in the Province of Ontario.

## **PERU**

### **Limitation of Liability:**

*The following is added at the end of this section:*

In accordance with Article 1328 of the Peruvian Civil Code the limitations and exclusions specified in this section will not apply to damages caused by IBM's willful misconduct ("dolo") or gross negligence ("culpa inexcusable").

## **UNITED STATES**

### **Governing Law:**

*The following replaces "laws of the country in which you acquired the Machine" in the first sentence:*

laws of the State of New York

## **ASIA PACIFIC**

## **AUSTRALIA**

### **What this Warranty Covers:**

*The following paragraph is added to this section:*

The warranties specified in this Section are in addition to any rights you may have under the Trade Practices Act 1974 or other similar legislation and are only limited to the extent permitted by the applicable legislation.

### **Limitation of Liability:**

*The following is added to this section:*

Where IBM is in breach of a condition or warranty implied by the Trade Practices Act 1974 or other similar legislation, IBM's liability is limited to the repair or replacement of the goods or the supply of equivalent goods. Where that condition or warranty relates to right to sell, quiet possession or clear title, or the goods are of a kind ordinarily acquired for personal, domestic or household use or consumption, then none of the limitations in this paragraph apply.

### **Governing Law:**

*The following replaces "laws of the country in which you acquired the Machine" in the first sentence:*

laws of the State or Territory

## **CAMBODIA AND LAOS**

### **Governing Law:**

*The following replaces "laws of the country in which you acquired the Machine" in the first sentence:*

laws of the State of New York, United States of America

## **CAMBODIA, INDONESIA AND LAOS**

### **Arbitration:**

*The following is added under this heading:*

Disputes arising out of or in connection with this Statement of Limited Warranty shall be finally settled by arbitration which shall be held in Singapore in accordance with the Arbitration Rules of Singapore International Arbitration Center ("SIAC Rules") then in effect. The arbitration award shall be final and binding for the parties without appeal and shall be in writing and set forth the findings of fact and the conclusions of law.

The number of arbitrators shall be three, with each side to the dispute being entitled to appoint one arbitrator. The two arbitrators appointed by the parties shall appoint a third arbitrator who shall act as chairman of the proceedings. Vacancies in the post of chairman shall be filled by the president of the SIAC. Other vacancies shall be filled by the respective nominating party. Proceedings shall continue from the stage they were at when the vacancy occurred.

If one of the parties refuses or otherwise fails to appoint an arbitrator within 30 days of the date the other party appoints its, the first appointed arbitrator shall be the sole arbitrator, provided that the arbitrator was validly and properly appointed.

All proceedings shall be conducted, including all documents presented in such proceedings, in the English language. The English language version of this Statement of Limited Warranty prevails over any other language version.

## **HONG KONG S.A.R.**

As applies to transactions initiated and performed in Hong Kong S.A.R., phrases throughout this Agreement containing the word “country” (for example, “country of purchase” and “country of Installation”) are replaced with “Hong Kong S.A.R.”

## **INDIA**

### **Limitation of Liability:**

*The following replaces item a and item b of this section:*

- a. liability for bodily injury (including death) or damage to real property and tangible personal property will be limited to that caused by IBM's negligence; and
- b. as to any other actual damage arising in any situation involving nonperformance by IBM pursuant to, or in any way related to the subject of this Statement of Limited Warranty, the charge paid by you for the individual Machine that is the subject of the claim. For purposes of this item, the term “Machine” includes Machine Code and Licensed Internal Code (“LIC”).

### **Arbitration:**

*The following is added under this heading:*

Disputes arising out of or in connection with this Statement of Limited Warranty shall be finally settled by arbitration which shall be held in Bangalore, India in accordance with the laws of India then in effect. The arbitration award shall be final and binding for the parties without appeal and shall be in writing and set forth the findings of fact and the conclusions of law.

The number of arbitrators shall be three, with each side to the dispute being entitled to appoint one arbitrator. The two arbitrators appointed by the parties shall appoint a third arbitrator who shall act as chairman of the proceedings. Vacancies in the post of chairman shall be filled by the president of the Bar Council of India. Other vacancies shall be filled by the respective nominating party. Proceedings shall continue from the stage they were at when the vacancy occurred.

If one of the parties refuses or otherwise fails to appoint an arbitrator within 30 days of the date the other party appoints its, the first appointed arbitrator shall be the sole arbitrator, provided that the arbitrator was validly and properly appointed.

All proceedings shall be conducted, including all documents presented in such proceedings, in the English language. The English language version of this Statement of Limited Warranty prevails over any other language version.

## **JAPAN**

**Governing Law:**

*The following sentence is added to this section:*

Any doubts concerning this Statement of Limited Warranty will be initially resolved between us in good faith and in accordance with the principle of mutual trust.

**MACAU S.A.R.**

As applies to transactions initiated and performed in Macau S.A.R., phrases throughout this Agreement containing the word “country” (for example, “country of purchase” and “country of Installation”) are replaced with “Macau S.A.R.”

**MALAYSIA****Limitation of Liability:**

*The word “**SPECIAL**” in item 3 of the last paragraph is deleted.*

**NEW ZEALAND****What this Warranty Covers:**

*The following paragraph is added to this section:*

The warranties specified in this section are in addition to any rights you may have under the Consumer Guarantees Act 1993 or other legislation which cannot be excluded or limited. The Consumer Guarantees Act 1993 will not apply in respect of any goods which IBM provides, if you require the goods for the purposes of a business as defined in that Act.

**Limitation of Liability:**

*The following is added to this section:*

Where Machines are not acquired for the purposes of a business as defined in the Consumer Guarantees Act 1993, the limitations in this Section are subject to the limitations in that Act.

**PEOPLE’S REPUBLIC OF CHINA (PRC)****Governing Law:**

*The following replaces “laws of the country in which you acquired the Machine” in the first sentence:*

laws of the State of New York, United States of America (except when local law requires otherwise).

**PHILIPPINES****Limitation of Liability:**

*Item 3 in the last paragraph is replaced by the following:*

**SPECIAL (INCLUDING NOMINAL AND EXEMPLARY DAMAGES), MORAL, INCIDENTAL, OR INDIRECT DAMAGES FOR ANY ECONOMIC CONSEQUENTIAL DAMAGES; OR**

**Arbitration:**

*The following is added under this heading:*

Disputes arising out of or in connection with this Statement of Limited Warranty shall be finally settled by arbitration which shall be held in Metro Manila, Philippines in accordance with the laws of the Philippines then in effect. The arbitration award shall be final and binding for the parties without appeal and shall be in writing and set forth the findings of fact and the conclusions of law.

The number of arbitrators shall be three, with each side to the dispute being entitled to appoint one arbitrator. The two arbitrators appointed by the parties shall appoint a third arbitrator who shall act as chairman of the proceedings. Vacancies in the post of chairman shall be filled by the president of the Philippine Dispute Resolution Center, Inc. Other vacancies shall be filled by the respective nominating party. Proceedings shall continue from the stage they were at when the vacancy occurred.

If one of the parties refuses or otherwise fails to appoint an arbitrator within 30 days of the date the other party appoints its, the first appointed arbitrator shall be the sole arbitrator, provided that the arbitrator was validly and properly appointed.

All proceedings shall be conducted, including all documents presented in such proceedings, in the English language. The English language version of this Statement of Limited Warranty prevails over any other language version.

**SINGAPORE**

**Limitation of Liability:**

*The words “**SPECIAL**” and “**ECONOMIC**” in item 3 in the last paragraph are deleted.*

**EUROPE, MIDDLE EAST, AFRICA (EMEA)**

**THE FOLLOWING TERMS APPLY TO ALL EMEA COUNTRIES:**

*The terms of this Statement of Limited Warranty apply to Machines purchased from IBM or an IBM reseller.*

**How to Obtain Warranty Service:**

*Add the following paragraphs in **Western Europe** (Andorra, Austria, Belgium, Bulgaria, Cyprus, Czech Republic, Denmark, Estonia, Finland, France, Germany, Greece, Hungary, Iceland, Ireland, Italy, Latvia, Liechtenstein, Lithuania, Luxembourg, Malta, Monaco, Netherlands, Norway, Poland, Portugal, Romania, San Marino, Slovakia, Slovenia, Spain, Sweden, Switzerland, United Kingdom, Vatican State, and any country subsequently added to the European Union, as from the date of accession):*

The warranty for Machines acquired in Western Europe shall be valid and applicable in all Western Europe countries provided the Machines have been announced and made available in such countries.



If you purchase a Machine in one of the Western European countries, as defined above, you may obtain warranty service for that Machine in any of those countries from either (1) an IBM reseller approved to perform warranty service or (2) from IBM, provided the Machine has been announced and made available by IBM in the country in which you wish to obtain service.

If you purchase a Machine in a Middle East or African country, you may obtain warranty service for that Machine from the IBM entity within the country of purchase, if that IBM entity provides warranty service in that country, or from an IBM reseller, approved by IBM to perform warranty service on that Machine in that country. Warranty service in Africa is available within 50 kilometers of an IBM approved service provider. You are responsible for transportation costs for Machines located outside 50 kilometers of an IBM approved service provider.

### **Governing Law:**

*The phrase “the laws of the country in which you acquired the Machine” is replaced by:*

1) “the laws of Austria” in **Albania, Armenia, Azerbaijan, Belarus, Bosnia-Herzegovina, Bulgaria, Croatia, Georgia, Hungary, Kazakhstan, Kyrgyzstan, FYR Macedonia, Moldova, Montenegro, Poland, Romania, Russia, Serbia, Slovakia, Slovenia, Tajikistan, Turkmenistan, Ukraine, and Uzbekistan;** 2) “the laws of France” in **Algeria, Benin, Burkina Faso, Cameroon, Central African Republic, Chad, Comoros, Congo Republic, Djibouti, Democratic Republic of Congo, Equatorial Guinea, French Guiana, French Polynesia, Gabon, Gambia, Guinea, Guinea-Bissau, Ivory Coast, Lebanon, Libya, Madagascar, Mali, Mauritania, Mauritius, Mayotte, Morocco, New Caledonia, Niger, Reunion, Senegal, Seychelles, Togo, Tunisia, Vanuatu, and Wallis & Futuna;** 3) “the laws of Finland” in **Estonia, Latvia, and Lithuania;** 4) “the laws of England” in **Angola, Bahrain, Botswana, Burundi, Egypt, Eritrea, Ethiopia, Ghana, Jordan, Kenya, Kuwait, Liberia, Malawi, Malta, Mozambique, Nigeria, Oman, Pakistan, Qatar, Rwanda, Sao Tome, Saudi Arabia, Sierra Leone, Somalia, Tanzania, Uganda, United Arab Emirates, the United Kingdom, West Bank/Gaza, Yemen, Zambia, and Zimbabwe;** 5) “the laws of South Africa” in **South Africa, Namibia, Lesotho and Swaziland;** 6) “the laws of Switzerland” in **Liechtenstein;** and 7) “the laws of Czech republic” in **Czech republic.**

### **Jurisdiction:**

*The following exceptions are added to this section:*

1) In **Austria;** the choice of jurisdiction for all disputes arising out of this Statement of Limited Warranty and relating thereto, including its existence, will be the competent court of law in Vienna, Austria (Inner-City); 2) in **Angola, Bahrain, Botswana, Burundi, Egypt, Eritrea, Ethiopia, Ghana, Jordan, Kenya, Kuwait, Liberia, Malawi, Malta, Mozambique, Nigeria, Oman, Pakistan, Qatar, Rwanda, Sao Tome, Saudi Arabia, Sierra Leone, Somalia, Tanzania, Uganda, United Arab Emirates, United Kingdom, West Bank/Gaza, Yemen, Zambia, and Zimbabwe;** all disputes arising out of this Statement of Limited Warranty or related to its execution, including summary proceedings, will be submitted to the exclusive jurisdiction of the English courts; 3) in **Belgium and Luxembourg;** all disputes arising out of this Statement of Limited Warranty or related to its interpretation or its execution, the law, and the courts of the capital city, of the country of your registered office and/or commercial site location only are competent; 4) in **France, Algeria, Benin, Burkina Faso, Cameroon, Central African Republic, Chad,**

**Comoros, Congo Republic, Djibouti, Democratic Republic of Congo, Equatorial Guinea, French Guiana, French Polynesia, Gabon, Gambia, Guinea, Guinea-Bissau, Ivory Coast, Lebanon, Libya, Madagascar, Mali, Mauritania, Mauritius, Mayotte, Morocco, New Caledonia, Niger, Reunion, Senegal, Seychelles, Togo, Tunisia, Vanuatu, and Wallis & Futuna;** all disputes arising out of this Statement of Limited Warranty or related to its violation or execution, including summary proceedings, will be settled exclusively by the Commercial Court of Paris; 5) in **South Africa, Namibia, Lesotho and Swaziland;** both of us agree to submit all disputes relating to this Statement of Limited Warranty to the jurisdiction of the High Court in Johannesburg; 6) in **Turkey;** all disputes arising out of or in connection with this Statement of Limited Warranty shall be resolved by the Istanbul Central (Sultanahmet) Courts and Execution Directorates of Istanbul, the Republic of Turkey; 7) in each of the following specified countries, any legal claim arising out of this Statement of Limited Warranty will be brought before, and settled exclusively by, the competent court of a) Athens for **Greece**, b) Tel Aviv-Jaffa for **Israel**, c) Milan for **Italy**, d) Lisbon for **Portugal**, and e) Madrid for **Spain**; 8) in **the United Kingdom;** both of us agree to submit all disputes relating to this Statement of Limited Warranty to the exclusive jurisdiction of the English courts; 9) in **Liechtenstein;** all of our rights, duties, and obligations are settled exclusively by the competent court of Zurich; and 10) “to the competent courts of Czech republic”.

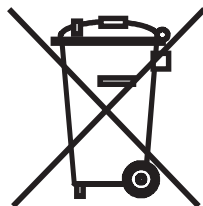
#### **Arbitration:**

*The following is added under this heading:*

In **Albania, Armenia, Azerbaijan, Belarus, Bosnia-Herzegovina, Bulgaria, Croatia, Georgia, Hungary, Kazakhstan, Kyrgyzstan, Libya, FYR Macedonia, Moldova, Montenegro, Poland, Romania, Russia, Serbia, Slovakia, Slovenia, Tajikistan, Turkmenistan, Ukraine, and Uzbekistan** all disputes arising out of this Statement of Limited Warranty or related to its violation, termination or nullity will be finally settled under the Rules of Arbitration and Conciliation of the International Arbitral Center of the Federal Economic Chamber in Vienna (Vienna Rules) by three arbitrators appointed in accordance with these rules. The arbitration will be held in Vienna, Austria, and the official language of the proceedings will be English. The decision of the arbitrators will be final and binding upon both parties. Therefore, pursuant to paragraph 598 (2) of the Austrian Code of Civil Procedure, the parties expressly waive the application of paragraph 595 (1) figure 7 of the Code. IBM may, however, institute proceedings in a competent court in the country of installation.

In **Estonia, Latvia and Lithuania** all disputes arising in connection with this Statement of Limited Warranty will be finally settled in arbitration that will be held in Helsinki, Finland in accordance with the arbitration laws of Finland then in effect. Each party will appoint one arbitrator. The arbitrators will then jointly appoint the chairman. If arbitrators cannot agree on the chairman, then the Central Chamber of Commerce in Helsinki will appoint the chairman.

#### **EUROPEAN UNION (EU) BATTERY DIRECTIVE**



**Notice:** This mark applies only to countries within the European Union (EU).

Batteries or packaging for batteries are labeled in accordance with European Directive 2006/66/EC concerning batteries and accumulators and waste batteries and accumulators. The Directive determines the framework for the return and recycling of used batteries and accumulators as applicable throughout the European Union. This label is applied to various batteries to indicate that the battery is not to be thrown away, but rather reclaimed upon end of life per this Directive.

In accordance with the European Directive 2006/66/EC, batteries and accumulators are labeled to indicate that they are to be collected separately and recycled at end of life. The label on the battery may also include a chemical symbol for the metal concerned in the battery (Pb for lead, Hg for mercury, and Cd for cadmium). Users of batteries and accumulators must not dispose of batteries and accumulators as unsorted municipal waste, but use the collection framework available to customers for the return, recycling, and treatment of batteries and accumulators. Customer participation is important to minimize any potential effects of batteries and accumulators on the environment and human health due to the potential presence of hazardous substances.

The retail price of batteries, accumulators and power cells includes the cost of the environmental management of their waste. For proper collection and treatment, contact your local IBM representative.

#### **THE FOLLOWING TERMS APPLY TO ALL EU COUNTRIES:**

The warranty for Machines acquired in EU countries is valid and applicable in all EU countries provided the Machines have been announced and made available in such countries.

**DENMARK, FINLAND, GREECE, ITALY, LIECHTENSTEIN, NETHERLANDS, NORWAY, PORTUGAL, SPAIN, SWEDEN AND SWITZERLAND**

#### **Limitation of Liability:**

*The following replaces the terms of this section in its entirety:*

Except as otherwise provided by mandatory law:

- a. IBM's liability for any damages and losses that may arise as a consequence of the fulfillment of its obligations under or in connection with this Statement of Limited Warranty or due to any other cause related to this Statement of Limited Warranty is limited to the compensation of only those damages and losses proved and actually arising as an immediate and direct consequence of the non-fulfillment of such obligations (if IBM is at fault) or of such cause, for a maximum amount equal to the charges you paid for the Machine. For purposes of this item, the term "Machine" includes Machine Code and Licensed Internal Code ("LIC").

The above limitation shall not apply to damages for bodily injuries (including death) and damages to real property and tangible personal property for which IBM is legally liable.

- b. **UNDER NO CIRCUMSTANCES IS IBM, OR ITS SUPPLIERS, SUBCONTRACTORS, OR RESELLERS LIABLE FOR ANY OF THE FOLLOWING, EVEN IF INFORMED OF THEIR POSSIBILITY: 1) LOSS OF, OR DAMAGE TO, DATA; 2) INCIDENTAL OR INDIRECT DAMAGES, OR FOR ANY ECONOMIC CONSEQUENTIAL DAMAGES; 3) LOST PROFITS, EVEN IF THEY ARISE AS AN IMMEDIATE CONSEQUENCE OF THE EVENT THAT GENERATED THE DAMAGES; OR 4) LOSS OF BUSINESS, REVENUE, GOODWILL, OR ANTICIPATED SAVINGS.**

## FRANCE AND BELGIUM

### Limitation of Liability:

*The following replaces the terms of this section in its entirety:*

Except as otherwise provided by mandatory law:

- a. IBM's liability for any damages and losses that may arise as a consequence of the fulfillment of its obligations under or in connection with this Statement of Limited Warranty is limited in the aggregate to the compensation of only those damages and losses proved and actually arising as an immediate and direct consequence of the non-fulfillment of such obligations (if IBM is at fault), for a maximum amount equal to the charges you paid for the Machine that has caused the damages. For purposes of this item, the term "Machine" includes Machine Code and Licensed Internal Code ("LIC").

This limit also applies to IBM's suppliers, subcontractors, and resellers. It is the maximum for which IBM and its suppliers, subcontractors and resellers are collectively responsible.

The above limitation shall not apply to damages for bodily injuries (including death) and damages to real property and tangible personal property for which IBM is legally liable.

- b. **UNDER NO CIRCUMSTANCES IS IBM, OR ITS SUPPLIERS, SUBCONTRACTORS, OR RESELLERS LIABLE FOR ANY OF THE FOLLOWING, EVEN IF INFORMED OF THEIR POSSIBILITY: 1) LOSS OF, OR DAMAGE TO, DATA; 2) INCIDENTAL OR INDIRECT DAMAGES, OR FOR ANY ECONOMIC CONSEQUENTIAL DAMAGES; 3) LOST PROFITS, EVEN IF THEY ARISE AS AN IMMEDIATE CONSEQUENCE OF THE EVENT THAT GENERATED THE DAMAGES; OR 4) LOSS OF BUSINESS, REVENUE, GOODWILL, OR ANTICIPATED SAVINGS.**

## THE FOLLOWING TERMS APPLY TO THE COUNTRY SPECIFIED:

### AUSTRIA AND GERMANY

#### What this Warranty Covers:

*The following replaces the first sentence of the first paragraph of this section:*

The warranty for an IBM Machine covers the functionality of the Machine for its normal use and the Machine's conformity to its Specifications.

*The following paragraph is added to this section:*

The minimum warranty period for Machines is 12 months. In case IBM or your reseller is unable to repair an IBM Machine, you can alternatively ask for a price reduction as far as justified by the reduced value of the unrepaired Machine or ask for a cancellation of the respective agreement for such Machine and get your money refunded.

*The second paragraph does not apply.*

#### What IBM Will Do to Correct Problems:

*The following is added to this section:*

During the warranty period, transportation for the delivery of the failing Machine to IBM will be at IBM's expense.

**Limitation of Liability:**

*The following paragraph is added to this section:*

The limitations and exclusions specified in the Statement of Limited Warranty will not apply to damages caused by IBM with fraud or gross negligence and for express warranty.

*The following sentence is added to the end of item "b":*

IBM's liability under this item is limited to the violation of essential contractual terms in cases of ordinary negligence.

**IRELAND**

**What this Warranty Covers:**

*The following is added to this section:*

Except as expressly provided in these terms and conditions or Section 12 of the Sale of Goods Act 1893 as amended by the Sale of Goods and Supply of Services Act, 1980 ("the 1980 Act"), all conditions or warranties (express or implied, statutory or otherwise) are hereby excluded including, without limitation, any warranties implied by the Sale of Goods Act 1893 as amended by the 1980 Act (including, for the avoidance of doubt, section 39 of the 1980 Act).

**Limitation of Liability:**

*The following replaces the terms of this section in its entirety:*

For the purposes of this section, a "Default" means any act, statement, omission, or negligence on the part of IBM in connection with, or in relation to, the subject matter of this Statement of Limited Warranty in respect of which IBM is legally liable to you, whether in contract or tort. A number of Defaults which together result in, or contribute to, substantially the same loss or damage will be treated as one Default occurring on the date of occurrence of the last such Default.

Circumstances may arise where, because of a Default, you are entitled to recover damages from IBM.

This section sets out the extent of IBM's liability and your sole remedy.

- a. IBM will accept unlimited liability for death or personal injury caused by the negligence of IBM.
- b. Subject always to the **Items for Which IBM is Not Liable** below, IBM will accept unlimited liability for physical damages to your tangible property resulting from the negligence of IBM.
- c. Except as provided in items "a" and "b" above, IBM's entire liability for actual damages for any one Default will not in any event exceed the greater of 1) EUR 125,000, or 2) 125% of the amount you paid for the Machine directly relating to the Default.

## **Items for Which IBM is Not Liable**

Save with respect to any liability referred to in item “a” above, under no circumstances is IBM, its suppliers or resellers liable for any of the following, even if IBM or they were informed of the possibility of such losses:

- a. loss of, or damage to, data;
- b. special, indirect, or consequential loss; or
- c. loss of profits, business, revenue, goodwill, or anticipated savings.

## **SOUTH AFRICA, NAMIBIA, BOTSWANA, LESOTHO AND SWAZILAND**

### **Limitation of Liability:**

*The following is added to this section:*

IBM's entire liability to you for actual damages arising in all situations involving nonperformance by IBM in respect of the subject matter of this Statement of Warranty will be limited to the charge paid by you for the individual Machine that is the subject of your claim from IBM.

## **TURKEY**

### **What this Warranty Covers:**

*The following is added to this section:*

The minimum warranty period for Machines is 2 years.

## **UNITED KINGDOM**

### **Limitation of Liability:**

*The following replaces the terms of this section in its entirety:*

For the purposes of this section, a “Default” means any act, statement, omission, or negligence on the part of IBM in connection with, or in relation to, the subject matter of this Statement of Limited Warranty in respect of which IBM is legally liable to you, whether in contract or tort. A number of Defaults which together result in, or contribute to, substantially the same loss or damage will be treated as one Default.

Circumstances may arise where, because of a Default, you are entitled to recover damages from IBM.

This section sets out the extent of IBM's liability and your sole remedy.

- a. IBM will accept unlimited liability for:
  - 1. death or personal injury caused by the negligence of IBM; and
  - 2. any breach of its obligations implied by Section 12 of the Sale of Goods Act 1979 or Section 2 of the Supply of Goods and Services Act 1982, or any statutory modification or re-enactment of either such Section.
- b. IBM will accept unlimited liability, subject always to the Items for Which IBM is Not Liable below, for physical damage to your tangible property resulting from the negligence of IBM.

- c. IBM's entire liability for actual damages for any one Default will not in any event, except as provided in items a and b above, exceed the greater of 1) Pounds Sterling 75,000, or 2) 125% of the total purchase price payable or the charges for the Machine directly relating to the Default.

These limits also apply to IBM's suppliers and resellers. They state the maximum for which IBM and such suppliers and resellers are collectively responsible.

#### Items for Which IBM is Not Liable

Save with respect to any liability referred to in item a above, under no circumstances is IBM or any of its suppliers or resellers liable for any of the following, even if IBM or they were informed of the possibility of such losses:

- a. loss of, or damage to, data;
- b. special, indirect, or consequential loss;
- c. loss of profits, business, revenue, goodwill, or anticipated savings; or
- d. third party claims against you for damages.

## Part 3 - Warranty Information

Machine Type(s)	Country of Purchase	Warranty Period	Type of Warranty Service*	Service Level*
Brocade 20-Port 8 Gb SAN Switch Module for IBM BladeCenter	Worldwide	1 year	1	1
Brocade 10-Port 8 Gb SAN Switch Module for IBM BladeCenter	Worldwide	1 year	1	1
* See "Types of Warranty Service" and "Service Levels" for explanations of warranty-service types and service levels.				

Scheduling of a warranty service will depend upon the following: 1) the time your request for service is received, 2) Machine technology and redundancy, and 3) availability of parts. Contact your local IBM representative or the subcontractor or reseller performing services on behalf of IBM for country and location specific information.

#### Types of Warranty Service

##### Type 1 - Customer Replaceable Unit ("CRU") Service

IBM provides replacement CRUs to you for you to install. CRU information and replacement instructions are shipped with your Machine and are available from IBM at any time on your request. CRUs are designated as being either a Tier 1 (mandatory) or a Tier 2 (optional) CRU. Installation of a Tier 1 CRU is your responsibility. If IBM installs a Tier 1 CRU at your request, you will be charged for the installation. You may install a Tier 2 CRU yourself or request IBM to install it, at no additional charge, under the type of warranty service designated for your Machine. IBM specifies in the



materials shipped with a replacement CRU whether a defective CRU must be returned to IBM. When return is required, 1) return instructions and a container are shipped with the replacement CRU, and 2) you may be charged for the replacement CRU if IBM does not receive the defective CRU within 15 days of your receipt of the replacement.

**Type 5 - CRU and On-site Service**

At IBM's discretion you will receive CRU service or IBM or your reseller will repair the failing Machine at your location and verify its operation. You must provide suitable working area to allow disassembly and reassembly of the IBM Machine. The area must be clean, well lit and suitable for the purpose.

**Type 6 - CRU and Courier or Depot Service**

At IBM's discretion you will receive CRU service or you will disconnect the failing Machine for collection arranged by IBM. IBM will provide you with a shipping container for you to return your Machine to a designated service center. A courier will pick up your Machine and deliver it to the designated service center. Following its repair or exchange, IBM will arrange the return delivery of the Machine to your location. You are responsible for its installation and verification of operation.

**Type 7 - CRU and Customer Carry-In or Mail-In Service**

At IBM's discretion you will receive CRU service or you will deliver or mail as IBM specifies (prepaid unless IBM specifies otherwise) the failing Machine suitably packaged to a location IBM designates. After IBM has repaired or exchanged the Machine, IBM will make it available for your collection or, for Mail-in Service, IBM will return it to you at IBM's expense, unless IBM specifies otherwise. You are responsible for its installation and verification of operation.

**Type 8 - CRU and Machine Exchange Service**

At IBM's discretion you will receive specified CRU service or IBM will initiate shipment of a replacement Machine to your location. You must pack the failing Machine into the shipping container that contained the replacement Machine and return the failing Machine to IBM. Transportation charges, both ways, are paid by IBM. You may be charged for the replacement Machine if IBM does not receive the failing Machine within 15 days of your receipt of the replacement Machine. You are responsible for its installation and verification of operation.

**Service Levels**

Service levels specified below are response-time objectives only and are not guarantees. The specified service level may not be available in all worldwide locations. Charges may apply outside IBM's normal service area. Response times are based on local standard business days and working hours. Unless otherwise specified, all responses are measured from the time the customer contacts IBM for problem determination until IBM has resolved the problem remotely or scheduled service to be performed. Same Business Day Warranty Service (SBD) is based on local standard business days and working hours. Next Business Day Warranty Service (NBD) is based on commercially reasonable effort.

IBM encourages you to use available remote support technologies. Failure to install and use available remote connectivity tools and equipment for direct problem reporting, remote problem determination and resolution may result in an increased service level response-time due to resource requirements.

1. Next Business Day (NBD), 9X5



2. Same Business Day (SBD), 9X5
3. Same Day (SD), 24X7

#### **IBM Contact Information**

For IBM in Canada or the United States, call 1-800-IBM-SERV (or 1-800-426-7378). For IBM in the European Union (EU), Asia Pacific, and Latin America countries, contact IBM in that country or visit the IBM Directory of Worldwide Contacts at the following IBM Internet website: <http://www.ibm.com/planetwide/>.



---

## Appendix D. Notices

This information was developed for products and services offered in the U.S.A.

IBM may not offer the products, services, or features discussed in this document in other countries. Consult your local IBM representative for information on the products and services currently available in your area. Any reference to an IBM product, program, or service is not intended to state or imply that only that IBM product, program, or service may be used. Any functionally equivalent product, program, or service that does not infringe any IBM intellectual property right may be used instead. However, it is the user's responsibility to evaluate and verify the operation of any non-IBM product, program, or service.

IBM may have patents or pending patent applications covering subject matter described in this document. The furnishing of this document does not give you any license to these patents. You can send license inquiries, in writing, to:

*IBM Director of Licensing  
IBM Corporation  
North Castle Drive  
Armonk, NY 10504-1785  
U.S.A.*

INTERNATIONAL BUSINESS MACHINES CORPORATION PROVIDES THIS PUBLICATION "AS IS" WITHOUT WARRANTY OF ANY KIND, EITHER EXPRESS OR IMPLIED, INCLUDING, BUT NOT LIMITED TO, THE IMPLIED WARRANTIES OF NON-INFRINGEMENT, MERCHANTABILITY OR FITNESS FOR A PARTICULAR PURPOSE. Some states do not allow disclaimer of express or implied warranties in certain transactions, therefore, this statement may not apply to you.

This information could include technical inaccuracies or typographical errors. Changes are periodically made to the information herein; these changes will be incorporated in new editions of the publication. IBM may make improvements and/or changes in the product(s) and/or the program(s) described in this publication at any time without notice.

Any references in this information to non-IBM Web sites are provided for convenience only and do not in any manner serve as an endorsement of those Web sites. The materials at those Web sites are not part of the materials for this IBM product, and use of those Web sites is at your own risk.

IBM may use or distribute any of the information you supply in any way it believes appropriate without incurring any obligation to you.

---

## Trademarks

IBM, the IBM logo, and ibm.com are trademarks or registered trademarks of International Business Machines Corporation in the United States, other countries, or both. If these and other IBM trademarked terms are marked on their first occurrence in this information with a trademark symbol (<sup>®</sup> or <sup>™</sup>), these symbols indicate U.S. registered or common law trademarks owned by IBM at the time this information was published. Such trademarks may also be registered or common law trademarks in other countries. A current list of IBM trademarks is available on the Web at "Copyright and trademark information" at <http://www.ibm.com/legal/copytrade.shtml>.

Adobe and PostScript are either registered trademarks or trademarks of Adobe Systems Incorporated in the United States and/or other countries.

Cell Broadband Engine is a trademark of Sony Computer Entertainment, Inc., in the United States, other countries, or both and is used under license therefrom.

Intel, Intel Xeon, Itanium, and Pentium are trademarks or registered trademarks of Intel Corporation or its subsidiaries in the United States and other countries.

Java and all Java-based trademarks are trademarks of Sun Microsystems, Inc., in the United States, other countries, or both.

Linux is a registered trademark of Linus Torvalds in the United States, other countries, or both.

Microsoft, Windows, and Windows NT are trademarks of Microsoft Corporation in the United States, other countries, or both.

UNIX is a registered trademark of The Open Group in the United States and other countries.

Other company, product, or service names may be trademarks or service marks of others.

---

## Important notes

Processor speed indicates the internal clock speed of the microprocessor; other factors also affect application performance.

CD or DVD drive speed is the variable read rate. Actual speeds vary and are often less than the possible maximum.

When referring to processor storage, real and virtual storage, or channel volume, KB stands for 1024 bytes, MB stands for 1 048 576 bytes, and GB stands for 1 073 741 824 bytes.

When referring to hard disk drive capacity or communications volume, MB stands for 1 000 000 bytes, and GB stands for 1 000 000 000 bytes. Total user-accessible capacity can vary depending on operating environments.

Maximum internal hard disk drive capacities assume the replacement of any standard hard disk drives and population of all hard disk drive bays with the largest currently supported drives that are available from IBM.

Maximum memory might require replacement of the standard memory with an optional memory module.

IBM makes no representation or warranties regarding non-IBM products and services that are ServerProven®, including but not limited to the implied warranties of merchantability and fitness for a particular purpose. These products are offered and warranted solely by third parties.

IBM makes no representations or warranties with respect to non-IBM products. Support (if any) for the non-IBM products is provided by the third party, not IBM.

Some software might differ from its retail version (if available) and might not include user manuals or all program functionality.

---

## Electronic emission notices

### Federal Communications Commission (FCC) statement

**Note:** This equipment has been tested and found to comply with the limits for a Class A digital device, pursuant to Part 15 of the FCC Rules. These limits are designed to provide reasonable protection against harmful interference when the equipment is operated in a commercial environment. This equipment generates, uses, and can radiate radio frequency energy and, if not installed and used in accordance with the instruction manual, may cause harmful interference to radio communications. Operation of this equipment in a residential area is likely to cause harmful interference, in which case the user will be required to correct the interference at his own expense.

Properly shielded and grounded cables and connectors must be used in order to meet FCC emission limits. IBM is not responsible for any radio or television interference caused by using other than recommended cables and connectors or by unauthorized changes or modifications to this equipment. Unauthorized changes or modifications could void the user's authority to operate the equipment.

This device complies with Part 15 of the FCC Rules. Operation is subject to the following two conditions: (1) this device may not cause harmful interference, and (2) this device must accept any interference received, including interference that may cause undesired operation.

### Industry Canada Class A emission compliance statement

This Class A digital apparatus complies with Canadian ICES-003.

### Avis de conformité à la réglementation d'Industrie Canada

Cet appareil numérique de la classe A est conforme à la norme NMB-003 du Canada.

### Australia and New Zealand Class A statement

**Attention:** This is a Class A product. In a domestic environment this product may cause radio interference in which case the user may be required to take adequate measures.

### United Kingdom telecommunications safety requirement

#### Notice to Customers

This apparatus is approved under approval number NS/G/1234/J/100003 for indirect connection to public telecommunication systems in the United Kingdom.

### European Union EMC Directive conformance statement

This product is in conformity with the protection requirements of EU Council Directive 2004/108/EC on the approximation of the laws of the Member States relating to electromagnetic compatibility. IBM cannot accept responsibility for any failure to satisfy the protection requirements resulting from a nonrecommended modification of the product, including the fitting of non-IBM option cards.

This product has been tested and found to comply with the limits for Class A Information Technology Equipment according to CISPR 22/European Standard EN 55022. The limits for Class A equipment were derived for commercial and industrial environments to provide reasonable protection against interference with licensed communication equipment.

**Attention:** This is a Class A product. In a domestic environment this product may cause radio interference in which case the user may be required to take adequate measures.

European Community contact:  
IBM Technical Regulations  
Pascalstr. 100, Stuttgart, Germany 70569  
Telephone: 0049 (0)711 785 1176  
Fax: 0049 (0)711 785 1283  
E-mail: tjahn@de.ibm.com

## Taiwanese Class A warning statement

警告使用者：  
這是甲類的資訊產品，在  
居住的環境中使用時，可  
能會造成射頻干擾，在這  
種情況下，使用者會被要  
求採取某些適當的對策。

## Germany Electromagnetic Compatibility Directive

### Deutschsprachiger EU Hinweis:

#### Hinweis für Geräte der Klasse A EU-Richtlinie zur Elektromagnetischen Verträglichkeit

Dieses Produkt entspricht den Schutzanforderungen der EU-Richtlinie 2004/108/EG zur Angleichung der Rechtsvorschriften über die elektromagnetische Verträglichkeit in den EU-Mitgliedsstaaten und hält die Grenzwerte der EN 55022 Klasse A ein.

Um dieses sicherzustellen, sind die Geräte wie in den Handbüchern beschrieben zu installieren und zu betreiben. Des Weiteren dürfen auch nur von der IBM empfohlene Kabel angeschlossen werden. IBM übernimmt keine Verantwortung für die Einhaltung der Schutzanforderungen, wenn das Produkt ohne Zustimmung der IBM verändert bzw. wenn Erweiterungskomponenten von Fremdherstellern ohne Empfehlung der IBM gesteckt/eingebaut werden.

EN 55022 Klasse A Geräte müssen mit folgendem Warnhinweis versehen werden:  
"Warnung: Dieses ist eine Einrichtung der Klasse A. Diese Einrichtung kann im Wohnbereich Funk-Störungen verursachen; in diesem Fall kann vom Betreiber verlangt werden, angemessene Maßnahmen zu ergreifen und dafür aufzukommen."

### **Deutschland: Einhaltung des Gesetzes über die elektromagnetische Verträglichkeit von Geräten**

Dieses Produkt entspricht dem "Gesetz über die elektromagnetische Verträglichkeit von Geräten (EMVG)". Dies ist die Umsetzung der EU-Richtlinie 2004/108/EG in der Bundesrepublik Deutschland.

### **Zulassungsbescheinigung laut dem Deutschen Gesetz über die elektromagnetische Verträglichkeit von Geräten (EMVG) (bzw. der EMC EG Richtlinie 2004/108/EG) für Geräte der Klasse A**

Dieses Gerät ist berechtigt, in Übereinstimmung mit dem Deutschen EMVG das EG-Konformitätszeichen - CE - zu führen. Verantwortlich für die Konformitätserklärung des EMVG ist die IBM Deutschland GmbH, 70548 Stuttgart.

#### **Generelle Informationen:**

Das Gerät erfüllt die Schutzanforderungen nach EN 55024 und EN 55022 Klasse A.

### **People's Republic of China Class A warning statement**

**声 明**  
此为 A 级产品。在生活环境中，  
该产品可能会造成无线电干扰。  
在这种情况下，可能需要用户对其  
干扰采取切实可行的措施。

### **Japanese Voluntary Control Council for Interference (VCCI) statement**

この装置は、情報処理装置等電波障害自主規制協議会（VCCI）の基準に基づくクラスA情報技術装置です。この装置を家庭環境で使用すると電波妨害を引き起こすことがあります。この場合には使用者が適切な対策を講ずるよう要求されることがあります。

### **Korean Class A warning statement**

이 기기는 업무용으로 전자파 적합등록을 받은 기기  
이오니, 판매자 또는 사용자는 이점을 주의하시기  
바라며, 만약 잘못 구입하셨을 때에는 구입한 곳에  
서 비업무용으로 교환하시기 바랍니다.





---

# Index

## A

- accessing the management module 25
- accessing the Telnet program 36
- accessing the Web interface 43
- activities, LED 33
- adapter, host bus 3, 15
- advanced features 41
- assistance, getting 57
- attention notices 8

## B

- Backspace key, using, with commands in the Telnet interface 40
- battery
  - removing 23, 55
  - safety 23, 55
- bay locations, BladeCenter unit 17
- bay/expansion-card port correlation 17
- BIOS code updates 19, 53
- blade server
  - configuration requirements 53
  - installation requirements 53
  - interconnections with I/O modules and expansion card 3, 16
  - network requirements 3, 16
  - verifying system compatibility 52
- BladeCenter components
  - completing the system installation requirements 5
  - configuration requirements 16, 53
  - enabling 25, 53
  - installation requirements 52, 53
  - replaceable 49
  - software requirements 19, 53
  - troubleshooting 52
  - upgrading device drivers, firmware, and BIOS code for 19, 53
  - verifying system compatibility 52
- BladeCenter documentation 3, 4, 5, 7
- BladeCenter Management window 37, 43
- BladeCenter management-module Web interface, using 35
- BladeCenter Switch Management window 37, 43
- BladeCenter unit
  - configuration requirements 16, 53
  - I/O-module bay locations 17
  - management-module interface, Internet protocol (IP) address, entering 36, 42
  - operating speeds for internal and external ports 16
  - power LED on power module 20, 30
  - verifying system compatibility 52
  - with a multi-switch interconnect module (MSIM) installed in I/O-module bays 8 and 10 17
- BladeCenter Web sites
  - configuration requirements for the I/O module and BladeCenter unit 16
  - documentation 5

- BladeCenter Web sites (*continued*)
  - IBM System Information Center 4, 7
- Brocade documentation 7
- Brocade Fabric OS 7

## C

- cables
  - documentation 7, 18, 49
  - fiber-optic 23
  - requirements for I/O modules 7, 18, 22, 49
- capabilities, increasing 47
- caution statements 8
- CD, documentation 5, 7
- CD, support 5, 8
- changing items in brackets in the Telnet interface 40
- changing passwords 38
- checklist
  - I/O module preinstallation requirements 15
  - inventory 5
  - troubleshooting
    - enabling devices and parameters 53
    - hardware problems 52
    - installation of BladeCenter components 52, 53
    - peripheral devices 53
    - power-on self-test (POST) errors 51
    - running power-on self-test (POST) 51
    - software problems 53
    - system-configuration problems 53
    - upgrading device drivers, firmware, and BIOS code for BladeCenter components 19, 53
    - verifying system compatibility 52
- Class A electronic emission notice 81
- client reference program, IBM web site 4
- Command Line Interface Shell window 37, 38
- command-line interface (CLI)
  - documentation 6, 7, 40
  - format for commands in the Telnet interface 40
- command-line interface window 38
- command-prompt window 38
- commands
  - changing items in brackets in the Telnet interface 40
  - command-line interface (CLI) documentation 40
  - overview 40
  - syntax 40
  - Telnet interface 37
  - using keywords 40
  - using the Backspace and Delete keys with commands in the Telnet interface 40
  - Web interface 44
- communication requirements 3, 15, 16
- compatible
  - BladeCenter optional devices Web site 18
  - host bus adapter (HBA) 3, 15
  - I/O modules 17
- completing the system installation requirements 5

- components
  - completing the system installation requirements 5
  - configuration requirements 53
  - I/O module 14
  - information panel 27
  - installation requirements 52, 53
  - replaceable 49
  - software requirements 19, 53
  - troubleshooting 52
  - verifying system compatibility 52
- configuration
  - cable requirements 7, 18, 49
  - options 7, 16, 18, 49
  - problems 53
  - requirements 16
  - requirements for BladeCenter components 53
  - settings 35, 41
  - through a Telnet interface 35
  - through the Web interface 41
  - through the Web Tools interface 41
- Configuration and Options Guide 7, 18, 49
- configuration menus
  - external ports 27
  - management module, accessing 25
- connecting to the I/O module
  - Telnet interface 36
  - Web interface 42
- connecting to the management module 25
- country-unique warranty terms 63
- courier or depot service 76
- creating a personalized support page 3
- critical errors 51
- critical failures 52
- CRU list 49
- CRU part numbers 49
- CRU service 76
- customer carry-in service 76
- customer replaceable unit (CRU) 49
- customer replaceable unit service 76

## D

- danger statements 8
- Delete key, using, with commands in the Telnet interface 40
- depot or courier service 76
- device drivers
  - installing 19, 53
  - updating 19, 53
- diagnostic flash patterns of LEDs 33
- diagnostic indicators 52
- dimensions 12
- documentation
  - BladeCenter 3, 4, 5, 7
  - Brocade 7
  - cable requirements 7, 18, 49
  - command-line interface (CLI) 6, 7, 40
  - Configuration and Options Guide 7, 18, 49
  - configuration requirements for the I/O module and BladeCenter unit 16
  - IBM 3, 4, 5, 7

- documentation (*continued*)
  - multi-switch interconnect module (MSIM) 6
  - related 5, 7
  - troubleshooting information 51, 53
  - updates 3, 7
  - Web Tools interface 7

## E

- electrical standards 13
- electronic emission Class A notice 81
- emissions standards 13
- enabling configuration settings 35, 41
- enabling devices and parameters 53
- enabling the I/O module and its external ports 25
- Enter Network Password window 36, 42
- entering the IP address of the BladeCenter unit
  - management-module interface 36, 42
- environmental specifications 12
- error
  - codes 52
  - critical 51
  - log
    - management module 22, 29
    - power-on self-test (POST) 29, 30
  - noncritical 51
- establishing a Telnet session
  - through a terminal emulator program 37
  - through the management module 36, 37
- establishing a Web-interface session
  - through a Web browser 44
  - through the management module 42
- Ethernet
  - connection 37
  - port 35, 41
- event log, management module 22, 29
- exchanging a machine or part 61
- expanding the functionality of the I/O module 47
- expansion card
  - interconnections with blade server and I/O modules 3, 16
  - network requirements 3, 16
  - port correlation to I/O-module bays 17
- external devices, enabling 53
- external port diagnostics (!) LED 32, 33
- external port status (TX/RX) LED 31, 32, 33
- external ports
  - characteristics 11
  - configuration menus 27
  - enabling 25
  - Ethernet, on BladeCenter unit 35, 41
  - LC-LC fiber-optic cables 22
  - location 27
  - operating speeds on I/O module 16
  - remote access 35, 41
  - specifications 11
  - types 11

## F

- fabric
  - aggregate bandwidth 11
  - latency 11
  - management methods 12
  - point-to-point 11
  - port speed 11
- failures, critical and noncritical 52
- fault LED (!)
  - external port 32, 33
  - I/O module 28, 30, 31, 33
- FCC Class A notice 81
- features 2, 9
- fiber-optic cables 22, 23
- Fibre Channel
  - expansion card 3
  - I/O module fault (!) LED 28, 31, 33
  - ports 2, 11, 27
  - protocols 11
  - service classes 11
  - standards 10
  - switch fault 31
- Fibre Channel I/O module
  - battery, removing 23, 55
  - bay/expansion-card port correlation 17
  - cable requirements 18
  - configuration requirements 16
  - front panel 27
  - handling static-sensitive devices 19
  - installation guidelines 18
  - installing 15, 19
  - LEDs 28, 29
  - ports 27
  - power-on self-test (POST) status, on management-module menu 25
  - power-on status 25
  - preinstallation checklist 15
  - removing 23
  - status 25
  - system reliability guidelines 18
- Fibre Channel port status, LED 31
- Fibre Channel switch module
  - cable requirements 7, 49
  - components 14
  - features 2, 9
  - specifications 11, 13
  - standards 10
- field replaceable unit (FRU) 49
- firmware updates 3, 15, 19, 53
- flash patterns, diagnostic, LEDs 33
- format, command-line interface (CLI) commands 40
- front view 27, 28
- functionality, expanding 47

## G

- getting help 57
- guidelines
  - configuration 53
  - handling static-sensitive devices 19

guidelines (*continued*)

- installation 18
- preinstallation checklist 15
- system reliability 18
- troubleshooting 51, 52
- verifying system compatibility 52

## H

- handling static-sensitive devices 19
- handling the I/O module battery 23, 55
- hardware and software requirements 8
- hardware information
  - web site
    - IBM products 3, 4
- hardware requirements 3, 15, 16
  - completing the system installation requirements 5
  - configuration 53
  - replacing the I/O module 49
  - troubleshooting 52, 53
  - verifying system compatibility 52
- hardware service and support 58
- help, getting 57
- host bus adapter (HBA)
  - interconnections with blade server and I/O modules 3, 16
  - internal ports 16
  - network requirements 3, 16
- host bus requirements 3, 15, 16
- hot-swap 18

## I

- I/O module
  - battery, removing 23, 55
  - bay locations 17
  - bay/expansion-card port correlation 17
  - cable requirements 7, 18, 49
  - certifications 13
  - changing passwords 38
  - compatibility statement 17
  - components 14
  - configuration
    - requirements 16
    - through a Telnet interface 35
    - through the Web Tools interface 41
  - CRU identifier 49
  - determining the identifier of 48
  - diagnostic indicators 52
  - enabling 25
  - expanding the functionality of 47
  - fault LED (!) 28, 30, 31, 33
  - features 2, 9
  - front panel 27
  - handling static-sensitive devices 19
  - installation guidelines 18
  - installation requirements 52
  - installing 15, 19
  - interconnections with blade server and expansion card 3, 16

- I/O module (*continued*)
  - login window 38
  - network connection requirements 36, 42
  - network requirements 3, 15, 16
  - OK LED 22
  - operating speeds for internal and external ports 16
  - option-package contents 5
  - parts listing 49
  - ports 27
  - power-on self-test (POST)
    - after installation 21
    - at startup 22
    - completed 22
    - errors 51
    - passed 30
    - running 51
    - status, on management-module menu 25
  - power-on status 25
  - preinstallation checklist 15
  - product registration 4
  - protocols 10, 11
  - removing 23
  - replacing 23, 49
  - running POST 51
  - solving problems 51
  - specifications 10, 12
  - standards 10, 13
  - status 25
  - status LED 28
  - status LEDs 30, 31
  - system reliability guidelines 18
  - system status (OK) LED 21, 30
  - Telnet interface commands 37, 40
  - troubleshooting peripheral devices 53
  - upgrading 47
  - upgrading device drivers, firmware, and BIOS code for 19, 53
  - verifying system compatibility 52
  - Web interface commands 44
  - Web Tools interface 43
  - Web Tools interface window 44
- I/O Module Management window 36, 43
- IBM client reference program, web site 4
- IBM documentation 3, 4, 5, 7
- IBM ServerProven list 18
- IBM Support CD 5, 8
- IBM Support Line 58
- IBM System Information Center web site 4, 7
- identifiers, CRU 49
- important notices 8
- indicators 28
- information panel 27
- installation
  - completing the system installation 5
  - guidelines 18
  - I/O module 21
  - procedure 19
  - requirements 16, 17, 48, 51
    - compatible components 15, 17
    - for expansion card or host bus adapter (HBA) 16

- installation (*continued*)
  - requirements (*continued*)
    - I/O-module bay/expansion-card port correlation 17
    - upgrading device drivers, firmware, and BIOS code 20, 53
    - verifying system compatibility 52
- installing
  - BladeCenter components 52, 53
  - device drivers for operating systems 19, 53
  - expansion card 16
  - host bus adapter 3, 15
  - I/O modules 17, 19
  - optional features 48
  - options 18
- internal devices, enabling 53
- internal loopback mode 32
- internal ports 11
  - on host bus adapter 16
  - operating speeds on I/O module 16
  - specifications 11
- Internet protocol (IP) address
  - compatibility 35, 41
  - connecting to the I/O module 36, 42
  - current configuration, management module 37, 43
  - default, management module 36, 42
  - default, Telnet session 37
  - default, Web session 44
- Internet protocol (IP) subnet 35, 41
- inventory checklist 5

## K

- keywords, using, in commands 40

## L

- labels 14
- LED
  - ! (I/O module fault) 28
  - activities 33
  - colors 22, 29
  - critical alert 30, 31
  - descriptions 30, 31
  - diagnostic flash patterns 33
  - external port diagnostics (!) 32, 33
  - external port status (TX/RX) 31, 32, 33
  - Fibre Channel port status 31
  - Fibre Channel switch fault 31
  - front view 27, 28
  - I/O module fault (!) 30, 31, 33
  - I/O module status 28
  - illustration 27
  - OK
    - activities and diagnostic flash patterns 33
    - description 30
    - enabling the I/O module and its external ports 25
    - illustration 27, 28
    - power-on self-test (POST), after I/O module installation 21
    - power-on self-test (POST), at startup 22

LED (*continued*)

- OK (*continued*)
  - power-on self-test (POST), completed 22
  - port disabled 32
  - state 29
  - switch module status 30, 31
  - system status 27, 28, 31
  - system status (!) (I/O module fault) 31
  - system status (OK) 25, 28, 30, 33
  - system-error 31
- liability, limitation of 62
- license installation, verifying 48
- license key
  - determining the identifier of the I/O module 48
  - obtaining 48
  - purchasing 48
  - web site 48
- limitation of liability 62
- logging on to the management module 36, 42
- logging on to the network 36, 42
- login
  - default password, Telnet session 37, 38
  - default user name, Telnet session 37, 38
  - Web Tools interface 43, 45
- login window
  - Enter Network Password window 36, 42
  - switch module 38
  - Telnet interface 37

## M

machine exchange service 76

machine, exchanging 61

mail-in service 76

Main window, management module 36, 42

major components 14

management methods 12

management module
 

- accessing 25
- Advanced Configuration 37, 43
- bay selection 36, 43
- BladeCenter Management 43
- BladeCenter Management window 37
- BladeCenter Switch Management 43
- BladeCenter Switch Management window 37
- configuration settings 35, 41
- enabling devices and parameters 53
- entering the IP address of the BladeCenter unit
  - management-module interface 36, 42
- establishing a Telnet session 36, 37
- establishing a Web-interface session 42
- Ethernet port 35, 41
- event log 22, 29
- firmware updates 15
- I/O Module Management 43
- I/O Module Management window 36
- logging on 36, 42
- Main window 36, 42
- Management Module Switch Information window 52
- OK LED 20, 30

management module (*continued*)
 

- power-on self-test (POST) status, on
  - management-module menu 25
- turning on the I/O module 25
- upgrading device drivers, firmware, and BIOS code
  - for 19, 53
- Web interface
  - accessing 43
  - accessing the Web interface 43
  - enabling configuration settings 35, 41
  - I/O-module Web Tools interface 43
  - I/O-module Web Tools interface window 44
- Web Tools
  - interface window 43, 44
- Welcome window 36, 42
- Management Module Switch Information window 52
- management workstation 35, 41
- mapping, port 11
- meanings of colors
  - on components 18
  - on LEDs 22, 29, 30
- media access control (MAC) address label 14, 27
- menus, management module, accessing 25
- multi-switch interconnect module (MSIM)
  - documentation 6
  - Fibre Channel I/O-module bay combinations in
    - BladeCenter unit 17
  - installed in BladeCenter unit 17
  - installed in I/O-module bays 8 and 10 17

## N

network connection requirements 36, 42

network password window 36, 42

network requirements 3, 15, 16

next business day service level 76

Node port ID virtualization (NPIV) 1

noncritical errors 51

noncritical failures 52

notes 8

notes, important 80

notices 79
 

- electronic emission 81
- FCC, Class A 81
- in this document 8

notices and statements 8

## O

obtaining a license key 48

OK LED
 

- I/O module
  - activities and diagnostic flash patterns 33
  - description 30
  - enabling the I/O module and its external ports 25
  - illustration 27, 28
  - power-on self-test (POST), after I/O module
    - installation 21
  - power-on self-test (POST), at startup 22
  - power-on self-test (POST), completed 22
- management module 20, 30

- on-site service 76
- online documentation 3, 7
- online product registration 4
- operating-system requirements
  - for upgrading BIOS code for BladeCenter components 19, 53
  - for upgrading device drivers 19, 53
- option-package contents 5
- optional features 2, 9, 47
- options
  - BladeCenter Web site 18
  - configuring 7, 16, 18, 49
  - IBM ServerProven list 18
  - installing 18
- overview
  - preinstallation checklist 15
  - solving problems 51

## P

- parameters, enabling 53
- part number label 14
- part, exchanging 61
- parts listing 49
- password
  - changing 38
- password-change window 38
- password, setting 37
- peripheral devices, troubleshooting 53
- personalized support page, creating 3
- phone numbers 77
- port diagnostics
  - internal loopback mode 32
- port diagnostics (!) LED, external 32, 33
- port disabled 32
- port mapping 11
- port status (TX/RX) LED, external 31, 32, 33
- ports
  - external
    - enabling 25
    - location 27
    - operating speeds on I/O module 16
    - remote access 35, 41
  - identification 27
  - internal
    - on host bus adapter 16
    - operating speeds on I/O module 16
- POST
  - failure 31
  - in progress 30
- power LED on power module, in BladeCenter unit 20, 30
- power-on indicator 28, 30, 33
- power-on self-test (POST)
  - at startup 22
  - completed 22
  - error log 29, 30
  - errors 51
  - I/O module passed 30
  - normal 21, 29
  - results 51

- power-on self-test (POST) (*continued*)
  - running 51
  - specifications 11
  - status, on management-module menu 25
- power-on status, I/O module 25
- preinstallation checklist, I/O module 15
- product
  - information table 4
  - information, obtaining from IBM Web site 3
  - name label 14
  - registration Web site 4
- protocols, Fibre Channel 11
- publications, related 5
- purchasing a software license 48

## R

- registration, product 4
- regulatory certifications 13
- related documentation 5, 7
- removing
  - acoustic attenuation module 20
  - I/O module 23
  - I/O module battery 23, 55
- replaceable components 49
- replacing the I/O module 23, 49
- requirements
  - establishing a Telnet session
    - through a terminal emulator program 37
    - through the management module 36, 37
  - establishing a Web-interface session
    - through a Web browser 44
    - through the management module 42
  - external Ethernet-port connection 35, 37, 41
  - firmware updates 15
  - hardware 3, 8, 15, 16
    - completing the system installation requirements 5
    - configuration 53
    - troubleshooting 52, 53
    - verifying system compatibility 52
  - hardware and software 8
  - installation 17, 18, 19
  - preinstallation checklist 15
  - software 8, 19, 53
- running POST 51

## S

- safety certification label 14
- safety standards 13
- safety, I/O module battery 23, 55
- same business day service level 77
- same day service level 77
- security certificate check window 43
- serial number
  - label 14
  - location of 14
- ServerProven list, IBM 18
- service
  - classes, Fibre Channel 11



- service levels 76
- session, starting 25
- size 12
- small form-factor pluggable plus (SFP+) modules 3, 11, 22
- software features 47
  - specifications 9
- software information
  - web site
    - BladeCenter products 4
    - Brocade Fabric OS 7
    - IBM products 4
- software license requirements 48
- software requirements 19, 53
- software service and support 58
- solving problems 51
- specifications
  - dimensions 12
  - electrical standards 13
  - emissions standards 13
  - environmental 12
  - fabric management 12
  - Fibre Channel protocols 11
  - Fibre Channel standards 10
  - I/O module 10
  - parts listing 49
  - safety standards 13
  - software features 9
- standards
  - electrical 13
  - emissions 13
  - Fibre Channel 10
  - I/O module 10
  - safety 13
- starting a session
  - through a Telnet interface 37
  - through the Web interface 42, 43
- starting a Web-interface session 25
- statements and notices 8
- static-sensitive devices, handling 19
- status
  - I/O module 25, 28
  - power-on self-test (POST), on management-module menu 25
  - power-on, for I/O module 25
- storage area network (SAN) 2
- subnet masks 35, 41
- support CD 5, 8
- support page, personalized, creating 3
- support, web site 57
- supported I/O modules 17
- switch beaconing 32
- switch fault (!) LED 28, 30, 31, 33
- switch module
  - battery, removing 23, 55
  - bay/expansion-card port correlation 17
  - cable requirements 7, 18, 49
  - certifications 13
  - changing passwords 38
  - compatibility statement 17
  - components 14

- switch module (*continued*)
  - configuration
    - requirements 16
    - through a Telnet interface 35
    - through the Web Tools interface 41
  - CRU identifier 49
  - determining the identifier of 48
  - diagnostic indicators 52
  - expanding the functionality of 47
  - features 2, 9
  - handling static-sensitive devices 19
  - I/O-module bay locations 17
  - installation guidelines 18
  - installing 15, 19
  - interconnections with blade server and expansion card 3
  - login window 38
  - network requirements 3, 15
  - parts listing 49
  - POST errors 51
  - preinstallation checklist 15
  - product registration 4
  - protocols 10, 11
  - removing 23
  - replacing 23, 49
  - solving problems 51
  - specifications 12
  - standards 10, 13
  - status LED 28
  - system reliability guidelines 18
  - upgrading 47
- switch module status LED 30, 31
- switch system log 22, 29
- syntax for commands 40
- system compatibility, verifying 52
- system information and configuration requirements 16
- System Information Center web site 4, 7
- system log 22, 29
- system reliability 18
- system status (!) (I/O module fault) LED 30, 31, 33
- system status (OK) LED 30, 33
  - at startup 30, 33
  - power-on self-test (POST), after I/O module installation 21
  - power-on self-test (POST), at startup 22
  - power-on self-test (POST), completed 22
- system-error LED 28, 31, 33
- system-status LED 27, 28, 30, 31

## T

- tasks, troubleshooting 52
- telephone numbers 58
- Telnet
  - command-line interface window 38
  - password-change window 38
  - switch module login window 38
- Telnet interface
  - changing passwords 38
  - Command Line Interface Shell 37
  - command-line interface (CLI) documentation 40

- Telnet interface *(continued)*
  - command-prompt window 38
  - commands 37
  - configuration settings 35
  - configuring the I/O module 35
  - connecting to the I/O module 36
  - format, command-line interface (CLI) commands 40
  - interface 35
  - password, setting 37
  - starting a session 37
  - syntax for commands 40
  - using keywords in commands 40
  - using the Backspace and Delete keys with commands 40
- Telnet session, establishing
  - through a terminal emulator program 37
  - through the management module 36, 37
- terminal emulator program, using, to establish a Telnet session 37
- Tier 1 CRU 49
- Tier 2 CRU 49
- timeout value 36, 42
- trademarks 79
- troubleshooting
  - checklist
    - enabling devices and parameters 53
    - hardware problems 52
    - installation of BladeCenter components 52, 53
    - peripheral devices 53
    - power-on self-test (POST) errors 51
    - running power-on self-test (POST) 51
    - software problems 53
    - system-configuration problems 53
    - upgrading device drivers, firmware, and BIOS code for BladeCenter components 19, 53
    - verifying system compatibility 52
  - installation of BladeCenter components 52
  - reference documentation 51, 53
  - software problems, during system installation 19
- TX/RX (external port status) LED 31, 32, 33

## U

- United States electronic emission Class A notice 81
- United States FCC Class A notice 81
- updates, documentation 7
- updates, firmware and documentation 3
- upgrading
  - device drivers
    - for BladeCenter components 19, 53
  - firmware and BIOS code for BladeCenter components 19, 53
  - I/O module 47
  - switch module 48
- using keywords in commands 40
- using the Backspace and Delete keys with commands in the Telnet interface 40
- using the Web Tools interface 41

## V

- verifying system compatibility 52
- viewing POST results 51

## W

- warranty service type 75
- warranty service, obtaining 61
- warranty terms, country-unique 63
- Web interface
  - accessing 43
  - commands 44
  - configuration settings 41
  - configuring the I/O module 41
  - connecting to the I/O module 42
  - security certificate check window 43
  - session
    - establishing through a Web browser 44
    - establishing through the management module 42
  - starting a session 42, 43
  - using the management module 41, 42
  - using the Web Tools interface 41
- web site
  - BladeCenter documentation 4
  - Brocade documentation 7, 11
  - cable requirements 7, 18, 49
  - compatible BladeCenter optional devices 18
  - Configuration and Options Guide 7, 18, 49
  - configuration requirements for the I/O module and BladeCenter unit 16
  - creating a personalized support page 3
  - directory of worldwide contacts 77
  - documentation updates 7
  - firmware and documentation updates 3
  - hardware information
    - BladeCenter products 4
    - IBM products 3, 4
  - IBM client reference program 4
  - IBM product information 3
  - IBM ServerProven list 18
  - IBM System Information Center 4, 7
  - license key for optional feature 48
  - product registration 4
  - publication ordering 57
  - software information
    - BladeCenter products 4
    - Brocade Fabric OS 7
    - IBM products 4
  - support 57
  - support line, telephone numbers 58
  - support telephone numbers 48
  - supported device drivers and utilities 19, 53
- Web Tools
  - interface window 43, 44
  - management methods 12
- Web Tools interface
  - configuration settings 41
  - configuring the I/O module 41
  - documentation 7
  - login 43, 45



- Web Tools interface security certificate check window 43
- Web-interface session, starting 25
- Welcome window 36, 42
- window
  - BladeCenter Management 43
  - BladeCenter Management window 37
  - BladeCenter Switch Management 43
  - BladeCenter Switch Management window 37
  - Command Line Interface Shell 37, 38
  - command-prompt 38
  - I/O Module Management 43
  - I/O Module Management window 36
  - login
    - Enter Network Password window 36, 42
    - Telnet interface 37, 38
    - Web Tools interface 43, 45
    - Welcome window 36, 42
  - Main window, management module 36, 42
  - Management Module Switch Information window 52
  - Web Tools interface security certificate check window 43
- worldwide name (WWN) 4







Part Number: 44R5239

Printed in USA

(1P) P/N: 44R5239

