



TM1 Technical Bulletin

Installing PDFcamp Drivers on an x64 Windows System

Date: April 13, 2007

Relevant TM1 Versions: TM1 9.1 SP2

This technical bulletin describes how to obtain and install third-party PDF drivers if you are running the 32-bit versions of TM1 Perspectives or TM1 Web on an x64 Windows system and want to export to PDF from TM1.

Obtaining the PDF Driver Installation

If you are running the 32-bit versions of TM1 Perspectives or TM1 Web on an x64 Windows system and want to export to PDF from TM1, you will need to manually install the third-party PDF drivers. The TM1 x86 installation does not install and configure the PDF drivers on an x64 system.

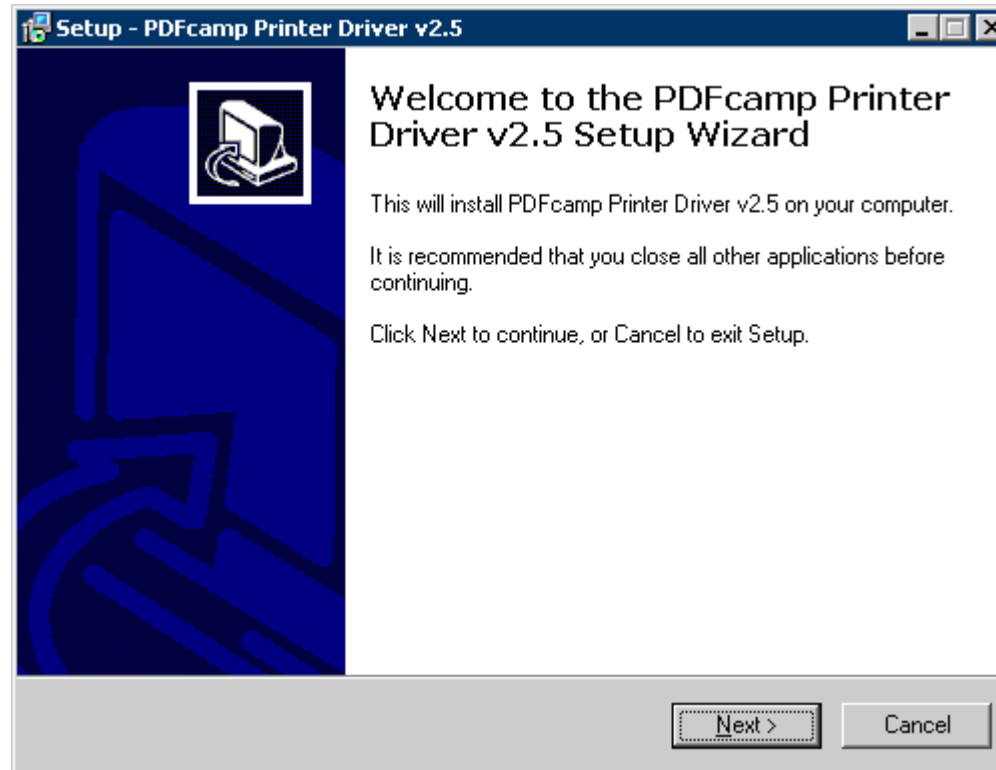
Contact Applix Customer Support to obtain the appropriate PDF driver installation to configure TM1 to export to PDF in this configuration.

Running the Installation

After obtaining the required driver installation from Applix Customer Support, install the driver using the default options in the installation wizard as follows:

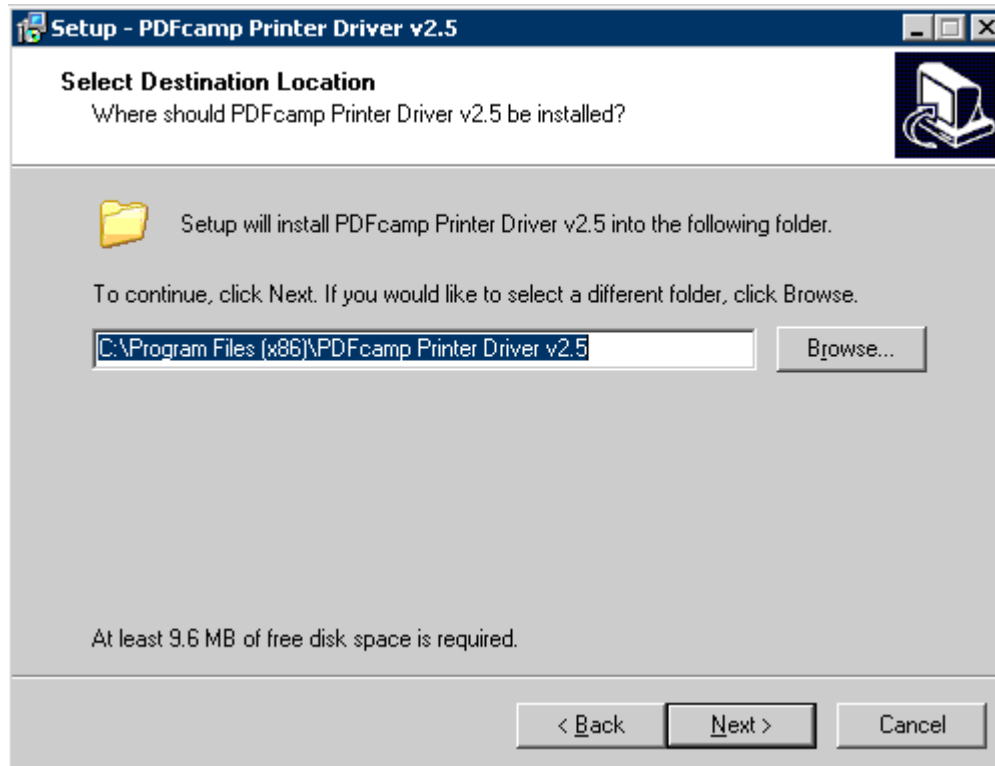
1. Run the installation, pdfcamp_printer_driver_setup.exe.

The installation welcome screen appears.

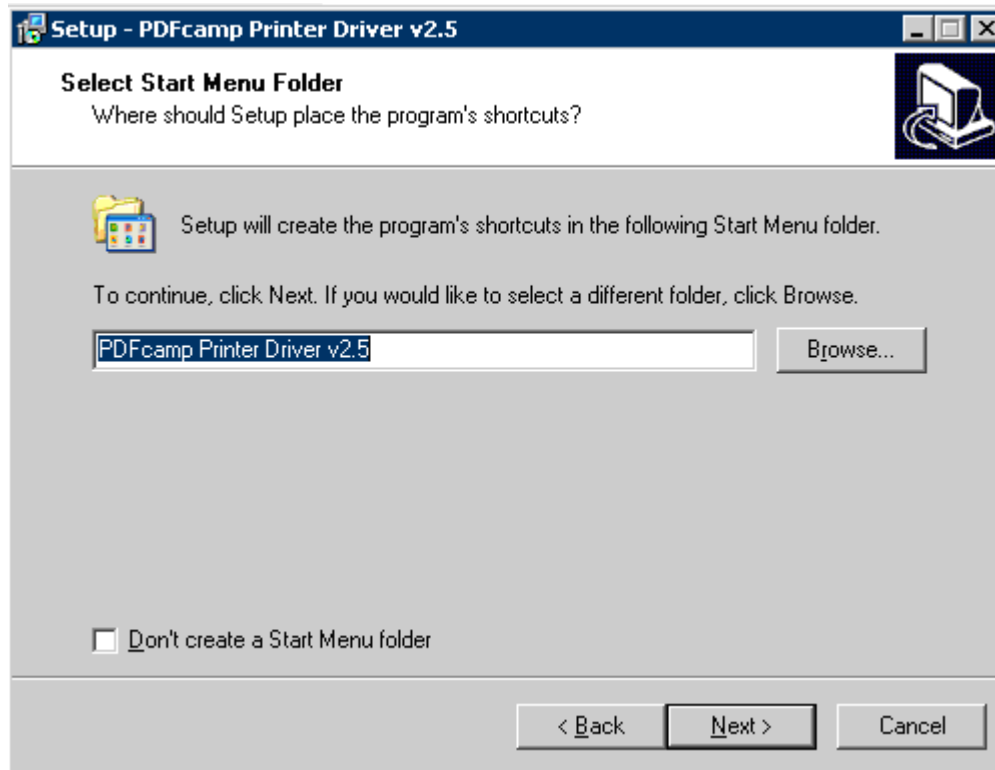


2. Click **Next** to continue.

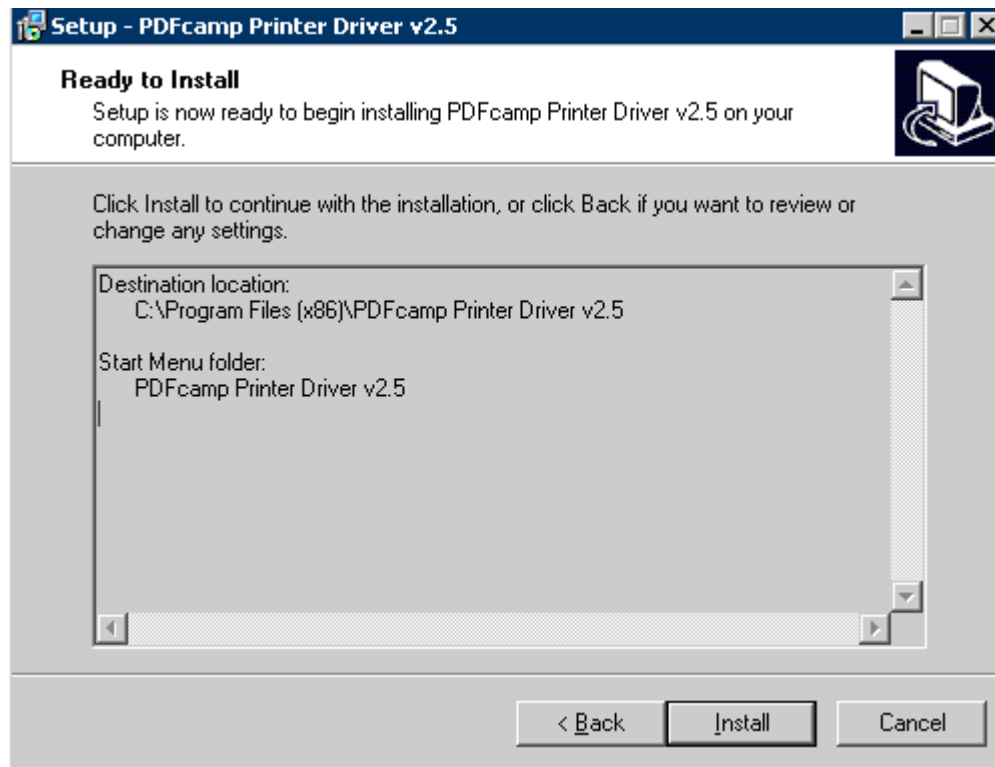
The Select Destination Location screen appears.



3. Accept the default destination location and click **Next**.
The Select Start Menu Folder screen appears.

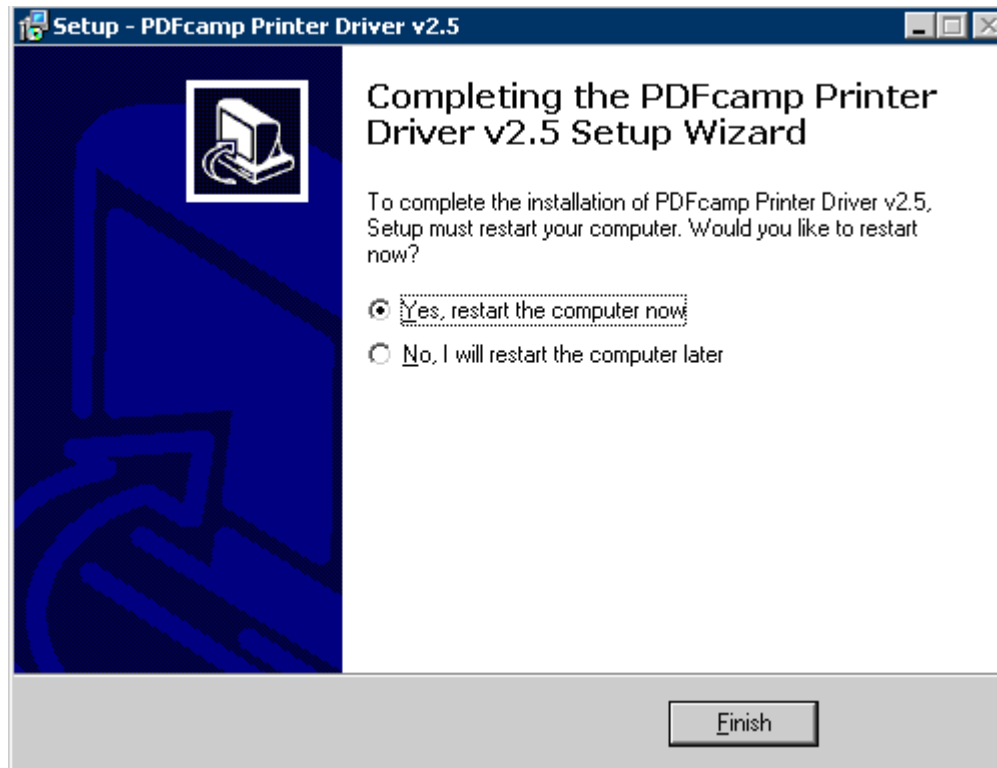


4. Accept the default menu name and click **Next**.
The Ready to Install screen appears.



5. Click **Install**.

The final installation screen appears.



6. Keep the Yes, restart the computer now option selected.
7. Click **Finish** to complete the installation and restart your computer.