



# TM1 Technical Bulletin

## Configuring TM1 Web to Run without Using Excel

Date: February 2, 2007

Relevant TM1 Versions: 9.1

This technical bulletin describes how to configure TM1 and TM1 Web to run without requiring Microsoft Excel (or the TM1ExcelService Windows service) on the Web server.

This method for running TM1 Web should be considered only for sites where running Excel on the Web server is prohibited.

### Editing the Tm1s.cfg File

To enable TM1 and TM1 Web to run in the absence of Excel on the Web server, you must add a single parameter to the Tm1s.cfg file:

```
ExcelWebPublishEnabled=T
```

When this parameter is enabled, Excel files in TM1 applications are no longer automatically published to TM1 Web; you must explicitly publish all Excel files to TM1 Web to make the files available as Websheets.

Also, while the procedure to export Websheets and Cubeviewers from TM1 Web remains unchanged, the resulting output will vary significantly from the output generated when Excel is available on the Web server.

---

## Managing Excel Files in TM1 Applications

When ExcelWebPublishEnabled=T is set in Tm1s.cfg, you must explicitly publish all Excel files in TM1 applications to TM1 Web if you want the Excel files to be available as TM1 Websheets. Similarly, any time you change an Excel file that has been previously published to TM1 Web, you must republish the file to make the changes available in the Worksheet.

There are several methods for publishing Excel files to TM1 Web. You can:

- Simultaneously add an Excel file to an application and publish to TM1 Web
- Publish individual Excel files that exist within an application to TM1 Web
- Publish all Excel files within an application to TM1 Web

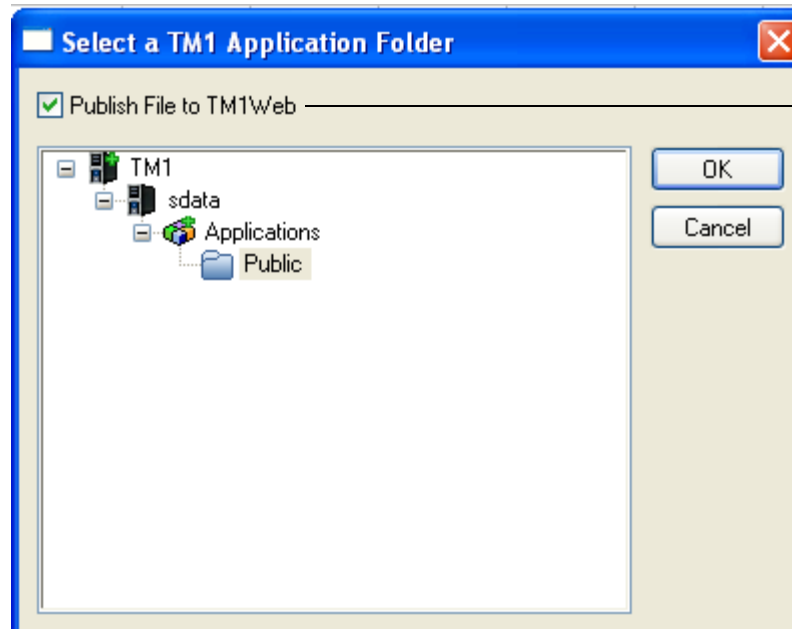
### Simultaneously Adding an Excel File to an Application and Publishing to TM1 Web

When you initially add an Excel file to an application, you can choose to simultaneously publish the file to TM1 Web.

There are two ways to add an Excel file to an application: you can right-click an application and choose **Add File** or you can choose **TM1** → **Save Workbook on TM1 Server**. Regardless of which method you use, TM1 presents an option to publish the file to TM1 Web while adding the file to an application.



Option available when you choose **TM1** → **Save Workbook on TM1 Server**.

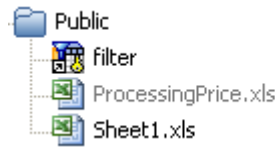


Option available when you right-click an application and choose **Add File**.

Select the option to publish the file to TM1 Web. Clear the option to add the file to the application but **not** publish to TM1 Web.

## Publishing an Individual Excel File to TM1 Web

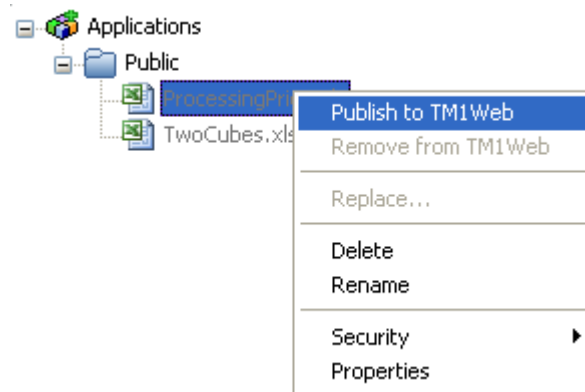
If an Excel file has been added to an application but has not yet been published to TM1 Web, the filename appears in grey text. Such files must be published to TM1 Web before they can be viewed as Websheets.



Grey text indicates that this file has not been published to TM1 Web.

To publish an individual Excel file from an application to TM1 Web:

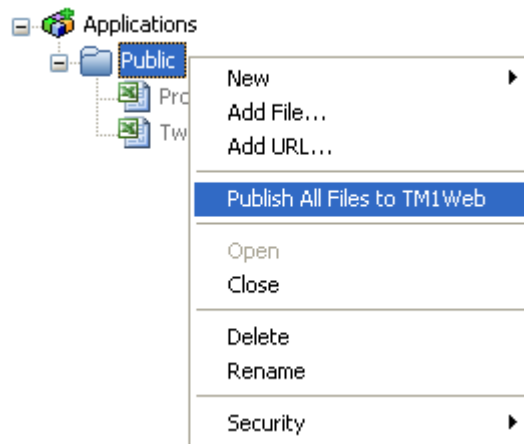
1. Right-click the file.
2. Select **Publish to TM1 Web**.



## Publishing all Excel Files Within an Application to TM1 Web

To publish all Excel files within an application to TM1 Web:

1. Right-click the application folder containing the files you want to publish.
2. Select **Publish All Files to TM1 Web**.



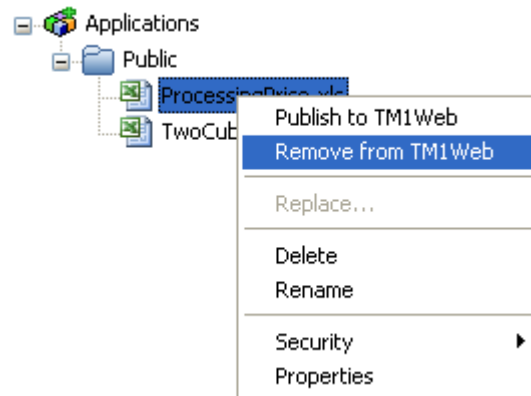
All Excel files in the application, including those in sub-applications, are published to TM1 Web.

## Deleting an Excel File from TM1 Web

You can also delete an Excel file that has previously been published to TM1 Web. When you delete an Excel file from TM1 Web, the Worksheet is no longer available in TM1 Web but the source Excel file remains in the TM1 Application.

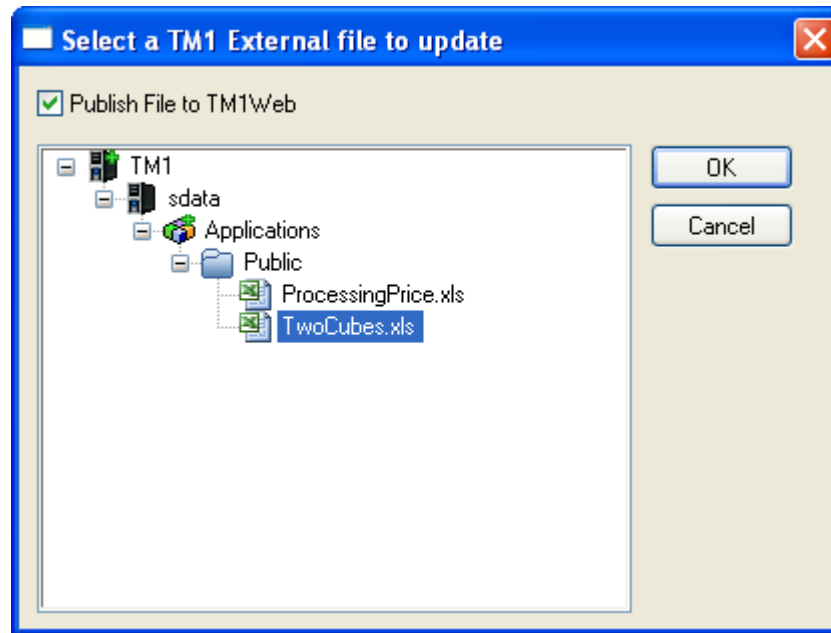
To delete a file from TM1 Web:

1. Right-click the file.
2. Select **Remove from TM1 Web**.



## Updating Excel Files in TM1 Applications

When you choose TM1 → Save Workbook on TM1 Server → Update Existing Application File on TM1 Server to update an Excel file that has previously been published to TM1 Web, you can select the **Publish File to TM1 Web** option to simultaneously publish the file to TM1 Web.



**NOTE:** If you update an Excel file that has previously been published to TM1 Web, but *do not* select the **Publish File to TM1 Web** option, the file in the application will differ from the file available in TM1 Web. There is no visual indication in the Server Explorer to alert you that a file has been updated in an application but has not been republished to TM1 Web.

## Exporting TM1 Web CubeViewers/Websheets

The procedure for exporting TM1 Web Cubeviewers and Websheets remains unchanged when Excel is not present on the Web server.

1. Click **Export** .
2. Select an export format:

- 
- **Slice to Excel**
  - **Snapshot to Excel**
  - **Export to PDF**
3. Complete the procedure for exporting Cubeviewers and Websheets as described in “Generating a Report from a Websheet” in the *TM1 Users Guide*.

### **Cubeviewer Export Limitations**

When you export a Cubeviewer using either the **Slice to Excel** or **Snapshot to Excel** options, any charts present in the Cubeviewer are not exported to the resulting worksheet.

### **Websheet Export Limitations**

When Excel is not present on the Web server, the following limitations apply to exporting a Websheet.

#### **Slice to Excel/Snapshot to Excel**

- OLE controls present in the Websheet are converted to images
- Layout may be inconsistent between the Websheet and the resulting Excel worksheet/workbook.
- Headers and footers in the Worksheet are not exported
- Form control states are not updated/displayed in the resulting worksheet



---

## Export to PDF

- Images present in the Websheet are not exported
- Charts present in the Websheet are exported to a separate page in the resulting PDF file
- OLE and form controls are not exported
- Headers and footers are not exported

