
TM1 Technical Bulletin

Using Excel Names with the TM1 Action Button

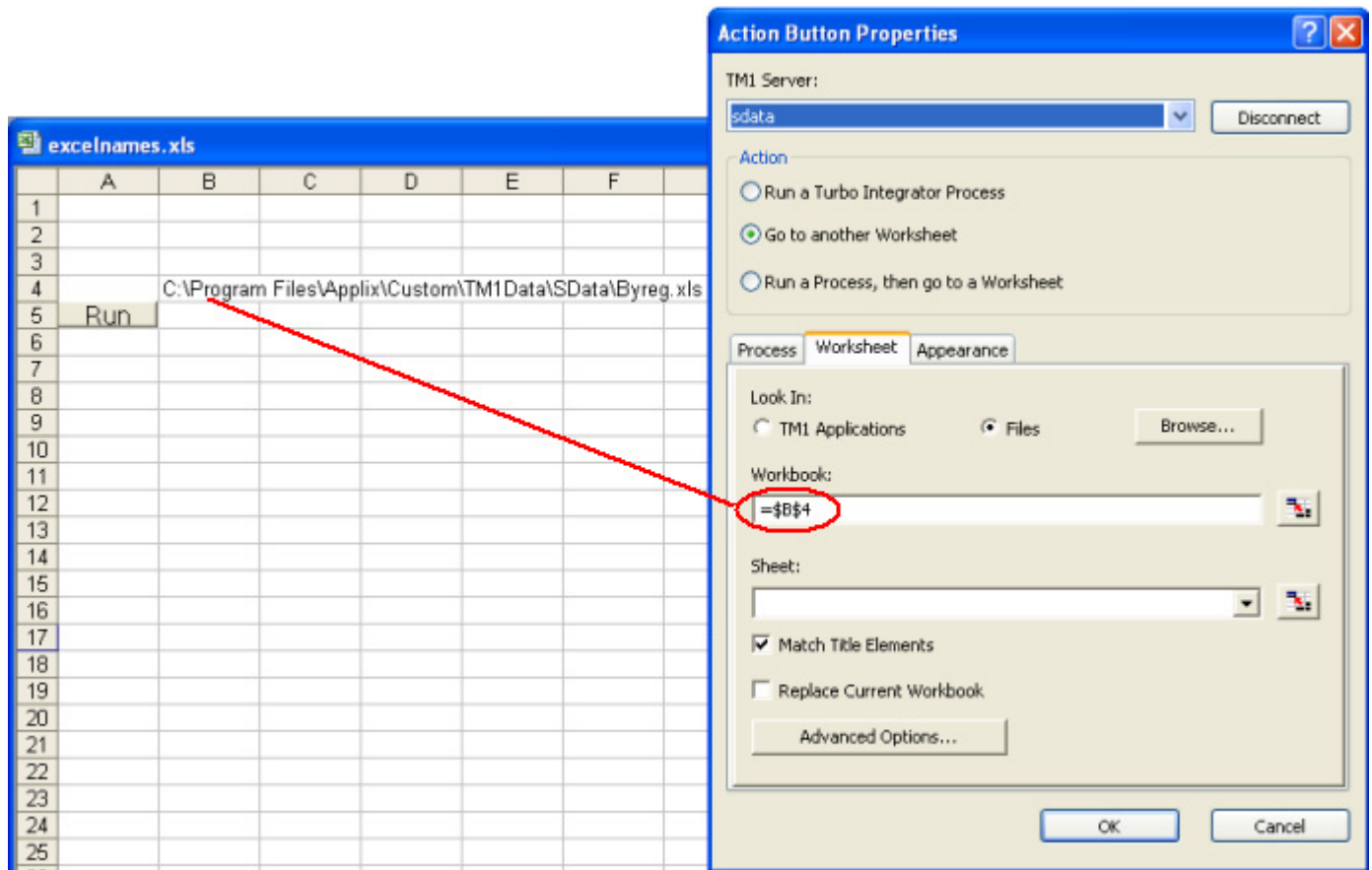
Date: March 16, 2007

Relevant TM1 Versions: 9.1 and later

This technical bulletin describes best practices for using cell references when configuring a TM1 Action button.

Issue

You can use cell references to set properties for a TM1 Action button. For example, when configuring an Action button to open another workbook, you can use a cell reference to specify the book to be opened. In the following image, the Action Button Properties dialog box is configured to open a workbook using the path stored in cell B4.



You can similarly use cell references to configure an action button to open a specific worksheet or to supply parameters for a TurboIntegrator process.

Problems arise, however, when you insert or delete rows/columns in a worksheet that includes an **Action** button that is configured to use cell references. The **Action** button does not automatically update cell references to accommodate such changes in worksheet structure, so the button will fail to execute the desired action after the worksheet is modified.

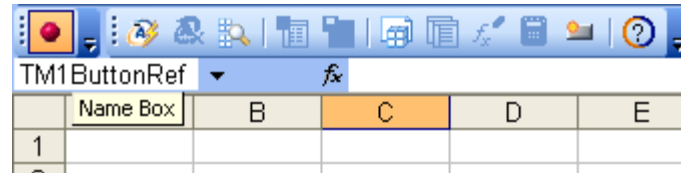
Recommendations

Applix recommends assigning Excel names to cells that are referenced by a TM1 Action button, and then configuring the button to use the Excel names.

To assign an Excel name to a cell that is referenced by an Action button:

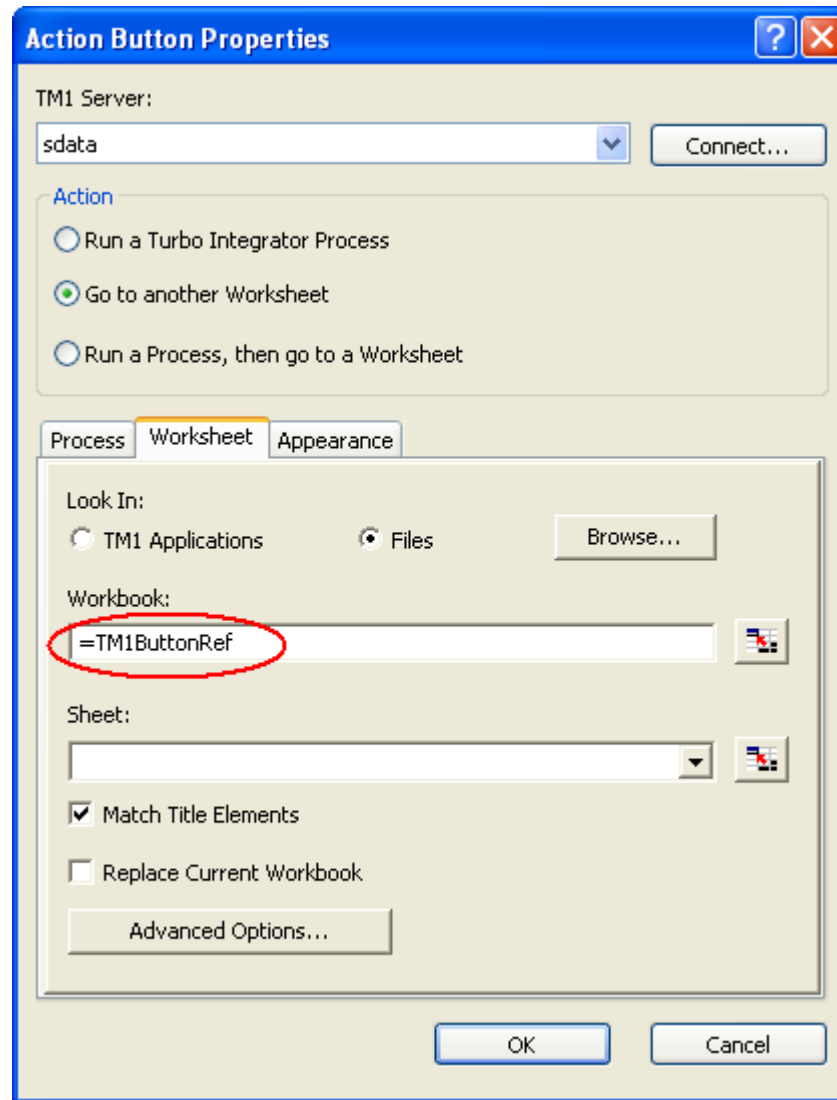
1. Select the cell in Excel.
2. Type a name for the cell in the Excel Name Box and press **ENTER**.

The Name Box is located at the left end of the Excel Formula Bar.



To configure the Action button to use an Excel name:

1. Open the Action Button Properties dialog box.
2. Enter the Excel name in place of a regular cell reference where necessary.



3. Click **OK**.