



Release Notes

Applix TM1

TM1 9.0 SP2 Release

SAP Certified
Integration



In This Release

This document contains information important to TM1 customers. The following information is provided:

- **TM1 9.0 SP2 Platform Support**
- **Language Support Statement**
- **Important Installation Notes**
- **New Features of TM1 9.0 SP2**
- **Documentation Updates**
- **Known Issues in TM1 9.0 SP2**
- **Fixed Issues in TM1 9.0 SP2**

Later sections of this document describe fixed issues and new functionality in previous releases of TM1 9.0. All of the new functionality and all of the fixed customer issues from previous TM1 releases are included in TM1 9.0 SP2.

TM1 9.0 SP2 Platform Support

The following table provides a partial description of platform support for the TM1 9.0 SP2 release. A complete platform support matrix is available [on the Applix Web site](#).

TM1 9.0 SP2	Operating Systems (Clients)		Web Browser	Operating Systems (Servers)						Web Servers	Databases		Languages		
	Windows 2000 (Intel 32-bit)	Windows XP (Intel 32-bit)	Internet Explorer 6.x ²	Windows 2000 Advanced Server (Intel 32-bit) ⁸	Windows 2003 R2 (Intel 32-bit)	Windows 2003 R2 x64 ⁶ (64-bit)	Windows 2003, (64-bit Intel Itanium II)	Solaris 10 Sparc (64-bit)	HP-UX 11i PA Risc (64-bit)	IIS (ASP) V5 & V6 32-bit only	MS SQL 2005	Oracle 8.1.7/ 9.0.2	English (US)	German ⁷	French ⁷
TM1															
TM1 Server				✓	✓	✓	✓	✓	✓				✓	✓	✓
Turbo Integrator				✓	✓	✓	✓	✓	✓		✓	✓	✓	✓	✓
Architect/ Perspectives ¹	✓	✓											✓	✓	✓
SAP B/W ODBO Connector ³				✓	✓								✓	✓	✓
SAP RFC Connector ⁴				✓	✓	✓	✓	✓	✓				✓	✓	✓
TM1 Web ⁵	✓	✓	✓	✓	✓					✓			✓	✓	✓
TM1 Applications															
Planning Manager	Same as TM1 Support												✓	✓	✓
Financial Reporting													✓		
Consolidations													✓		

Notes:

1. Requires Excel 2000 or higher.
2. Version 6.0 or higher recommended. (Microsoft no longer actively supports IE 5.5. If you are running TM1 Web on IE 5.5 and experience issues that are browser version related, Applix will make a reasonable effort to address these issues. Please note, however, that these efforts may be limited by the support available through Microsoft. Known issues with IE 5.5 are documented in the Known Issues section of these release notes. Support for IE 5.5 will be discontinued in the next major TM1 release).
3. SAP BW support requires SAP 6.4.0 GUI with patched 3.5.1.563 dll.
4. SAP BW 3.5.x supported. You need to download the SAP RFC files from SAP (please see SAP Tech Bulletin for more info).
5. Requires Excel 2002 or higher on the Web Server (2003 recommended).
6. We support Windows 2003 R2 x64 on the Microsoft supported processors. Microsoft lists support for AMD Opteron, AMD Athlon 64, Intel Xeon with EM64T, and Intel EM64T (see MS site <http://www.microsoft.com/windowsserver2003/64bit/x64/editions.mspx>).
7. Applix tests and supports only single-language, single-locale configurations of the TM1 system. That is, all software components – client and server operating systems, version of Excel, version of TM1, browser, etc. are set to the same language and locale (e.g., US English, UK English, French FR). If these conditions are not valid, for example if client settings are different from server settings, some problems may be manifested. Applix will make best efforts to fix such issues related to mixed language environments in subsequent service packs and releases.
8. Windows 2000 is in Microsoft extended support. Applix will make a best effort to address any issues but may be limited by the support available through Microsoft. Applix will no longer be testing Windows 2000 Advanced Server as of the next minor TM1 release (i.e. TM1 9.1).

Platform Support Notes

In addition to the platform support matrix, administrators installing TM1 products should note the following:

TM1 Perspectives/Architect

- TM1 Perspectives requires Microsoft Excel 2000 or higher.

TM1 Web

- TM1 Web can be installed and delivered on IIS Web server versions 5 or 6, 32-bit only.
- Applix recommends running the TM1 Web client on Microsoft Internet Explorer 6.0 or higher.

Microsoft no longer supports IE 5.5. If you are running TM1 Web on IE 5.5 and experience issues that are browser-version related, Applix will make a reasonable effort to address these issues. Please note, however, that these efforts may be limited by the support available through Microsoft. Applix strongly recommends that you run TM1 Web with IE 6. Known issues with IE 5.5 are documented in the [Known Issues](#) section of these release notes.

- Microsoft Excel 2002 Or 2003 must be installed on the web server used to deliver TM1 Web; Applix strongly recommends Excel 2003. If one of these versions of Excel is not present on the web server, you cannot access Websheets in TM1 Web.

Excel Version and Service Packs

- Applix tests TM1 using the latest Excel Service Pack, currently Excel 2003 SP2.

TurboIntegrator

- TurboIntegrator connectivity with SAP BW via ODBO requires version 6.4 of the SAP GUI, and version 3.5.1.563 of the SAP BW OLE DB Provider, and version 3.1 Patch Level 15 of SAP BW.

If connecting to SAP via RFC, a TM1-specific interface must be installed. For details, please contact Applix support.

- TurboIntegrator processes support OLE DB 2.6 and later.

X64 Support and Installation

Applix supports the TM1 server running on Windows 2003 x64 systems in the following configurations:

- TM1 64-bit server running on x64 machine.

This server can communicate with TM1 clients on the same machine (running in WOW64) or on other distinct machines.

Use the TM1 x64 installation to install the 64-bit TM1 Server.

Use the TM1 x86 installation to install the 32-bit TM1 client components, such as TM1 Architect and TM1 Web.

- TM1 32-bit server running in WOW64 on x64 machine. This server can communicate with TM1 clients on the same machine (running in WOW64) or on other distinct machines. Use the TM1 x86 installation to install both the 32-bit server and clients.

Excel Feature Support in TM1 Web

Applix publishes a document detailing the support for various Excel features in TM1 Web. This document, TM1 Web Feature List.doc, is available on the Applix Website under [Service & Support >> Download – Docs](#).

The purpose of this document is to provide Applix customers a way to identify differences between TM1 Web and Excel when importing Excel spreadsheets to TM1 Web and when exporting TM1 Websheets and Cube Viewer charts to Excel. These differences primarily appear in charts, although other exceptions are noted in the document.

Language Support Statement

TM1 9.0 SP2 is available in English, French, and German.

Applix tests and supports only single-language, single-locale configurations of the TM1 system. That is, all software components – client and server operating systems, version of Excel, version of TM1, browser, etc. are set to the same language and locale (e.g., US English, UK English, French FR). If these conditions are not valid, for example if client settings are different from server settings, some problems may be manifested. Applix will make best efforts to fix such issues related to mixed language environments in subsequent service packs and releases.

Technical Documentation Statement

Applix makes every effort to ensure that the French and German versions of Applix technical documentation match the English documentation in content and meaning. In cases where the French and German technical documentation does not match the English documentation, the English documentation should be considered definitive.

End-of-Life Statements

- The in-process local server is not supported beyond the 8.4.x releases.
- TM1 Integra is not supported in TM1 9.0. The TM1 installation has been modified to remove Integra from the list of available products.
- Windows 2000 Advanced Server will not be supported beyond the 9.0 releases.
- Internet Explorer 5.5 will not be supported beyond the 9.0 releases.

Important Installation Notes

This section includes the latest information about installing TM1. This information should be used in addition to the information provided in the TM1 Installation Help that is available when installing TM1.

Important Note about Upgrading from a Previous Installation of TM1


CAUTION: The TM1 Installation Wizard may not be able to detect or prompt you about older versions of TM1 on your computer and could possibly over write your existing files. This is especially true if you are upgrading from TM1 x64 version 9.0 SP1 to TM1 x64 version 9.0 SP2.

You *must* manually backup your TM1 data and then uninstall any previous version of TM1 *before* installing TM1 9.0 SP2 as follows.

- Make a copy of your existing <Applix_Home>\Custom\ directory.
This directory contains TM1 files and applications which you may have created or modified. The default location of this directory is C:\Program Files\Applix\Custom.
- Uninstall the previous version of TM1 using the Add/Remove Programs tool available in the Windows Control Panel.

For more details, see the sections “Before You Install” and “Uninstalling TM1” in the TM1 Install Help, available from the TM1 Installation Wizard.

The following table summarizes the general scenarios and installation behavior when upgrading to TM1 9.0 SP2.

Upgrade Path	Installation Summary
From 9.0 SP1	The following message will display, reminding you to first backup your TM1 data and then uninstall. 

Upgrade Path	Installation Summary
From 9.0, 8x and earlier	<p>The installation may or may not detect that a previous version of TM1 exists on your computer.</p> <p>Manually backup your TM1 data and uninstall any previous versions.</p>
From x64 9.0 SP1 to x64 9.0 SP2	<p>The installation will <i>not</i> prompt you if a previous version of TM1 is found on your computer.</p> <p>Manually backup your TM1 data and uninstall any previous versions.</p>

TM1 Web Installation Now Detects and Backs-up Previous Versions of TM1 Web (311009, 315012)

When upgrading to TM1 Web 9.0 SP2, the TM1 installation now checks to see if a previous version of TM1 Web is installed on your computer. If detected, the installation renames your old TM1 Web program directory to keep it separate from the new version being installed.

The TM1 Web program directory contains all the TM1 Web program files and any custom TM1 Web server pages you may have created. The default location of this directory is C:\inetpub\wwwroot\TM1Web.

NOTE: You still have to manually backup your standard TM1 data as described in the previous section.

Previous TM1 Web Directory is Renamed

The installation checks for the existence of a directory with the identical name of the TM1 Web directory that you specify during installation. If a matching TM1 Web directory exists, then the installation backs-up the old directory by renaming it with the naming convention, TM1Web.x.

For example, if you accept the default installation directory, the TM1 Web files are installed to C:\inetpub\wwwroot\TM1Web. If this directory is detected when you perform an upgrade, it is renamed to TM1Web.1, and the upgraded files are installed to C:\inetpub\wwwroot\TM1Web.

After installation, C:\inetpub\wwwroot\ now contains two directories:

- TM1Web - Contains the new TM1 Web pages.
- TM1Web.1 - Contains your old TM1 Web pages, including any customizations you may have created.

If a backup directory already exists, for example TM1Web.1, the installation will automatically increment the number by one and create TM1Web.2.

If you are upgrading from a 9.x version of TM1 to another 9.x version, you can copy any customized pages from TM1Web.1 to TM1Web. After copying the pages, the customizations will be available in your upgraded version of TM1 Web.

NOTE: If you are upgrading from an 8.x version of TM1 to a 9.x version, DO NOT copy any customized pages from TM1Web.1 to TM1Web. TM1 Web 8.x pages are not compatible with TM1 Web 9.x. You must manually recreate your customizations in the new TM1 9.x pages.

Troubleshooting the TM1 Web Installation

In some situations, the TM1 Installation Wizard may be unable to automatically backup your previous version of TM1 Web. If you experience this problem, the installation prompts you to do one of the following.

- Stop any Windows services or programs that may be locking the TM1 Web files.

A program that is currently running may be preventing the Installation Wizard from successfully renaming your previous TM1 Web directory. Close any services, such as IIS or ASP.NET, or programs, including Windows Explorer, that are currently running and then try to continue the installation.

- Select a different installation directory for the new TM1 Web files.

If you specify a different installation directory for the new TM1 Web files, then the installation will leave any previous TM1 Web files in their existing directory. After selecting a new location, the installation checks your selection and appends \TM1Web to it, if the new directory does not already include it. The installation will also update the TM1 Web virtual directory on your IIS Web server to point to this new location.

After completing one of the above options, continue the installation.

NOTE: If the installation is cancelled or cannot be completed after the installation has renamed your previous TM1 Web directory, then that directory is not rolled back to its original name. You will have to manually rename your old TM1 Web directory if you do not complete the installation and still want to use your previous TM1 Web files.

TM1 Web Requires Microsoft ASP.NET Framework 1.1

Applix TM1 Web requires the Microsoft ASP.NET Framework 1.1, along with the .NET Framework 1.1 Service Pack 1, to be installed on the Web server used to deliver TM1 Web.

IMPORTANT: TM1 9.0 SP2 does not support the ASP.NET Framework 2.0.

You can download and install the .NET Framework 1.1, along with the 1.1 Service Pack 1, from the Microsoft Web site:

<http://www.microsoft.com/downloads/results.aspx?pocId=&freetext=.net%20framework&DisplayLang=en>

To ensure that the .NET Framework 1.1 is properly installed and registered on your computer, perform these steps:

1. Manually register the Microsoft ASP.NET Framework 1.1 by opening a Command Prompt window and changing to the following directory:

C:\windows\Microsoft.NET\Framework\v1.1.4322

2. Execute the following command:

aspnet_regiis.exe -i

If you do not perform the previous steps, or for some reason the Microsoft ASP.NET Framework 1.1 is installed but not registered on your computer, you may receive the following error when installing TM1:



If you experience this error, follow these steps to correct the error and successfully install TM1:

1. Uninstall TM1 using Add/Remove Programs in the Windows Control Panel.
2. Manually register the Microsoft ASP.NET Framework 1.1 as explained above.
3. Run the TM1 installation again.

New in TM1 9.0 SP2

The following features are new in TM1 9.0 SP2:

New Platform Support in TM1

TM1 9.0 SP2 includes support for the following additional platforms:

- Windows 2003, (64-bit Intel Itanium II)
- Solaris 10 Sparc (64-bit)
- HP-UX 11i PA-Risc (64-bit)

See the section “TM1 9.0 SP2 Platform Support” earlier in these Release Notes for more details.

New Support and Functionality for SAP Data

TM1 version 9.0 SP2 now supports additional types of SAP datasources that can be imported. Data can now also be written back to SAP via ODS tables. See Chapter 4 in the TurboIntegrator guide for more details.

TM1 x86 and x64 Server Versions can Now Coexist on the Same Windows x64 System

The TM1 Installation Wizard has been enhanced to support the installation of both the x86 and x64 versions of the TM1 server on the same Windows x64 computer.

Websheets Now Have Enhanced Support for Excel Data Validation Drop-Down Lists (314686, 314716)

TM1 Web Websheets can now display and support drop-down lists that contain commas within the text entries in the list. This ability was not previously supported in earlier versions of TM1 Web.

For example, you can create a Data Validation drop-down list in Excel with entries such as “Boston, Department 1”, as shown in the figure below.

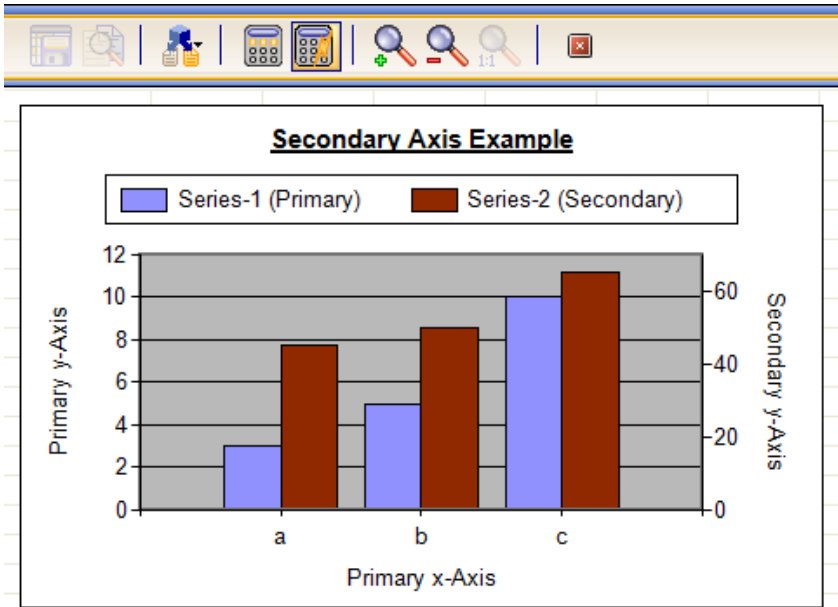
	A	B	C	D
1				
2		Items for Drop-down List		Drop-down List Example
3		Boston, Department 1		Boston, Department 1
4		Atlanta, Department 2		Boston, Department 1
5		Houston, Department 3		Atlanta, Department 2
6		San Jose, Department 4		Houston, Department 3
7		Seattle, Department 5		San Jose, Department 4
8		Chicago, Department 6		Seattle, Department 5
9		Miami, Department 7		Chicago, Department 6
10				Miami, Department 7

The following figure shows this drop-down list in a TM1 Websheet.

	Items for Drop-down List	Drop-down List Example
	Boston, Department 1	Boston, Department 1
	Atlanta, Department 2	Boston, Department 1
	Houston, Department 3	Atlanta, Department 2
	San Jose, Department 4	Houston, Department 3
	Seattle, Department 5	San Jose, Department 4
	Chicago, Department 6	Seattle, Department 5
	Miami, Department 7	Chicago, Department 6
		Miami, Department 7

Websheets Now Display Secondary Axis in Charts (303020)

If you create a chart in Excel with a secondary axis, the secondary axis and labels now display when viewing in TM1 Web as a Websheet.



New in TM1 9.0 SP1

The following features are new in TM1 9.0 SP1:

SAP BW RFC Support in TurboIntegrator

TM1 TurboIntegrator now allows you to import metadata and data from SAP BW using Remote Function Calls (RFC). You can import SAP InfoCubes, characteristics, and security definitions.

For complete details, please see Chapter 4, “Importing Business Data from SAP RFC,” in the *TM1 TurboIntegrator Guide*.

Revised TM1 Reports

The TM1 Report feature has been enhanced to allow greater flexibility when creating reports. For example, you can now include worksheets that are not part of a slice in your report and you can save a report definition for later use.

For complete details, please see Chapter 7, “Creating Reports,” in the *TM1 Clients Guide*.

Find in TM1 Web Subset Editor

The TM1 Web Subset Editor now allows you to search for element names that match a specified search string.

For complete details, please see Chapter 5, “Editing Subsets,” in the *TM1 Web Guide*.

TM1 Web Support of Excel Features

TM1 Web now supports the following Excel functionality:

- **Sheet/cell protection**
- Data validation
- Word wrap

New in TM1 9.0

This section lists new functionality introduced in the TM1 9.0 release.

New TM1 Web Server and Client

TM1 9.0 includes a new optimized TM1 Web server and a new TM1 Web client.

Cube Viewer in TM1 Web

TM1 Web cube viewers provide the ability to use any TM1 view that resides on your TM1 server.

Charting in TM1 Web

TM1 Web 9.0 includes the ability to view cube viewer data in grid format, chart format, or a combined grid/chart presentation.

Managing the Display of Objects in the TM1 Web Navigation Pane

The navigation pane of the TM1 Web client displays three object nodes: the Application node, the View node, and the Administration node.

Object Administration through TM1 Web

TM1 Web includes the ability to perform basic administration tasks through your web browser.

Planning Manager in TM1 Web

Planning Manager 1.2.1 has limited support in TM1 Web 9.0.

The Planning Manager administration console is *not* supported in TM1 Web. Administration functions, such as setting up mapping and security for Planning Manager tasks, must be done through Excel.

New Look and Feel for TM1 Architect and Perspectives Server Explorer

TM1 Architect and Perspectives have been enhanced to include a new look and feel. The Server Explorer has been updated and new icons

throughout the user interface have been updated for a more modern look.

Documentation Updates

This section includes updates and corrections to the TM1 9.0 SP2 documentation set.

Connecting to an Oracle 10 Database from a UNIX TM1 Server

The following steps describe how to enable a UNIX TM1 server to connect to an Oracle 10 database.

Overview

After installing TM1 9.0 SP2, you must perform additional steps if you want TM1 TurboIntegrator to be able to access an Oracle 10 database through a TM1 server installed on a UNIX system. These steps are required because the DataDirect/Merant 3.7 ODBC drivers installed with the UNIX TM1 ODBC Gateway are not compatible with Oracle 10 servers.

To solve this problem, you must install the latest ODBC drivers and configure the related files on your system.

Configuration Tasks

Configuring a TM1 server on UNIX to connect to an Oracle 10 database consists of the following general steps:

- Step 1 - Install the TM1 ODBC Gateway
- Step 2 - Install the Latest 32-bit ODBC Drivers
- Step 3 - Edit the TM1 odbc.ini File
- Step 4 - Verify the Tm1s.cfg File.
- Step 5 - Edit the TM1 axnet.cnf File.

Step 1 - Install the TM1 ODBC Gateway

When installing TM1, also install the ODBC Gateway component.

Step 2 - Install the Latest 32-bit ODBC Drivers

Install the latest DataDirect 32-bit ODBC drivers for UNIX.

NOTE: You must install the 32-bit version of the DataDirect drivers even if the UNIX system is a 64-bit machine. The TM1 ODBC Gateway only communicates with 32-bit ODBC drivers.

Step 3 - Edit the TM1 odbc.ini File

After installing TM1, and the latest DataDirect ODBC drivers, your system should have the following two odbc.ini files:

- **TM1 odbc.ini file** – Located in the TM1 install directory.
For example: `<TM1 install directory>/odbc/odbc.ini`
- **DataDirect odbc.ini file** – Located in the DataDirect install directory.
For example: `<DataDirect install directory>/odbc.ini`

Edit the TM1 odbc.ini file using content from the DataDirect odbc.ini file as follows:

1. Remove the contents of the TM1 odbc.ini file, taking note of the LoginID, Password, and ServerName fields.
2. From the DataDirect odbc.ini file, copy the following sections and entries into the TM1 odbc.ini file.
 - [ODBC Data Sources] – copy only the Oracle Wire Protocol setting.
 - [Oracle Wire Protocol] – copy the entire section, including all settings.
 - [ODBC] – copy the entire section, including all settings.
3. In the TM1 odbc.ini file, comment out the HostName, PortNumber, SID, and TNSNamesFile fields.
4. In the TM1 odbc.ini file, set the LoginID, Password, and ServerName fields to their appropriate values. These should be set to the values contained in the original TM1 odbc.ini file.
5. Save and close the TM1 odbc.ini file.

The resulting TM1 odbc.ini file should look similar to the following:

```
# ***** Beginning of TM odbc.ini file *****  
[ODBC Data Sources]  
Oracle Wire Protocol=DataDirect 5.1 Oracle Wire Protocol  
  
[Oracle Wire Protocol]  
Driver=/opt/odbc32v51sp2/lib/axora21.so  
Description=DataDirect 5.1 Oracle Wire Protocol  
AlternateServers=
```

ApplicationUsingThreads=1
ArraySize=60000
CachedCursorLimit=32
CachedDescLimit=0
CatalogIncludesSynonyms=1
CatalogOptions=0
ConnectionRetryCount=0
ConnectionRetryDelay=3
DefaultLongDataBuffLen=1024
DescribeAtPrepare=0
EnableDescribeParam=0
EnableNcharSupport=0
EnableScrollableCursors=1
EnableStaticCursorsForLongData=0
EnableTimestampWithTimeZone=0
#HostName=<Oracle_server>
LoadBalancing=0
LocalTimeZoneOffset=
LockTimeOut=-1
LogonID=axent
Password=axent
#PortNumber=<Oracle_server_port>
ProcedureRetResults=0
ReportCodePageConversionErrors=0
ReportRecycleBin=0
ServerName=test
ServerType=0
ServiceName=
#SID=<Oracle_System_Identifier>
TimestampEscapeMapping=0
#TNSNamesFile=<tnsnames.ora_filename>
UseCurrentSchema=1
WireProtocolMode=1

```
[ODBC]
IANAAppCodePage=4
InstallDir=/opt/odbc32v51sp2
Trace=0
TraceDll=/opt/odbc32v51sp2/lib/odbctrac.so
TraceFile=odbctrace.out
UseCursorLib=0
# ***** End of TM odbc.ini file *****
```

Step 4 - Verify the Tm1s.cfg File

The Tm1s.cfg file contains settings that TM1 uses to enable the axnet server process, allowing TM1 to communicate with ODBC sources via the ODBC gateway. These settings should have already been configured during the installation of the TM1 ODBC Gateway.

The Tm1s.cfg file is located in the TM1 database directory. Verify the Tm1s.cfg file contains the following fields and settings.

```
RunningInBackground=T
UseELFODBC=T
ELFODBCServer=qadb
ELFODBCUserName=root
ELFODBCPassword=abc123
```

See the *Applix TM1 Administrator Guide* for more details on the Tm1s.cfg file.

Step 5 - Edit the TM1 axnet.cnf File

The default location of the TM1 axnet.cnf file is:

<TM1 install directory>/Custom/config/axnet.cnf

Modify the axnet.cnf file as follows:

1. Locate the line of code that points the libFor elfodbc parameter to the TM1 /odbc/lib directory, as shown in the following example:

```
libFor elfodbc <TM1 install directory>/odbc/lib
```

2. Edit this line to point to the lib directory in the DataDirect install directory using the following format:

```
libFor elfodbc <DataDirect install directory>/lib
```

For example, if your TM1 install directory is set to /Database2/902, and your DataDirect install directory is set to

/opt/odbc32v51sp2, then the resulting axnet.cnf file would look similar to the following sample:

```
setenvFor elfodbc ODBCINI=/Database2/902/odbc/odbc.ini
```

```
libFor elfodbc /opt/odbc32v51sp2/lib
```

```
setenvFor elfodbc ORACLE_HOME=/Database1/oracle
```

```
setenvFor elfodbc LC_MESSAGES=en_US
```

```
libFor elfodbc /Database1/oracle/lib
```

3. Save and close the TM1 axnet.cnf file.

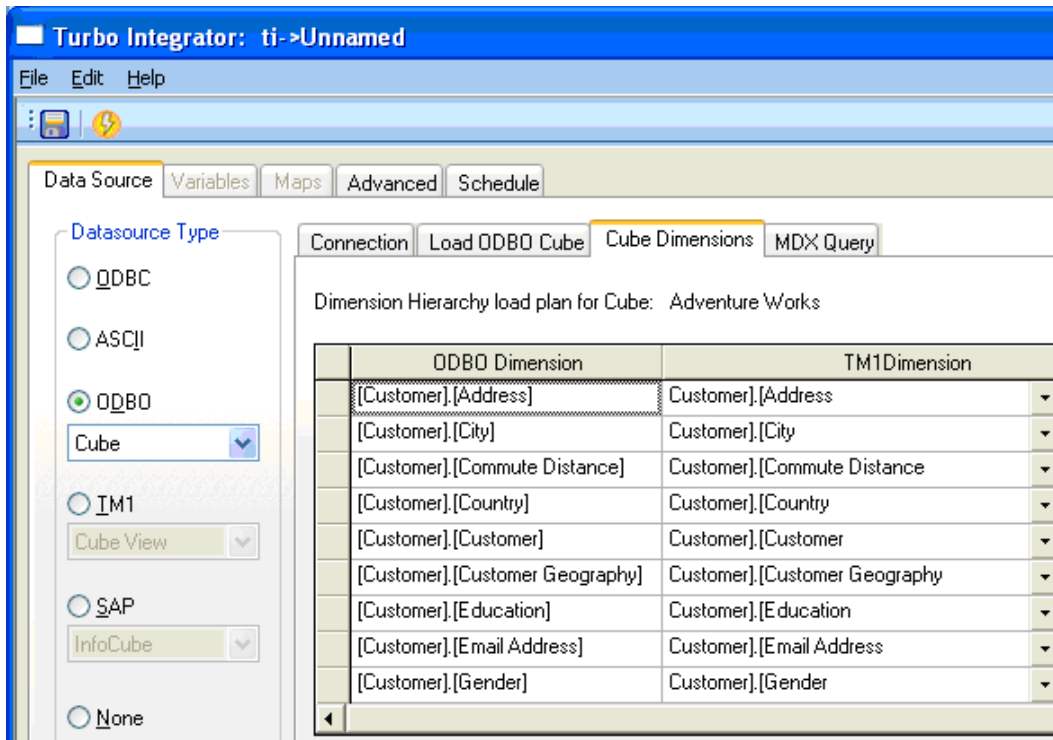
Known Issues in TM1 9.0 SP2

This section describes selected known issues that you may encounter in the TM1 9.0 SP2 release.

TurboIntegrator Generates Dimension Names with Brackets when Importing Data from MSAS 2005 (311390)

A TurboIntegrator ODBO process that pulls in a view from Microsoft Analysis Services (MSAS) 2005 creates dimension names with brackets, as shown in the TM1Dimension column in the figure below.

As a workaround, edit the dimension names to remove the brackets.



Excel Crashes When Copying/Pasting Cells That Contain a DBRW Formula (297136, 297515)

Using TM1 in Excel can sometimes cause Excel to hang or crash when copying data from a cell containing a DBRW formula and then using Paste or Paste Special to paste the data into another cell while Excel is in Automatic calculation mode.

If you encounter this problem, you can set the worksheet containing the TM1 slice to Manual recalculation mode to safely copy/paste slice cells.

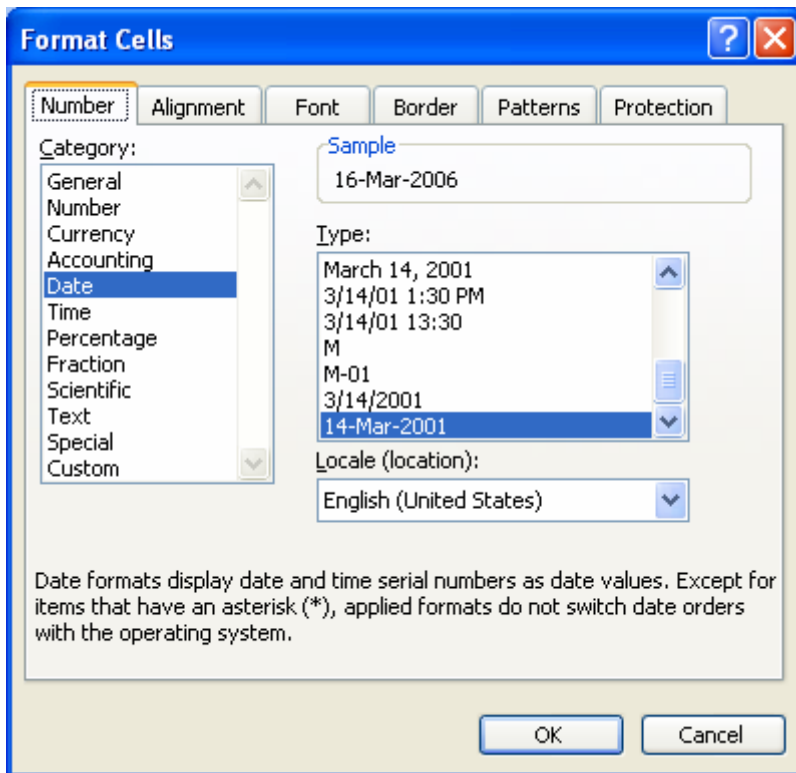
Some Custom Date Formats in Excel Do Not Display Correctly in a Websheet (310136)

Formatting dates in Excel with the Custom format instead of the Date format can cause some dates to display in a Websheet without the custom formatting. When TM1 Web can not display a custom date format, it defaults to the standard date format for your current Locale.

For example, if you apply the Custom format of d-mmm-yy in Excel, TM1 Web will display this as 3/16/2006 instead of the expected 16-Mar-06.

- If your Internet Explorer Locale is set to US, then Websheets display unsupported custom date formats in the default format of mm/dd/yyyy or 03/16/2006.
- If your Internet Explorer Locale is set to UK, then Websheets display unsupported custom date formats in the default format of dd/mm/yyyy or 16/03/2006.

If you experience this problem, use one of the available Date formats in Excel instead of a Custom format, as shown in the following figure.

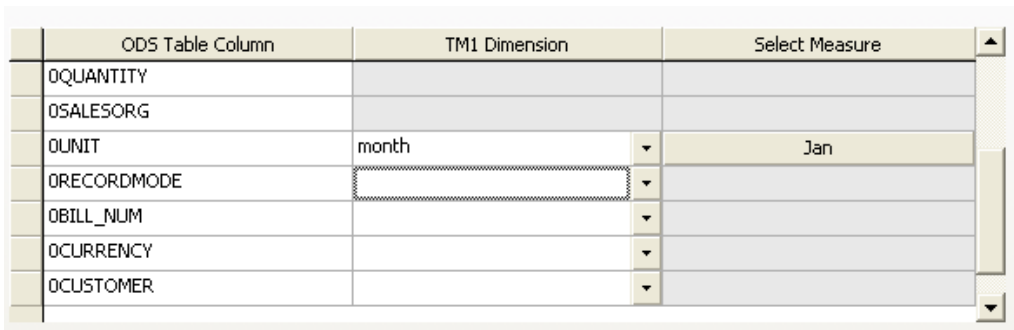


Deleting a TM1 Dimension Value in a TurboIntegrator SAP ODS Export Process also Deletes the Drop-down Menu Selector (316333)

The following problem occurs when defining an SAP ODS Table export process in TurboIntegrator (TI):

1. Create a TI process with an SAP/ODS Table source.
2. Complete the Connection tab to access the SAP system.
3. Click the ODS Setup tab.
4. Select the appropriate TM1 View and OSD Table.
5. Map a TM1 Dimension to an ODS Table Column.
6. Select the dimension you just mapped and press the Delete key.

The Dimension is cleared from the cell, but the drop-down menu control is also deleted, as shown in the figure below. You must exit and then reopen the process to restore the control.



ODS Table Column	TM1 Dimension	Select Measure
OQUANTITY		
OSALESORG		
OUNIT	month	Jan
ORECORDMODE		
OBILL_NUM		
OCURRENCY		
OCUSTOMER		

Invalid Circular Reference Error in Excel (300684, 312083, 312131)

Some customers have reported an issue in TM1 9.x and 8.x with invalid circular reference errors that appear when manually recalculating a TM1 slice in Excel. The issue only appears when using Excel 2003 SP2 and does not happen with previous versions of Excel. The TM1 View function causes an invalid circular reference error when a TM1 DBRW function is referenced as an argument in a worksheet function that also points to arguments on multiple sheets.

As a workaround, replace the server name and cube name arguments in the cell that contains the TM1 View function. Cut and paste these arguments back into the same cell and then recalculate by pressing F9.

Text in a Title Element Cell may Display Truncated and Wrapped in a Websheet (311087)

By default, when viewing a Websheet in TM1 Web, the width for cells that contain element name titles is automatically adjusted if nothing is in the adjacent cell to the right as shown below.

Department :	Total Organization	⌵
Report :	actual	⌵
Exchange Rate :	actual	⌵
Report Period :	2003	⌵

If an element name title is too long and the adjacent column to the right contains a value, then the element name could display truncated and wrapped as shown in the following example.

Department :	Total Organizatio	⌵	sample text
Report :	actual	⌵	
Exchange Rate :	actual	⌵	
Report Period :	2003	⌵	

This happens because the button that opens the Subset Editor must also be displayed in the same cell and TM1 has to truncate and wrap the element name within the cell.

As a workaround, increase the cell width for element name titles in your Excel file, especially when the adjacent column contains values. This will provide extra space in the cell for the automatic insertion of the Subset Editor button when the sheet is displayed as a Websheet, as shown in the example below. You can also manually set the word wrap feature for these cells in Excel.

Department :	Total Organization	⌵	sample text
Report :	actual	⌵	
Exchange Rate :	actual	⌵	
Report Period :	2003	⌵	

Conflicting Port Numbers for TM1 Planning Sample Database after Installing TM1 x86 and x64 on a Windows x64 System (316113)

After installing the x86 and x64 versions of TM1 on a Windows x64 system, the port numbers for the Planning Sample database are set to the same port by default. If you want to run the Planning Sample database with both the x86 and x64 versions of TM1 server, you have to edit the port number in one of the Tm1s.cfg files to point to a different

port number. This also applies when installing the other TM1 sample databases available in the TM1 installation.

To edit the PortNumber parameter in the Tm1s.cfg file:

1. Locate the Tm1s.cfg file for the sample database that was installed with either the x86 or x64 TM1 version.

For example, if you installed both versions of TM1 to their default locations, then the Tm1s.cfg file for the Planning Sample database is located in the following directories.

TM1 x86 - Planning Sample database:

C:\Program Files(x86)\Applix\Custom\TM1Data\PlanSamp

TM1 x64 – Planning Sample database:

C:\Program Files\Applix\Custom\TM1Data\PlanSamp

2. Open the Tm1s.cfg file with a text editor, such as Windows Notepad.
3. Locate the line of code where the PortNumber parameter is set, as shown below, and change the value to a another valid port number.

```
PortNumber=12345
```

When you install a TM1 server with the Planning Sample database, the default port number for the sample is set to 12345. Valid port numbers are between 5001 and 49151.

4. Save and close the Tm1s.cfg file.
5. In Windows Services, stop and then restart the associated TM1 server.

Running TM1 Web with Microsoft Virtual PC may Decrease Performance (309761)

You may experience slow performance, and in some cases a crash, when running TM1 Web inside of Microsoft Virtual PC. For example, performance may decrease when moving dimensions around in the TM1 Web cube viewer. This performance issue may be related to the decreased allocation and availability of computer resources, especially RAM memory, when running an application in Microsoft Virtual PC.

Applix does not currently test or support using TM1 with Microsoft Virtual PC.

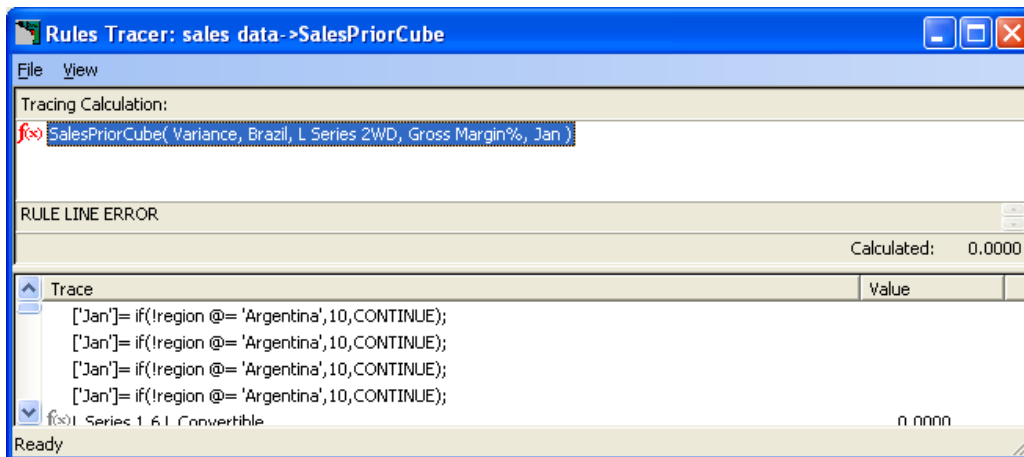
Rule Line Error (308325)

A RULE LINE ERROR can display if a user writes a cube rule that uses the CONTINUE function but does not include a code statement afterwards, as shown in the following example:

```
['Jan']= if(!region @= 'Argentina',10,CONTINUE);
```

```
#[ 'Jan']=20;
```

When viewing related calculations in the Rules Tracer window, A RULE LINE ERROR displays as shown below.



User with Admin Rights on a Cube Cannot Edit Rule (316816)

The Open and Delete options in the Rule menu are incorrectly disabled for a user that has administrator rights on a cube and wants to edit the rule for this cube using the Rule menu.

As a workaround, double click the rule directly to open it for editing. Also, you can delete the rule using the Delete key on your keyboard.

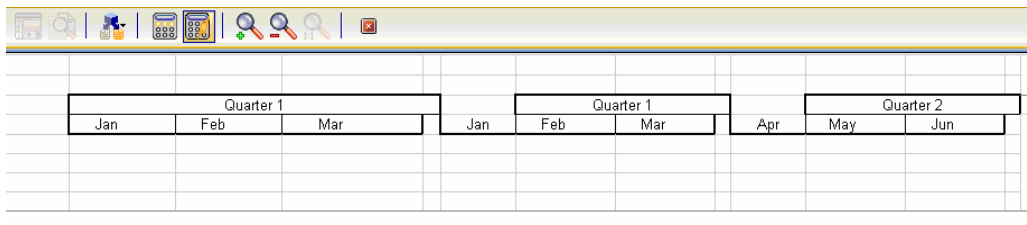
Hidden Column within Merged Cells does not Display Correctly in a TM1 Web Websheet (311669)

If your Excel spreadsheet has a hidden column within a set of merged cells, then these cells and columns will not display correctly when viewing as a Websheet in TM1 Web.

For example, the following Excel spreadsheet has a hidden column D and also has a group of cells that merge across the hidden column, from column B to E.

P4													
A	B	C	E	F	G	H	I	J	K	L	M	N	O
	Quarter 1				Quarter 1				Quarter 2				
	Jan	Feb	Mar		Jan	Feb	Mar		Apr	May	Jun		

The above example will display in TM1 Web as follows.



P4													
A	B	C	E	F	G	H	I	J	K	L	M	N	O
	Quarter 1				Quarter 1				Quarter 2				
	Jan	Feb	Mar		Jan	Feb	Mar		Apr	May	Jun		

If you encounter this problem, redesign your spreadsheet so it does not include a hidden column within a group of merged cells.

Processing Worksheets May Perform Slower with Newer Versions of TM1 (300459)

Processing Worksheet users may experience a performance loss from TM1 version 7.x to newer versions of TM1. Applix is currently reviewing this issue.

As an alternative and longer-term approach, Applix recommends that Processing Worksheets be replaced by TurboIntegrator, where possible, especially for large imports.

TM1 Planning Manager Toolbar Not Displaying (311771)

In some circumstances that Applix has been unable to reproduce, the TM1 Planning Manager toolbar may not display when Excel starts up, even though the Planning Manager add-in is selected.

As a workaround, perform the following steps to manually turn on the toolbar.

1. In Excel, click **View** → **Toolbars**.
2. Make sure that **TM1 Planning Manager** has a check next to it.

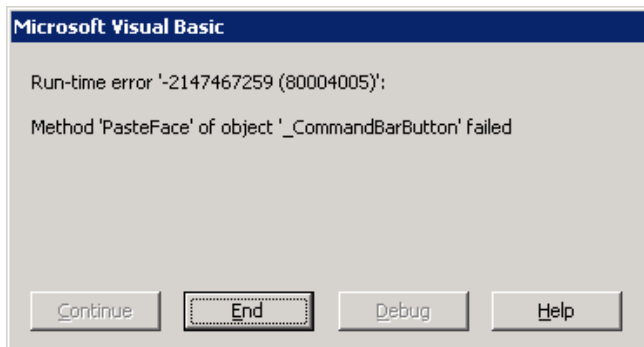
If the previous steps do not resolve the problem, try to enable the add-in as follows:

1. In Excel, click **Tools** → **Add-Ins**.
3. Select the **TM1 Planning Manager** add-in and then click **Browse** to insert the add-in file again.

4. Locate and select the add-in file, TM1 Planning Manager.xla, and then click **OK**.
5. Click **OK** to finish.

PasteFace Error Displays when Loading TM1 Perspectives with Excel 2000 (312214, 309837)

Loading TM1 Perspectives with Excel 2000 can sometimes display the following Microsoft Visual Basic run-time error message, preventing TM1 Perspectives from loading successfully:



This error can happen intermittently on a stand-alone computer, but is more likely to happen when also running a Terminal Server or Remote Desktop connection, or another application that might conflict with the Windows clipboard.

This issue is due to a known Microsoft bug related to a conflict with the Windows clipboard and the Microsoft Office PasteFace method.

The issue has been fixed in TM1 9.0 SP2 for **Office 2002 and newer**, but still exists when using **Office 2000 and older**.

If you are experiencing this problem while running TM1 Perspectives and Windows Server 2003 Terminal Services, see the following Technical Bulletin, “TM1 Perspectives/Windows 2003 Terminal Services – PasteFace Error”, for information about an available Microsoft hotfix.

Another possible workaround is to reboot your computer and restart TM1 Perspectives to clear the error.

Custom Decimal and Digit Grouping Separators may not Display Correctly in a PDF Report Exported from TM1 Web (314191)

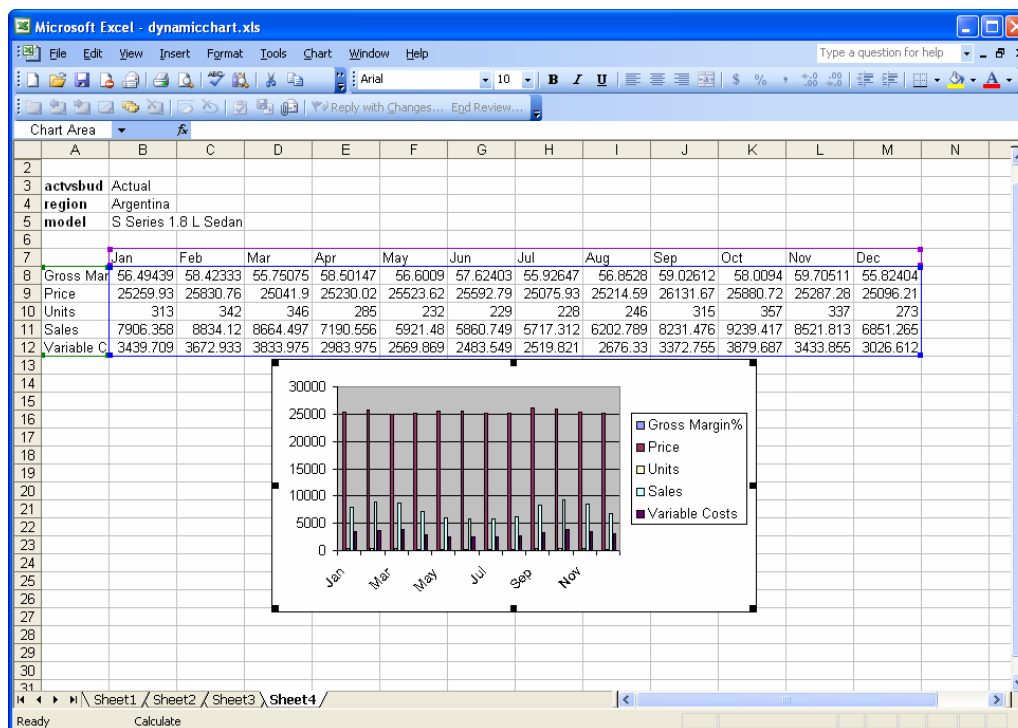
If you configure the decimal and digit grouping symbols on your computer to use characters that are not fully supported by Excel, then these custom separators may not display correctly in a PDF report that you export from TM1 Web. This can happen in the following scenario:

1. Open the Regional and Language Options dialog box from the Control Panel, and then click the **Customize** button. The Customize Regional Options dialog box appears.
2. Enter a different separator character for the Decimal Symbol and Digit Grouping Symbol options.
3. Open TM1 Web and export a report to a PDF file from either a Websheet or the Cube Viewer.

If Excel doesn't support the custom decimal and digit grouping symbols, then Excel substitutes its own default separators into the resulting PDF file based on the culture and language of the installed version of Excel.

Cannot Reload a Websheet with a Dynamic Chart in TM1 Web (313995)

Reloading a websheet that contains a dynamic chart can hang TM1 Web if the chart was selected when the websheet was saved in Excel, as shown in the following figure.



Follow these steps as a workaround:

1. Open the websheet in Excel, unselect the dynamic chart, and then resave the file.
2. Restart TM1 Web and then open the websheet.
3. Click the Reload button and the websheet is reloaded without a problem.

Display Problem in Cube Viewer when Expanding a Consolidation Element in Some Versions of TM1 (312348, 314007)

A customer has reported a display problem with consolidation values when expanding a consolidation in a Cube View. This problem happens only under the following conditions:

- When the TM1 server parameter, ViewConsolidationOptimization, is set to F. The default setting is T.
- When using some slower build versions of TM1 server, such as TM1 8.4.3 64-bit debug version. This is not typically seen in release versions of TM1.

The following sequence generates this display problem:

1. Open a view with a collapsed consolidation.
2. Expand the consolidation element in the view.

The wrong values are displayed for the underlying consolidation elements. For example, the consolidation values incorrectly display with all the same number. However, the underlying n-Elements are displayed correctly.

This behavior appears only to happen when expanding a consolidation directly in a cube view, as opposed to using the Subset Editor.

As a workaround, use the Subset Editor to expand the consolidation element when working with a cube view. You can also use the Subset Editor to expand the consolidation and then save the view with the consolidation already expanded. The consolidated values should then display correctly in the cube view.

The plan_load_budget_odbc TurboIntegrator Process Fails to Load in the Planning Sample Database (313937)

A problem was discovered with the TM1 Planning Sample database that prevents users from previewing or executing the sample TI process, plan_load_budget_odbc. This problem can be recreated as follows:

1. Open TM1 Perspectives and connect to the Planning Sample database.
2. Open the Administration \ Data Load Procedures application.
3. Open the plan_load_budget_odbc process.

The following error is returned:

Unable to Open Connection to Database

If you want to work with this sample process, use one of the following workaround solutions:

- Delete and then recreate the ODBC connection. Make sure you name the new ODBC datasource the same as the old one, Plan_load_data, and have it point to the same sample database, plan_load_data_odbc.mdb.

Or, create a brand new ODBC datasource pointing to the plan_load_data_odbc.mdb database file, and then edit the plan_load_budget_odbc sample TI process to use this new ODBC datasource.

Aliases not Displaying on Reports Built with Financial Reporting (314032)

Aliases are not displaying when viewing the Trial Balance and Income Statement reports in TM1 Financial Reporting.

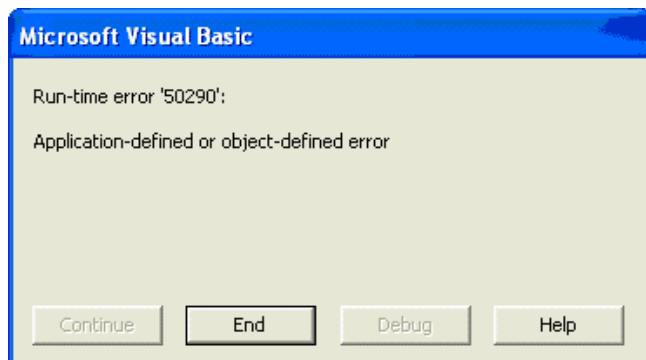
As a workaround to this issue, open the relevant subset in the Subset Editor and turn the aliases on.

Error Opening CSV Files after Slicing with Perspectives (285762)

Applix testing has uncovered a problem with Microsoft Excel. The following sequence generates an error:

1. Run Perspectives and create a slice.
2. Open any .csv file in Excel.
3. Try to select a different cell on the CSV file- you cannot move the selection.
4. Go back to the slice. You cannot pick any other cell.

The Excel client eventually crashes with the following Visual Basic runtime error:



This is a Microsoft Excel problem. This crash occurs because Excel unexpectedly calls the TM1 handler for worksheet functions, even in sheets that do not contain TM1 functions. The problem exists in Excel; TM1 has no control over when a handler is called by Excel.

To fix this problem, you must install a Microsoft Hot Fix appropriate for your version of Microsoft Office:

For Excel 2003 users:

<http://support.microsoft.com/default.aspx?scid=kb;en-us;898071>

This Excel 2003 post-Service Pack 1 hotfix package is dated April 28, 2005. The hotfix is described in Microsoft knowledge base article # 898071.

For Excel 2002 users:

<http://support.microsoft.com/default.aspx?scid=kb;en-us;897322>

This Excel 2002 post-Service Pack 3 hotfix package is dated April 21, 2005. The hotfix is described in Microsoft knowledge base article # 897322.

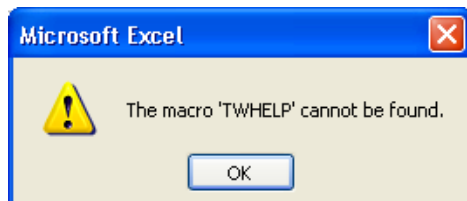
There is no fix for this problem if you are running Excel 2000.

Error Occurs When Multiple Instances of Excel are Running (283981)

Perspectives throws an error when the following sequence occurs:

1. Start Perspectives
2. Browse a view, and create a slice.
3. Start a new instance of Excel. Do not load TM1.
4. Switch back to Perspectives.
5. Browse another view, and create a slice.

The following error appears in the second Excel window:



This error will be fixed in a future release of TM1.

Problem Retrieving Flattened Rowsets from SAP BW (274832)

During testing, Applix engineering discovered a problem executing the following MDX query:

```
SELECT { [0SHIPPTYP].[01]} ON ROWS , {[Measures].MEMBERS} ON  
COLUMNS FROM [SCM_LES/ZLES_C02_Q0001_1_1]
```

The resulting flattened rowset has 1 row, with an empty member caption value. No errors are reported from SAP, but no member caption either.

This problem with flattened rowsets is apparently not a TurboIntegrator problem. Applix is working with SAP to resolve this problem.

MDX Syntax Error Problem (281062)

The following MDX statement returns an error.

```
SELECT {[month].[level002].Members(0) : [month].[Apr]} ON AXIS(0) FROM  
[SalesCube]
```

This statement returns the following error from TM1:

```
MDX: Syntax error at or near: ' : [month].[Apr]} ON AXIS(0) FROM [Sales ... ',  
character position 37
```

The expression [month].[level002].Members(0) is a tuple, not a member. However, Microsoft Analysis Services support the conversion of a one-dimensional tuple to its member when in a context that expects a member. TM1 does not support this in 8.4.x. The user must use a TM1-specific extension in this context:

```
SELECT { tm1member([month].[level002].Members(0), 0) : [month].[Apr]} ON  
AXIS(0) FROM [SalesCube]
```

Spreadsheet Crash with Excel 2000 (283750)

Applix testing has uncovered a TM1 Perspectives crash when the following conditions exist:

1. The user is running Excel 2000. (This problem does not occur in newer versions of Excel.)
2. The workbook's Calculation Mode is "Automatic". (When you generate a slice in Perspectives, by default Perspectives sets the calc mode to "Manual".)
3. A user types a value into a cell, then clicks on another cell. (Notice that the user does not press Tab, Enter, or an arrow key.)

One workaround for the problem is to set the calculation mode for the workbook to manual, as follows:

From Excel, choose Tools > Options > Calculate and set the calculation mode to Manual for the workbook. This calculation mode is saved with the workbook. Excel will require the user to hit F9 to update the sheet.

Guidelines for SpreadingPrecision (284669)

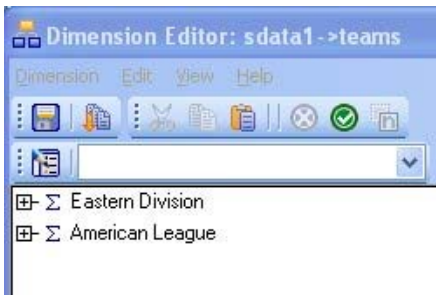
The Tm1s.cfg parameter SpreadingPrecision is used to establish a threshold of accuracy for data spreading in the presence of consolidated holds. The default setting for Spreading Precision is 1e-8.

When SpreadingPrecision is set to a high number (such as 1E8), many spreading functions will fail. Applix recommends setting SpreadingPrecision to a value no higher than 1e-4.

Cutting and Pasting Root-level Consolidations in the Dimension Editor (286965)

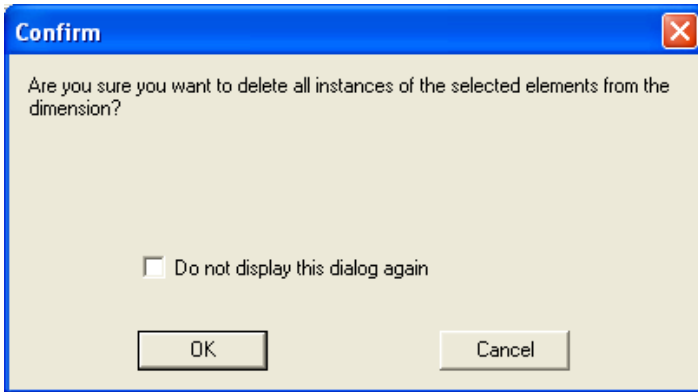
When cutting elements from a dimension, a cut operating is treated as "delete element" if the element is displayed at the root level in the dimension editor. When an element is deleted, all information regarding its children is lost. If you then paste the element, it is inserted as a new N-level element.

For example, consider the following figure.



This dimension has two consolidations at the root level: Eastern Division and American League.

If you right-click Eastern Division and choose Cut, the following warning appears:



If you click OK, the element you deleted is removed from the dimension.

If you then choose Paste, the Eastern Division element is added to the dimension, but its children are lost, as shown in the following figure.



This issue will be addressed in a future release of TM1.

When Creating a TurboIntegrator SAP RFC Process, the Action Column is Cleared if You Use the Down Arrow Key to Leave a Cell (310076)

This problem can be reproduced with the following steps:

1. In TurboIntegrator, create a new SAP InfoCube process.
2. On the **Characteristics** tab, type in a name for a characteristic in a cell under the TM1 Dimension column. Use the down arrow key to leave the cell. As expected, the Action will change to Create.
3. If you continue to use the down arrow key to navigate from row to row while in the TM1 Dimension column, the value in the TM1 Dimension Action column will incorrectly change to Null and display as blank.

As a workaround to this problem, use the mouse to click out of the cell to another cell instead of using the down arrow key.

AllowExternalRequests Can Cause Server Crash when Used with Cube View or Dimension Subset Data Sources (296861, 306967)

When a TurboIntegrator process uses either a cube view or a dimension subset as a data source, the AllowExternalRequests function **must not** be used in the process.

The AllowExternalRequests function allows other TM1 users to access the server during process execution. In most circumstances, this is beneficial and results in maximum server availability for TM1 users. However, when the data source for a process is either a cube view or a dimension subset, allowing users access to the TM1 server can result in the data source for a process being changed in the middle of process execution, which can cause a TM1 server crash.

Excel Crashes When Copying/Pasting Slice Cells That Reference Hidden Cells (298323)

When Excel is in Automatic calculation mode, copying and then pasting a slice cell that references any hidden cell may crash Excel. If you encounter this problem, you can set the worksheet containing the TM1 slice to Manual recalculation mode to safely copy/paste slice cells.

Generating PDF Reports from TM1 Web (298954)

To generate PDF reports from TM1 Web, the following items must be installed on the computer where the TM1 Web components are installed:

- GNU Ghostscript – Provides an interpreter for the PostScript language and the PDF file format
- The Tm1p.ini file – Includes a parameter, TM1PostScriptPrinter, which determines the printer driver used to generate PDF

These components are automatically installed and configured when you perform a standard TM1 Web installation. However, these components are *not* installed if you perform a custom TM1 Web installation and choose to install only the TM1 Web components.

To ensure that users can generate PDF reports from TM1 Web you *must* install one of the TM1 clients (Architect, Perspectives, or Client) along with the TM1 Web components when you perform a custom TM1 Web installation.

Problem Running the German TM1 Web Client with Older Versions of Internet Explorer (299857)

Applix testing revealed a problem running a German version of TM1 Web on Windows XP. Using German Windows XP Internet Explorer version 6.0.2800.1106.xpsp2.032422-1633, the TM1 Web client crashes when you drag and drop dimensions in a cube viewer.

Upgrading Internet Explorer solved the problem in the following versions of Windows:

- German Windows XP - Upgrading Internet Explorer to a more recent version (6.0.2800.1106.xpsp2.050301-1526) solved the problem.
- German Windows Server 2003 - Upgrading Internet Explorer to version 6.0.3790.1830 with service pack 1 solved the problem.

If you are running a version of Internet Explorer older than these two recommended versions, Applix recommends updating your browser software.

Cannot Open a Websheet Containing the 0x1A Hexadecimal Character (302397)

If you attempt to open a Websheet containing the 0x1A hexadecimal character, TM1 Web issues the following error:

Error occurred while converting the MS Excel workbook into xml format: hexadecimal value 0x1A is an invalid character.

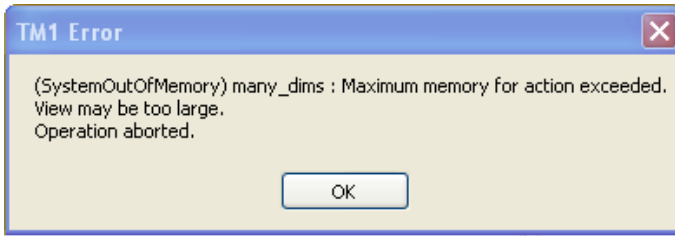
If you remove the 0x1A hexadecimal character from the Websheet, the file will open in TM1 Web.

NOTE: The ASCIIOutput TurboIntegrator function places the 0x1A hexadecimal character at the end of all generated files. If you use ASCIIOutput to export TM1 data to an ASCII file and then attempt to open the file in a TM1 Websheet, you will encounter this error.

Error When Drilling To a Cube View with More Than 14 Dimensions (302439)

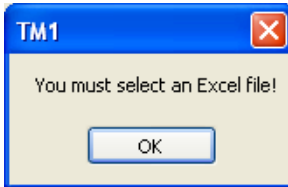
When you create a drill process that drills to a TM1 cube view with more than 14 dimensions, the view must exist *before* you begin to define the drill process.

If you define a view with more than 14 dimensions while creating a drill process, any attempt to drill to the view will result in a SystemOutOfMemory error.



Cannot Attach an Excel File to an Application When File Extension Uses Capital Letters (303002)

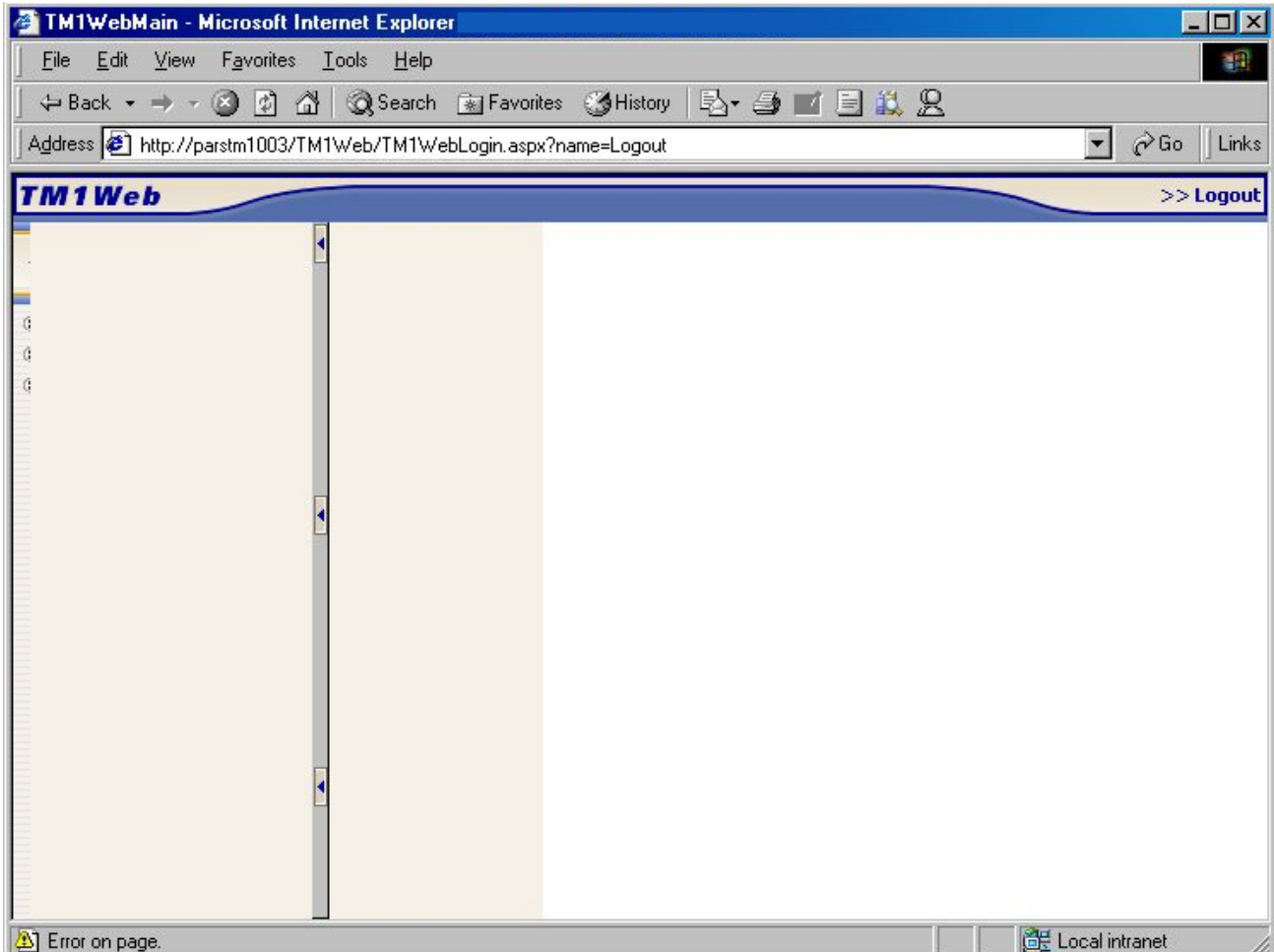
If you attempt to attach or upload an Excel file to a TM1 Application from the Server Explorer, and the Excel file extension appears in capital letters (.XLS), TM1 does not recognize the file as a valid Excel file. In this circumstance, TM1 issues the following error:



To work around this problem, save all Excel files with lower case characters in the file extension (.xls).

TM1 Web Navigation Pane Does Not Display Properly in IE 5.5 (304126)

When you first open the TM1 Web client in Internet Explorer 5.5, the TM1 Web navigation pane does not display properly. The contents of the pane are largely obscured, as in the following image.



To restore the display of the navigation pane, simply move the mouse pointer over the pane.

Hyperlinks in Websheets Must Be Fully Qualified (304129)

Only fully qualified HTTP hyperlinks work in TM1 Websheets. Hyperlinks using relative paths or UNC paths return an error in Websheets.

Need to Log Out and Back In to TM1 Web after Network Disconnect (304165)

If a TM1 Web user is logged in to the TM1 Web system, and either the TM1 server or the Web server used to deliver TM1 experience a momentary interruption of network connectivity, the TM1 Web user will not be able open any Websheets or Views. In this case, even though the TM1 server or Web server has reestablished a network connection, the TM1 Web user must log out and back in to the TM1 Web client to restore access to Websheets or Views on the TM1 server.

Charts not Displaying in Websheets when using Freeze Panes in a Worksheet (306281)

In some cases, when Freeze Panes is applied to an Excel worksheet, the charts in the sheet will not display when the sheet is opened as a TM1 Websheet. This can happen when Freeze Panes is applied to a range of selected cells, freezing both a column and a row, instead of freezing just one individual column or row.


You can work around this problem by inserting a value in a cell at the outer limits of the spreadsheet, past where the charts are located. Enter a value to the bottom and right of the charts that are outside of the freeze pane. You can then hide these entries by formatting the values so that the font color is identical to the cell background color. If at least one cell after the location of a chart contains a value, the chart will display in a TM1 Websheet, even when Freeze Panes is applied.


Modifications To an ODBC TurboIntegrator Process are Not Automatically Saved When the Process Is Executed (309614)

If you open an existing TurboIntegrator process that uses an ODBC data source, then make a change to the process definition (for example, change the Data Action from Store Values to Accumulate Values) and execute the process *without* explicitly saving the process, the changes to the process definition are not saved when the process is recompiled and executed.

If you make any changes to a TurboIntegrator process that uses an ODBC data source, you must explicitly save the process before executing it.

Shortcut Icon Lost When Publishing a Private Reference to a File That Has Been Uploaded to the TM1 Server (309644)

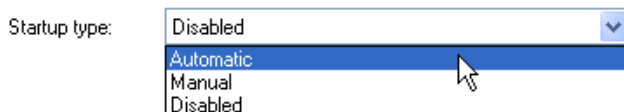
When you copy an uploaded Excel file from one TM1 application to a second application, the copy is correctly inserted into the second application as a private reference to the uploaded Excel file. The copy in the second application is denoted with the private shortcut icon .

If you then publish the private shortcut in the second application, the icon incorrectly changes to the uploaded file icon . This makes it impossible to discern from the original file uploaded to the TM1 server and the reference in the second application; both appear to reside on the TM1 server. In fact, only the original file exists on the server. The copy in the second application remains a reference, albeit with an incorrect icon.

TM1 Excel Service Disabled When the .NET Framework is Installed after TM1 Web is Installed (309928)

If you install the Microsoft .NET Framework *after* installing TM1 Web, the Startup Type property of the TM1 Excel Service is set to Disabled. You should change the Startup Type property to Automatic with the following steps:

1. Open the Windows Control Panel.
2. Double-click **Administrative Tools**.
3. Double-click **Services**.
4. Double-click TM1 Excel Service.
5. Change the Startup Type from Disabled to **Automatic**.



6. Click **OK**.

1 Pixel Cell Borders Do Not Display in TM1 Websheets (309945)

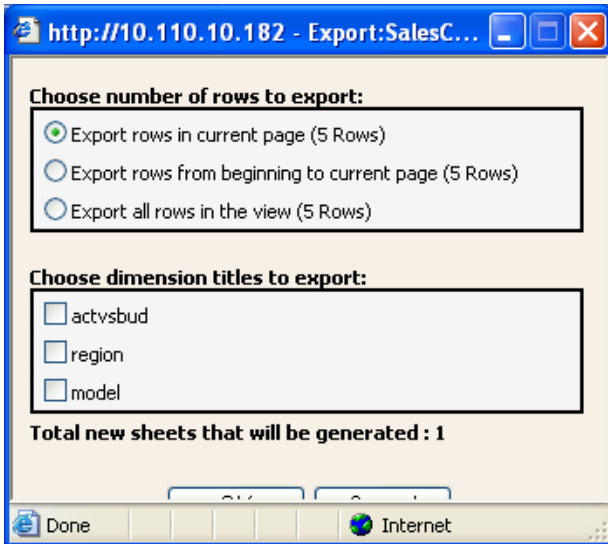
If you apply 1-pixel borders to cells in an Excel worksheet, and gridlines are visible in the worksheet, the borders do not display when the worksheet is opened as a TM1 Worksheet.

To work around this problem, disable the display of gridlines in the Excel worksheet before publishing the sheet to a TM1 application. If gridlines are disabled in the worksheet, 1-pixel borders display correctly in the corresponding TM1 Worksheet.

Export Dialog Box is Truncated when Accessing TM1 Web via IP Address (310441)

If the URL you use to access TM1 Web uses an IP address rather than a system name, the Export dialog box is truncated, making it difficult to click the OK and Cancel buttons.

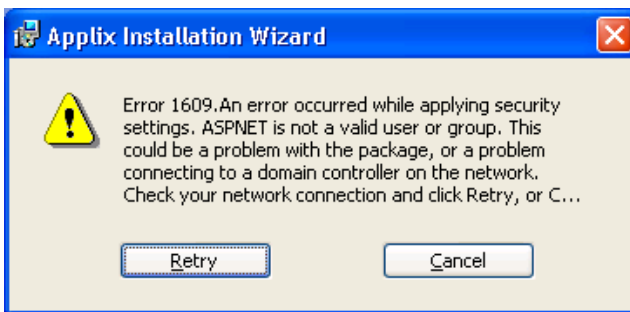
For example, if you use a URL such as `http://10.110.10.182/tm1web/TM1WebLogin.aspx` to access TM1 Web, the Export dialog box (which is *not* resizable) appears as follows:



If you use a system name, such as `http://FinanceHost/tm1web/TM1WebLogin.aspx` to access TM1 Web, the Export dialog box is not truncated.

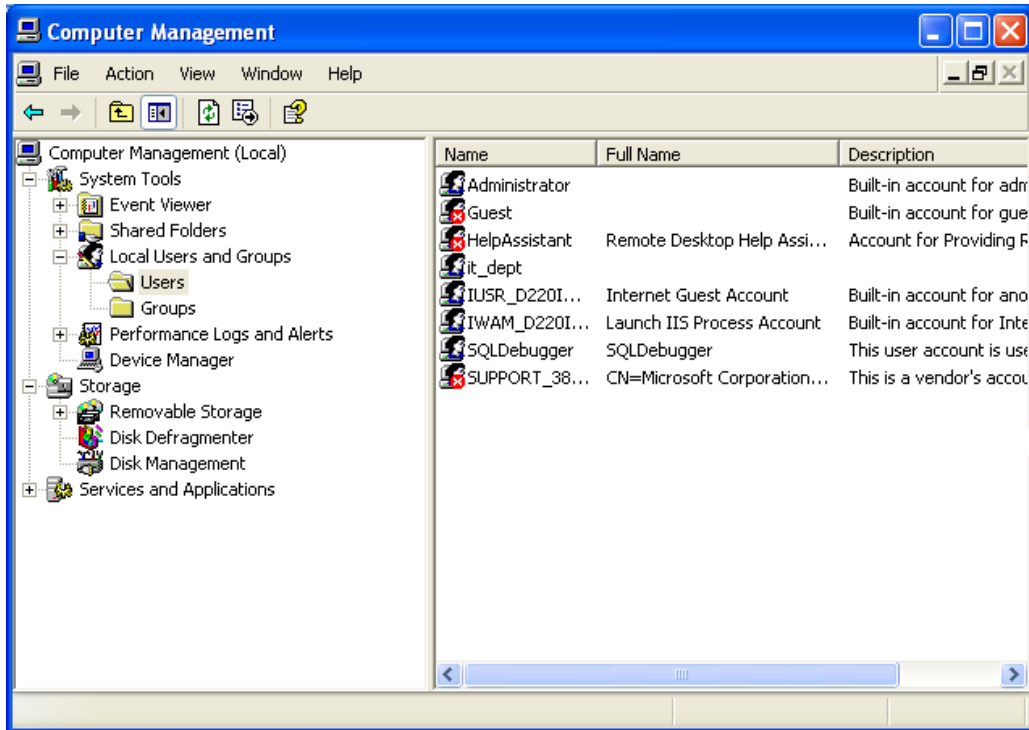
TM1 Web Installation Fails if ASPNET User is Not Defined on System (310469)

If you attempt to install TM1 Web on a system where the Microsoft .NET Framework is not yet installed, the TM1 Web installation will fail if the ASPNET user is not defined on the system.



You must define the ASPNET user before installing TM1 Web. To create the ASPNET user:

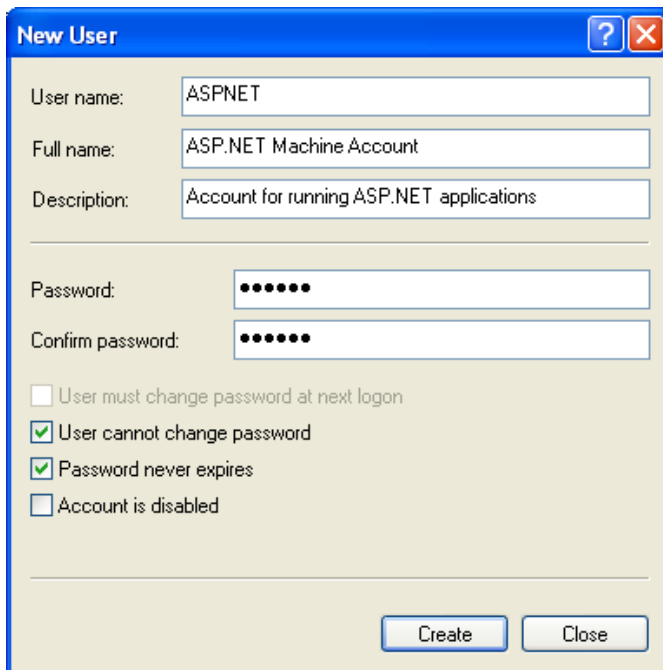
1. Open the Windows Control Panel.
2. Double-click **Administrative Tools**.
3. Double-click **Computer Management**.
4. Click **Local Users and Groups**.



5. Right-click **Users** and select **New User**.

The New User dialog box appears.

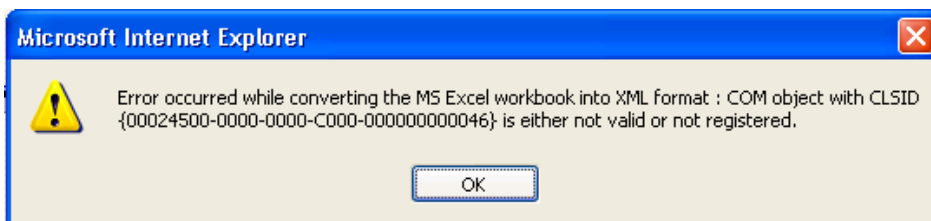
Configure the dialog box as follows, using a password of your choice.



6. Click **Create**.

Error When TM1 Web is Installed on a Web Server Where Excel is Not Installed (310474)

You can successfully install TM1 Web components on a Web server where Excel is not installed. In this circumstance, TM1 Web users can successfully login to TM1 Web and open TM1 Web cube viewers. However, if a user logs into TM1 Web and attempts to open a Websheet, TM1 Web issues the following error:



Oracle Patch Required to Access ODBC Connection from WOW64 Applications (310524)

When installing the 32-bit version of TM1 on an x64 system, the default installation directory is C:\program files (x86)\Applix. The C:\program files (x86)\ directory is specified by Microsoft for WOW64 applications.

However, if a WOW64 application needs to access an Oracle database through an ODBC connection, you *must* install the following patch before you can access the ODBC connection from any application that resides in the C:\program files (x86) directory. This patch is necessary because the parenthesis in the C:\program files (x86) directory name cause a known error in Oracle, as described in Oracle issue # 3807408.

https://metalink.oracle.com/metalink/plsql/f?p=130:5:6978400637026935379:::P_SOURCE,P_SRCHTXT:8,4928723

NOTE: You need a valid Oracle customer support ID to access the above link.

Dynamic Slices in TM1 Websheets

Dynamic slices are supported in TM1 9.0 SP2, but when a dynamic slice is opened as a Websheet in TM1 Web, dynamic slice functionality is disabled.

For example, you cannot edit row or column subsets in slices accessed through Websheets, nor can you drill down/roll up consolidations.

When you publish a dynamic slice to an application, the state of the sheet at time of publication will be reproduced when you open the slice in a Websheet. Any formatting present at publication will show up in the

Websheet, but any dynamic (element-based) formatting applied to the slice will not update in the Websheet.

Dynamic Slices in Excel

The following table provides an inquiry number and brief summary of known issues related to dynamic slices in the TM1 9.0 SP2 release.

Inquiry # Summary

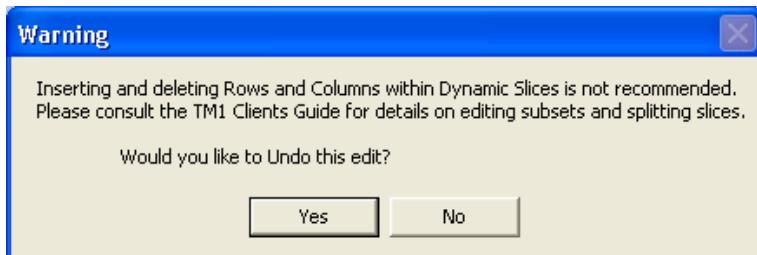
283583 *Section Boundary not Deleting after Deleting a Dynamic Slice:*

When you choose Display Section Boundary for a dynamic slice and then delete the slice, the section boundary sometimes remains visible in Excel.

To work around this problem, choose **Format > Cells**, and modify the borders for the cells.

284293 *Dynamic Slice Warning is not Appearing when Inserting or Deleting a Row/Column in Excel 2000:*

In Excel 2003, when you delete a row or column from a dynamic slice using the Excel Edit menu, the following warning appears:



In Excel 2000, this warning does not appear when you delete either the last row of a dynamic slice or the last column of a dynamic slice.

284881,
297885,
297887,
300422,
314975 *Zero Suppression not Working Correctly with Multiple Slices:*

In certain instances, zero suppression does not work properly when you have multiple slices on the same sheet and then turn zero suppression on and off for different slices. In some cases, cells may display KEY_ERR errors after unsuppressing zeroes.

Inquiry # Summary

286494 Expanding a row consolidation that is set to Expand Above, can cause user-entered data to display incorrectly in a dynamic slice in the following sequence:

1. Create a dynamic slice in Excel that has a consolidation in the row title.
2. Set the row dimension to Expand Above.
3. Add a formula in a column within the boundary of the dynamic slice. Add a title to the column on the same row as the column titles in the slice.
4. Expand the row consolidation, which should open the children above. Instead of your formula displaying on each row, the title of the column displays in each row.

The top screenshot shows an Excel spreadsheet with the following data:

	A	B	C	D	E	F
2						
3	plan_department	Total Organization				
4	plan_chart_of_a	Revenue				
5	plan_exchange	local				
6	plan_report	ly budget				
7						
8		Jan-2004	Feb-2004	Mar-2004	Difference	
9	+ Total Business	15971658	17401781	17251960	149820.6	

The bottom screenshot shows the same spreadsheet expanded to include the following rows:

	A	B	C	D	E	F
2						
3	plan_department	Total Organization				
4	plan_chart_of_a	Revenue				
5	plan_exchange	local				
6	plan_report	ly budget				
7						
8		Jan-2004	Feb-2004	Mar-2004	Difference	
9	+ Europe	6056886	6363923	6316183	Difference	
10	+ North America	4330152	4805505	4752486	Difference	
11	PacRim	2887795	3204810	3169451	Difference	
12	ROW	2696825	3027543	3013840	Difference	
13	- Total Business	15971658	17401781	17251960	149820.6	

Inquiry #	Summary
288046	<p>The following error displays in a dynamic slice when you try to edit the subset for a row dimension that contains more than 297 elements:</p> <p>Run-time error '13' - Type mismatch</p> <p>Any subsequent attempt to edit that subset or any other subset in the slice displays the following error:</p> <p>Run-time error '91'- Object variable or With block variable not set</p> <p>You must close Excel and then re-open it to be able to edit other subsets in the slice.</p> <p>NOTE: This error does not occur when the number of elements in a row dimension is 297 or less.</p>
296383	<p>Working with dynamic slices over a Wide Area Network (WAN) may cause slower performance than using them with a local connection.</p>
298062, 316722	<p><i>Error Deleting a Slice from a Sheet with Multiple Slices:</i></p> <p>In some cases, deleting a slice that was just inserted into a sheet that contains multiple slices with zero suppression turned on can cause a Microsoft Visual Basic error to display.</p> <p>In other cases, if you insert a new slice after deleting a slice, the Excel Circular Reference window appears. If you then close the sheet and reopen the original sheet, the following error appears:</p> <p>COLeExcelption, SCODE: 80020005. Type mismatch.</p>
298089, 300423	<p><i>Formatting not Displaying Correctly:</i></p> <p>In some cases, formatting does not display correctly with multiple slices and stacked rows that each have their own format. (298089)</p> <p>In other cases, when a worksheet contains two or more dynamic slices, all element-based formatting is lost when you suppress zeroes on any slice in the worksheet. (300423)</p> <p>Note that in TM1 9.0 SP2, you can suppress zeroes only when all dynamic slices in a worksheet are aligned on a single row or column axis.</p>

Inquiry #	Summary
299639	In some cases, the Section Boundary does not display correctly when multiple dynamic slices are in the same sheet. This can happen if the Section Boundary is turned on for a slice and then another slice is inserted below the first slice.
302565, 314396	Editing subsets for a dynamic slice on a sheet with multiple slices can cause some cells to display KEY_ERR. This happens after you expand and collapse consolidations in the Subset Editor, close the Subset Editor, and then return to slice.
304140, 313857, 314395, 316720, 316726, 316785	<p><i>Problems Inserting Additional Dynamic Slices into a Sheet with Multiple Slices:</i></p> <p>Row/column misalignments and KEY_ERR values may occur after inserting additional slices into a sheet with multiple slices. This can happen after using the insert Left, Above, and Right options to insert a additional slices. Using the Subset Editor on an existing slice before inserting a new slice can also cause these problems.</p> <p>In some cases, unexpected extra rows are inserted between an existing slice and a newly inserted slice.</p>
309835	<p>If a dynamic slice contains a consolidation in a column dimension, then entering text into a cell on the same row as the column title causes the following behavior.</p> <ul style="list-style-type: none"> • The text in the cell takes on the same format as the consolidated elements - the text displays as bold and has a + symbol as a prefix. • If you type a function in the same cell, the function displays as text and does not calculate.
312209, 287373	<p><i>Element Aliases not Displaying with Multiple Dynamic Slices after Zero Suppression is Enabled:</i></p> <p>If you have multiple dynamic slices using aliases on a sheet and then enable zero suppression, the slices update but the element names appear instead of alias names.</p>
314075	In some cases, elements that contain a hyphen do not display in a consolidation after collapsing and then expanding them in a dynamic slice.

Inquiry # Summary

316513 Errors display when inserting and deleting slices as follows:

1. Open a cube view in TM1 and drag all dimensions to the column and row positions so the view does not contain any title dimensions.
2. Slice the view to Excel.
3. Insert a second slice from the same cube below the first slice.
4. Delete the second slice. The second slice deletes, but displays a Microsoft Visual Basic error:
Run-time error '13' - Type mismatch
5. Try to delete the first slice and a different Microsoft error appears:
Run-time error '91'- Object variable or With block variable not set

315288 A customer reported not being able to expand all consolidations in a dynamic slice that contains a long list of consolidations in a row title position. This happens when expanding each row consolidation, one-by-one, in the list. Toward the end of the list, the + sign in front of some of the remaining consolidations changes to a – sign, and the remaining consolidations can not be expanded.

316510 The following error displays when inserting a dynamic chart into a sheet that contains multiple dynamic slices:
Run-time error '1004': Application-defined or object-defined error

Table of Other Known Issues

The following table provides an inquiry number and brief summary of other known issues in the TM1 9.0 SP2 release.

Inquiry #	Summary
280570	The user interface for the ETLDAP utility is not localized; only an English version is available. The UI will be localized in a future TM1 release.
297403	<p>The following scenario in a worksheet can cause Excel to hang or crash:</p> <ul style="list-style-type: none">• The worksheet contains at least one TM1 slice• The worksheet is in Automatic calculation mode.• The worksheet contains one or more drop-down validation lists.• You select two items from the validation lists. <p>You can safely select one item from the validation lists. When you select a second item, Excel hangs.</p>
297418	In some instances, the progress bar on the Internet Explorer status bar continues to display after you successfully close a Websheet.
298448, 298510,	The Filter option is not available on the Version Status tree when you use Planning Manager on TM1 Web.
298449	The shortcut menu is not available when you right-click a task in Planning Manager on TM1 Web.
298513	The default action button is not available in the Task window when you use Planning Manager on TM1 Web.
298940	Opening TM1 Web cube viewers containing very large row or column subsets (1000s of elements) can cause aspnet_wp.exe to recycle due to lack of memory. In such an event, the cube viewer does not display but your TM1 Web session remains active.
299993	When a cube viewer is open in TM1 Web, any error messages issued from a Websheet are obscured by the cube viewer. You must close the cube viewer to see the Websheet error message.
300158	Google Desktop installs a COM Add-in to Excel and also tries to create an index anytime an Office file is created, which cause errors when opening TM1 Websheets.

Inquiry # Summary

300168 If the Admin Host is set to localhost on the TM1 Web login screen, all available servers appear twice in the TM1 Server drop-down menu.

300423 When a worksheet contains two or more dynamic slices, all element-based formatting is lost when you suppress zeroes on any slice in the worksheet.

Note that in TM1 9.0 SP2, you can suppress zeroes only when all dynamic slices in a worksheet are aligned on a single row or column axis.

300651 In the Windows-based TM1 Cube Viewer, string data in cells appear left-justified, as in the following image:



stringdim		
d2	s1	s2
a1	test	test
a2	string	string

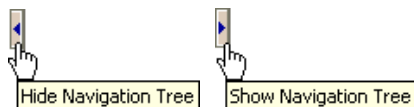
In the TM1 Web Cube Viewer, string data in cells appear right-justified, as in the following image:



stringdim		
d2	s1	s2
a1	test	test
a2	string	string

302129 If a TM1 Websheet includes a large chart, the chart is split across two or more pages when you export the Websheet to PDF.

302668 When running TM1 Web on Internet Explorer 5.5, you cannot click and drag the divider between the navigation pane and data pane to resize the navigation pane. You can, however, click the buttons on the divider between the navigation pane and data pane to either hide or show the navigation pane.



You can successfully resize the navigation pane when running TM1 Web on Internet Explorer 6.0.

303024 If you apply multiple formats to a chart title in a slice worksheet, the chart title appears as plain text when the slice is viewed in a Websheet.

If you apply a single format to a chart title in a slice worksheet,

Inquiry # Summary

the format is retained when the slice is viewed in a Websheet

300408,
302450

In some circumstances that Applix has been unable to reproduce, TM1 issues a Microsoft Excel: Cannot Empty Clipboard error when you attempt to slice a cube view to Excel.

If you encounter this problem, Applix suggests the following workaround to restore your ability to create a slice:

1. Open Notepad.
2. Type a few characters.
3. Select the characters.
4. Choose **Edit** → **Copy**.

This purges the old contents of the Clipboard and replaces them with just a few characters.

5. Create your slice in TM1.
-

305346

If a new cube is created on a TM1 server according to the following procedure, the cube is inserted in the incorrect location in the server tree. This problem only occurs when creating a cube on a server that previously contained no TM1 application folders.

1. Create a new application folder in the Application Organizer.
2. Right click on the new folder and choose **New** → **Cube**.
3. While the Creating Cube window is open, delete the new application folder.
4. Complete the process of creating a new cube.

The new cube is correctly inserted into the Cubes group, but the reference to the new cube is inserted at the bottom of the TM1 server tree, below the Replications group. When you log out of the TM1 server and then log back in, the reference appears in the Applications group independent of any application folder.

If you delete the cube, the corresponding reference is not deleted from the references group. You must manually delete the reference from the }Applications directory in your server's data directory.

305350

If a TurboIntegrator process uses a .cma file that was generated from a dimension export as a datasource, the values in the .cma

Inquiry #	Summary
	file are incorrectly used as variable names in the process.
305867	<p>If you are running the TM1 Web client in a language <i>other</i> than the language of your operating system, you must ensure that your browser language and regional setting language are set to the same value.</p> <p>For example, if you have an English OS, but want to run TM1 Web in French, your browser language must be set to French and your computer's regional setting language must be set to French.</p>
308494	Stacking multiple dimensions on the row axis can cause the data grid in any TM1 client to shrink to an unusable size.
308505	<p>It is possible to assign names to cubes or processes that include a space at the end of the object name and immediately preceding the file extension. For example, MyCube .cub, or ImportProcess .pro.</p> <p>Objects with such names are not loaded when the TM1 server starts and consequently are not available through the Server Explorer.</p>
309855	If a worksheet contains cells that use the ??? custom format, the worksheet cannot be opened as a TM1 Websheet. You will receive an Operation Failed error when attempting to open such a Websheet.
310153	If you click CTRL+F while either the Filter or Sort menu is revealed in the Advanced mode of the Subset Editor, the Internet Explorer Find dialog box appears. After you dismiss the Find dialog box, the Subset Editor is frozen. You must close and reopen the Subset Editor to regain functionality.
310446	<p>You cannot export a TM1 Web cube viewer containing a chart to Excel in the following unique scenario:</p> <ul style="list-style-type: none"> • The TM1 Web client is running on an English OS. • The browser locale is set to German. • The regional settings for the system on which the browser is running is set to German. <p>In such a scenario, you will receive an error when attempting to export the cube viewer.</p>
310450	When saving a TM1 report, if you choose Generate New Workbook for Each Title, enter a directory name, and click the Save As button, ".xls" is appended to the end of the directory

Inquiry #	Summary
	<p>name. This causes an error when attempting to save the report. You can safely delete “.xls” from the end of the directory name and save the report.</p>
310592	<p>If the Language Preference for the browser in which you run the TM1 Web client includes a language that is not supported in the .NET 1.1 framework, you will receive an error when attempting to login to TM1 web.</p> <p>For a complete list of the languages supported in the .NET 1.1 framework, please refer to the following article in the MSDN Library:</p> <p>http://msdn.microsoft.com/library/default.asp?url=/library/en-us/cpref/html/frlrfSystemGlobalizationCultureInfoClassTopic.asp</p>
310778	<p>A 9.0 TM1 web client cannot connect to a 9.0 SP2 TM1 server when the server is running on a computer with multiple network cards.</p>
311089	<p>KEY_ERRs do not display in TM1 Websheets. Cells that display KEY_ERRs in Perspectives appear empty in Websheets.</p>
312676	<p>In some situations, when a TurboIntegrator process is saved with empty lines between the code, the empty lines are not being saved and all the code appears back together when the process is re-opened.</p>
314378	<p>A customer reported excessive memory usage with TM1 server related to running a specific series of chores, requiring the server to be restarted in order to free-up memory.</p>
314611	<p>A customer reported a TM1 server crash related to calculating a specific cube view after a certain set of steps. The crash happens after the view is calculated correctly, dimensions are moved around, and the Subset Editor is used to select elements. Just before the crash occurs, the view displays empty gray cells and does not populate with data after recalculating.</p>

Fixed Issues in TM1 9.0 SP2

The following table lists significant customer-reported issues that are resolved in TM1 9.0 SP2. This list may not be complete. If you have a question regarding the status of an inquiry, please contact [Applix customer support](#).

Inquiry # Summary

281166 The sorting order of TM1 objects and Excel files in Application folders has been enhanced. Objects in Application folders are now sorted alphabetically within object categories, and the object categories are sorted to match the same order as used in the rest of the Tree pane in Server Explorer.

For example, TM1 9.0 SP2 now uses the following sort order for Application folders:

1. Folders
 2. Cubes
 3. Views
 4. Dimensions
 5. Subsets
 6. Processes
 7. Chores
 8. External and Uploaded Files
-

286498 In TM1 versions 8.3.3 and 8.4.1, using View Extract to select and query elements in a view returned inaccurate results when run against a cube that contained reordered dimensions.

This problem is fixed in TM1 9.0 SP2.

289345 In some earlier versions of TM1 8.4.x, the installation process was not installing the full set of documentation files for the TM1 Java API.

This problem is fixed in TM1 9.0 SP2.

299110 Running TM1 Perspectives with Excel was causing Excel to crash when clicking a drop-down list and selecting another element in a worksheet that contained drop-down lists, multiple sheets, and DBRW functions.

This problem is fixed in TM1 9.0 SP2.

Inquiry # Summary

299201 The date format in a Websheet was not displaying consistently and could not be edited with the date format that was applied in Excel.

This problem is fixed in TM1 9.0 SP2.

Note that TM1 Web will display dates in the format that is set with the Languages setting in Internet Explorer.

300314, 312049 In some circumstances that are very difficult to reproduce, previous versions of TM1 9.0 had a display problem that resulted in several element names to overlap in the first position of the Subset Editor.

In some cases, this would also cause Excel to crash when a user performed the following sequence:

1. In Server Explorer, open a dimension in the Subset Editor.
2. Click the **All** button.
3. Select an N-element.
4. Click the **Rollup** button to show the parent element.

Excel would crash at this point.

This problem is fixed in TM1 9.0 SP2.

300655, 310700 When creating a Report from a slice in TM1 9.x and 8.4.x, zero suppression and filtered views were not being correctly applied to all pages in the resulting report. If the report contained multiple sheets, and a filter had been applied to the first sheet in the report, the values on the first sheet were filtered correctly but the values on subsequent sheets were not.

This issue is fixed in TM1 9.0 SP2.

303999 In some cases, exporting a multi-page Websheet to Excel from TM1 Web was creating a worksheet with the wrong sheet names.

This problem is fixed in TM1 9.0 SP2.

Inquiry # Summary

304124 In previous versions of TM1 Web, the Create Custom Consolidation button in the Advanced mode of the Subset Editor was enabled when the Subset Editor was opened from a title dimension in a Websheet. This button was not supposed to be enabled because Rollup Consolidations are not supported on title dimensions in Websheets.

This problem is fixed in TM1 9.0 SP2. The Create Custom Consolidation button is no longer enabled when opening the Advanced Subset Editor from a title dimension in a Websheet.

307022 In some cases, the following error was being displayed in TM1 Web when trying to open a view:

ViewNotConstructed

This happened when the view contained a title dimension that used a dynamic filter, and the first element returned with the filter had security set to None for the user's group.

This problem is fixed in TM1 9.0 SP2.

307592 The properties pane in the Subset Editor was not displaying the properties of a selected element when viewing elements by their alias name. For example, selecting a consolidation did not display the child elements in the properties pane if an alias was selected.

This problem is fixed in TM1 9.0 SP2.

307593 A customer reported a problem using TM1 in Excel with the In-Spreadsheet Browser and slices in the following scenario:

1. Open a view using the In-Spreadsheet Browser.
1. Convert the In-Spreadsheet Browser view to a slice.
2. Right click on the worksheet tab and select Move or Copy.
3. Select move to end, and also select Create a Copy. Click OK.
4. The new copy of the slice was incorrectly appearing as an In-Spreadsheet Browser and not as a slice as expected. Also, left clicking in the copied sheet displayed an error.

This problem is fixed in TM1 9.0 SP2.

Inquiry #	Summary
307598	<p>A customer reported that a new In-Spreadsheet Browser (ISB) could not be inserted after an ISB was deleted from the same worksheet. The following error would display:</p> <p>The selected cell is not empty. The ISB cannot be inserted here.</p> <p>This problem is fixed in TM1 9.0 SP2.</p>
308696	<p>In previous versions of TM1, the sorting order of views was different in TM1 Web compared to TM1 Server Explorer.</p> <p>This problem is fixed in TM1 9.0 SP2. Now, TM1 Web and TM1 Server Explorer both display views sorted by view names first, then by public and private status.</p>
309842	<p>The TM1 server was crashing due to a timing issue when simultaneously running multiple processes on large (multi-million member) dimensions and updating millions of cells.</p> <p>This issue is resolved in TM1 9.0 SP2.</p>
310200	<p>The TM1 x64 installation was not correctly registering the TM1 x64 ODBO driver (Tm1dasrv.dll), requiring the file to be registered manually after the installation was complete.</p> <p>This problem is fixed in TM1 9.0 SP2. The TM1 x64 ODBO driver is now registered automatically during installation.</p>
310557	<p>If you typed only one of the following single characters in a Websheet cell and then pressed enter, the character was being deleted from the cell:</p> <ul style="list-style-type: none"> • R, r • S, s • V, v <p>This issue is resolved in TM1 9.0 SP2.</p>
310611	<p>If a TM1 Websheet included a validation list, you would have to explicitly recalculate the Websheet after selecting an item from the validation list to see the effect of the selection. This was true even when the Websheet was in Automatic calculation mode.</p> <p>This issue is fixed in TM1 9.0 SP2.</p>

Inquiry #	Summary
310620	<p>A customer reported a TM1 server crash when using the TM1 ProcessBreak function inside an IF function on the ProLog tab of a TurboIntegrator process. A code example is shown below.</p> <pre data-bbox="347 384 1073 447">retval = IF(ExecuteProcess('P2') = ProcessExitNormal(), ExecuteProcess('P3'), Processbreak);</pre> <p>This issue is fixed in TM1 9.0 SP2.</p>
311131	<p>A customer reported that scheduled TurboIntegrator chores were not executing and the Chore Setup Wizard was incorrectly displaying the GMT date.</p> <p>This issue was caused by a problem calculating the conversion between GMT and local time.</p> <p>This issue is resolved in TM1 9.0 SP2.</p>
311143	<p>A customer reported that the following error message would display when running a certain Process in TM1 Web:</p> <p>Server Application Unavailable ...</p> <p>The following additional error message would display after logging out and then back into TM1 Web and then trying to load a websheet:</p> <p>Operation failed ...</p> <p>This problem was caused by running a Process that made the TM1 server send out a large number of progress messages while the Process was running.</p> <p>This problem is fixed in TM1 9.0 SP2.</p>
311171	<p>Using Freeze frames in a websheet was causing some of the websheet columns to lose alignment and shift to the right.</p> <p>This problem is fixed in TM1 9.0 SP2.</p>
311195	<p>When entering a date value into a numeric cell in a Websheet that was formatted to display dates, TM1 Web displayed the following error if the entered value had to be saved back to a TM1 Cube:</p> <p>Error #value: Wrong type of operand</p> <p>This problem is fixed in TM1 9.0 SP2.</p>

Inquiry #	Summary
311481	<p>In TM1 9.0 SP1 the Hidden Tab in the TM1 Web Cube Viewer was not functioning correctly and required the user to open the tab before a dimension could be dragged to the tab.</p> <p>This problem is fixed in TM1 9.0 SP2. You can now drag-and-drop a dimension to the Hidden tab when the tab is either opened or closed.</p>
311630	<p>A customer reported that Planning Manager was not opening the appropriate task in TM1 Web after logging in and choosing a Version and a Task.</p> <p>This problem is fixed in TM1 9.0 SP2.</p>
311664	<p>In some cases, cells formatted with a size 10 Arial font in Excel were displaying inconsistently when viewed in different Websheets.</p> <p>This problem is fixed in TM1 9.0 SP2.</p>
311701	<p>In earlier versions of TM1, you could only save public subsets on a remote TM1 server if a local TM1 Perspectives license was present.</p> <p>This issue is resolved in TM1 9.0 SP2. Users with admin privileges can now do the following operations on a remote TM1 server using TM1 Client, without having a TM1 Perspectives or Architect license.</p> <ul style="list-style-type: none"> • Create and save – public views and subsets • Save As – public views and subsets • Delete – public views and subsets • Create and save – public applications, folders, and external files • Publish – private folders, views, subsets, and external files • Set security assignments – views, subsets, and external files <p>Additionally, if you modify and then cancel a public view or subset, you are prompted to save changes.</p> <p>Users without admin privileges can not perform these tasks.</p>

Inquiry # Summary

311714 A customer encountered a problem running previous versions of TM1 in Japanese. After using the TM1 DBSS function in a worksheet to send 256 bytes or more of Kanji characters to the TM1 server, an error dialog box would display if the DBSS function was used again to send another string value. Clicking OK in the error dialog box would close Excel.

This problem is fixed in TM1 9.0 SP2.

312129 In TM1 8.4.x and 9.x, some DimensionElement functions, related to adding, inserting, and deleting dimensions, were not working when used in the TI Prolog tab with code that also included the ProcessBreak function.

This problem is resolved in TM1 9.0 SP2. Function calls made prior to calling the ProcessBreak function now work correctly.

312175 Some installation configurations of TM1 9.0 SP1 were causing a file version conflict with the msvcrt.dll file when TM1 was accessed across different versions of Windows. For example, installing TM1 9.0 SP1 on a Windows 2003 machine and having Windows XP clients access the tm1p.xla file from that server would display a Missing Library error.

This problem is fixed in TM1 9.0 SP2.

312315, 314051 A customer encountered the following display issues with dynamic slices when running TM1 in Japanese:

- If Kanji characters were used in an alias name for a dimension or subset, then the element aliases did not display correctly in a dynamic slice.
- If Kanji characters were used in the style name for a dimension or subset, then the formatting for the style was not applied correctly in a dynamic slice.
- The Number and Accounting formats for cells, and the Style and Color options for border lines were not being applied correctly in dynamic slices.

These problems are fixed in TM1 9.0 SP2.

312673 In some cases, the TurboIntegrator WildcardFileSearch function was not working properly in a Solaris UNIX environment.

This problem is fixed in TM1 9.0 SP2.

Inquiry #	Summary
312674	<p>A customer encountered a problem running TM1 in Japanese. Kanji characters were not displaying correctly in the Subset Editor. This problem would also occur in the TM1 Web navigation pane and Cube Viewer.</p> <p>This problem is fixed in TM1 9.0 SP2.</p>
312709	<p>The hlookup, index, and vlookup functions in Excel were not working correctly in a Websheet when a named range was used in the arguments of the function.</p> <p>This problem is fixed in TM1 9.0 SP2.</p>
312791, 312805	<p>A customer encountered a problem running TM1 in Japanese. Kanji characters were not displaying correctly in the Expression Window of the Subset Editor when running TM1 Perspectives with Excel 2002 or Excel 2003.</p> <p>This problem is fixed in TM1 9.0 SP2.</p>
313936	<p>In TM1 9.0 and TM1 9.0 SP1, the minimize, maximize, and close (x sign) controls on the Subset Editor, Cube Viewer, and Rules windows would become disabled. This would happen after a sequence of opening, minimizing, and restoring one of these windows.</p> <p>This problem is fixed in TM1 9.0 SP2.</p>
314024	<p>A customer reported a TM1 Server crash when performing certain data spread actions, such as Clear or Repeat, on a cube view that did not have either a row or column dimensions.</p> <p>This problem is fixed in TM1 9.0 SP2.</p>
314365, 299370	<p>In some instances, the row and column headings of a TM1 Web cube viewer were not correctly aligned with the data grid in the cube viewer. This generally occurred in the first TM1 Web cube viewer you opened after installation, but in some cases the row/column mismatch occurred each time the view was opened.</p> <p>This problem is fixed in TM1 9.0 SP2.</p>
314386	<p>Cells in a worksheet that use conditional formatting were not displaying correctly in a websheet when standard formatting was also applied to the cells.</p> <p>This problem is fixed in TM1 9.0 SP2.</p>

Inquiry #	Summary
314413, 311820, 314657	<p>In TM1 Web version 9.0 SP1, creating a password with certain characters would cause a login error to display when the user tried to log in. This error would prevent the user from successfully logging in to TM1 Web.</p> <p>This problem is fixed in TM1 9.0 SP2.</p>
314522	<p>A customer reported that some MDX statements in a dynamic subset that used to return values in previous versions of TM1 were not returning values in TM1 9.0 SP1.</p> <p>This problem is fixed in TM1 9.0 SP2.</p>
314634	<p>In some cases, chart legends were not being completely displayed in TM1 websheets if the legend was too long.</p> <p>This problem is fixed in TM1 9.0 SP2 so that chart legends now display on multiple rows if they are too long for a single row.</p>
315048	<p>A customer reported a crash with TM1 Perspectives in Excel and a related error when opening a cube view in Server Explorer if a user performed the following sequence:</p> <ol style="list-style-type: none"> 1. Slice a view to Excel from Server Explorer. 2. In Excel, enter 1.2E99 into an editable cell and then recalculate. Excel crash occurs. 3. In Server Explorer, try to open the view again and the following error is displayed: Buffer overrun detected. You can no longer open the view. <p>This problem is fixed in TM1 9.0 SP2.</p>
315086	<p>In TM1 versions 9.0.x and 8.4.4, the GetProcessErrorFileName and GetProcessErrorFileDirectory functions were causing a crash in some situations when used in a TurboIntegrator Process.</p> <p>This problem is fixed in TM1 9.0 SP2.</p>
316136	<p>Websheets were not successfully opening if they contained chart sheets. The following error would display:</p> <p>Error occurred while converting the MS Excel workbook ...</p> <p>This problem is fixed in TM1 9.0 SP2. You can open and view a Websheet that contains chart sheets, but only the worksheets will display.</p> <p>NOTE: TM1 Websheets display standard worksheets only and do not support the display of chart sheets.</p>

Fixed Issues in TM1 9.0 SP1

The following table lists significant customer-reported issues that are resolved in TM1 9.0 SP1. This list may not be complete. If you have a question regarding the status of an inquiry, please contact [Applix customer support](#).

Inquiry #	Summary
297081	A customer reports that the TM1 server service does not shut down correctly when closed via the Windows Task Scheduler.
297082	In some previous versions of TM1, processing worksheets incorrectly recalculated once after the last input record was processed. The effect was that the last input record was processed twice, resulting in data inconsistency.
298308	<p>A customer reports that data precision in Cube Viewer cells was lost in the following scenario:</p> <ol style="list-style-type: none">1. In any cube view, set the format to General.2. Enter a number with a number of decimal places (ie high precision)3. Set the format to Comma with less decimal places than the precision of the number4. Double-click on the cell. <p>The number is now shown at the reduced precision of the format and the precision of the number is lost</p>
297886	A defined name in Excel that started with an underscore, such as <code>_servername</code> , was not being correctly parsed when used as a nested reference in a TM1 worksheet function and then viewed as a Websheet in TM1 Web.
299723	If an initial worksheet cell derives its value from a direct reference to another worksheet cell (<code>= 'Worksheet'!C7</code>), double-clicking the initial cell does not jump to the referenced cell when the <code>Tm1p.xla</code> is loaded.
299951	TM1 Server running on Windows 2003 for Intel Itanium falls into single-threading mode in multi-user environment when opening views.
300037	<p>The TM1 64-bit Windows server crashes in the following scenario:</p> <ol style="list-style-type: none">1. Start the TM1 server

Inquiry #	Summary
	<ol style="list-style-type: none"> 2. Turn on TM1 Performance Monitor 3. Open a view and perform any data spread 4. Leave the server running and it will crash at the next hour when the performance monitoring cubes are updated.
300196	<p>TM1 server hangs when running in Citrix environment.</p> <p>This issue is resolved with the new ReceiveProgressResponseTimeoutSecs parameter to the Tm1s.cfg file. This parameter is described earlier in these release notes.</p>
300440	<p>When the port on which the TM1 server is running receives a packet from a non- TM1 source, the TM1 server crashes.</p>
300545, 306923	<p>When attempting to stop a TM1 server running as a service, the service goes into a permanent STOPPING state. The computer on which the server is running must be rebooted before the TM1 server can be restarted.</p>
302685	<p>Combo boxes in Websheets sometimes shifted position when selected if the TM1 Web components were installed on a computer where Office 2002 was also installed.</p>
304197	<p>A title subset that included an element with an accented character was causing a System.Xml.XmlException error when the following steps were completed in a Websheet:</p> <ol style="list-style-type: none"> 1. Click the Export button and choose Slice to Excel. 2. Select the title dimension containing the accented element in the Websheet Export dialog box. 3. Click OK.
305471	<p>If a TurboIntegrator processes uses a cube view data source, the sample values in the mapping tabs appear scrambled. This is due to the way the TurboIntegrator CreateView function builds views.</p>
305832	<p>An MDX expression in a subset throws an error when the expression returns an element to which the TM1 client does not have at least Read privilege.</p>
306250	<p>When a subset contains a large number of elements, opening the Subset Editor from a dynamic slice causes a runtime error.</p>
308332	<p>A customer reports that rule-calculated cells contain inaccurate</p>

Inquiry #	Summary
	<p>values.</p> <p>This problem is an issue of circular reference of stargate views. The problem occurs only when the TM1 server configuration parameter StargateOptimizationInRules is set to T. With this parameter enabled, calculation of a stargate view may recursively trigger calculations of other stargate views. The problem occurs when the construction of one view depends on the value from another view that is still being constructed.</p>
309630	The TM1Top utility causes a TM1 server crash.
284306	When TM1 Perspectives is loaded, find and replace across multiple selected Excel worksheets does not work; find and replace is restricted to the first selected sheet.
298239	An InstallShield error prevents TM1 from being installed on Windows 2003 when LDAP security is selected in the Installation Wizard.
299620	TM1 Web does not warn users when data is entered in an invalid format. For example, if a user is on a German machine(German locale) and enters a number in English format(1,000,000), TM1 Web should issue an error telling the user to use the proper format(1.000.000).
299806	<p>ASCIIOutput TurboIntegrator function crashes TM1 server when writing to a full disk.</p> <p>The ASCIIOutput function has been enhanced to better handle errors and to return a success/failure value upon execution. See Documentation Updates earlier in these release notes.</p>
299815	The NumericSessionVariable and StringSessionVariable TurboIntegrator variables are not documented in the TM1 online help.
300133	Graphs in TM1 Websheets do not scale as you zoom in/zoom out on the Websheet.
300229	Line numbering in TurboIntegrator procedure tabs is off by one. For example, if an error is reported in line the 8 of the Prolog tab, the error actually occurs on line 7.
304237	When you attempt to open a Websheet that contains a chart which references a single cell, TM1 Web issues a Specified cast is not valid error.
305307,	In some rare circumstances, text attribute values can appear

Inquiry #	Summary
305310	garbled when viewed in an }ElementAttributes control cube.
305317	Numeric formatting is not applied consistently across the TM1 clients when editing values. Numeric formats are retained when editing values in the TM1 Windows clients, but are sometimes lost when editing values in the TM1 Web client.
305320	The order in which application objects are listed differs between the TM1 Web client and the TM1 Windows clients.
305361	Websheets with a large number of empty rows (>500) and frozen panes do not open in TM1 Web.
305423	Excel crashes if you attempt to save a TM1 Report in a directory to which you do not have write access.
301521	<p>You can successfully add an external file to a TM1 application, either by reference or by uploading the file directly to the TM1 server, when the filename includes characters from the extended ASCII character set. However, only such files that have been uploaded to the TM1 server can be opened in TM1 Web as a Websheet.</p> <p>If a TM1 Web user attempts to open a filename containing characters from the extended ASCII character set, and that file has been inserted into an application by reference, the user receives an error stating that the file does not exist</p>
305555	TM1 Websheets incorrectly handle automatic series borders, rendering thin data point lines nearly invisible.
305967	Nested IF statements return #VALUE in TM1 Web, due to a corrupted argument stack.
306938	The Rules Tracer displays the current rule statement on a single scrollable line, making it difficult to view and debug the statement.
307015, 310349	<p>When opening a Websheet from a hyperlink, the Websheet opens correctly but the sheet tab displays the true name for the sheet rather than the assigned name.</p> <p>The true name for a sheet uses the format <i>assigned_name.xls_yyyymmddhhmmss.xls</i>, where <i>assigned_name</i> is the name used to save the sheet and <i>yyymmddhhmmss</i> is a date stamp indicating the date and time at which the sheet was saved.</p>
307025	In some unique scenarios, number formatting in Websheets

Inquiry #	Summary
	causes an index out of bounds error.
307624	Excel sheet/cell protection is not retained in Websheets.
307909	When an application folder is selected in the Server Explorer, any sub-folders that reside in the application folder do not appear in the Properties pane.
308009	In some unique scenarios, combo boxes that work correctly in Excel return errors in TM1 Websheets
308089	A broadcast message sent to TM1 clients through the Clients Messaging Center display only the first 456 characters of the message.
308093 , 310495, 287370	The TIMST TurboIntegrator function does not return a valid month string.
308100, 308534, 308580	A circular reference in a TM1 rules causes the TM1 server to crash.
308194	Column widths in Excel worksheets are not retained when viewed as a TM1 Worksheet.
308330	The drop-down menus on the Select Subset Elements by Attribute dialog box do not scale to accommodate long attribute values.
308531	Row 1 is not included in a TM1 report created from a classic slice.
308533	Excel crashes if you attempt to save a TM1 report to an invalid filename.
308700	A TM1 Websheets does not display a reference to named range that reside on a sheet whose name begins with a space.
309033	You cannot access the Advanced mode of the Subset Editor when applying the Relative Proportional or Relative Percent Adjustment spreading methods.
309308	Application files (Excel spreadsheets) to which a user has None privilege are visible in the Properties pane of the Server Explorer. If a user with None privilege attempts to open such a file from the Properties pane, an error is issued and Excel crashes.
309632, 309656	If Freeze Panes is applied to an Excel sheet, formatting is not

Inquiry #	Summary
	retained when viewing the sheet as a TM1 Websheet.
309745	If division by zero occurs anywhere in a Websheet, an attempt to export the Websheet as a slice, snapshot, or PDF results in an error.
310447.	In a Websheet, pressing Enter after editing a cell value does not always move the cursor to the cell immediately below. This problem is frequently encountered when a sheet includes merged cells.
310031	Localized documentation is not installed with French version of TM1, only English documentation is installed.
310045	<p>In the TM1 Web Subset Editor, the list of available attributes does not refresh correctly in the following scenario:</p> <ol style="list-style-type: none"> 1. Open the Subset Editor. 2. Click the Advanced button. 3. Click the Filter button and choose Filter by Attribute. 4. Select an attribute. 5. Select a different attribute without canceling the dialog box. <p>Note that all available attributes are listed twice.</p>
310075	In the TM1 Web Subset Editor, all available attribute values do not display when attempting to filter a subset by attribute.
310091	In a Websheet, you cannot enter the letters C or V in a cell if they are the sole characters in the cell.

Fixed Issues in TM1 9.0

The following table lists significant customer-reported issues that were resolved in TM1 9.0. This list may not be complete. If you have a question regarding the status of an inquiry, please contact [Applix customer support](#).

Inquiry #	Summary
275639	<p>Zoom functionality is now available in TM1 Websheets.</p> <p>There are three options: Zoom In, Zoom Out, Restore Original Zoom.</p>
276455	<p>Help for the VUSLICE macro function formerly indicated that “the slice is inserted starting at the current cursor position in the active worksheet.”</p> <p>The help has been corrected to indicate that the slice is inserted starting at the top left cell (A1 or R1C1) in the active worksheet.</p>
277050	<p>Help for the SUBNM function incorrectly documented “Attribute” as the final function argument.</p> <p>The help has been changed to use “Alias” as the final argument, with clear description of the argument and details of what happens when you use this optional argument.</p>
281161	<p>The <i>TM1 Security Guide</i> incorrectly described how to reset default security for a dimension.</p> <p>The correct procedure is described in the 9.0 <i>TM1 Security Guide</i>.</p>
281896	<p>In versions of TM1 prior to 9.0, the Help window was configured to always remain on top of other applications.</p> <p>In 9.0, you can move other application windows on top of the Help window.</p>
284219	<p>The W_DBSENABLE function was not publicly documented in previous version of TM1.</p> <p>This function is documented in the online help for TM1 9.0.</p>
284566	<p>Beginning in TM1 8.4.2, the ProcessBreak TurboIntegrator function was not working correctly.</p>

Inquiry #	Summary
	This problem is resolved in TM1 9.0, as well as in 8.4.3.
285514	<p>The online help for the DBRW worksheet function did not contain specific information on recalculating worksheets with VBA. The help for the function now note the following:</p> <p>“If you use VBA to calculate a worksheet containing DBRW functions, you must call the W_CALC TM1 macro function to calculate the worksheet. Do not use the VB Calculate method to calculate a worksheet containing DBRW functions; doing so causes each DBRW function to be executed individually, defeating the purpose of the function.”</p>
285753	<p>Previous versions of TM1 Web did not support the Freeze Panes Excel feature in Websheets.</p> <p>Freeze Panes is supported in TM1 9.0 Websheets.</p>
286118	<p>In previous versions of TM1, the online help for the DimensionDeleteAllElements TurboIntegrator function did not explicitly state that deleting an element deletes all cube data associated with the element.</p> <p>This oversight has been addressed in TM1 9.0.</p>
287033	<p>In some previous versions of TM1, any attempt to use a processing worksheet when the worksheet name contained a period character (.) would cause a File Not Found error. For example, the file name sheet 8.7.xls would cause such an error.</p> <p>This problem is resolved in TM1 9.0.</p>
287459	<p>The syntax described for assigning TurboIntegrator variables was incorrect in the 8.4.2 online help. This has been corrected in TM1 9.0.</p>
297410	<p>In previous versions of TM1, Help examples for TurboIntegrator functions used the ASCII 145 quote character, making it impossible to copy examples directly into TurboIntegrator scripts.</p> <p>This TM1 9.0.help uses the ASCII 39 quote character in all examples.</p>
297902	<p>In some previous versions of TM1, if user attempted to start Perspectives or Architect with an expired tm1p8.lic file, Excel or Architect (respectively) would crash.</p>

Inquiry #	Summary
298032	<p>This problem is address in TM1 9.0. An attempt to start Perspectives or Architect without a valid license file now returns an error.</p> <p>In early beta versions of TM1 9.0, an attempt to open a dimension with a name containing the # character caused an error in the TM1 Web Subset Editor.</p> <p>This problem is resolved in final 9.0 release.</p>
300114	<p>The help for the DBRW and DBSW functions did not explicitly state that these functions cannot be used in processing worksheets.</p> <p>The 9.0 help has been updated to reflect the fact that only DBR/DBS functions can be used in processing worksheets.</p>
300293, 297279	<p>In some previous versions of TM1, shutting down an in-process local server could cause the TM1 client to hang. This problem is resolved in TM1 9.0. Please note, however, that Applix does not formally support the in-process local server in the 9.0 release.</p>
300294, 297321	<p>In TM1 8.4.x, a drill-through from a dynamic slice produced KEY_ERRs if performed after a drill-through from a classic slice.</p> <p>This issue is resolved in TM1 9.0.</p>
300297, 297326	<p>In some previous versions of TM1, undoing zero suppression across multiple slices on a shared axis could cause KEY_ERRs in the slices.</p> <p>This problem is resolved in TM1 9.0.</p>
300295, 298052	<p>In TM1 8.4.2, when two dynamic slices were linked along the row as axis, and the right-most slice contained all zeros in the final column, that final column was not suppressed when zero suppression was applied to the slices.</p> <p>This problem is resolved in TM1 9.0.</p>
300336, 287566	<p>In some previous versions of TM1, if the TM1 server was configured to use integrated login, read-only users could incorrectly occupy read/write ports on the server. This could lead to Maximum Number of Connections Exceeded on the Server errors when legitimate</p>

Inquiry #	Summary
	<p>read/write users attempted to log in to the server.</p> <p>This problem is fixed in TM1 9.0.</p>
300338, 287614	<p>DBRA functions, rather than returned function values, appeared in TM1 Reports when using the Snapshot option in some previous versions of TM1.</p> <p>This problem is resolved in TM1 9.0; TM1 Reports now display the correct function values.</p>
300339, 286418	<p>In previous versions of TM1, a drill-through from an Excel worksheet to a relational datasource placed the drill-through results in a new sheet of the current workbook.</p> <p>In TM1 9.0, a drill-through from an Excel worksheet to a relational datasource inserts the drill-through results in an entirely new workbook.</p>
302370, 300225	<p>In TM1 8.4.2, NON EMPTY statements in an MDX query caused the TM1 server to hang.</p> <p>This problem is resolved in TM1 9.0.</p>
302402, 297082	<p>In TM1 8.3 and 8.4, processing worksheet recalculated one extra time after processing was complete.</p> <p>This problem is resolved in TM1 9.0.</p>
302553, 302391, 298569	<p>TM1 8.4.3 required significantly longer time to load large dimensions compared to TM1 8.4.2.</p> <p>This problem is resolved in TM1 9.0.</p>
302569, 299676	<p>In TM1 8.3, executing a TurboIntegrator process using a non-existent data file sometimes caused a TM1 server crash.</p> <p>This problem is resolved in TM1 9.0.</p>
302574, 299677, 284507	<p>In previous versions of TM1, blank lines/rows in a rules worksheet were ignored when the rule was compiled and saved as a .rux file. Consequently, line error reporting, which is based on the .rux file, would be inaccurate.</p> <p>This problem is resolved in TM1 9.0; blank lines/rows in a rules worksheet are retained in the associated .rux file.</p>
303220,	<p>In some rare circumstances, there was a data disparity</p>

Inquiry #	Summary
301236	between a TM1 Websheet viewed as the ADMIN user and the same Websheet viewed as any other user. This problem is resolved in TM1 9.0.