
Applix *TM1* Technical Bulletin

Configuring a 64-bit TM1 Server to Access ODBC Connections

Date: 03/13/06

This technical bulletin describes how to access different types of ODBC connections from a 64-bit TM1 server running on an x64 based system.

Overview

To access ODBC connections from a 64-bit TM1 server running on an x64 based system, you must configure your system environment for the specific type of ODBC connection that you want to use.

- **Local ODBC connection *with* native 64-bit ODBC drivers** – Connect using native 64-bit ODBC drivers, supplied separately from a database vendor.
- **Remote ODBC connection on a separate x86 32-bit system** – Connect through the TM1 32-bit ODBC Gateway installed on a *separate x86 32-bit* system.
- **Remote ODBC connection on a separate x64 64-bit system** – Connect through the TM1 32-bit ODBC Gateway installed in WOW64 space on a *separate x64 64-bit* system.

NOTE: The TM1 ODBC Gateway (also called axnet) is not distributed in the TM1 x64-bit installation and must be installed separately.

Accessing Local ODBC Connections using Native 64-bit ODBC Drivers

If you have a local ODBC connection *and* also have the vendor-supplied 64-bit ODBC drivers installed for it, then you can use this configuration as is. The x64 TM1 server will use the native 64-bit ODBC drivers and will not require the TM1 32-bit ODBC Gateway.

Accessing Remote ODBC Connections on a Separate x86 32-bit System

Follow these steps to configure the x64 TM1 server to access remote ODBC connections through a TM1 ODBC Gateway that is installed on a separate x86 32bit system.

1. Install the TM1 ODBC Gateway, as described later in this technical bulletin.
2. Edit the Tm1s.cfg file on the x64 TM1 server to contain the following parameter settings:

ELFODBCPassword=*passwdString*

ELFODBCUserName=*domainname\username*

ELFODBCServer=*Remote32-bitMachineName*

UseELFODBC= T

Where *domainname\username* must be set to the same domain name and user that are used for all the TM1 services.

3. Save and close the Tm1s.cfg file.
4. Restart the TM1 Server.

Accessing Remote ODBC Connections on a Separate x64 64-bit System

Follow these steps to configure the x64 TM1 server to access remote ODBC connections through a TM1 ODBC Gateway that is installed in WOW64 space on a separate x64 64bit system.

1. Install the TM1 ODBC Gateway, as described later in this technical bulletin.
2. Edit the `Tm1s.cfg` file on the x64 TM1 server to contain the following parameter settings:

```
ELFODBCPassword=passwdString
```

```
ELFODBCUserName=domainname\username
```

```
ELFODBCServer=Remote64-bitMachineName
```

```
UseELFODBC= T
```

Where *domainname\username* must be set to the same domain name and user that are used for all the TM1 services.

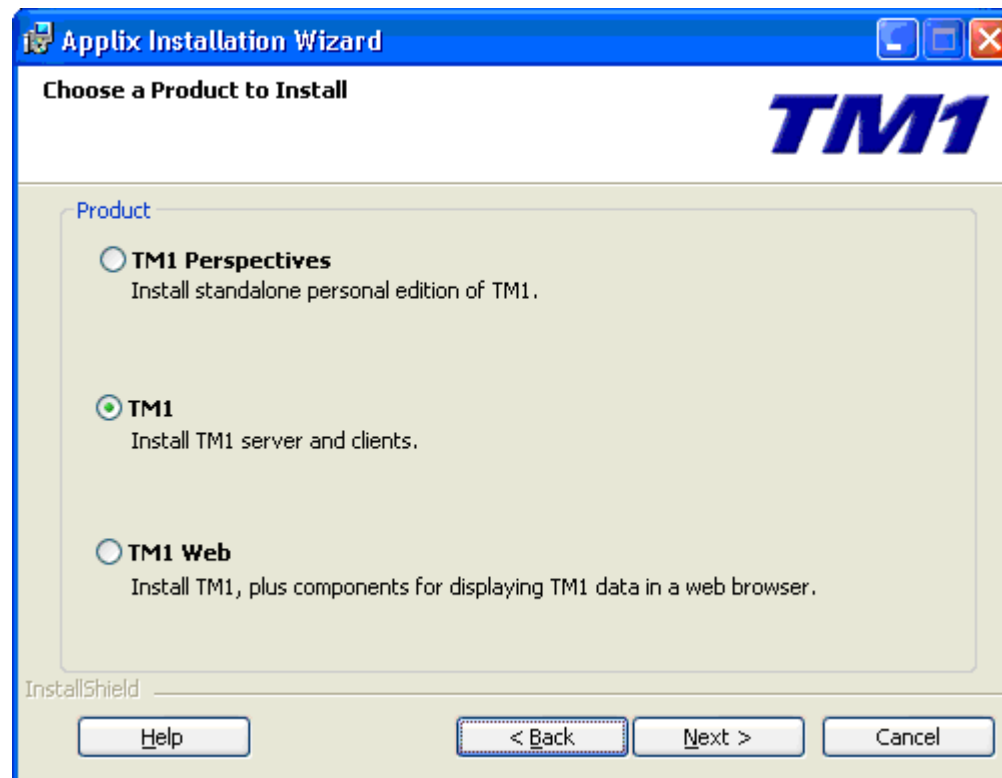
3. Save and close the `Tm1s.cfg` file.
4. Restart the TM1 Server.

Installing the TM1 ODBC Gateway

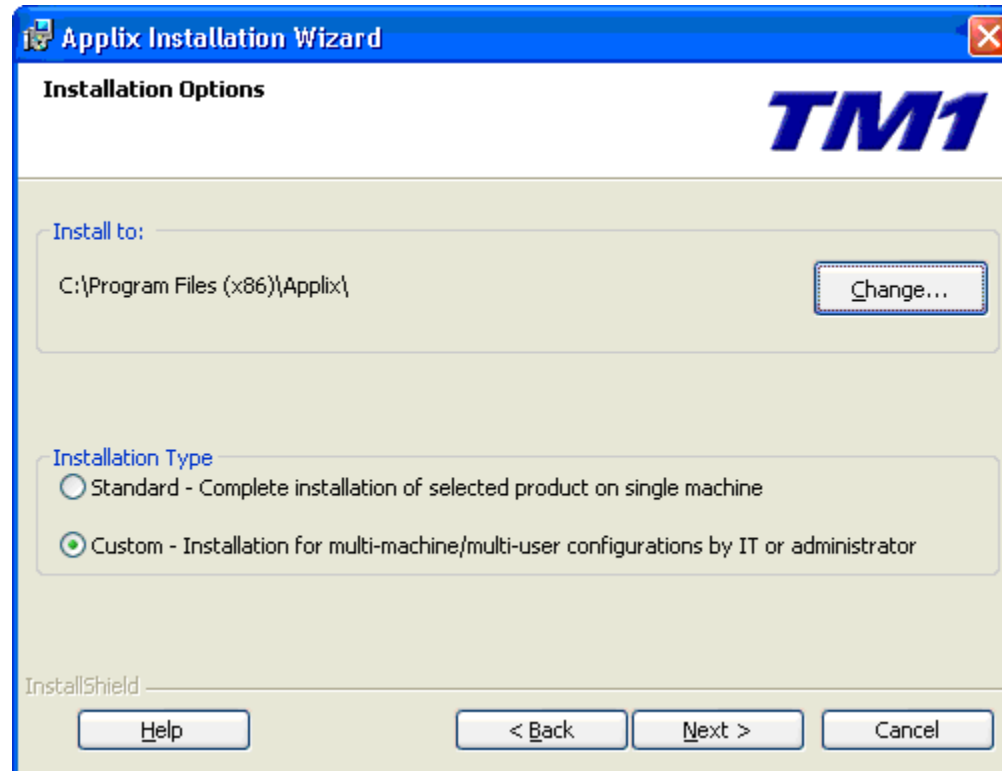
The TM1 ODBC Gateway (also called axnet) is not distributed in the TM1 x64-bit installation and must be installed separately from the x86 installation version of TM1.

Perform the following steps to install the TM1 32-bit ODBC Gateway:

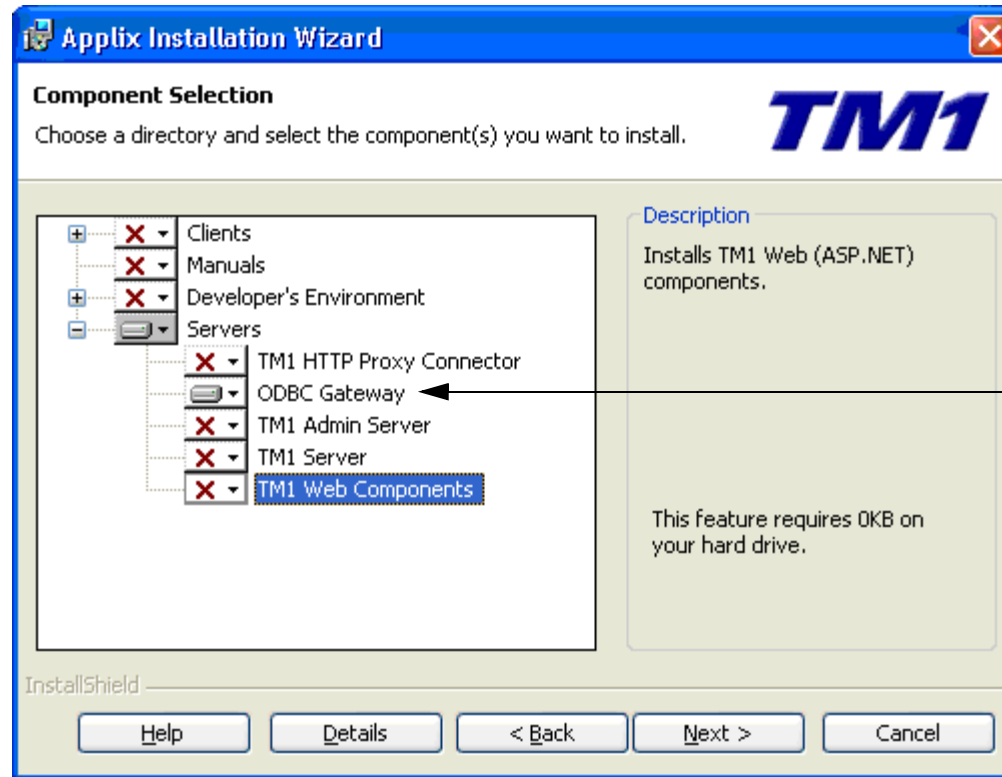
1. Run the x86 version of the TM1 Installation Wizard.
2. Choose **TM1** as the product to install and click **Next**.



3. Select **Custom** in the Installation Type box on the Installation Options screen and click **Next**.



4. On the Component Selection screen, cancel the selection for all components except for the ODBC Gateway server component.



Install only the ODBC Gateway server component

5. Click **Next** and complete the installation.
6. Restart the computer.

The TM1 ODBC Gateway runs as a server process and starts during the operating system start-up routine. For more details, see the *TM1 Administrator's Guide*.